

INTERNATIONAL STUDENT PROSPECTUS



Be Ambitious!

2013-2014



HOKKAIDO UNIVERSITY

Do you want to study in the most beautiful campus in Japan, in one of the most desirable cities in Japan, and have the best international student experience? – then Hokkaido University is for you.

MOST BEAUTIFUL CAMPUS

In a special edition of the Asahi Newspaper, Sapporo Campus was voted as the most beautiful in Japan. Of the 9350 who responded to the questionnaire more than 40% voted for Hokkaido University. (2009)

MOST DESIRABLE CITY

In the last three surveys conducted from 2007, 2010, and 2012, Sapporo has consistently ranked in the top 3 cities in Japan to live.

*SBI Life Living

HIGHEST STUDENT SATISFACTION

In a 2012 graduate survey conducted by the Nikkei Newspaper, Hokkaido University graduates gave us the overall highest satisfaction ratings of all Japanese universities.

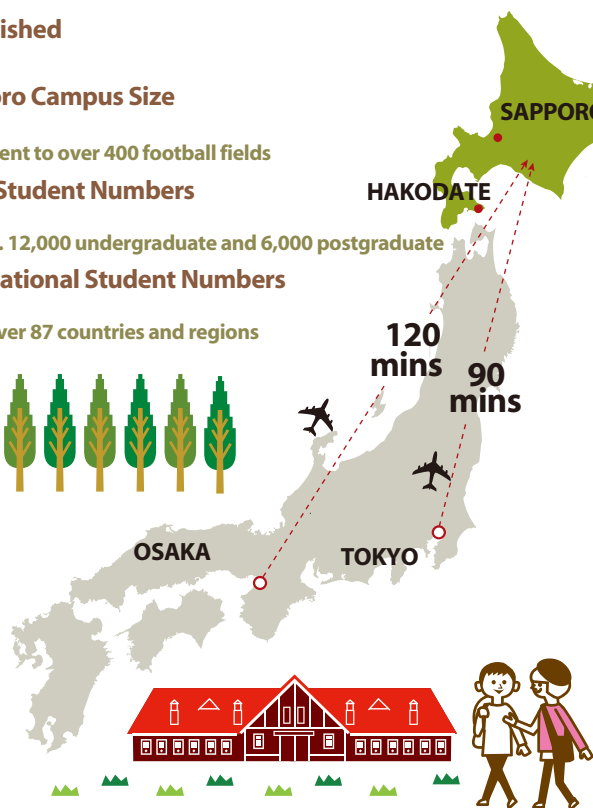
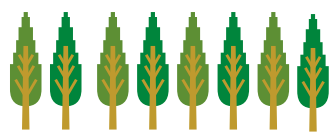
CONTENTS

University Overview, Calendar.....	p 2
General Information on Entry	p 3
Japanese Language Requirements, Admission, Tuition Fees.....	p 4
Undergraduate Entry	p 5
Undergraduate Study Areas.....	p 6
Postgraduate Entry.....	p 8
Postgraduate Study Areas.....	p 9
Programs offered in English, Scholarship Information.....	p 11
International Student Support.....	p 12
Accommodation.....	p 13
Hokkaido Living, Events in Sapporo.....	p 15
Hokkaido Climate	p 16
Student Life.....	p 17
Contact Us.....	p 18



UNIVERSITY OVERVIEW

- **Established**
1876
- **Sapporo Campus Size**
180ha
Equivalent to over 400 football fields
- **Total Student Numbers**
18,161
Approx. 12,000 undergraduate and 6,000 postgraduate
- **International Student Numbers**
1,493
From over 87 countries and regions

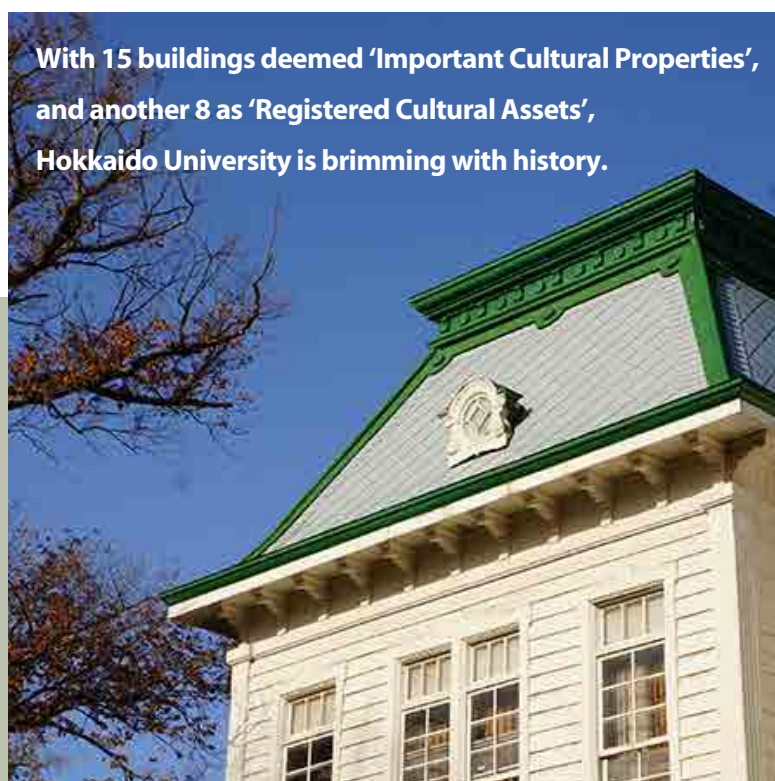


Quality Education in a Beautiful Setting

Hokkaido University is one of the oldest, largest, and most prestigious universities in Japan. Boasting the largest number of faculties of Japan's national universities, we cover almost all areas of the humanities and social and natural sciences and are leader in research activities in Japan and the world. Our alumni include a Nobel laureate, business leaders, research pioneers, artists and writers. Our graduates benefit from the University's determination to develop curious minds that are ready to embrace challenges and acquire knowledge, reveal new global perspectives and find solutions which change society for the better.

The University placed in the top 23 in the Asian region, and ranked 8th in Japan by the Academic Ranking of World Universities 2012. We offer a broad-based educational experience, world-class research facilities, and all the attractions of living in the cosmopolitan city of Sapporo. The atmosphere is warm and welcoming, our campuses clean and safe, and we are located in a breath-takingly beautiful setting.

With 15 buildings deemed 'Important Cultural Properties', and another 8 as 'Registered Cultural Assets', Hokkaido University is brimming with history.



CALENDAR

Academic Year.....	April 1 - March 31
Summer vacation.....	Early August - Late September
1st Semester.....	April 1 - September 30
University Foundation Day.....	August 14
2nd Semester.....	October 1 - March 31
Winter vacation.....	Late December - Early January

*Holiday periods differ slightly depending on the faculty or graduate school





Paying your own way?

Entry	Goal	General Entry Requirements	Entry Exams
Undergraduate Students	To obtain a Bachelor's Degree.	1. You must have completed 12 years of education in a foreign country OR be at least 18 years of age and hold the International Baccalauréat.* 2. You must take the EJU. For grades, see page 5.	See page 5.
Graduate Students	To obtain a Master's or Doctoral Degree.	You must have completed 16 years of education and hold a Bachelor's Degree or equivalent.**	See page 8.
Research Students	To research without obtaining a degree.	You must hold a Bachelor's Degree or equivalent.	See page 8.
Auditors	To attend lectures as a non-award student (credited on non-credited.)	You must possess a high level of knowledge in the specified area you wish to study.	Submit required documents to the school you would like to enter.

*Other high-school qualifications may be accepted if deemed equivalent. Please enquire at the Hokkaido University Admissions Center. **18 years in the case of Medicine, Dental Medicine, and Veterinary Medicine.

Japanese Government (Monbukagakusho) Sponsored?

Entry	Goal	Entry Requirements	Submission	Amount and Duration
Undergraduate Students	To obtain a Bachelor's Degree.	You must have completed 12 years of education or equivalent in a foreign country AND be between 17 and 22 years of age.	Submit all documents directly to the Japanese Embassy in your country and sit the subsequent exam held yearly between March and May.	¥117,000 monthly for the standard duration of your course plus one year of Japanese Language Training.
Graduate Students	To obtain a Master's or Doctoral Degree.	You must have completed 16 years* of education or equivalent AND be less than 35 years of age.	Applying through the Japanese Embassy in your country? Submit all documents between March and May.	¥144,000 monthly for the standard duration of a Master's or Professional degree; ¥145,000 per month for the standard duration of a Doctoral degree.
Research Students	To conduct research (non-award.)		Applying through Hokkaido University? Submit all documents to the graduate school through the supervisor willing to accept you around December.	¥143,000 monthly for no more than two years including 6 months Japanese Language Training.
Japanese Language and Culture Studies Program Students	To raise proficiency in Japanese and Japanese Culture.	1. You must be a Japanese major enrolled in an undergraduate program at a foreign university at the time of entering and departing Japan. 2. Be between 18 and 30 years of age. 3. Have N3 or equivalent in the JLPT.		¥117,000 monthly for one year.

*18 years in the case of Medicine, Dental Medicine and Veterinary Medicine



As part of the Monbukagakusho scholarship, an additional monthly stipend of 3,000 yen per month will be provided during the colder months from November to March.

JAPANESE LANGUAGE REQUIREMENTS

Under-graduate	ADVANCED JAPANESE NEEDED (around N1 level of the JLPT) All lectures, tutorials, and seminars are conducted in Japanese at this level. Testing is conducted within the framework of the EJU examination. (Please see page 5 for more information.)
Post-graduate	The Japanese language ability requirement differs at each graduate school depending on your major and/or your supervisor's approach. Please enquire at each graduate school for appropriate language requirements. For a list of our degree programs taught entirely in English which have no Japanese language entry requirement, please see page 11.

JAPANESE LANGUAGE SUPPORT

Pre-admission	In order to improve your Japanese level, you may want to consider studying within Japan in a university preparatory course. Information on possible schools and course offerings are available at JASSO (Japan Student Services Organization) www.jasso.go.jp
Post-admission	The International Student Center offers challenging, supplementary Japanese language classes to international students. No Japanese language major available. Courses are designed to support you in your everyday life in Hokkaido.

ADMISSION BY SEMESTER

GRADUATE SCHOOL	MASTER		DOCTORAL	
	April	October	April	October
Letters	✓	✗	✓	✗
Law	✓	✓	✓	✓
Economics and Business Administration	✓	*✓	✓	✗
Medicine	✓	✓	✓	✓
Dental Medicine	—	—	✓	✗
Veterinary Medicine	—	—	✓	✓
Information Science and Technology	✓	*✓	✓	✓
Fisheries Sciences	✓	✗	✓	**✓
Environmental Science	✓	✓	✓	✓
Science	✓	✓	✓	✓
Agriculture	✓	*✓	✓	*✓
Life Science	✓	✓	✓	✓
Education	✓	✗	✓	✗
International Media, Communication, and Tourism Studies	✓	✗	✓	***✓
Health Sciences	✓	✗	✓	✗
Engineering	✓	✓	✓	✓
Chemical Sciences and Engineering	✓	✓	✓	✓
Public Policy	****✓	✗	—	—

*Allowed, but only under special circumstances **Catering to professionals only ***For Media majors only ****This is a two year professional degree, not a master's degree



TUITION FEES

At the time of publishing, 1USD = 91yen

	Undergraduate Students	Postgraduate Students	Research Students	Auditing Students
Tuition Fee	¥535,800/\$5,880 (per year)	¥535,800/\$5,880 (per year)	¥29,700/\$326 (per month)	¥14,800/\$162 (1 credit)
Entrance Fee	¥282,000/\$3,100	¥282,000/\$3,100	¥84,600/\$930	¥28,200/\$310
Examination Fee	¥17,000/\$187	¥30,000/\$330	¥9,800/\$108	¥9,800/\$108

- At Hokkaido University, tuition is paid in two installments : May and November.
- Should tuition fees be revised during a student's period of enrollment, the new amount will become effective from that point on.
- Students who fail to pay tuition fees for two terms will not be allowed to continue.
- Students enrolled in regular (degree-seeking) undergraduate and graduate courses who experience financial difficulty while maintaining excellent academic records may apply to receive a 100%, 50% or 25% tuition fee reduction.
- Tuition Fees must be paid in yen.



How easy is it to obtain a tuition fee waiver if I'm having financial difficulties?



In 2012, 98.3% of first semester applicants and 97.9% of second semester were successful in obtaining a tuition fee waiver of either 100%, 50% or 25%.



UNDERGRADUATE ENTRY

CHECK POINT!



✓ Have you taken the EJU?

The Examination for Japanese University Admission for International Students (EJU) is used to evaluate the Japanese language proficiency and the basic academic abilities of international students wishing to study at the undergraduate level at universities or other such higher educational institutions in Japan. See below for fields and scores. For detailed information, please visit the JASSO website
www.jasso.go.jp/eju/eju_guide24_e.html

✓ Have you obtained 12 years or more of education?

✓ Do you have advanced Japanese?

You need a very good command of the Japanese language, equivalent to level N1 of the Japanese Language Proficiency Test to enter as an undergraduate student. (knowledge of around 2000 Kanji, + a 10,000 word vocabulary)

STEPS

1

Read and understand the online application procedures issued by Hokkaido University and submit your application via the web page at www.hokudai.ac.jp/
 Paper-based application forms are no longer available.

2

Entry Assessment takes place in February and there are two stages involved.
 1st Stage : Application document screening
 2nd Stage : Interview / Short Essay. At this stage, your English Proficiency is also assessed and a TOEFL certificate must be submitted.

3

Wait for your results!

4

Results announced in early March.
 Get ready to begin your Hokudai Experience!

For detailed entry into Hokkaido University as an undergraduate student please contact the Admissions Center. ☎+81-(0)11-706-7484 www.hokudai.ac.jp/

FACULTY / SCHOOL	EJU REQUIREMENTS (see checked box 1 above)	SELECTION METHODOLOGY
Faculty of Letters (4 year degree)	EJU 'Japanese as a Foreign Language' 270 or higher (including writing aptitude) Total of 'Japan and the World' + 'Mathematics' 265 or higher.	Application Document Screening, Report, Interview, Submission of TOEFL*
School of Education (4 year degree)		
School of Law (4 year degree)		
School of Economics and Business Administration (4 year degree)	EJU 'Japanese as a Foreign Language' 270 or higher (including writing aptitude) Total of 'Science' + 'Mathematics' 265 or higher.	Application Document Screening, Interview, Submission of TOEFL* Report for Mathematics Stream only
School of Science (4 year degree)		
School of Medicine	Medicine (6 year degree)	Application Document Screening, Interview, Submission of TOEFL* Report for Mathematics Stream only 550 or higher on the TOEFL PBT, 79 or higher on the TOEFL iBT, or 750 in TOEIC.
	Health Sciences (4 year degree)	
School of Dental Medicine (6 year degree)	EJU 'Japanese as a Foreign Language' 360 or higher (including writing aptitude) Total of 'Science' + 'Mathematics' 280 or higher.	Application Document Screening, Interview, Report, Submission of TOEFL*
School of Pharmaceutical Science and Pharmacy	Pharmaceutical Sciences (4 year degree)	Application Document Screening, Interview, Submission of TOEFL*
	Pharmacy (6 year degree)	
School of Engineering (4 year degree)	EJU 'Japanese as a Foreign Language' 270 or higher (including writing aptitude) Total of 'Science' + 'Mathematics' 265 or higher.	Application Document Screening, Interview, Submission of TOEFL*
School of Agriculture (4 year degree)		
School of Veterinary Medicine (6 year degree)	EJU 'Japanese as a Foreign Language' 360 or higher (including writing aptitude) Total of 'Science' + 'Mathematics' 320 or higher.	Application Document Screening, Interview, Report, Submission of TOEFL*
School of Fisheries Sciences (4 year degree)	EJU 'Japanese as a Foreign Language' 270 or higher (including writing aptitude) Total of 'Science' + 'Mathematics' 265 or higher.	Application Document Screening, Interview, Report, Submission of TOEFL*

* TOEFL PBT, TOEFL, TOEIC, CAMBRIDGE, IELTS and others examinations deemed equivalent may also be accepted.



UNDERGRADUATE STUDY AREAS



LETTERS	EDUCATION	LAW	ECONOMICS AND BUSINESS ADMINISTRATION
Humanities and Human Sciences	Education	Law	Economics
Philosophy and Cultural Sciences	Social Sciences of Education	Public Law	Economic Theory
History and Anthropology	Pedagogical Foundations of Education	Private Law	Economic History
Linguistics and Literature	Psychology of Education	Criminal Law	Applied Economics
Human Sciences	Science of Health & Physical Education	Social Law	Business Administration
		Interdisciplinary Legal Studies	Business Administration
		Political Studies	Management Information

SCIENCE	MEDICINE		
Mathematics	Medicine		
Mathematics Stream	Introduction to Medicine	History of Medicine	Human Genetics
Physics	Anatomy and Embryology	Physiology	Biochemistry
Physics Stream	Pharmacology	Pathology	Microbiology
Chemistry	Forensic Medicine and Medical Informatics	Public Health and Hygiene	Internal Medicine
Chemistry Stream	Surgery	Reproductive Surgery	Developmental Medicine
Biological Sciences	Psychiatry and Neurology	Sensory Organ Medicine	Reconstructive Surgery and Rehabilitation
Biology	Radiology and Nuclear Medicine	Rehabilitation and Physical Medicine	Anesthesiology and Critical Care Medicine
Macromolecular Functions	Health Sciences		
Earth and Planetary Sciences	Nursing	Radiological Technology	Medical Technology
Earth and Planetary Sciences Stream	Physical Therapy	Occupational Therapy	

DENTAL MEDICINE			PHARMACEUTICAL SCIENCES AND PHARMACY
Dentistry			Pharmacy
Oral Histology and Embryology	Oral Biochemistry	Oral Pathology	Pharmacy Stream
Oral Bacteriology	Dental Pharmacology	Dental Materials and Engineering	Pharmaceutical Sciences
Operative Dentistry	Periodontology and Endodontology	Oral Diagnosis and Oral Medicine	Pharmaceutical Sciences Stream
Oral and Maxillofacial Surgery	Dental Radiology	Dental Anesthesiology	
Pediatric Dentistry	Orthodontics and Aging	Dentistry	
Preventive Dentistry			

ENGINEERING	AGRICULTURE	
Applied Science and Engineering	Agrobiology and Bioresources	Applied Bioscience
Applied Physics and Engineering	Agrobiology and Bioresources Stream	Applied Bioscience Stream
Applied Chemistry	Bioscience and Chemistry	Forest Science
Materials Engineering	Bioscience and Chemistry Stream	Forest Science Stream
Electronics and Information Engineering	Bioresource and Environmental Engineering	
Information Engineering	Bioresource and Environmental Engineering Stream	
Computer Science	Animal Science	Agricultural Economics
Electronics for Informatics	Animal Science Stream	Agricultural Economics Stream
Bioengineering and Bioinformatics		
Media and Network Technologies		
Systems Science and Informatics		
Mechanical and Intelligent System Engineering		
Mechanics and Information		
Mechanical Systems		
Socio-Environmental Engineering		
Civil Engineering		
Public Policy and Engineering		
Architecture		
Environmental Engineering		
Sustainable Resources Engineering		

VETERINARY MEDICINE	FISHERIES SCIENCES	
Cooperative Veterinary Education Program	Marine Biology	Applied Marine Science
Basic Veterinary Medicine	Marine Biology Stream	Applied Marine Science Stream
Pathobiological Veterinary Medicine	Aquaculture Life Science	Marine Bioresources Chemistry
Clinical Veterinary Medicine	Aquaculture Life Science Stream	Marine Bioresources Chemistry Stream





POSTGRADUATE SCHOOLS

Hokkaido University has 18 Graduate Schools from which to choose from...

Letters

Law

Economics and Business Administration

Medicine

Dental Medicine

Veterinary Medicine

Information Science and Technology

Fisheries Sciences

Environmental Science

Science

Agriculture

Life Science

Education

International Media, Communication, and Tourism Studies

Health Sciences

Engineering

Chemical Sciences and Engineering

Public Policy



POSTGRADUATE ENTRY

For Master's, Doctoral, and Research Students

Semester Commencement	April or October commencement possible. For a detailed list, please see page 4.
Entry Requirements	In order to gain entry into a Master's, Doctoral, or Professional Degree Program, applicants must: - hold a bachelor's degree or equivalent and have completed at least 16 years of education (18 years for the case of Medicine, Dentistry, and Veterinary Medicine.)
Information on Research Students	Many International Students enroll from six months to one year as "research students." Some graduate schools recommend doing this as a precursor to their graduate programs to allow students to settle into their research environments with ease. As with post-graduate students, research students receive guidance from a supervisor in their field of speciality but they cannot receive credits and do not obtain any formal qualification.

For information on tuition fees, examination fees, and entrance fees, please see page 4.
For information on scholarships, please see page 11.

STEP-BY-STEP GUIDE TO ENTRY

You need to have completed **Step 1** at least six months prior to your intended enrollment!

STEP 1

Find a Supervisor

Graduate and research students conduct research under the guidance of a supervisor. To enter Hokkaido University as a research or graduate student, you need to find a faculty member who is willing to give you instruction on your research. Find a prospective supervisor from our website:

- ① Hokkaido University Website > Research > Researchers' Database
<http://hecate.general.hokudai.ac.jp/welcome/top-page-eng.html>
- ② HUSCAP
<http://eprints.lib.hokudai.ac.jp/dspace/index.jsp>
- ③ All web and email addresses for our graduate schools are listed on page 18.

STEP 2

Apply to the graduate school

Check how to apply on the website of the graduate school you wish to enter. Applicants must pay the examination fee at the time of application.

STEP 3

Take the entrance examination

Screening procedures for research students are conducted on the basis of documentation submitted whilst screening procedures for graduate level students differ between each school. Please check the website of the school you wish to enter. In the event that you are required to come to Japan for the entrance examination, you will need to obtain a temporary stay visa at your local Japanese Embassy.

STEP 4

Commence enrolment procedures

After passing the screening process, you will be required to submit necessary documentation, pay the entrance fee, and complete other necessary procedures to become enrolled. Once you are issued with a Letter of Acceptance from Hokkaido University, you can apply for a student visa at your local Japanese Embassy.



POSTGRADUATE STUDY AREAS

LETTERS

Philosophy and Cultural Sciences	Philosophy, Ethics and Applied Ethics, Religious Studies and Indian Philosophy, Theory and History of Arts
History and Area Studies	Japanese History, Asian History, Occidental History, History and Anthropology, Northern Culture Studies, Slavic Studies
Linguistics and Literature	Linguistics and Western Languages, Western Literature, Linguistic Sciences, Japanology, Sinology, Filmology and Cultural Studies of Representation
Human Sciences	Psychology, Behavioral Science, Sociology, Regional Sciences

LAW

Law and Political Studies	Modern Law, Interdisciplinary Legal Studies, Political Studies, Advanced Institute for Law and Politics
Legal Practice	Private Law, Public Law

ECONOMICS AND BUSINESS ADMINISTRATION

Modern Economics and Mgt.	Economic Analysis, Social and Historical Economics, Economic Policy, Management Analysis
Accounting	Accounting

MEDICINE

Medicine	Biochemistry, Anatomy, Physiology, Pharmacology, Pathology, Microbiology, Preventive Medicine, Forensic Medicine and Medical Informatics, Internal Medicine, Radiology and Nuclear Medicine, Surgery, Anesthesiology and Critical Care Medicine, Reconstructive Surgery and Rehabilitation Medicine, Reproductive and Developmental Medicine, Sensory Organ Medicine, Neurological Disorder, Advanced Medical Sciences, Immunology, Pathological Oncology, Molecular Imaging, Chronomedicine, Joint Replacement and Tissue Engineering, Ocular Inflammation and Immunology, Women's Health Educational System, Translational Pathology, Advanced Medicine for Spine and Spinal Cord Disorders, Ocular Circulation and Metabolism, Organ Transplantation, Cancer Preventive Medicine
Medical Science	Medical Science

DENTAL MEDICINE

Oral Medical Science	Oral Medical Science, Oral Functional Science, Oral Health Science, Oral Pathobiological Science, Stomatognathics, Geriatric Oral Science
-----------------------------	---

VETERINARY MEDICINE

Veterinary Medicine	Biomedical Sciences, Disease Control, Veterinary Clinical Sciences, Environmental Veterinary Sciences, Applied Veterinary Sciences, Zoonosis Control
----------------------------	--

INFORMATION SCIENCE AND TECHNOLOGY

Synergetic Information Science	Complex Systems Engineering, Large-Scale Information Systems
Computer Science	Knowledge Software Science, Mathematical Information Science
Electronics for Informatics	Integrated Systems Engineering, Advanced Electronics, Quantum Electronics and Informatics
Bioengineering and Bioinformatics	Bioinformatics, Biomedical Systems Engineering, Biological Functions Engineering, Advanced Medical Engineering
Media and Network Technologies	Information Media Science and Technology, Information Communication Systems, Ubiquitous Network, Media Network Sociology
Systems Science and Informatics	Informatics for System Creation, Informatics for System Synthesis, Informatics for System Evolution, Practical Systems Education, Informatics for System Sensing

FISHERIES SCIENCES

Marine Bioresource and Marine Life Science	Marine Biology and Biodiversity, Marine Bioresource Science, Marine Environmental Science, Marine Bioresource and Environment Sensing, Marine Industrial Science and Technology, Marine Bioresources Conservation and Management, Aquaculture Biology, Aquaculture Genetics and Genomics, Marine Biotechnology and Microbiology, Marine Bioresources Chemistry, Marine Products and Food Science, Marine Biosafety Science and Technology
---	---

ENVIRONMENTAL SCIENCE

Environmental Science Development	Human and Ecological Systems, Environmental Adaptation Science, Practical Science for Environment, Global Environmental Management
Earth System Science	Geochemistry, Atmosphere-Ocean and Climate Dynamics, Cryosphere Science
Biosphere Science	Ecosystem Biology, Ecological Genetics, Molecular Biology, Plant Ecology, Animal Ecology, Marine Biogeochemistry and Physics, Aquatic Biology, Forest Conservation, Agro-Ecosystem Science
Environmental Materials Science	Biomaterials Chemistry, Environmental Nano-Materials, Molecular Photonics and Electronic Science, Environmental Catalytic Chemistry



SCIENCE	
Mathematics	Mathematics
Quantum and Condensed-Matter Physics	Quantum Solid State Physics, Condensed-Matter Physics
Cosmosciences	Fundamental Physics, Cosmos and Planets
Natural History Sciences	Earth and Planetary Dynamics, Earth and Planetary System Science, Biodiversity, Science Communication, Seismology and Volcanology

AGRICULTURE	
Bio-systems Sustainability	Agricultural and Resource Economics, Safety and Function of Food, Biomass Conversion, Sustainable Agrosience
Agrobiology	Applied Molecular Biology, Plant Breeding Science, Botany and Agronomy, Animal Production
Applied Bioscience	Food Science, Biomolecular Chemistry
Environmental Resources	Ecology and Systematics, Regional Environment, Science of Forest Resources, Integrated Forest-Landscape Management, Bioproduction Engineering

LIFE SCIENCE	
Life Science	Transdisciplinary Life Science, Biosystems Science, Biomedical and Pharmaceutical Science
Clinical Pharmacy	Clinical Pharmacy

EDUCATION	
Education	Pedagogical Foundations of Education, Life-long Education, Educational Social Sciences, Educational Psychology, Clinical Psychology, Health Education, Physical Education, Multicultural Education

INTERNATIONAL MEDIA, COMMUNICATION, AND TOURISM STUDIES	
International Media and Communication	Public Communication, Journalism, International Public Relations, Media and Culture, Multimedia Studies, Language and Communication, Language Acquisition, Japanese Linguistics, International PR Strategies
Tourism Creation	Tourism Creation, International Regional Culture Studies, Tourism Regional Management

HEALTH SCIENCES	
Health Sciences	Health Sciences, Nursing

ENGINEERING	
Applied Physics	Quantum Matter Physics, Complex Material Physics, Optical Science and Technology, Solid State Physics and Engineering
Materials Science and Engineering	Ecological Materials, Materials Design, Energy Materials, Energy Conversion Materials, Ironmaking and Steelmaking, Frontier Energy Engineering
Mechanical and Space Engineering	Space Systems Engineering, Materials and Fluid Mechanics, Space Exploration Engineering
Human Mechanical Systems and Design	Biomechanics and Robotics, Micromechanical Systems, Biomedical Simulation
Energy and Environmental Systems	Nuclear and Environmental Systems, Applied Energy Systems
Quantum Science and Engineering	Applied Quantum Beam Engineering, Plasma Science and Engineering, Nanomaterials Science, Materials Structure Science, Fusion Science
Field Engineering for the Environment	Hydraulic and Aquatic Environment Engineering, Geotechnical and Material Engineering for Disaster Prevention
Engineering and Policy for Sustainable Environment	Engineering for Sustainable Infrastructure System, Policy for Engineering and Environment
Architectural and Structural Design	Structural and Urban Safety Design, Human Settlement Design
Human Environmental Systems	Planning and Performances for Built Environment, Building Science and Space Planning
Environmental Engineering	Water Metabolic System, Environmental Management Systems
Sustainable Resources Engineering	Resources Engineering, Geoenvironmental Engineering

CHEMICAL SCIENCES AND ENGINEERING	
Chemical Sciences and Engineering	Chemical Sciences and Engineering, Molecular Chemistry and Engineering Course, Materials Chemistry and Engineering Course, Biological Chemistry and Engineering Course

PUBLIC POLICY	
Public Policy	Public Management, International Relations, Technology Policy

INSTITUTES AND CENTERS	
Institute of Low Temperature Science	Water and Material Cycles, Frontier Ice and Snow Science, Environmental Biology, Pan-Okhotsk Research Center
Research Institute for Electronic Science	Photonics and Optical Science, Material and Molecular Science, Biology and Life Science, Mathematical and System Science, Green Nanotechnology Research Center
Institute for Genetic Medicine	Molecular Pathogenesis, Pathophysiology, Disease Control, Matrix Medicine, ROYCE' Health Bioscience, Probiotics Immunology
Catalysis Research Center	Surface Structure Chemistry, Interfacial Spectrochemistry, Catalytic Reaction Chemistry, Catalytic Materials Chemistry, Molecular Catalysis Chemistry, Catalytic Transformation, Catalytic Assemblies, Catalytic Theoretical Chemistry, Target Oriented Research Assembly
Slavic Research Center	Russia, Siberia and Far East, Central Eurasia, Eastern Europe, Comparative Regional Studies
Information Initiative Center	Information and Communication Technology
The Hokkaido University Museum	Research of Academic Samples
Research Center for Integrated Quantum Electronics	Quantum Crystal Photonics, Quantum Intelligent Devices, Integrated Quantum Systems, Quantum Integrated Processing
Field Science Center for Northern Biosphere	Bioresource Development, Ecosystem Conservation, Sustainable Bioproduction, Biodiversity, Ecosystem Function, Population and Community Ecology
Center for Advanced Tourism Studies	Tourism
Office of International Affairs	Japanese, Japanese Culture, Japanese Studies
Institute for the Advancement of Higher Education	Higher Education, Lifelong Learning and Sports Science, Admission Systems, Communication in Science and Technology Education and Research Program



PROGRAMS OFFERED IN ENGLISH

Hokkaido University offers a total of six degree programs taught entirely in English.

Engineering	(e ³) Master's or Doctoral Program in Engineering "English Engineering Education Program (e ³)" www.eng.hokudai.ac.jp/e3	Chemical Sciences & Engineering	Doctoral Program in Chemistry and Materials Science "International Program of Ph.D. Degree, Advanced Graduate Schools of Chemistry and Materials Science" www.eng.hokudai.ac.jp/ags/
Agriculture	Master's or Doctoral Program in Agricultural Sciences "Special Postgraduate Program in Biosphere Sustainability Science" www.agr.hokudai.ac.jp/timeline/exam.html	Veterinary Medicine	Doctoral Program in Veterinary Research "Fostering Global Leaders in Veterinary Science Toward Contributing to "One Health" (Program for Leading Graduate Schools) www.vetmed.hokudai.ac.jp/onehealth/en/ "Special Training Program for Veterinary Researchers toward building an international network of veterinary researchers" http://www.vetmed.hokudai.ac.jp/PGP/cover_page.html
Life Sciences	Doctoral Program in Life Sciences "Training Program for Global Leaders in Life Sciences" http://altair.sci.hokudai.ac.jp/grad/igp/	Science	Master's or Doctoral Program in Natural History Sciences "International Program in the Natural History Sciences" for Young Scientists of the Next Generation www.sci.hokudai.ac.jp/grp/i-nhs/home/

SCHOLARSHIP INFORMATION

Japanese Government Scholarship

There are three methods to secure a "Monbukagakusho Scholarship."

- ① One method to apply for a scholarship is to receive a recommendation to MEXT from the Japanese Embassy or Consular Office in your country. To receive a recommendation, you need to pass a primary screening conducted by the local embassy with cooperation from your country's government. For more details, enquire at your local Japanese Embassy or Consular Office.
- ② Students coming to Hokkaido University can also apply through our University. Application is made through your prospective advisor. University recommendation is only available to Graduate Level Research students. Undergraduate Students are ineligible to apply. For details, visit our website.
- ③ Domestic Selection
This category targets self-supported students currently studying in Japan.

Hokkaido University (pre-enrolment application)

Special Grant Program for Self-Supported International Students

This program is for prospective international students seeking Doctoral degrees. Applicants are eligible to apply to become Research Assistants and have their tuition fees waived. To obtain this special grant, applicants must have excellent academic records and be able to prove how their research can contribute internationally in their chosen field.

Private Scholarships (pre-enrolment application)

Panasonic Scholarship

Monthly Amount :¥150,000~180,000

Open to citizens of China, Indonesia, Malaysia, the Philippines, Thailand, Taiwan, Vietnam, and India who plan to study in a Master's Program in Science or Engineering, (excludes Medical, Pharmaceutical, and Dental Sciences) Applicants must possess sufficient Japanese language skills to study at a Japanese university. For details, please visit Panasonic online at: <http://panasonic.net/scholarship/requirements/>

AUN/SEED-Net (JICA)

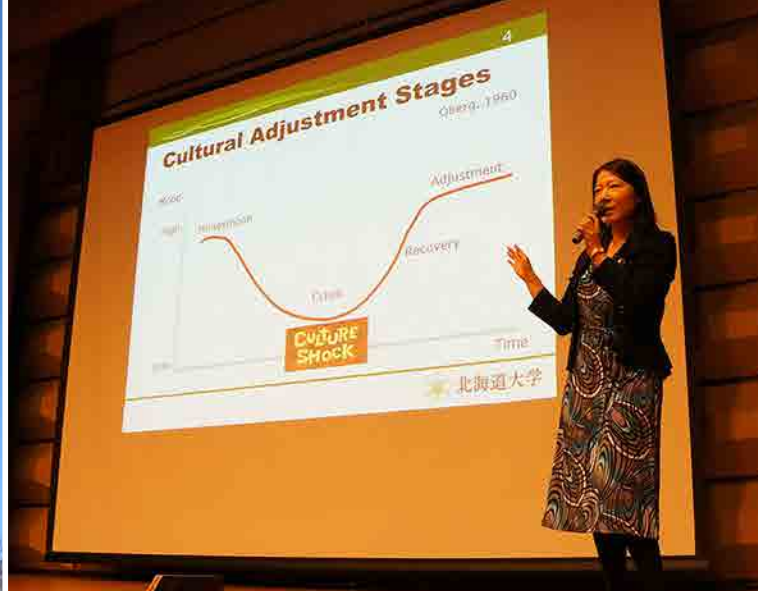
Open to citizens of ASEAN countries who are conducting study in Engineering fields at AUN/SEED-Net Member Institutions. Scholarship covers tuition fees, living expenses, health insurance, and round-trip air ticket as per JICA regulations. For details, please visit the JICA Project Office for AUN/SEED-Net Website at : www.seed-net.org/

JASSO (Japan Student Service Organization)

This scholarship is open to undergraduate students(¥48,000 monthly) taking the Examination for Japanese University Admission for International Students (EJU) www.jasso.go.jp/eju/question_e.html or Graduate Students (¥65,000 monthly) who intend to enrol in a school that has an admission system that does not involve an examination. Pre-arrival application.

For a full list of private scholarships available, please visit: www.jasso.go.jp/study_j/documents/scholarshipse_reserve.pdf
Although highly competitive, there are a variety of scholarships that students can apply for after arriving in Japan.

Around 48% of Hokkaido University's International Students receive some form of scholarship.



Once you get to Hokkaido you're not alone. We run a wide range of services to help you get the most out of your time here, to prepare for life beyond university, and to help you if times get tough. These are just a few of the ways we will support your health and welfare, academic life, and career planning during your time with us. The OIA specializes in providing the following services :

Supporter System

The International Student Supporter System is designed to provide assistance to first-comers to Sapporo to ensure that International Students commence their lives in Hokkaido smoothly. Newly arrived International Students are paired up with an enrolled Japanese student and are given help in the form of airport or Sapporo station pick-ups, accommodation advice, and administrative support. (eg. dealings with the local government office, help setting up a bank account, etc.)

Student Support Desk

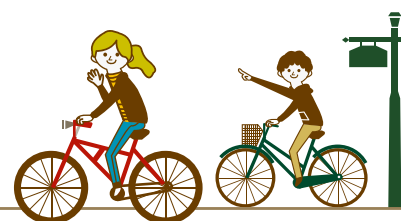
At the Student Support Desk, experienced International Students provide consultation and can answer any questions you may have. Need help reading Japanese documents? Don't understand procedures you need to carry out at your local government office? Want advice on where to shop? Don't hesitate to drop into the Student Support Desk directly and ask away. Support provided in Japanese and English and other languages (depending on staff rotation e.g. Chinese.)

Counselling Service

Being far away from your family and friends, you may experience homesickness and loneliness. Starting your study in a new environment may cause anxiety, and adjusting to a different culture and climate can also be tough. Many people feel anxious and stressed when going through changes and life transitions. If you are experiencing any difficulties in your study, career decision-making, inter-personal relationships, or cultural adjustment, do not hesitate to ask for help. The OIA counselor can help you resolve your difficulties and provide with you with professional advice.
Language : Japanese or English

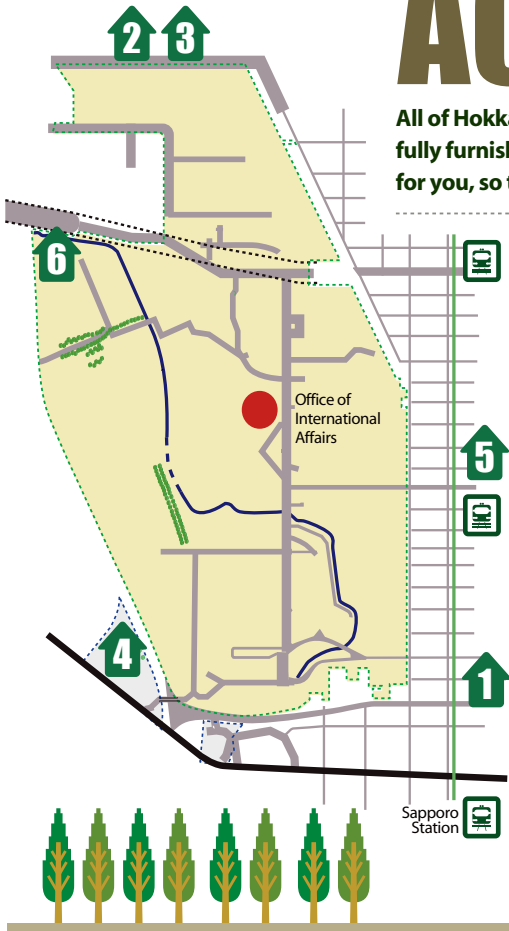
Career Support

The Career Center provides various job search support including resume critique, mock interviews, career advice, and seminars. If you are planning on gaining employment in Japan, you should start your job search process early. We encourage you to take advantage of the rich resources at the Career Center.



ACCOMMODATION

All of Hokkaido University's dormitories are located within walking distance from Sapporo Campus, and are fully furnished with internet access. Our Office of International Affairs can help organize initial accommodation for you, so that you don't have to worry about looking for a place to stay upon arrival in Sapporo.



Hokkaido University International House Kita 8 East

252 Room
Men's Dormitory

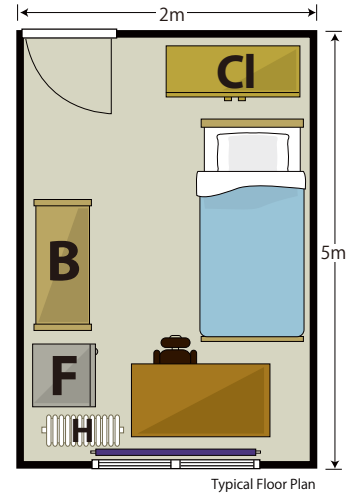
Rent: ¥19,500~25,000 (\$215-\$275USD) per month
Utility charges: ¥5,000~18,000 (\$55-\$200USD) per month



Bed, Desk, Bookshelf, Fridge, Heater. Also with closet.



Shared Kitchen



Typical Floor Plan

Hokkaido University offers a total of 642 rooms for singles, couples, and families!



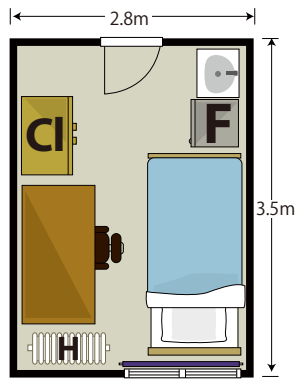
Hokkaido University International House Kita 23 Building 2

96 Room Women's Dormitory

Rent: ¥17,400 (\$190USD) per month
Utility charges: ¥5,000~10,000 (\$55-\$110USD) per month



Closet, Bed, Desk, Fridge, Heater. Also with private sink.



Typical Floor Plan



Shared Dining Room



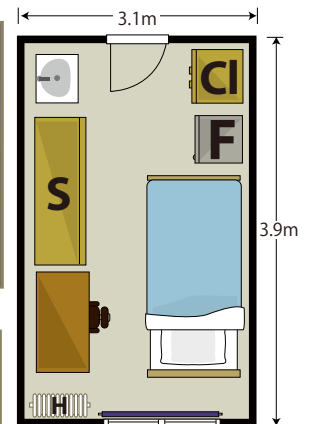
Hokkaido University International House Kita 23 Building 1

86 Room Unisex Dormitory

Rent: ¥14,000 per month (\$155USD)
Utility charges: ¥5,000~10,000 (\$55-\$110USD) per month



Bed, Desk, Bookshelf, Sink.
Also comes with Fridge, Closet and Heater



Typical Floor Plan



Shared Kitchen

CI = Closet F = Fridge B = Bookshelf S = Shelf Ca = Cabinet H = Heater W = Washing Machine M = Microwave

Want

The month private ren months re You can als *For more



Hokkaido University International House Kita 8

87 rooms for singles

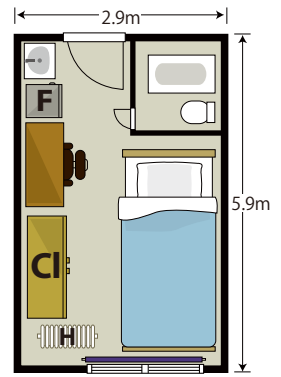
Rent: ¥18,000
(\$200USD) per month
Utility charges:
¥2,000~5,000
(\$22-\$55USD)
per month



Closet, Desk, Fridge, Bath/toilet, Heater, Kitchen
Also with own Bath/Toilet



Bed, Heater

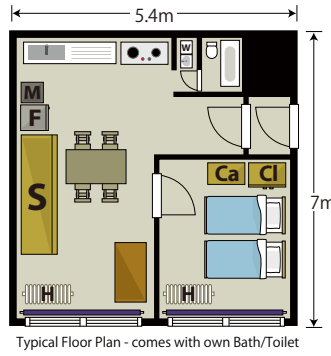


20 rooms for couples

Rent: From ¥9,500~20,000
(\$105-\$220USD) per month



Dining Area

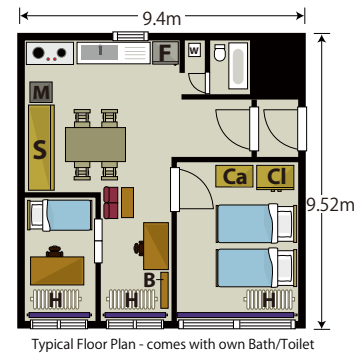


40 rooms for families

Rent: ¥14,200 (\$155USD) per month



Loungeroom



Fridge, Microwave, Kitchen, Fridge



Bedroom



Separate Room for Children



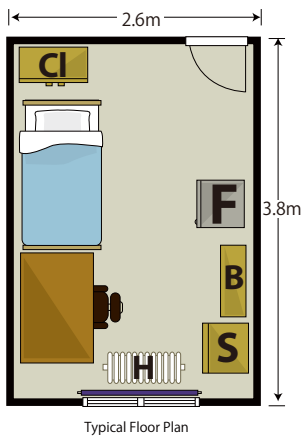
Kitchen



Sosei-Ryo

21 Room Women's Dormitory

Rent: ¥4,300~4,700 (\$52USD) per month
Utility charges: ¥5,000~7,000 (\$55-\$75USD)
per month



Bed, Desk and Heater



Closet and Desk



Keiteki-Ryo

40 Room Men's Dormitory

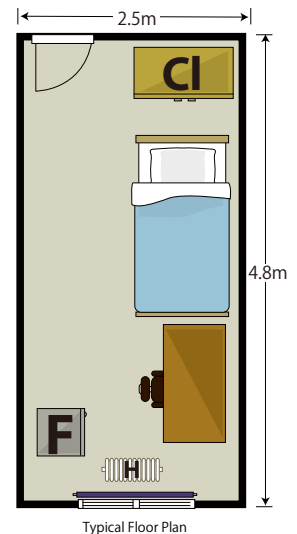
Rent: ¥4,700 (\$52USD) per month
Utility charges - ¥5,000~7,000 (\$55-\$75USD)
per month



Bed, Desk, Fridge, Heater. Also with Closet.



Shared Kitchen



Want to rent privately?

Monthly rent for a one bedroom apartment runs in the range of ¥30,000 - 40,000 (\$330-\$440 USD). Approximately 50% of International Students reside in private rental housing. Most private rental housing is unfurnished, so you will need to provide your own furniture and bedding. Also, you will need to have a guarantor co-sign the lease and pay the equivalent of 4 or 5 months rent to cover such things as the deposit, agent's commission, and initial rent. For international students who have difficulties finding a guarantor, the University may act as a guarantor. You can also search for a room in English using the Co-op.

For more information on accommodation for International Students, please refer to our website or enquire at the Division of International Services, Office of International Affairs.





COST OF LIVING

Hokkaido is the northernmost region of Japan, consisting of one large island and 509 surrounding islands. Dotted the center of the main island are mountain ranges and impressive volcanoes surrounded by sweeping coastal plains. The islands' total land mass is 83,000km² which makes up 22% of the total land mass of Japan. Sapporo is known for its amazing food, unique history, natural beauty, and cosmopolitan character.

With its fashionable restaurants, cafe culture, and relaxed atmosphere, it's often rated as one of the most desirable places to live in Japan. Sapporo offers a high quality lifestyle with its perfect blend of bustling city life and the natural peace of the great outdoors.

How much money will I need?

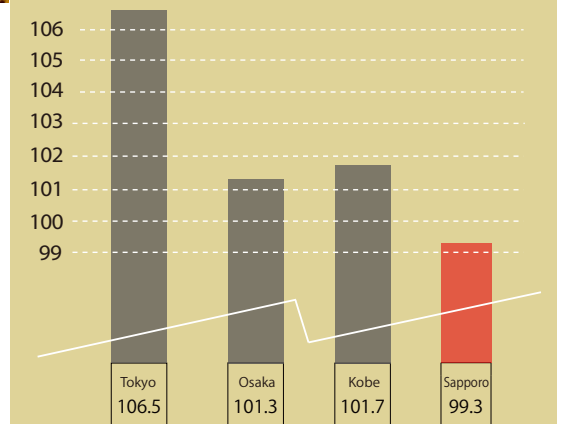
Sapporo provides an excellent quality of life and a cost of living more reasonable compared with other major cities in Japan. Your budget will depend on the lifestyle you choose to lead (eating in restaurants or cooking at home, living in private accommodation or in University dormitories). Generally with tuition costs included, you should budget for ¥1,500,000 per year (\$6,500 USD).

Budget For
¥75,000~110,000
(\$825-\$1210 USD)
per month



Housing ¥30,000~40,000 (\$330-\$440 USD)	Food ¥20,000~35,000 (\$220-\$390 USD)
Books ¥10,000~15,000 (\$110-\$165 USD)	Misc ¥15,000~20,000 (\$165-\$220 USD)

*The above are estimated costs and should be used as a guide only.



Regional Differences in the Average Consumer Price Index

www.stat.go.jp/data/cpi/
Reference : Ministry of Internal Affairs and Communications, Japanese Government, 2010

April>>>6C/43F May>>>11C/52F June>>>16C/61F July>>>20C/68F August>>>22C/72F September>>>17C/63F



SPRING Pleasant temperatures with an abundance of colors

SUMMER Warm days full of sunshine with temperate mornings and evenings

April	May	June	July	August	September
Keiryu Koinobori (Jozankei Hot Spring Area)	Sapporo Lilac Festival (Odori Park)	Hokkaido Shrine Festival (throughout the city) YOSAKOI Soran Festival (Odori Park)	Toyohira River Fireworks (Toyohira River) Pacific Music Festival (Sapporo Art Park)	Sapporo City Jazz (Odori Park and Sapporo Art Park) Sapporo Summer Festival (Odori Park)	Dai-Don-Den! Street performances (Ekimae-dori) Sapporo Autumn Festa (Odori Park)

EVENTS IN SAPPORO



HOKKAIDO CLIMATE

*average daily temperatures

October>>>10C/50F November>>>4C/39F December>>>-3C/27F January>>>-6C/21F February>>>-5C/23F March>>>-1C/30F



AUTUMN All the beautiful colors of Autumn

WINTER Refreshing and invigorating days with sun and powdery snow

October	November	December	January	February	March
Sapporo Marathon (downtown Sapporo) Sapporo International Short Film Festival (downtown Sapporo)	Sapporo Art Stage (throughout the city) Sapporo White Illumination (Odori Park, Ekimae-dori)	Christmas Market in Sapporo (Odori Park)	World Cup Ski-Jumping Tournament (Okurayama Ski Jump)	Sapporo Snow Festival (Odori Park)	Mt. Moiwa Ski-Ground Festival (Mt. Moiwa)



art
jazz
judo
rugby
skate
dance
futsal
chorus
boating
jogging
surfing
archery
curling
boxing
rakugo
cycling
walking
yachting
handball
canoeing
volleyball
basketball
swimming
computers
gymnastics
architecture
field hockey
orienteering
cheerleading
film making
robot design
photography
horseback riding
mountaineering
ski and snowboard



STUDENT LIFE

At Hokkaido University, there is more to student life than just lectures and tutorials. An abundance of opportunities await International Students to become part of the many activities available on campus. Students can join one of over 250 clubs and societies, participate in sporting activities, visit the University's museum, attend a University festival like Hokudai-Sai or just relax with friends in one of the many University eateries in between lectures. Hokkaido University offers a world of potential fun for students to obtain new experiences and to make new friends. This diversity means that every student can find something that suits them, and meet like-minded people to share their interests. Joining a club, circle, or society is simple! During Orientation Week of each semester, students just need to sign up at the club's booth.



CONTACT US

Graduate School

Graduate School of Letters

www.let.hokudai.ac.jp ryugaku-sup@let.hokudai.ac.jp

Graduate School / Faculty of Education

www.edu.hokudai.ac.jp edkyomu@edu.hokudai.ac.jp

Graduate School of Law

www.juris.hokudai.ac.jp gakuji@juris.hokudai.ac.jp

Graduate School of Economics and Business Administration

www.econ.hokudai.ac.jp eco-ryugaku@econ.hokudai.ac.jp

Graduate School of Medicine

www.med.hokudai.ac.jp/daigakuin/index.html d-tanto@med.hokudai.ac.jp

Graduate School / Faculty of Health Sciences

www.hs.hokudai.ac.jp intloffice@hs.hokudai.ac.jp

Graduate School of Dental Medicine

www.den.hokudai.ac.jp/contents/index.html kyomu@den.hokudai.ac.jp

Graduate School of Veterinary Medicine

www.vetmed.hokudai.ac.jp kyomu@vetmed.hokudai.ac.jp

Graduate School of Information Science and Technology

www.ist.hokudai.ac.jp kyomu-t@ist.hokudai.ac.jp

Graduate School of Environmental Science

www.ees.hokudai.ac.jp gakuju@ees.hokudai.ac.jp

Graduate School / Faculty of Science

www.sci.hokudai.ac.jp/graduate daigakuinky@sci.hokudai.ac.jp

Faculty of Pharmaceutical Sciences

*Entry for research students only

www.pharm.hokudai.ac.jp/ kyomu@pharm.hokudai.ac.jp

Graduate School / Research Faculty of Agriculture

www.agr.hokudai.ac.jp kyomu@agr.hokudai.ac.jp

Graduate School of Life Science / Faculty of Advanced Life Science

www.lfsci.hokudai.ac.jp/gakuin daigakuinky@mail.sci.hokudai.ac.jp

Graduate School of Chemical Sciences and Engineering

www.cse.hokudai.ac.jp c-sougou@cse.hokudai.ac.jp

Graduate School / Faculty of Engineering

www.eng.hokudai.ac.jp/graduate kokusai@eng.hokudai.ac.jp

Graduate School of International Media, Communication, and Tourism Studies / Research Faculty of Media and Communication

www.imc.hokudai.ac.jp/ nyuushi@imc.hokudai.ac.jp

Graduate School / Faculty of Public Policy

www.hops.hokudai.ac.jp kyomu@juris.hokudai.ac.jp

Graduate School / Faculty of Fisheries Sciences

www2.fish.hokudai.ac.jp kyoumu@fish.hokudai.ac.jp

Research Centers and Institutes

Institute of Low Temperature Science

www.lowtem.hokudai.ac.jp/index.html kyodo@pop.lowtem.hokudai.ac.jp

Research Institute for Electronic Science

www.es.hokudai.ac.jp k-kenkyo@jimuhokudai.ac.jp

Institute for Genetic Medicine

www.igm.hokudai.ac.jp d-tanto@med.hokudai.ac.jp

Catalysis Research Center

www.cat.hokudai.ac.jp k-kenkyo@jimuhokudai.ac.jp

Slavic Research Center

http://src-h.slav.hokudai.ac.jp jimuhokudai@slav.hokudai.ac.jp

Information Initiative Center

www.iic.hokudai.ac.jp kyodo@oicte.hokudai.ac.jp

Office of International Affairs

www.hokudai.ac.jp/en rkouryu@oia.hokudai.ac.jp

Institute for the Advancement of Higher Education

http://educate.academic.hokudai.ac.jp/center/index.asp
soumu@academic.hokudai.ac.jp

The Hokkaido University Museum

www.museum.hokudai.ac.jp museum-jimuhokudai@museum.hokudai.ac.jp

Research Center for Integrated Quantum Electronics

www.rciqe.hokudai.ac.jp rciqeadmin@rciqe.hokudai.ac.jp

Field Science Center for Northern Biosphere

www.hokudai.ac.jp/fsc kyoryoku@fsc.hokudai.ac.jp

Center for Advanced Tourism Studies

www.cats.hokudai.ac.jp nyuushi@imc.hokudai.ac.jp

Overseas Offices

Do you live near one of our Overseas Offices?

The Hokkaido University Beijing, Seoul, Helsinki, and Lusaka Offices were established to provide more information and services regarding the University and its entrance examinations to potential students like yourself. Feel free to contact them at the addresses listed below.



Beijing Office

Resource Building Room 806, Zhongguancun Beidajie No.151, Haidian, Beijing 100080 China (in the southeastern corner area of Peking University campus)

+86-10-5887-6455 FAX: +86-10-5887-6456

http://www.hokudai.cn/ beijing_office@hokudai.cn

Office Hours: Weekdays 10:00-17:00 (closed on Saturdays, Sundays, Chinese national holidays)



Seoul Office

703, Handuk Building, 649-4, Yeoksam-Dong, Gangnam-Gu, Seoul, Korea 135-912

+82-2-501-9400 FAX: +82-2-501-9410

http://www.hokudai.kr seouloffice@hokudai.kr/

Office Hours: Weekdays 09:00-18:00

(closed on Saturdays, Sundays, Japanese national holidays)



Helsinki Office

Fabianinkatu 26, 00100 Helsinki, Finland

+358-44-757-5135

http://www.hokudai.fi helsinki_office@oia.hokudai.ac.jp

Office Hours: Weekdays 09:00-11:00, 13:00-16:30

(closed on Saturdays, Sundays, and Finnish national holidays)



Lusaka Office

c/o Department of Disease Control, School of Veterinary Medicine, Uni. of Zambia (Great East Rd. Campus), P.O. Box 32379, Lusaka 10101, Zambia

+260-211-292627

http://www.hokudai.ac.jp/en/relations/lusaka_oia.html

lusaka_office@oia.hokudai.ac.jp

Office Hours: Weekdays 9:00-12:00, 13:00-16:30 (closed on Saturdays, Sundays, and Zambian national holidays)





HOKKAIDO
UNIVERSITY

CONTACT

Office of International Affairs

Division of International Relations

Kita 15, Nishi 8, Kita-ku, Sapporo, 060-0815

☎ +81-(0)11-706-8023

✉ info@oia.hokudai.ac.jp

Division of International Services

Kita 15, Nishi 8, Kita-ku, Sapporo, 060-0815

☎ +81-(0)11-706-8053

✉ ryugaku@oia.hokudai.ac.jp

Hokkaido University International Student Prospectus 

<http://www.hokudai.ac.jp/en>



 Design : Kurando IKEDA <http://ikedakurando.com/> All rights reserved : Office of International Affairs