

Hokkaido University Guidebook

2012–2013



HOKKAIDO
UNIVERSITY

Welcome to the 2012–2013 Hokkaido University Guidebook

This Guidebook is a compilation of facts and figures about Hokkaido University, and includes information on our organizational structure, facilities, faculties, and academic offerings. It is intended mainly to help those unfamiliar with the University gain some understanding of what we offer, but also provides fresh insight to those already associated with us. We hope you find it useful.

For an online printable version, please visit our website at www.hokudai.ac.jp/en

Message from the President

It is my great pleasure to welcome you to Hokkaido University....

Hokkaido University was founded in 1876 as Sapporo Agricultural College – remarkably the nation's first institute of higher education to award bachelor degrees. The phrase "Be ambitious!" which serves as Hokkaido University's motto was spoken by Dr. William Clark, the very first Vice-Principal of the college. The University is dedicated to transforming our campus into a global base for education and research as we uphold our four basic philosophies: "The Frontier Spirit," "Global Perspectives," "All-round Education" and "Practical Learning" – philosophies which have evolved with the University over its 136 year history.



Improvement and Internationalization of Education

Hokkaido University aims to produce internationally minded graduates by encouraging comprehensive personal development through both general and specialized teaching. Based on this, we have implemented drastic reforms to our entrance examination system and are stepping up efforts to offer attractive educational and research programs. We are striving to become a global educational and research center, promoting education in foreign languages, providing a world-class environment for study and research open to the world.

Internationalization of Research

Hokkaido University is strengthening the foundation of education and research by placing an increased emphasis on graduate education. We are making our educational and research departments more efficient by promoting flexibility in their organizational structure. In addition, we are advancing a faculty and graduate school framework that aims to conduct pioneering and interdisciplinary research and education.

Partnerships with Society

Hokkaido University is incorporating new ways to enhance our public profile: we are utilizing our offices in Seoul, Beijing, Helsinki, and Lusaka as bases to transmit information to overseas markets, improving our websites and public relations materials, and hosting a multitude of events open to the public. In addition, we plan to further enhance and utilize our bases, including the Creative Research Institution and the Center for Innovation and Business Promotion for joint research projects with local industry in order to better share the fruits of our research activities and strengthen cooperation with society.

Our Vision

Aiming to take more initiative and become more self-reliant than ever, Hokkaido University established the "Hokkaido University Frontier Foundation" on the occasion of our 130th anniversary. The Hokkaido University Frontier Foundation aims to enhance the University's contribution to society both locally and internationally. The Foundation will strive to improve education and research whilst bolstering student support. Hokkaido University is committed to carrying out further visionary university reforms and go beyond boundaries in our quest to uphold our fundamental philosophy - to embody 'the frontier spirit.'

A handwritten signature in black ink, which appears to read "Hiroshi Saeiki".

Message from the Editor:

This Guidebook has been prepared by the Office of International Affairs for the purposes of information distribution. Although every effort has been made to make this Guidebook accurate and complete, the information provided is subject to change or correction. Wherever possible, we would advise to check the website for the most up-to-date information. If you have any questions concerning this Guidebook, please contact Warren Pohl, International Marketing and Publications Coordinator at pr@oia.hokudai.ac.jp

University Calendar 2012–2013

Entrance Ceremony*	Apr 6, 2012
First Semester Class Commencement*	Apr 10, 2012
Summer Vacation*	Aug 6 to Sept 26, 2012
Second Semester Class Commencement*	Sept 27, 2012
Winter Vacation*	Dec 27, 2012, to Jan 4, 2013
Class Re commencement*	Jan 7, 2013
Semester Two End*	Feb 4, 2013
Entrance Ceremony*	Early Apr, 2013 TBA
First Semester Class Commencement*	Early Apr, 2013 TBA
Hokkaido University Foundation Day	Jun 7, 2013
Hokkaido University Festival	Early Jun, 2013 TBA

Be ambitious.
Inazo Nitobe.



be ambitious!

In the words of
Dr. W.S. CLARK, Hokkaido
University's motto "Be Ambitious"
illustrated left by Inazo NITOBÉ (1862–1933)
author, diplomat, statesman, educator
and distinguished graduate of
Hokkaido University.

Our Four Basic Philosophies

1. Frontier Spirit

The Frontier Spirit represents the idealism that each student and staff member of our University should take up the problems of their generation and resolutely mark out a new path. This basic philosophy originated from the words "lofty ambition" spoken by Dr. W. S. Clark during the opening ceremony of Sapporo Agricultural College and has served as the backbone of Hokkaido University for over a century. The Frontier Spirit of the 21st century embodies constantly re-evaluating the world to keep abreast of shifts in the academic paradigm and new problems constantly challenging humankind. Hokkaido University aims to promote world class research to solve problems confronting humankind while promoting creative research for the sake of research.

2. Global Perspectives

With the introduction of western customs and scientific technology, Sapporo Agricultural College was open to new ideas from its inception. Hokkaido University now plays an active role in placing graduates in positions overseas as our philosophy of obtaining the "Global Perspective" takes on many new and exciting forms. One of our highest priorities is to nurture "international scholars" by cultivating unique and strong ties with academic bodies overseas, and by bolstering foreign language education in the liberal arts at home. Hokkaido University encourages staff to acquire "Global Perspectives" not only by creating opportunities for studying and researching abroad, but by also accepting foreign students and researchers to our University to promote cultural and social exchange with people from all around the world.

3. All-round Education

Sapporo Agricultural College was established not only to train agricultural experts, but also to imbue graduates with a rich humanity, a high intellect, and a broad knowledge base. The result is a long list of outstanding ideologists and literary figures. Amongst our alumni are Kanzo UCHIMURA, Shigetaka SHIGA, Inazo NITOBÉ, and Takeo ARISHIMA. The philosophy of All-round Education has been cultivated through the tradition of focusing attention on the liberal arts. Hokkaido University seeks to teach students to respect human rights and to develop the ability to accurately respond to the demands of society by cultivating a spirit of freedom and independence and by encouraging the establishment of a strong autonomous identity.

4. Practical Learning

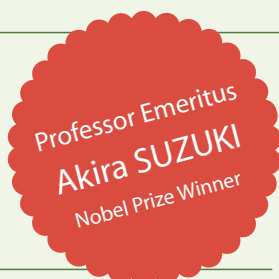
The philosophy of Practical Learning was established from two ideologies. First, research as the creation of universal learning in the real world, and second, emphasis on returning the fruits of research to society. The botanical research conducted by Kingo MIYABÉ as well as the research on snow conducted by Ukichiro NAKAYA, both carried out in the vast wilderness of Hokkaido, are outstanding examples of research in finding universal truths in our immediate environments. Hokkaido University also endeavors to develop leading experts and professionals to enrich continuing education as we return the fruits of research to local, national, and international industries, by promoting academia-industry-government collaboration.

*dates relate to first year U/G students only. Please consult each faculty / school for relevant calendars.



Honor Roll

Nobel Prize



Major Awards Issued to SUZUKI

1989	Chemical Society of Japan Award
2003	Japan Academy Award
2010	Nobel Prize, Chemistry
2010	Prime Minister's Certificate of Appreciation

Recipients of the Order of Culture

The prestigious Order of Culture Prize was established in 1937. This order is awarded to persons that have contributed to Japan's art, literature, or culture. The order is conferred by the Emperor of Japan in person on Culture Day on November 3 each year.

Name	Year	Title	Reason
Kingo MIYABE	1946	Professor Emeritus	Botanical study
Akira SUZUKI	2010	Professor Emeritus	Developing a chemical tool known as palladium-catalyzed cross-couplings for organic boron compounds

Designated as a Person of Cultural Merit by the Japanese Government

The system for Persons of Cultural Merit was established in 1951 by the Law on Pensions for the Persons of Cultural Merit. The purpose is to honor persons of cultural merit by providing a special government-sponsored pension.

Name	Year	Title	Reason
Shonen MATSUMURA	1954	Professor Emeritus	Entomological study
Seiya ITO	1959	Professor Emeritus	Phytopathological study of crop diseases and fungi
Tetsu SAKAMURA	1976	Professor Emeritus	Plant-cell study of wheat chromosome and plant-physiological study of mold
Man-emon TAKAHASHI	1995	Professor Emeritus	Genetic study of rice
Akira SUZUKI	2010	Professor Emeritus	Developing a chemical tool known as palladium-catalyzed cross-couplings for organic boron compounds.

Recipients of The Japan Academy Prize

Name	Year	Title	Reason
Yutaka KON	1934 (Imperial Academy Prize)	Professor of Medicine	Research on silver reaction of cells
Kinjiro KUNUGI	1939 (Imperial Academy Prize)	Professor of Science	Research on the theory of abstract spaces
Juro HORIUCHI	1940 (Imperial Academy Prize)	Professor of Science	Theoretical and experimental research on chemical kinetics
Ukichiro NAKAYA	1941 (Imperial Academy Prize)	Professor of Science	Physical investigations of snow
Seiji KAYA	1942 (Imperial Academy Prize)	Professor of Science	Magnetic studies of ferromagnetic crystals
Jun SUZUKI	1949	Professor of Science	Studies on ultrabasic rocks and the ore-deposits accompanying them
Sajiro MAKINO	1958	Professor of Science	Studies on chromosomes in animals
Teikichi FUKUSHI	1958	Professor of Agriculture	Studies on insect transmission of plant virus diseases
Seijin NAGAO	1965	Professor of Agriculture	Studies on twelve linkage groups in rice
Manemon TAKAHASHI	1965	Assistant Professor of Agriculture	Studies on twelve linkage groups in rice
Kotatsu FUJITA	1971	Professor of Letters	Study of early 'Pure Land Buddhism'
Yoshiaki ISHIZUKA	1975	Professor Emeritus	Nutrio-physiological studies on the rice plant, and application to rice production (joint research)
Akira TANAKA	1975	Professor of Agriculture	Nutrio-physiological studies on the rice plant, and application to rice production (joint research)
Izumi YOKOYAMA	1981	Professor of Science	Structure of volcanoes as disclosed by gravity anomaly distribution
Yoshio BAN	1984	Professor of Pharmacology	Studies of the synthesis of the indole group of alkaloids
Eishiro SHIKATA	1986	Professor of Agriculture	Studies on plant viruses and viroids
Toshiro KINOSHITA	1993	Professor of Agriculture	Genetical studies on the interaction between cytoplasmic and nuclear genomes, and the application of these studies to crop breeding
Eiko OHTSUKA	1996	Professor of Pharmacology	Synthesis and functional studies on nucleic acids: synthetic c-Ha-ras gene and related subjects (joint research)
Taro MATSUNO	1997	Professor of Environmental Earth Science	Elucidation of atmospheric dynamics in the stratosphere and mesosphere
Akira SUZUKI	2004	Professor Emeritus	Studies on the development of new synthetic reactions using palladium catalysts (joint research)
Hiroshi KIDA	2005	Professor of Veterinary Medicine	Studies on the control of influenza: mechanism of emergence of pandemic influenza virus strains in poultry, domestic animals and humans, and molecular basis of the neutralization of viral infectivity with antibodies





Contents

Introduction	
Message from the President	Preface
University Calendar, Our Four Basic Philosophies	1
Honor Roll	3
A Proud History	4-5
Organization	
Our Organization	6-7
Number of Staff	8-9
Faculties and Graduate Schools	10-20
Research Institutes and Centers	21-23
Research Centers	24-25
University Libraries	26
Hokkaido University Hospital	27
Students	
Number of Students, Degrees Granted	28
Offices Serving the Student Body	29
International	
Office of International Affairs	30
International Student Support	31
Programs offered in English / Inbound Exchange Programs	32
Outbound Exchange Programs	33
Off-Campus Offices	34
International Student Numbers	35-37
International Exchange Agreements	38-43
Research	
Research Coordination & Industry-University Collaborations	44
Research Partnerships	45
Research Activities	46
Finance	
University Revenue and Expenditure	47
Campus	
Sustainability / Health and Safety	48
Campus Information-Hakodate	49
Campus Information-Sapporo	50-51
Contact Us	52-53

Introduction

Organization

Students

International

Research

Finance

Campus

Timeline

Sapporo Agricultural College (1876–1907)

- 1876 - Dr. William S. Clark, then president of the Massachusetts Agricultural College in the United States is invited to be Vice Principal of Sapporo Agricultural College. He arrives in Sapporo with two American professors and 11 students
- 1876 - The Book Stack Room, later to become the University Library opens
- 1877 - The Model Barn, one of the first buildings of the University and still existing today is completed
- 1878 - The martial arts training facility (current Sapporo Clock Tower) is constructed
- 1886 - The Botanic Garden is designed and built

Tohoku Imperial University (1907–1918)

- 1907 - Sapporo Agricultural College becomes Agricultural College of Tohoku Imperial University
- 1908 - German teacher Hans Koller introduces the western two-blade ski on Sapporo Campus for the first time in Japan
- 1909 - The historical Furukawa Hall is completed in French Renaissance Style
- 1912 - The grand trees of the University's Poplar Avenue are planted as a wind break

Hokkaido Imperial University (1918–1947)

- 1918 - The University becomes the 5th prestigious university in mainland Japan to join a league of seven Imperial Universities formed by the Imperial Japanese government- This distinction continues to hold prominence in Japan today
- 1919 - The School of Medicine is established
- 1924 - The School of Engineering is established
- 1930 - The School of Science is established
- 1935 - Hakodate Campus opens, and the School of Fisheries transfers from Sapporo Campus
- 1936 - Dr. Ukichiro Nakaya successfully produces the world's first 'artificial snow crystal'
- 1941 - The Institute of Low Temperature Science is established
- 1943 - The Institute of Catalysis Research is established
- 1945 - The Administrative Office and the Student Affairs Office is established
- 1947 - The School of Law and Letters is established

Hokkaido University (1947–2004)

- 1947 - Hokkaido Imperial University is renamed Hokkaido University
- 1949 - Under the National School Establishment Law, Hokkaido University is reorganized into the new Hokkaido University with schools of law and letters, education, science, medicine, engineering, agriculture, and fisheries sciences (Hakodate)
 - The Medical Clinic Attached to the School of Medicine is renamed the Hospital Attached to the School of Medicine
 - The Department of Liberal Studies is established (renamed the School of Liberal Studies in April 1951)
- 1950 - The Institute of Tuberculosis Research established *now known as the Institute for Genetic Medicine
 - The School of Law and Letters divided into the School of Letters and the School of Law and Economics
- 1952 - The School of Veterinary Medicine is established
- 1953 - New Graduate Schools of Letters, Education, Law, Economics and Business Administration, Science, Engineering, Agriculture, Veterinary Medicine, and Fisheries Sciences are established
 - The School of Law and Economics is divided into the School of Law and the School of Economics and Business Administration
- 1955 - The Institute of Medical Research is established
- 1957 - The School of Liberal Studies is renamed the School of Liberal Arts
- 1958 - The Graduate School of Pharmaceutical Sciences is established
- 1965 - The School of Pharmaceutical Sciences and Pharmacy is established
- 1967 - The Dental School of Medicine is established
- 1970 - The Computer Center (joint-usage facility) is established *now known as the Information Initiative Center
- 1972 - The Health Management Center (Health Care Center) is established as well as the Physical Education Center
- 1974 - The Graduate School of Dental Medicine is established
- 1977 - The Graduate School of Environmental Science (stand-alone graduate school) is established
- 1978 - The Slavic Research Center is established as well as The Central Institute of Isotope Science
- 1981 - The Institute of Language and Cultural Studies is established as well as The Center for Experimental Plants and Animals
- 1985 - The Research Center for Molecular Genetics is established
- 1989 - The Institute of Catalysis Research evolves into the Catalysis Research Center (joint-usage research facility)
- 1990 - The Slavic Research Center is designated as a joint-usage research facility

- 1991 - The International Student Center is established as well as the The Research Center for Quantum Integrated Electronics
- 1992 - The Institute of Applied Electronics Research is reorganized into the Research Institute for Electronic Science
- 1993 - The Graduate School of Environmental Science evolves into the Graduate School of Environmental Earth Science
- 1994 - The Center for Advanced Research of Energy is established
- 1995 - The Center for Research and Development in Higher Education is established as well as The Environmental Preservation Center
- 1996 - The Center for Advanced Science and Technology is established as well as the Venture Business Laboratory
- The Information Processing Center evolves into the Education and Research Center for Information and Media Studies
- Hokkaido University Museum is established
- 2000 - The Graduate School of International Media and Communication Studies is established as a stand-alone Graduate School
- 2002 - The Creative Research Initiative "Sousei", the predecessor of the Creative Research Institution, is established
- The new training ship Ushio-maru becomes operational
- 2003 - The Research and Education Center for Brain Science is established
- The Management Center of Intellectual Property is established

National University Corporation Hokkaido University (2004 to present)

- 2004 - The Graduate School of Information Science and Technology is established as a stand-alone Graduate School
- The Center for Advanced Research of Energy evolves into the Center for Advanced Research of Energy Conversion Materials
- 2005 - The Graduate School of Public Policy and the Faculty of Public Policy are established
- The Research Center for Zoonosis Control is established
- The Admission Center is established
- The Hokkaido University Archives is established
- 2006 - The Center for Advanced Tourism Studies is established
- The Center for Language Learning is established
- The Center for Ainu and Indigenous Studies is established
- The Center for Experimental Research in Social Sciences is established
- Sustainability Weeks event is held for the first time
- 2008 - The Faculty of Health Sciences and the Graduate School of Health Sciences (for master's courses) is established
- The Research Institute for Information Law and Policy is established
- The Research Center for Environmental Nano and Bio Engineering is established
- The Research Center for Integrative Mathematics is established
- The Center for Sustainability Science is established
- 2009 - Hokkaido University is a joint host of the G8 University Summit and establishes the 'Sapporo Sustainability Declaration'
- The Center of Education and Research for Topological Science and Technology is established
- The North Branch of the Hokkaido University Library is renamed the North Library
- 2010 - The Graduate School of Chemical Sciences and Engineering is established
- The Graduate School of Health Sciences is established
- The Center for Environmental and Health Sciences is established
- The Office of International Affairs is established as an administrative unit, into which the International Student Center is transferred
- The Office for a Sustainable Campus is established
- Professor Emeritus Akira SUZUKI wins the Nobel Prize
- 2011 - The Center for Translational Research is established
- The Venture Business Laboratory is renamed the Meme Media Laboratory
- The Platform for Research on Biofunctional Molecules is established

Sapporo Agricultural College opened its doors in 1876, changed its name to Hokkaido Imperial University in 1918 and finally became Hokkaido University in 1947.

1876

2013



Introduction

Organization

Students

International

Research

Finance

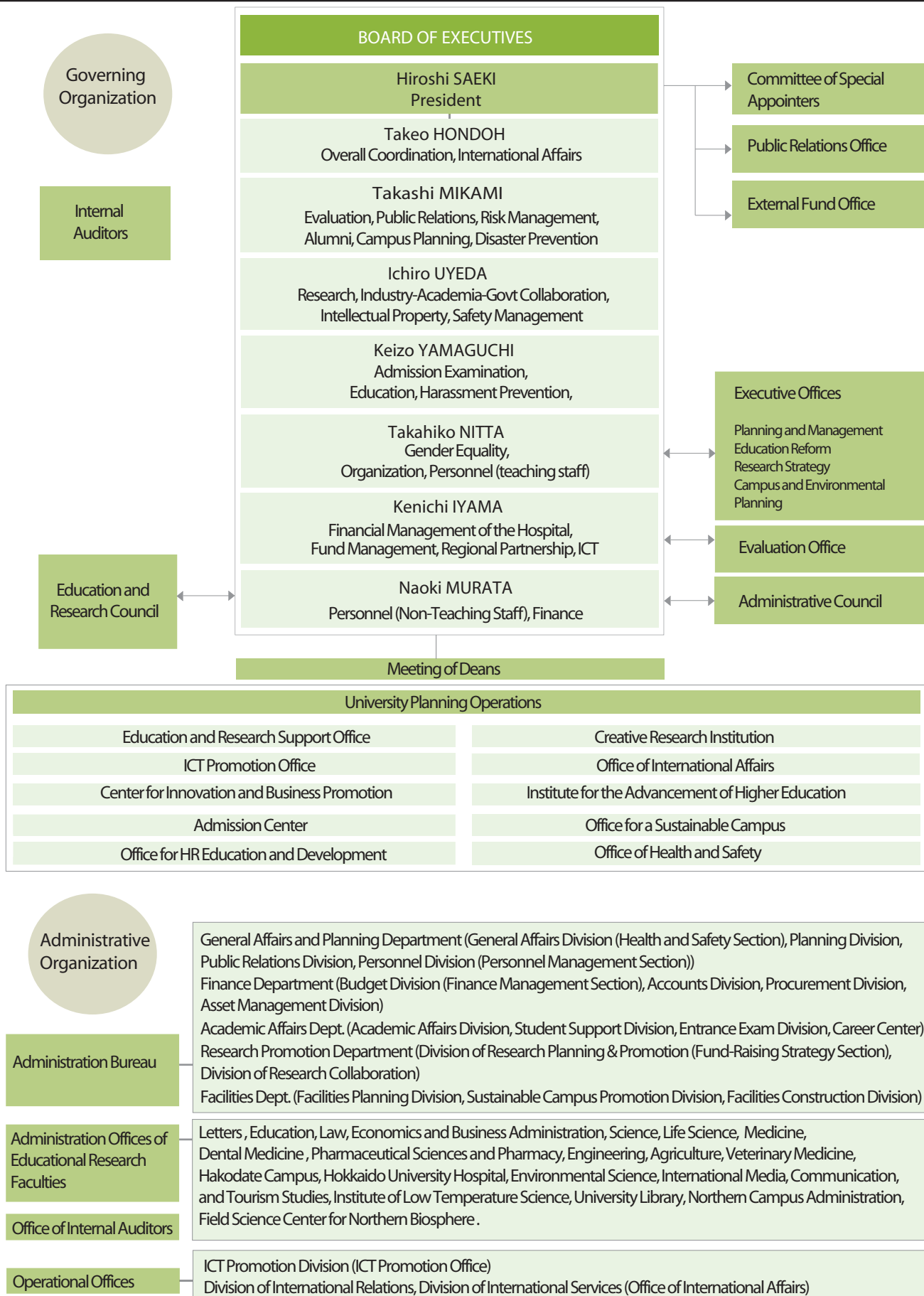
Campus

Our Organization



*Denotes joint usage research centers **Denotes joint usage educational facilities



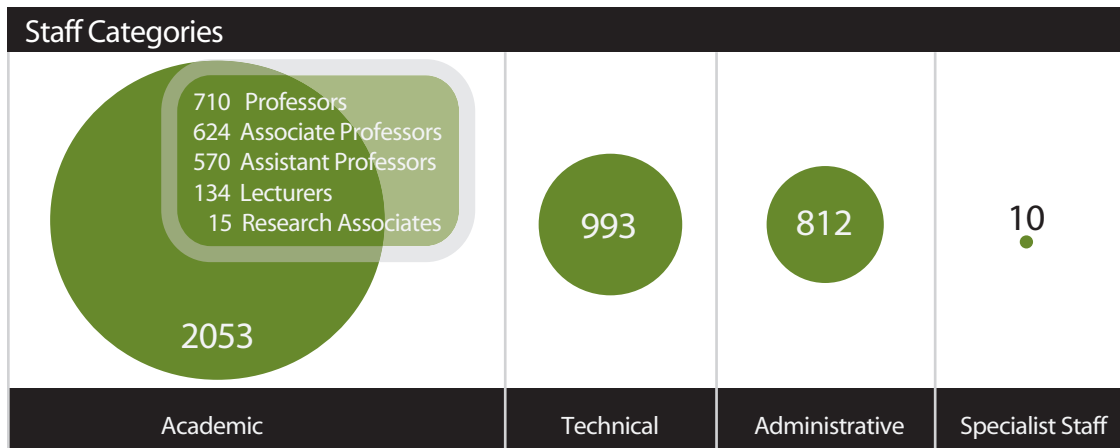


Number of Staff

Executive Board ~ 1 President, 7 Executives, and 2 Internal Auditors		Professors	Associate Professors	Lecturers	Assistant Professors	Research Associates	Specialist Staff	Administration	Technical Staff	TOTAL
STEERING	Education and Research Support Office									0
	Environmental Information Promotion Office							16	14	30
	Center for Innovation and Business Promotion	1					3			4
	Admission Center									0
	Front Office for Human Resource Education and Development									0
	Creative Research Institution		1				1		8	10
	Office of International Affairs	1	6	4			4	24		39
	Institute of Advancement of Higher Education	4	5						4	13
	Office for a Sustainable Campus									0
	Office of Health and Safety									0
	Letters	50	40		13				2	105
TEACHING STAFF	Law	33	18		7	4		2		64
	Economics and Business Administration	23	21		4	1	1			50
	Medicine	42	23	17	61	3			13	159
	Dental Medicine	17	15	1	48				4	85
	Veterinary Science	17	13	3	16				3	52
	Information Science and Technology	39	39		16					94
	Fisheries Sciences	33	40	1	11				39	124
	Environmental Science / Environmental Earth Science	21	25		10	1			57	57
	Science	75	68	8	49	2	1		20	223
	Pharmaceutical Sciences	15	12	3	27				3	60
	Agriculture	45	42	21	20				11	139
	Life Science / Advanced Life Science	13	5		10					28
	Education	17	16		5	1				39
	International Media, Communication and Tourism Studies	27	25		2					54
	Health Sciences	29	16	5	23	1				74
	Engineering	97	101	3	77	1			44	323
	Chemical Sciences and Engineering									0
	Public Policy	11	6	3						20
	Hokkaido University Hospital	5	17	56	84				662	824
	Institute of Low Temperature Science	15	10	2	18				9	54
	Research Institute of Electronic Science	15	12	1	20				10	58
	Institute of Genetic Medicine	9	8	2	17				7	43
	Catalysis Research Center	7	6		6				6	25
	Slavic Research Center	8	3		3	1				15
	Information Initiative Center	7	4		2					13
	Central Institute of Isotope Science	1	1		1				1	4
	The Hokkaido University Museum	2	3	1	3					9
	Research Center for Integrated Quantum Electronics	3	3		1					7
	Field Science Center for Northern Biosphere	16	11		11				75	113
	Meme Media Laboratory									0
	Research and Education Center for Brain Science									0
	Research Center for Zoonosis Control	5	4	1	2				2	14
	Hokkaido University Archives				1				1	2
	Center for Advanced Tourism Studies	2	2							4
	Center for Language Learning									0
	Center for Ainu & Indigenous Studies	2	3		1					6
	Center for Experimental Research in Social Sciences				1					1
	Research Institute for Information Law and Policy									0

*Numerical Data Indicates full-time dedicated staff.

		Professors	Associate Professors	Lecturers	Assistant Professors	Research Associates	Specialist Staff	Administration	Technical Staff	TOTAL
TEACHING STAFF	Research Center for Environmental Nano and and Bio Eng.									0
	Research Center for Integrative Mathematics									0
	Center for Sustainability Science	1								1
	Center for Education and Research for Topological Sci.&Tech.									0
	Center for Environmental and Health Sciences									0
	Center for Translational Research	1								1
	Health Care Center	1		2					9	12
ADMINISTRATION STAFF	General Affairs and Planning Department							66	1	67
	Finance Department							76		76
	Academic Affairs Department							61		61
	Research Promotion Department							28		28
	Facilities Department							9	26	35
	Office of Internal Auditors							4		4
	Graduate School of Letters / Faculty of Letters Office							15		15
	Faculty of Education Office							7		7
	Graduate School of Law/School of Law Office							17		17
	Economics and Business Administration Office							9		9
	Science / Life Sciences Office							39	2	41
	School of Medicine Office							37	2	39
	School of Dental Medicine Office							9	1	10
	School of Pharmaceutical Sciences and Pharmacy Office							12		12
	School of Engineering Office							68	3	71
	School of Agriculture Office							20	1	21
	School of Veterinary Medicine Office							12		12
	Hakodate Campus Office							22	4	26
	Office of Hokkaido University Hospital							112	6	118
	Graduate School of Environmental Science Office							10		10
	Int. Media, Communication and Tourism Studies Office							8		8
	Institute of Low Temperature Science Office							8		8
	University Library Office							90		90
	Northern Campus Administration							11		11
	Field Science Center for Northern Biosphere Office							20		20
	Office of Internal Auditors							4		4
	TOTAL		710	624	134	570	15	10	812	993



*Data as of May 1, 2012

*The four categories above do not include Executive Staff numbers.

Introduction

Organization

Students

International

Research

Finance

Campus

Faculties and Graduate Schools

Graduate School of Letters / Faculty of Letters

Broadly educated faculty members of the Graduate School of Letters and the Faculty of Letters help students build well-rounded characters, and use the wealth of their professional knowledge to assist students with their studies. Our mission is to assist graduates and undergraduates in developing holistic perspectives and acquiring the sound judgment necessary to understand the meaning of the physical world. In particular, the Faculty of Letters helps undergraduates acquire effective verbal skills, including foreign language skills, and learn to comprehensively understand human nature.

Graduate School

Philosophy and Cultural Sciences
 Philosophy, Ethics and Applied Ethics,
 Religious Studies and Indian Philosophy,
 Theory and History of Arts
 History and Area Studies
 Japanese History, Asian History, Occidental History,
 History and Anthropology, Northern Culture Studies,
 Slavic Studies*
 Linguistics and Literature
 Linguistics and Western Languages, Western Literature,
 Linguistic Sciences, Japanology, Sinology,
 Filmology and Cultural Studies of Representation
 Human Sciences
 Psychology, Behavioral Science, Sociology, Regional
 Sciences

Undergraduate School

Humanities and Human Sciences
 Philosophy and Cultural Sciences, History and
 Anthropology, Linguistics and Literature,
 Human Sciences



Graduate School of Law / School of Law

The mission of the Graduate School of Law is to develop the next generation of talented legal educators and academics; to develop business persons with sophisticated professional knowledge; and to nurture legal professionals with sophisticated legal knowledge and broad perspectives. The mission of the School of Law is to help undergraduates acquire the basic skills necessary to deal with complex, diverse social issues, and to help them develop leadership skills based on well-rounded characters and intellectual sensibility. Both schools offer a broad and diverse range of curricula.

Graduate School

Law and Political Studies
 Modern Law, Interdisciplinary Legal Studies,
 Political Studies, Advanced Institute for Law and Politics*
 Legal Practice
 Private Law, Public Law

Undergraduate School

Law
 Public Law, Private Law, Criminal Law,
 Social Law, Interdisciplinary Legal Studies, Political Studies



SUBNOTE: As a general rule, subjects and/or specialities are listed in black, and course names are those in cream font.

Graduate School of Economics and Business Administration / School of Economics and Business Administration

The mission of the School of Economics and Business Administration is to help undergraduates develop the leadership skills necessary to achieve innovation and ingenuity with a sense of mission and passion, and to help them achieve intellectual maturity that enables them to use professional knowledge and social ethics to deal with social issues. The mission of the Graduate School of Economics and Business Administration is to develop world-class scholars of economics and business administration and to nurture talented business professionals with extensive knowledge in economics and business administration as well as in closely related sciences. Both schools offer curricula that meet the needs of highly motivated students.

Graduate School

Modern Economics and Management
Economic Analysis, Social and Historical Economics, Economic Policy, Management Analysis
Accounting
Accounting

Undergraduate School

Economics
Economic Theory, Economic History, Applied Economics
Business Administration
Business Administration, Management Information



Graduate School of Medicine / School of Medicine

The mission of the Graduate School of Medicine is to help graduates cultivate professional ethics and well-rounded characters, and to help them master sophisticated medical knowledge and technical skills. The mission of the School of Medicine is to help undergraduates develop the professional ethics and well-rounded characters required for medical professionals; to help them acquire sophisticated medical knowledge and skills and learn to continually improve them throughout their professional careers; and to help them learn to work with other professionals to provide advanced medical care as a team.

Graduate School

Medicine
Biochemistry, Anatomy, Physiology, Pharmacology, Pathology, Microbiology, Preventive Medicine, Forensic Medicine and Medical Informatics, Internal Medicine, Radiology and Nuclear Medicine, Surgery, Anesthesiology and Critical Care Medicine, Reconstructive Surgery and Rehabilitation Medicine, Reproductive and Developmental Medicine, Sensory Organ Medicine, Neurological Disorder, Advanced Medical Sciences, Immunology*, Pathological Oncology*, Molecular Imaging**, Chronomedicine**, Joint Replacement and Tissue Engineering**, Women's Health Educational System**, Translational Pathology**, Organ Transplantation**, Cancer Preventive Medicine**, Advanced Medicine for Spine and Spinal Cord Disorders**, Ocular Circulation and Metabolism**, Ocular Inflammation and Immunology**

Undergraduate School

Medicine
Introduction to Medicine, History of Medicine, Human Genetics, Anatomy and Embryology, Physiology, Biochemistry, Pharmacology, Pathology, Microbiology, Forensic Medicine and Medical Informatics, Public Health and Hygiene, Internal Medicine Surgery, Developmental Medicine, Psychiatry and Neurology, Sensory Organ Medicine, Reconstructive Surgery and Rehabilitation, Radiology and Nuclear Medicine, Rehabilitation and Physical Medicine, Anesthesiology and Critical Care Medicine
Health Sciences
Nursing, Radiological Technology, Medical Technology, Physical Therapy, Occupational Therapy



Faculties and Graduate Schools

Graduate School of Dental Medicine / School of Dental Medicine

Based on the belief that proper oral care is essential for people to maintain good health, the mission of the Graduate School of Dental Medicine and the School of Dental Medicine is to assist undergraduates and graduates in acquiring professional knowledge and technical skills in dentistry and dental care to help students become dentists and dental educators and scholars with professional ethics, well-rounded characters, and inquisitive minds. The School of Dental Medicine offers distinctive education programs such as small-group educational exercises and early hands-on clinical training to help students become well-educated and intelligent dentists. We also provide research-based training intended to help students improve their problem-solving skills.

Graduate School

Oral Medical Science
Oral Functional Science, Oral Health Science, Oral Pathobiological Science, Stomatognathics,* Geriatric Oral Science***

Undergraduate School

Dentistry Oral Histology and Embryology, Oral Biochemistry, Oral Pathology, Oral Bacteriology, Dental Pharmacology Dental Materials and Engineering, Operative Dentistry, Periodontology and Endodontology, Oral Diagnosis and Oral Medicine, Oral and Maxillofacial Surgery, Dental Radiology, Dental Anesthesiology, Pediatric Dentistry, Orthodontics and Aging Dentistry, Preventive Dentistry



Graduate School of Veterinary Medicine / School of Veterinary Medicine

The mission of the Graduate School of Veterinary Medicine and the School of Veterinary Medicine is to help students become veterinarians with creative minds and well-rounded characters who understand what is expected of veterinary medicine in society and have a scientific and analytic frame of mind. We also aim to cultivate students into veterinary experts who use sophisticated knowledge and technical skills in veterinary medicine to meet social needs in Japan and abroad. We offer small-group education programs so that students can acquire a broad range of professional knowledge and skills to deal with animal diseases.

Graduate School

Veterinary Medicine Biomedical Sciences, Disease Control, Veterinary Clinical Sciences, Environmental Veterinary Sciences, Applied Veterinary Sciences, Zoonosis Control *

Undergraduate School

Veterinary Medicine Basic Veterinary Science, Pathobiological Veterinary Science, Applied Veterinary science, Veterinary Clinical Medicine



Graduate School of Information Science and Technology

The mission of the Graduate School of Information Science and Technology is to contribute to the evolution of a highly sophisticated information society, which leads to the emergence of a knowledge-based society. We support graduate students study a legacy of theories in information science and technology and pursue new theories to become IT engineers with a broad range of knowledge and international perspective. We also aim to nurture IT researchers capable of using their creativity to conduct research and development projects on their own.



Graduate School of Information Science and Technology

Graduate School

Synergetic Information Science
Complex Systems Engineering, Large-scale Information Systems*
Computer Science
Knowledge Software Science, Mathematical Information Science,
Large-scale Discrete Computation
Electronics for Informatics
Integrated Systems Engineering, Advanced Electronics, Quantum
Electronics and Informatics*
Bioengineering and Bioinformatics
Bioinformatics, Biomedical Systems Engineering, Biological
Functions Engineering*, Advanced Medical Engineering***
Media and Network Technologies
Information Media Science and Technology, Information Communication Systems, Ubiquitous Network***,
Media Network Sociology***
Systems Science and Informatics
Informatics for System Creation, Informatics for System Synthesis, Informatics for System Evolution***,
Informatics for System Sensing***



Graduate School of Fisheries Sciences / Faculty of Fisheries Sciences School of Fisheries Sciences

The mission of the Graduate School of Fisheries Sciences, the Faculty of Fisheries Sciences, and the School of Fisheries Sciences is to comprehensively research the sustainable reproduction and efficient use of marine and aquatic resources, which are the shared property of humanity, and to delve into the basic and advanced aspects of preserving the marine ecosystem to ensure the sustainable use of marine resources. We aim to help students develop a creative and positive frame of mind to study issues related to the global environment, natural resources and food, all of which affect the international community, local communities, and business communities. To achieve this objective, we offer curricula in which students can acquire professional knowledge, broad perspectives, and high ethical standards.

Graduate School

Marine Bioresource and Environmental Science
Marine Biology and Biodiversity, Marine Bioresource Science,
Marine Environmental Science, Marine Bioresource and Environmental Sensing, Marine Industrial Science and Technology, Chair of Studies on Marine Bioresources Conservation and Management
Marine Life Science
Aquaculture Biology, Aquaculture Genetics and Genomics, Marine Biotechnology and Microbiology, Marine Bioresources Chemistry, Marine Products and Food Science, chair of Marine Biosafety Science and Technology



Undergraduate School

Marine Biology, Applied Marine Science, Aquaculture Life Science, Marine Bioresources Chemistry
Marine Biology, Applied Marine Science, Aquaculture Life Science, Marine Bioresources Chemistry

Faculty (Research)

Marine Bioresource and Environmental Science
Marine Biology and Biodiversity, Marine Bioresource Science, Marine Environmental Science, Marine Bioresource and Environment Sensing, Marine Industrial Science and Technology, Studies on Marine Bioresources Conservation and Management
Marine Life Science
Aquaculture Biology, Aquaculture Genetics and Genomics, Marine Biotechnology and Microbiology, Marine Bioresources Chemistry, Marine Products and Food Science, Marine Biosafety Science and Technology.

Introduction

Organization

Students

International

Research

Finance

Campus

Graduate School of Environmental Science / Faculty of Environmental Earth Science

The mission of the Graduate School of Environmental Science and the Faculty of Environmental Earth Science is to assist students in studying earth science, biology, and material science, and using what they learn in these fields to research global environmental issues and determine how to resolve them. We also aim to nurture researchers and professionals ready to tackle pressing global environmental issues. We accept students with outstanding scholastic abilities and take an interdisciplinary approach to educating them on environmental science. We offer diverse curricula including general theory, foundation theory, advanced study, school-wide inter-disciplinary courses, and Antarctic science, and play a leading role in environmental education.

Graduate School

Environmental Science Development

Human and Ecological Systems, Environmental Adaptation Science, Practical Science for Environment, Global Environmental Management

Earth System Science

Geochemistry, Cryosphere Science***, Atmosphere-Ocean and Climate Dynamics

Biosphere Science

Ecosystem Biology, Ecological Genetics, Molecular Biology, Plant Ecology, Animal Ecology, Marine Biogeochemistry and Physics, Aquatic Biology, Forest Conservation, Agro-Ecosystem Science

Environmental Materials Science

Biomaterials Chemistry, Environmental Nano-Materials, Molecular Photonics and Electronic Science, Environmental Catalytic Chemistry



Faculty (Research)

Integrated Environmental Science

Conservation on Natural Environments, Environmental Geography, Environmental Adaptation Science, Practical and Earth Sciences for Environment

Earth System Science

Biogeosystem Science, Marine and Atmospheric Geochemistry, Atmosphere-Ocean Physics, Climate Dynamics

Environmental Biology

Terrestrial Ecology, Conservation Ecology, Ecological Genetics, Environmental Molecular Biology

Materials Science

Biomaterials Chemistry, Functional Materials Chemistry, Molecular Materials Chemistry



Graduate School of Science / Faculty of Science / School of Science

Humans have long been fascinated by how nature has evolved, and have always wanted to know how it works. The Graduate School of Science, the Faculty of Science, and the School of Science are dedicated to academic pursuit originating from our desire to learn more about nature. Our mission is to help students develop the following academic attributes:

1. The ability to understand the true nature of an event and identify laws that govern the event (the ability to turn an idea into a universal theory and prove its validity, and the ability to model things and describe the model in a logical and sensible manner).
2. The ability to describe the outcome of academic research in a logical manner, use logic to convince others, and exercise leadership in making a social contribution.

Graduate School

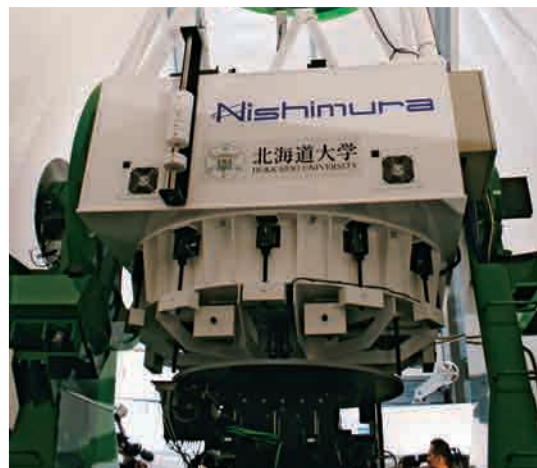
Mathematics, Mathematics
Condensed Matter Physics
Quantum Solid State Physics, Condensed-Matter Physics
Cosmosciences Fundamental Physics, Cosmos and Planets
Natural History Sciences Earth and Planetary Dynamics,
Earth and Planetary System Science, Biodiversity, Science
Communication, Seismology and Volcanology

Undergraduate School

Mathematics, Mathematics, Physics, Physics, Chemistry, Chemistry,
Biological Sciences, Biology, Macromolecular Functions,
Earth and Planetary Sciences, Earth and Planetary Sciences

Faculty (Research)

Mathematics Mathematics
Chemistry Physical Chemistry, Inorganic and Analytical
Chemistry, Organic and Biological Chemistry
Physics Quantum Physics, Electronic Condensed Matter Physics,
Condensed Matter Physics, Nonlinear Physics
Natural History Sciences Cosmo and Planetary Sciences, Earth
and Planetary Dynamics, Earth and Planetary System Science,
Biodiversity
Biological Sciences Biological Sciences



Faculty of Pharmaceutical Sciences / School of Pharmaceutical Sciences and Pharmacy

The mission of the Faculty of Pharmaceutical Sciences and the School of Pharmaceutical Sciences and Pharmacy is to help students become researchers and leading pharmacists capable of discovering groundbreaking medicines and their clinical applications. We offer education and research programs on pharmaceutical sciences—comprising foundations of pharmacy, life sciences, molecular pharmaceutical sciences, and biopharmaceutical sciences.

Faculty (Research)

Molecular Pharmaceutical Sciences Molecular and Cellular
Biological Sciences, Chemistry and Medicinal Chemistry,
Biomolecular Science**
Biopharmaceutical Sciences and Pharmacy
Biopharmaceutical Sciences and Pharmacy Drug Risk Mgmt**

Undergraduate School

Pharmaceutical Sciences, Pharmacy, Pharma. Sciences, Pharmacy



Research Faculty of Agriculture / Graduate School of Agriculture / School of Agriculture

The mission of the Research Faculty of Agriculture, the Graduate School of Agriculture, and the School of Agriculture is to conduct research to create and rebuild a new system of agriculture that deals with wide-ranging food issues that face mankind around the globe. We offer education programs that cover all areas related to resolving pressing issues to ensure sustainable existence of mankind, with a goal of nurturing researchers and talented business professionals capable of making sound judgments from regional and global perspectives.

Graduate School

Bio-systems Sustainability Agricultural and Resource Economics, Safety and Function of Food, Biomass Conversion, Sustainable Agro-science

Agrobiological Applied Molecular Biology, Plant Breeding Science, Botany and Agronomy, Animal Production

Applied Bioscience Food Science, Biomolecular Chemistry
Environmental Resources Ecology and Systematics, Regional Environment, Science of Forest Resources, Integrated Forest-Landscape Management, Bioproduction Engineering

Undergraduate School

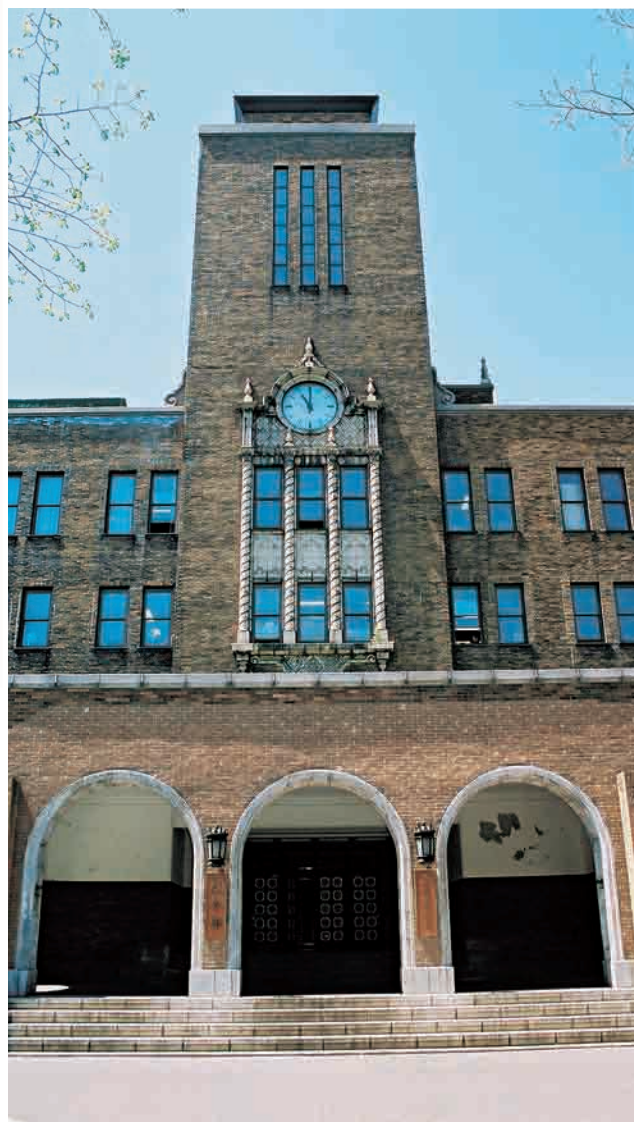
Agrobiological and Bioresources, Applied Bioscience, Bioscience and Chemistry, Forest Science, Animal Science, Agricultural Engineering, Agricultural Economics
Agrobiological and Bioresources, Applied Bioscience, Bioscience and Chemistry, Forest Science, Animal Science, Agricultural Engineering, Agricultural Economics

Research Faculty

Bioresources and Product Science Botany and Agronomy, Horticultural Science and Landscape Architecture, Animal Production, Animal Product Science, Bioproduction Engineering, Agricultural Economics
Environmental Resources Ecology and Systematics, Regional Environment, Forest Resource Science, Forest Management and Conservation

Applied Bioscience Plant Breeding Science, Applied Molecular Biology, Bioorganic Chemistry, Molecular Bioscience, Food Science, Novel Microbial Function**

Innovation in Life, Resources and Environment Sciences Social, Local and Global Integrations



Graduate School of Life Science

Significant progress has been made in both basic and applied research in life science, using genetic information obtained from a variety of animals, including the human genome. The Graduate School of Life Science offers innovative graduate programs intended to help students acquire the knowledge and skills necessary to make meaningful contributions to the continued development of life science in Japan.

Graduate School

Life Sciences Transdisciplinary Life Science,
Biosystems Science, Biomedical and
Pharmaceutical Science
Clinical Pharmacy Clinical Pharmacy



Faculty of Advanced Life Science

Developments in the field of Life Science are very diverse - from basic research to applied research. The Faculty was established as a transdisciplinary institution consisting of professionals from a wide range of research fields. We not only cover areas such as biochemistry within cells or structures and functions of biological molecules, but also conduct research related with observation and analysis of various molecular functions and movements on a real-time basis. Through our education and research programs, the faculty aims to foster the researcher as a new type of scientist who is capable to unite the existing disciplines of biology, chemistry and physics. The Frontier Research Center for Post-genome Science and Technology work with corporations to conduct expansive research projects that brings research results to society.

Faculty (Research)

Advanced Transdisciplinary Science
X-ray Structural Biology, Molecular Life Science,
Soft & Wet Matter Science, Tissue Organization
Science, Cellular Dynamics Science, Drug
Discovery Research, Chemical Biology,
Molecular Delivery Science
(Nitto Denko Co., Ltd)***
Functional Life Sciences Cell Biology Science,
Molecular and Cellular Biology, Biological
Information Analysis Science, Functional Cell
Science, Glyco-signal Biology, Embryonic and
Genetic Engineering



Introduction

Organization

Students

International

Research

Finance

Campus

Faculties and Graduate Schools

Graduate School of Education / Faculty of Education / School of Education

The mission of the Graduate School of Education, the Faculty of Education, and the School of Education is to develop researchers who pursue practical research to establish new education philosophies and systems and resolve wide ranging educational issues; to develop education professionals with highly specialized academic and practical knowledge and skills; and to develop educators with well-rounded characters who can adopt innovative theories to effectively address issues concerning education.

Graduate School

Education Pedagogical Foundations of Education, Life-long Education, Educational Social Sciences, Educational Psychology, Clinical Psychology, Health Education, Physical Education, Multicultural Education,

Undergraduate School

Education Psychology of Education, Social Sciences of Education, Pedagogical Foundations of Education, Science of Health & Physical Education

Faculty (Research)

Education Human Developmental Sciences, Educational and Social Developmental Studies



Graduate School of International Media, Communication, and Tourism Studies / Research Faculty of Media and Communication

The mission of the Graduate School of International Media, Communication, and Tourism Studies and the Research Faculty of Media and Communication is to nurture researchers and business professionals who have the professional expertise in public relations, journalism, media culture, verbal communication, and tourism necessary to effectively address changes and issues in today's society and to become prominent players in the local and international arenas.

Graduate School

International Media and Communication
Public Communication, Journalism, International Public Relations, Media and Culture, Multi-Media Studies, Language and Communication, Language Acquisition, Japanese Linguistics, International PR Strategies***
Tourism Creation Tourism Creation, International Regional Culture Studies, Tourism Regional Management***

Faculty (Research)

Media and Communication Public Communication, Journalism, International Public Relations, Media and Culture, Multi-Media Studies, Language and Communication, Language Acquisition, International Regional Culture Studies, Multicultural Education, International PR Strategies***



Graduate School of Health Sciences / Faculty of Health Sciences

The mission of the Graduate School of Health Sciences and the Faculty of Health Sciences is to develop advanced-medical-care professionals who use leading-edge knowledge and technical skills to meet social needs for advanced medical care and play a prominent role in the next generation of health sciences, and to develop researchers who can play a leading role in the global arena of health-science research beyond their fields of specialty.

Graduate School

Health Sciences Health Sciences, Nursing

Faculty (Research)

Health Sciences Fundamental Nursing, Comprehensive Developmental Nursing, Biomedical Science and Engineering, Medical Laboratory Science, Rehabilitation Science, Functioning and Disability, Health Sciences, Food & Nutrition for Health Promotion Donated by Watanabe Oyster Lab. Co. Ltd & Hokuto Endowed Chair in Prevention of Joint Diseases.



Graduate School of Engineering / Faculty of Engineering / School of Engineering

The mission of the Graduate School of Engineering, the Faculty of Engineering, and the School of Engineering is to transfer our legacy of academic accomplishments to students to help them acquire and refine basic and advanced professional disciplines in engineering. We also aim to help students acquire the wide-ranging knowledge, sound judgment, and practical skills necessary to deal with globalization as well as the advancement of science and technology.

Graduate School

Applied Physics Quantum Matter Physics, Complex Material Physics, Optical Science and Technology, Solid State Physics and Engineering
Materials Science and Engineering Ecological Materials, Materials Design, Energy Materials, Energy Conversion Materials, Ironmaking and Steelmaking**, Frontier Energy Engineering***
Mechanical and Space Engineering Space Systems Engineering, Materials and Fluid Mechanics, Space Exploration Engineering***
Human Mechanical Systems and Design Biomechanics and Robotics, Micromechanical Systems, Biomedical Simulation***
Energy and Environmental Systems Nuclear and Environmental Systems, Applied Energy Systems
Quantum Science and Engineering Applied Quantum Beam Engineering, Plasma Science and Engineering, Nanomaterials Science, Materials Structure Science***, Fusion Science***
Field Engineering for the Environment Hydraulic and Aquatic Environment Engineering, Geotechnical and Material Engineering for Disaster Prevention
Engineering and Policy for Sustainable Environment Engineering for Sustainable Infrastructure System, Policy for Engineering and Environment
Architectural and Structural Design Structural and Urban Safety Design, Human Settlement Design
Human Environmental Systems Planning and Performances for Built Environment, Building Science and Space Planning
Environmental Engineering Water Metabolic System, Environmental Management Systems
Sustainable Resources Engineering Resources Engineering, Geoenvironmental Engineering

Undergraduate School

Applied Science and Engineering Applied Physics and Engineering, Applied Chemistry, Materials Engineering
Electronics and Information Engineering Information Engineering, Computer Science, Electronics for Informatics, Bioengineering and Bioinformatics, Media and Network Technologies, Systems Science and Informatics
Mechanical and Intelligent System Engineering Mechanics and Information, Mechanical Systems
Socio-Environmental Engineering Civil Engineering, Public Policy and Engineering, Architecture, Environmental Engineering, Sustainable Resources Engineering



Graduate School of Engineering / Faculty of Engineering / School of Engineering

Faculty (Research)

Applied Physics Quantum Matter Physics, Complex Material Physics, Optical Science and Technology, Solid State Physics and Engineering
 Chemical Process Engineering Industrial Organic Chemistry, Chemical Engineering
 Biotechnology and Macromolecular Chemistry Biotechnology, Chemistry of Functional Molecules
 Materials Chemistry Functional Materials Chemistry, Inorganic Materials Chemistry
 Materials Science and Engineering Ecological Materials, Materials Design, Energy Materials
 Mechanical and Space Engineering Space Systems Engineering, Materials and Fluid Mechanics
 Human Mechanical Systems and Design Biomechanics and Robotics, Micromechanical Systems
 Energy and Environmental Systems Nuclear and Environmental Systems, Applied Energy Systems
 Quantum Science and Engineering Applied Quantum Beam Engineering, Plasma Science and Engineering
 Field Engineering for the Environment Hydraulic and Aquatic Environment Engineering, Geotechnical and Material Engineering for Disaster Prevention
 Engineering and Policy for Sustainable Environment Engineering for Sustainable Infrastructure System, Policy for Engineering and Environment, River Engineering for Cold Regions **
 Architectural and Structural Design Structural and Urban Safety Design, Human Settlement Design
 Human Environmental Systems Planning and Performances for Built Environment, Building Science and Space Planning
 Environmental Engineering Water Metabolic System, Environmental Management Systems, Biowaste Management Systems **
 Sustainable Resources Engineering Resources Engineering, Geoenvironmental Engineering, Soil Environmental Engineering

Graduate School of Chemical Sciences and Engineering

The mission of the Graduate School of Chemical Sciences and Engineering is to develop chemical engineers and researchers capable of flexibly meeting the needs of society. To achieve this mission, we offer students common education programs on fundamental chemistry, and faculty members of science and engineering departments work together to provide expansive education programs that meet student's career goals (engineers and researchers working in the corporate environment, researchers working in public institutions, and educators in higher education).



Graduate School

Chemical Sciences and Engineering Molecular Chemistry and Engineering, Materials Chemistry and Engineering, Biological Chemistry and Engineering

Graduate School of Public Policy / Faculty of Public Policy

As more people get involved in making and implementing public policies, the Graduate School of Public Policy and the Faculty of Public Policy aim to help students become versatile public-policy experts. To achieve this objective, our prominent faculty members provide small-group education, and the graduate school offers three crossover programs. Students have opportunities to pursue careers serving national and local governments or as public-policy professionals working in corporations, think tanks, and NPOs.

Graduate School

Public Policy Public Management, International Relations, Technology Policy

Faculty (Research)

Public Policy Public Policy



Research Institutes and Centers

Institute of Low Temperature Science

The Institute of Low Temperature Science (ILTS) was founded in 1941 as the first research institute in Japan to promote interdisciplinary studies on various natural phenomena occurring in the cryosphere. The cryosphere is of special importance to the climate and is changing rapidly. It is thus essential that we have the latest and best information available regarding ongoing changes in the cryosphere.

Joint Research Division

Research Divisions

Water and Material Cycles

Ocean and Sea Ice Dynamics,
Atmosphere-Ocean Interaction,
Cloud Science Research,
Atmospheric Chemistry and
Organic Geochemistry,
Land-Atmosphere Interaction,
Meteorology/Hydrology

Frontier Ice and Snow Science

Glacier and Ice Sheet Research,
Phase Transition Dynamics,
Ice and Planetary Science,
Astrophysical Chemistry,
Theoretical Planetary Sciences

Environmental Biology

Cold Region Plant Ecology and
Physiology, Plant Adaptation
Biology, Microbial Ecology,
Biodiversity, Biochemistry
Pan-Okhotsk Research Center



WEBSITE: <http://www.lowtem.hokudai.ac.jp>

Research Institute for Electronic Science

The Research Institute for Electronic Science (RIES) has the main objective of creating new cross-disciplinary research areas through the fusion of various research fields. It aims to create a novel research field, 'Interdisciplinary Nano-Science' through the fusion of photonic, molecular, life and mathematical sciences.



WEBSITE: <http://www.es.hokudai.ac.jp/english>

Photonics and Optical Science

Photo-System Physics, Quantum
Information Photonics,
Coherent X-ray Optics

Material and Molecular Sciences

Molecular Photonics, Smart Molecules,
Nanostructure Physics, Functional Thin
Film Materials

Biology and Life Sciences

Molecular and Cellular Biophysics,
Molecular Device

Mathematical and System Science

Complex Systems Research, Molecule &
Life Nonlinear Sciences, Mathematical
Modeling

Green Nanotechnology Research Center

Green Photonics, Nanostructured
Functional Materials, Nanophotonics,
Functional Nanomolecular Materials

Cooperative Research

Sanken Alliance, Riken Alliance, Social
Cooperation Advisory

Research Support Department

Nikon Imaging Center, Promotion Office
for International Alliance, Promotion
office for Nanotechnology Collaboration

Institute for Genetic Medicine

The Institute for Genetic Medicine was established in April 2000 after the Institute of Immunological Science and the Cancer Institute, School of Medicine merged. Together, we combine ninety years of experience to achieve our mission to elucidate the molecular basis of various illnesses including cancer, immune diseases, infectious diseases, and cardiovascular diseases, and to provide means for diagnosis and therapeutics for those illnesses.



Molecular Pathogenesis

Tumor Virology, Stem Cell Biology, Signaling in Cancer and Immunology, Molecular Immunology

Pathophysiology

Cancer Biology, Molecular Virology, Molecular Oncology, Immunobiology

Disease Control

Disease Model Innovation, Immunoregulation, Molecular Interaction

Endowed Department

Matrix Medicine, ROYCE' Health Bioscience, Probiotics Immunology Laboratory of Animal Experiments

Center for Infection-Associated Cancer

WEBSITE: <http://www.igm.hokudai.ac.jp>

Catalysis Research Center

Catalysis chemistry has been in strong demand in building a sustainable society through timely response to the ever increasing requirements of environmental conservation, resources and energy. Since its founding in 1989, the Catalysis Research Center has been promoting high-level education based on advanced research and continues to be at the forefront of world-wide catalytic research.

Fundamental Research Division

Surface Structure Chemistry, Interfacial Spectrochemistry, Catalytic Reaction Chemistry, Catalytic Materials Chemistry, Molecular Catalysis Chemistry, Catalytic Transformation, Catalytic Assemblies, Theoretical Catalytic Chemistry

Target Oriented Research Assembly

Research Cluster for Sustainable Catalyst, Research Cluster for Development of Non-centrochirality As Novel Asymmetric Reactants Media, Research Cluster of Well-defined Surface Structures for Precise Reaction Control, Research Cluster of Study for Energy Conversion, Research Cluster of Bio-Interface, Research Cluster for Reaction Field Based on Molecular Assembly, Research Cluster for Multifunctional Green Catalysis



WEBSITE: <http://www.cat.hokudai.ac.jp>

Slavic Research Center

Russian Studies
Siberian and Far Eastern Studies
Central Eurasian Studies
East European Studies
Comparative Studies

The Slavic Research Center's history goes back to June 24, 1953, when a team of researchers on Slavic Eurasian studies was set up at Hokkaido University. The SRC's activities and resources are open to society inside and outside Japan, allowing joint research with scholars in related areas and promoting public relations abroad concerning Japanese research activities. The SRC plays a leading role in academic associations and institutions such as the Japan Council of Russian and East European Studies (JCREEs, initiated in 1998) and the Japan Consortium for Area Studies (JCAS, initiated in 2004). The Center has concluded academic agreements with foreign institutes, including the Davis Center for Russian and Eurasian Studies, Harvard University; the Russian and Eurasian Studies Center of St. Antony's College, University of Oxford; and the Institute of East European, Russian and Central Asian Studies of the Chinese Academy of Social Sciences in Beijing.

WEBSITE: <http://src-h.slav.hokudai.ac.jp/index.html>



Information Initiative Center



The Information Initiative Center was established in April 2003 for the promotion of advanced research in the development of ICT (information and communications technology) as well as to help the University to construct and maintain its ICT infrastructures. The Center endeavors to promote educational research utilizing ICT and to support the University in carrying out its curriculum based on these developments. In addition to fundamental support to the University, the Center also plays an important role as a resource center for nationwide ICT collaboration.

Large-scale Computing Systems
Information Networks
Digital Contents
Media Education

WEBSITE: <http://www.iic.hokudai.ac.jp>

Hokkaido University Museum

The Hokkaido University Museum has over four million priceless scientific specimens, original documents, and works of art which the University has been accumulating since its establishment in 1876.

Opening Hours
June - October
9:30 - 16:30
November - May
10:00 - 16:00
Closed Mondays
Free Entry



Introduction

Organization

Students

International

Research

Finance

Campus

Research Centers

Center Name	Function
Central Institute of Isotope Science WEBSITE: http://www.hokudai.ac.jp/radiois/	Provides facilities for educational training and research on radioisotope use, controls its use in the University, and conducts research and development on isotope science.
Research Center for Integrated Quantum Electronics WEBSITE: http://www.rciqe.hokudai.ac.jp/index.html	Consists of four research areas: quantum crystal photonics, quantum intelligent devices, quantum integrated processing, and quantum integrated systems. Promotes cooperative research activities on and off campus.
Field Science Center for Northern Biosphere WEBSITE: http://www.hokudai.ac.jp/fsc/	Conducts comprehensive research on the Northern Biosphere based on Field Science and provides educational and research support.
Meme Media Laboratory WEBSITE: http://www.meme.hokudai.ac.jp/	Promotes R & D of new information media technologies for the distribution and reediting of knowledge resources, and conducts IT research that will form innovative technological seeds for future business and industry.
Research and Education Center for Brain Science WEBSITE: http://www.hokudai.ac.jp/recbs/	Provides graduate students with programs on Brain Science through the study of differentiations in brain functions, cognition, and behavior within critical periods.
Research Center for Zoonosis Control WEBSITE: http://www.hokudai.ac.jp/czc/index-e.html	Establishes effective strategies for prediction, prevention, and control of zoonotic diseases, and conducts global surveillance to identify natural host animals and transmission routes of pathogens.
Hokkaido University Archives WEBSITE: http://www.hokudai.ac.jp/bunsyo/	Collects, classifies, and preserves the historical documents and records of Hokkaido University.
Center for Advanced Tourism Studies WEBSITE: http://www.cats.hokudai.ac.jp/	Conducts advanced research on tourism innovation and collaboration, and also provides facilities for the promotion of trans-disciplinary research on tourism studies.
Center for Language Learning WEBSITE: http://www.imc.hokudai.ac.jp/lang/	Provides students with state-of-the-art facilities for learning foreign languages and cultures.
Center for Ainu and Indigenous Studies WEBSITE: http://www.caais.hokudai.ac.jp/en/	Cooperates with Ainu people to promote interdisciplinary research and education on indigenous peoples and builds a network with the world's similar institutions and indigenous organizations.
Center for Experimental Research in Social Sciences WEBSITE: http://lynx.let.hokudai.ac.jp/cerss/	Advances experimental studies in the social sciences, develops and promotes young social scientists, and expands research activities internationally.



Center Name	Function
<p>Research Institute for Information Law and Policy</p> <p>WEBSITE: http://www.juris.hokudai.ac.jp/riilp/index.html</p>	Develops a theoretical framework for Information Law and Policy focusing on the governing process of policy making in the market, the legislature, the administration, and the judiciary and applies it to various areas where information regulations are called into question, such as intellectual property law.
<p>Research Center for Environmental Nano and Bio Engineering</p> <p>WEBSITE: http://www.eng.hokudai.ac.jp/nanobio/eg/</p>	Conducts advanced research on environmental nano and bio engineering in collaboration with related universities, research institutes and companies at home and abroad, and provides educational programs, international seminars and workshops to foster young researchers.
<p>Research Center for Integrative Mathematics</p> <p>WEBSITE: http://www.math.sci.hokudai.ac.jp/center/en/</p>	Transcends boundaries of different scientific disciplines with mathematics as a common language to solve mathematical problems in other research fields.
<p>Center for Sustainability Science</p> <p>WEBSITE: http://www.census.hokudai.ac.jp/</p>	Develops trans-disciplinary educational programs on sustainability and conducts advanced research on global and regional sustainability.
<p>Center of Education and Research for Topological Science and Technology</p> <p>WEBSITE: http://www.topo.hokudai.ac.jp/en/index.html</p>	Researches and educates on topics related to topological science such as science, technology, medicine, and economics.
<p>Center for Environmental and Health Sciences</p> <p>WEBSITE: http://www.cehs.hokudai.ac.jp/</p>	Provides facilities to carry out large-scale epidemiological projects and basic and applied research on environmental and health sciences, the results of which will be presented nationally and internationally. Promotes closer links between domestic and foreign Centers of Excellence, educates individuals working on diverse environmental problems, and aims to develop research in the field of environmental and health sciences.
<p>Center for Translational Research</p> <p>WEBSITE: http://www.med.hokudai.ac.jp/~htr/index.html</p>	Plays a central role in promoting translational research in life sciences to facilitate the commercialization of results of basic research projects, works closely with six other TR bases and develops support staff for translational research.
<p>Health Care Center</p> <p>WEBSITE: http://www.hokudai.ac.jp/hokekan/index.html</p>	Performs health administration in maintaining and improving student and staff health and provides primary medical care.

One of Japan's leading research libraries with a unique collection of materials particularly focused on the northern region, Hokkaido University's libraries contain approximately 3.8 million volumes. Seeking to optimize our user experience, we are bolstering our capacity as well as improving our electronic collection and provision of resources. With around 1,200 seats, our libraries play a vital role as places of learning.



Collections (data as of March 31, 2012)	Japanese Books	Foreign Books	Total	Journals
Central Library	886,034	737,075	1,623,109	32,089
North Library	233,715	105,128	338,843	1,785
Subtotal	1,119,749	842,203	1,961,952	33,874
Collections by Department				
Creative Research Institute	2	1	3	15
Center for Research and Development in Higher Education	4,316	1,053	5,369	187
Letters	189,934	128,258	318,192	5,173
Law	7,848	2,753	10,601	1,224
Economics and Business Administration	13,699	8,018	21,717	1,537
Medicine	78,042	120,054	198,096	5,911
Dental Medicine	24,913	21,206	46,119	1,275
Veterinary Medicine	10,912	25,807	36,719	1,419
Information Science and Technology	4,186	4,646	8,832	800
Fisheries Sciences	78,488	55,485	133,973	5,085
Environmental Science/Environmental Earth Science	9,975	9,107	19,082	594
Science	42,277	173,513	215,790	4,171
Pharmaceutical Sciences and Pharmacy	6,698	4,808	11,506	288
Agriculture	142,073	107,378	249,451	8,156
Life Science / Advanced Life Science	25	53	78	26
Education	22,753	7,160	29,913	1,162
International Media, Communication, and Tourism Studies Media and Communication	9,723	16,184	25,907	360
Health Sciences	35,525	4,746	40,271	960
Engineering	138,665	131,853	270,518	5,310
Public Policy	6	0	6	1
Institute of Low Temperature Science	11,501	25,072	36,573	1,704
Research Institute for Electronic Science	2,415	5,450	7,865	62
Institute for Genetic Medicine	698	702	1,400	64
Catalysis Research Center	3,206	12,064	15,270	451
Slavic Research Center	3,175	98,904	102,079	1,756
Information Initiative Center	0	0	0	59
Hokkaido University Museum	7,835	2,756	10,591	855
Field Science Center for Northern Biosphere	5,619	1,573	7,192	96
Hokkaido University Archives	902	2	904	0
Center for Ainu and Indigenous Studies	1,781	259	2,040	86
Subtotal	857,192	968,865	1,826,057	48,787
Total	1,976,941	1,811,068	3,788,009	82,661

1* Includes the hospital and Central Institute of Isotope Science

2* Includes the Research Center for Integrated Quantum Electronics

Library Hours

Sections	Monday through Friday	Saturday, Sunday, and Holidays
Open-stack reading rooms	9:00 – 22:00	9:30 – 19:00
Stack rooms	9:00 – 20:00	10:00 – 18:30
Group study rooms	9:00 – 21:30	9:30 – 18:30
Fourth-floor reading room in North Library	9:00 – 21:30	9:30 – 18:30
Multimedia room in North Library	9:00 – 21:30	9:30 – 19:00

Note: Library hours can vary depending on time of year. Please check the website for further information.

Hokkaido University Hospital

Total Beds
936

Established in 1921, Hokkaido University Hospital provides high quality medicine, cultivates competent persons in the medical field, promotes advanced medical technology and seeks to contribute to the health and well being of the community. Below is the in-patient / out-patient list for the 2011 Fiscal Year.

Medical Clinical Division

Clinical Sections	Number of Beds	Number of Patients	
		Out-patients	In-patients
Internal Medicine I	44	27,402	14,936
Internal Medicine II	47	45,641	14,569
Internal Medicine III	44	45,116	16,467
Cardiovascular Medicine	32	17,942	11,833
Hematology	36	11,485	13,946
Medical Oncology	5	2,928	5,320
Surgery I	40	17,029	16,710
Surgery II	28	5,547	11,338
Cardiovascular Surgery	18	4,826	8,829
Orthopedic Surgery	48	32,600	19,468
Urology	32	23,634	12,309
Anesthesiology	2	11,240	118
Plastic Surgery	25	6,846	8,642
Sports Medicine	6	2,920	1,656
Pediatric Surgery	6	2,570	1,386
Emergency Service	6	1,762	5,198
Neurological Medicine	16	18,613	8,200
Ophthalmology	32	38,809	11,314
Otolaryngology	32	19,077	12,946
Dermatology	22	22,372	7,970
Psychiatry & Neurology	72	50,000	22,700
Neurosurgery	32	11,808	13,904
Rehabilitation & Physical Medicine	20	41,352	4,216
Obstetrics	38	10,313	14,519
Gynecology	30	25,196	11,745
Pediatrics	40	17,835	12,354
Radiation Oncology	17	21,021	5,725
Diagnostic and Interventional Radiology	1	45,027	207
Nuclear Medicine	6	6,915	2,074
Intensive Care Unit	10	—	(3,565)*
Neonatal Intensive Care Unit	9	—	(2,444)*
High Qualified Clean Ward	5	—	(1,401)*
General	109	—	(17,758)*
Total	910	587,826	290,599

Dental Clinical Division

Clinical Sections	Number of Beds	Number of Patients	
		Out-patients	In-patients
Division of Comprehensive Conservation Dentistry		56,744	
Division of Oral Rehabilitation		62,156	
Division of Oral and Maxillofacial Disorders	26	41,419	8,192
Center for Advanced Oral Medicine		20,423	
Division for General Dentistry		3,054	
Total	26	183,796	8,192
Grand Total			
	936	771,622	298,791

*Patients admitted under this category are listed under more specific clinical sections and therefore numbers in brackets do not form parts of the overall total number of In-patients.

Number of Students / Degrees Granted

Undergraduate Courses

Faculties	Regular Students	Research Students	Auditors	Total
Letters	657	43	51	757
Education	197	12	22	231
Law	718		12	730
Economics and Business Administration	649	17	9	678
Science	964	4		977
Medicine	1,140			1,140
Dental Medicine	273	2		275
Pharmaceutical Sciences and Pharmacy	321	1	1	323
Engineering	2,212		12	2,224
Agriculture	716		12	728
Veterinary Medicine	210		1	211
Fisheries Sciences	676		14	690
General Education	2,697			2,697
Total	11,430	79	152	11,661

Graduate Courses

Faculties	Regular Students			Research Students	Auditor	Total
	Master's Course	Professional Course	Doctor's Course			
Letters	252		212	6	13	483
Law	53	177	49	8	11	298
Economics and Business Administration	67	44	33	1	3	148
Medicine	43		407	6	4	460
Dental Medicine			164	15		179
Veterinary Medicine			80	8		88
Information Science and Technology	431		174	3	7	615
Fisheries Sciences	242		81	1	4	328
Environmental Science / Environmental Earth Science	300		181	8	0	492
Science	265		152	4	4	425
Pharmaceutical Sciences						1
Agriculture	368		155	10	0	533
Life Science	248		151	0	1	400
Education	97		122	4	5	228
International Media, Communication, and Tourism Studies / Media and Communication	110		75	6	1	192
Health Sciences	68		43	7	2	120
Engineering	726		239	12	1	984
Chemical Sciences and Engineering	303		98		2	397
Public Policy		78			3	81
Total	3,573	299	2,415	99	63	6,450

Institutes and Centers

Institutes / Centers	Research Students, etc.
Institute of Low Temperature Science	1
Research Institute for Electronic Science	1
Catalysis Research Center	1
Slavic Research Center	3
Office of International Affairs	37
The Hokkaido University Museum	2
Field Science Center for Northern Biosphere	3
Center for Advanced Tourism Studies	1
Total	50

Total Number of Students

18,161

Number of Degrees Granted

Degrees	2011	Overall
Bachelor's Degree	2,613	126,518 (since 1880)
Master's Degree	1,557	40,594 (since 1955)
Professional	131	915 (since 2005)
Doctorate	432	21,957 (since 1922)
Total	4,733	189,984

* Data as of May 2012



Offices Serving the Student Body

Admission Center

The Hokkaido University Admission Center plays the go-between role matching students who want to study at Hokkaido University with our faculties and research institutes. The Center is responsible for conducting entrance examinations and overseeing admissions. It is open to everyone who wants to study at Hokkaido University: high school graduates, adults who want to continue their education, university students who want to go on to graduate school, and even junior high and elementary school students who wish to use our educational facilities.

TEL: +81-(0)11-706-7484 FAX: +81(0)11-706-7488 EMAIL: ac-info@academic.hokudai.ac.jp
WEBSITE: www.hokudai.ac.jp/bureau/nyu/index.html

Career Center

This Center provides advisory services tailored to the needs of each student in designing life plans. It also holds recruitment events, offers individual consultations, and can act as a gateway to internships and fruitful business connections.

Office hours: 8:30 ~ 18:00 Except on Saturdays, Sundays, and National Holidays TEL: +81-(0)11-706-3262
EMAIL: ccsup2@academic.hokudai.ac.jp WEBSITE: <http://ccsup.academic.hokudai.ac.jp/cc07/cn25/index.html>

Front Office for Human Resource Education and Development

This office, targeting education and development of young postdoctoral researchers and PhD students, presently consists of S-cubic, HoP-Station, Tenure-Track, and the FResHU office.

S-cubic

The S-cubic office supports PhD students and post doctoral researchers as they design and develop their own career path. The office holds career seminars inviting company directors as guest lecturers for PhD students and post doctoral researchers to issue advice on bridging the gap between the educational and private sectors whilst also providing direct matchings between companies' R&D divisions with students and researchers. The office is also operating a closed web-system for students and researchers to contact companies' R&D divisions and access information for possible employment.

TEL: +81(0)11-706-3275 FAX: +81(0)11-706-3584 EMAIL: s-cubic@synfoster.hokudai.ac.jp
WEBSITE: <http://www.sci.hokudai.ac.jp/s-cubic/>

HoP-Station

The Hokkaido University Pioneer Human Resource Development Station (HoP-Station), helps students to find employment in cooperation with partner universities and businesses. The Front Office was newly established to command, promote, and support a range of personnel development efforts at the university, and assists campus-wide development of projects as well as off-campus dissemination of related information.

TEL: +81(0)11-706-2271 EMAIL: hop-station@synfoster.hokudai.ac.jp
WEBSITE: <http://www.synfoster.hokudai.ac.jp/hop-station/index.html>

Tenure-Track

The Promotion Office for Tenure-Track plays an important role in the Hokkaido University Tenure-Track System in supporting skilled young researchers to become future leaders by advertising posts both domestically and internationally. The office also aims to standardize the Hokudai Tenure-Track System and the Tenure-Track Promotion Program through-out the divisions and the departments of Hokkaido University.

TEL: +81(0)11-706-9181 EMAIL: lstation@cris.hokudai.ac.jp
WEBSITE: <http://www.cris.hokudai.ac.jp/tenure-track/>

FResHU

The Support Office for Female Researchers in Hokkaido University (FResHU) has been established within the framework of Hokkaido University's policy of promoting gender equality. Female undergraduate and graduate students, research and teaching staff alike need a learning and working environment in which their talents can develop to their full potential. For this purpose, FResHU seeks to provide the beneficiaries of the program not only with specific guidance and mentoring, but also with sources of inspiration and role models, and by striving to induce changes in the general attitude towards women in academia.

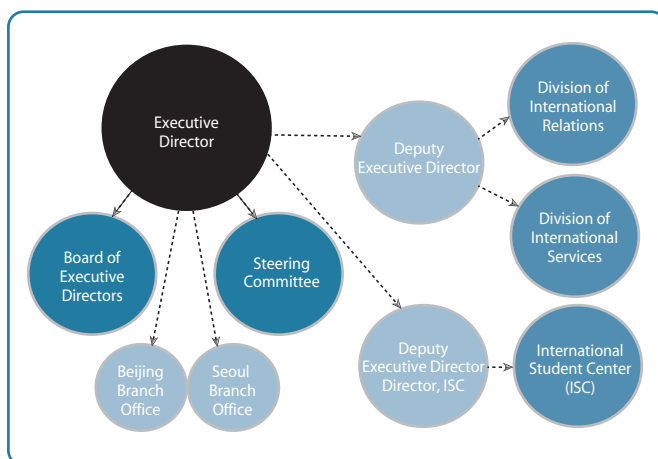
Hokkaido University has committed itself to a 'Triple Twenties Policy': by 2020, 20% of all staff in teaching and research positions should be women. To achieve this goal, the University has devised a "positive action scheme" which incorporates substantial incentives for faculties and departments to select and appoint women. In addition, the University will reach out to young women in high school, guiding and supporting their future study choices, to address the issue of female representation in science at the grass roots level.

TEL: +81(0)11-706-3625 FAX: +81(0)11-706-3692 EMAIL: freshu@synfoster.hokudai.ac.jp
WEBSITE: <http://freshu.ist.hokudai.ac.jp/>

About

In 2010, Hokkaido University launched the Office of International Affairs (OIA) in an organizational restructuring effort designed to further promote internationalization in education and research. The Office of International Affairs is now a 'one-stop shop' to get information and guidance on a wide range of issues that were previously separate in location and authority. The OIA's overall goal is to improve the international mobility of faculty members and students, to secure outstanding students and researchers from abroad, and to encourage mobility amongst Japanese students to overseas institutions.

Office of International Affairs Organizational Structure



To become a "University Open to the World"

To realize the University's goal of becoming a "university open to the world," it is essential to create a system that develops world-class human resources that enhance the international mobility of faculty and students, and also develops a structure by which faculties will be afforded ample opportunities to use their educational and research talents in international activities. The Office of International Affairs serves as a base for the University's various international activities.

Hokkaido University promotes inter-faculty research exchanges and student interaction with partner institutions, and has concluded 291 exchange agreements to date. We have also taken steps to forge closer cooperative relationships with a number of partner institutions in the form of university-wide joint symposiums.

Hokkaido University is proactive in our efforts to accept students from abroad. Our goal is to increase the international student population so that it consists 10% of the overall student body by 2015. In recent years, the number of students from Asia (particularly China, Korea, and Taiwan) has increased significantly, and we plan to continue in our efforts to accept overseas students from these regions as well as world-wide.

Facilities

Student Support Desk	Student Lounge	Language Labs
Student Counseling	Guest Lounge	Conference Facilities
Student Study	Prayer Space	Outdoor Private Patio
Computer Room	Lecture Rooms	

Division of International Relations

TEL: +81(0)11-706-8023 FAX: +81(0)11-706-8036 EMAIL: info@oia.hokudai.ac.jp
office hours: 8:30-17:00

Division of International Services

TEL: +81(0)11-706-8053 FAX: +81(0)11-706-8067 EMAIL: ryugaku@oia.hokudai.ac.jp
office hours: 8:30-18:00

Support Services

Holistic Support

One of the missions of the Office of International Affairs (OIA) is to create a multicultural environment conducive to the personal and professional development for all members of the University community. Consistent with this mission, the OIA strives to provide holistic support to international students, researchers, and faculty. To do this, we work closely with the Academic Affairs Sections of all Faculties and relevant divisions and organizations within and outside the University. The OIA specializes in providing the following services :

Academic and Language Courses

The International Student Center (ISC) offers Japanese language classes to international students over 9 levels (Introductory 1-4, Intermediate 1-2, and Advanced 1-3) covering six types of units (Grammar, Vocabulary/Kanji, Oral Skills, Reading, Written Expression and Listening Comprehension.) Students are free to choose from these according to their needs and class levels are determined on the basis of a placement test as well as on the amount of previous Japanese study.

Psychological Support / Counseling Services

Living abroad can be very stressful. The OIA provides counseling services to international students and scholars. To meet the unique needs of international students, counseling sessions deal with wide ranging issues including psychological, interpersonal and cultural adjustment problems, career and academic concerns and any other difficulties that international students may encounter. Psychiatric consultation is also available at the Health Care Center, which can be provided with translation by the OIA counselor. Additionally, the OIA provides an orientation for international students immediately after their arrival to Japan that covers what to expect in their daily life and information to help them adjust to Japanese society.

Social Activities

The OIA organizes various social and cultural events as an opportunity for international and domestic students to interact with each other. In addition, the OIA maintains solid relationships with various organizations including international student organizations and volunteer organizations that offer a variety of social events and cultural exchange opportunities. Students are encouraged to take advantage of these enriching opportunities. For our international graduates, the OIA maintains an alumni network.

Daily Life

For newly arriving international students, Student Supporters help new students get settled, including opening a bank account, moving into a dormitory, filling in registration forms, and obtaining national health insurance. Also, our staff at the Support Desk answer any questions about day-to-day matters. The OIA publishes handbooks for international students and scholars and regularly imparts useful information concerning academic affairs, events and workshops via e-mail. In addition, the OIA manages several international houses and offers a Guarantor System for international students who choose to rent accommodation privately.

Crisis Response

Given the March 2011 disaster in the Tohoku region, the OIA recognizes the importance of crisis response and disaster preparedness. The OIA offers disaster prevention sessions including a tour to a local Disaster Prevention Center and information to help international students and researchers learn how to protect themselves and their families in case of disaster.

Financial Aid

Hokkaido University offers two scholarships for excellent self-supported international students: the President's Fellowship and the Special Grant Program for International Students. Additionally, the OIA assists international students in applying for scholarships offered by various institutions and organizations. The Seki Michiko Support Fund is available for international students who experience severe economic hardship due to unexpected or unfortunate events such as illness. Short-term loans are also available to international students to cover any unexpected emergencies.

Career Support

For those who plan to obtain employment in Japan after graduating, the ISC offers regular Business Japanese courses. The OIA also maintains a strong working alliance with the Career Center in planning career workshops and providing career-related information for international students.

Programs offered in English/Inbound Exchange Programs

Introduction

Organization

Students

International

Research

Finance

Campus

International Degree Programs in English

English Engineering Education Program (e³)

e³ is a master's and doctoral engineering program where students can choose from almost all engineering fields and also have the option to study outside their primary subject group. More information on this unique program, can be found at: www.eng.hokudai.ac.jp/e3

Graduate Program in Chemistry and Materials Science

This doctoral program, known as the Asian Graduate Schools Program, is conducted by four leading universities across East-Asia. The program includes all major fields in chemistry and materials science and inter-university exchange is encouraged. For more information, please visit the following link: www.eng.hokudai.ac.jp/ags/

Special Postgraduate Program in Bio-systems Sustainability

This is an innovative masters and doctoral program that provides a unique combination of study fields such as food, health, and environment to meet urgent needs in research and development for preservation and sustainable utilization of our limited resources. For more information, visit the following link: <http://www.agr.hokudai.ac.jp/en/gsoa/graduate-admissions.html>

Special Training Program for Veterinary Research

In this doctoral program, students can conduct research with English speaking professors within the fields of Biomedical Science, Disease Control, Veterinary Clinical Science, Environmental Veterinary Science, and Applied Veterinary Science. For more information, use the following link: www.vetmed.hokudai.ac.jp/PGP/cover_page.html

International Graduate Program for Research Pioneers in Life-Sciences

This doctoral program is a life sciences program particularly focusing on new research fields such as biotechnology and nanotechnology. For more information, use the following link: <http://altair.sci.hokudai.ac.jp/grad/igp/>

International Graduate Program in the Natural History Sciences

In this master's and doctoral program students can choose from a wide range of modern earth and planetary sciences including, atmospheric and oceanic science, earth science, and biogeoscience. For more information, use the following link : www.sci.hokudai.ac.jp/grp/i-nhs/home/

Inbound Exchange Programs

HUSTEP (Hokkaido University Short-Term Exchange Program)

HUSTEP is a 'junior year abroad' type program designed to provide students from affiliated universities with the opportunity to study for one academic year in Japan at Hokkaido University. Participants in this program take a wide variety of courses offered in English in the fields of culture and society, environment, and science and technology. In addition, participants can pursue independent research under the guidance of a faculty member. Students also have a chance to study the Japanese language from entry level to business level. For enquiries, visit: www.isc.hokudai.ac.jp or EMAIL: rkouryu@oia.hokudai.ac.jp

JLCS Japanese Language and Culture Studies Program

JLCS is a one year program for students who are Japanese majors in their home university and wish to study the language and culture of Japan intensively at Hokkaido University. Participants take a wide variety of courses in the Japanese language such as Japanese linguistics, and culture and society. Independent study is also available.

For enquiries, into both courses, please visit: www.isc.hokudai.ac.jp or EMAIL: rkouryu@oia.hokudai.ac.jp

Outbound Exchange Programs

Student Exchange Program (with partner universities)

Students of Hokkaido University have 291 study abroad choices with our university-wide or inter-departmental partners. (In the case of inter-departmental agreements, the student must be enrolled in the department or faculty which has the agreement to be able to participate in the program.)

Participants only pay fees to Hokkaido University. There is no need to pay fees to the overseas host institution whilst abroad. In addition, credits earned at the host institution are transferable to Hokkaido University.

Short-term Programs (Summer Programs / Spring Programs)



Just as the name suggests, students can use their summer or spring break to take part in these short-term programs hosted by some of our partner institutions.

In 2011 students went to the following countries and universities:

1. U.S.A. (University of Hawaii at Manoa, Portland State University)
2. Korea (Chonbuk National University, Pukyong National University, Chungnam National University)
3. New Zealand (The University of Auckland)

In this extremely enriching program, students get to learn both language and culture in the country of their choice.

First Step Program (FSP)

The First Step Program contains three major components:

- Student exchange with partner institutions
- Japanese business development overseas
- International cooperation

This program is designed to give Hokkaido University students a chance to visit Japanese organizations such as embassies, and the Japan International Cooperation Agency (JICA), as well as private companies located in foreign countries.

The 'first step' to any global career is to broaden one's horizons. Participants acquire information on overseas internships and gain the necessary knowledge to compete in the global arena through acquisition of language and workplace skills.

Early in 2012, the first contingent visited Singapore and Laos. In mid 2012, another contingent visited Finland.

Outbound Data

Number of countries / regions / universities students can choose from for student exchange

47 countries / regions / 157 universities

2012/2013 Exchange Program Participant Numbers

54

2011/2012 Summer / Spring Program Participant Numbers

93

Overseas Offices

The Hokkaido University Beijing, Seoul, Helsinki, and Lusaka Offices were established to provide more information and services regarding the University and its entrance examinations to potential students. Staff at these offices plan various events, negotiate with universities to establish inter-university partnerships, and support former international students in alumni association activities. These offices also serve as the hub for faculty members of Hokkaido University who visit these cities for research activities.



Beijing Office:

Resource Building Room 806, Zhongguancun Beidajie No.151, Haidian, Beijing 100080 China (in the southeastern corner area of Peking University campus) TEL: +86-10-5887-6455 FAX: +86-10-5887-6456
EMAIL: beijing_office@hokudai.cn WEBSITE: <http://www.hokudai.cn/>
Office Hours: Weekdays 10:00–17:00 (closed on Saturdays, Sundays, Chinese national holidays)



Seoul Office:

703, Handuk Building, 649-4, Yeoksam-Dong, Gangnam-Gu, Seoul, Korea 135-912 TEL: +82-2-501-9400
FAX: +82-2-501-9410 EMAIL: seouloffice@hokudai.kr/ WEBSITE: <http://www.hokudai.kr>
Office Hours: Weekdays 09:00–18:00 (closed on Saturdays, Sundays, Japanese national holidays)



Helsinki Office:

Fabianinkatu 26, 00100 Helsinki, Finland
TEL: +358-44-757-5135 EMAIL: helsinki_office@oia.hokudai.ac.jp WEBSITE: <http://www.hokudai.fi/>
Office Hours: Weekdays 09:00–11:00, 13:00–16.30 (closed on Saturdays, Sundays, and Finnish national holidays)



Lusaka Office:

c/o Department of Disease Control, School of Veterinary Medicine,
University of Zambia (Great East Road Campus), P.O. Box 32379, Lusaka 10101, Zambia
TEL: +260-211-292627 EMAIL: lusaka_office@oia.hokudai.ac.jp
WEBSITE: http://www.hokudai.ac.jp/en/relations/lusaka_office.html
Office Hours: Weekdays 9:00–13:00, 14:00–16:30 (closed on Saturdays, Sundays, and Zambian national holidays)

Tokyo Office

The Hokkaido University Tokyo Office serves as the hub for activities concerning the University. It acts as a base for faculty members that are in the city to use as a temporary office or meeting place and serves as a seminar space for students engaged in finding employment. Alumni also use the office to meet, and prospective students can find information regarding the University and its entrance requirements here.

Location:

Sapia Tower 10 F, Marunouchi 1-chome 7-12, Chiyoda-ku, Tokyo 100-0005 TEL & FAX: +81-3-3211-2055
EMAIL: tokyo@general.hokudai.ac.jp
Office Hours: Weekdays 10:00–18:00

Alumni House, Osaka

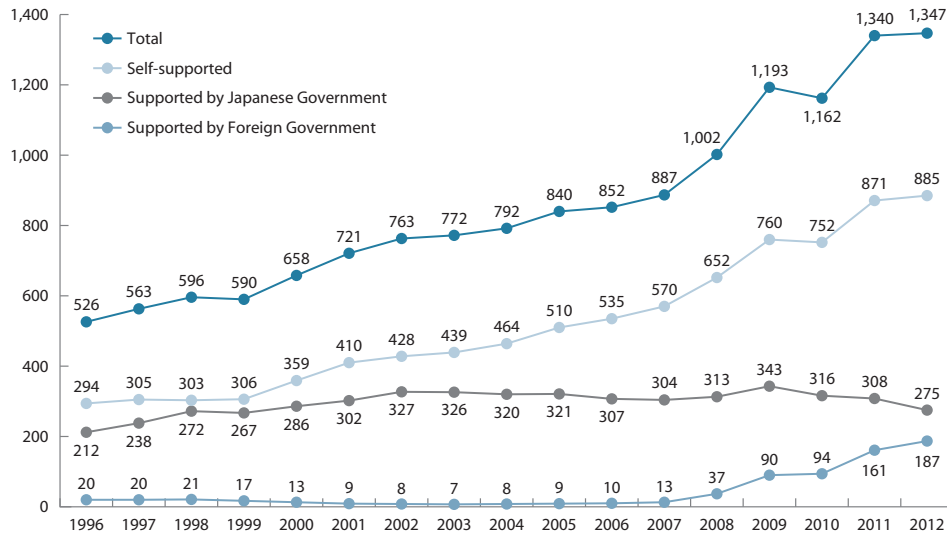
This 50m² multi-purpose facility is used for Alumni groups to gather for meetings and social events. It is also a venue for exhibitions and performances.

Location:

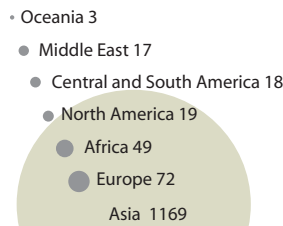
Building 2, 1-Chome 2-Bancho Kita-ku, Umeda Osaka 530-0001 TEL & FAX: +81-6-6343-3736
EMAIL: elmkansai@yahoo.co.jp

International Student Numbers

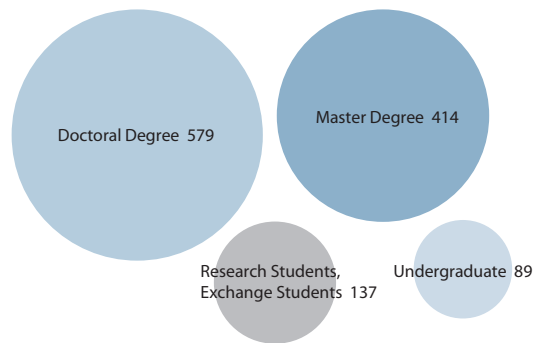
Number of International Students / Method of Financial Support



International Student Origins



Course Enrolment Type



International Students by Department

Faculty/School	U/G	P/G			Research Students	Japanese Language & Culture	Japanese Language Scholars	Special Audit Students	Total
		Masters	Professional Course	Doctorate					
Letters	1	76		48	39			34	198
Law	2	30		30	8			15	85
Economics and Business Administration	4	38		9	15			13	79
Medicine	3	5		22	2				32
Dental Medicine	2			9	1				12
Veterinary Medicine	1			28	1			1	31
Information Science and Technology		42		53	3			6	104
Fisheries Sciences	3	16		25				13	57
Environmental Science / Environmental Earth Science		20		63	5			1	89
Science	3	13		38	1			3	58
Pharmaceutical Sciences and Pharmacy					1				1
Agriculture	3	32		64	4			7	110
Life Science / Advanced Life Science		10		46					56
Education	4	30		13	11			4	62
International Media, Communication, and Tourism		43		16	6			1	66
Studies Media and Communication									
Health Sciences		2			3				5
Engineering	43	46		87	4			12	192
Chemical Sciences and Engineering		11		28				2	41
Public Policy			4					1	5
Department of General Education	20								20
Research Institute for Electronic Science					1			1	2
Catalysis Research Center					1				1
Slavic Research Center					2			1	3
Field Science Center for Northern Biosphere					2				2
Office of International Affairs						27	9		36
Total	89	414	4	579	110	27	9	115	1,347

*Data as of May 1, 2012

International Student Numbers

AREA	COUNTRY	Letters	Law	Economics and Business Administration	Medicine	Dental Medicine	Veterinary Medicine	Information Science and Technology	Fisheries Sciences	Environmental Science / Environmental Earth Science	Science	Pharmaceutical Sciences and Pharmacy	Agriculture	Life Science / Advanced Life Science	Education	International Media, Communication, and Tourism Studies	Media and Communication	Health Sciences	Engineering	Chemical Sciences and Engineering	Public Policy	Department of General Education	Research Institute for Electronic Science	Catalysis Research Center	Slavic Research Center	Field Science Center for Northern Biosphere	Office of International Affairs	TOTAL
Asia	Bangladesh					2		2	2	7	5		1	10					6	1								36
	Brunei									1																		1
	Cambodia																		2									2
	China	135	52	58	15	6	2	69	34	41	23		49	28	55	49		4	80	26	2	10	2	1	1		12	754
	India								1	3	5			8					1	3								21
	Indonesia							2	4	8	8		16	1					13	2								54
	Korea	28	14	5		2	4	7	9	4	6		21	1	3	4	1	1	29	2		9					1	151
	Laos			1																								1
	Malaysia			1	1		1			1			3						17									24
	Mongolia	1	1	1	2					3	1		2	1													1	13
	Myanmar							1					3								1						2	7
	Nepal						2			3									1									6
	Pakistan																		3									3
	Philippines	1							1	4	1		1	1					4	2							2	17
	Singapore									1					1												1	3
	Sri Lanka						1			1									4									6
	Taiwan	3	13	2	1	1		1		1	1		3	2		7					1					1	1	39
	Thailand						6		3	3		1	6						7	2		1						29
	Vietnam							1					1															2
Oceania	Australia							1																				1
	New Zealand															1												1
	Solomon Islands																		1									1
Europe	Azerbaijan																							1				1
	Bosnia Herzegovina										1																	1
	Bulgaria			1				1																				2
	Croatia	1																										1
	Czech Republic	1																										1
	England	1	2					1																			1	5
	Estonia	1																										1
	Finland	1						1							1				1									4
	France	2	1	1				3											1		1				1			10
	Georgia	1																										1
	Germany	1						2																			1	4
	Greece	1																										1
	Hungary	1					1	1																				3
	Italy	1																	1									2
	Ireland	2																										2
	Kazakhstan	2		1							1																	4
	Kyrgyzstan			1																								1
	Poland							1								2			1									4
	Romania			1																								1
	Russia	3	1	1	1			1		1	2					1			1								5	17
	Serbia									1																		1
	Spain																		1									1

AREA	COUNTRY	Letters	Law	Economics and Business Administration	Medicine	Dental Medicine	Veterinary Medicine	Information Science and Technology	Fisheries Sciences	Environmental Science / Environmental Earth Science	Science	Pharmaceutical Sciences and Pharmacy	Agriculture	Life Science / Advanced Life Science	Education	International Media, Communication, and Tourism Studies	Media and Communication	Health Sciences	Engineering	Chemical Sciences and Engineering	Public Policy	Department of General Education	Research Institute for Electronic Science	Catalysis Research Center	Slavic Research Center	Field Science Center for Northern Biosphere	Office of International Affairs	TOTAL
Europe	Sweden										1																	1
	Switzerland	1																										1
	Ukraine	1														1												2
NAm	Canada										1		1															2
	USA	8		2			1	1												2						1	2	17
South America	Bolivia																		1									1
	Brazil					1	1												1							1		4
	Colombia																		1									1
	Costa Rica							1																				1
	Cuba																									1		1
	Guatemala																		1									1
	Guyana									1																		1
	Jamaica				1																							1
	Mexico							1																		1		2
	Panama		1																									1
	Peru								1					1														2
	Trinidad and Tobago				1																							1
Middle East	Venezuela																		1									1
	Iran			1	1								1	1	1				2									7
	Iraq							1											1									2
	Israel														1													1
	Jordan																		2									2
	Lebanon							1																				1
	Syria				1			2																				3
Africa	Turkey	1																										1
	Benin									1																		1
	Central African Republic																		1									1
	Egypt				3		4	1			2								1	1						1		13
	Eritrea			1	3																							4
	Ethiopia						1							1														2
	Ghana									2																1		3
	Guinea																									1		1
	Kenya						1		1											2								4
	Libya				1																							1
	Madagascar									1																		1
	Malawi				1																							1
	Mauritania Islamic Republic																									1		1
	Nigeria						1			1			1	1														4
	Republic of Congo			1																								1
	Senegal																		1									1
	Tanzania								1																			1
	Uganda						1	1											1									3
	Zambia						4						1						1									6
TOTAL		198	85	79	32	12	31	104	57	89	58	1	110	56	62	65	1	5	192	41	5	20	2	1	3	2	36	1,347

Introduction

Organization

Students

International

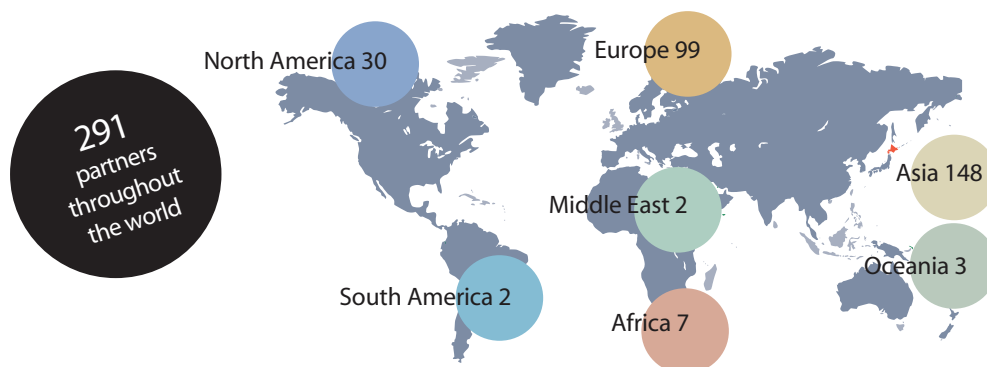
Research

Finance

Campus

International Exchange Agreements

Distribution Map of Counter-part Universities (both University-wide and Department-wide)



Inter-University Exchange Agreements (111 Agreements, 117 Universities in 35 Countries / Regions)

Hokkaido University has concluded agreements for academic and educational exchange and cooperation with universities abroad as follows :

Area	Country	University	Concluded	
Asia	Bangladesh	University of Dhaka	December 24, 2009	*
	China	University of Science and Technology Beijing	December 26, 1986	*
		Zhejiang University	January 20, 2002	*
		Peking University	February 19, 2003	*
		Fudan University	August 3, 2004	*
		Jilin University	September 22, 2004	*
		Nankai University	May 11, 2006	*
		Nanjing University	May 11, 2006	*
		Xi'an Jiaotong University	May 26, 2008	*
		Tsinghua University	June 30, 2008	*
		Northeast Normal University	May 8, 2009	*
		Sichuan University	October 15, 2009	*
		Wuhan University	November 30, 2009	*
		Dalian University of Technology	January 20, 2010	*
		Beijing Normal University	January 20, 2010	*
		Lanzhou University	April 9, 2010	*
		Southeast University	October 29, 2010	*
		Xiamen University	November 25, 2010	*
		Shanghai Ocean University	December 1, 2010	*
		Ocean University of China	February 3, 2011	*
		The Chinese University of Hong Kong	September 9, 2011	*
		Northwest Agriculture and Forestry University	October 13, 2011	*
		Shanghai Jiao Tong University	October 19, 2011	*
	India	University of Delhi	February 26, 2010	*
	Indonesia	University of Palangka Raya	August 26, 2006	*
		Bogor Agricultural University	July 29, 2009	*
		Universitas Gadjah Mada	July 23, 2010	*
	Korea	Seoul National University	October 1, 1997	*
		Chonbuk National University	February 9, 2000	*
		Yeungnam University	August 4, 2000	*
		Pukyong National University	October 25, 2000	*
		Chungnam National University	July 9, 2001	*
		Kangwon National University	June 13, 2003	*
		Chungbuk National University	December 6, 2007	*
		Hankyong National University	February 16, 2009	*
		Dong-eui University	April 23, 2009	*
		Korea Maritime University	June 3, 2010	*
		Korea University	October 15, 2010	*
		Yonsei University	December 6, 2010	*

* the exchange of students is included in the Exchange Agreement

Area	Country	University	Concluded	
Asia	Korea	Kongju National University	August 2, 2011	*
		University of Incheon	April 16, 2012	*
	Malaysia	Universiti Sains Malaysia	June 7, 2010	*
	Mongolia	Mongolian State University of Agriculture	January 26, 2009	*
		National University of Mongolia	December 22, 2011	*
	Nepal	Tribhuvan University	October 24, 2010	*
	Phillipines	De La Salle University	January 11, 2009	*
	Sri Lanka	University of Peradeniya	November 14, 2006	*
	Taiwan	National Taiwan University	March 3, 2005	*
		Academia Sinica	September 11, 2008	*
		National Chung Cheng University	November 4, 2009	*
		TamKang University	November 29, 2010	*
		National Chung Hsing University	March 14, 2012	*
	Thailand	Asian Institute of Technology	November 4, 2008	*
		Mahidol University	November 26, 2008	*
		Kasetsart University	January 6, 2009	*
		Chulalongkorn University	July 3, 2009	*
	Vietnam	Vietnam National University Ho Chi Minh City	February 23, 2010	*
Middle East	Saudi Arabia	King Abdulaziz University	July 8, 2010	*
Oceania	Australia	University of Tasmania	January 9, 2009	*
	New Zealand	The University of Auckland	July 25, 2003	*
Europe	Estonia	University of Tartu	October 28, 2008	*
	Finland	University of Oulu	December 11, 2001	*
		University of Helsinki	March 11, 2011	*
		University of Lapland	June 8, 2011	*
	France	Universite de Strasbourg	October 10, 2010	*
		For the Consortium of Universities of Grenoble :	October 10, 2000	*
		Universite Joseph Fourier, Universite Pierre Mendes France		*
		Universite Stendhal, Institut National Polytechnique de Grenoble		*
		Institut d'Etudes Politiques de Grenoble, Universite de Savoie		*
		Rennes Institute of Political Studies	September 4, 2002	*
		Fondation Nationale des Sciences Politiques	May 18, 2007	*
		Ecole Polytechnique	June 29, 2008	*
		Ecole Supérieure de Physique et de Chimie Industrielles de Paris	March 31, 2009	*
		Universite de la Mediterranee (Aix - Marseille II)	May 18, 2009	*
	Germany	Ludwig-Maximilians-Universitat Munchen	January 31, 1983	*
		University of Bremen	February 11, 2010	*
		Technische Universitat Munchen	July 6, 2010	*
	Hungary	Budapest University of Technology and Economics	November 4, 2004	*
	Italy	Politecnico di Torino	July 1, 2008	*
	Kazakhstan	Al-Farabi Kazakh National University	August 1, 2011	*
	Poland	AGH University of Science and Technology	July 6, 2010	*
	Serbia	The University of Belgrade	May 10, 2011	*
	Sweden	KTH Royal Institute of Technology	January 20, 2010	*
	Switzerland	University of Geneva	June 7, 2005	*
		Swiss Federal Institute of Technology Zurich (ETH Zurich)	June 13, 2007	*
	U.K.	The University of Warwick	January 5, 2000	*
		The University of Sheffield	October 5, 2010	*
		The University of Edinburgh	February 23, 2011	*
	Russia	Lomonosov Moscow State University	October 10, 2001	*
		Sakhalin State University	October 23, 2007	*
		Far Eastern Federal University	November 12, 2007	*
		Far Eastern Branch of the Russian Academy of Sciences	July 23, 2009	*
		Irkutsk State University	March 30, 2010	*
		North-Eastern Federal University	April 2, 2012	*
North America	Canada	University of Alberta	August 13, 1997	*
		The University of British Columbia	June 29, 2008	*
		Dalhousie University	July 30, 2009	*
	U.S.A.	Portland State University	December 19, 1972	*
		University of Massachusetts	September 14, 1976	*
		Cornell University	June 16, 1982	*

Introduction

Organization

Students

International

Research

Finance

Campus

International Exchange Agreements

Area	Country	University	Concluded	
North America	U.S.A.	University of Alaska	December 20, 1986	*
		University of Wisconsin-Madison	April 21, 1987	*
		Ohio State University	September 1, 1998	*
		The University of Texas Health Science Center at Houston	March 10, 2003	
		University of Oregon	August 17, 2006	◎
		University of California, Davis	August 2, 2007	*
		University of California, Los Angeles	June 29, 2008	
		University of Hawaii at Manoa	June 30, 2003	*
		University of Hawaii at Hilo	June 30, 2003	*
		University of Oklahoma	March 25, 2010	*
South America	Brazil	Universidade de Sao Paulo	April 1, 2009	*
Africa	Nigeria	University of Nigeria, Ebonyi State University	January 30, 2009	*
	South Africa	The University of Johannesburg	June 29, 2008	*
	Zambia	University of Zambia	March 18, 2011	*

Memoranda based on Inter-University Agreements (27 Memoranda in 9 Countries)

Country	Counterparts	Exchange Contents	Concluded
China	Institute of Mathematics, Fudan University HU Graduate School of Science	Academic Exchange	January 1, 2004
	Peking University Library HU University Library	Shared Use	April 1, 2005
	University of Science and Technology Beijing HU Graduate School of Engineering	Academic Exchange	November 24, 2005
	Peking University Law School HU Research Institute for Information Law and Policy	Academic Exchange	March 11, 2010
	School of Maths. & Statistics, Northeast Normal University HU Graduate School of Science	Double Degree Program	February 20, 2011
	Institute of Life Sciences, Zhejiang University HU CENSUS Graduate School of Environmental Science	Strass Program, Student Exchange	February 21, 2011
	Dept of Mathematics, Southeast University HU Graduate School of Science	Double Degree Program	March 9, 2011
Korea	College of Commerce and Economics Yuengnam University HU Graduate School of Economics and Business Administration	Academic Exchange	September 27, 2001
	College of Engineering, Chungbuk National University HU Graduate School of Engineering	Academic Exchange	December 6, 2007
	Center for Space-Time Molecular Dynamics, Seoul National University HU Institute of Low Temperature Science	Academic Exchange	June 30, 2009
	College of Business and Economics Yonsei University HU Graduate School of Economics and Business Administration	Joint Seminar	November 22, 2010
	College of Engineering, Seoul National University HU School of Engineering, Graduate School of Engineering Graduate School of Information Science and Technology	Student Exchange, Internship, Double Degree Program	January 17, 2011 July 31, 2011
	Pusan University Faculty of Fisheries, Institute of Fisheries Science HU Graduate School of Fisheries Sciences	Student Exchange	December 26, 2011
Thailand	Asian Institute of Technology HU Graduate School of Engineering	Double Degree Program	March 17, 2011
	School of Environment, Resources and Development, Asian Institute of Technology HU Graduate School of Fisheries Sciences	Joint Education	June 29, 2011
	School of Engineering, Chulalongkorn University HU Graduate School of Engineering, Information Science and Technology and Chemical Engineering Schools	Internship	September 5, 2011
Germany	Faculty of Veterinary Medicine, Ludwig-Maximilians Universitat Muenchen HU Graduate School of Veterinary Medicine	Academic Exchange, Student Exchange	January 10, 2011
Kazakhstan	Graduate School of Science and Technology, National University of Kazakh Rabbi HU Graduate School of Science	Double Degree Program	February 29, 2012
Poland	AGH University of Science and Technology HU Graduate School of Engineering	Double Degree Program	July 6, 2010
	HU Graduate School of Chemical Sciences and Engineering	Double Degree Program	November 22, 2011
Switzerland	The Material Research Center, Swiss Federal Institute of Technology Zurich (ETH Zurich) HU Graduate School of Engineering	Academic Exchange	March 4, 2008
Canada	Fisheries Center, The University of British Columbia HU Graduate School of Fisheries Sciences	Student Exchange	March 1, 2011
U.S.A.	Sch. Fisheries & Ocean Sciences, University Alaska Fairbanks HU School of Fisheries Sciences	Academic Exchange	September 12, 1986
	School of Education, Portland University HU School of Education	Academic Exchange	December 12, 1989
	The Museum of the North, University of Alaska The Hokkaido University Museum	Academic Exchange	November 1, 2005

* the exchange of students is included in the Exchange Agreement

◎ Only Memorandum of Understanding on Student Exchange exists



Departmental International Exchange Agreements (180 Agreements in 36 Countries / Regions)

Countries/Regions		Counterparts		Hokkaido University	Concluded		
Asia	Bangladesh	Jahangirnagar University		Faculty of Mathematical and Physical Sciences	Faculty of Environmental Earth Science	January 26, 2012	
	China	Peking Union Medical College			School of Medicine	July 14, 1994	
		Harbin Medical University	School of Stomatology		Graduate School of Dental Medicine	February 26, 1985	
			No. 4 Clinical Medicine College			June 5, 2000	
			China Medical University			September 21, 2005	
			College of Stomatology			January 29, 2001	
		Shenyang University of Technology		Faculty of Engineering	June 24, 1985		
		Shanghai Jiao Tong University		School of Engineering	Graduate School of Engineering	November 23, 1992	
		Northeast Agricultural College		Faculty of Agriculture	June 2, 1986		
		Shenyang Agricultural University			November 5, 1986		
		Northeast Forestry University			December 31, 1986		
		Jilin University		Law School	Graduate School of Law	November 10, 1998	
		Dalian Fisheries University			Graduate School of Fisheries Sciences, Faculty of Fisheries Sciences and School of Fisheries Sciences	September 15, 2000	
		Chinese Academy of Social Sciences		Inst. of East Eur,Russian and Cen. Asian Studies		Slavic Research Center	September 13, 1994
		Xiamen University State Key Laboratory of Physical Chemistry of Solid Surfaces Dept. of Chemistry		Catalysis Research Center		October 9, 2007	
		China University of Petroleum			School of Chemical Engineering	December 7, 2001	
		East China Normal University			Department of Chemistry	March 18, 2005	
		Chinese Academy of Science, Dalian Institute of Chemical Physics			State Key Laboratory of Catalysis	October 10, 2007	
		Hebei Polytechnic University			Graduate School of Engineering	March 10, 2008	
		The University of Hong Kong		Li Ka Shing Faculty of Medicine		Graduate School of Medicine and School of Medicine	January 30, 2008
		Harbin Engineering University		Engineering Faculty	Graduate School of Engineering, Graduate School of Chemical Sciences and Engineering	August 18, 2008	
		East China University of Science and Tech.		School of Law	Graduate School of Law	July 3, 2008	
		Institute of Journalism and Communication, Chinese Academy of Social Sciences			Graduate School of International Media, Communication, and Tourism	February 19, 2009	
		Zhongnan Univ. of Economics and Law		Law School	Graduate School of Law	March 6, 2009	
		Nanjing Normal University		School of Law	Graduate School of Law	May 15, 2009	
		Harbin Institute of Technology			Graduate School of Engineering	August 11, 2009	
		Huazhong University of Science and Technology		School of Law	Graduate School of Law	October 26, 2009	
		Heilongjiang Provincial Academy of Social Sciences			Slavic Research Center	June 14, 2010	
		Renmin University of China		Law School Intellectual Property Institute		Graduate School of Law, School of Law	October 1, 2010
		Xian University of Architecture and Technology			Graduate School of Engineering	June 12, 2010	
		Southeast University		Department of Mathematics		Graduate School of Science	August 15, 2010
		Northeastern University			Graduate School of Engineering	March 9, 2011	
		Forestry Science Institute of Heilongjiang Province, Harbin			Field Science Center for Northern Biosphere	October 19, 2011	
	India	Bharathidasan University	Department of Animal Science		Graduate School of Veterinary Medicine	August 23, 2010	
	Indonesia	Institute of Technology Bandung	Faculty of Civil Engineering and Planning		Graduate School of Engineering	August 11, 2000	
		Islamic University of Indonesia	Faculty of Civil Engineering and Planning		Faculty of Environmental Earth Science	December 11, 2008	
		University of Palangka Raya		Center for Sustainability Science	November 5, 2009		
		Sriwijaya University	Faculty of Agriculture		Research Faculty of Agr., Faculty of Agr., Graduate School of Agriculture	September 23, 2010	
		Padjadjaran University	Faculty of Technique of Geology		The Hokkaido University Museum	February 24, 2011	
		Indonesian Institute of Sciences	Research Center for Biology			February 25, 2011	
		Korea	Chonnam National University	College of Agriculture		Graduate School of Agriculture	January 24, 2002
	College of Fisheries and Ocean Science			Graduate School of Fisheries Sciences, Faculty of Fisheries Sciences and School of Fisheries Sci.	August 27, 2007		
	Kyungpook National University		College of Veterinary Medicine		Graduate School of Veterinary Medicine and School of Veterinary Medicine	December 19, 2000	
	Cheju National University		College of Ocean Science		Grad. School of Fisheries Sci., Faculty of Fisheries Sci. and School of Fisheries Sci.	December 17, 2002	
	Gyeongsang National University		College of Marine Science			December 15, 2003	
	Kyung Hee University		College of Life Sciences		Field Science Center for Northern Biosphere	February 25, 2004	
	Kunsan National University		College of Ocean Science and Technology		Graduate School of Fisheries Sciences, Faculty of Fisheries Sciences and School of Fisheries Sci.	August 29, 2005	
	Kongju National University		College of Education		Faculty of Education	January 19, 2007	
	Kangnung National University		College of Life Science		Graduate School of Fisheries Sciences, Faculty of Fisheries Sciences and School of Fisheries Sci.	July 1, 2007	
	Korea University		Graduate School of Education		Information Initiative Center	July 23, 2009	
	Seoul Women's University		College of Natural Sciences		Research Faculty of Agr., Faculty of Agr. Graduate School of Agriculture	June 11, 2010	
	University of Seoul		College of Humanities		Graduate School of Letters, Faculty of Letters		
			College of Urban Science			October 29, 2010	
			Graduate School				
	Kyung Hee University		College of Law		Graduate School of Law	March 29, 2011	
	University of Incheon		College of Engineering		Faculty of Engineering, Graduate School of Engineering	May 26, 2011	
	Urban Architecture Department						
	Hansung University		College of Arts		Information Initiative Center	July 29, 2011	
	Hanyang University		The College of Engineering		Faculty of Engineering, Graduate School of Engineering School of Engineering	September 19, 2011	
	National Institute of Biological Resources, Incheon			The Hokkaido University Museum	February 9, 2012		
	Malaysia		University Pertanian Malaysia	Faculty of Fisheries and Marine Science		School of Fisheries Sciences	May 29, 1990
	Mongolia		Institute of Geography of Mongolian Academy of Sciences			Faculty of Environmental Earth Science, and Research Faculty of Agriculture	February 18, 2009
			Institute of Meteorology and Hydrology of National Agency for Meteorological, Hydrological and Environmental Monitoring				February 12, 2009
			National University of Mongolia		Faculty of Biology		February 18, 2009
			Nuclear Research Center		Graduate School of Science		September 21, 2010

* Data as of May, 2012

Introduction

Organization

Students

International

Research

Finance

Campus

International Exchange Agreements

Countries/Regions	Counterparts		Hokkaido University	Concluded	
Asia	Pakistan	University of Karachi	Faculty of Science	Faculty of Environmental Earth Science	September 29, 2008 *
	Philippines	University of the Philippines Diliman	College of Engineering	Graduate School of Information Science and Technology	April 28, 2010 *
	Singapore	National University of Singapore	Faculty of Arts and Social Sciences	Graduate School of Letters	August 8, 2006 *
	Taiwan	National Taiwan University	College of Social Science	Graduate School of Law, School of Law	January 28, 2000 *
			College of Law		October 20, 2000 *
		National Chengchi University	College of Law		
			College of Social Sciences	Graduate School of Law, School of Law, Graduate School of Public Policy and Faculty of Public Policy	July 28, 2005 *
			College of International Affairs		
			Center for Aboriginal Studies	Center for Ainu & Indigenous Studies	October 18, 2007
		National Taiwan Normal University	Institute of Optoelectronics Science and Technology	Research Institute for Electronic Science	January 28, 2008
		National Taiwan Ocean University	College of Life Sciences	Graduate School of Fisheries Sciences, Faculty of Fisheries Sciences and School of Fisheries Sci.	August 20, 2008 *
		National University of Kaohsiung	College of Law	Graduate School of Law	March 11, 2008
		National Cheng Kung University	Sustainable Environment Research Center	Center for Sustainability Science	
			Department of Environmental Engineering	Graduate School of Environmental Science	September 2, 2010 *
			College of Science	Faculty of Science	October 4, 2011
		National Chio Tung University	College of Science	Research Institute for Electronic Science	January 24, 2011
		National Taipei University	Department of Public Administration and Policy	Faculty of Public Policy	September 27, 2011
		Khon Kaen University	Faculty of Humanities and Social Sciences	Graduate School of Letters	November 30, 2004 *
	Thailand	Southeast Asian Fisheries Development Center		Graduate School of Fisheries Sciences, Faculty of Fisheries Sciences and School of Fisheries Sci.	February 18, 2006
		Thammasat University	Sirindhorn International Institute of Technology	Graduate School of Engineering	May 15, 2007 *
		Chulalongkorn University	Faculty of Engineering		July 1, 2007 *
		National Telecommunications Commission		Graduate School of Information Science and Technology	July 1, 2007
		King Mongkut's Institute of Technology Ladkrabang	Faculty of Engineering		December 1, 2007 *
		Rajamangala University of Technology Thanyaburi	Faculty of Science and Technology	Graduate School of Engineering	July 17, 2008 *
		Agricultural Research Development Agency		Research Faculty of Agriculture, Graduate School of Agriculture	March 24, 2009
		Walailak University	School of Agricultural Technology	Graduate School of Fisheries Sciences, Faculty of Fisheries Sciences and School of Fisheries Sciences	December 12, 2009 *
Oceania	Australia	The University of Queensland	Faculty of Health Sciences	Graduate School of Fisheries Sciences and Faculty of Fisheries Sciences	July 1, 2005
Europe	Croatia	University of Zagreb	Faculty of Humanities and Social Sciences	Graduate School of Letters	February 18, 2009 *
	Czech	Charles University in Prague	First Faculty of Medicine	Graduate School of Medicine	September 8, 2008
		The University of South Bohemia	Faculty of Fisheries and Protection of Waters	Graduate School of Fisheries Sciences, Faculty of Fisheries Sciences and School of Fisheries	June 29, 2010 *
	Denmark	The Royal Danish Academy of Fine Arts	School of Architecture	Graduate School of Engineering	March 31, 2010 *
		University of Copenhagen	Niels Bohr Institute	Institute of Low Temperature Science	January 25, 2012
	Finland	Tampere University of Applied Sciences		Graduate School of Engineering, Graduate School of Chemical Engineering	January 12, 2011 *
	France	University of Poitiers	Faculty of Law	School of Law	October 15, 1993
		National Institute of Oriental Languages and Civilizations	Center of Russians and Eurasians Studies	Slavic Research Center	September 25, 1983
		Ecole Pratique des Hautes Etudes		Graduate School of Letters	June 30, 2005
		Ecole Normale Supérieure de Lyon		Research Institute for Electronic Science	March 26, 2010
		The Musée Zoologique De La Ville De Strasbourg		The Hokkaido University Museum	November 20, 2009
		Ecole Nationale Supérieure De Mécanique Et D'aérospatiale		Graduate School of Engineering	January 18, 2011 *
		Unité de Catalyse et de Chimie du Solide, Université Lille 1 et Ecole Centrale de Lille		Catalysis Research Center	January 17, 2011
		College of Advanced Industrial Technology - Bidart Ecole Supérieure des Technologies Industrielles Avancées		Graduate School of Engineering, Information Science and Technology	October 11, 2011 *
	Germany	National Center for Meteorological Research, Toulouse Centre National de Recherches Météorologiques		Institute of Low Temperature Science	March 26, 2012
		Fritz-Haber-Institute of the Max-Planck-Society		Catalysis Research Center	December 26, 2005
		Alfred Wegener Institute for Polar and Marine Research			March 3, 2009
		Max-Planck Institute for Marine Microbiology		Institute of Low Temperature Science	March 4, 2009
		The Senckenberg Forschungsinstitut und Naturmuseum		The Hokkaido University Museum	November 18, 2009
		Otto-Von-Guericke-Universität, Magdeburg	Faculty of Natural Science	Research Institute for Electronic Science	September 13, 2010
	Hungary	Max Planck Institute for Terrestrial Microbiology		Institute of Low Temperature Science	January 19, 2012
		Szent István University	Faculty of Agricultural Economics and Social Sciences Faculty of Agricultural and Environmental Management	Graduate School of Agriculture	February 5, 2003 *
	Netherlands	Leiden University	Institute of East European Law and Russian Studies	Slavic Research Center	January 17, 1994
	Norway	Vrije Universiteit Amsterdam	Faculty of Earth and Life Sciences	Faculty of Environmental Earth Science	December 13, 2010
		University of Tromsø	Center for Sami Studies	Center for Ainu & Indigenous Studies	August 5, 2010
	Poland	Warsaw School of Economics		School of Economics	March 14, 1989
		Technical University of Lodz	Faculty of Textile Engineering	School of Science	March 19, 1992
		Polish Academy of Sciences	Institute of Mathematics	Graduate School of Science	September 26, 2003
			Institute of Catalysis and Surface Chemistry	Catalysis Research Center	March 15, 2010
		West Pomeranian University of Technology	Institute of Chemical and Environmental Engineering		March 17, 2010
		Gdansk University of Technology		Catalysis Research Center	March 18, 2010
	Spain	The Polytechnic University of Valencia		Graduate School of Engineering	January 9, 2006 *
			School of Civil Engineering		*
	Sweden	Göteborg University	School of Business, Economics and Law	Graduate School of Economics and Business Administration	October 28, 1996 *
		Linköping University	Institute of Technology	Graduate School of Engineering	August 24, 2000 *
		Stockholm University	Faculty of Science	Institute of Low Temperature Science	September 20, 2010
	U. K.	The University of Oxford, St. Antony's College		Slavic Research Center	March 12, 2004
		University of Leeds	Faculty of Education, Social Science and Law	Graduate School of Education	December 11, 2006
		The University of Edinburgh	School of Veterinary Studies	Graduate School of Veterinary Medicine	July 24, 2009 *

* the exchange of students is included in the Exchange Agreement



Countries/Regions		Counterparts		Hokkaido University	Concluded			
Europe	U. K.	The University of Manchester		Faculty of Humanities	Graduate School of Letters	December 9, 2009	*	
		Cardiff University		Cardiff Catalysis Institute	Catalysis Research Center	January 26, 2010		
	Kazakhstan	Kazakh National Pedagogical University		Institute of Magistracy & PhD Education		Graduate School of Science	November 19, 2009	
		Moscow State Pedagogical University				School of Education	August 3, 1995	
	Russia	Russian Academy of Sciences - Siberian Branch	Institute of Economics and Industrial Engineering		School of Economics and BusinessAdministration	July 30, 1990		
			United Institute of Geology, Geophysics and Mineralogy			March 10, 1992		
		Novosibirsk State University		School of Science		June 18, 1993		
		Russian Academy of Sciences - Ural Div.		Institute of Metal Physics		Graduate School of Science	September 29, 2000	
		Kazan State Power Engineering University		Institute of Economics and Soc. Tech.			January 28, 2005	
		Russian Academy of Sciences	Institute of Oriental Studies		Slavic Research Center	October 17, 2005		
			Institute of Slavic Studies			June 6, 2006		
		Sakhalin State Regional Museum		The Hokkaido University Museum		August 1, 2000		
		Russian Academy of Sciences - Siberian Branch	V.N. Sukachev Institute of Forestry		Field Science Center for Northern Biosphere	March 12, 2005		
		Institute for Biological Problems of Cryolithozone, Siberian Branch of Russian Academy of Sciences		Faculty of Environmental Earth Science and Research Faculty of Agriculture		December 2, 2008		
		Far Eastern Geological Institute, Far Eastern Branch of Russian Academy of Sciences		Faculty of Environmental Earth Science		November 27, 2008		
		Yakutsk State University				December 3, 2008		
		Institute of the Indigenous Peoples of the North, Siberian Branch of Russian Academy Sciences			February 1, 2010			
		Melnikov Permafrost Institute, Siberian Branch of Russian Academy of Sciences			February 1, 2010			
		State Museum of Khabarovsk			April 1, 2010			
		Nikolaevsk na Amure Municipal Museum			April 1, 2010			
		Arsenyev State Museum of Primorsky Region		The Hokkaido University Museum	April 1, 2010			
		North-Eastern Interdisciplinary Research Center, Far Eastern Branch of Russian Academy of Sciences			August 1, 2010			
		Kamchatka State Technical University			August 20, 2010			
		Tyumen State Oil and Gas University		Faculty of Environmental Earth Science		November 22, 2010		
	Tyumen Science Center, Russian Academy of Sciences							
	Russian Academy of Sciences		Institute of Russian Studies		Slavic Research Center	April 14, 2011		
	Irkutsk State Technical University				The Hokkaido University Museum	June 1, 2011		
	Ukraine	Bogolyubov Institute for Theoretical Physics			Faculty of Science	March 30, 2002		
North America	Canada	McMaster University		Michael G. DeGroote School of Business	Graduate School of Economics and Business Administration	October 15, 2001	*	
		University of Ottawa		Faculty of Medicine	Graduate School of Medicine	November 29, 2004		
		Simon Fraser University			Graduate School of Science	May 10, 2008		
	U.S.A	University of Wisconsin		Law School	School of Law	June 1, 1999		
		Oregon Health and Sciences University		Dental School	School of Dental Medicine	January 1, 1974		
		University of Washington		College of Ocean and Fishery Sciences		June 24, 1988		
		University of Maryland		Center of Marine Biotechnology, Maryland Biotechnology Institute	School of Fisheries Sciences	December 23, 1989		
		University of Illinois at Chicago		The Graduate College	Graduate School of Environmental Earth Science	July 14, 1993		
		Harvard University		Davis Center for Russian and Eurasian Studies	Slavic Research Center	November 4, 1992		
		University of Delaware		Center for Catalytic Science and Technology	Catalysis Research Center	July 9, 2007		
		University of California, Los Angeles		California NanoSystems Institute	Research Institute for Electronic Science	June 10, 2008		
		Iowa State University		Institute for Physical Research and Technology	Catalysis Research Center	March 10, 2009		
		University of Massachusetts Medical School		Graduate School of Biomedical Sciences	Faculty of Advanced Life Science, Graduate School of Life Science	May 10, 2011	*	
		Rice University		George R. Brown School of Engineering	Graduate School of Engineering, Faculty of Engineering, Information Science and Technology, Chemical Engineering	October 19, 2011		
South America	Brazil	The Federal University of Viçosa			Graduate School of Agriculture	May 10, 2001		
Middle East	Turkey	Izmir University			Faculty of Medicine, School of Medicine	October 24, 2011		
Africa	Burkina Faso	International Institute for Water and Environmental Engineering			Graduate School of Engineering	January 26, 2010	*	
	Egypt	Zagazig University		Faculty of Veterinary Medicine	Center for Sustainability Science	March 15, 2010		
					Graduate School of Veterinary Medicine	March 6, 2012		
	Zambia	University of Zambia	Samora Machel School of Veterinary			School of Veterinary Medicine	December 5, 1991	

International Consortia

Name	Number of Members / Countries	Type	Participated
Consortium Japonais du College Doctoral Franco Japonais	Bilaterally 85 Institutions 33 from Japan, 52 from France	Student Exchange	September 13, 2002
International Antarctic Institute	17 Institutions from 12 Countries	Academic, Student Exchange	July 8, 2006
Canada-Japan Strategic Student Exchange Program	Bilaterally 29 Institutions 15 from Japan, 14 from Canada	Student Exchange	December 8, 2006
ProsPER.Net	21 Institutions from 11 Countries / Regions	Academic, Student Exchange	June 21, 2008
France - Japan - Vietnam Network in Singularity Theory	11 Institutions from 3 Countries	Academic, Student Exchange	January 1, 2011
University of the Arctic	138 Institutions from 11 Countries	Academic, Student Exchange	June 8, 2011

*the exchange of students is included in the Exchange Agreement

* Data as of May, 2012

Center for Innovation and Business Promotion

In accordance with University policies regarding university-industry-government collaboration and handling of intellectual property, this Center collaborates with a number of industries and other organizations engaged in joint projects. It aims at not only utilizing the research results obtained at the University for the development of industries, but also relating new knowledge obtained from society to enhance research programs at the University. The Center engages in synergy-oriented research programs with other academic institutions in Hokkaido as well as other versatile regional ventures / projects all designed to promote the creation of regional innovation. The Center comprises (i) the Technology Licensing Office (TLO), (ii) the Office of Intellectual Property, and (iii) the International Strategy Unit.

Technology Licensing Office (TLO)

The Technology Licensing Office (TLO) is HU's general liaison hub for government-industry-academia collaboration and matters concerning intellectual property, and also serves as a one-stop contact point for local industry support. Under the umbrella of the TLO, the Technology Transfer Office promotes mutual collaboration and cooperation with other universities and institutions in Hokkaido and advances joint efforts with universities, TLOs and other organizations outside the prefecture. They also administer technology transfer programs and handle Tangible Research Property (TRP). The duties of the Collaboration Promotion Unit include encouraging the formation of partnerships with government-industry-academia collaboration organizations, supporting local industry and University-launched venture companies, and developing commercialization projects. The Comprehensive Collaboration Unit plans and promotes a wide range of joint initiatives.

Office of Intellectual Property

In its role as a section overseeing centralized control of intellectual property across the university, the Office of Intellectual Property is staffed with experts who examine, maintain, and manage such property on campus. It also works to develop human resources and implements related programs.

International Strategy Unit

The International Strategy Unit was established with funding from the Ministry of Education, Culture, Sports, Science and Technology (MEXT) under the Program for Promoting Self-Sustaining Management of Industry-Academia-Government Collaboration in Universities (FY 2008 - FY 2012). It promotes international industry-academia collaboration activities, specifically supporting technology transfer to overseas businesses and publicity/awareness-raising activities, and works to develop a legal framework to deal with international intellectual property and contracts.

Creative Research Institution (CRIS)

The Creative Research Institution (CRIS) is a University-wide organization dedicated to promotion and support for priority research programs based on HU's strategic research policy. It also strives to create new academic disciplines and advance cutting-edge science and technology based on the development of exceptional human resources who will contribute to the promotion of these aims.

Research Department

The Research Department is dedicated to creating new priority research themes based on HU's strategic research policy, fostering young researchers, and extending support to basic research programs for industry-academia collaboration.

Equipment Management Center

The Equipment Management Center maintains, manages, and operates laboratory equipment and facilities for shared use by HU faculty members, students, and others. It also promotes the use of University laboratory equipment and facilities among faculty members, students, and others as well as non-HU researchers and engineers in science and technology. The Center is also responsible for matters concerning sample analysis.

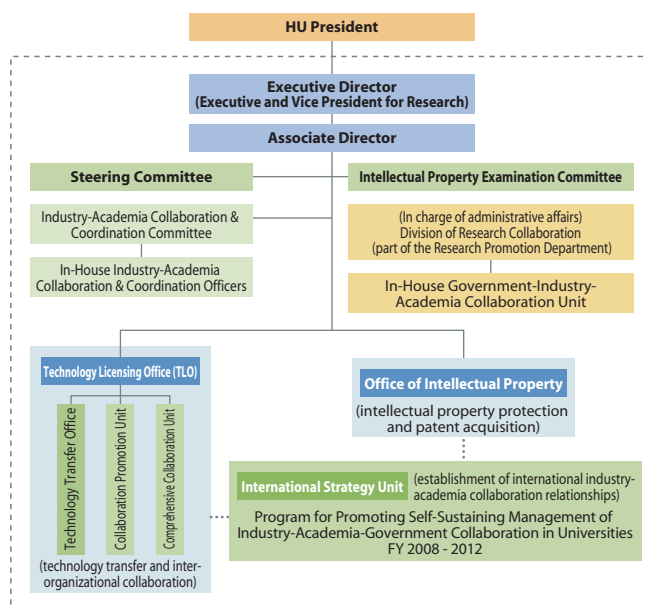
Research Support Office

This campus-wide unit provides support for a range of activities, including research collaboration for the creation of new priority research themes based on HU's strategic research policy, project proposals toward the acquisition of new research funds, and coordination with funding agencies and other collaborating organizations.

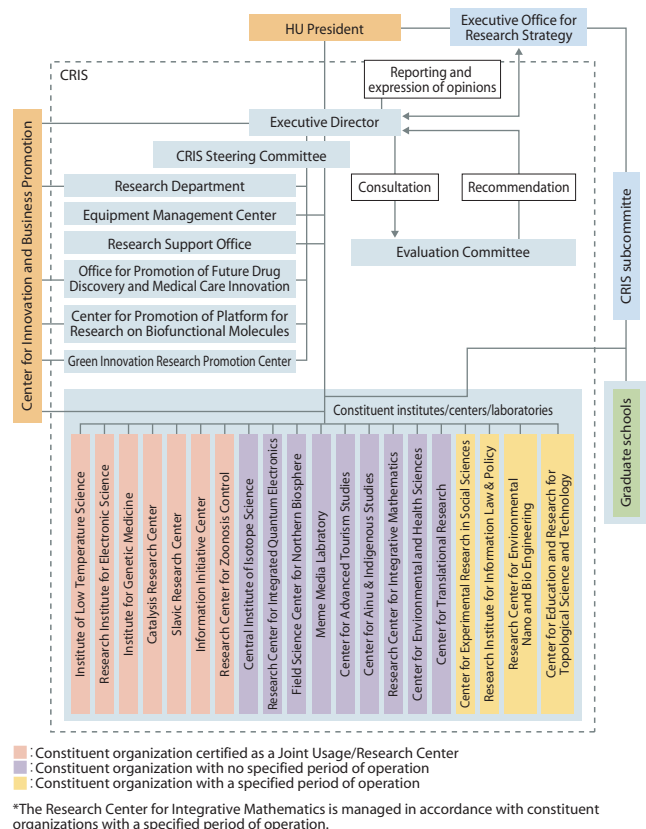
Office for the Promotion of Future Drug Discovery and Medical Care Innovation

This Office supports and promotes activities involving researchers, private businesses, and relevant government ministries and agencies to advance the 'Matching Program for Innovations in Future Drug Discovery and Medical Care' at Hokkaido University.

Organization of the Center for Innovation and Business Promotion



Organization of the Creative Research Institution (CRIS)



Center for Promotion of Platform for Research on Biofunctional Molecules

This Center promotes project-type joint research programs based on government-industry-academia collaboration. It also manages and operates North Campus Integrated Research Building No. 6 - a Platform for Research on Biofunctional Molecules (PRBM) as a hub for drug discovery and functional food development.

Green Innovation Research Promotion Center

This Center promotes research programs to support innovation in the field of environmental energy. It also supports R&D initiatives to advance environmental energy technologies based on government-industry-academia collaboration.

Research Partnerships

University-launched Venture Companies (since 1979) Comprehensive Partnerships

Partners	Concluded
Hitachi, Ltd.	April 1, 2003
Fuji Electric Holdings Co., Ltd.	July 1, 2004
Development Bank of Japan	July 22, 2004
National Institute for Materials Science, Japan	December 7, 2004
National Institute of Advanced Industrial Science and Technology, Japan	February 10, 2005
Dentsu Hokkaido Inc.	February 23, 2005
Japan International Cooperation Agency (JICA)	April 12, 2005
North Pacific Bank	June 24, 2005
Teijin, Ltd.	January 26, 2006
Japan Science and Technology Agency (JST)	October 16, 2008
Japan Aerospace Exploration Agency (JAXA)	October 31, 2008
Nippon Telegraph and Telephone (NTT) Cooperation and NTT East	December 9, 2008
Northern Advancement Center for Science and Technology	June 2, 2009
Hakodate, Tomakomai, Kushiro, and Asahikawa National Colleges of Technology	December 15, 2009
High Energy Accelerator Research Organization	July 1, 2010
Hokkaido Research Organization	March 29, 2011

Regional Cooperation Agreements

Partners	Concluded
Hokkaido Government, City of Sapporo, Hokkaido Economic Federation and Hokkaido Bureau of Economy, Trade and Industry	July 30, 2004

Alliance Agreements Concerning Technology Transfer of Intellectual Property Held by Universities and Other Academic Institutions within the Hokkaido Region

Partners	Concluded
Kitami Institute of Technology	June 4, 2009
Rakuno Gakuen University	June 4, 2009
Muroran Institute of Technology	October 5, 2009
Future University Hakodate	February 1, 2012

Training Courses and Programs Supported by JICA

Fiscal 2011

Course Name	Period	Participants
Program Training		
Management of Urban Water System (Southeast Europe)	1 month	6
Zoonosis Control Measures	1 month	11
Coastal Fishing Techniques for Sustainable Resource Use (B)	Oct. 11, 2011 – Dec. 3, 2011	6
Human Resource Development in the Field of Maternal and Child Health in French-Speaking Africa (B)	Oct. 13, 2011 – Nov. 19, 2011	12
Long Term Training		
ASEAN University Network / Southeast Asia Engineering Education Development Network	1-2 years	5
Research and Training Facility concerning supporting the establishment of Road Facilities	1-2 years	1
Cooperation in Science and Technology	1-2 years	4
Human Resource Development Project for Seismic Engineering and Construction of Buildings, People's Republic of China	1-2 years	1
Long-term Training for Improvement of Tertiary Education	1-2 years	4
Regional Training		
ASEAN University Network / Southeast Asia Engineering Education Development Network	1-6 months	6
Individual Training by Japanese Loan Program		
China Human Resources Development - Individual Training	1-6 months	1

Dispatching Teaching Staff and Experts

Expert Dispatch	up to 1 year	2
Survey Team Dispatch	up to 1 month	23

Introduction

Organization

Students

International

Research

Finance

Campus

Research Activities

Global COE Programs

Funded by the Ministry of Education, Culture, Sports, Science and Technology (MEXT), Japan

Year	Field	Program	Leader
2008 ~ 2012	Medical Sciences	International Collaboration Centers for Zoonosis Control	Graduate School of Veterinary Medicine KIDA Hiroshi
	Social Sciences	New Global Law and Policy for Multi-agential Governance	Graduate School of Law TAMURA Yoshiyuki
	Interdisciplinary, Combined Fields, New Disciplines	Establishment of Center for Integrated Field Environmental Science	Graduate School of Environmental Science YAMANAKA Yasuhiro
2009 ~ 2013	Interdisciplinary, Combined Fields, New Disciplines	Reshaping Japan's Border Studies	Slavic Research Center IWASHITA Akihiro

Funding Program for World-Leading Innovative R&D on Science and Technology

Funded by the Japan Society for the Promotion of Science

Year	Program	Leader
2009 ~ 2013	Sustainable Development of Molecular - Tracking Radiotherapy System	Graduate School of Medicine SHIRATO Hiroki

Joint Usage / Research Center

Recognized by the Ministry of Education, Culture, Sports, Science and Technology (MEXT), Japan

Year	Research Institute	Field	Joint Usage / Research Center
2010 ~ 2015	Institute of Low Temperature Science	Low Temperature Science	Joint Usage / Research Center for Low Temperature Science
	Institute for Genetic Medicine	Basic Medical Sciences	Joint Usage/research Center for Infection-associated Cancers Caused by Sustained Infection with Bacteria and Virus
	Catalysis Research Center	Catalysis, Sustainable Catalytic Engineering	Joint Usage / Research Center for Catalysis
	Slavic Research Center	Area Studies	Center for Slavic Eurasian Area Studies
	Research Center for Zoonosis Control	Zoonosis	Research Center for Zoonosis Control
	Research Institute for Electronic Science	Materials and Devices Science	Network Joint Research Center for Materials and Devices
	Information Initiative Center	Computational Science, Computer Science	Joint Usage / Research Center for Interdisciplinary Large-Scale Information Infrastructures

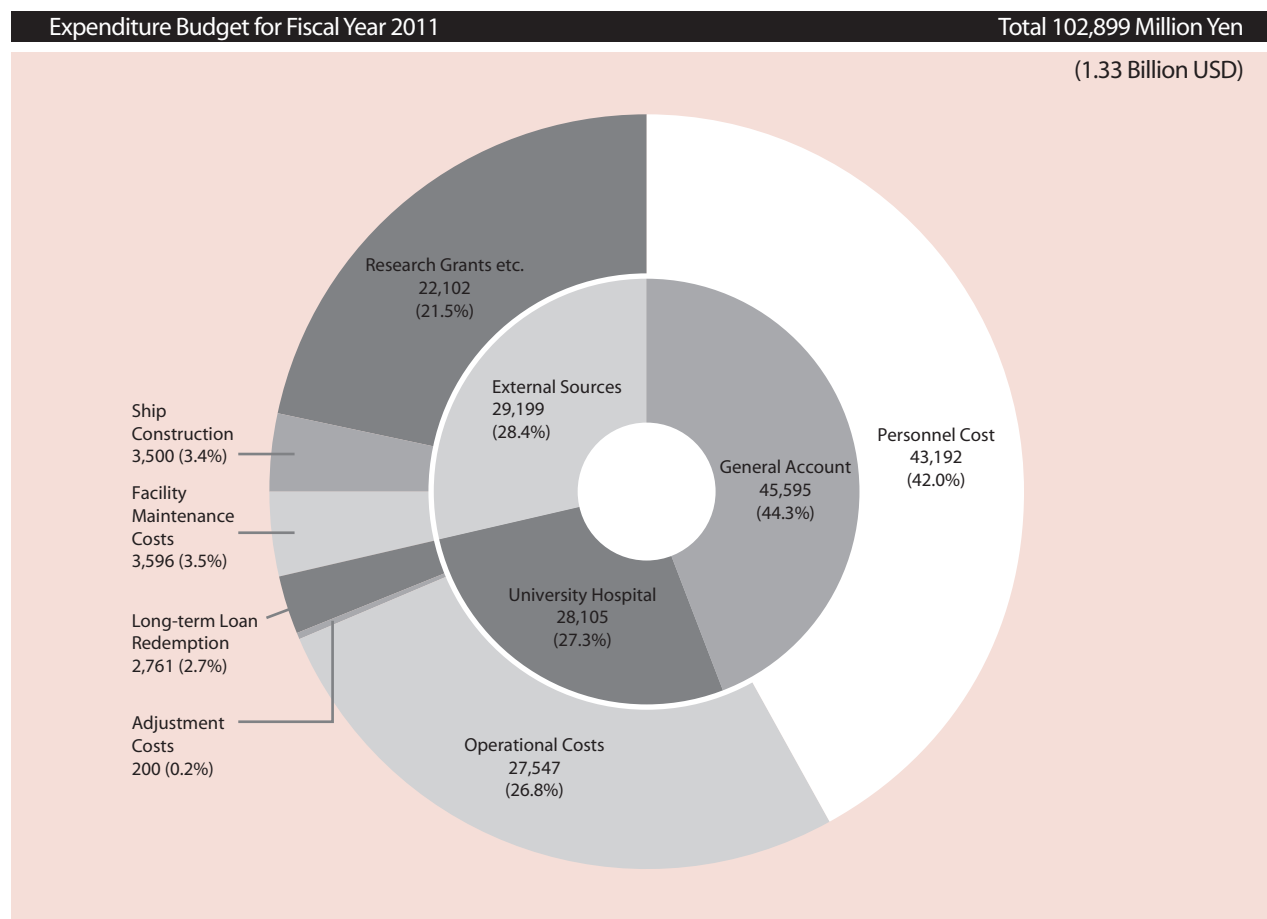
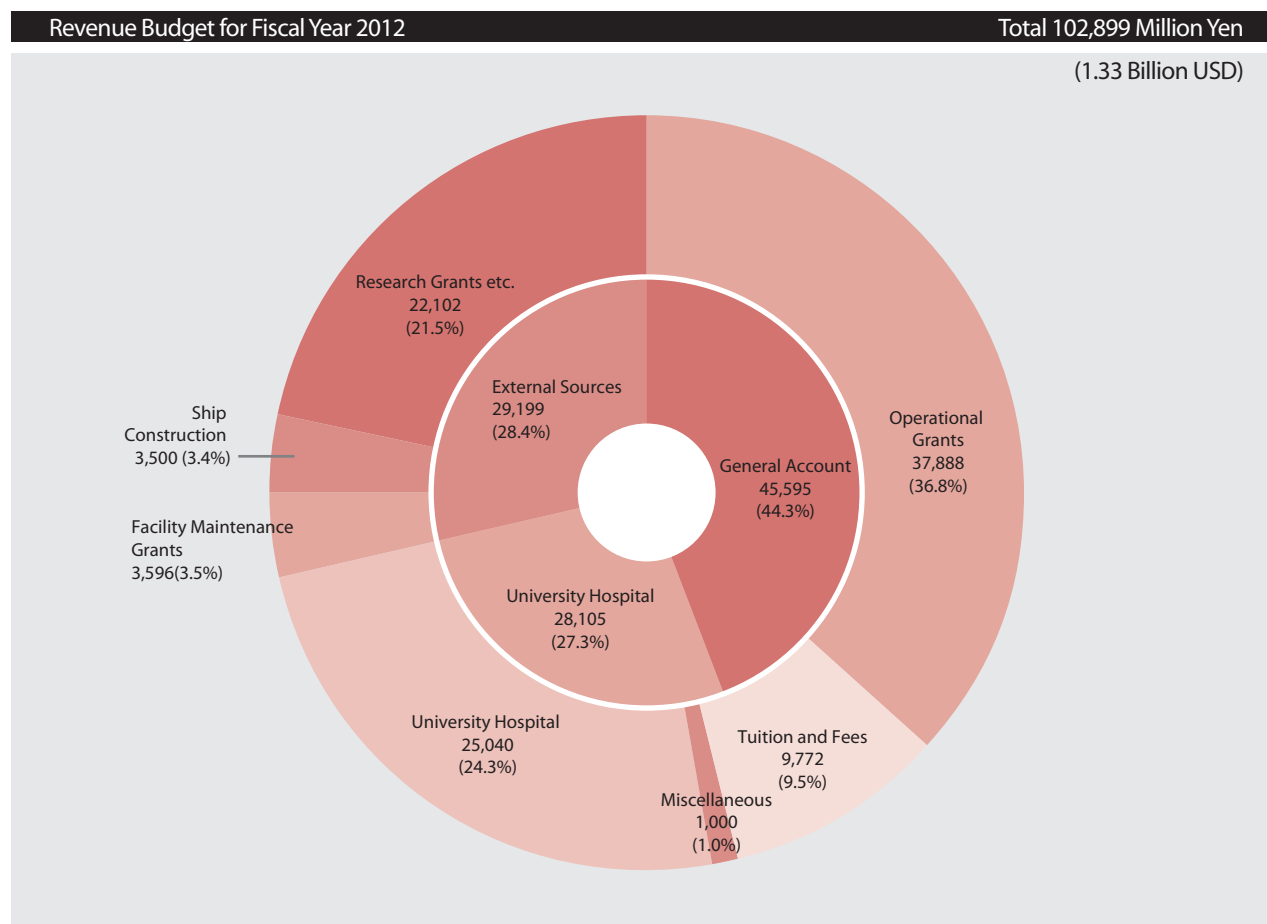
Grants-in-Aid, Joint Research, etc.

Fiscal 2011

Sources	Number of Projects	Amounts (Thousand Yen)
Grant-in-Aid for Scientific Research	1,412	5,517,472
Grant-in-Aid for Scientific Research by the Ministry of the Environment	481	1,047,581
Grant-in-Aid for Scientific Research by the Ministry of Health, Labour and Welfare	20	435,624
Joint Research	514	1,188,843
Commissioned Research	460	4,448,472
Other Grants-in-Aid (Competitive Funds)	50	4,192,150
Research Grants	—	907,542
Endowments for Research	6,007	2,490,367



University Revenue and Expenditure



*The accounting classifications within the inner circles and the item classifications within the outer circles do not necessarily correspond to each other.

Hokkaido University continues to reaffirm its position as an innovative leader in sustainability as we strive to achieve our goal of providing an exceptional learning and research environment that advances global sustainability. We remain committed to fulfilling the Sapporo Sustainability Declaration that recognizes the responsibilities of universities in achieving global sustainability. Currently, we are committed to fulfilling four initiatives over the coming years.

1. Establishing a truly sustainable campus

We aim to combine the results of our cutting edge research with innovative ideas from our students to create a miniature society that is sustainable in every aspect. Via research, we intend to translate the best practices into action on campus.

2. Hosting the 'Sustainability Weeks' event

Hokkaido University's Sustainability Weeks event, to be held for the 7th time in 2013, is an annual program of public seminars and international symposia intended to promote further research and education toward the achievement of a truly sustainable society. This event held in October, covers themes such as climate change, disaster prevention, biodiversity, gender, renewable energy, quality of life, sustainable production and consumption, and sanitation and health.

3. Fostering emerging talent to lead a Sustainable Future

Hokkaido University places special emphasis on fostering global perspectives in our students to advance sustainable practice well into the future. To this end, we initiate the HUIGS program (Hokkaido University Interdepartment Graduate Study in Sustainability) to foster sustainability awareness amongst our student body. The Center for Sustainability Science also initiates the promotion of joint classes connecting Hokkaido University with partner institutions via the internet.

4. Leading Sustainability Networks and Consortia

Collaboration is essential when we tackle problems that defy solutions by single states or regions acting alone. Hokkaido University will continue to exercise leadership to build networks such as ProSPER.net with other organizations within Japan and overseas.

The Office for a Sustainable Campus

The Office for a Sustainable Campus is working hard to achieve zero emissions on campus through the use of natural and renewable energy, and help Hokkaido University play a leading role in achieving a sustainable society.

Divisions and Responsibilities within the Office

- (i) Division of Campus Assessment: Devising a basic plan and an action plan; conducting a sustainability assessment of the campus; and developing participatory programs
- (ii) Division for Reduction of Environmental Impacts: Devising an action plan; implementing measures to conserve energy; and applying soft assets to environmental management of the campus
- (iii) Environmental Preservation Center : Reducing waste generated on the campus

Hokkaido University Measures to Reduce Environmental Impacts

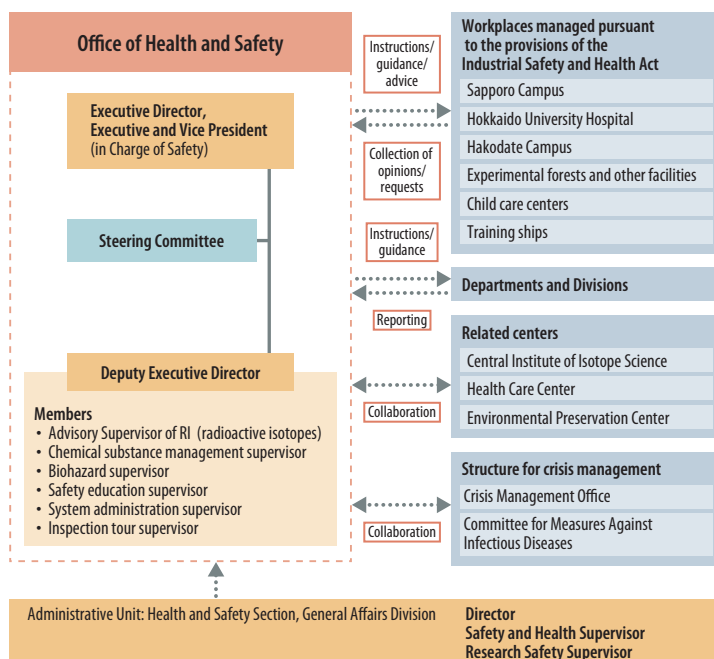
- Conserving Energy
- Promoting 3R practices on campus
- Ensuring environmental laws and regulations are observed
- Broadly communicating sustainability initiatives inside and outside the University
- Managing our forests
- Developing new reduction measures

Office of Health and Safety

HU establishes structures for safety and health management in each workplace (e.g., Sapporo Campus, Hokkaido University Hospital and Hakodate Campus) based on the provisions of the Industrial Safety and Health Act. As the university is a conglomeration of colleges, related safety and health issues encompass a wide range of considerations, including matters arising from diverse research activities, and affect staff as well as students, patients, visitors and others. The Office of Health and Safety, established on March 1st 2011, monitors these issues and plans, devises and supervises safety and health measures from a campus-wide perspective.

Duties and functions

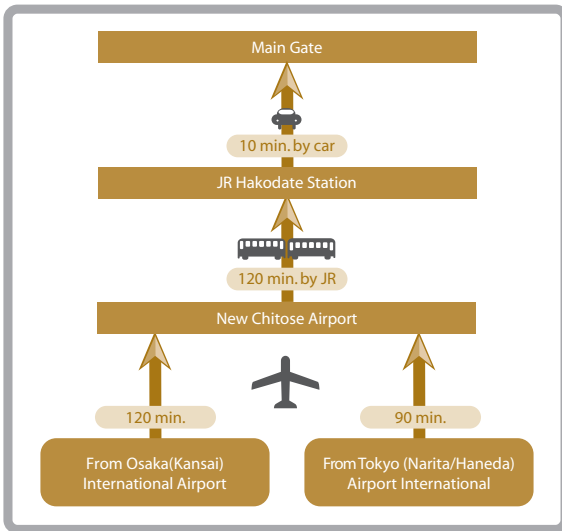
- Identification of safety and health initiatives and challenges
- Planning and design of safety/health measures and similar
- Supervision of matters concerning safety/health and provision of related guidance
- Monitoring of chemical substance management (duties and functions of the Environmental Preservation Center transferred)



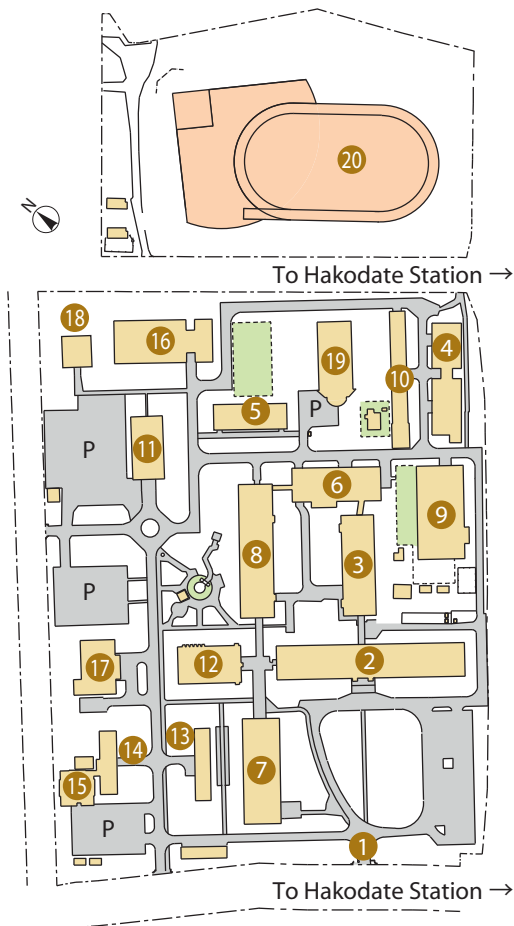
Campus Information Hakodate

Picturesque Hakodate is home to Hokkaido University's Faculty of Fisheries Science and is located on the south-west of the island. With a population of approximately 300,000 people, the coastal city is at the base of Mount Hakodate, which boasts amazing natural beauty. The view from the summit is renowned for having one of the most beautiful views in Japan, particularly at night. Since it opened in 1935, the Hakodate Campus has had a proud history of being at the forefront of fisheries research and is one of the largest campuses of its kind in Japan.

Access to Hakodate Campus



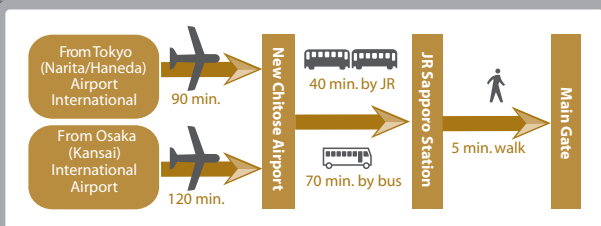
Hakodate Campus Map



Key

- ① Main Gate
- ② Main Building
- ③ Annex Building
- ④ Marine Bioresources Research Building
- ⑤ Marine Frontier Research Building
- ⑥ Marine Science Creative Research Building
- ⑦ Lecture-room Building
- ⑧ Student Laboratories
- ⑨ Controlled Environment Rooms
- ⑩ Towing Tank
- ⑪ Auditorium
- ⑫ Library
- ⑬ Aquatic Biological Specimen House (Nakabe Hall)
- ⑭ Fisheries Museum (main building)
- ⑮ Fisheries Museum (annex)
- ⑯ Gymnasium
- ⑰ Student Center
- ⑱ Student Activities Building
- ⑲ Swimming Pool
- ⑳ Athletic Field

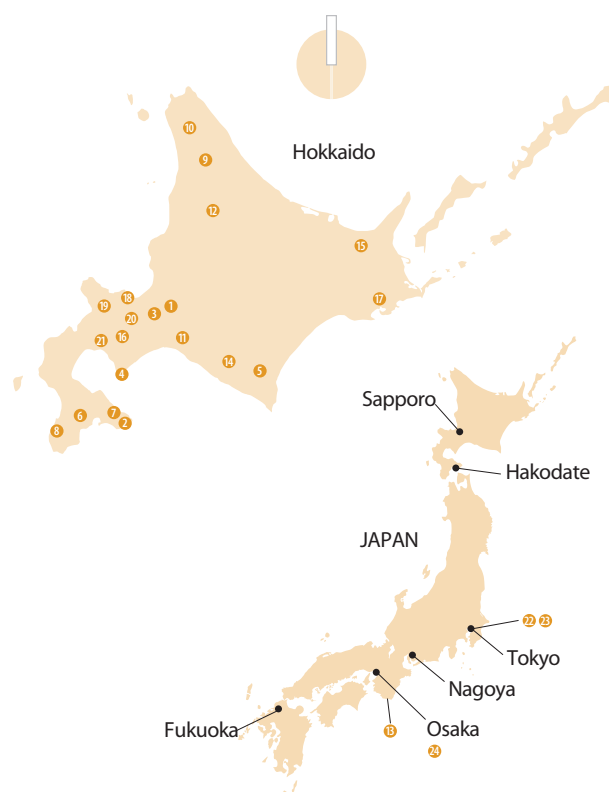
Access to Hakodate Campus



Hokkaido University Off-Campus Facilities

Key

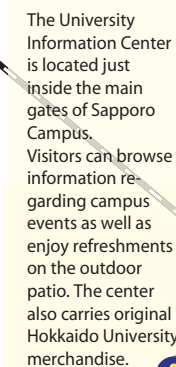
- | | |
|---|--------------------------------------|
| 1 Sapporo Campus | 13 Wakayama Experimental Forest |
| 2 Hakodate Campus | 14 Nibutani House |
| Graduate School of Fisheries Sciences / | 15 Shari House |
| Faculty of Fisheries Sciences / | 16 Toya Lake Station |
| School of Fisheries Sciences / | 17 Akkeshi Marine Station |
| 3 Botanic Garden | 17 Aikappu Museum of Natural History |
| 4 Muroran Marine Station | 18 Oshoro Marine Station |
| 5 Shizunai Livestock Farm | 19 Yoichi Orchard |
| 6 Nanae Fresh-Water Station | 20 Otaki Seminar House |
| 7 Usujiri Fisheries Station | 21 Usu Volcano Observatory |
| 8 Hiyama Experimental Forest | 22 Tokyo Office |
| 9 Nakagawa Experimental Forest | 23 Center for Innovation |
| 10 Teshio Experimental Forest | and Business Promotion |
| 11 Tomakomai Experimental Forest | (Tokyo Branch) |
| 12 Uryu Experimental Forest | 24 Osaka Alumni House |



Hokkaido University Size

Campus	Lands (ha)	Buildings (m ²)
Sapporo Campus	177.6	732,003
Hakodate Campus	10.5	38,943
Forests and Other Areas	65,817.8	68,734
Total	66,005.9	839,680

Campus



Opening Hours
8:30 to 17:00
Daily





Contact Us

Introduction

Organization

Students

International

Research

Finance

Campus

Administrative and Planning TEL +81-(0)11-716-2111

1 ADMINISTRATION BUREAU
General Affairs and Planning Department, Finance Department, Research Promotion Department, Facilities Department
Kita 8, Nishi 5, Kita-ku, Sapporo 060-0808

2 Academic Affairs Department
Student Support Division, Entrance Exam Division (Admission Center)
Kita 17, Nishi 8, Kita-ku, Sapporo 060-0817

3 Front Office for Human Resource Education and Development
Kita 8, Nishi 5, Kita-ku, Sapporo 060-0808

4 Career Center
Kita 8, Nishi 8, Kita-ku, Sapporo 060-0808

5 Center for Innovation and Business Promotion
Kita 21, Nishi 11, Kita-ku, Sapporo 001-0021

6 Division of Fund-Raising Strategy, Research Promotion Department
Kita 21, Nishi 10, Kita-ku, Sapporo 001-0021

7 Creative Research Institution (CRIS)
Kita 21, Nishi 10, Kita-ku, Sapporo 001-0021

8 Office of International Affairs / International Student Center
Kita 15, Nishi 8, Kita-ku, Sapporo 060-0815

9 Institute for the Advancement of Higher Education
Kita 17, Nishi 8, Kita-ku, Sapporo 060-0817

10 Office of Health and Safety
Kita 8, Nishi 5, Kita-ku, Sapporo 060-0808

Office of Internal Auditors
Kita 8, Nishi 5, Kita-ku, Sapporo 060-0808

11 Office for a Sustainable Campus
Kita 8, Nishi 5, Kita-ku, Sapporo 060-0808 TEL +81-(0)11-706-4530

Libraries TEL +81-(0)11-716-2111

12 Central Library
Kita 8, Nishi 5, Kita-ku, Sapporo 060-0808

13 North Library
Kita 17, Nishi 8, Kita-ku, Sapporo 060-0817

Schools and Affiliated Centers TEL +81-(0)11-716-2111

14 Graduate School / Faculty of Letters
Kita 10, Nishi 7, Kita-ku, Sapporo 060-0810

15 Graduate School / School of Law
Kita 9, Nishi 7, Kita-ku, Sapporo 060-0809
Advanced Institute for Law and Politics, Graduate School of Law
Kita 9, Nishi 7, Kita-ku, Sapporo 060-0809

16 Graduate School / School of Economics and Business Administration
Kita 9, Nishi 7, Kita-ku, Sapporo 060-0809

17 Graduate School / School of Medicine, Faculty of Medicine
Kita 15, Nishi 7, Kita-ku, Sapporo 060-8638
Institute for Animal Experimentation, Graduate School of Medicine
Kita 15, Nishi 7, Kita-ku, Sapporo 060-8638

18 Graduate School of Health Sciences / Faculty of Health Sciences / School of Medicine (Department of Health Sciences)
Kita 12, Nishi 5, Kita-ku, Sapporo 060-0812

19 Graduate School / School of Dental Medicine
Kita 13, Nishi 7, Kita-ku, Sapporo 060-8586

20 Graduate School / School of Veterinary Medicine
Kita 18, Nishi 9, Kita-ku, Sapporo 060-0818
Veterinary Teaching Hospital, Graduate School of Veterinary Medicine
Kita 18, Nishi 9, Kita-ku, Sapporo 060-0818

21 Graduate School of Information Science and Technology
Kita 14, Nishi 9, Kita-ku, Sapporo 060-0814

22 Graduate School of Environmental Science / Faculty of Environmental Earth Science
Kita 10, Nishi 5, Kita-ku, Sapporo 060-0810

23 Graduate School / Faculty / School of Science
Kita 10, Nishi 8, Kita-ku, Sapporo 060-0810
Institute of Seismology and Volcanology, Faculty of Science
Kita 10, Nishi 8, Kita-ku, Sapporo 060-0810

Center for Genome Dynamics, Faculty of Science
Kita 10, Nishi 8, Kita-ku, Sapporo 060-0810

Nuclear Reaction Data Centre, Faculty of Science
Kita 10, Nishi 8, Kita-ku, Sapporo 060-0810

24 Faculty of Pharmaceutical Sciences / School of Pharmaceutical Sciences and Pharmacy
Kita 12, Nishi 6, Kita-ku, Sapporo 060-0812

Experimental Station for Medicinal Plant Studies, School of Pharmaceutical Sciences and Pharmacy
Kita 12, Nishi 6, Kita-ku, Sapporo 060-0812

25 Graduate School / Research Faculty / School of Agriculture
Kita 9, Nishi 9, Kita-ku, Sapporo 060-8589

26 Graduate School of Life Science
Kita 10, Nishi 8, Kita-ku, Sapporo 060-0810

Faculty of Advanced Life Science
Kita 10, Nishi 8, Kita-ku, Sapporo 060-0810

Frontier Research Center for Post-Genome Science and Technology, Faculty of Advanced Life Science
Kita 21, Nishi 11, Kita-ku, Sapporo 001-0021

27 Graduate School / Faculty / School of Education
Kita 11, Nishi 7, Kita-ku, Sapporo 060-0811

Research and Clinical Center for Child Development, Faculty of Education
Kita 11, Nishi 7, Kita-ku, Sapporo 060-0811

28 Graduate School of International Media, Communication, and Tourism Studies / Research Faculty of Media and Communication
Kita 17, Nishi 8, Kita-ku, Sapporo 060-0817

29 Graduate School / Faculty / School of Engineering
Kita 13, Nishi 8, Kita-ku, Sapporo 060-8628

Center for Advanced Research of Energy and Materials, Faculty of Engineering
Kita 13, Nishi 8, Kita-ku, Sapporo 060-8628

30 Graduate School of Chemical Sciences and Engineering
Kita 13, Nishi 8, Kita-ku, Sapporo 060-8628

31 Graduate School / Faculty of Public Policy
Kita 9, Nishi 7, Kita-ku, Sapporo 060-0809

Center for Public Policy Studies, Faculty of Public Policy
Kita 9, Nishi 7, Kita-ku, Sapporo 060-0809

Graduate School / Faculty / School of Fisheries Sciences, Hakodate Campus
Minato-cho 3-1-1, Hakodate 041-8611 TEL +81-(0)138-40-5505 (General Affairs)

Research Institutes and Centers, etc. TEL +81-(0)11-716-2111

32 Institute of Low Temperature Science
Kita 19, Nishi 8, Kita-ku, Sapporo 060-0819

Pan-Okhotsk Research Center, Institute of Low Temperature Science
Kita 19, Nishi 8, Kita-ku, Sapporo 060-0819

33 Research Institute for Electronic Science
Kita 20, Nishi 10, Kita-ku, Sapporo 001-0020

34 Green Nanotechnology Research Center, Research Institute for Electronic Science
Kita 21, Nishi 10, Kita-ku, Sapporo 001-0021

35 Institute for Genetic Medicine
Kita 15, Nishi 7, Kita-ku, Sapporo 060-0815

Laboratory of Animal Experiments, Institute for Genetic Medicine
Kita 15, Nishi 7, Kita-ku, Sapporo 060-0815

Research Center for Infection-Associated Cancer, Institute for Genetic Medicine
Kita 15, Nishi 7, Kita-ku, Sapporo 060-0815

36 Catalysis Research Center
Kita 21, Nishi 10, Kita-ku, Sapporo 001-0021

37 Slavic Research Center
Kita 9, Nishi 7, Kita-ku, Sapporo 060-0809

38 Information Initiative Center
Kita 11, Nishi 5, Kita-ku, Sapporo 060-0811

39 Central Institute of Isotope Science
Kita 15, Nishi 7, Kita-ku, Sapporo 060-0815

40 Hokkaido University Museum
Kita 10, Nishi 8, Kita-ku, Sapporo 060-0810



41	Research Center for Integrated Quantum Electronics Kita 13, Nishi 8, Kita-ku, Sapporo 060-8628	
42	Field Science Center for Northern Biosphere Kita 11, Nishi 10, Kita-ku, Sapporo 060-0811	
	Sapporo Experimental Forest, Southern Forestry Research and Development Office, Forest Research Station* Kita 9, Nishi 9, Kita-ku, Sapporo 060-0809	
	Experiment Farm, Agro-Ecosystem Research Station* Kita 11, Nishi 10, Kita-ku, Sapporo 060-0811	
	Botanic Garden, Agro-Ecosystem Research Station* Kita 3, Nishi 8, Chuo-ku, Sapporo 060-0003	TEL +81-(0)11-221-0066
43	Meme Media Laboratory Kita 13, Nishi 8, Kita-ku, Sapporo 060-8628	
44	Research and Education Center for Brain Science Kita 15, Nishi 7, Kita-ku, Sapporo 060-0815	
45	Research Center for Zoonosis Control Kita 20, Nishi 10, Kita-ku, Sapporo 001-0020	
46	Hokkaido University Archives Kita 8, Nishi 5, Kita-ku, Sapporo 060-0808	
47	Center for Advanced Tourism Studies Kita 17, Nishi 8, Kita-ku, Sapporo 060-0817	
48	Center for Language Learning Kita 17, Nishi 8, Kita-ku, Sapporo 060-0817	
49	Center for Ainu & Indigenous Studies Kita 8, Nishi 6, Kita-ku, Sapporo 060-0808	
50	Center for Experimental Research in Social Sciences Kita 10, Nishi 7, Kita-ku, Sapporo 060-0810	
51	Research Institute for Information Law & Policy Kita 9, Nishi 7, Kita-ku, Sapporo 060-0809	
52	Research Center for Environmental Nano and Bio Engineering Kita 13, Nishi 8, Kita-ku, Sapporo 060-8628	
53	Research Center for Integrative Mathematics Kita 12, Nishi 7, Kita-ku, Sapporo 060-0812	
54	Center for Sustainability Science Kita 9, Nishi 8, Kita-ku, Sapporo 060-0809	
55	Center of Education and Research for Topological Science and Technology Kita 13, Nishi 8, Kita-ku, Sapporo 060-8628	
56	Center for Environmental and Health Sciences Kita 12, Nishi 7, Kita-ku, Sapporo 060-0812	
57	Center for Translational Research Kita 15, Nishi 6, Kita-ku, Sapporo 060-8638	
58	Health Care Center Kita 16, Nishi 7, Kita-ku, Sapporo 060-0816	
Accommodation Related		
59	Keiteki Student Dormitory Kita 18, Nishi 13, Kita-ku, Sapporo 060-0818	TEL +81-(0)11-747-7849
	Sosei Student Dormitory Kita 14, Nishi 2, Kita-ku, Sapporo 001-0014	TEL +81-(0)11-758-7934
	Foreign Scholars' Accommodation Kita 24, Nishi 12, Kita-ku, Sapporo 001-0024	TEL +81-(0)11-707-3711
60	Hokkaido University International House Kita 8 Kita 8, Nishi 11, Kita-ku, Sapporo 060-0808	TEL +81-(0)11-736-6211
61	Hokkaido University International House Kita 23 Kita 23, Nishi 13, Kita-ku, Sapporo 001-0023	TEL +81-(0)11-700-3455
	Hokushin Student Dormitory / Oshoro Guest House, Hakodate Nakamichi 1-9-1, Hakodate 041-0853	TEL +81-(0)138-52-1160
Conference and Event Facilities, Seminar Houses		
62	Conference Hall Kita 8, Nishi 5, Kita-ku, Sapporo 060-0808	TEL +81-(0)11-706-2042(Res) / 2141(Office)
63	Faculty House Trillium Kita 11, Nishi 8, Kita-ku, Sapporo 060-0811	TEL +81-(0)11-706-2042(Res) / 2394(Office)
64	Enyuu Gakusha Kita 18, Nishi 7, Kita-ku, Sapporo 001-0018	TEL +81-(0)11-706-7455

65	Centennial Hall Kita 9, Nishi 6, Kita-ku, Sapporo 060-0809	TEL +81-(0)11-706-2042(Res)/ 3211(Office)
	Otaki Seminar House Yutoku-cho 32, Otaki-ku, Date 052-0317	TEL +81-(0)142-68-6155
Off-Campus Research Stations and Facilities		
	Usu Volcano Observatory, Institute of Seismology and Volcanology, Faculty of Science Tatsuka 142, Sobetsu-cho, Usu-gun 052-0106	TEL +81-(0)142-66-4011
	Northern Forestry Research and Development Office, Forest Research Station* Aza Tokuda 250, Nayoro 096-0071	TEL +81-(0)1654-2-4264
	Teshio Experimental Forest, Northern Forestry Research and Development Office, Forest Research Station* Aza Toikanbetsu 131, Horonobe-cho, Teshio-gun 098-2943	TEL +81-(0)1632-6-5211
	Nakagawa Experimental Forest, Northern Forestry Research and Development Office, Forest Research Station* Aza Otoineppu 483, Otoineppu-mura, Nakagawa-gun 098-2501	TEL +81-(0)1656-5-3216
	Uryu Experimental Forest, Northern Forestry Research and Development Office, Forest Research Station* Aza Moshiri, Horokanai-cho, Uryu-gun 074-0741	TEL +81-(0)165-38-2125
	Tomakomai Experimental Forest, Southern Forestry Research and Development Office, Forest Research Station* Aza Takaoka, Tomakomai 053-0035	TEL +81-(0)144-33-2171
	Hiyama Experimental Forest, Southern Forestry Research and Development Office, Forest Research Station* Odome 172-1, Kaminokuni-cho, Hiyama-gun 049-0611	TEL +81-(0)139-55-2048
	Wakayama Experimental Forest, Southern Forestry Research and Development Office, Forest Research Station* Hirai 559, Kozagawa-cho, Higashimuro-gun, Wakayama Prefecture 649-4563	TEL +81-(0)735-77-0321
	Yoichi Orchard, Experiment Farm, Agro-Ecosystem Research Station* Yamada-cho, Yoichi-cho, Yoichi-gun 046-0012	TEL +81-(0)135-22-3287
	Shizunai Livestock Farm, Agro-Ecosystem Research Station* Shizunai Misono 111, Shinhidaka-cho, Hidaka-gun 056-0141	TEL +81-(0)146-46-2021
	Akkeshi Marine Station, Aquatic Research Station* Aikappu 1, Akkeshi-cho, Akkeshi-gun 088-1113	TEL +81-(0)153-52-2056
	Muroran Marine Station, Aquatic Research Station* Funami-cho 1-chome 133-31, Muroran 051-0013	TEL +81-(0)143-22-2846
	Toya Lake Station, Aquatic Research Station* Tsukiura 122, Toyako-cho, Abuta-gun 049-5723	TEL +81-(0)142-75-2651
	Usujiri Fisheries Station, Aquatic Research Station* Usujiri-cho 152, Hakodate 041-1613	TEL +81-(0)138-25-3237
	Nanae Fresh-Water Station, Aquatic Research Station* Sakura-cho 2-chome 9-1, Nanae-cho, Kameda-gun 041-1105	TEL +81-(0)138-65-2344
	Oshoro Marine Station, Aquatic Research Station* Oshoro 1-460, Otaru 048-2561	TEL +81-(0)134-64-2303
Other		
66	Information Center Kita 8, Nishi 5, Kita-ku, Sapporo 060-0808	TEL +81-(0)11-706-4680
67	Clark Memorial Student Center Kita 8, Nishi 8, Kita-ku, Sapporo 060-0808	TEL +81-(0)11-706-2989
68	Student Center for Extracurricular Activities Kita 17, Nishi 12, Kita-ku, Sapporo 060-0817	TEL +81-(0)11-747-3136
	'Tomoni' Child Care Center Kita 7, Nishi 9, Kita-ku, Sapporo 060-0807	TEL +81-(0)11-706-2151
	'Kodomo No Sono' Child Care Center Kita 11, Nishi 5, Kita-ku, Sapporo 060-0811	TEL +81-(0)11-706-4588
69	Multimedia Education Building Kita 17, Nishi 8, Kita-ku, Sapporo 060-0817	TEL +81-(0)11-706-7500
70	Hokkaido University Hospital Kita 14, Nishi 5, Kita-ku, Sapporo 060-8648	TEL +81-(0)11-716-1161
	Hokkaido University Hospital Family House Kita 16, Nishi 6, Kita-ku, Sapporo 001-0016	TEL +81-(0)11-706-7088



HOKKAIDO
UNIVERSITY

Division of International Relations

Kita 15, Nishi 8, Kita-ku, Sapporo, 060-0815

TEL: +81-(0)11-706-8023

FAX: +81-(0)11-706-8036

EMAIL: info@oia.hokudai.ac.jp

Division of International Services

Kita 15, Nishi 8, Kita-ku, Sapporo, 060-0815

TEL: +81(0)-11-706-8053

FAX: +81(0)-11-706-8067

EMAIL: ryugaku@oia.hokudai.ac.jp