



HOKKAIDO
UNIVERSITY

... in detail

2013-2014 Data Book

History	01
Organizational Structure	04
Number of Staff	06
Number of Students / Degrees Granted	08
International Student Numbers	09
International Academic Exchange	11
Inter-University Exchange Agreements	11
Memoranda Based on Inter-University Agreements	14
Departmental Exchange Agreements	15
Japanese Language Classes	20
Hokkaido University Hospital	21
Hokkaido University Library	22
Hokkaido University Museum	23
Campus Maps	24
Contact Information	25



HOKKAIDO
UNIVERSITY

History

Sapporo Agricultural College (1876–1907)

1876	7	Dr. William S. Clark, then president of the Massachusetts Agricultural College in the United States invited to be vice president of Sapporo Agricultural College. He arrives in Sapporo with two American professors, W. Wheeler and D. Penhallow, and 11 American students.
	8.14	Sapporo Agricultural College inaugurated. (Hokkaido University celebrates its anniversary of foundation on August 14.)
	9	Hirotake Chosho named president of Sapporo Agricultural College.
	12	Book-Stack Room (later College Library) opens.
1878	10	The martial arts training facility (current Sapporo Clock Tower) constructed.
1881	2	Genzo Mori, then Hokkaido development commissioner, acts also as college president.
1886	7	Botanical Garden constructed.
	12	Hideaki Sato named administrative officer of Hokkaido prefectural government and acting college president.
1887	3	Shosuke Sato named acting president.
1888	12	Bunzo Hashiguchi named president.
1891	8	Shosuke Sato named assistant president.
1894	4	Shosuke Sato named president.

Tohoku Imperial University (1907–1918)

1907	6	Sapporo Agricultural College becomes the Agricultural College of Tohoku Imperial University and adds preparatory courses. (It is inaugurated in September 1907.) Book-Stack Room renamed College Library.
	9	Shosuke Sato named dean of the College of Tohoku Imperial University.

Hokkaido Imperial University (1918–1947)

1918	4	Agricultural College of Tohoku Imperial University transferred to the newly established Hokkaido Imperial University, becoming the Agricultural College of Hokkaido Imperial University. Shosuke Sato named president of Hokkaido Imperial University and dean of its Agricultural College.
1919	2	Agricultural College of Hokkaido Imperial University renamed the School of Agriculture in Hokkaido Imperial University. The School of Medicine established.
	4	Shosuke Sato named president of Hokkaido Imperial University.
1921	4	The Medical Clinic attached to the School of Medicine established (becomes operational in November 1921).
1922	5	College Library renamed Hokkaido University Library.
1924	9	The School of Engineering established.
1930	4	The School of Science established.
	12	Takajiro Minami named president.
1933	12	Kumao Takaoka named president.
1937	12	Yutaka Kon named president.
1941	11	The Institute of Low Temperature Science established.
1943	1	The Institute of Catalysis Research established. The Institute of VHF Research established.
1945	6	The Administrative Office and the Student Affairs Office established.
	11	Seiya Ito named president.
1946	3	The Institute of VHF Research renamed the Institute of Applied Electronics Research.

1947	4	The School of Law and Letters established.
Hokkaido University (1947–2004)		
1947	10	Hokkaido Imperial University renamed Hokkaido University. Seiya Ito named president.
1949	5	Under the National School Establishment Law, Hokkaido University reorganized into the new Hokkaido University with schools of law and letters, education, science, medicine, engineering, agriculture, and fisheries sciences (Hakodate). The Medical Clinic attached to the School of Medicine renamed the Hospital attached to the School of Medicine. Seiya Ito named president of Hokkaido University.
	6	The Department of Liberal Studies established (renamed the School of Liberal Studies in April 1951).
1950	3	Preparatory courses abolished.
	4	The Institute of Tuberculosis Research established. The School of Law and Letters divided into the School of Letters and the School of Law and Economics.
	10	Yoshichika Shima named president.
1952	4	The School of Veterinary Medicine established.
1953	4	New Graduate Schools of Letters, Education, Law, Economics and Business Administration, Science, Engineering, Agriculture, Veterinary Medicine, and Fisheries Sciences established.
	8	The School of Law and Economics divided into the School of Law and the School of Economics and Business Administration.
1954	10	Harusada Suginome named president.
1955	4	The Graduate School of Medicine established.
1957	7	The School of Liberal Studies renamed the School of Liberal Arts.
1958	4	The Graduate School of Pharmaceutical Sciences established.
1961	5	The Training Center for Engineering Teachers established (abolished in March 1969).
1965	4	The School of Pharmaceutical Sciences and Pharmacy established.
1966	40	Jiro Furuichi named president.
1967	2	Atae Abe named acting president upon the death of Jiro Furuichi.
	5	Juro Horiuchi named president.
	6	The School of Dental Medicine established.
	8	The Dental Hospital Attached to the School of Dental Medicine becomes operational.
1970	4	The Computer Center (joint-usage facility) established.
1971	5	Kichizo Niwa named president.
1972	5	The Health Management Center established. The Physical Education Center established.
1974	4	The Graduate School of Dental Medicine established.
	6	The Institute of Tuberculosis Research reorganized into the Institute of Immunological Research.
1975	5	Shigekazu Imamura named president.
1977	4	The Graduate School of Environmental Science (stand-alone graduate school) established.
1978	4	The Slavic Research Center established. The Central Institute of Isotope Science established.
1979	4	The Information Processing Education Center established. The Instrumental Analysis Center established.
1980	10	The College of Medical Technology established.

1981	4	The Institute of Language and Cultural Studies established. The Center for Experimental Plants and Animals established.
	5	Mikio Arie named president.
1985	4	The Research Center for Molecular Genetics established.
1987	5	Yoshio Ban named president.
1989	5	The Institute of Catalysis Research evolves into the Catalysis Research Center (joint-usage research facility).
1990	6	The Slavic Research Center designated as a joint-usage research facility.
1991	4	The International Student Center established. The Research Center for Quantum Interface Electronics established.
	5	Tsutomu Hiroshige named president.
1992	4	The Institute of Applied Electronics Research reorganized into the Research Institute for Electronic Science.
1993	4	The Graduate School of Environmental Science evolves into the Graduate School of Environmental Earth Science (stand-alone graduate school).
1994	6	The Center for Advanced Research of Energy established.
1995	4	The School of Liberal Arts abolished.
		The Center for Research and Development in Higher Education established.
		The Institute of Low Temperature Science designated as a joint-usage research facility.
		The Graduate School of Science and the Graduate School of Veterinary Medicine each evolves into a Graduate Research School, which places greater emphasis on graduate education and research.
1996	5	The Environmental Preservation Center established.
	5	Norihito Tanbo named president.
1996	8	The Center for Advanced Science and Technology established.
1997	8	The Venture Business Laboratory established.
1997	4	The Graduate School of Engineering evolves into a Graduate Research School.
1998	4	The Graduate School of Pharmaceutical Sciences evolves into a Graduate Research School.
1999	4	The Graduate School of Agriculture evolves into a Graduate Research School.
		The Information Processing Education Center evolves into the Education and Research Center for Information and Media Studies.
2000	4	The Hokkaido University Museum established.
		Graduate Schools of Letters, Education, Law, Economics and Business Administration, Medicine, Dental Medicine, and Fisheries Sciences each evolves into a Graduate Research School.
		The Graduate School of International Media and Communication Studies (stand-alone graduate school) established.
		The Institute of Immunological Research reorganized into the Institute for Genetic Medicine (the Research Laboratory Attached to the School of Medicine abolished).
2001	4	The Center for Northern Eurasian and Northern Pacific Studies established.
		The Field Science Center for Northern Biosphere assumes the management of the following facilities: the Marine Biological Station and the Institute of Algological Research, formerly attached to the School of Science; botanical gardens, farms,

		forests, and ranches formerly attached to the School of Agriculture; Lake Toya Inland Water Station, Usujiri Fisheries Station, and Nanae Fresh Water Laboratory, formerly attached to the School of Fisheries Sciences.
		The expanded Center for Advanced Science and Technology assumes the management of the Chromosome Research Unit, which was formerly attached to the School of Science, the Center for Experimental Plants and Animals, and the Research Center for Molecular Genetics.
		The Research Center for Quantum Interface Electronics evolves into the Research Center for Integrated Quantum Electronics.
	5	Mutsuo Nakamura named president.
2002	2	The Creative Scientific Research Institution established.
	4	The new training ship Ushio-maru becomes operational (the old training ship Hokusei-maru decommissioned).
2003	4	The Computer Center and the Education and Research Center for Computing and Multimedia Studies evolves into the Information Initiative Center.
	5	The Research and Education Center for Brain Science established.
	10	The Department of Health Sciences established in the School of Medicine.
		The University Hospital attached to the School of Medicine and the Dental Hospital attached to the School of Dental Medicine integrated into the Hokkaido University Hospital.
The Management Center of Intellectual Property established.		
National University Corporation Hokkaido University (2004 to present)		
2004	4	Hokkaido University becomes the National University Corporation Hokkaido University.
		The Graduate School of Information Science and Technology (stand-alone graduate school) established.
		The Center for Advanced Research of Energy evolves into the Center for Advanced Research of Energy Conversion Materials.
2005	3	The Center for Northern Eurasian and Northern Pacific Studies abolished.
	4	The Faculty of Fisheries Sciences, the Faculty of Environmental Earth Science, the Graduate School of Fisheries Sciences, and the Graduate School of Environmental Science established. (The Department of Fisheries Sciences and the Department of Environmental Earth Science [stand-alone department] abolished in the graduate school.)
		The Graduate School of Public Policy (professional graduate school) and the Faculty of Public Policy established.
		The Center for Advanced Science and Technology and the Creative Scientific Research Institution integrated into the new Creative Scientific Research Institution.
		The Physical Education Center integrated into the Center for Research and Development in Higher Education.
		The Research Center for Zoonosis Control established.
		The Admission Center established.
	5	The Hokkaido University Archives established.
2006	4	The Faculty of Science, the Faculty of Pharmaceutical Sciences, the Research Faculty of Agriculture, the Faculty of Advanced Life Science, the Graduate School of Science, the Graduate School of Agriculture, and the Graduate School of Life Science established. (The Department of Science, the

		Department of Pharmaceutical Sciences, and the Department of Agriculture abolished in the graduate school.) The Center for Advanced Tourism Studies established.
2007	3	The Education and Research Support Office established as an administrative unit.
		The College of Medical Technology abolished.
	4	The ICT Promotion Office established as an administrative unit.
		The Faculty of Education, the Research Faculty of Media and Communication, the Graduate School of Education, and the Graduate School of International Media, Communication and Tourism Studies established. (The Department of Education, the Department of International Media and Communication, and the Institute of Language and Cultural Studies abolished.)
		The Center for Language Learning established.
		The Center for Ainu and Indigenous Studies established.
		The Center for Experimental Research in Social Sciences established.
	5	Hiroshi Saeki named president.
	10	The Management Center of Intellectual Property evolves into the Management Center for Intellectual Property and Innovation.
2008	4	The Faculty of Health Sciences and the Graduate School of Health Sciences (for master's courses) established.
		The Research Institute for Information Law and Policy established.
		The Research Center for Environmental Nano and Bio Engineering established.
		The Research Center for Integrative Mathematics established.
		The Center for Sustainability Science established.
		The Admission Center, formerly a University education development center, evolves into an administrative unit.
2009	4	The Management Center for Intellectual Property and Innovation (an administrative unit) reorganized into the Center for Innovation and Business Promotion (an administrative unit).
		The Front Office for Resource Education and Development established as an administrative unit.
		The Center of Education and Research for Topological Science and Technology established.
		The Creative Scientific Research Institution and the Instrumental Analysis Center reorganized into the Creative Research Institution (an administrative unit).
	8	The North Branch of the Hokkaido University Library renamed the North Library.
2010	4	The Faculty of Engineering and the Graduate School of Engineering established.
		The Graduate School of Chemical Sciences and Engineering established.
		The Graduate School of Health Sciences (for doctoral courses) established.
		The Center for Environmental and Health Sciences established.
		The Health Management Center evolves into the Health Care Center.
	7	The Office of International Affairs established as an administra-

		tive unit, into which the International Student Center is transferred.
	10	The Institute for the Advancement of Higher Education established as an administrative unit, into which the Center for Research and Development in Higher Education is transferred.
	11	The Office for a Sustainable Campus established as an administrative unit.
2011	3	The Office of Safety and Health established as an administrative unit.
	4	The Center for Translational Research established.
		The Venture Business Laboratory renamed the Meme Media Laboratory.
		The Environmental Preservation Center transferred to the Office for a Sustainable Campus (an administrative unit).
2012	4	The Graduate School of Veterinary Medicine and the Faculty of Animal Husbandry, Obihiro University of Agriculture and Veterinary Medicine establish the Cooperative Veterinary Education Program.
		The Graduate School of Life Science establishes a Clinical Pharmacy major (doctoral program).
2013	4	Keizo Yamaguchi named president.

Organizational Structure

General Organization

HOKKAIDO UNIVERSITY

GRADUATE SCHOOLS

Letters
Law
Economics and Business Administration
Medicine
Dental Medicine
Veterinary Medicine
Information Science and Technology
Fisheries Sciences
Environmental Science / Environmental Earth Science
Science
Pharmaceutical Sciences
Agriculture
Life Science
Advanced Life Science
Education
International Media, Communication, and Tourism Studies
Media and Communication
Health Sciences
Engineering
Chemical Sciences and Engineering
Public Policy

The Advanced Institute for Law and Politics
Institute for Animal Experimentation
Veterinary Teaching Hospital
Institute of Seismology and Volcanology
Center for Genome Dynamics
Nuclear Reaction Data Centre
Frontier Research Center for Post-Genome Science and Technology
Research and Clinical Center for Child Development
Center for Advanced Research of Energy and Materials
Center for Public Policy Studies

UNDERGRADUATE SCHOOLS

Letters
Education
Law
Economics and Business Administration
Science
Medicine
Dental Medicine
Pharmaceutical Sciences and Pharmacy
Engineering
Agriculture
Veterinary Medicine
Fisheries Sciences

Hokkaido University Hospital
Experimental Station for Medicinal Plant Studies
Training Ship "Oshoro-maru" **
Training Ship "Ushio-maru"

RESEARCH INSTITUTES

Institute of Low Temperature Science*
Research Institute for Electronic Science*
Institute for Genetic Medicine*

Pan-Okhotsk Research Center
Nanotechnology Research Center
Institute for Animal Experimentation
Center for Infection-Associated Cancer

Central Library

North Library

RESEARCH CENTERS

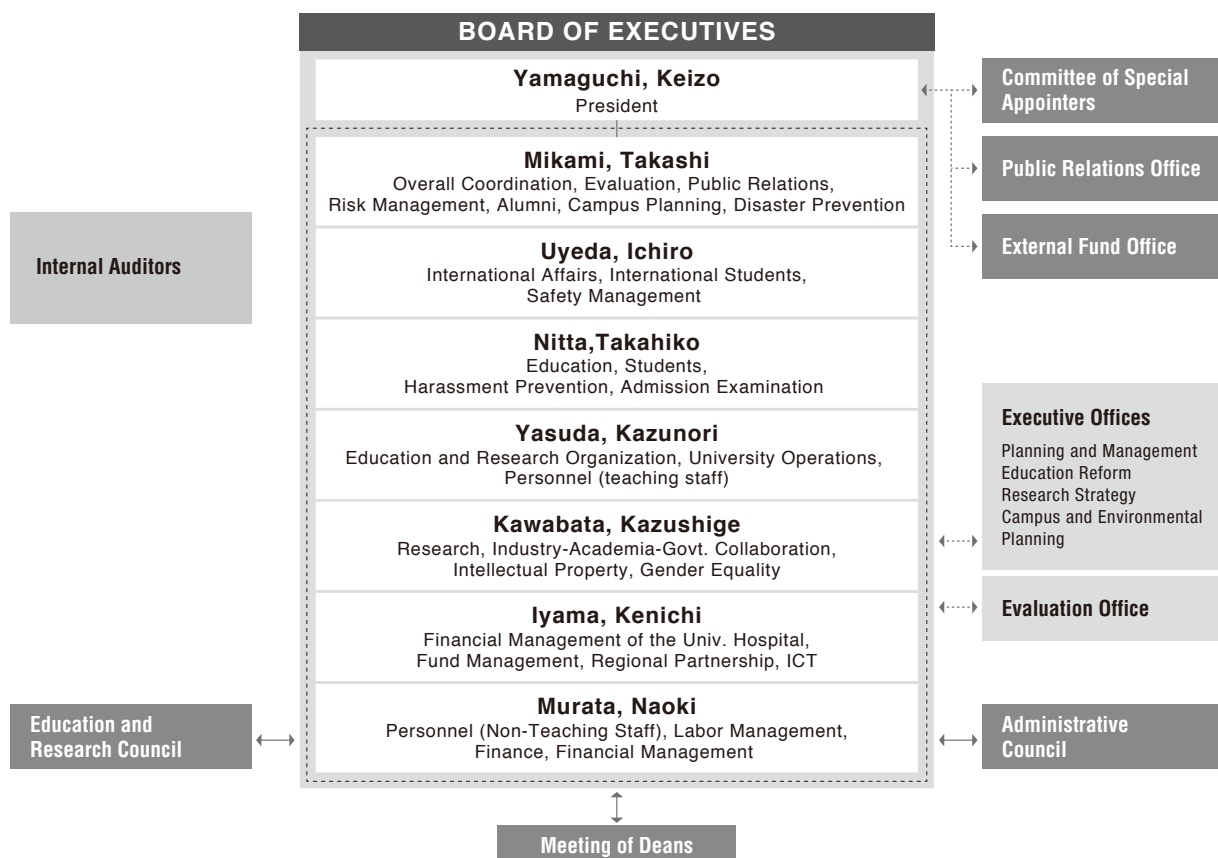
Catalysis Research Center*
Slavic Research Center*
Information Initiative Center*
Central Institute of Isotope Science
Hokkaido University Museum
Research Center for Integrated Quantum Electronics
Field Science Center for Northern Biosphere
Meme Media Laboratory
Research and Education Center for Brain Science
Research Center for Zoonosis Control*
Hokkaido University Archives
Center for Advanced Tourism Studies
Center for Language Learning

Center for Ainu and Indigenous Studies
Center for Experimental Research in Social Sciences
Research Institute for Information Law and Policy
Research Center for Environmental Nano and Bio Engineering
Research Center for Integrative Mathematics
Center for Sustainability Science
Center of Education and Research for Topological Science and Technology
Center for Environmental and Health Sciences
Center for Translational Research
Health Care Center

*Denotes joint usage research centers **Denotes joint usage educational facilities

Data as of May 1, 2013

Governing Organization



University Planning Operations	
Office of Technical Support	Creative Research Institution
ICT Promotion Office	Office of International Affairs
Center for Innovation and Business Promotion	Institute for the Advancement of Higher Education
Admission Center	Office for a Sustainable Campus
Office for HR Education and Development	Office of Health and Safety

Administrative Organization



Data as of May 1, 2013

Number of Staff

EXECUTIVE BOARD	President (1), 7 Executives (7), Internal Auditors (2)	Professors	Associate Professors	Lecturers	Assistant Professors	Research Associates	Specialist Staff	Administrative Staff	Technical Staff	TOTAL
GOVERNING ORGANIZATION STAFF	Technical Support Office	-	-	-	-	-	-	-	-	0
	Environmental Information Promotion Office	-	-	-	-	-	-	13	14	27
	Center for Innovation and Business Promotion	-	-	-	-	-	7	-	-	7
	Admission Center	-	-	-	-	-	-	-	-	0
	Front Office for Human Resource Education and Development	-	-	-	-	-	-	-	-	0
	Creative Research Institution	-	1	-	1	-	1	-	8	11
	Office of International Affairs	3	6	4	-	-	5	26	-	44
	Institute of Advancement of Higher Education	3	5	-	-	-	-	-	4	12
	Office for a Sustainable Campus	-	-	-	-	-	-	-	-	0
	Office of Health and Safety	-	1	-	-	-	1	-	-	2
EDUCATIONAL RESEARCH ORGANIZATION STAFF	Letters	51	41	-	12	-	-	-	2	106
	Law	34	19	2	9	4	-	2	-	70
	Economics and Business Administration	24	20	-	5	-	2	-	-	51
	Medicine	44	25	12	58	3	-	-	13	155
	Dental Medicine	16	13	2	48	-	-	-	4	83
	Veterinary Science	14	13	3	16	-	-	-	3	49
	Information Science and Technology	41	36	-	17	-	-	-	-	94
	Fisheries Sciences	31	38	1	11	-	-	-	39	120
	Environmental Science / Environmental Earth Science	21	25	-	9	1	-	-	-	56
	Science	74	67	5	50	2	2	-	19	219
	Pharmaceutical Sciences	15	13	5	25	-	-	-	2	60
	Agriculture	47	38	24	13	-	-	-	11	133
	Life Science / Advanced Life Science	11	6	2	8	-	-	-	-	27
	Education	17	19	-	4	1	-	-	-	41
	International Media, Communication, and Tourism Studies	26	26	-	2	-	-	-	-	54
	Health Sciences	28	16	6	18	1	-	-	-	69
	Engineering	100	97	3	83	1	-	-	45	329
	Chemical Sciences and Engineering	-	-	-	-	-	-	-	-	0
	Public Policy	11	6	2	-	-	-	-	-	19
	Hokkaido University Hospital	5	15	54	84	-	-	-	656	814
	Institute of Low Temperature Science	14	10	2	18	-	-	-	9	53
	Research Institute of Electronic Science	16	11	1	21	-	-	-	10	59
	Institute of Genetic Medicine	8	7	3	12	-	-	-	7	37
	Catalysis Research Center	8	8	-	6	-	-	-	6	28
	Slavic Research Center	8	4	-	1	1	-	-	-	14
	Information Initiative Center	6	4	-	2	-	-	-	-	12
	Central Institute of Isotope Science	1	1	-	1	-	-	-	2	5
	The Hokkaido University Museum	2	3	2	2	-	-	-	-	9
	Research Center for Integrated Quantum Electronics	3	3	-	-	-	-	-	-	6
	Field Science Center for Northern Biosphere	15	12	-	13	-	-	-	73	113
	Meme Media Laboratory	-	-	-	-	-	-	-	-	0
	Research and Education Center for Brain Science	-	-	-	-	-	-	-	-	0
	Research Center for Zoonosis Control	5	4	1	2	-	-	-	2	14
	Hokkaido University Archives	-	-	-	1	-	-	-	1	2
	Center for Advanced Tourism Studies	3	1	-	-	-	-	-	-	4
	Center for Language Learning	-	-	-	-	-	-	-	-	0
	Center for Ainu and Indigenous Studies	1	3	-	1	-	-	-	-	5
	Center for Experimental Research in Social Sciences	-	-	-	1	-	-	-	-	1
	Research Institute for Information Law and Policy	-	-	-	-	-	-	-	-	0

Data as of May 1, 2013

EXECUTIVE BOARD		Professors	Associate Professors	Lecturers	Assistant Professors	Research Associates	Specialist Staff	Administrative Staff	Technical Staff	TOTAL
EDU. RESEARCH ORG. STAFF	Research Center for Environmental Nano and Bio Eng.	-	-	-	-	-	-	-	-	0
	Research Center for Integrative Mathematics	-	-	-	-	-	-	-	-	0
	Center for Sustainability Science	1	-	-	-	-	-	-	-	1
	Center for Education and Research for Topological Sci. &Tech.	-	-	-	-	-	-	-	-	0
	Center for Environmental and Health Sciences	-	-	-	-	-	-	-	-	0
	Center for Translational Research	1	1	-	-	-	-	-	-	2
	Health Care Center	1	-	1	-	-	-	-	9	11
ADMINISTRATIVE STAFF	General Affairs and Planning Department	-	-	-	-	-	-	69	1	70
	Finance Department	-	-	-	-	-	-	79	-	79
	Academic Affairs Department	-	-	-	-	-	-	59	-	59
	Research Promotion Department	-	-	-	-	-	-	29	-	29
	Facilities Department	-	-	-	-	-	-	9	24	33
	Graduate School of Letters / Faculty of Letters Office	-	-	-	-	-	-	15	-	15
	Faculty of Education Office	-	-	-	-	-	-	7	-	7
	Graduate School of Law/School of Law Office	-	-	-	-	-	-	17	-	17
	Economics and Business Administration Office	-	-	-	-	-	-	7	-	7
	Science / Life Sciences Office	-	-	-	-	-	-	39	2	41
	School of Medicine Office	-	-	-	-	-	-	38	2	40
	School of Dental Medicine Office	-	-	-	-	-	-	10	1	11
	School of Pharmaceutical Sciences and Pharmacy Office	-	-	-	-	-	-	12	-	12
	School of Engineering Office	-	-	-	-	-	-	67	4	71
	School of Agriculture Office	-	-	-	-	-	-	21	2	23
	School of Veterinary Medicine Office	-	-	-	-	-	-	11	-	11
	Hakodate Campus Office	-	-	-	-	-	-	23	4	27
	Office of Hokkaido University Hospital	-	-	-	-	-	-	113	6	119
	Graduate School of Environmental Science Office	-	-	-	-	-	-	13	-	13
	Int'l Media, Communication, and Tourism Studies Office	-	-	-	-	-	-	7	-	7
	Institute of Low Temperature Science Office	-	-	-	-	-	-	9	-	9
	University Library Office	-	-	-	-	-	-	89	-	89
	Northern Campus Administration	-	-	-	-	-	-	12	-	12
	Field Science Center for Northern Biosphere Office	-	-	-	-	-	-	18	-	18
	Office of Internal Auditors	-	-	-	-	-	-	4	-	4
	TOTAL	709	618	135	554	14	18	818	985	3,861
1 President, 7 Executives, 2 Auditors										

Data as of May 1, 2013

Number of Students / Degrees Granted

Undergraduate Courses

Faculties	Regular Students	Research Students	Auditors	Total
Letters	650	38	59	747
Education	185	7	23	215
Law	721	-	12	733
Economics and Business Administration	641	7	22	670
Science	970	1	8	979
Medicine	1,140	-	1	1,141
Dental Medicine	270	2	-	272
Pharmaceutical Sciences and Pharmacy	316	-	1	317
Engineering	2,239	-	15	2,254
Agriculture	716	-	21	737
Veterinary Medicine	206	-	1	207
Fisheries Sciences	663	5	15	683
General Education	2,677	-	-	2,677
Total	11,394	60	178	11,632

Graduate Courses

Faculties	Regular Students			Research Students	Auditor	Total
	Master's Course	Professional Course	Doctoral Course			
Letters	248	-	212	14	11	485
Law	41	168	50	10	11	280
Economics and Business Administration	69	48	33	2	6	158
Medicine	36	-	402	5	5	448
Dental Medicine	-	-	149	11	-	160
Veterinary Medicine	-	-	85	8	-	93
Information Science and Technology	416	-	167	10	5	598
Fisheries Science	220	-	85	-	4	309
Environmental Science	282	-	181	-	2	465
Faculty of Environmental Earth Science	-	-	-	7	-	7
Science	282	-	128	-	6	416
Faculty of Science	-	-	-	11	-	11
Agriculture	375	-	143	-	1	519
Research Faculty of Agriculture	-	-	-	6	-	6
Life Science	252	-	144	-	2	398
Education	106	-	95	-	3	204
Faculty of Education	-	-	-	3	-	3
Graduate School of Education	-	-	13	-	-	13
International Media, Communication, and Tourism Studies	100	-	77	-	3	180
Research Faculty of Media and Communication	-	-	-	11	-	11
Graduate School of Int'l Media, Communication and Tourism Studies	-	-	4	-	-	4
Health Sciences	85	-	41	-	-	126
Research Faculty of Health Sciences	-	-	-	6	-	6
Engineering	710	-	196	-	7	913
Faculty of Engineering	-	-	-	8	-	8
Graduate School of Engineering	1	-	17	-	-	18
Graduate School of Chemical Science and Engineering	304	-	114	-	-	418
Graduate School of Public Policy	-	91	-	-	1	92
Faculty of Public Policy	-	-	-	-	2	2
Total	3,527	307	2,336	112	69	6,351

Institutes and Centers

Institutes / Centers	Research Students, etc.	Institutes / Centers	Research Students, etc.
Institute of Low Temperature Science	1	Office of International Affairs	48
Research Institute for Electronic Science	0	Hokkaido University Museum	3
Slavic Research Center	2	Field Science Center for Northern Biosphere	1
Information Initiative Center	2	Center for Advanced Tourism Studies	2
Total			60

Number of Degrees Granted

Degrees	2012	Overall
Bachelor's Degrees	2,568	129,086
Master's Degrees	1,598	42,192
Professional Degrees	114	1,029
Doctorates	487	22,500
Total	4,767	194,807

Data as of May 1, 2013

International Student Numbers

International Student Numbers by Country / Region

AREA	COUNTRY	Letters	Law	Economics and Business	Medicine	Dental Medicine	Veterinary Medicine	Information Science and Technology	Fisheries Sciences	Environmental Science/ Environmental Earth Science	Science	Agriculture	Life Science / Advanced Life Science	Education	International Media, Comm. and Tourism Studies / Media and Comm.	Health Sciences	Engineering	Graduate School of Chemical Sciences and Engineering	Public Policy	Institute for the Advancement of Higher Education (First Year Education Division)	Slavic Research Center	Information Initiative Center	Center for Advanced Tourism Studies	International Student Center	TOTAL
Asia	Bangladesh	-	-	-	-	1	1	1	2	6	3	1	9	-	-	-	7	2	-	-	-	-	-	-	33
	Brunei	-	-	-	-	-	-	-	-	1	-	-	-	-	-	-	-	-	-	-	-	-	-	-	1
	Cambodia	-	-	-	-	-	-	-	-	-	-	-	-	-	-	-	3	-	-	-	-	-	-	-	3
	China	158	50	52	13	4	3	60	35	39	20	48	24	57	47	6	78	28	5	9	1	2	-	17	756
	India	-	-	-	-	-	-	-	1	3	-	-	11	-	-	-	1	5	-	-	-	-	-	2	23
	Indonesia	1	-	-	-	-	1	3	4	10	8	12	-	-	-	-	13	1	-	1	-	-	-	2	56
	Korea	30	8	3	1	2	5	5	7	4	5	31	1	1	4	1	36	3	1	9	-	-	-	4	161
	Laos	-	-	1	-	-	-	-	-	-	-	-	-	-	-	-	1	-	-	-	-	-	-	-	2
	Malaysia	-	-	-	1	-	1	-	2	1	-	3	-	-	-	-	10	-	-	1	-	-	-	-	19
	Mongolia	-	1	-	1	-	1	-	-	4	1	1	1	-	-	-	1	-	-	-	-	-	-	-	11
	Myanmar	-	-	-	-	-	-	-	-	-	-	4	-	-	-	-	-	-	1	-	-	-	-	-	5
	Nepal	-	-	-	2	-	3	1	-	3	-	-	-	-	-	-	1	-	-	-	-	-	-	-	10
	Pakistan	-	-	-	-	-	-	-	-	-	-	-	-	-	-	-	4	-	-	-	-	-	-	1	5
	Philippines	-	-	-	-	-	1	1	1	5	2	-	1	-	-	-	5	2	-	-	-	-	-	2	20
	Singapore	1	-	-	-	-	-	-	-	-	-	-	-	1	-	-	-	-	-	-	-	-	-	1	3
	Sri Lanka	-	-	-	-	-	-	-	-	-	1	-	-	-	-	-	5	-	-	-	-	-	-	-	6
	Taiwan	5	10	3	1	1	-	1	1	3	-	3	1	1	7	-	-	-	-	-	-	-	-	1	38
	Thailand	1	-	-	-	-	6	-	2	3	-	7	1	1	-	-	9	1	-	-	-	-	-	1	32
	Vietnam	-	-	-	-	-	1	1	-	-	-	2	-	-	2	-	1	-	-	-	-	-	-	1	8
Oceania	Australia	-	-	-	-	-	1	1	-	-	-	-	-	-	-	-	1	-	-	-	-	-	-	-	2
	New Zealand	1	-	-	-	-	-	-	-	-	-	-	-	-	-	-	-	-	-	-	-	-	-	-	1
	Papua New Guinea	-	-	-	-	-	-	-	-	-	-	-	-	-	-	-	-	-	-	-	-	-	-	1	1
	Solomon Is.	-	-	-	-	-	-	-	-	-	-	-	-	-	-	-	1	-	-	-	-	-	-	-	1
Europe	Azerbaijan	1	-	-	-	-	-	-	-	-	-	-	-	-	-	-	-	-	-	-	-	-	-	-	1
	Bosnia and Herzegovina	-	-	-	-	-	-	-	-	-	1	-	-	-	-	-	-	-	-	-	-	-	-	-	1
	Croatia	1	-	-	-	-	-	-	-	-	-	-	-	-	-	-	-	-	-	-	-	-	-	-	1
	Czech Republic	1	-	-	-	-	-	-	-	-	-	-	-	-	-	-	-	-	-	-	-	-	-	-	1
	Estonia	-	-	-	1	-	-	-	-	-	-	-	-	-	-	-	-	-	-	-	-	-	-	-	1
	Finland	3	2	1	-	-	-	-	-	-	-	-	-	-	-	-	1	-	-	-	-	-	-	1	8
	France	2	2	1	-	-	-	3	-	-	-	-	-	-	-	-	2	-	-	-	-	-	-	-	10
	Germany	-	-	2	-	-	-	3	-	-	-	-	-	-	-	-	-	-	-	-	-	-	-	2	7
	Greece	1	-	-	-	-	-	-	-	-	-	-	-	-	-	-	-	-	-	-	-	-	-	-	1
	Hungary	-	-	-	-	-	1	1	-	-	-	-	-	-	-	-	-	-	-	-	-	-	-	-	2
	Italy	1	1	-	-	-	-	-	-	-	-	-	-	-	-	-	1	-	-	-	-	-	-	-	3
	Kazakhstan	3	-	-	-	-	-	-	-	-	2	-	-	-	-	-	-	-	-	-	-	-	-	-	5
	Kyrgyzstan	-	-	1	-	-	-	-	-	-	-	-	-	-	-	-	-	-	-	-	-	-	-	-	1
	Poland	-	-	-	-	-	-	3	-	-	-	-	-	-	2	-	-	-	-	-	-	-	-	-	5
	Russia	2	1	-	-	-	-	1	-	-	2	-	-	1	2	-	-	-	-	-	-	-	1	2	12
	Serbia	-	-	-	-	-	-	-	1	-	-	-	-	-	-	-	-	-	-	-	-	-	-	-	1
	Spain	-	-	-	-	-	-	-	-	-	-	-	-	-	-	-	2	-	-	-	-	-	-	-	2
	Sweden	-	-	-	-	-	-	-	-	-	-	-	-	-	-	-	-	-	-	-	-	-	-	1	1
	Switzerland	-	-	-	-	-	-	-	-	-	-	-	-	-	-	-	-	-	-	-	-	-	-	1	1
	United Kingdom	3	2	-	-	-	-	-	-	-	-	-	-	-	-	-	-	-	-	-	-	-	-	1	6
	Ukraine	-	-	-	-	-	-	-	-	-	-	-	-	-	1	-	-	-	-	-	-	-	-	1	2

Data as of May 1, 2013

International Student Numbers (con't)

International Student Numbers

AREA	COUNTRY	Letters	Law	Economics and Business	Medicine	Dental Medicine	Veterinary Medicine	Information Science and Technology	Fisheries Sciences	Environmental Science/ Environmental Earth Science	Science	Agriculture	Life Science / Advanced Life Science	Education	International Media, Comm., and Tourism Studies / Media and Comm.	Health Sciences	Engineering	Graduate School of Chemical Sciences and Engineering	Public Policy	Institute for the Advancement of Higher Education (First Year Education Division)	Slavic Research Center	Information Initiative Center	Center for Advanced Tourism Studies	International Student Center	TOTAL
N.Am	Canada	1	-	-	-	-	-	-	-	-	1	2	-	-	-	-	-	-	-	-	-	-	-	-	4
	U.S.A.	6	2	3	-	-	-	-	-	1	1	1	-	-	-	-	1	-	-	-	-	-	-	-	15
South America	Brazil	1	-	-	-	-	-	1	-	-	-	-	-	-	-	-	1	-	-	2	-	-	-	-	5
	Costa Rica	-	-	-	-	-	-	1	-	-	-	-	-	-	-	-	-	-	-	-	-	-	-	-	1
	Cuba	-	-	-	-	-	-	-	-	-	-	1	-	-	-	-	-	-	-	-	-	-	-	-	1
	Guatemala	-	-	-	-	-	-	-	-	-	-	-	-	-	-	-	1	-	-	-	-	-	-	-	1
	Guyana	-	-	-	-	-	-	-	-	1	-	-	-	-	-	-	-	-	-	-	-	-	-	-	1
	Honduras	-	-	-	-	-	-	-	-	-	-	-	-	-	-	-	-	-	-	-	-	-	-	1	1
	Jamaica	-	-	-	1	-	-	-	-	-	-	-	-	-	-	-	-	-	-	-	-	-	-	-	1
	Mexico	-	-	-	-	-	-	1	-	-	-	-	-	-	-	-	-	-	-	-	-	-	-	-	1
	Panama	-	1	-	-	-	-	-	-	-	-	-	-	-	-	-	-	-	-	-	-	-	-	-	1
	Peru	-	-	-	-	-	-	-	1	-	-	-	1	-	-	-	-	-	-	-	-	-	-	-	2
	Venezuela	-	-	-	-	-	-	-	-	-	-	-	-	-	-	-	1	-	-	1	-	-	-	-	2
Middle East	Iran	-	-	1	-	-	-	-	-	1	-	1	1	-	-	-	2	-	-	-	-	-	-	-	6
	Israel	-	-	-	-	-	-	-	-	-	-	-	-	1	-	-	-	-	-	-	-	-	-	-	1
	Jordan	-	-	-	-	-	-	-	-	-	-	-	-	-	-	-	1	-	-	-	-	-	-	1	2
	Lebanon	-	-	-	-	-	-	3	-	-	-	-	-	-	-	-	-	-	-	-	-	-	-	-	3
	Palestinian Authority	-	-	-	-	-	-	-	-	-	-	-	-	-	-	-	1	-	-	-	-	-	-	-	1
	Syria	-	-	-	-	-	-	2	-	-	-	-	-	-	-	-	-	-	-	-	-	-	-	-	2
	Turkey	1	-	-	-	-	-	-	-	-	1	-	-	-	-	-	-	-	-	-	-	-	-	-	2
Africa	Burkina Faso	-	-	-	-	-	-	-	-	-	-	-	-	-	-	-	1	-	-	-	-	-	-	-	1
	Central Africa	-	-	-	-	-	-	-	-	-	-	-	-	-	-	-	1	-	-	-	-	-	-	-	1
	Congo	-	-	1	-	-	-	-	-	-	-	-	-	-	-	-	-	-	-	-	-	-	-	-	1
	Egypt	-	-	-	4	-	7	-	-	-	1	-	2	-	-	-	2	1	-	-	-	-	-	1	18
	Eritrea	-	-	2	1	-	-	-	-	-	-	-	-	-	-	-	-	-	-	-	-	-	-	-	3
	Ethiopia	-	-	-	-	-	1	1	-	-	-	-	-	-	-	-	-	-	-	-	-	-	-	1	3
	Ghana	-	-	-	-	-	2	-	-	1	-	-	-	-	-	-	1	-	-	-	-	-	-	-	4
	Guinea	-	-	-	-	-	-	-	-	-	-	1	-	-	-	-	-	-	-	-	-	-	-	-	1
	Kenya	-	-	-	-	-	1	-	1	-	-	-	-	-	-	-	2	-	-	-	-	-	-	-	4
	Libya	-	-	-	1	-	-	-	-	-	-	-	-	-	-	-	-	-	-	-	-	-	-	-	1
	Madagascar	-	-	-	-	-	-	-	-	1	-	-	-	-	-	-	-	-	-	-	-	-	-	1	2
	Malawi	-	-	-	1	-	-	-	-	-	-	-	-	-	-	-	-	-	-	-	-	-	-	1	2
	Mauritania	-	-	-	-	-	-	-	-	-	1	-	-	-	-	-	-	-	-	-	-	-	-	-	1
	Nigeria	-	1	2	-	-	1	-	-	1	1	1	1	-	-	-	1	-	-	-	-	-	-	-	9
	Senegal	-	-	-	-	-	-	-	-	-	-	-	-	-	-	-	1	-	-	-	-	-	-	-	1
	Tanzania	-	-	-	-	-	-	-	1	-	-	-	-	-	-	-	-	-	-	-	-	-	-	-	1
	Uganda	-	-	-	-	-	1	1	-	-	-	-	-	-	-	-	-	-	-	-	-	-	-	-	2
	Zambia	-	-	-	-	-	2	2	-	-	-	1	-	-	-	-	1	-	-	-	-	-	-	-	6
		224	81	73	28	8	39	97	58	89	51	120	55	63	65	7	198	46	7	23	1	2	1	48	1,384

International Academic Exchange

Distribution Map of Counter-part Universities

(includes University-wide and Department-wide)



Inter-University Exchange Agreements (126 Agreements, 132 Universities in 35 Countries / Regions)

Hokkaido University has concluded agreements for academic and educational exchange and cooperation with universities abroad as follows :

Area	Country/Region	University	Concluded
Asia	Bangladesh	University of Dhaka	December 24, 2009 *
	China	University of Science and Technology Beijing	December 26, 1986 *
		Zhejiang University	January 20, 2002 *
		Peking University	February 19, 2003 *
		Fudan University	August 3, 2004 *
		Jilin University	September 22, 2004 *
		Nankai University	May 11, 2006 *
		Nanjing University	May 11, 2006 *
		Xi'an Jiaotong University	May 26, 2008 *
		Tsinghua University	June 30, 2008 *
		Northeast Normal University	May 8, 2009 *
		Sichuan University	October 15, 2009 *
		Wuhan University	November 30, 2009 *
		Dalian University of Technology	January 20, 2010 *
		Beijing Normal University	January 20, 2010 *
		Lanzhou University	April 9, 2010 *
		Southeast University	October 29, 2010 *
		Xiamen University	November 25, 2010 *
		Shanghai Ocean University	December 1, 2010 *
		Ocean University of China	February 3, 2011 *
		The Chinese University of Hong Kong	September 30, 2011 *
		Northwest Agriculture and Forestry University	October 13, 2011 *
		Shanghai Jiao Tong University	October 19, 2011 *
		Huazhong University of Science and Technology	December 27, 2012 *
	India	University of Delhi	February 26, 2010 *
	Indonesia	University of Palangka Raya	August 26, 2006 *
		Bogor Agricultural University	July 29, 2009 *
		Universitas Gadjah Mada	July 23, 2010 *
	Korea	Seoul National University	October 1, 1997 *
		Chonbuk National University	February 9, 2000 *
		Yeungnam University	August 4, 2000 *

* the exchange of students is included in the Exchange Agreement

Inter-University Exchange Agreements (con't)

Area	Country / Region	University	Concluded
Asia	Korea	Pukyong National University	October 25, 2000 *
		Chungnam National University	July 9, 2001 *
		Kangwon National University	June 13, 2003 *
		Chungbuk National University	December 6, 2007 *
		Hankyong National University	February 16, 2009 *
		Dong-eui University	April 23, 2009 *
		Korea Maritime University	June 3, 2010 *
		Korea University	October 15, 2010 *
		Yonsei University	December 6, 2010 *
		Kongju National University	August 2, 2011
		The University of Incheon	April 16, 2012
		Hanyang University	July 10, 2012
		Sungkyunkwan University	December 27, 2012
	Malaysia	Universiti Sains Malaysia	June 7, 2010
	Mongolia	Mongolian State University of Agriculture	January 26, 2009
		National University of Mongolia	December 22, 2011
	Nepal	Tribhuvan University	October 24, 2010
	Phillipines	De La Salle University	January 11, 2009 *
	Sri Lanka	University of Peradeniya	November 14, 2006 *
	Taiwan	National Taiwan University	March 3, 2005 *
		Academia Sinica	September 11, 2008 **
		National Chung Cheng University	November 4, 2009 *
		TamKang University	November 29, 2010 *
		National Chung Hsing University	March 14, 2012 *
		National Tsing Hua University	August 17, 2012 *
		National Cheng Kung University	January 23, 2013 *
		National Chiao Tung University	March 22, 2013 *
	Thailand	Asian Institute of Technology	November 4, 2008 *
		Mahidol University	November 26, 2008 *
		Kasetsart University	January 6, 2009 *
		Chulalongkorn University	July 3, 2009 *
	Vietnam	Vietnam National University Ho Chi Minh City	February 23, 2010 *
		The VNU University of Science	March 1, 2013 *
		Can Tho University	March 1, 2013
		Vietnam National Univ. Ho Chi Minh City Univ. of Technology	March 1, 2013 **
Middle East	Saudi Arabia	King Abdulaziz University	July 8, 2010 *
Oceania	Australia	University of Tasmania	January 9, 2009 *
		Australian National University	June 14, 2012 *
		The University of New South Wales	November 5, 2012 *
		The University of Sydney	April 30, 2013 *
	New Zealand	The University of Auckland	July 25, 2003 *
Europe	Estonia	University of Tartu	October 28, 2008 *
	Finland	Universtiy of Oulu	December 11, 2001
		University of Helsinki	March 11, 2011 *
		University of Lapland	June 8, 2011
	France	Universite de Strasbourg	October 10, 2010 *
		For the Consortium of Universities of Grenoble :	*
		Université Joseph Fourier, Université Pierre Medes France, Université Stendhal, Institut National Polytechnique de Grenoble, Institut d'Etudes Politiques de Grenoble, Université de Savoie	October 10, 2000 *
			*

Data as of May 1, 2013

Inter-University Exchange Agreements (con't)			
Area	Country / Region	University	Concluded
Europe	France	Rennes Institute of Political Studies	September 4, 2002 *
		Fondation Nationale des Sciences Politiques	May 18, 2007 *
		École Polytechnique	June 29, 2008 *
		École Supérieure de Physique et de Chimie Industrielles de Paris	March 31, 2009 *
		Université de la Méditerranée (Aix - Marseille II)	May 18, 2009 *
		École Nationale Supérieure de Mécanique et d'Aérotechnique	March 25, 2013
		Ludwig-Maximilians-Universität München	January 31, 1983 *
	Germany	University of Bremen	February 11, 2010 *
		Technische Universität München	July 6, 2010 *
	Hungary	Budapest University of Technology and Economics	November 4, 2004 *
	Italy	Politecnico di Torino	July 1, 2008 *
	Poland	AGH University of Science and Technology	July 6, 2010 *
	Serbia	The University of Belgrade	May 10, 2011 *
	Sweden	KTH Royal Institute of Technology	January 20, 2010 *
	Switzerland	University of Geneva	June 7, 2005 *
		Swiss Federal Institute of Technology Zurich (ETH Zurich)	June 13, 2007 *
	U.K.	The University of Warwick	January 5, 2000 *
		The University of Sheffield	October 5, 2010 *
		The University of Edinburgh	February 23, 2011 *
		New Castle University	March 1, 2013
	Kazakhstan	Al-Farabi Kazakh National University	August 1, 2011 *
	Russia	Lomonosov Moscow State University	October 10, 2001 *
		Sakhalin State University	October 23, 2007 *
		Far Eastern Federal University	November 12, 2007 *
		Far Eastern Branch of the Russian Academy of Sciences	July 23, 2009
		Irkutsk State University	March 30, 2010 *
		North-Eastern Federal University	April 2, 2012 *
		Saint Petersburg State University	April 18, 2013 *
North America	Canada	University of Alberta	August 13, 1997 *
		The University of British Columbia	June 29, 2008
		Dalhousie University	July 30, 2009
	U.S.A.	Portland State University	December 19, 1972 *
		University of Massachusetts	September 14, 1976 *
		Cornell University	June 16, 1982
		University of Alaska	December 20, 1986 *
		University of Wisconsin-Madison	April 21, 1987 *
		Ohio State University	September 1, 1998 *
		The University of Texas Health Science Center at Houston	March 10, 2003
		University of Oregon	August 17, 2006 **
		University of California, Los Angeles	June 29, 2008
		University of Hawai'i at Manoa	June 30, 2003 *
		University of Hawai'i at Hilo	June 30, 2003 *
		University of Oklahoma	March 25, 2010 *
South America	Brazil	Universidade de São Paulo	April 1, 2009 *
Africa	Nigeria	University of Nigeria, Ebonyi State University	January 30, 2009 *
	South Africa	University of Johannesburg	June 29, 2008 *
	Zambia	University of Zambia	March 18, 2011 *
		Copperbelt University	February 6, 2013 *

* indicates that an Academic Exchange Agreement and Memorandum of Understanding on Student Exchange exists

** indicates that only Memorandum of Understanding on Student Exchange exists

Data as of May 1, 2013

Memoranda Based on Inter-University Agreements (32 Memoranda in 10 Countries / Regions)				
Country	Counterparts		Exchange Content	Concluded
China	Institute of Mathematics, Fudan University	HU Graduate School of Science	Academic Exchange	January 1, 2004
	Peking University Library	HU University Library	Shared Use	April 1, 2005
	University of Science and Technology Beijing	HU Graduate School of Engineering	Academic Exchange	November 24, 2005
	Peking University Law School	HU Research Institute for Information Law and Policy	Academic Exchange	March 11, 2010
	School of Maths. & Statistics, Northeast Normal Univ.	HU Graduate School of Science	Double Degree Program	February 20, 2011
	Institute of Life Sciences, Zhejiang University	HU Grad. School of Env. Science, CENSUS	Strass Program, Student Exchange	February 21, 2011
	Dept of Mathematics, Southeast University	HU Graduate School of Science	Double Degree Program	March 9, 2011
	Dept. of Material Science and Engineering, Dept. of Engineering Physics, Dept. of Chemical Engineering, Tsinghua University	HU School and Graduate School of Engineering HU School and Graduate School Chemical Science and Engineering	Academic Exchange	March 20, 2012
Korea	College of Commerce and Ec. Yuengnam Univ.	HU Graduate School of Economics and Bus. Adm.	Academic Exchange	September 27, 2001
	College of Engineering, Chungbuk National Univ.	HU Graduate School of Engineering	Academic Exchange, student exchange	December 6, 2007
	Center for Space-Time Molecular Dynamics, Seoul National University	HU Institute of Low Temperature Science	Academic Exchange	June 30, 2009
	College of Business and Economics, Yonsei Univ.	HU Graduate School of Economics and Bus. Adm.	Joint Seminar	November 22, 2010
	College of Engineering, Seoul National Univ.	HU School of Eng, Graduate School of Eng, HU Grad. School of Information Science and Technology	Student Exchange, Internship,	January 17, 2011
			Double Degree Program	July 31, 2011
	College of Education, Korea Univ.	HU School of Education	Academic Exchange	October 31, 2011
	College of Fisheries Science, Pukyong National Univ.	HU Graduate School and School of Fisheries Science	Student Exchange	December 26, 2011
	College of Education, Kongju National University	HU Graduate School of Education	Student Exchange	February 7, 2012
Taiwan	Institute of Sociology, Academia Sinica	HU Graduate School of Letters	Academic Exchange	April 2, 2013
Thailand	School of Engineering and Technology, Asian Institute of Technology	HU Graduate School of Engineering	Double Degree Program	March 17, 2011
	School of Environment, Resources and Development, Asian Institute of Technology	HU Faculty of Fisheries Sciences	Shared Education	June 29, 2011
	Faculty of Engineering, Chulalongkorn University	HU Faculty, Graduate School and School of Engineering, HU Graduate School of Information Science and Tech., HU Graduate School of Chemical Sciences and Engineering	Internship	September 5, 2011
Germany	Faculty of Veterinary Medicine, Ludwig-Maximilians Universität München	HU Graduate School of Veterinary Medicine	Academic Exchange Student Exchange	January 10, 2011
Kazakhstan	Physico-Technical Faculty, Al-Farabi Kazakh National Univ.	HU School of Science	Double Degree Program	February 29, 2012
Poland	AGH University of Science and Technology	HU Graduate School of Engineering	Double Degree Program	July 6, 2010
		HU Graduate School of Chemical Sciences and Engineering		November 22, 2011
Switzerland	The Material Research Center, Swiss Federal Institute of Technology Zurich (ETH Zurich)	HU Graduate School of Engineering	Academic Exchange	March 4, 2008
Canada	Fisheries Centre, Univ. of British Columbia	HU Graduate School of Fisheries Sciences	Student Exchange	March 1, 2011
U.S.A.	School of Fisheries and Ocean Sciences, Univ. of Alaska, Fairbanks	HU School of Fisheries Science	Academic Exchange	September 12, 1986
	School of Education, Portland State Univ.	HU School of Education	Academic Exchange	December 12, 1989
	The Museum of the North, Univ. of Alaska	Hokkaido University Museum	Academic Exchange	November 1, 2005
	College of Veterinary Medicine, Cornell Univ.	HU College of Veterinary Medicine	Internship	March 25, 2013

Departmental Exchange Agreements (200 Agreements in 36 Countries / Regions)

Countries / Regions		Counterparts		Hokkaido University	Concluded
Asia	Bangladesh	Jahangirnagar University	Faculty of Mathematical and Physical Sciences	Faculty of Environmental Earth Science	January 26, 2012
	China	Peking Union Medical College		School of Medicine	July 14, 1994
					February 26, 1985
		Harbin Medical University	School of Stomatology		Graduate School of Dental Medicine
			No. 4 Clinical Medicine College	September 21, 2005	
		China Medical University	College of Stomatology	January 29, 2001	
		Shenyang University of Technology		Faculty of Engineering	June 24, 1985
		Shanghai Jiao Tong University	School of Engineering	Graduate School of Engineering	November 23, 1992
		Northeast Agricultural College		School of Agriculture	June 2, 1986
		Shenyang Agricultural University			November 5, 1986
		Northeast Forestry University			December 31, 1986
		Jilin University	Law School	Graduate School of Law	November 10, 1998
		Dalian Fisheries University		Graduate School of Fisheries Sciences, Faculty of Fisheries Sciences and School of Fisheries Sciences	September 15, 2000
		Chinese Academy of Social Sciences	Institute of East European,Russian and Central Asian Studies	Slavic Research Center	September 13, 1994
		China University of Petroleum	School of Chemical Engineering	Catalysis Research Center	December 7, 2001
		East China Normal University	Department of Chemistry		March 18, 2005
		Xiamen University	State Key Laboratory of Physical Chemistry of Solid Surfaces	Catalysis Research Center	October 9, 2007
		Chinese Academy of Science - Dalian Institute of Chemical Physics	State Key Laboratory of Catalysis		October 10, 2007
		Hebei Polytechnic University		Graduate School of Engineering	March 10, 2008
		The University of Hong Kong	Li Ka Shing Faculty of Medicine	Graduate School of Medicine and School of Medicine	January 30, 2008
		Harbin Engineering University	Engineering Faculty	Graduate School of Engineering, Graduate School of Chemical Sciences and Engineering	August 18, 2008
		East China University of Science and Technology	School of Law	Graduate School of Law	July 3, 2008
		Institute of Journalism and Communication, Chinese Academy of Social Sciences		Graduate School of International Media, Communication, and Tourism Studies	February 19, 2009
		Zhongnan University of Economics and Law	Law School	Graduate School of Law	March 6, 2009
		Nanjing Normal University	School of Law	Graduate School of Law	May 15, 2009
		Harbin Institute of Technology		Graduate School of Engineering	August 11, 2009
		Huazhong University of Science and Technology	School of Law	Graduate School of Law	October 26, 2009
		Heilongjiang Provincial Academy of Social Sciences		Slavic Research Center	June 14, 2010
		Renmin University of China	Law School Intellectual Property Institute	Graduate School of Law, School of Law	October 1, 2010
		Xian University of Architecture and Technology		Graduate School of Engineering	June 12, 2010
		Southeast University	Department of Mathmatics	Graduate School of Science	August 15, 2010
		Northeastern University		Graduate School of Engineering	March 9, 2011
		Forestry Research Science Institute of Heilongjiang Province		Field Science Center for Northern Biosphere	October 19, 2011
		Sichuan Agricultural University		Research Faculty of Agriculture, Graduate School of Agriculture and School of Agriculture	June 18, 2012
		Chinese Academy of Sciences	Northeast Institute of Geography and Agroecology		July 3, 2012
		Yunnan Agricultural University			July 26, 2012
		Instruction of Fujian Academy of Agricultural Sciences			November 13, 2012
		South China University of Technology		School of Light industry and Food Science	Faculty of Advanced Life Science
	India	Bharathidasan University	Department of Animal Science	Graduate School of Veterinary Medicine	August 23, 2010
	Indonesia	Institute of Technology Bandung	Faculty of Civil Engineering and Planning	Graduate School of Engineering	August 11, 2000
		Islamic University of Indonesia	Faculty of Civil Engineering and Planning	Faculty of Environmental Earth Science	December 11, 2008
		University of Palangka Raya		Center for Sustainability Science	November 5, 2009

Departmental Exchange Agreements (con't)

Countries / Regions		Counterparts		Hokkaido University	Concluded	
Asia	Indonesia	Sriwijaya University	Faculty of Agriculture	Research Faculty of Agriculture, Graduate School of Agriculture and School of Agriculture	September 23, 2010	
		Padjadjaran University	Faculty of Technique of Geology	The Hokkaido University Museum	February 24, 2011	
		Indonesian Institute of Sciences	Research Center for Biology		February 25, 2011	
		Diponegoro University Dr. Kariadi Hospital	Faculty of Medicine	Faculty of Health Sciences, Graduate School of Health Sciences	December 4, 2012	
	Korea	Chonnam National University	College of Agriculture	Graduate School of Agriculture	January 24, 2002	
			College of Fisheries and Ocean Science	Graduate School of Fisheries Sciences, Faculty of Fisheries Sciences and School of Fisheries Sciences	August 27, 2007	
		Kyungpook National University	College of Veterinary Medicine	Graduate School of Veterinary Medicine and School of Veterinary Medicine	December 19, 2000	
		Cheju National University	College of Ocean Science	Graduate School of Fisheries Sciences, Faculty of Fisheries Sciences and School of Fisheries Sciences	December 17, 2002	
		Gyeongsang National University	College of Marine Science		December 15, 2003	
		Kyung Hee University	College of Life Sciences	Field Science Center for Northern Biosphere	February 25, 2004	
		Kunsan National University	College of Ocean Science and Technology	Graduate School of Fisheries Sciences, Faculty of Fisheries Sciences and School of Fisheries Sciences	August 29, 2005	
		Kangnung National University	College of Life Science	Graduate School of Fisheries Sciences, Faculty of Fisheries Sciences and School of Fisheries Sciences	July 1, 2007	
		Korea University	Graduate School of Education	Information Initiative Center	July 23, 2009	
		Seoul Women's University	College of Natural Sciences	Research Faculty of Agriculture, Graduate School of Agriculture and School of Agriculture	June 11, 2010	
		University of Seoul	College of Humanities	Graduate School of Letters, Faculty of Letters	October 29, 2010	
			College of Urban Science			
			Graduate School			
		Kyung Hee University	College of Law	Graduate School of Law	March 29, 2011	
		University of Incheon	College of Engineering	Faculty of Engineering,	May 26, 2011	
			Urban Architecture Department	Graduate School of Engineering		
		Hansung University	College of Arts	Information Initiative Center	July 29, 2011	
		Hanyang University	College of Engineering	Faculty of Engineering, Graduate School of Engineering, School of Engineering	September 19, 2011	
		National Institute of Biological Resources			The Hokkaido University Museum	February 9, 2012
		Malaysia	University Pertanian Malaysia	Faculty of Fisheries and Marine Science	School of Fisheries Sciences	May 29, 1990
	International Islamic University Malaysia		Faculty of Engineering	Faculty of Engineering, Graduate School of Engineering, School of Engineering	November 12, 2012	
	Mongol	Institute of Geography of Mongolian Academy of Sciences		Faculty of Environmental Earth Science, and Research Faculty of Agriculture	February 18, 2009	
		Institute of Meteorology and Hydrology of National Agency For Meteorological,Hydrolorpgical and Environmental Monitoring			February 12, 2009	
		National University of Mongolia	Faculty of Biology		February 18, 2009	
			Nuclear Research Center	Graduate School of Science	September 21, 2010	
	Palaeontological Centre, Mongolian Academy of Science			The Hokkaido University Museum	August 15, 2011	
	Pakistan	University of Karachi	Faculty of Science	Faculty of Environmental Earth Science	September 29, 2008	
	Phillipines	University of the Philippines Diliman	College of Engineering	Graduate School of Information Science and Technology	April 28, 2010	
	Singapore	National University of Singapore	Faculty of Arts and Social Sciences	Graduate School of Letters	August 8, 2006	
	Taiwan	National Taiwan University	College of Social Science	Graduate School of Law, School of Law	January 28, 2000	
			College of Law		October 20, 2000	
		National Chengchi University	College of Law	Graduate School of Law, School of Law, Graduate School of Public Policy and Faculty of Public Policy		
			College of Social Sciences		July 28, 2005	
			College of International Affairs			
			Center for Aboriginal Studies	Center for Ainu and Indigenous Studies	October 18, 2007	

Departmental Exchange Agreements (con't)

Countries / Regions		Counterparts		Hokkaido University	Concluded
Asia	Taiwan	National Taiwan Normal University	Institute of Optoelectronics Science and Technology	Research Institute for Electronic Science	January 28, 2008
		National Taiwan Ocean University	College of Life Sciences	Graduate School of Fisheries Sciences, Faculty of Fisheries Sciences and School of Fisheries Sciences	August 20, 2008 *
		National University of Kaohsiung	College of Law	Graduate School of Law	March 11, 2008
		National Cheng Kung University	Sustainable Environment Research Center	Center for Sustainability Science	September 2, 2010 *
			Department of Environmental Engineering	Graduate School of Environmental Science	
			College of Science	Faculty of Science	October 4, 2011
		National Chio Tung University	College of Sciences	Research Institute for Electronic Science	January 24, 2011
		National Taipei University	Department of Public Administration and Policy	Faculty of Public Policy	September 27, 2011
		National Taiwan Normal University	Graduate Institute of Science Education	Faculty of Education	March 1, 2012
	Thailand	National Dong Hwa University	College of Environmental Studies	Faculty of Environmental Earth Science, Graduate School of Environmental Science	June 25, 2012
		Taipei Medical University	College of Medicine, College of Nursing, College of Public Health and Nutrition, College of Medical Science and Technology	Graduate School of Medicine, School of Medicine, Faculty of Health Sciences, Graduate School of Health Sciences	December 21, 2012
		Khon Kaen University	Faculty of Humanities and Social Sciences	Graduate School of Letters	November 30, 2004 *
		Southeast Asian Fisheries Development Center		Graduate School of Fisheries Sciences, Faculty of Fisheries Sciences and School of Fisheries Sciences	February 18, 2006
		Thammasat University	Sirindhorn International Institute of Technology	Faculty of Engineering, Graduate School of Engineering	May 15, 2007 *
		Chulalongkorn University	Faculty of Engineering		July 1, 2007 *
		National Telecommunications Commission		Graduate School of Information Science and Technology	July 1, 2007 *
		King Mongkut's Institute of Technology Ladkrabang	Faculty of Engineering		December 1, 2007 *
		Rajamangala University of Technology Thanyabur	Faculty of Science and Technology		July 17, 2008
		Agricultural Research Development Agency		Research Faculty of Agriculture Graduate School of Agriculture	March 24, 2009
		Walailak University	School of Agricultural Technology	Graduate School of Fisheries Sciences, Faculty of Fisheries Sciences and School of Fisheries Sciences	December 12, 2009 *
Oceania	Australia	The University of Queensland	Faculty of Health Sciences	Graduate School of Fisheries Sciences, and School of Fisheries Sciences	July 1, 2005
		Queensland University of Technology		Faculty of Engineering, Graduate School of Engineering, Graduate School of Information Science and Technology, Graduate School of Chemical Sciences and Engineering	August 6, 2012
Europe	Croatia	University of Zagreb	Faculty of Humanities and Social Sciences	Graduate School of Letters	February 18, 2009 *
		Charles University in Prague	First Faculty of Medicine	Graduate School of Medicine	September 8, 2008
	Czech	The University of South Bohemia		Graduate School of Fisheries Sciences, Faculty of Fisheries Sciences and School of Fisheries Sciences	June 29, 2010
	Denmark	The Royal Danish Academy of Fine Arts	School of Architecture	Graduate School of Engineering	March 31, 2010
		University of Copenhagen	Niels Bohr Institute	Institute of Low Temperature Science	January 25, 2012
		Aarhus University	School of Dentistry	Graduate School of Dental Medicine	November 12, 2012
	Finland	Tampere University of Applied Sciences		Graduate School of Engineering, Graduate School of Chemical Sciences and Engineering	January 12, 2011
	France	University of Poitiers	Faculty of Law	School of Law	October 15, 1993
		National Institute of Oriental Languages and Civilizations	Center of Russians and Eurasians Studies	Slavic Research Center	September 25, 1983
		École Pratique des Hautes Etudes		Graduate School of Letters	June 30, 2005
		École Normale Supérieure de Lyon		Research Institute for Electronic Science	March 26, 2010
		Musée Zoologique de la ville de Strasbourg		The Hokkaido University Museum	November 20, 2009
		École Nationale Supérieure de Mécanique et d'Aérotechnique		Graduate School of Engineering	January 18, 2011
		Unité de Catalyse et de Chimie du Solide, Université Lille 1 et École Centrale de Lille		Catalysis Research Center	January 17, 2011

Departmental Exchange Agreements (con't)

Countries / Regions		Counterparts		Hokkaido University	Concluded	
Europe	France	Ecole Supérieure des Technologies Industrielles Avancées		Graduate School of Information Science and Technology, Graduate School of Engineering	October 11, 2011	
		Centre National de Recherches Météorologiques		Institute of Low Temperature Science	March 26, 2012	
	Germany	Fritz-Haber-Institute of the Max-Planck-Society		Catalysis Research Center	December 26, 2005	
		Alfred Wegener Institute for Polar and Marine Research		Institute of Low Temperature Science	March 3, 2009	
		Max-Planck Institute for Marine Microbiology			March 4, 2009	
		Senckenberg Forschungsinstitute und Naturmuseen		The Hokkaido University Museum	November 18, 2009	
		Otto-von-Guericke-Universität Magdeburg	Faculty of Natural Science	Research Institute for Electronic Science	September 13, 2010	
		Max-Planck Institute for Terrestrial Microbiology		Institute of Low Temperature Science	January 19, 2012	
		GEOMAR Helmholtz Centre for Ocean Research Kiel		Faculty of Environmental Earth Science, Graduate School of Environmental Science	May 31, 2012	
		Free University of Berlin	Department of Veterinary Medicine	Graduate School of Veterinary Medicine	July 25, 2012	
		Hungary	Szent István University	Faculty of Agricultural Economics and Social Sciences	Graduate School of Agriculture	February 5, 2003
	Faculty of Agricultural and Environmental Management					
	Netherlands	Leiden University	Institute of East European Law and Russian Studies	Slavic Research Center	January 17, 1994	
		Vrije Universiteit Amsterdam	Faculty of Earth and Life Sciences	Faculty of Environmental Earth Science	December 13, 2010	
	Norway	University of Tromsø	Center for Sami Studies	Center for Ainu and Indigenous Studies	August 5, 2010	
	Poland	Warsaw School of Economics		School of Economics	March 14, 1989	
		Technical University of Lodz	Faculty of Textile Engineering	School of Science	March 19, 1992	
		Polish Academy of Sciences	Institute of Mathematics	Graduate School of Science	September 26, 2003	
			Institute of Catalysis and Surface Cheminsty	Catalysis Research Center	March 15, 2010	
		West Pomeranian University of Technology	Institute of Chemical and Environmental Engineering	Catalysis Research Center	March 17, 2010	
		Gdańsk University of Technology			March 18, 2010	
		University of Gdańsk			February 1, 2013	
		Spain	The Polytechnic University of Valencia	School of Architecture	Graduate School of Engineering	January 9, 2006
				School of Civil Engineering		
		Sweden	Göteborg University	School of Business, Economics and Law	Graduate School of Economics and Business Administration	October 28, 1996
	Linköping University		Institute of Technology	Graduate School of Engineering	August 24, 2000	
	Stockholm University		Faculty of Science	Institute of Low Temperature Science	September 20, 2010	
	U.K.	The University of Oxford, St. Antony's College	Russian and Eurasian Studies Center	Slavic Research Center	March 12, 2004	
		University of Leeds	Faculty of Education, Social Science and Law	Graduate School of Education	December 11, 2006	
		The University of Edinburgh	School of Veterinary Studies	Graduate School of Veterinary Medicine	July 24, 2009	
		The University of Manchester	Faculty of Humanities	Graduate School of Letters	December 9, 2009	
		Cardiff University	Cardiff Catalysis Institute	Catalysis Research Center	January 26, 2010	
	Kazakhstan	Kazakh National Pedagogical University	Institute of Magistracy & PhD Education	Graduate School of Science	November 19, 2009	
	Russia	Moscow State Pedagogical University		School of Education	August 3, 1995	
		Russian Academy of Sciences - Siberian Branch	Institute of Economics and Industrial Engineering	School of Economics and Business Administration	July 30, 1990	
			United Institute of Geology, Geophysics and Mineralogy	School of Science	March 10, 1992	
		Novosibirsk State University			June 18, 1993	
		Kazan State Power Engineering University	Institute of Economics and Social Technologies	Slavic Research Center	January 28, 2005	
		Russian Academy of Sciences	Institute of Oriental Studies		October 17, 2005	
			Institute of Slavic Studies		June 6, 2006	
		Sakhalin State Regional Museum		The Hokkaido University Museum	August 1, 2000	
		Russian Academy of Sciences - Siberian Branch	V.N. Sukachev Institute of Forest	Field Science Center for Northern Biosphere	March 12, 2005	
		Institute for Biological Problems of Cryolithozone, Siberian Branch of Russian Academy of Sciences		Faculty of Environmental Earth Science and Research Faculty of Agriculture	December 2, 2008	

Departmental Exchange Agreements (con't)

Countries / Regions		Counterparts		Hokkaido University	Concluded	
Europe	Russia	Far Eastern Geological Institute, Far Eastern Branch of Russian Academy of Sciences		Faculty of Environmental Earth Science	November 27, 2008	
		Yakutsk State University			December 3, 2008	
		Institute of the Indigenous Peoples of the North, Siberian Branch of Russian Academy Sciences			February 1, 2010	
		Melnikov Permafrost Institute, Siberian Branch of Russian Academy of Sciences			February 1, 2010	
		State Museum of Khabarovsk, named in honor of N. I. Grodekov		The Hokkaido University Museum	April 1, 2010	
		Nikolaevsk na Amure Municipal Museum			April 1, 2010	
		Arsenyev State Museum of Primorsky Region			April 1, 2010	
		North-Eastern Interdisciplinary Research Center, Far Eastern Branch of Russian Academy of Sciences			August 1, 2010	
		Kamchatka State Technical University			August 20, 2010	
		Tyumen State Oil and Gas University		Faculty of Environmental Earth Science	November 22, 2010	
		Tyumen Science Center, Russian Academy of Sciences				
		Irkutsk State Technical University		The Hokkaido University Museum	June 1, 2011	
		Russian Academy of Sciences	Institute of Russian Literature	Slavic Research Center	April 14, 2011	
		Kalmyk State University		Slavic Research Center	July 30, 2012	
		Far Eastern Hydrometeorological Research Institute		Institute of Low Temperature Science	March 27, 2013	
	Ukraine	Bogolyubov Institute for Theoretical Physics		Faculty of Science	March 30, 2002	
	North America	Canada	McMaster University	Michael G. DeGroote School of Business	Graduate School of Economics and Business Administration	October 15, 2001
Simon Fraser University			Graduate School of Science	May 10, 2008		
U.S.A.		University of Wisconsin	Law School	School of Law	June 1, 1999	
		Oregon Health and Sciences University	Dental School	School of Dental Medicine	January 1, 1974	
		University of Washington	College of Ocean and Fishery Sciences	School of Fisheries Sciences	June 24, 1988	
		University of Maryland	Center of Marine Biotechnology, Maryland Biotechnology Institute		December 23, 1989	
		University of Illinois at Chicago	The Graduate College	Graduate School of Environmental Earth Science	July 14, 1993	
		Harvard University	Davis Center for Russian and Eurasian Studies	Slavic Research Center	November 4, 1992	
		University of Delaware	Center for Catalytic Science and Technology	Catalysis Research Center	July 9, 2007	
		Univerisity of California, Los Angeles	California NanoSystems Institute	Research Institute for Electronic Science	June 10, 2008	
		Iowa State University	Institute for Physical Research and Technology	Catalysis Research Center	March 10, 2009	
		University of Massachusetts Medical School	Graduate School of Biomedical Sciences	Faculty of Advanced Life Science, Graduate School of Life Science	May 10, 2011	
		The Museum of Nature and Science, Dallas, Texas		The Hokkaido University Museum	August 23, 2011	
			Rice University	George R. Brown School of Engineering	Faculty of Engineering, Graduate School of Engineering, School of Engineering, Graduate School of Information Science and Technology, Graduate School of Chemical Sciences and Engineering	October 19, 2011
		South America	Brazil	The Federal University of Viçosa		Graduate School of Agriculture
Middle East	Turkey	Izmir University		Graduate School of Medicine, School of Medicine	October 24, 2011	
Africa	Zambia	University of Zambia	Samora Machel School of Veterinary Medicine	School of Veterinary Medicine	December 5, 1991	
	Egypt	Zagazig University	Faculty of Veterinary Medicine	Graduate School of Veterinary	March 6, 2012	
	Burkina Faso	International Institute for Water and Environmental Engineering		Graduate School of Engineering	January 26, 2010	
			Center for Sustainability Science	March 15, 2010		

* indicates Academic Exchange Agreement and Memorandum of Understanding on Student Exchange exist

Japanese Language Classes

General Japanese Course

The International Student Center (ISC) offers General Japanese classes for overseas students, teaching, and research staff.

Levels	Subjects		
Introductory	Grammar	Communication	Vocabulary/Kanji
Intermediate	Grammar	Communication	Vocabulary/Kanji
	Written Expression	Reading Comprehension	Listening Comprehension
Advanced	Grammar	Communication	Vocabulary/Kanji
	Written Expression	Reading Comprehension	Business Japanese

Levels and subjects:

Students are free to choose from the following according to their needs; however, class level will be determined on the basis of a placement test and on the amount of previous study of Japanese.

Eligibility:

The course is open to overseas students enrolled at Hokkaido University with a student visa (research students / kenkyusei, graduate students, special auditing students, and special research students) and overseas teaching and research staff. Auditors, undergraduate students, and credited auditors are not eligible to apply. Undergraduate students are only eligible to take the Business Japanese class.

Applications:

All applicants for the General Japanese Course should submit an application through the website (<http://www.oia.hokudai.ac.jp/current-students/japanese-language-support/what-class-is-right-for-me/>).

Intensive Japanese Course

*for Monbukagakusho Scholarship students, and self-financed / self-supported students

This course aims at helping Monbukagakusho Scholarship students at the graduate level and in teacher training programs develop an understanding and proficiency in the Japanese language before they enroll in graduate programs.

Classes offered:

Elementary Grammar, Elementary Conversation, Elementary Kanji, Elementary Reading Comprehension, Elementary Writing, and Elementary Listening Comprehension and Pronunciation

Length of course: 16 weeks

Eligibility:

This course is mainly for research students on Monbukagakusho scholarships recommended by Hokkaido University; however, privately-financed research students may also be admitted if there are vacancies.

Academic Japanese Course

The International Student Center (ISC) offers Academic Japanese classes for overseas students, teaching, and research staff as outlined below:

Objective:

This “cooperative active learning course” centers on exchanges between Japanese students and international students via course topics in order to increase vocabulary and understanding while heightening skills that are necessary in the University environment. As such, the course does not emphasize learning the Japanese language so much as concentrate on learning from one another. To this end, active and independent involvement is sought.

Eligibility:

Prospective students must fulfill the following two requirements:

- 1) Be officially enrolled in the University as either an international student (holders of international student visas: research students, graduate students, special auditing students, special research students); or have status as an international faculty member, or international researcher. Auditing students, credited auditors, and international undergraduate students can not apply; however, international undergraduate students can apply under General Education Seminar: Multicultural Exchange
- 2) Japanese language ability must be at advanced or above

Application and Placement Test Information:

Persons wishing to enroll in the Academic Japanese Course must take the placement test. To apply online, and for more information, please visit the following link: (<http://www.oia.hokudai.ac.jp/current-students/japanese-language-support/what-class-is-right-for-me/>).

General Education: Japanese Language and Affairs

*for Monbukagakusho Scholarship students

This credited class is offered to international students enrolled in a HU faculty that endeavor to raise their Japanese language ability beyond the University's Japanese language requirement.

Hokkaido University Hospital

Medical Clinical Division

Clinical Sections	Number of Beds	Number of Patients (2012 Fiscal Year)	
		Out-patients	In-patients
Internal Medicine I	44	24,743	15,935
Internal Medicine II	47	46,468	15,216
Gastroenterology and Hepatology	44	44,588	15,803
Cardiovascular Medicine	32	17,801	12,579
Hematology	36	11,591	12,337
Medical Oncology	5	3,126	5,147
Gastroenterological Surgery I	40	11,073	16,675
Gastroenterological Surgery II	22	3,320	9,522
Cardiovascular and Thoracic Surgery	24	6,497	11,299
Orthopedic Surgery	48	31,392	19,213
Urology	32	23,068	11,135
Anesthesiology	2	10,505	71
Plastic Surgery	25	6,903	8,391
Sports Medicine	6	3,049	1,431
Breast Surgery	6	7,670	1,495
Emergency Service	6	1,409	5,207
Neurological Medicine	16	16,304	8,528
Ophthalmology	32	39,563	11,872
Otolaryngology	32	18,390	13,287
Dermatology	22	19,373	7,972
Psychiatry & Neurology	72	47,796	22,397
Neurosurgery	32	10,962	12,197
Rehabilitation & Physical Medicine	20	43,192	4,469
Obstetrics	38	10,909	15,146
Gynecology	30	25,740	12,374
Pediatrics	40	17,630	13,012
Radiation Oncology	17	20,296	5,009
Diagnostic and Interventional Radiology	1	45,455	260
Nuclear Medicine	6	6,824	2,647
Intensive Care Unit	10	-	(3,553)
Neonatal Intensive Care Unit	9	-	(2,768)
High Qualified Clean Ward	5	-	(1,451)
Common bed	109	-	(9,577)
Total	910	575,637	290,626

*Figures in parentheses are inclusive of those for the above sections.

Dental Clinical Division

Clinical Sections	Number of Beds	Number of Patients (2012 Fiscal Year)	
		Out-patients	In-patients
Preventive Dentistry	26	6,800	0
Endodontics and Periodontics		34,610	0
Crown and Bridge Prosthodontics		13,555	0
Gerodontology		14,838	0
Dentistry for Children and Disabled Persons		9,071	0
Orthodontic		12,517	0
Restorative Dentistry		18,190	0
Removable Prosthodontists		21,263	0
Oral Medicine		18,914	3,236
Oral and Maxillofacial Surgery		19,467	5,504
Dental Radiology		2,582	0
Dental Anesthesiology		2,318	117
Center for Advanced Oral Medicine		7,267	6
Division for General Dentistry		2,906	0
Total	26	184,298	8,863

Clinical Sections	Number of Beds	Number of Patients (2012 Fiscal Year)	
		Out-patients	In-patients
Grand Total	936	759,935	299,489

Collections

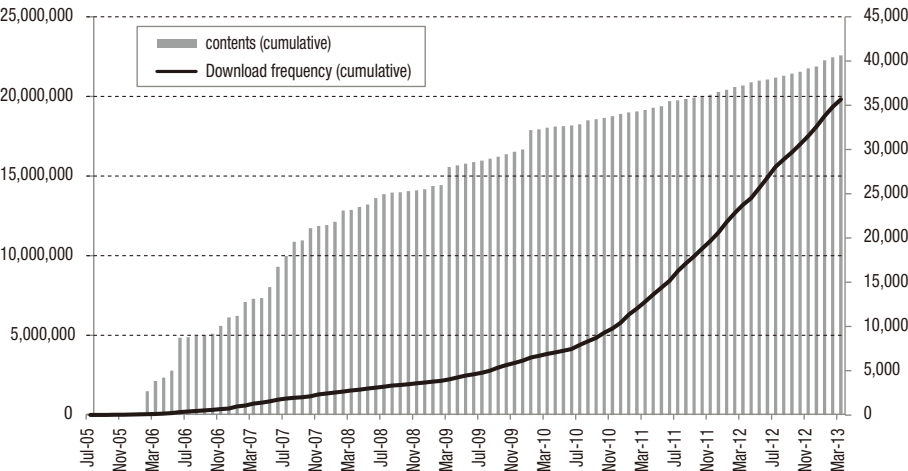
	Japanese Books	Foreign Books	Total	Journals
Central Library	920,401	796,923	1,717,324	32,229
North Library	244,030	111,820	355,850	1,738
Sub total	1,164,451	908,743	2,073,174	33,967

Collections by Department

Creative Research Institution	5	2	7	7
Center for Research and Development in Higher Education	3,824	996	4,820	178
Letters	193,043	123,690	316,733	5,191
Law	7,717	2,031	9,748	1,184
Economics and Business Education	9,341	4,353	13,694	1,508
Medicine	77,909	119,318	197,227	5,926
Dental Medicine	25,367	21,306	46,673	1,228
Veterinary Medicine	10,990	25,930	36,920	1,421
Information Science and Technology	13,597	18,974	32,571	831
Fisheries Sciences	77,395	55,606	133,001	5,099
Environmental Science / Environmental Earth Science	10,074	8,964	19,038	638
Science	43,985	175,976	219,961	4,193
Pharmaceutical Scienes and Pharmacy	6,687	3,627	10,314	290
Agriculture	145,044	109,536	254,580	8,264
Life Science / Advanced Life Science	74	94	168	24
Education	16,756	4,033	20,789	950
International Media, Communication, and Tourism Studies / Media and Communication	6,317	10,726	17,043	355
Health Sciences	32,680	4,552	37,232	936
Engineering	114,752	111,249	226,001	5,389
Public Policy	1	0	1	1
Institute of Low Temperature Science	11,515	25,100	36,615	1,717
Research Institute for Electronic Science	1,513	1,210	2,723	28
Institute for Genetic Medicine	516	380	896	27
Catalysis Research Center	4,134	16,239	20,373	456
Slavic Research Center	3,020	75,125	78,145	1,757
Information Initiative Center	0	0	0	59
Hokkaido University Museum	8,759	3,107	11,866	881
Field Science Center for Northern Biosphere	5,648	1,588	7,236	96
Hokkaido University Archives	1,615	2	1,617	0
Center for Ainu and Indigenous Studies	2,215	405	2,620	99
Total	1,998,924	1,832,862	3,831,786	82,700

* Includes the hospital and Central Institute of Isotope Science ** Includes the Research Center for Integrated Quantum Electronics Data as of March 31, 2013

HUSCAP(Hokkaido University Collection of Scholarly and Academic Papers) contents(cumulative)



Hokkaido University Museum

Number of visitors in 2012:97,899

Number of visitors in 2012: 97,899
 Number of visitors from1998 to 2012: 831,957

The Hokkaido University has over 4 million specimens, most of which are housed at the Hokkaido University Museum. Among our collection, more than 13,000 are type specimens, and over 10,000 of these are displayed in museum exhibits.

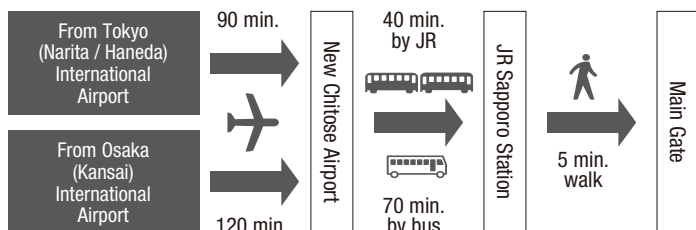
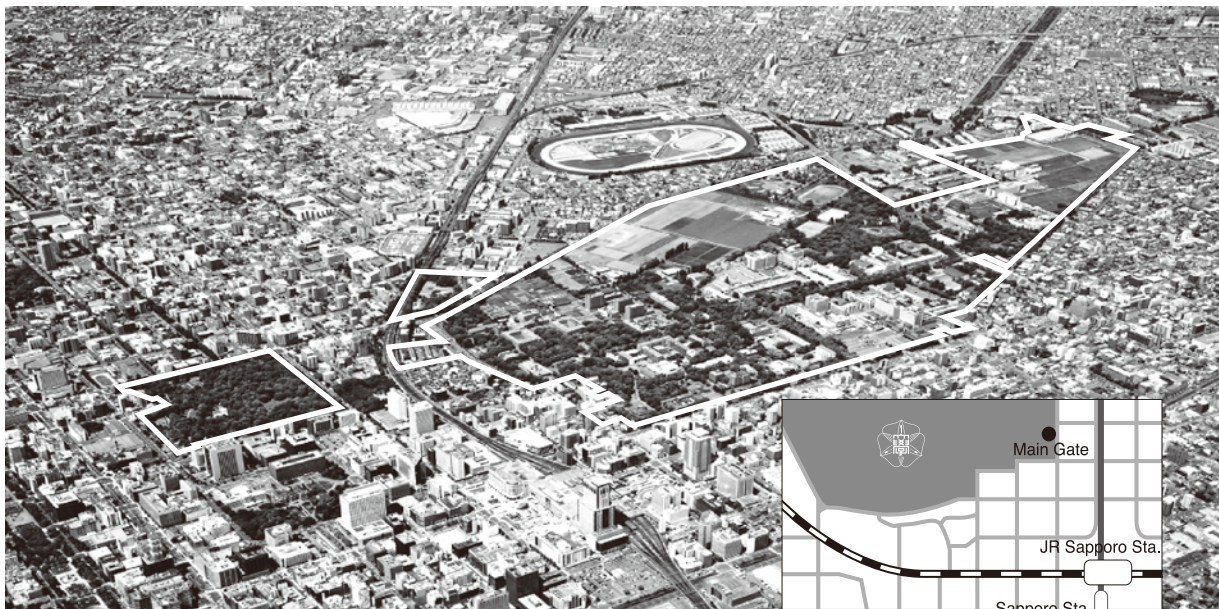
Collections / Documents	
Category (Abbreviations of collections)	Number of specimens
Herbarium (SAPS, SAPA)	570,000 (155,700)
Alga (SAP)	150,000 (30,000)
Entomology (SEHU)	1,800,000 (1,000,000)
Invertebrates(ZIHU)	85,000
Fish (HUMZ)	210,000
Paleontology (HUR)	62,003 (40,000)
Rock, ore, and core samples	177,181 (19,380)
Archaeology	24,000 (115,000)
Images	8,000
Scientific equipment	100
Paintings and writings	50
Moulage	267
Grand Total	3,086,601 (1,360,080)

* items in parenthesis are not sorted

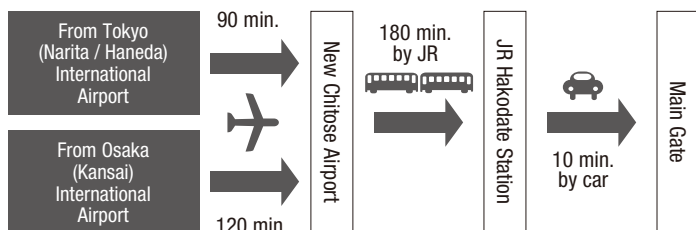
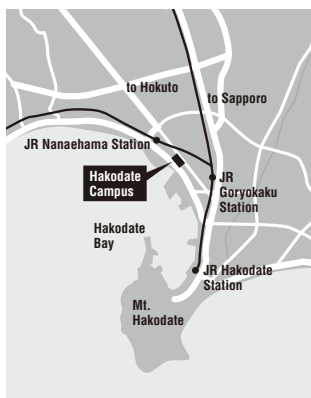


Campus

Sapporo Campus



Hakodate Campus



Contact Us

Administration and Planning

Administration Bureau

General Affairs and Planning Dept., Finance Dept.,
Research Promotion Dept., Facilities Dept.
Kita 8, Nishi 5, Kita-ku, Sapporo 060-0808

Academic Affairs Dept.

Student Support Division, Entrance Exam Division,
Admission Center

Kita 17, Nishi 8, Kita-ku, Sapporo 060-0817
Tel: +81-(0)11-706-7484 Fax: +81(0)11-706-7488
e-mail: ac-info@academic.hokudai.ac.jp
<http://www.hokudai.ac.jp/bureau/nyu/index.html>

Office of International Affairs

Kita 15, Nishi 8, Kita-ku, Sapporo 060-0815

Division of International Relations

Tel: +81-(0)11-706-8023 Fax: +81-(0)11-706-8036
e-mail: general@oia.hokudai.ac.jp

Division of International Services

Tel: +81-(0)11-706-8053 Fax: +81-(0)11-706-8067
e-mail: ryugaku@oia.hokudai.ac.jp

Graduate Schools, Faculties and Schools

Graduate School / Faculty of Letters

Kita 10, Nishi 7, Kita-ku, Sapporo 060-0810

Graduate School / Faculty of Law

Kita 9, Nishi 7, Kita-ku, Sapporo 060-0809

Graduate School /

School of Economics and Business Administration

Kita 9, Nishi 7, Kita-ku, Sapporo 060-0809

Faculty / Graduate School / School of Education

Kita 11, Nishi 7, Kita-ku, Sapporo 060-0811

Graduate School of International Media, Communication, and Tourism Studies / Research Faculty of Media and Comm.

Kita 17, Nishi 8, Kita-ku, Sapporo 060-0817

Graduate School / Faculty of Public Policy

Kita 9, Nishi 7, Kita-ku, Sapporo 060-0809

Graduate School / School of Medicine

Kita 15, Nishi 7, Kita-ku, Sapporo 060-8638

Graduate School / School of Dental Medicine

Kita 13, Nishi 7, Kita-ku, Sapporo 060-8586

Graduate School / School of Veterinary Medicine

Kita 18, Nishi 9, Kita-ku, Sapporo 060-0818

Hokkaido University Veterinary Teaching Hospital

Kita 19, Nishi 10, Kita-ku, Sapporo 060-0819

Faculty of Pharmaceutical Sciences /

School of Pharmaceutical Sciences and Pharmacy

Kita 12, Nishi 6, Kita-ku, Sapporo 060-0812

Graduate School / Faculty of Health Sciences

Kita 12, Nishi 5, Kita-ku, Sapporo 060-0812

Graduate School of Information Science and Technology

Kita 14, Nishi 9, Kita-ku, Sapporo 060-0814

Graduate School / School of Fisheries Sciences

3-1-1 Minato-cho, Hakodate 041-8611

Graduate School of Environmental Science /

Faculty of Environmental Earth Science

Kita 10, Nishi 5, Kita-ku, Sapporo 060-0810

Graduate School / Faculty / School of Science

Kita 10, Nishi 8, Kita-ku, Sapporo 060-0810

Graduate School / Research Faculty /

School of Agriculture

Kita 9, Nishi 9, Kita-ku, Sapporo 060-8589

Graduate School of Life Science

Kita 10, Nishi 8, Kita-ku, Sapporo 060-0810

School of Advanced Life Science

Kita 10, Nishi 8, Kita-ku, Sapporo 060-0810

Graduate School / Faculty / School of Engineering

Kita 13, Nishi 8, Kita-ku, Sapporo 060-8628

Graduate School of Chemical Sciences and Engineering

Kita 13, Nishi 8, Kita-ku, Sapporo 060-8628

Research Institutes and Centers

Institute of Low Temperature Science

Kita 19, Nishi 8, Kita-ku, Sapporo 060-0819

Research Institute for Electronic Science

Kita 20, Nishi 10, Kita-ku, Sapporo 001-0020

Institute for Genetic Medicine

Kita 15, Nishi 7, Kita-ku, Sapporo 060-0815

Catalysis Research Center

Kita 21, Nishi 10, Kita-ku, Sapporo 001-0021

Slavic Research Center

Kita 9, Nishi 7, Kita-ku, Sapporo 060-0809

Information Initiative Center(North and South Bldgs.)

Kita 11, Nishi 5, Kita-ku, Sapporo 060-0811

Central Institute of Isotope Science

Kita 15, Nishi 7, Kita-ku, Sapporo 060-0815

Research Center for Integrated Quantum Electronics

Kita 13, Nishi 8, Kita-ku, Sapporo 060-8628

Field Science Center for Northern Biosphere

Kita 11, Nishi 10, Kita-ku, Sapporo 060-0811

Meme Media Laboratory

Kita 13, Nishi 8, Kita-ku, Sapporo 060-8628

Research Center for Zoonosis Control

Kita 20, Nishi 10, Kita-ku, Sapporo 001-0020

Center for Advanced Tourism Studies

Kita 17, Nishi 8, Kita-ku, Sapporo 060-0817

Center for Ainu and Indigenous Studies

Kita 8, Nishi 6, Kita-ku, Sapporo 060-0808

Center for Experimental Research in Social Sciences

Kita 10, Nishi 7, Kita-ku, Sapporo 060-0810

Research Institute for Information Law and Policy

Kita 9, Nishi 7, Kita-ku, Sapporo 060-0809

Research Center for Environmental Nano and Bio Engineering

Kita 13, Nishi 8, Kita-ku, Sapporo 060-0828

Research Center for Integrative Mathematics

Kita 12, Nishi 7, Kita-ku, Sapporo 060-0812

Center of Education and Research for Topological Science and Technology

Kita 13, Nishi 8, Kita-ku, Sapporo 060-8628

Center for Environmental and Health Sciences

Kita 12, Nishi 7, Kita-ku, Sapporo 060-0812

Center for Translational Research

Kita 15, Nishi 6, Kita-ku, Sapporo 060-0815

Research and Education Center for Brain Science

Kita 15, Nishi 7, Kita-ku, Sapporo 060-0815

Center for Language Learning

Kita 17, Nishi 8, Kita-ku, Sapporo 060-0817

Center for Sustainability Science (CENSUS)

Kita 9, Nishi 8, Kita-ku, Sapporo 060-0809

