



HOKKAIDO
UNIVERSITY

2014-2015 Data Book

History	01
Organizational Structure	04
Number of Staff	06
Number of Students / Degrees Granted	08
International Student Numbers	09
International Academic Exchange	11
Inter-University Exchange Agreements	11
Memoranda Based on Inter-University Agreements	14
Departmental Exchange Agreements	15
Japanese Language Classes	20
Hokkaido University Hospital	21
Hokkaido University Library	22
Hokkaido University Museum	23
Campus Maps	24
Contact Information	25



HOKKAIDO
UNIVERSITY

Sapporo Agricultural College (1876–1907)

1876	7	Dr. William S. Clark, then president of the Massachusetts Agricultural College in the United States invited to be vice president of Sapporo Agricultural College. He arrives in Sapporo with two American professors, W. Wheeler and D. Penhallow, and eleven American students.
	8	Sapporo Agricultural College inaugurated. (Hokkaido University celebrates its anniversary of foundation on August 14.) Hirotake Chosho named president of Sapporo Agricultural College.
	12	Book-Stack Room (later College Library) opens.
1878	10	The martial arts training facility (current Sapporo Clock Tower) constructed.
1881	2	Genzo Mori, then Hokkaido development commissioner, acts also as college president.
1886	7	Botanical Garden constructed.
	12	Hideaki Sato named administrative officer of Hokkaido prefectural government and acting college president.
1887	3	Shosuke Sato named acting president.
1888	12	Bunzo Hashiguchi named president.
1891	8	Shosuke Sato named assistant president.
1894	4	Shosuke Sato named president.

Tohoku Imperial University (1907–1918)

1907	9	Sapporo Agricultural College becomes the Agricultural College of Tohoku Imperial University and adds preparatory courses. (It is inaugurated in September 1907.) Book-Stack Room renamed College Library. Shosuke Sato named dean of the Agricultural College of Tohoku Imperial University.
1909	2	Construction of the training ship Oshoro-maru

Hokkaido Imperial University (1918–1947)

1918	4	Agricultural College of Tohoku Imperial University transferred to the newly established Hokkaido Imperial University, becoming the Agricultural College of Hokkaido Imperial University. Shosuke Sato named president of Hokkaido Imperial University and dean of its Agricultural College.
1919	2	Agricultural College of Hokkaido Imperial University renamed the School of Agriculture in Hokkaido Imperial University. The School of Medicine established.
1921	4	The Medical Clinic attached to the School of Medicine established (becomes operational in November 1921).
1922	5	College Library renamed Hokkaido University Library.
1924	9	The School of Engineering established.
1930	4	The School of Science established.
	12	Takajiro Minami named president.
1933	12	Kumao Takaoka named president.
1937	12	Yutaka Kon named president.
1941	11	The Institute of Low Temperature Science established.
1943	2	The Institute of Catalysis Research established. The Institute of VHF Research established.
1945	7	The Administrative Office and the Student Affairs Office established.
	11	Seiya Ito named president.
1946	3	The Institute of VHF Research renamed the Institute of Applied Electronics Research.
1947	4	The School of Law and Letters established.

Hokkaido University (1947–2004)

1947	10	Hokkaido Imperial University renamed Hokkaido University.
1949	5	Under the National School Establishment Law, Hokkaido University reorganized into the new Hokkaido University with schools of law and letters, education, science, medicine, engineering, agriculture, and fisheries sciences (Hakodate). The Medical Clinic attached to the School of Medicine renamed the Hospital attached to the School of Medicine. Seiya Ito named president.
	6	The Department of Liberal Studies established (renamed the School of Liberal Studies in April 1951).
1950	3	Preparatory courses abolished.
	4	The Institute of Tuberculosis Research established. The School of Law and Letters divided into the School of Letters and the School of Law and Economics.
	10	Yoshichika Shima named president.
1952	4	The School of Veterinary Medicine established.
1953	4	New Graduate Schools of Letters, Education, Law, Economics and Business Administration, Science, Engineering, Agriculture, Veterinary Medicine, and Fisheries Sciences established.
	8	The School of Law and Economics divided into the School of Law and the School of Economics and Business Administration.
1954	10	Harusada Suginome named president.
1955	4	The Graduate School of Medicine established.
1957	7	The School of Liberal Studies renamed the School of Liberal Arts.
1958	4	The Graduate School of Pharmaceutical Sciences established.
1961	5	The Training Center for Engineering Teachers established (abolished in March 1969).
1965	4	The School of Pharmaceutical Sciences and Pharmacy established.
1966	10	Jiro Furuichi named president.
1967	2	Atae Abe named acting president upon the death of Jiro Furuichi.
	5	Juro Horiuchi named president.
	6	The School of Dental Medicine established.
	8	The Dental Hospital Attached to the School of Dental Medicine becomes operational.
1969	4	The Hokkaido University Library establishes the General Education Library.
1970	4	The Computer Center (joint-usage facility) established.
1971	5	Kichizo Niwa named president.
1972	5	The Health Management Center established. The Physical Education Center established.
1974	4	The Graduate School of Dental Medicine established.
	6	The Institute of Tuberculosis Research reorganized into the Institute of Immunological Research.
1975	5	Shigekazu Imamura named president.
1977	4	The Graduate School of Environmental Science (stand-alone graduate school) established.
1978	4	The Slavic Research Center established. The Central Institute of Isotope Science established.
1979	4	The Information Processing Education Center established. The Instrumental Analysis Center established.
1980	10	The College of Medical Technology established.

1981	4	The Institute of Language and Cultural Studies established. The Center for Experimental Plants and Animals established.
	5	Mikio Arie named president.
1985	4	The Research Center for Molecular Genetics established.
1987	5	Yoshio Ban named president.
1989	5	The Institute of Catalysis Research evolves into the Catalysis Research Center (joint-usage research facility).
1990	6	The Slavic Research Center designated as a joint-usage research facility.
1991	4	The International Student Center established.
		The Research Center for Quantum Interface Electronics established.
	5	Tsutomu Hiroshige named president.
1992	4	The Institute of Applied Electronics Research reorganized into the Research Institute for Electronic Science.
1993	4	The Graduate School of Environmental Science evolves into the Graduate School of Environmental Earth Science (stand-alone graduate school).
1994	6	The Center for Advanced Research of Energy established.
1995	4	The School of Liberal Arts abolished.
		The Center for Research and Development in Higher Education established.
		The Institute of Low Temperature Science designated as a joint-usage research facility.
		The Graduate School of Science and the Graduate School of Veterinary Medicine each evolves into a Graduate Research School, which places greater emphasis on graduate education and research.
		The Environmental Preservation Center established.
		The General Education Library renamed the North Branch Library.
	5	Norihito Tanbo named president.
1996	5	The Center for Advanced Science and Technology established.
	8	The Venture Business Laboratory established.
1997	4	The Graduate School of Engineering evolves into a Graduate Research School.
1998	4	The Graduate School of Pharmaceutical Sciences evolves into a Graduate Research School.
1999	4	The Graduate School of Agriculture evolves into a Graduate Research School.
		The Information Processing Education Center evolves into the Education and Research Center for Information and Media Studies.
		The Hokkaido University Museum established.
2000	4	Graduate Schools of Letters, Education, Law, Economics and Business Administration, Medicine, Dental Medicine, and Fisheries Sciences each evolves into a Graduate Research School.
		The Graduate School of International Media and Communication Studies (stand-alone graduate school) established.
		The Institute of Immunological Research reorganized into the Institute for Genetic Medicine (the Research Laboratory Attached to the School of Medicine abolished).
		The Center for Northern Eurasian and Northern Pacific Studies established.
2001	4	The Field Science Center for Northern Biosphere assumes the management of the following facilities: the Marine Biological Station and the Institute of Algological Research, formerly

		attached to the School of Science; botanical gardens, farms, forests, and ranches formerly attached to the School of Agriculture; Lake Toya Inland Water Station, Usujiri Fisheries Station, and Nanae Fresh Water Laboratory, formerly attached to the School of Fisheries Sciences.
		The expanded Center for Advanced Science and Technology assumes the management of the Chromosome Research Unit, which was formerly attached to the School of Science, the Center for Experimental Plants and Animals, and the Research Center for Molecular Genetics.
		The Research Center for Quantum Interface Electronics evolves into the Research Center for Integrated Quantum Electronics.
	5	Mutsuo Nakamura named president.
2002	2	The Creative Scientific Research Institution established.
	3	The new training ship Ushio-maru becomes operational (the old training ship Hokusei-maru decommissioned).
2003	4	The Computer Center and the Education and Research Center for Computing and Multimedia Studies evolves into the Information Initiative Center.
	9	The Research and Education Center for Brain Science established.
	10	The University Hospital attached to the School of Medicine and the Dental Hospital attached to the School of Dental Medicine integrated into the Hokkaido University Hospital.
		The Management Center of Intellectual Property established.
National University Corporation Hokkaido University (2004 to present)		
2004	4	Hokkaido University becomes the National University Corporation Hokkaido University.
		The Graduate School of Information Science and Technology (stand-alone graduate school) established.
		The Center for Advanced Research of Energy evolves into the Center for Advanced Research of Energy Conversion Materials.
2005	3	The Center for Northern Eurasian and Northern Pacific Studies abolished.
	4	The Faculty of Fisheries Sciences, the Faculty of Environmental Earth Science, the Graduate School of Fisheries Sciences, and the Graduate School of Environmental Science established. (The Department of Fisheries Sciences and the Department of Environmental Earth Science [stand-alone department] abolished in the graduate school.)
		The Graduate School of Public Policy (professional graduate school) and the Faculty of Public Policy established.
		The Center for Advanced Science and Technology and the Creative Scientific Research Institution integrated into the new Creative Scientific Research Institution.
		The Physical Education Center integrated into the Center for Research and Development in Higher Education.
		The Research Center for Zoonosis Control established.
	5	The Admission Center established.
		The Hokkaido University Archives established.
2006	4	The Faculty of Science, the Faculty of Pharmaceutical Sciences, the Research Faculty of Agriculture, the Faculty of Advanced Life Science, the Graduate School of Science, the Graduate School of Agriculture, and the Graduate School of Life Science established. (The Department of Science, the Department of Pharmaceutical Sciences, and the Department

		of Agriculture abolished in the graduate school.) The Center for Advanced Tourism Studies established.			Center, and Research Center for Zoonosis Control are recognized as joint usage research centers.
2007	3	The Education and Research Support Office established as an administrative unit. The College of Medical Technology abolished.		7	The Office of International Affairs established as an administrative unit, into which the International Student Center is transferred.
	4	The ICT Promotion Office established as an administrative unit. The Faculty of Education, the Research Faculty of Media and Communication, the Graduate School of Education, and the Graduate School of International Media, Communication and Tourism Studies established. (The Department of Education, the Department of International Media and Communication, and the Institute of Language and Cultural Studies abolished.) The Center for Language Learning established. The Center for Ainu and Indigenous Studies established. The Center for Experimental Research in Social Sciences established.		10	The Institute for the Advancement of Higher Education established as an administrative unit, into which the Center for Research and Development in Higher Education is transferred.
	5	Hiroshi Saeki named president.		11	The Office for a Sustainable Campus established as an administrative unit.
	10	The Management Center of Intellectual Property evolves into the Management Center for Intellectual Property and Innovation.	2011	3	The Office of Safety and Health established as an administrative unit.
2008	4	The Faculty of Health Sciences and the Graduate School of Health Sciences (for master's courses) established. The Research Institute for Information Law and Policy established. The Research Center for Environmental Nano and Bio Engineering established. The Research Center for Integrative Mathematics established. The Center for Sustainability Science established. The Admission Center, formerly a University education development center, evolves into an administrative unit.		4	The Center for Translational Research established. The Venture Business Laboratory renamed the Meme Media Laboratory. The Environmental Preservation Center transferred to the Office for a Sustainable Campus (an administrative unit). The training ship Oshoro-maru recognized as a joint usage educational facility.
2009	4	The Management Center for Intellectual Property and Innovation (an administrative unit) reorganized into the Center for Innovation and Business Promotion (an administrative unit). The Front Office for Resource Education and Development established as an administrative unit. The Center of Education and Research for Topological Science and Technology established. The Creative Scientific Research Institution and the Instrumental Analysis Center reorganized into the Creative Research Institution (an administrative unit).	2012	7	The Northern Forestry Research Development Office and the Aquatic Research Station (Akkeshi and Muroran Marine Stations) of the field Science Center for Northern Biosphere are recognized as joint usage educational facilities.
	8	The North Branch of the Hokkaido University Library renamed the North Library.	2013	4	Keizo Yamaguchi named president.
2010	4	The Faculty of Engineering and the Graduate School of Engineering established. The Graduate School of Chemical Sciences and Engineering established. The Graduate School of Health Sciences (for doctoral courses) established. The Center for Environmental and Health Sciences established. The Health Management Center evolves into the Health Care Center. The Center for Advanced Research of Energy Conversion Materials transferred to the Center for Advanced Research of Energy and Materials, attached to the Graduate School of Engineering. The Institute of Low Temperature Science, Research Institute for Electronic Science Institute for Genetic Medicine, Catalysis Research Center, Slavic Research Center, Information Initiative	2014	2	The Office for Enhancing Institutional Capacity established as an administrative unit.
				4	Center for Food and Medical Innovation established as an administrative unit. The Global Institution for Collaborative Research and Education (GI-CoRE) is established. The Slavic Research Center is re-named the Slavic-Eurasian Research Center. The Research Center for Environmental Nano and Bio Engineering is re-named the Center for Post-modern Socio-metabolic System.

General Organization

HOKKAIDO UNIVERSITY

GRADUATE SCHOOLS

Letters
Law
Economics and Business Administration
Medicine
Dental Medicine
Veterinary Medicine
Information Science and Technology
Fisheries Sciences
Environmental Science / Environmental Earth Science
Science
Agriculture
Life Science
Education
International Media, Communication, and Tourism Studies / Research Faculty of Media and Communication
Health Sciences
Engineering
Chemical Sciences and Engineering
Public Policy
Pharmaceutical Sciences
Advanced Life Science

The Advanced Institute for Law and Politics

Institute for Animal Experimentation

Veterinary Teaching Hospital

Institute of Seismology and Volcanology

Center for Genome Dynamics

Nuclear Reaction Data Centre

Research and Clinical Center for Child Development

Center for Advanced Research of Energy and Materials

Center for Public Policy Studies

Frontier Research Center for Post-Genome
Science and Technology

UNDERGRADUATE SCHOOLS

Letters
Education
Law
Economics and Business Administration
Science
Medicine
Dental Medicine
Pharmaceutical Sciences and Pharmacy
Engineering
Agriculture
Veterinary Medicine
Fisheries Sciences

Hokkaido University Hospital

Experimental Station for Medicinal Plant Studies

Training Ship "Oshoro-maru" **

Training Ship "Ushio-maru"

RESEARCH INSTITUTES

Institute of Low Temperature Science*
Research Institute for Electronic Science*
Institute for Genetic Medicine*

Pan-Okhotsk Research Center

Nanotechnology Research Center

Institute for Animal Experimentation

Center for Infection-Associated Cancer

Central Library

North Library

RESEARCH CENTERS

Catalysis Research Center*
Slavic-Eurasian Research Center*
Information Initiative Center*
Central Institute of Isotope Science
Hokkaido University Museum
Research Center for Integrated Quantum Electronics
Field Science Center for Northern Biosphere**
Meme Media Laboratory
Research and Education Center for Brain Science
Research Center for Zoonosis Control*
Hokkaido University Archives
Center for Advanced Tourism Studies
Center for Language Learning

Center for Ainu and Indigenous Studies

Center for Experimental Research in Social Sciences

Research Institute for Information Law and Policy

Center for Post-modern Socio-metabolic System

Research Center for Integrative Mathematics

Center for Sustainability Science

Center of Education and Research for Topological Science and Technology

Center for Environmental and Health Sciences

Center for Translational Research

Health Care Center

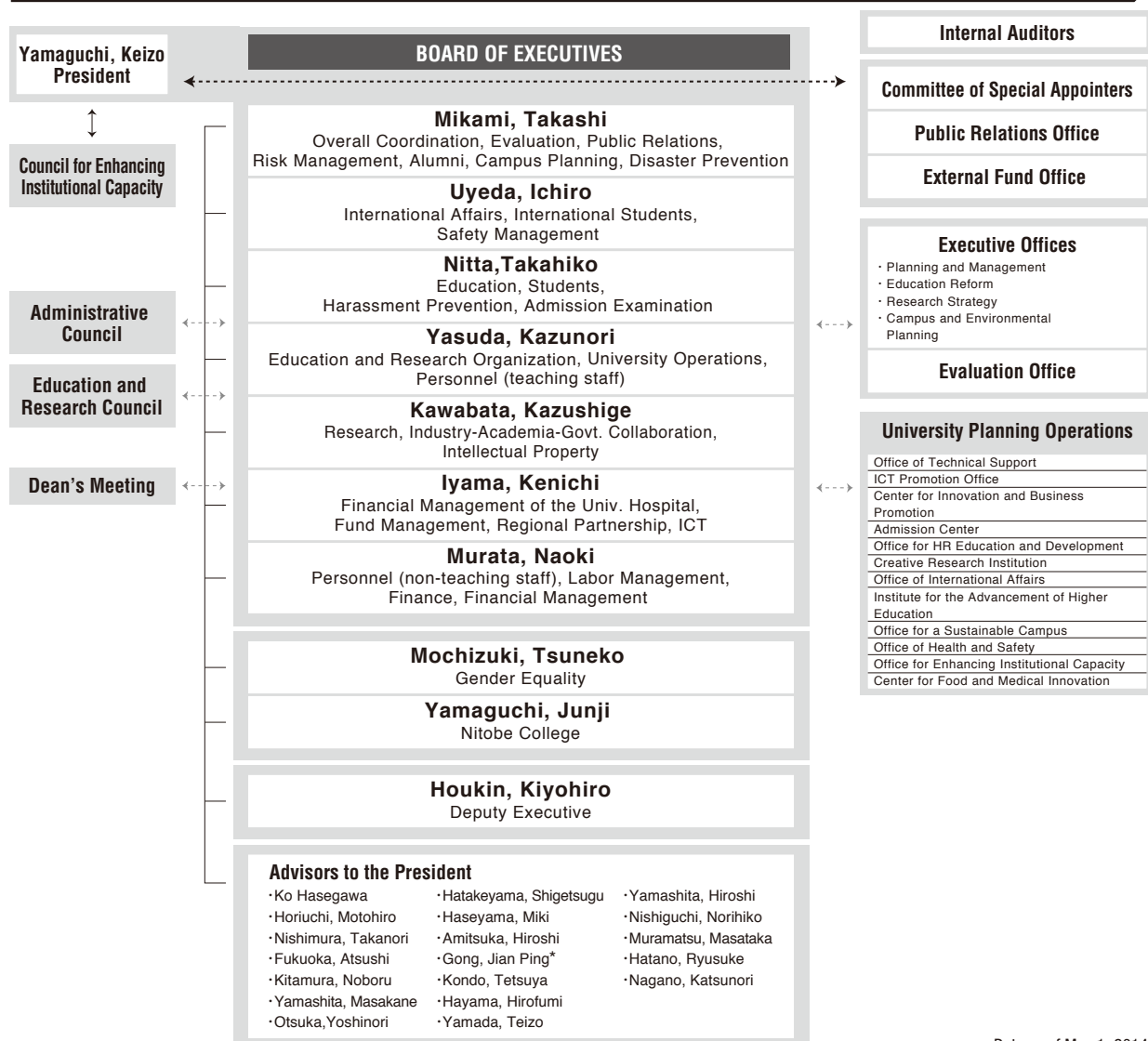
Global Institution for Collaborative Research and Education (GI-CoRE)

*Denotes joint usage research centers

**Denotes joint usage educational facilities

Data as of April 1, 2014

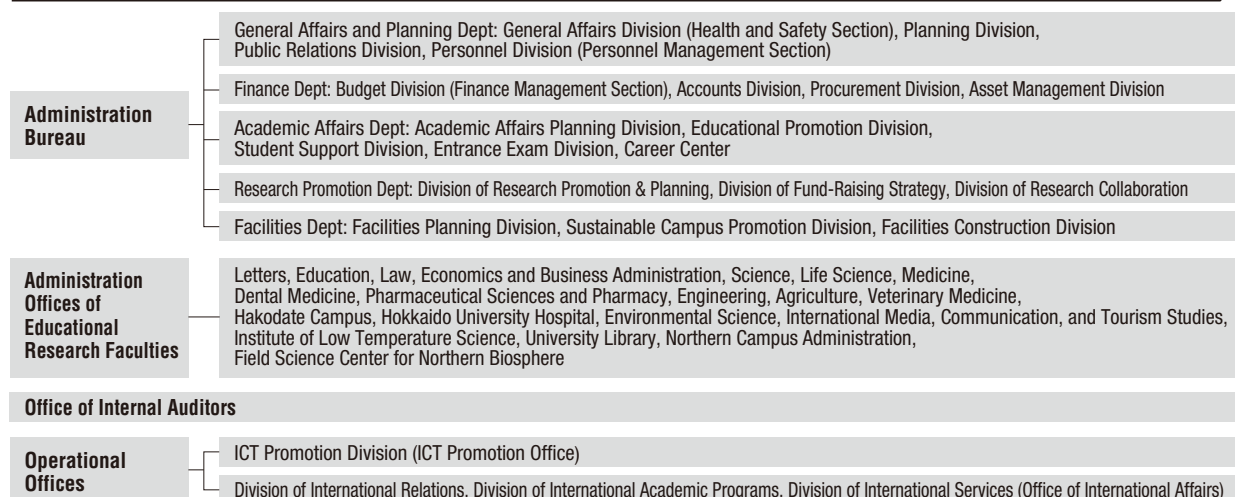
Governing Organization



*As of May 15, 2014

Data as of May 1, 2014

Administrative Organization



Data as of May 1, 2014

EXECUTIVE BOARD	President (1), 7 Executives (7), Internal Auditors (2)	Professors	Associate Professors	Lecturers	Assistant Professors	Research Associates	Specialist Staff	Administrative Staff	Technical Staff	TOTAL
GOVERNING ORGANIZATION STAFF	Technical Support Office	-	-	-	-	-	-	-	-	0
	Environmental Information Promotion Office	-	-	-	-	-	1	14	13	28
	Center for Innovation and Business Promotion	-	-	-	-	-	7	-	-	7
	Admission Center	-	-	-	-	-	-	-	-	0
	Front Office for Human Resource Education and Development	-	-	-	-	-	-	-	-	0
	Creative Research Institution	-	1	-	1	-	1	-	8	11
	Office of International Affairs	4	8	3	-	-	5	28	-	48
	Institute of Advancement of Higher Education	3	6	-	-	-	-	-	4	13
	Office for a Sustainable Campus	-	-	-	-	-	-	-	-	0
	Office of Health and Safety	-	1	-	-	-	1	-	-	2
	Office for Enhancing Institutional Capacity	-	-	-	-	-	-	-	-	0
	Center for Food and Medical Innovation	-	-	-	-	-	-	-	-	0
EDUCATIONAL RESEARCH ORGANIZATION STAFF	Letters	53	39	-	12	-	-	-	2	106
	Law	34	19	3	13	4	-	2	-	75
	Economics and Business Administration	23	20	-	6	-	2	-	-	51
	Medicine	42	28	14	60	3	-	-	13	160
	Dental Medicine	18	16	3	49	-	-	-	4	90
	Veterinary Science	16	14	2	15	-	-	-	3	50
	Information Science and Technology	41	37	-	18	-	-	-	-	96
	Fisheries Sciences	30	36	1	9	-	-	-	40	116
	Environmental Science / Environmental Earth Science	20	28	-	10	1	-	-	-	59
	Science	75	72	8	44	2	2	-	19	222
	Pharmaceutical Sciences	15	12	5	23	-	-	-	3	58
	Agriculture	47	41	24	11	-	-	-	11	134
	Life Science / Advanced Life Science	11	6	2	10	-	-	-	-	29
	Education	16	18	-	2	1	-	-	-	37
	International Media, Communication, and Tourism Studies	26	23	-	2	-	-	-	-	51
	Health Sciences	28	14	6	21	1	-	-	-	70
	Engineering	102	98	2	88	1	-	-	48	339
	Chemical Sciences and Engineering	-	-	-	-	-	-	-	-	0
	Public Policy	10	7	2	-	-	-	-	-	19
	Hokkaido University Hospital	5	14	54	85	-	-	-	653	811
	Institute of Low Temperature Science	14	12	1	19	-	-	-	9	55
	Research Institute of Electronic Science	16	13	-	21	-	-	-	10	60
	Institute of Genetic Medicine	8	5	3	12	-	-	-	7	35
	Catalysis Research Center	8	8	-	6	-	-	-	6	28
	Slavic-Eurasian Research Center	7	4	-	4	1	-	-	-	16
	Information Initiative Center	7	4	-	2	-	-	-	-	13
	Central Institute of Isotope Science	1	-	1	1	-	-	-	2	5
	The Hokkaido University Museum	2	3	2	2	-	-	-	-	9
	Research Center for Integrated Quantum Electronics	2	3	-	-	-	-	-	-	5
	Field Science Center for Northern Biosphere	15	15	-	9	-	-	-	72	111
	Meme Media Laboratory	-	-	-	-	-	-	-	-	0
	Research and Education Center for Brain Science	-	-	-	-	-	-	-	-	0
	Research Center for Zoonosis Control	6	1	1	2	-	-	-	2	12
	Hokkaido University Archives	-	-	-	1	-	-	-	1	2
	Center for Advanced Tourism Studies	3	1	-	-	-	-	-	-	4
	Center for Language Learning	-	-	-	-	-	-	-	-	0
	Center for Ainu and Indigenous Studies	1	5	-	1	-	-	-	-	7

EXECUTIVE BOARD		Professors	Associate Professors	Lecturers	Assistant Professors	Research Associates	Specialist Staff	Administrative Staff	Technical Staff	TOTAL
EDU. RESEARCH ORG. STAFF	Center for Experimental Research in Social Sciences	-	-	-	1	-	-	-	-	1
	Research Institute for Information Law and Policy	-	-	-	-	-	-	-	-	0
	Research Center for Post-modern Socio-metabolic System	-	-	-	-	-	-	-	-	0
	Research Center for Integrative Mathematics	-	-	-	-	-	-	-	-	0
	Center for Sustainability Science	1	-	-	-	-	-	-	-	1
	Center for Education and Research for Topological Sci. &Tech.	-	-	-	-	-	-	-	-	0
	Center for Environmental and Health Sciences	-	1	-	-	-	-	-	-	1
	Center for Translational Research	1	1	-	-	-	-	-	-	2
	Health Care Center	1	-	2	-	-	-	-	8	11
	Global Institution for Collaborative Research and Education (GI-CoRE)	(3)	-	-	1	-	-	-	-	1
ADMINISTRATIVE STAFF	General Affairs and Planning Department	-	-	-	-	-	-	70	1	71
	Finance Department	-	-	-	-	-	-	80	-	80
	Academic Affairs Department	-	-	-	-	-	-	64	-	64
	Research Promotion Department	-	-	-	-	-	-	37	1	38
	Facilities Department	-	-	-	-	-	-	9	25	34
	Graduate School of Letters / Faculty of Letters Office	-	-	-	-	-	-	15	-	15
	Faculty of Education Office	-	-	-	-	-	-	7	-	7
	Graduate School of Law / School of Law Office	-	-	-	-	-	-	19	-	19
	Economics and Business Administration Office	-	-	-	-	-	-	7	-	7
	Science / Life Sciences Office	-	-	-	-	-	-	41	2	43
	School of Medicine Office	-	-	-	-	-	-	38	2	40
	School of Dental Medicine Office	-	-	-	-	-	-	10	1	11
	School of Pharmaceutical Sciences and Pharmacy Office	-	-	-	-	-	-	11	-	11
	School of Engineering Office	-	-	-	-	-	-	67	4	71
	School of Agriculture Office	-	-	-	-	-	-	22	2	24
	School of Veterinary Medicine Office	-	-	-	-	-	-	13	-	13
	Hakodate Campus Office	-	-	-	-	-	-	22	4	26
	Office of Hokkaido University Hospital	-	-	-	-	-	-	115	6	121
	Graduate School of Environmental Science Office	-	-	-	-	-	-	12	-	12
	Int'l Media, Communication, and Tourism Studies Office	-	-	-	-	-	-	8	-	8
	Institute of Low Temperature Science Office	-	-	-	-	-	-	10	-	10
	University Library Office	-	-	-	-	-	-	91	-	91
	Northern Campus Administration	-	-	-	-	-	-	13	-	13
	Field Science Center for Northern Biosphere Office	-	-	-	-	-	-	18	-	18
	Office of Internal Auditors	-	-	-	-	-	-	5	-	5
	TOTAL		712	634	139	561	14	19	848	986

Data as of May 1, 2014

* Staff numbers in parenthesis () for the Global Institution for Collaborative Research and Education (GI-CoRE) indicate numbers of staff dedicated to this HU unit. The staff indicated are included in total staff numbers (Graduate School of Medicine / School of Medicine: 1; Research Center for Zoonosis Control: 2) .

Undergraduate Courses				
Faculties	Regular Students	Research Students	Auditors	TOTAL
Letters	655	28	69	752
Education	183	10	21	214
Law	697	-	11	708
Economics and Business Administration	631	9	15	655
Science	985	1	11	997
Medicine	1,164	-	2	1,166
Dental Medicine	261	2	-	263
Pharmaceutical Sciences and Pharmacy	320	2	1	323
Engineering	2,253	-	34	2,287
Agriculture	711	1	19	731
Veterinary Medicine	207	-	6	213
Fisheries Sciences	658	5	12	675
General Education	2,665	-	-	2,665
TOTAL	11,390	58	201	11,649

Graduate Courses						
Faculties	Regular Students			Research Students	Auditor	TOTAL
	Master's Course	Professional Course	Doctoral Course			
Letters	219	-	206	12	5	442
Law	33	135	48	10	16	242
Economics and Business Administration	65	40	30	2	3	140
Medicine	45	-	421	10	6	482
Dental Medicine	-	-	142	11	-	153
Veterinary Medicine	-	-	93	6	-	99
Information Science and Technology	387	-	183	7	-	577
Fisheries Science	217	-	70	-	4	291
Environmental Science	272	-	160	-	2	434
Faculty of Environmental Earth Science	-	-	-	5	-	5
Science	294	-	128	-	1	423
Faculty of Science	-	-	-	6	-	6
Faculty of Pharmaceutical Sciences	-	-	-	-	-	-
Agriculture	352	-	150	-	5	507
Research Faculty of Agriculture	-	-	-	5	-	5
Life Science	239	-	147	-	2	388
Faculty of Advanced Life Science	-	-	-	1	-	1
Education	109	-	95	-	4	208
Faculty of Education	-	-	-	4	-	4
Graduate School of Education	-	-	8	-	-	8
International Media, Communication, and Tourism Studies	109	-	74	-	2	185
Research Faculty of Media and Communication	-	-	-	15	-	15
Graduate School of Int'l Media, Communication and Tourism Studies	-	-	1	-	-	1
Health Sciences	90	-	45	-	-	135
Research Faculty of Health Sciences	-	-	-	6	-	6
Engineering	699	-	186	-	2	887
Faculty of Engineering	-	-	-	11	-	11
Graduate School of Engineering	-	-	13	-	-	13
Graduate School of Chemical Science and Engineering	311	-	136	-	-	447
Graduate School of Public Policy	-	78	-	-	1	79
Faculty of Public Policy	-	-	-	1	-	1
TOTAL	3,441	253	2,336	112	53	6,195

Institutes and Centers				
Institutes / Centers	Research Students, etc.	Institutes / Centers	Research Students, etc.	TOTAL
Institute of Low Temperature Science	1	Hokkaido University Museum	3	4
Information Initiative Center	1	Field Science Center for Northern Biosphere	1	2
Office of International Affairs	56	Center for Advanced Tourism Studies	2	58
Institute for the Advancement of Higher Education	1			1
TOTAL	59		6	65

Number of Degrees Granted		
Degrees	2014	Overall
Bachelor's Degrees	2,507	131,654
Master's Degrees	1,597	43,789
Professional Degrees	126	1,155
Doctorates	444	22,986
TOTAL	4,674	199,584

Data as of May 1, 2014

For international student numbers concerning faculty and course, see page 7 of the main Guidebook

International Student Numbers by Country / Region

AREA	COUNTRY	Letters	Law	Economics and Business	Medicine	Dental Medicine	Veterinary Medicine	Information Science and Technology	Fisheries Sciences	Environmental Science/Environmental Earth Science	Science	Pharmaceutical Sciences	Agriculture	Life Science / Advanced Life Science	Education	International Media, Comm. and Tourism Studies / Media and Comm.	Health Sciences	Engineering	Graduate School of Chemical Sciences and Engineering	Public Policy	Institute for the Advancement of Higher Education (First Year Education Division)	Field Science Center for Northern Biosphere	Center for Advanced Tourism Studies	International Student Center	Institute for the Advancement of Higher Education	TOTAL
Asia	Bangladesh	-	-	-	-	2	1	1	2	5	2	-	1	9	-	-	-	6	4	-	-	-	-	-	-	33
	Cambodia	-	-	-	-	-	-	-	-	1	-	-	-	-	-	-	-	2	-	-	-	-	-	1	-	3
	China	165	50	50	15	5	4	67	37	42	15	1	52	22	54	63	7	75	28	5	6	-	-	12	-	775
	India	-	-	-	-	-	-	-	2	3	1	-	-	9	-	-	-	1	5	-	-	-	-	1	-	22
	Indonesia	1	-	-	-	-	1	5	2	10	5	-	17	-	2	-	-	10	2	-	-	-	-	2	-	57
	Korea	34	6	4	1	1	4	6	7	4	4	-	28	1	2	4	-	35	3	3	8	-	-	1	-	156
	Laos	-	-	1	-	-	-	-	-	-	-	-	-	-	-	-	-	1	-	-	-	-	-	-	-	2
	Malaysia	-	-	-	1	-	1	-	2	1	-	-	3	-	-	-	-	7	-	-	5	-	-	-	-	20
	Mongolia	1	1	-	1	-	2	-	-	5	-	-	1	1	-	-	-	2	-	-	1	-	-	-	-	15
	Myanmar	-	-	-	-	-	-	-	-	-	-	-	5	-	-	-	-	-	-	1	-	-	-	1	-	7
	Nepal	-	-	-	3	-	3	1	-	3	1	-	-	-	-	-	-	3	-	-	-	-	-	-	-	14
	Pakistan	-	-	-	-	-	-	-	-	-	1	-	-	1	-	-	-	4	1	-	-	-	-	-	-	7
	Philippines	1	-	-	-	-	1	1	1	5	1	-	-	1	-	-	-	2	4	-	-	-	-	2	-	19
	Singapore	1	-	-	-	-	-	-	-	-	-	-	-	-	1	-	-	-	-	-	-	-	-	-	-	2
	Sri Lanka	2	-	-	-	-	1	-	-	-	1	-	-	-	-	-	-	6	-	-	-	-	-	-	-	10
	Taiwan	9	9	2	1	1	-	1	1	2	2	-	2	1	2	6	-	-	-	1	-	1	-	1	-	42
	Thailand	2	-	-	1	1	13	-	2	1	1	-	10	2	-	-	-	18	1	-	-	-	-	3	-	55
	Vietnam	-	-	-	-	-	1	1	-	-	2	-	3	-	-	2	-	2	-	-	-	-	-	2	-	13
Oceania	Australia	-	-	-	-	-	-	1	-	-	-	-	-	-	-	-	-	1	-	-	-	-	-	-	-	2
	New Zealand	1	-	-	-	-	-	-	-	-	-	-	-	-	-	-	-	-	-	-	-	-	-	-	-	1
	Papua New Guinea	-	-	-	1	-	-	-	-	-	-	-	-	-	-	-	-	-	-	-	-	-	-	-	-	1
	Solomon Is.	-	-	-	-	-	-	-	-	-	-	-	-	-	-	-	-	1	-	-	-	-	-	1	-	2
Europe	Azerbaijan	1	-	1	-	-	-	-	-	-	-	-	-	-	-	-	-	-	-	-	-	-	-	1	-	3
	Belarus	-	-	1	-	-	-	-	-	-	-	-	-	-	-	-	-	-	-	-	-	-	-	-	-	1
	Belgium	-	-	-	-	-	-	-	-	-	1	-	-	-	-	-	-	-	-	-	-	-	-	-	-	1
	Bosnia and Herzegovina	-	-	-	-	-	-	-	-	-	1	-	-	-	-	-	-	-	-	-	-	-	-	-	-	1
	Cyprus	-	-	1	-	-	-	-	-	-	-	-	-	-	-	-	-	-	-	-	-	-	-	-	-	1
	Finland	1	2	-	-	-	-	-	-	-	-	-	-	-	-	-	-	1	-	-	-	-	-	1	1	6
	France	1	1	-	-	-	-	2	-	1	-	-	-	-	-	1	-	2	-	-	-	-	-	-	-	8
	Germany	-	-	1	-	-	-	2	-	-	-	1	-	-	-	1	-	2	-	-	-	-	-	2	-	9
	Hungary	1	-	-	-	-	1	1	-	-	-	-	-	-	-	-	-	-	-	-	-	-	-	-	-	3
	Italy	2	-	-	-	-	-	-	-	-	-	-	-	-	-	-	-	1	-	-	-	-	-	-	-	3
	Kazakhstan	2	-	-	-	-	-	-	-	-	1	-	-	-	-	-	-	1	-	-	-	-	-	3	-	7
	Kyrgyzstan	-	-	1	-	-	-	-	-	-	-	-	-	-	-	-	-	-	-	-	-	-	-	-	-	1
	Poland	-	-	-	-	-	-	3	-	-	-	-	-	-	-	-	-	1	-	-	-	-	-	1	-	5
	Romania	-	-	-	-	-	-	-	-	-	-	-	-	-	-	-	-	-	-	-	-	-	-	1	-	1
	Russia	1	-	3	-	-	-	1	-	-	1	-	1	-	-	1	-	1	-	-	-	-	1	3	-	13
	Spain	-	-	-	-	-	-	-	-	-	-	-	-	1	-	-	-	1	-	-	-	-	-	-	-	2
	Switzerland	-	-	-	-	-	-	-	-	-	-	-	1	-	-	-	-	-	-	-	-	-	-	1	-	2
	Turkmenistan	-	-	-	-	-	-	-	-	-	-	-	-	-	-	-	-	-	-	-	-	-	-	1	-	1
	United Kingdom	3	2	-	-	-	1	-	-	-	-	-	-	-	1	-	-	-	-	-	-	-	-	1	-	8
	Uzbekistan	1	-	-	-	-	-	-	-	-	-	-	-	-	-	-	-	-	-	-	-	-	-	-	-	1

International Student Numbers by Country / Region (con't)

AREA	COUNTRY	Letters	Law	Economics and Business	Medicine	Dental Medicine	Veterinary Medicine	Information Science and Technology	Fisheries Sciences	Environmental Science / Environmental Earth Science	Science	Pharmaceutical Sciences	Agriculture	Life Science / Advanced Life Science	Education	International Media, Comm. and Tourism Studies / Media and Comm.	Health Sciences	Engineering	Graduate School of Chemical Sciences and Engineering	Public Policy	Institute for the Advancement of Higher Education (First Year Education Division)	Field Science Center for Northern Biosphere	Center for Advanced Tourism Studies	International Student Center	Institute for the Advancement of Higher Education	TOTAL
N. Am	Canada	-	-	1	-	-	-	-	-	-	1	-	2	-	-	-	-	-	-	-	-	-	-	-	-	4
	U.S.A.	5	-	3	-	-	1	-	-	1	-	-	-	-	1	-	-	1	-	-	-	-	-	2	-	14
Central and South America	Brazil	-	1	-	-	-	-	1	-	-	1	-	1	-	-	-	-	9	-	-	1	-	-	2	-	16
	Columbia	-	-	-	-	-	-	-	-	-	-	-	1	-	-	-	-	-	-	-	-	-	-	-	-	1
	Costa Rica	-	-	-	-	-	-	1	-	-	-	-	-	-	-	-	-	-	-	-	-	-	-	-	-	1
	Cuba	-	-	-	-	-	-	-	-	-	-	-	1	-	-	-	-	-	-	-	-	-	-	-	-	1
	Guatemala	-	-	-	-	-	-	-	-	-	-	-	-	-	-	-	-	1	-	-	-	-	-	-	-	1
	Guyana	-	-	-	-	-	-	-	-	1	-	-	-	-	-	-	-	-	-	-	-	-	-	-	-	1
	Honduras	-	-	-	-	-	-	-	-	1	-	-	-	-	-	-	-	-	-	-	-	-	-	-	-	1
	Jamaica	-	-	-	1	-	-	-	-	-	-	-	-	-	-	-	-	-	-	-	-	-	-	-	-	1
	Mexico	-	-	-	-	-	-	1	-	-	-	-	-	-	-	-	-	-	-	-	-	-	-	-	-	1
	Nicaragua	-	-	-	-	-	-	-	-	-	-	-	-	-	-	-	-	1	-	-	-	-	-	-	-	1
	Panama	-	-	-	-	-	-	-	-	-	-	-	-	-	-	-	-	-	-	-	-	-	-	-	-	1
	Peru	-	-	-	-	-	-	-	1	-	1	-	-	1	-	-	-	-	-	-	1	-	-	-	-	4
	Venezuela	1	-	-	-	-	-	-	-	-	-	-	-	-	-	-	-	-	-	-	-	-	-	-	-	1
Middle East	Iran	-	-	-	-	-	-	1	-	-	-	-	-	-	-	-	-	1	1	-	-	-	-	-	-	3
	Jordan	-	-	-	-	-	-	-	-	-	-	-	-	1	-	-	-	1	-	-	-	-	-	-	-	2
	Palestinian Authority	-	-	-	-	-	-	-	-	-	-	-	-	-	-	-	-	1	-	-	-	-	-	1	-	2
	Syria	-	-	-	-	-	-	2	-	-	-	-	-	-	-	-	-	-	-	-	-	-	-	-	-	2
	Turkey	1	-	-	-	-	-	-	-	-	-	-	-	-	-	-	-	-	-	-	-	-	-	-	-	1
Africa	Burkina Faso	-	-	-	-	-	-	-	-	-	-	-	-	-	-	-	-	2	-	-	-	-	-	1	-	3
	Central Africa	-	-	-	-	-	-	-	-	-	-	-	-	-	-	-	-	1	-	-	-	-	-	-	-	1
	Congo	-	-	1	-	-	-	-	-	-	-	-	-	-	-	-	-	-	-	-	-	-	-	-	-	1
	Egypt	-	-	-	4	-	7	1	-	1	2	-	-	2	-	-	-	2	1	-	-	-	-	-	-	20
	Eritrea	-	-	1	-	-	-	-	-	-	-	-	-	-	-	-	-	-	-	-	-	-	-	1	-	2
	Ethiopia	-	-	-	-	-	1	1	-	-	-	-	-	1	-	-	-	-	-	-	1	-	-	-	-	4
	Ghana	-	-	-	-	-	2	-	-	1	-	-	-	-	-	-	-	-	1	-	-	-	-	1	-	5
	Guinea	-	-	-	-	-	-	-	-	-	-	-	1	-	-	-	-	-	-	-	-	-	-	-	-	1
	Kenya	-	-	-	-	-	-	-	1	-	-	-	-	-	-	-	-	-	-	-	-	-	-	-	-	1
	Madagascar	-	-	1	-	-	-	-	-	1	-	-	-	-	-	-	-	-	-	-	-	-	-	1	-	3
	Mauritania	-	-	-	-	-	-	-	-	-	1	-	-	-	-	-	-	-	-	-	-	-	-	-	-	1
	Nigeria	-	-	-	1	-	1	-	-	2	-	-	1	-	1	-	-	-	-	-	-	-	-	-	-	6
	Tanzania	-	-	-	-	-	-	-	1	-	-	-	-	-	-	-	-	-	-	-	-	-	-	-	-	1
	Uganda	-	-	-	-	-	1	-	-	-	-	-	-	-	-	-	-	-	-	-	-	-	-	-	-	1
	Zambia	-	-	-	-	-	4	3	-	-	-	-	1	-	-	-	-	-	-	-	-	-	-	1	-	9
TOTAL (80 Countries / Regions)		237	73	71	30	10	51	104	59	90	46	2	133	53	64	78	7	206	51	10	23	1	1	55	1	1,456
International Student Numbers (other)		6	2	2	5	4	1	6	1	-	5	1	4	2	3(+1)	2	2	6	2	-	12	-	-	1	-	68

Data as of May 1, 2014

Distribution Map of Counterpart Universities

(includes University-wide and Department-wide)



Inter-University Exchange Agreements (145 Agreements, 151 Universities in 39 Countries / Regions)

Hokkaido University has concluded agreements for academic and educational exchange and cooperation with universities abroad as follows :

Countries / Regions	Counterparts	Concluded
Asia	Bangladesh	University of Dhaka
	China	University of Science and Technology Beijing
		Zhejiang University
		Peking University
		Fudan University
		Jilin University
		Nankai University
		Nanjing University
		Xi'an Jiaotong University
		Tsinghua University
		Northeast Normal University
		Sichuan University
		Wuhan University
		Dalian University of Technology
		Beijing Normal University
		Lanzhou University
		Southeast University
		Xiamen University
		Shanghai Ocean University
		Ocean University of China
		Chinese University of Hong Kong
		Northwest Agriculture and Forestry University
		Shanghai Jiao Tong University
		Huazhong University of Science and Technology
		Hunan University
	India	University of Delhi
	Indonesia	University of Palangka Raya
		Bogor Agricultural University
		Universitas Gadjah Mada
		Institut Teknologi Bandung
	Korea	Seoul National University
		Chonbuk National University
		Yeungnam University
		Pukyong National University
		Chungnam National University
		Kangwon National University
		Chungbuk National University
		Hankyong National University

* the exchange of students is included in the Exchange Agreement

Inter-University Exchange Agreements (con't)

Area	Country / Region	University	Concluded
Asia	Korea	Dong-eui University	April 23, 2009 *
		Korea Maritime University	June 3, 2010 *
		Korea University	October 15, 2010 *
		Yonsei University	December 6, 2010 *
		Kongju National University	August 2, 2011 *
		University of Incheon	April 16, 2012 *
		Hanyang University	July 10, 2012 *
		Sungkyunkwan University	December 27, 2012 *
		University of Seoul	September 23, 2013 *
	Malaysia	Universiti Sains Malaysia	June 7, 2010 *
	Mongolia	Mongolian State University of Agriculture	January 26, 2009 *
		National University of Mongolia	December 22, 2011 *
	Nepal	Tribhuvan University	October 24, 2010 *
	Phillipines	De La Salle University	January 11, 2009 *
	Sri Lanka	University of Peradeniya	November 14, 2006 *
	Taiwan	National Taiwan University	March 3, 2005 *
		Academia Sinica	September 11, 2008 *
		National Chung Cheng University	November 4, 2009 *
		TamKang University	November 29, 2010 *
		National Chung Hsing University	March 14, 2012 *
		National Tsing Hua University	August 17, 2012 *
		National Cheng Kung University	January 23, 2013 *
		National Chiao Tung University	March 22, 2013 *
		National Taiwan Normal University (Taiwan)	July 8, 2013 *
		National Taiwan Ocean University (Keelung)	April 23, 2014 *
	Thailand	Asian Institute of Technology	November 4, 2008 *
		Mahidol University	November 26, 2008 *
		Kasetsart University	January 6, 2009 *
		Chulalongkorn University	July 3, 2009 *
		King Mongkut's University of Technology Thonburi (Bangkok)	December 24, 2013 *
		Thammasat University (Bangkok)	January 30, 2014 *
	Vietnam	Vietnam National University Ho Chi Minh City	February 23, 2010 *
		VNU University of Science	March 1, 2013 *
		Can Tho University	March 1, 2013 *
		Vietnam National University Ho Chi Minh City University of Technology	March 1, 2013 *
Middle East	Saudi Arabia	King Abdulaziz University	July 8, 2010 *
Oceania	Australia	University of Tasmania	January 9, 2009 *
		Australian National University	June 14, 2012 *
		University of New South Wales	November 5, 2012 *
		University of Sydney	April 30, 2013 *
		University of the Sunshine Coast (Sunshine Coast)	August 19, 2013 *
		Murdoch University (Perth)	January 30, 2014 *
	New Zealand	University of Auckland	July 25, 2003 *
		GNS Science (Wellington)	February 28, 2014 *
Europe	Belgium	Ghent University (Ghent)	June 13, 2013 *
	Denmark	Aarhus University (Aarhus)	February 27, 2014 *
	Estonia	University of Tartu	October 28, 2008 *
	Finland	University of Oulu	December 11, 2001 *
		University of Helsinki	March 11, 2011 *
		University of Lapland	June 8, 2011 *
		Aalto University (Esbo)	July 5, 2013 *
	France	Université de Strasbourg	October 10, 2000 *
		For the Consortium of Universities of Grenoble:	October 10, 2000 *
		Université Joseph Fourier, Université Pierre Mendès France,	
		Université Stendhal, Institut National Polytechnique de Grenoble	
		Institut d'Etudes Politiques de Grenoble, Université de Savoie	

Data as of May 1, 2014

Inter-University Exchange Agreements (con't)			
Area	Country / Region	University	Concluded
Europe	France	Rennes Institute of Political Studies	September 4, 2002 *
		Fondation Nationale des Sciences Politiques	May 18, 2007 *
		École Polytechnique	June 29, 2008 *
		École Supérieure de Physique et de Chimie Industrielles de Paris	March 31, 2009 *
		Université de la Méditerranée (Aix-Marseille II)	May 18, 2009 *
	Germany	École Nationale Supérieure de Mécanique et d'Aérotechnique	March 25, 2013 *
		Ludwig-Maximilians-Universität München	January 31, 1983 *
		University of Bremen	February 11, 2010 *
		Technische Universität München	July 6, 2010 *
	Hungary	Universität Heidelberg	April 23, 2014 *
		Budapest University of Technology and Economics	November 4, 2004 *
	Italy	Politecnico di Torino	July 1, 2008 *
	Norway	University of Bergen	October 10, 2013 *
	Poland	AGH University of Science and Technology	July 6, 2010 *
	Romania	University of Bucharest	April 23, 2014 *
	Serbia	University of Belgrade	May 10, 2011 *
	Sweden	KTH Royal Institute of Technology	January 20, 2010 *
		Umeå University	August 20, 2013 *
	Switzerland	University of Geneva	June 7, 2005 *
		Swiss Federal Institute of Technology Zurich (ETH Zurich)	June 13, 2007 *
	U.K.	University of Warwick	January 5, 2000 *
		University of Sheffield	October 5, 2010 *
		University of Edinburgh	February 23, 2011 *
		New Castle University	March 1, 2013 *
		University of East Anglia (Norwich)	June 26, 2013 *
	Kazakhstan	Al-Farabi Kazakh National University	August 1, 2011 *
		Lomonosov Moscow State University	October 10, 2001 *
	Russia	Sakhalin State University	October 23, 2007 *
		Far Eastern National University	November 12, 2007 *
		Far Eastern Branch of the Russian Academy of Sciences	July 23, 2009 *
		Irkutsk State University	March 30, 2010 *
		North-Eastern Federal University	April 2, 2012 *
		Saint Petersburg State University	April 18, 2013 *
North America	Canada	University of Alberta	August 13, 1997 *
		University of British Columbia	June 29, 2008 *
		Dalhousie University	July 30, 2009 *
	U.S.A.	Portland State University	December 19, 1972 *
		University of Massachusetts	September 14, 1976 *
		Cornell University	June 16, 1982 *
		University of Alaska	December 20, 1986 *
		University of Wisconsin-Madison	April 21, 1987 *
		Ohio State University	September 1, 1998 *
		University of Oregon	August 17, 2006 *
		University of California, Los Angeles	June 29, 2008 *
		University of Hawaii at Manoa	June 30, 2003 *
		University of Hawaii at Hilo	June 30, 2003 *
		University of Oklahoma	March 25, 2010 *
South America	Brazil	Universidade de São Paulo	April 1, 2009 *
		Universidade Federal do Rio Grande do Sul (Porto Alegre)	November 8, 2013 *
Africa	Nigeria	University of Nigeria, Ebonyi State University	January 30, 2009 *
	South Africa	University of Johannesburg	June 29, 2008 *
		North-West University (Potchefstroom)	February 5, 2014 *
	Zambia	University of Zambia	March 18, 2011 *
		Copperbelt University	February 6, 2013 *

* indicates Academic Exchange Agreement and Memorandum of Understanding on Student Exchange exist.

© indicates only Memorandum of Understanding on Student Exchange exists.

Data as of May 1, 2013

Memoranda Based on Inter-University Agreements (38 Memoranda in 12 Countries)					
Countries / Regions	Counterparts		Hokkaido University	Exchange contents	Concluded
Asia	China	Institute of Mathematics, Fudan University	Graduate School of Science	Academic exchange	January 1, 2004
		Peking University Library	University Library	Shared use	April 1, 2005
		University of Science and Technology Beijing	Graduate School of Engineering	Academic exchange	November 24, 2005
		Peking University Law School	Research Institute for Information for Information Law & Policy	Academic exchange	March 11, 2010
		School of Mathematics and Statistics, Northeast Normal University	Graduate School of Science	Double degree program	February 20, 2011
		Institute of Life Sciences, Zhejiang University	Graduate School of Environmental Science, CENSUS	Strass program student exchange	February 21, 2011 *
		Department of Mathematics, Southeast University	Graduate School of Science	Double degree program	March 9, 2011
	Korea	Department of Material Science and Engineering, Department of Engineering Physics, Department of Chemical Engineering, Tsinghua University	School of Engineering, Graduate School of Engineering, Graduate School of Chemical Sciences and Engineering	Academic exchange	March 20, 2012
		College of Commerce and Economics, Yeungnam University	Graduate School of Economics and Business Administration	Academic exchange	September 27, 2001
		College of Engineering, Chungbuk National University	Graduate School of Engineering	Academic exchange, student exchange	December 6, 2007 *
		Center for Space-Time Molecular Dynamics, Seoul National University	Institute of Low Temperature Science	Academic exchange	June 30, 2009
		College of Business and Economics, Yonsei University	Graduate School of Economics and Business Administration	Joint seminar	November 22, 2010
		College of Engineering, Seoul National University	School of Engineering, Graduate School of Engineering, Graduate School of Information Science and Technology	Student exchange	January 17, 2011 ◎
		College of Engineering, Seoul National University		Internship	
		College of Engineering, Seoul National University		Double degree program	July 31, 2011
		College of Education, Korea University	School of Education	Academic exchange	October 31, 2011
		College of Fisheries Science, Pukyong National University	Graduate School of Fisheries Sciences and School of Fisheries Sciences	Student exchange	December 26, 2011 ◎
	Taiwan	College of Education, Kongju National University	Graduate School of Education	Student exchange	February 7, 2012 ◎
		Institute of Sociology, Academia Sinica	Graduate School of Letters	Academic exchange	April 2, 2013
		National Taiwan University Hospital	Hokkaido University Hospital	Academic exchange	February 12, 2014
		National Taiwan University	Graduate School of Chemical Sciences and Engineering, Graduate School of Environmental Science, Graduate School of Science, Graduate School of Life Science, Graduate School of Engineering	Student exchange	March 6, 2014
		College of Engineering			
	Thailand	School of Engineering and Technology, Asian Institute of Technology	Graduate School of Engineering	Double degree program	March 17, 2011
		School of Environment, Resources and Development, Asian Institute of Technology	Faculty of Fisheries Sciences	Shared education	June 29, 2011
		Faculty of Engineering, Chulalongkorn University	Faculty and Graduate School of Engineering, School of Engineering, Graduate School of Information Science and Technology, and Graduate School of Chemical Sciences and Engineering	Internship	September 5, 2011
		Kasetsart University Faculty of Engineering	Faculty of Engineering, Graduate School of Engineering, School of Engineering, Graduate School of Information Science and Technology, and Graduate School of Chemical Sciences and Engineering	Internship	February 21, 2014
Europe	Denmark	Aarhus University, Graduate School of Health, Department Dentistry	Graduate School of Dental Medicine	Double degree program	March 7, 2014
	Germany	Faculty of Veterinary Medicine, Ludwig-Maximilians-Universität München	Graduate School of Veterinary Medicine	Academic exchange, student exchange	January 10, 2011 *
	Kazakhstan	Physico-Technical Faculty, Al-Farabi Kazakh National University	Graduate School of Science	Double degree program	February 29, 2012
	Poland	AGH University of Science and Technology	Graduate School of Engineering	Double degree program	July 6, 2010
			Graduate School of Chemical Sciences and Engineering		November 22, 2011
	Russia	Russian Academy of Sciences, Institute of Biology and Soil Sciences	Faculty of Science	Academic exchange	October 14, 2013
		Russian Academy of Sciences, Institute of Oriental Studies	Institute of Low Temperature Science	Academic exchange	March 7, 2014
	Switzerland	The Material Research Center, Swiss Federal Institute of Technology Zurich (ETH Zurich)	Graduate School of Engineering	Academic exchange	March 4, 2008
North America	Canada	Fisheries Centre, University of British Columbia	Graduate School of Fisheries Science	Student exchange	March 1, 2011 ◎
	U.S.A	School of Fisheries and Ocean Sciences, University of Alaska Fairbanks	School of Fisheries Sciences	Academic exchange	September 12, 1986
		School of Education, Portland State University	School of Education	Academic exchange	December 12, 1989
		The Museum of the North, University of Alaska Fairbanks	The Hokkaido University Museum	Academic exchange	November 1, 2005
		College of Veterinary Medicine, Cornell University	College of Veterinary Medicine	Internship	March 25, 2013

* indicates Academic Exchange Agreement and Memorandum of Understanding on Student Exchange exist.

◎ indicates only Memorandum of Understanding on Student Exchange exists.

Departmental Exchange Agreements (220 Agreements in 40 Countries / Regions)					
Countries/Regions		Counterparts		Hokkaido University	Concluded
Asia	Bangladesh	Jahangirnagar University	Faculty of Mathematical and Physical Sciences	Faculty of Environmental Earth Science	January 26, 2012
		Peking Union Medical College		School of Medicine	July 14, 1994
	China	Harbin Medical University	School of Stomatology	Graduate School of Dental Medicine	February 26, 1985
			No. 4 Clinical Medicine College		June 5, 2000
		China Medical University	College of Stomatology	September 21, 2005	
		Shenyang University of Technology	School of Engineering	Faculty of Engineering	January 29, 2001
		Shanghai Jiao Tong University		Graduate School of Engineering	June 24, 1985
		Northeast Agricultural College		Faculty of Agriculture	November 23, 1992
		Shenyang Agricultural University			June 2, 1986
		Northeast Forestry University			November 5, 1986
		Jilin University	Law School	December 31, 1986	
				Graduate School of Law	November 10, 1998
		Dalian Fisheries University		Graduate School of Fisheries Sciences, Faculty of Fisheries Sciences and School of Fisheries Sciences	September 15, 2000
		Chinese Academy of Social Sciences	Institute of East European,Russian and Central Asian Studies	Slavic-Eurasian Research Center	September 13, 1994
		China University of Petroleum	School of Chemical Engineering	Catalysis Research Center	December 7, 2001
		East China Normal University	Department of Chemistry		March 18, 2005
		Xiamen University	State Key Laboratory of Physical Chemistry of Solid Surfaces	Catalysis Research Center	October 9, 2007
		Chinese Academy of Science - Dalian Institute of Chemical Physics	State Key Laboratory of Catalysis		October 10, 2007
		Hebei Polytechnic University		Graduate School of Engineering	March 10, 2008
		University of Hong Kong	Li Ka Shing Faculty of Medicine	Graduate School of Medicine and School of Medicine	January 30, 2008
		Harbin Engineering University	Engineering Faculty	Graduate School of Engineering, Graduate School of Chemical Sciences and Engineering	August 18, 2008
		East China University of Science and Technology	School of Law	Graduate School of Law	July 3, 2008
		Institute of Journalism and Communication, Chinese Academy of Social Sciences		Graduate School of International Media, Communication, and Tourism Studies	February 19, 2009
		Zhongnan University of Economics and Law	Law School	Graduate School of Law	March 6, 2009
		Nanjing Normal University	School of Law	Graduate School of Law	May 15, 2009
		Harbin Institute of Technology		Graduate School of Engineering	August 11, 2009
		Huazhong University of Science and Technology	School of Law	Graduate School of Law	October 26, 2009
		Heilongjiang Provincial Academy of Social Sciences		Slavic-Eurasian Research Center	June 14, 2010
		Renmin University of China	Law School	Graduate School of Law, School of Law	October 1, 2010
				Intellectual Property Institute	Faculty of Education, Graduate School of Education
					March 28, 2013
		Xian University of Architecture and Technology		Graduate School of Engineering	June 12, 2010
		Southeast University	Department of Mathematics	Graduate School of Science	August 15, 2010
		Northeastern University		Graduate School of Engineering	March 9, 2011
		Forestry Research Science Institute of Heilongjiang Province		Field Science Center for Northern Biosphere	October 19, 2011
		Sichuan Agricultural University			June 18, 2012
	Chinese Academy of Sciences	Northeast Institute of Geography and Agroecology	Research Faculty of Agriculture, Graduate School of Agriculture and Faculty of Agriculture	July 3, 2012	
	Yunnan Agricultural University			July 26, 2012	
	Instruction of Fujian Academy of Agricultural Sciences			November 13, 2012	
	South China University of Technology	School of Light industry and Food Science	Faculty of Advanced Life Science	December 20, 2012	
	Beijing Forestry University (Peking)			June 5, 2013	
	Southwest University (Chongqing)	College of Resources and Environment	Research Faculty of Agriculture, Graduate School of Agriculture and School of Agriculture	December 16, 2013	
	Inner Mongolia Agricultural University (Hohhot)	College of Agricultural		January 6, 2014	
	Chongqing University (Chongqing)	Faculty of Engineering	Faculty of Engineering, Graduate School of Engineering, School of Engineering	March 7, 2014	
	Wuhan University of Technology (Wuhan)	School of Mechanical and Electronic Engineering	Faculty of Engineering, Graduate School of Engineering, School of Engineering	March 28, 2014	
			School of Civil Engineering and Architecture		
	India	Bharathidasan University	Department of Animal Science	Graduate School of Veterinary Medicine	August 23, 2010
	Indonesia	Institute of Technology Bandung	Faculty of Civil Engineering and Planning	Graduate School of Engineering	August 11, 2000
		Islamic University of Indonesia	Faculty of Civil Engineering and Plannin	Faculty of Environmental Earth Science	December 11, 2008

* indicates Academic Exchange Agreement and Memorandum of Understanding on Student Exchange exist.

Departmental Exchange Agreements (con't)						
Countries/Regions		Counterparts		Hokkaido University	Concluded	
Asia	Indonesia	University of Palangka Raya		Center for Sustainability Science	November 5, 2009	
		Sriwijaya University	Faculty of Agriculture	Research Faculty of Agriculture, Graduate School of Agriculture and Faculty of Agriculture	September 23, 2010	
		Padjajaran University	Faculty of Technique of Geology	Hokkaido University Museum	February 24, 2011	
		Indonesian Institute of Sciences	Research Center for Biology		February 25, 2011	
		Diponegoro University Dr. Kariadi Hospital		Faculty of Medicine	School of Health Sciences, Graduate School of Health Sciences	December 4, 2012
	Korea	Chonnam National University	College of Agriculture	Graduate School of Agriculture	January 24, 2002	
			College of Fisheries and Ocean Science	Graduate School of Fisheries Sciences, Faculty of Fisheries Sciences and School of Fisheries Sciences	August 27, 2007	
		Kyungpook National University	College of Veterinary Medicine	Graduate School of Veterinary Medicine and School of Veterinary Medicine	December 19, 2000	
		Cheju National University	College of Ocean Science	Graduate School of Fisheries Sciences, Faculty of Fisheries Sciences and School of Fisheries Sciences	December 17, 2002	
		Gyeongsang National University	College of Marine Science		December 15, 2003	
		Kyung Hee University	College of Life Sciences	Field Science Center for Northern Biosphere	February 25, 2004	
		Kunsan National University	College of Ocean Science and Technology	Graduate School of Fisheries Sciences, Faculty of Fisheries Sciences and School of Fisheries Sciences	August 29, 2005	
		Kangnung National University	College of Life Science	Graduate School of Fisheries Sciences, Faculty of Fisheries Sciences and School of Fisheries Sciences	July 1, 2007	
		Korea University	Graduate School of Education	Information Initiative Center	July 23, 2009	
		Seoul Women's University	College of Natural Sciences	Research Faculty of Agriculture, Graduate School of Agriculture and Faculty of Agriculture	June 11, 2010	
		Kyung Hee University	College of Law	Graduate School of Law	March 29, 2011	
		University of Incheon	College of Engineering Urban Architecture Department	Faculty of Engineering, Graduate School of Engineering	May 26, 2011	
		Hansung University	College of Arts	Information Initiative Center	July 29, 2011	
		Hanyang University	College of Engineering	Faculty of Engineering, Graduate School of Engineering, School of Engineering	September 19, 2011	
		National Institute of Biological Resources		Hokkaido University Museum	February 9, 2012	
		Malaysia	University Pertanian Malaysia	Faculty of Fisheries and Marine Science	School of Fisheries Sciences	May 29, 1990
			International Islamic University Malaysia	Faculty of Engineering	Faculty of Engineering, Graduate School of Engineering, School of Engineering, Graduate School of Information Science and Technology, Graduate School of Chemical Science and Engineering	November 12, 2012
			Universiti Malaysia Sabah (Kota Kinabalu)	Institute for Tropical Biology and Conservation	Faculty of Environmental Earth Science, Graduate School of Environmental Science	February 5, 2014
		Mongolia	Institute of Geography of Mongolian Academy of Sciences		Faculty of Environmental Earth Science, and Research Faculty of Agriculture	February 18, 2009
			Institute of Meteorology and Hydrology of the National Agency for Hydrology, Meteorology, and Environmental Monitoring			February 12, 2009
	National University of Mongolia		Faculty of Biology Nuclear Research Center	February 18, 2009 September 21, 2010		
	Paleontological Center, Mongolian Academy of Science		Hokkaido University Museum	August 15, 2011		
	National Center for Zoonotic Diseases, Ministry of Health (Ulan Bator)		Graduate School of Veterinary Medicine	January 17, 2014		
	Myanmar	University of Veterinary Science (Yezin)		Graduate School of Veterinary Medicine	October 7, 2013	
	Pakistan	University of Karachi	Faculty of Science	Faculty of Environmental Earth Science	September 29, 2008	
	Philippines	University of the Philippines Diliman	College of Engineering	Graduate School of Information Science and Technology	April 28, 2010	
	Singapore	National University of Singapore	Faculty of Arts and Social Sciences	Graduate School of Letters	August 8, 2006	
			Faculty of Science	Faculty of Fisheries Sciences	March 24, 2014	
	Taiwan	National Taiwan University	College of Social Science	Graduate School of Law, School of Law	January 28, 2000	
			College of Law		October 20, 2000	
			National Chengchi University	College of Law	Graduate School of Law, School of Law, Graduate School of Public Policy and Faculty of Public Policy	July 28, 2005
		College of Social Sciences		Center for Aboriginal Studies Graduate School of Letters		October 18, 2007
		College of International Affairs			Center for Ainu & Indigenous Studies Graduate School of Letters	March 17, 2014
		Center for Aboriginal Studies		Center for Ainu & Indigenous Studies Graduate School of Letters		October 18, 2007
		College of Liberal Arts	Center for Ainu & Indigenous Studies Graduate School of Letters		March 17, 2014	
		National Taiwan Normal University		Institute of Optoelectronics Science and Technology	Research Institute for Electronic Science	January 28, 2008

* indicates Academic Exchange Agreement and Memorandum of Understanding on Student Exchange exist.

Departmental Exchange Agreements (con't)					
Countries/Regions		Counterparts		Hokkaido University	Concluded
Asia	Taiwan	National Taiwan Ocean University	College of Life Sciences	Graduate School of Fisheries Sciences, Faculty of Fisheries Sciences and School of Fisheries Sciences	August 20, 2008 *
		National University of Kaohsiung	College of Law	Graduate School of Law	March 11, 2008
		National Cheng Kung University	Sustainable Environment Research Center	Center for Sustainability Science, Graduate School of Environmental Science	September 2, 2010 *
			Department of Environmental Engineering		
		National Chiao Tung University	College of Science	Faculty of Science	October 4, 2011
			College of Sciences	Research Institute for Electronic Science	January 24, 2011
		National Taipei University	Department of Public Administration and Policy	Faculty of Public Policy	September 27, 2011
		National Taiwan Normal University	Graduate Institute of Science Education	Faculty of Education	March 1, 2012
		National Dong Hwa University	College of Environmental Studies	Faculty of Environmental Earth Science, Graduate School of Environmental Science	June 25, 2012 *
	Thailand	Taipei Medical University	College of Medicine, College of Nursing, College of Public Health and Nutrition, College of Medical Science and Technology	Graduate School of Medicine, School of Medicine	December 21, 2012 *
			College of Foreign Languages		
		Fu Jen Catholic University	College of Foreign Languages	Graduate School of Letters	February 25, 2014
		Khon Kaen University	Faculty of Humanities and Social Sciences	Graduate School of Letters	November 30, 2004 *
		Southeast Asian Fisheries Development Center		Graduate School of Fisheries Sciences, Faculty of Fisheries Sciences and School of Fisheries Sciences	February 18, 2006
		Thammasat University	Sirindhorn International Institute of Technology	Faculty of Engineering, Graduate School of Engineering	May 15, 2007 *
		National Telecommunications Commission		Graduate School of Information Science and Technology	July 1, 2007
		Agricultural Research Development Agency		Research Faculty of Agriculture, Graduate School of Agriculture	March 24, 2009
		Walailak University	School of Agricultural Technology	Graduate School of Fisheries Sciences, Faculty of Fisheries Sciences and School of Fisheries Sciences	December 12, 2009 *
Oceania	Australia	University of Queensland	Faculty of Health Sciences	Graduate School of Fisheries Sciences and Faculty of Fisheries Sciences	July 1, 2005
		Queensland University of Technology		Faculty of Engineering, Graduate School of Engineering, Graduate School of Information Science and Technology, Graduate School of Chemical Sciences and Engineering	August 6, 2012
Europe	Belgium	Katholieke Universiteit Leuven	Faculty of Science	Research Institute for Electronic Science	July 20, 2013
	Bulgaria	Trakia University (Stara Zagora)	Faculty of Agriculture	Faculty of Science, Graduate School of Science, School of Science	March 19, 2014 *
	Croatia	University of Zagreb	Faculty of Humanities and Social Sciences	Graduate School of Letters	February 18, 2009 *
	Czech	Charles University in Prague	First Faculty of Medicine	Graduate School of Medicine	September 8, 2008
		University of South Bohemia	Faculty of Fisheries and Protection of Waters	Graduate School of Fisheries Sciences, Faculty of Fisheries Sciences and School of Fisheries Sciences	June 29, 2010 *
	Denmark	Royal Danish Academy of Fine Arts	School of Architecture	Graduate School of Engineering	March 31, 2010 *
		University of Copenhagen	Niels Bohr Institute	Institute of Low Temperature Science	January 25, 2012
		Aarhus University	School of Dentistry	Graduate School of Dental Medicine	November 12, 2012
	Finland	Tampere University of Applied Sciences		Graduate School of Engineering, Graduate School of Chemical Sciences and Engineering	January 12, 2011 *
	France	University of Poitiers	Faculty of Law	School of Law	October 15, 1993
		National Institute of Oriental Languages and Civilizations	Center of Russians and Eurasians Studies	Slavic-Eurasian Research Center	September 25, 1983
		Ecole Pratique des Hautes Etudes		Graduate School of Letters	June 30, 2005
		Ecole Normale Supérieure de Lyon		Research Institute for Electronic Science	March 26, 2010
		Musée Zoologique de La Ville de Strasbourg		Hokkaido University Museum	November 20, 2009
		Ecole Nationale Supérieure de Mécanique et d'Aérotechnique		Graduate School of Engineering	January 18, 2011
		Unité de Catalyse et de Chimie du Solide, Université Lille 1 et Ecole Centrale de Lille		Catalysis Research Center	January 17, 2011
		Ecole Supérieure des Technologies Industrielles Avancées		Graduate School of Information Science and Technology, Graduate School of Engineering	October 11, 2011 *

* indicates Academic Exchange Agreement and Memorandum of Understanding on Student Exchange exist.

Departmental Exchange Agreements (con't)						
Countries/Regions		Counterparts		Hokkaido University	Concluded	
Europe	France	Centre National de Recherches Météorologiques		Institute of Low Temperature Science	March 26, 2012	
	Germany	Fritz-Haber-Institute of the Max-Planck-Society		Catalysis Research Center	December 26, 2005	
		Alfred Wegener Institute for Polar and Marine Research		Institute of Low Temperature Science	March 3, 2009	
		Max-Planck Institute for Marine Microbiology			March 4, 2009	
		Senckenberg Forschung Institute und Natur Museen		Hokkaido University Museum	November 18, 2009	
		Otto-Von-Guericke-Universität Magdeburg	Faculty of Natural Science	Research Institute for Electronic Science	September 13, 2010	
		Max-Planck Institute for Terrestrial Microbiology		Institute of Low Temperature Science	January 19, 2012	
		GEOMAR Helmholtz Centre for Ocean Research Kiel		Faculty of Environmental Earth Science , Graduate School of Environmental Science	May 31, 2012	
		Free University of Berlin	Department of Veterinary Medicine	Graduate School of Veterinary Medicine	July 25, 2012	
		Technischen Universität Berlin	Process Sciences	Faculty of Engineering, Graduate School of Engineering, School of Engineering	December 3, 2013	
			Electrical Engineering and Computer Science			
			Mechanical Engineering and Transport Systems			
		Christian-Albrechts-Universität zu Kiel	Faculty of Mathematics and Natural Sciences	Faculty of Science, Graduate School of Science	March 5, 2014	
		Universität Hamburg	Faculty of Mathematics, Informatics and Natural Sciences	Graduate School of Chemical Sciences, Faculty of Engineering, Graduate School of Engineering, Graduate School of Information Science and Technology	March 21, 2014	
	Hungary	Szent István University	Faculty of Agricultural Economics and Social Sciences	Graduate School of Agriculture	February 5, 2003	
			Faculty of Agricultural and Environmental Management			
	Nether lands	Leiden University	Institute of East European Law and Russian Studies	Slavic-Eurasian Research Center	January 17, 1994	
		Vrije Universiteit Amsterdam	Faculty of Earth and Life Sciences	Faculty of Environmental Earth Science	December 13, 2010	
	Norway	University of Tromso	Center for Sami Studies	Center for Ainu & Indigenous Studies	August 5, 2010	
	Poland	Warsaw School of Economics		Graduate School of Economics and Business Administration	March 14, 1989	
		Technical University of Lodz	Faculty of Textile Engineering	School of Science	March 19, 1992	
		Polish Academy of Sciences	Institute of Mathematics	Graduate School of Science	September 26, 2003	
			Institute of Catalysis and Surface Cheminsrty	Catalysis Research Center	March 15, 2010	
		West Pomeranian University of Technology	Institute of Chemical and Environ- mental Engineering	Catalysis Research Center	March 17, 2010	
		Gdansk University of Technology			March 18, 2010	
		University of Gdańsk			February 1, 2013	
		Spain	Polytechnic University of Valencia	School of Architecture	Graduate School of Engineering	January 9, 2006
				School of Civil Engineering		
		Sweden	Göteborg University	School of Business, Economics and Law	Graduate School of Economics and Business Administration	October 28, 1996
			Linköping University	Institute of Technology	Graduate School of Engineering	August 24, 2000
			Stockholm University	Faculty of Science	Institute of Low Temperature Science	September 20, 2010
		U.K	University of Oxford, St. Antony's College	Russian and Eurasian Studies Center	Slavic-Eurasian Research Center	March 12, 2004
	University of Leeds		Faculty of Education, Social Science and Law	Graduate School of Education	December 11, 2006	
	University of Edinburgh		School of Veterinary Studies	Graduate School of Veterinary Medicine	July 24, 2009	
	University of Manchester		Faculty of Humanities	Graduate School of Letters	December 9, 2009	
	Cardiff University		Cardiff Catalysis Institute	Catalysis Research Center	January 26, 2010	
	University of Oxford		Oxford Centre for Asian Archaeology, Art and Culture	Center for Ainu & Indigenous Studies	October 18, 2013	
	University of Glasgow		College of Science and Engineering	Research Institute for Electronic Science	November 20, 2013	
	Kazakhstan	Kazakh National Pedagogical University	Institute of Magistracy & PhD Education	Graduate School of Science	November 19, 2009	
	Russia	Moscow State Pedagogical University		School of Education	August 3, 1995	
		Russian Academy of Sciences - Siberian Branch	Institute of Economics and Industrial Engineering	Graduate School of Economics and Business Administration	July 30, 1990	
			United Institute of Geology, Geophysics and Mineralogy	School of Science	March 10, 1992	
		Novosibirsk State University			June 18, 1993	
		Kazan State Power Engineering University	Institute of Economics and Social Technologies	Slavic-Eurasian Research Center	January 28, 2005	
		Russian Academy of Sciences	Institute of Oriental Studies		October 17, 2005	
			Institute of Slavic Studies		June 6, 2006	
		Sakhalin State Regional Museum		Hokkaido University Museum	August 1, 2000	

* indicates Academic Exchange Agreement and Memorandum of Understanding on Student Exchange exist.

Departmental Exchange Agreements (con't)					
Countries/Regions		Counterparts		Hokkaido University	Concluded
Europe	Russia	Russian Academy of Sciences - Siberian Branch	V.N. Sukachev Institute of Forest	Field Science Center for Northern Biosphere	March 12, 2005
		Institute for Biological Problems of Cryolithozone, Siberian Branch of the Russian Academy of Sciences		Faculty of Environmental Earth Science and Research Faculty of Agriculture	December 2, 2008
		Far Eastern Branch of the Russian Academy of Sciences, Far Eastern Geological Institute		Faculty of Environmental Earth Science	November 27, 2008
		Yakutsk State University			December 3, 2008
		Institute of the Indigenous Peoples of the North, Siberian Branch of the Russian Academy of Sciences			February 1, 2010
		Melnikov Permafrost Institute, Siberian Branch of the Russian Academy of Sciences			February 1, 2010
		State Museum of Khabarovsk, named in honor of N. I. Gromyko		Hokkaido University Museum	April 1, 2010
		Nikolaevsk na Amure Municipal Museum			April 1, 2010
		Arseniyev State Museum of Primorsky Region			April 1, 2010
		North-Eastern Interdisciplinary Research Center, Far Eastern Branch of the Russian Academy of Sciences			August 1, 2010
		Kamchatka State Technical University		Faculty of Environmental Earth Science	August 20, 2010
		Tyumen State Oil and Gas University			November 22, 2010
		Tyumen Science Center, Russian Academy of Sciences			
		Irkutsk State Technical University		Hokkaido University Museum	June 1, 2011
		Russian Academy of Sciences	Institute of Russian Literature	Slavic-Eurasian Research Center	April 14, 2011
		Kalmyk State University		Slavic-Eurasian Research Center	July 30, 2012
		Far Eastern Hydrometeorological Research Institute		Institute of Low Temperature Science	March 27, 2013
	Ukraine	Bogolyubov Institute for Theoretical Physics		Faculty of Science	March 30, 2002
North America	Canada	McMaster University	Michael G. DeGroote School of Business	Graduate School of Economics and Business Administration	October 15, 2001 *
		Simon Fraser University		Graduate School of Science	May 10, 2008
	U.S.A	University of Wisconsin	Law School	School of Law	June 1, 1999
		Oregon Health and Sciences University	Dental School	School of Dental Medicine	January 1, 1974
		University of Washington	College of Ocean and Fishery Sciences	School of Fisheries Sciences	June 24, 1988
		University of Maryland	Center of Marine Biotechnology, Maryland Biotechnology Institute		December 23, 1989
		University of Illinois at Chicago	The Graduate College	Graduate School of Environmental Earth Science	July 14, 1993
		Harvard University	Davis Center for Russian and Eurasian Studies	Slavic-Eurasian Research Center	November 4, 1992
		University of Delaware	Center for Catalytic Science and Technology	Catalysis Research Center	July 9, 2007
		University of California, Los Angeles	California NanoSystems Institute	Research Institute for Electronic Science	June 10, 2008
		Iowa State University	Institute for Physical Research and Technology	Catalysis Research Center	March 10, 2009
		University of Massachusetts Medical School	Graduate School of Biomedical Sciences	Faculty of Advanced Life Science, Graduate School of Life Science	May 10, 2011 *
		Museum of Nature & Science, Dallas, Texas		Hokkaido University Museum	August 23, 2011
		Rice University	George R. Brown School of Engineering	Faculty of Engineering, Graduate School of Engineering, School of Engineering, Graduate School of Information Science and Technology, Graduate School of Chemical Sciences and Engineering	October 19, 2011
		University of Utah	Graduate School Nano Institute of Utah	Faculty of Environmental Earth Science	January 22, 2013
		Purdue University	College of Science	Catalysis Research Center	April 26, 2014
South America	Brazil	Federal University of Viçosa		Graduate School of Agriculture	May 10, 2001
Middle East	Turkey	Izmir University		Graduate School of Medicine, School of Medicine	October 24, 2011 *
Africa	Burkina Faso	International Institute for Water and Environmental Engineering		Graduate School of Engineering	January 26, 2010 *
				Center for Sustainability Science	March 15, 2010
	Egypt	Zagazig University	Faculty of Veterinary Medicine	Graduate School of Veterinary Medicine and School of Veterinary Medicine	March 6, 2012
	Ghana	Kwame Nkrumah University of Science and Technology	College of Science	Graduate School of Veterinary Medicine	July 26, 2013
	Zambia	University of Zambia	Samora Machel School of Veterinary Medicine	School of Veterinary Medicine	December 5, 1991

* indicates Academic Exchange Agreement and Memorandum of Understanding on Student Exchange exist.

General Japanese Course

The International Student Center (ISC) offers General Japanese classes for overseas students, teaching, and research staff.

Levels	Subjects		
Introductory	Grammar	Communication	Vocabulary / Kanji
Intermediate	Grammar	Communication	Vocabulary / Kanji
	Written Expression	Reading Comprehension	Listening Comprehension
Advanced	Grammar	Communication	Vocabulary / Kanji
	Written Expression	Reading Comprehension	Business Japanese

Levels and subjects:

Students are free to choose from the following according to their needs; however, class level will be determined on the basis of a placement test and on the amount of previous study of Japanese.

Eligibility:

The course is open to overseas students enrolled at Hokkaido University with a student visa (research students / kenkyusei, graduate students, special auditing students, and special research students) and overseas teaching and research staff. Auditors, undergraduate students, and credited auditors are not eligible to apply. Undergraduate students are only eligible to take the Business Japanese class.

Applications:

All applicants for the General Japanese Course should submit an application through the website (<http://www.oia.hokudai.ac.jp/current-students/japanese-language-support/what-class-is-right-for-me/>).

Intensive Japanese Course

*for Monbukagakusho Scholarship students, and self-financed / self-supported students

This course aims at helping Monbukagakusho Scholarship students at the graduate level and in teacher training programs develop an understanding and proficiency in the Japanese language before they enroll in graduate programs.

Classes offered:

Elementary Grammar, Elementary Conversation, Elementary Kanji, Elementary Reading Comprehension, Elementary Writing, and Elementary Listening Comprehension and Pronunciation

Length of course: 16 weeks

Eligibility:

This course is mainly for research students on Monbukagakusho scholarships recommended by Hokkaido University; however, privately-financed research students may also be admitted if there are vacancies.

Academic Japanese Course

The International Student Center (ISC) offers Academic Japanese classes for overseas students, teaching, and research staff as outlined below:

Objective:

This "cooperative active learning course" centers on exchanges between Japanese students and international students via course topics in order to increase vocabulary and understanding while heightening skills that are necessary in the University environment. As such, the course does not emphasize learning the Japanese language so much as concentrate on learning from one another. To this end, active and independent involvement is sought.

Eligibility:

Prospective students must fulfill the following two requirements:

- 1) Be officially enrolled in the University as either an international student (holders of international student visas: research students, graduate students, special auditing students, special research students); or have status as an international faculty member, or international researcher. Auditing students, credited auditors, and international undergraduate students can not apply; however, international undergraduate students can apply under General Education Seminar: Multicultural Exchange
- 2) Japanese language ability must be at advanced or above

Application and Placement Test Information:

Persons wishing to enroll in the Academic Japanese Course must take the placement test. To apply online, and for more information, please visit the following link: (<http://www.oia.hokudai.ac.jp/current-students/japanese-language-support/what-class-is-right-for-me/>).

General Education: Japanese Language and Affairs

*for Monbukagakusho Scholarship students

This credited class is offered to international students enrolled in a HU faculty that endeavor to raise their Japanese language ability beyond the University's Japanese language requirement.

Medical Clinical Division			
Clinical Sections	Number of Beds	Number of Patients (2013 Fiscal Year)	
		Out-patients	In-patients
Internal Medicine I	44	23,572	14,946
Internal Medicine II	47	46,716	15,817
Gastroenterology and Hepatology	44	42,639	15,365
Cardiovascular Medicine	32	15,684	12,787
Hematology	36	11,350	12,561
Medical Oncology	5	2,883	5,532
Gastroenterological Surgery I	40	10,128	16,516
Gastroenterological Surgery II	22	3,432	9,636
Cardiovascular and Thoracic Surgery	24	5,878	10,725
Orthopedic Surgery	48	28,259	19,272
Urology	32	22,916	11,534
Anesthesiology	2	10,740	42
Plastic Surgery	25	7,160	7,977
Sports Medicine	6	3,279	1,745
Breast Surgery	6	7,632	1,833
Emergency Service	6	1,066	4,458
Neurological Medicine	16	15,554	8,057
Ophthalmology	32	40,260	11,324
Otolaryngology	32	17,380	13,237
Dermatology	22	16,493	7,849
Psychiatry & Neurology	72	48,718	21,602
Neurosurgery	32	9,874	13,423
Rehabilitation & Physical Medicine	20	43,738	1,970
Obstetrics	38	10,415	16,166
Gynecology	30	25,873	11,983
Pediatrics	40	17,920	14,773
Radiation Oncology	17	18,815	6,208
Diagnostic and Interventional Radiology	1	45,794	261
Nuclear Medicine	6	6,744	3,054
Intensive Care Unit (ICU)	10	-	(3,420)
Neonatal Intensive Care Unit (NICU)	9	-	(2,908)
Growing Care Unit (GCU)	11	-	(3,064)
Maternal Fetal Intensive Care Unit (MFICU)	3	-	(600)
High Qualified Clean Ward	5	-	(1,361)
Common bed	95	-	(9,322)
TOTAL	910	560,912	290,653

*Figures in parentheses are inclusive of those for the above sections.

Dental Clinical Division			
Clinical Sections	Number of Beds	Number of Patients (2013 Fiscal Year)	
		Out-patients	In-patients
Preventive Dentistry	26	6,530	6,932
Endodontics and Periodontics		32,169	
Crown and Bridge Prosthodontics		10,996	
Gerodontology		14,547	
Dentistry for Children and Disabled Persons		9,421	
Orthodontic		12,945	
Restorative Dentistry		16,980	
Removable Prosthodontists		19,840	
Oral Medicine		17,266	
Oral and Maxillofacial Surgery		18,973	
Dental Radiology		2,865	
Dental Anesthesiology		2,050	
Center for Advanced Oral Medicine		6,343	
Division for General Dentistry		2,513	
TOTAL	26	173,438	6,932

Clinical Sections	Number of Beds	Number of Patients (2013 Fiscal Year)	
		Out-patients	In-patients
GRAND TOTAL	936	734,350	297,585

Collections

	Japanese Books	Foreign Books	TOTAL	Journals
Central Library	1,002,933	825,696	1,828,629	31,810
North Library	249,158	114,170	363,328	1,740
SUBTOTAL	1,252,091	939,866	2,191,957	33,550

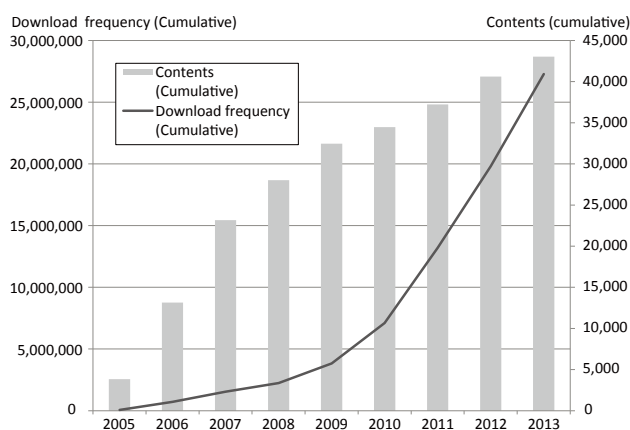
Collections by Department

Creative Research Institution	4	3	7	7
Center for Research and Development in Higher Education	3,904	994	4,898	179
Letters	131,666	120,421	252,087	5,203
Law	7,772	2,017	9,789	1,172
Economics and Business Education	9,472	4,628	14,100	1,249
Medicine	54,751	96,692	151,443	5,915 *
Dental Medicine	24,426	20,651	45,077	1,214
Veterinary Medicine	11,048	26,046	37,094	1,420
Information Science and Technology	14,351	19,796	34,147	843 **
Fisheries Sciences	78,535	55,278	133,813	5,117
Environmental Science / Environmental Earth Science	10,250	9,057	19,307	616
Science	41,712	175,390	217,102	4,179
Pharmaceutical Sciences and Pharmacy	6,868	3,685	10,553	331
Agriculture	146,925	110,289	257,214	8,361
Life Science / Advanced Life Science	74	95	169	24
Education	17,301	4,234	21,535	970
International Media, Communication, and Tourism Studies / Media and Communication	6,235	10,559	16,794	359
Health Sciences	31,042	4,051	35,093	906
Engineering	116,252	112,296	228,548	5,535
Public Policy	1	0	1	1
Institute of Low Temperature Science	11,477	25,063	36,540	1,729
Research Institute for Electronic Science	1,336	1,016	2,352	29
Institute for Genetic Medicine	504	350	854	27
Catalysis Research Center	4,326	16,509	20,835	458
Slavic-Eurasian Research Center	2,497	65,844	68,341	1,774
Information Initiative Center	0	0	0	59
Hokkaido University Museum	8,953	3,410	12,363	1,037
Field Science Center for Northern Biosphere	5,700	1,725	7,425	106
Hokkaido University Archives	1,614	2	1,616	0
Center for Ainu and Indigenous Studies	2,629	440	3,069	105
Office of International Affairs	0	0	0	3
GRAND TOTAL	2,003,716	1,830,407	3,834,123	82,478

* Includes the hospital and Central Institute of Isotope Science ** Includes the Research Center for Integrated Quantum Electronics

Data as of March 31, 2014

HUSCAP(Hokkaido University Collection of Scholarly and Academic Papers) Contents(cumulative)



Number of visitors in 2013:123,979

Collections / Documents

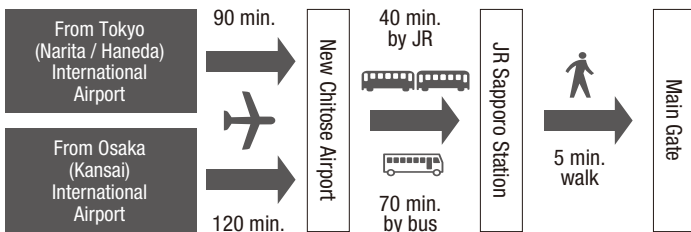
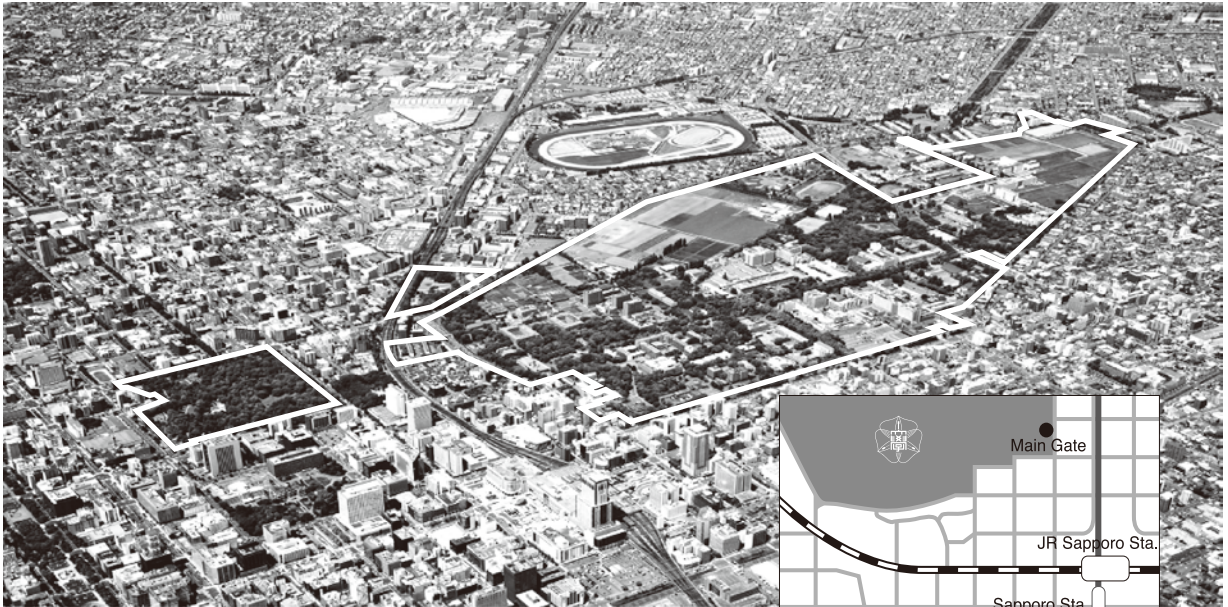
The Hokkaido University has over 4 million specimens, most of which are housed at the Hokkaido University Museum. Among our collection, more than 13,000 are type specimens, and over 10,000 of these are displayed in museum exhibits.

Category (international abbreviation)	Number of Specimens (unsorted specimens)
Land Plants	400,000 (150,000)
Fungi (SAPA)	170,000
Marine Algae (SAP)	140,000
Insects (SEHU)	2,000,000
Fish (HUMZ)	190,000
Invertebrates (ZIHU)	2,425
Extinct Plants and Animals	20,000
Rocks and Minerals	71,350 (50,000)
Archaeology	30,000
TOTAL	3,023,775

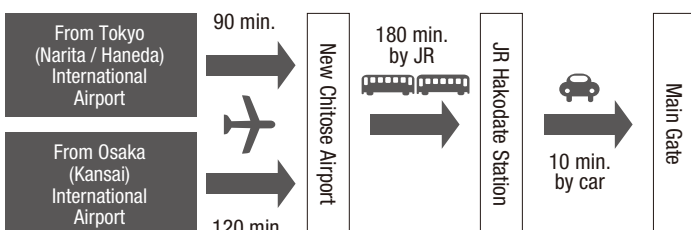
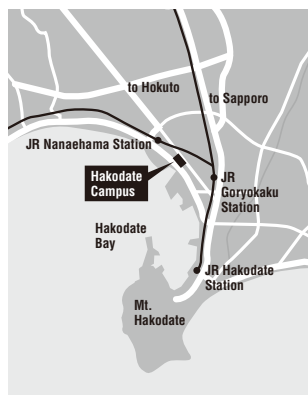
Type Specimens

Category (international abbreviation)	Number of Specimens
Insects	10,000
Plants	323
Invertebrates	700
Geology (fossils · minerals)	10
Fish	800
Marine Algae	350
Extinct Plants and Animals	700
TOTAL	12,883

Sapporo Campus



Hakodate Campus



Administration and Planning

Administration Bureau

General Affairs and Planning Dept., Finance Dept.,
Research Promotion Dept., Facilities Dept.
Kita 8, Nishi 5, Kita-ku, Sapporo 060-0808

Academic Affairs Dept.

Student Support Division, Entrance Exam Division,
Admission Center

Kita 17, Nishi 8, Kita-ku, Sapporo 060-0817
Tel: +81-(0)11-706-7484 Fax: +81-(0)11-706-7488
E-mail: ac-info@academic.hokudai.ac.jp
<http://www.hokudai.ac.jp/bureau/nyu/index.html>

Office of International Affairs & International Student Center

Kita 15, Nishi 8, Kita-ku, Sapporo 060-0815

Division of International Relations

Tel: +81-(0)11-706-8023 Fax: +81-(0)11-706-8036
E-mail: general@oia.hokudai.ac.jp

Division of International Academic Programs

Tel: +81-(0)11-706-8053 Fax: +81-(0)11-706-8067
E-mail: ryugaku@oia.hokudai.ac.jp

Division of International Services

Tel: +81-(0)11-706-8035 Fax: +81-(0)11-706-8037
E-mail: dis@oia.hokudai.ac.jp

Graduate Schools, Faculties and Schools

Graduate School / Faculty of Letters

Kita 10, Nishi 7, Kita-ku, Sapporo 060-0810

Graduate School / Faculty of Law

Kita 9, Nishi 7, Kita-ku, Sapporo 060-0809

Graduate School /

School of Economics and Business Administration

Kita 9, Nishi 7, Kita-ku, Sapporo 060-0809

Faculty / Graduate School / School of Education

Kita 11, Nishi 7, Kita-ku, Sapporo 060-0811

Graduate School of International Media, Communication, and Tourism Studies / Research Faculty of Media and Comm.

Kita 17, Nishi 8, Kita-ku, Sapporo 060-0817

Graduate School / Faculty of Public Policy

Kita 9, Nishi 7, Kita-ku, Sapporo 060-0809

Graduate School / School of Medicine

Kita 15, Nishi 7, Kita-ku, Sapporo 060-8638

Graduate School / School of Dental Medicine

Kita 13, Nishi 7, Kita-ku, Sapporo 060-8586

Graduate School / School of Veterinary Medicine

Kita 18, Nishi 9, Kita-ku, Sapporo 060-0818

Hokkaido University Veterinary Teaching Hospital

Kita 19, Nishi 10, Kita-ku, Sapporo 060-0819

Faculty of Pharmaceutical Sciences /

School of Pharmaceutical Sciences and Pharmacy

Kita 12, Nishi 6, Kita-ku, Sapporo 060-0812

Graduate School / Faculty of Health Sciences

Kita 12, Nishi 5, Kita-ku, Sapporo 060-0812

Graduate School of Information Science and Technology

Kita 14, Nishi 9, Kita-ku, Sapporo 060-0814

Graduate School / School of Fisheries Sciences

3-1-1 Minato-cho, Hakodate 041-8611

Graduate School of Environmental Science /

Faculty of Environmental Earth Science

Kita 10, Nishi 5, Kita-ku, Sapporo 060-0810

Graduate School / Faculty / School of Science

Kita 10, Nishi 8, Kita-ku, Sapporo 060-0810

Graduate School / Research Faculty /

School of Agriculture

Kita 9, Nishi 9, Kita-ku, Sapporo 060-8589

Graduate School of Life Science

Kita 10, Nishi 8, Kita-ku, Sapporo 060-0810

School of Advanced Life Science

Kita 10, Nishi 8, Kita-ku, Sapporo 060-0810

Graduate School / Faculty / School of Engineering

Kita 13, Nishi 8, Kita-ku, Sapporo 060-8628

Graduate School of Chemical Sciences and Engineering

Kita 13, Nishi 8, Kita-ku, Sapporo 060-8628

Research Institutes and Centers

Institute of Low Temperature Science

Kita 19, Nishi 8, Kita-ku, Sapporo 060-0819

Research Institute for Electronic Science

Kita 20, Nishi 10, Kita-ku, Sapporo 001-0020

Institute for Genetic Medicine

Kita 15, Nishi 7, Kita-ku, Sapporo 060-0815

Catalysis Research Center

Kita 21, Nishi 10, Kita-ku, Sapporo 001-0021

Slavic-Eurasian Research Center

Kita 9, Nishi 7, Kita-ku, Sapporo 060-0809

Information Initiative Center (North and South Bldgs.)

Kita 11, Nishi 5, Kita-ku, Sapporo 060-0811

Central Institute of Isotope Science

Kita 15, Nishi 7, Kita-ku, Sapporo 060-0815

Research Center for Integrated Quantum Electronics

Kita 13, Nishi 8, Kita-ku, Sapporo 060-8628

Field Science Center for Northern Biosphere

Kita 11, Nishi 10, Kita-ku, Sapporo 060-0811

Meme Media Laboratory

Kita 13, Nishi 8, Kita-ku, Sapporo 060-8628

Research and Education Center for Brain Science

Kita 15, Nishi 7, Kita-ku, Sapporo 060-0815

Research Center for Zoonosis Control

Kita 20, Nishi 10, Kita-ku, Sapporo 001-0020

Hokkaido University Archives

Kita 8, Nishi 5, Kita-ku, Sapporo 060-0808

Center for Advanced Tourism Studies

Kita 17, Nishi 8, Kita-ku, Sapporo 060-0817

Center for Language Learning

Kita 17, Nishi 8, Kita-ku, Sapporo 060-0817

Center for Ainu and Indigenous Studies

Kita 8, Nishi 6, Kita-ku, Sapporo 060-0808

Center for Experimental Research in Social Sciences

Kita 10, Nishi 7, Kita-ku, Sapporo 060-0810

Research Institute for Information Law and Policy

Kita 9, Nishi 7, Kita-ku, Sapporo 060-0809

Center for Post-modern Socio-metabolic System

Kita 13, Nishi 8, Kita-ku, Sapporo 060-0828

Research Center for Integrative Mathematics

Kita 12, Nishi 7, Kita-ku, Sapporo 060-0812

Center for Sustainability Science (CENSUS)

Kita 9, Nishi 8, Kita-ku, Sapporo 060-0809

Center of Education and Research for Topological Science and Technology

Kita 13, Nishi 8, Kita-ku, Sapporo 060-8628

Center for Environmental and Health Sciences

Kita 12, Nishi 7, Kita-ku, Sapporo 060-0812

Center for Translational Research

Kita 15, Nishi 6, Kita-ku, Sapporo 060-0815

Health Care Center

Kita 16, Nishi 7, Kita-ku, Sapporo 060-0816

Global Institution for Collaborative Research and Education (GI-CoRE)

Kita 15, Nishi 8, Kita-ku, Sapporo 060-0815

Global Station for Quantum Medical Science and Engineering

Kita 15, Nishi 7, Kita-ku, Sapporo 060-8648

Global Station for Zoonosis Control

Kita 20, Nishi 10, Kita-ku, Sapporo 001-0020

