



HOKKAIDO
UNIVERSITY

2015-2016 Data Book

History	01
Organizational Structure	04
Number of Staff	06
Number of Students / Degrees Granted	08
International Student Numbers	09
Distribution within Hokkaido University	10
International Academic Exchange	11
Inter-University Exchange Agreements	11
Memoranda Based on Inter-University Agreements	14
Departmental Exchange Agreements	15
Japanese Language Classes	20
Hokkaido University Hospital	21
Hokkaido University Library	22
Hokkaido University Museum	23
Campus Maps	24
Contact Information	25



HOKKAIDO
UNIVERSITY

Sapporo Agricultural College (1876–1907)

1876	7	Dr. William S. CLARK, then president of the Massachusetts Agricultural College in the United States invited to be vice president of Sapporo Agricultural College. He arrives in Sapporo with two American professors, W. WHEELER and D. PENHALLOW, and eleven American students.
	8.14	Sapporo Agricultural College inaugurated. (Hokkaido University celebrates its anniversary of foundation on August 14.)
	9	Hirotake CHOSHŌ named president of Sapporo Agricultural College.
	12	Book-Stack Room (later College Library) opens.
1878	10	The martial arts training facility (current Sapporo Clock Tower) constructed.
1881	2	Genzo MORI, then Hokkaido development commissioner, acts also as college president.
1886	7	Botanical Garden constructed.
	12	Hideaki SATO named administrative officer of Hokkaido prefectural government and acting college president.
1887	3	Shosuke SATO named acting president.
1888	12	Bunzo HASHIGUCHI named president.
1891	8	Shosuke SATO named assistant president.
1894	4	Shosuke SATO named president.

Tohoku Imperial University (1907–1918)

1907	9	Sapporo Agricultural College becomes the Agricultural College of Tohoku Imperial University and adds preparatory courses. (It is inaugurated in September 1907.) Book-Stack Room renamed College Library. Shosuke SATO named dean of the Agricultural College of Tohoku Imperial University.
1909	2	Oshoro-maru built as a new training ship.

Hokkaido Imperial University (1918–1947)

1918	4	Agricultural College of Tohoku Imperial University transferred to the newly established Hokkaido Imperial University, becoming the Agricultural College of Hokkaido Imperial University. Shosuke SATO named president of Hokkaido Imperial University and dean of its Agricultural College.
1919	2	Agricultural College of Hokkaido Imperial University renamed the School of Agriculture in Hokkaido Imperial University. The School of Medicine established.
	4	Shosuke SATO named president of Hokkaido Imperial University.
1921	4	The Medical Clinic attached to the School of Medicine established (becomes operational in November 1921).
1922	5	College Library renamed Hokkaido University Library.
1924	9	The School of Engineering established.
1930	4	The School of Science established.
	12	Takajiro MINAMI named president.
1933	12	Kumao TAKAOKA named president.
1937	12	Yutaka KON named president.
1941	11	The Institute of Low Temperature Science established.
1943	2	The Institute of Catalysis Research established. The Institute of VHF Research established.
1945	7	The Administrative Office and the Student Affairs Office established.
	11	Seiya ITO named president.
1946	3	The Institute of VHF Research renamed the Institute of Applied

Electronics Research.

1947 4 The School of Law and Letters established.

Hokkaido University (1947–2004)

1947	10	Hokkaido Imperial University renamed Hokkaido University.
1949	5	Under the National School Establishment Law, Hokkaido University reorganized into the new Hokkaido University with schools of law and letters, education, science, medicine, engineering, agriculture, and fisheries sciences (Hakodate). The Medical Clinic attached to the School of Medicine renamed the Hospital attached to the School of Medicine. Seiya ITO named president.
	6	The Department of Liberal Studies established (renamed the School of Liberal Studies in April 1951).
1950	3	Preparatory courses abolished.
	4	The Institute of Tuberculosis Research established. The School of Law and Letters divided into the School of Letters and the School of Law and Economics.
	10	Yoshichika SHIMA named president.
1952	4	The School of Veterinary Medicine established.
1953	4	New Graduate Schools of Letters, Education, Law, Economics and Business Administration, Science, Engineering, Agriculture, Veterinary Medicine, and Fisheries Sciences established.
	8	The School of Law and Economics divided into the School of Law and the School of Economics and Business Administration.
1954	10	Harusada SUGINOME named president.
1955	4	The Graduate School of Medicine established.
1957	7	The School of Liberal Studies renamed the School of Liberal Arts.
1958	4	The Graduate School of Pharmaceutical Sciences established.
1961	5	The Training Center for Engineering Teachers established (abolished in March 1969).
1965	4	The School of Pharmaceutical Sciences and Pharmacy established.
1966	10	Jiro FURUICHI named president.
1967	2	Atae ABE named acting president upon the death of Jiro FURUICHI.
	5	Juro HORIUCHI named president.
	6	The School of Dental Medicine established.
	8	The Dental Hospital Attached to the School of Dental Medicine becomes operational.
1969	4	General Education branch established at the Hokkaido University Library.
1970	4	The Computer Center (joint-usage facility) established.
1971	5	Kichizo NIWA named president.
1972	5	The Health Management Center established. The Physical Education Center established.
1974	4	The Graduate School of Dental Medicine established.
	6	The Institute of Tuberculosis Research reorganized into the Institute of Immunological Research.
1975	5	Shigekazu IMAMURA named president.
1977	4	The Graduate School of Environmental Science (stand-alone graduate school) established.
1978	4	The Slavic Research Center established. The Central Institute of Isotope Science established.
1979	4	The Information Processing Education Center established.

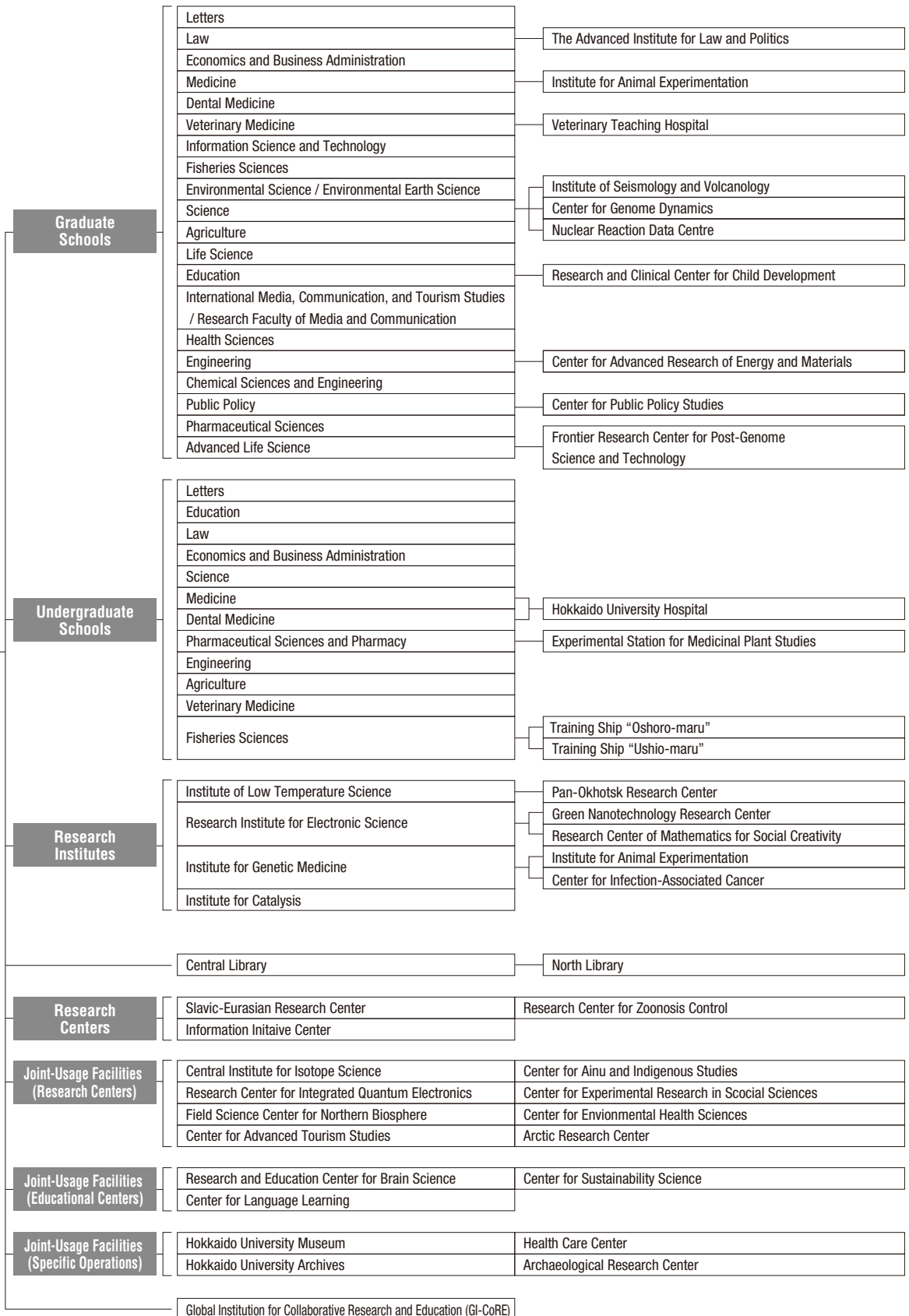
		The Instrumental Analysis Center established.
1980	10	The College of Medical Technology established.
1981	4	The Institute of Language and Cultural Studies established.
		The Center for Experimental Plants and Animals established.
	5	Mikio ARIE named president.
1985	4	The Research Center for Molecular Genetics established.
1987	5	Yoshio BAN named president.
1989	5	The Institute of Catalysis Research evolves into the Catalysis Research Center (joint-usage research facility).
1990	6	The Slavic Research Center designated as a joint-usage research facility.
1991	4	The International Student Center established.
		The Research Center for Quantum Interface Electronics established.
	5	Tsutomu HIROSHIGE named president.
1992	4	The Institute of Applied Electronics Research reorganized into the Research Institute for Electronic Science.
1993	4	The Graduate School of Environmental Science evolves into the Graduate School of Environmental Earth Science (stand-alone graduate school).
1994	6	The Center for Advanced Research of Energy established.
1995	4	The School of Liberal Arts abolished.
		The Center for Research and Development in Higher Education established.
		The Institute of Low Temperature Science designated as a joint-usage research facility.
		The Graduate School of Science and the Graduate School of Veterinary Medicine each evolves into a Graduate Research School, which places greater emphasis on graduate education and research.
		The Environmental Preservation Center established.
		General Education branch of the Hokkaido University Library renamed, North Branch.
	5	Norihito TANBO named president.
1996	5	The Center for Advanced Science and Technology established.
	8	The Venture Business Laboratory established.
1997	4	The Graduate School of Engineering evolves into a Graduate Research School.
1998	4	The Graduate School of Pharmaceutical Sciences evolves into a Graduate Research School.
1999	4	The Graduate School of Agriculture evolves into a Graduate Research School.
		The Information Processing Education Center evolves into the Education and Research Center for Information and Media Studies.
		The Hokkaido University Museum established.
2000	4	Graduate Schools of Letters, Education, Law, Economics and Business Administration, Medicine, Dental Medicine, and Fisheries Sciences each evolves into a Graduate Research School.
		The Graduate School of International Media and Communication Studies (stand-alone graduate school) established.
		The Institute of Immunological Research reorganized into the Institute for Genetic Medicine (the Research Laboratory Attached to the School of Medicine abolished).
		The Center for Northern Eurasian and Northern Pacific Studies established.

2001	4	The Field Science Center for Northern Biosphere assumes the management of the following facilities: the Marine Biological Station and the Institute of Algological Research, formerly attached to the School of Science; botanical gardens, farms, forests, and ranches formerly attached to the School of Agriculture; Lake Toya Inland Water Station, Usujiri Fisheries Station, and Nanae Fresh Water Laboratory, formerly attached to the School of Fisheries Sciences.
		The expanded Center for Advanced Science and Technology assumes the management of the Chromosome Research Unit which was formerly attached to the School of Science, the Center for Experimental Plants and Animals, and the Research Center for Molecular Genetics.
		The Research Center for Quantum Interface Electronics evolves into the Research Center for Integrated Quantum Electronics.
	5	Mutsuo NAKAMURA named president.
2002	2	The Creative Scientific Research Institution established.
	3	The new training ship Ushio-maru becomes operational (the old training ship Hokusei-maru decommissioned).
2003	4	The Computer Center and the Education and Research Center for Computing and Multimedia Studies evolves into the Information Initiative Center.
	9	The Research and Education Center for Brain Science established.
	10	The University Hospital attached to the School of Medicine and the Dental Hospital attached to the School of Dental Medicine integrated into the Hokkaido University Hospital.
		The Management Center of Intellectual Property established.
National University Corporation Hokkaido University (2004 to present)		
2004	4	Hokkaido University becomes the National University Corporation Hokkaido University.
		The Graduate School of Information Science and Technology (stand-alone graduate school) established.
		The Center for Advanced Research of Energy evolves into the Center for Advanced Research of Energy Conversion Materials.
2005	3	The Center for Northern Eurasian and Northern Pacific Studies abolished.
	4	The Faculty of Fisheries Sciences, the Faculty of Environmental Earth Science, the Graduate School of Fisheries Sciences, and the Graduate School of Environmental Science established. (The Department of Fisheries Sciences and the Department of Environmental Earth Science [stand-alone department] abolished in the graduate school.)
		The Graduate School of Public Policy (professional graduate school) and the Faculty of Public Policy established.
		The Center for Advanced Science and Technology and the Creative Scientific Research Institution integrated into the new Creative Scientific Research Institution.
		The Physical Education Center integrated into the Center for Research and Development in Higher Education.
		The Research Center for Zoonosis Control established.
	The Admission Center established.	
5	The Hokkaido University Archives established.	
2006	4	The Faculty of Science, the Faculty of Pharmaceutical Sciences, the Research Faculty of Agriculture, the Faculty of Advanced Life Science, the Graduate School of Science, the

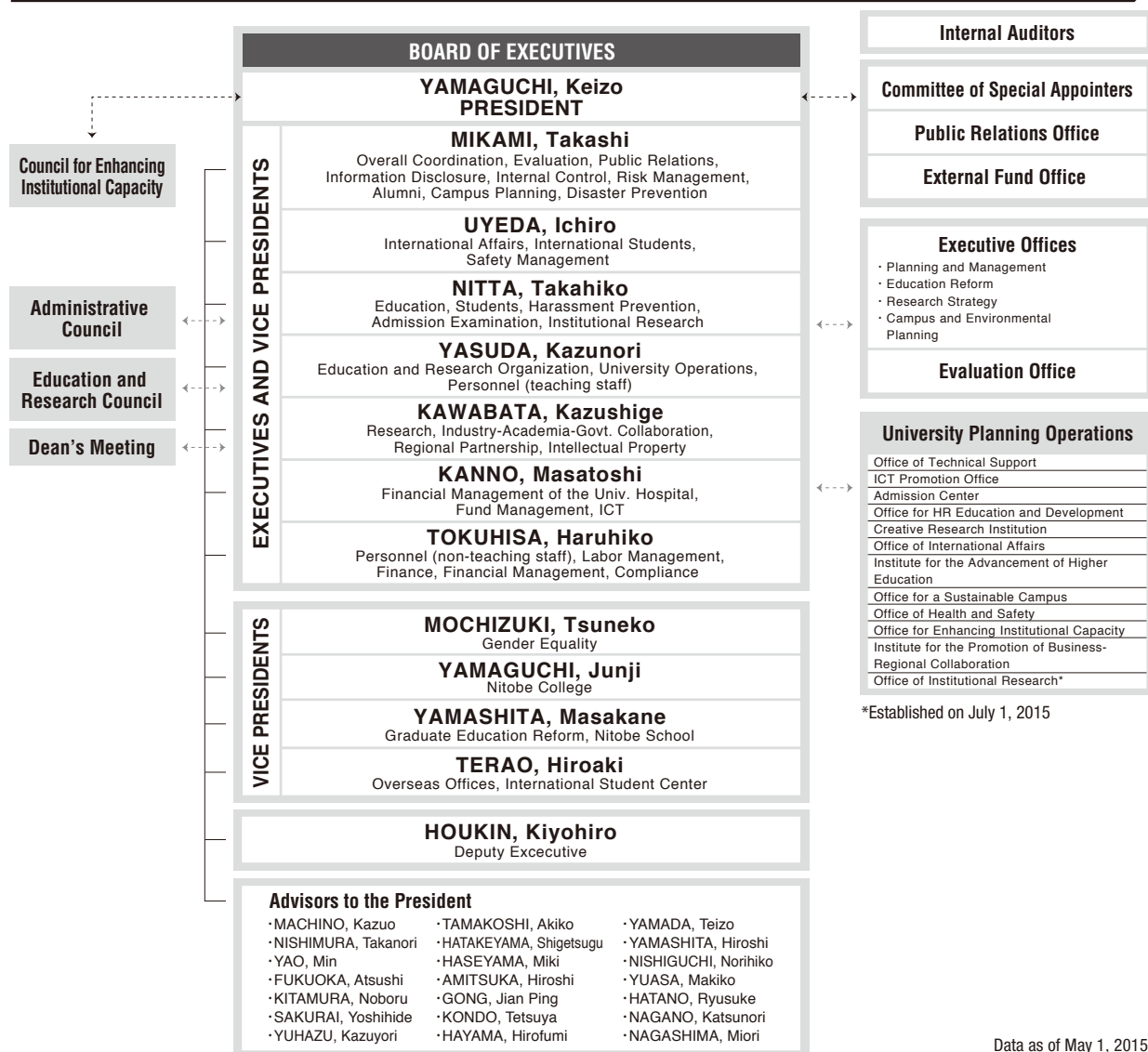
		Graduate School of Agriculture, and the Graduate School of Life Science established. (The Department of Science, the Department of Pharmaceutical Sciences, and the Department of Agriculture abolished in the graduate school.)			The Institute of Low Temperature Science, Research Institute for Electronic Science, Institute for Genetic Medicine, Catalysis Research Center, Slavic Research Center, Information Initiative Center and Research Center for Zoonosis Control authorized as joint usage research centers.
		The Center for Advanced Tourism Studies established.			
2007	3	The Education and Research Support Office established as an administrative unit.		7	The Office of International Affairs established as an administrative unit, into which the International Student Center is transferred.
		The College of Medical Technology abolished.			
	4	The ICT Promotion Office established as an administrative unit.		10	The Institute for the Advancement of Higher Education established as an administrative unit, into which the Center for Research and Development in Higher Education is transferred.
		The Faculty of Education, the Research Faculty of Media and Communication, the Graduate School of Education, and the Graduate School of International Media, Communication and Tourism Studies established. (The Department of Education, the Department of International Media and Communication, and the Institute of Language and Cultural Studies abolished.)		11	The Office for a Sustainable Campus established as an administrative unit.
		The Center for Language Learning established.			
		The Center for Ainu and Indigenous Studies established.	2011	3	The Office of Safety and Health established as an administrative unit.
		The Center for Experimental Research in Social Sciences established.		4	The Center for Translational Research established.
	5	Hiroshi SAEKI named president.			The Venture Business Laboratory renamed the Meme Media Laboratory.
	10	The Management Center of Intellectual Property evolves into the Management Center for Intellectual Property and Innovation.			The Environmental Preservation Center transferred to the Office for a Sustainable Campus (an administrative unit).
2008	4	The Faculty of Health Sciences and the Graduate School of Health Sciences (for master's courses) established.			Oshoro-maru training ship authorized as a joint usage educational facility.
		The Research Institute for Information Law and Policy established.			
		The Research Center for Environmental Nano and Bio Engineering established.	2012	7	The Forest Research Station of the Field Science Center for Northern Biosphere, and the Marine Research Station (Akkeshi Marine Station and Muroran Marine Station) of the Field Science Center for Northern Biosphere authorized as joint usage educational facilities.
		The Research Center for Integrative Mathematics established.	2013	4	Keizo YAMAGUCHI named president.
		The Center for Sustainability Science established.	2014	2	The Office for Enhancing Institutional Capacity established as an administrative unit.
		The Admission Center, formerly a University education development center, evolves into an administrative unit.		4	Center for Food and Medical Innovation established as an administrative unit.
2009	4	The Management Center for Intellectual Property and Innovation (an administrative unit) reorganized into the Center for Innovation and Business Promotion (an administrative unit).			The Global Institution for Collaborative Research and Education (GI-CoRE) is established.
		The Front Office for Resource Education and Development established as an administrative unit.			The Slavic Research Center is re-named the Slavic-Eurasian Research Center.
		The Center of Education and Research for Topological Science and Technology established.			The Research Center for Environmental Nano and Bio Engineering is re-named the Center for Post-modern Socio-metabolic System.
		The Creative Scientific Research Institution and the Instrumental Analysis Center reorganized into the Creative Research Institution (an administrative unit).		9	The Center for Translational Research abolished.
	8	The North Branch of the Hokkaido University Library renamed the North Library.	2015	3	The Meme Media Laboratory abolished.
2010	4	The Faculty of Engineering and the Graduate School of Engineering established.			The Research Institute for Information Law and Policy abolished.
		The Graduate School of Chemical Sciences and Engineering established.			The Center for Post-modern Socio-metabolic Systems abolished.
		The Graduate School of Health Sciences (for doctoral courses) established.			The Research Center for Integrative Mathematics abolished.
		The Center for Environmental and Health Sciences established.		4	The Arctic Research Center established.
		The Health Management Center evolves into the Health Care Center.			The Archaeological Research Center established.
		The Center for Advanced Research of Energy Conversion Materials transferred to the Center for Advanced Research of Energy and Materials, attached to the Graduate School of Engineering.			The Institute for the Promotion of Business-Regional Collaboration (operational organization) established. (The Center for Innovation and Business Promotion and the Center for Food and Medical Innovation were merged into the Institute.)
				10	The Catalysis Research Center is reorganized into the Institute for Catalysis

General Organization

HOKKAIDO UNIVERSITY



Governing Organization



Data as of May 1, 2015

Administrative Organization



Data as of May 1, 2015

EXECUTIVE BOARD	President (1), 7 Executives (7), Internal Auditors (2)	Professors	Associate Professors	Lecturers	Assistant Professors	Research Associates	URA Staff	Specialist Staff	Administrative Staff	Technical Staff	TOTAL
GOVERNING ORGANIZATION STAFF	Office of Technical Support	-	-	-	-	-	-	-	-	-	0
	ICT Promotion Office	-	-	-	-	-	-	1	14	12	27
	Admission Center	-	-	-	-	-	-	-	-	-	0
	Office for HR Education and Development	-	-	-	-	-	-	-	-	-	0
	Creative Research Institution	-	1	-	1	-	-	1	-	8	11
	Office of International Affairs	5	11	3	-	-	-	4	33	-	56
	Institute of Advancement of Higher Education	3	7	-	-	-	-	-	-	4	14
	Office for a Sustainable Campus	-	-	-	-	-	-	-	-	-	0
	Office of Health and Safety	1	1	-	-	-	-	1	-	-	3
	Office for Enhancing Institutional Capacity	-	-	-	-	-	11	-	-	-	11
	Institute for the Promotion of Business-Regional Collaboration	-	-	-	-	-	-	7	-	-	7
EDUCATIONAL RESEARCH ORGANIZATION STAFF	Letters	53	37	-	9	-	3	-	-	-	102
	Law	33	15	2	12	3	-	2	1	-	68
	Economics and Business Administration	22	19	-	7	-	-	2	-	-	50
	Medicine	41	28	19	62	3	-	-	-	13	166
	Dental Medicine	19	15	4	49	-	-	-	-	4	91
	Veterinary Science	17	15	4	14	-	-	-	-	3	53
	Information Science and Technology	38	36	-	20	-	-	-	-	-	94
	Fisheries Sciences	29	37	1	11	-	-	-	-	40	118
	Environmental Science / Environmental Earth Science	20	26	-	7	1	-	-	-	-	54
	Science	71	73	8	49	2	-	2	-	19	224
	Pharmaceutical Sciences	16	8	4	25	-	-	-	-	3	56
	Agriculture	46	40	24	12	-	-	-	-	11	133
	Life Science / Advanced Life Science	11	6	2	10	-	-	-	-	-	29
	Education	15	24	-	1	1	-	-	-	-	41
	International Media, Communication, and Tourism Studies	25	23	-	2	-	-	-	-	-	50
	Health Sciences	28	12	7	28	-	-	-	-	-	75
	Engineering	96	94	2	85	1	-	-	-	51	329
	Chemical Sciences and Engineering	-	-	-	-	-	-	-	-	-	0
	Public Policy	10	9	2	-	-	-	-	-	-	21
	Hokkaido University Hospital	4	16	52	84	-	-	-	-	655	811
	Institute of Low Temperature Science	14	12	1	21	-	-	-	-	9	57
	Research Institute of Electronic Science	14	14	-	17	-	-	-	-	10	55
	Institute of Genetic Medicine	8	4	3	15	-	-	-	-	7	37
	Institute for Catalysis	9	8	-	5	-	-	-	-	6	28
	Slavic-Eurasian Research Center	8	4	-	2	1	-	-	-	-	15
	Information Initiative Center	6	5	-	3	-	-	-	-	-	14
	Research Center for Zoonosis Control	6	5	2	3	-	-	-	-	2	18
	Central Institute of Isotope Science	1	-	1	1	-	-	-	-	2	5
	Research Center for Integrated Quantum Electronics	3	3	-	-	-	-	-	-	-	6
	Field Science Center for Northern Biosphere	16	16	-	11	-	-	-	-	72	115
	Center for Advanced Tourism Studies	3	1	-	-	-	-	-	-	-	4
	Center for Ainu and Indigenous Studies	1	6	-	-	-	-	-	-	-	7
	Center for Experimental Research in Social Sciences	-	-	-	1	-	-	-	-	-	1
	Center for Environmental Health Sciences	-	1	-	-	-	-	-	-	-	1
	Arctic Research Center	1	-	-	-	-	-	-	-	-	1
	Research and Education Center for Brain Science	-	-	-	-	-	-	-	-	-	0
	Center for Language Learning	-	-	-	-	-	-	-	-	-	0
	Center for Sustainability Science	-	-	-	-	-	-	-	-	-	0

EXECUTIVE BOARD	President (1), 7 Executives (7), Internal Auditors (2)	Professors	Associate Professors	Lecturers	Assistant Professors	Research Associates	URA Staff	Specialist Staff	Administrative Staff	Technical Staff	TOTAL
EDU. RESEARCH ORG. STAFF	Hokkaido University Museum	2	3	2	1	-	-	-	-	-	8
	Hokkaido University Archives	-	1	-	-	-	-	-	-	1	2
	Health Care Center	1	-	2	-	-	-	-	-	9	12
	Archaeological Research Center	-	-	-	2	-	-	-	-	-	2
	Global Institution for Collaborative Research and Education (GI-CoRE)	4(12)	(8)	(2)	1	-	-	-	-	-	5
ADMINISTRATIVE STAFF	General Affairs and Planning Department	-	-	-	-	-	-	-	76	-	76
	Finance Department	-	-	-	-	-	-	-	80	-	80
	Academic Affairs Department	-	-	-	-	-	-	-	66	-	66
	Research Promotion Department	-	-	-	-	-	-	-	32	1	33
	Facilities Department	-	-	-	-	-	-	-	9	25	34
	Graduate School of Letters / Faculty of Letters Office	-	-	-	-	-	-	-	16	-	16
	Faculty of Education Office	-	-	-	-	-	-	-	7	-	7
	Graduate School of Law / School of Law Office	-	-	-	-	-	-	-	20	-	20
	Economics and Business Administration Office	-	-	-	-	-	-	-	7	-	7
	Science / Life Sciences Office	-	-	-	-	-	-	-	41	2	43
	School of Medicine Office	-	-	-	-	-	-	-	42	2	44
	School of Dental Medicine Office	-	-	-	-	-	-	-	10	1	11
	School of Pharmaceutical Sciences and Pharmacy Office	-	-	-	-	-	-	-	11	-	11
	School of Engineering Office	-	-	-	-	-	-	-	67	3	70
	School of Agriculture Office	-	-	-	-	-	-	-	23	2	25
	School of Veterinary Medicine Office	-	-	-	-	-	-	-	14	-	14
	Hakodate Campus Office	-	-	-	-	-	-	-	23	4	27
	Office of Hokkaido University Hospital	-	-	-	-	-	-	-	115	6	121
	Graduate School of Environmental Science Office	-	-	-	-	-	-	-	11	-	11
	Int'l Media, Communication, and Tourism Studies Office	-	-	-	-	-	-	-	9	-	9
	Institute of Low Temperature Science Office	-	-	-	-	-	-	-	9	-	9
	University Library Office	-	-	-	-	-	-	-	90	-	90
	Northern Campus Administration	-	-	-	-	-	-	-	15	-	15
	Field Science Center for Northern Biosphere Office	-	-	-	-	-	-	-	18	-	18
	Office of Internal Auditors	-	-	-	-	-	-	-	7	-	7
	TOTAL		700	636	145	571	12	14	20	866	987

Data as of May 1, 2015

* Staff numbers in parenthesis () for the Global Institution for Collaborative Research and Education (GI-CoRE) indicate numbers of staff dedicated to this HU unit. The staff indicated are included in total staff numbers (Graduate School of Medicine: 2; Graduate School of Veterinary Medicine: 3; Research Faculty of Agriculture: 1; Faculty of Health Sciences: 1; Faculty of Engineering: 2; Hokkaido University Hospital: 2; Research Center for Zoonosis Control: 11).

Undergraduate Courses				
Faculties	Regular Students	Research Students	Auditors	TOTAL
Letters	639	16	94	749
Education	189	9	13	211
Law	682	-	19	701
Economics and Business Administration	635	10	14	659
Science	988	1	10	999
Medicine	1,161	-	4	1,165
Dental Medicine	261	2	-	263
Pharmaceutical Sciences and Pharmacy	314	-	4	318
Engineering	2,300	-	34	2,334
Agriculture	706	-	12	718
Veterinary Medicine	210	-	-	210
Fisheries Science	665	3	10	678
General Education	2,676	-	46	2,722
TOTAL	11,426	41	260	11,727

Graduate Courses						
Faculties	Regular Students			Research Students	Auditor	TOTAL
	Master's Course	Professional Course	Doctoral Course			
Letters	196	-	189	11	19	415
Law	39	123	49	4	11	226
Economics and Business Administration	70	29	21	1	3	124
Medicine	40	-	439	8	5	492
Dental Medicine	-	-	134	11	-	145
Veterinary Medicine	-	-	91	4	1	96
Information Science and Technology	386	-	152	10	8	556
Fisheries Science	214	-	64	-	4	282
Faculty of Fisheries Science	-	-	-	2	-	2
Environmental Science	306	-	175	-	-	481
Faculty of Environmental Earth Science	-	-	-	17	-	17
Science	279	-	136	-	1	416
Faculty of Science	-	-	-	5	-	5
Faculty of Pharmaceutical Sciences	-	-	-	-	-	0
Agriculture	338	-	154	-	4	496
Research Faculty of Agriculture	-	-	-	5	-	5
Life Science	251	-	142	-	7	400
Faculty of Advanced Life Science	-	-	-	1	-	1
Education	112	-	88	-	1	201
Faculty of Education	-	-	-	3	-	3
Graduate School of Education	-	-	-	-	-	0
Int'l Media, Communication and Tourism Studies	107	-	77	-	1	185
Research Faculty of Media, Communication and Tourism Studies	-	-	-	11	-	11
Graduate School of Media, Communication and Tourism Studies	-	-	-	-	-	0
Health Sciences	101	-	40	-	-	141
Research Faculty of Health Sciences	-	-	-	4	-	4
Engineering	695	-	165	-	9	869
Faculty of Engineering	-	-	-	18	-	18
Graduate School of Engineering	-	-	8	-	-	8
Graduate School of Chemical Sciences and Engineering	311	-	150	-	3	464
Graduate School of Public Policy	-	70	-	-	3	73
Faculty of Public Policy	-	-	-	5	-	5
TOTAL	3,445	222	2,274	120	80	6,141

Institutes and Centers				
Institutes / Centers	Research Students, etc.	Institutes / Centers	Research Students, etc.	TOTAL
Institute of Low Temperature Science	1	Hokkaido University Museum	1	2
Information Initiative Center	2	Field Science Center for Northern Biosphere	1	3
Office of International Affairs	63	Center for Advanced Tourism Studies	2	65
Institute for the Advancement of Higher Education	1			1
TOTAL	67		4	71

Number of Degrees Granted		
Degrees	2015	Overall
Bachelor's Degrees	2,510	134,103
Master's Degrees	1,573	45,362
Professional Degrees	124	1,279
Doctorates	445	23,466
TOTAL	4,652	204,210

Data as of May 1, 2015

For international student numbers concerning faculty and course, see page 8 of the main Guidebook

International Student Numbers by Country / Region

AREA	COUNTRY	Letters	Law	Economics and Business	Medicine	Dental Medicine	Veterinary Medicine	Information Science and Technology	Fisheries Sciences	Environmental Science/Environmental Earth Science	Science	Pharmaceutical Sciences	Agriculture	Life Science / Advanced Life Science	Education	International Media, Comm. and Tourism Studies / Media and Comm.	Health Sciences	Engineering	Graduate School of Chemical Sciences and Engineering	Public Policy	Institute for the Advancement of Higher Education (First Year Education Division)	Field Science Center for Northern Biosphere	Center for Advanced Tourism Studies	International Student Center	Institute for the Advancement of Higher Education	Slavic-Eurasian Research Center	TOTAL
Asia	Bangladesh	1	-	-	-	3	3	-	2	5	2	-	3	8	-	-	-	4	6	-	-	-	-	-	-	-	37
	Brunei	-	-	1	-	-	-	-	-	-	-	-	-	-	-	-	-	-	-	-	-	-	-	-	-	-	1
	Cambodia	-	-	-	-	-	-	-	-	-	-	-	-	-	-	-	-	4	-	-	-	-	-	1	-	-	5
	China	174	47	60	18	1	4	61	37	73	13	-	49	26	45	72	8	74	30	15	10	-	-	20	-	-	837
	India	-	-	-	1	-	-	1	1	3	2	-	-	8	-	-	-	5	4	-	-	-	-	-	-	-	25
	Indonesia	2	1	-	-	-	2	4	1	10	7	-	20	1	-	-	-	9	1	-	2	-	-	2	-	-	62
	Korea	19	7	5	1	1	3	2	4	7	6	-	25	1	3	3	-	34	4	2	6	-	-	1	-	-	134
	Laos	-	-	1	-	-	-	-	-	-	-	-	-	-	-	-	-	3	-	-	-	-	-	-	-	-	4
	Malaysia	-	-	-	-	-	-	-	2	1	1	-	3	-	1	-	-	6	-	-	4	-	-	2	-	-	20
	Mongolia	-	1	-	1	-	2	-	-	5	1	-	2	1	-	-	-	1	-	-	-	-	-	-	-	-	14
	Myanmar	-	-	-	-	-	3	1	-	-	-	-	2	-	-	-	-	-	-	-	-	-	-	2	-	-	8
	Nepal	1	-	-	2	-	4	1	-	2	-	-	-	-	-	-	1	3	-	-	-	-	-	-	-	-	14
	Pakistan	-	-	-	-	-	-	-	-	-	1	-	-	1	-	-	-	7	1	-	-	-	-	-	-	-	10
	Philippines	-	-	1	-	-	1	1	-	4	4	-	-	2	-	-	-	3	2	-	-	-	-	-	-	-	18
	Singapore	1	-	-	-	-	-	-	-	-	-	-	-	1	-	-	-	-	-	2	-	-	-	-	-	-	4
	Sri Lanka	-	-	-	-	-	1	-	-	-	3	-	-	-	-	-	-	7	-	-	-	-	-	-	-	-	11
	Taiwan	9	8	8	2	-	-	1	1	2	1	-	1	-	1	6	-	1	2	-	1	-	-	1	-	-	45
	Thailand	2	-	-	-	1	7	4	2	1	1	-	7	2	-	-	-	13	2	-	-	-	-	2	-	-	44
	Vietnam	-	-	-	-	-	2	-	-	4	5	-	1	-	-	2	-	4	1	-	2	-	-	2	-	-	23
Oceania	Australia	-	1	-	-	-	-	1	-	-	-	-	-	-	-	-	-	1	-	-	1	-	-	-	-	-	4
	New Zealand	1	-	-	-	-	-	-	-	-	-	-	-	-	-	-	-	-	-	-	-	-	-	1	-	-	2
	Papua New Guinea	-	-	-	1	-	-	-	-	-	-	-	-	-	-	-	-	-	-	-	-	-	-	-	-	-	1
	Solomon Is.	-	-	-	-	-	-	-	-	1	-	-	-	-	-	-	-	1	-	-	-	-	-	1	-	-	3
Europe	Azerbaijan	1	-	1	-	-	-	-	-	-	-	-	-	-	-	-	-	-	-	-	-	-	-	-	-	-	2
	Belarus	-	-	-	-	-	-	-	-	-	-	-	-	-	-	1	-	-	-	-	-	-	-	-	-	-	1
	Czech	-	-	-	-	-	-	-	-	-	-	-	-	-	-	-	-	1	-	-	-	-	-	-	-	-	1
	Cyprus	-	-	-	-	-	-	-	-	-	-	-	1	-	-	-	-	-	-	-	-	-	-	-	-	-	1
	Denmark	1	-	-	-	-	-	-	-	-	-	-	-	-	-	-	-	2	-	-	-	-	-	-	-	-	3
	Finland	1	2	-	-	-	-	-	-	-	-	-	-	-	1	-	-	-	1	-	1	-	-	4	1	-	11
	France	3	2	-	-	-	-	6	-	1	1	-	-	-	-	1	-	1	-	-	-	-	-	-	-	-	15
	Germany	1	-	-	-	-	-	2	-	1	-	-	-	1	-	1	-	2	-	-	-	-	-	2	-	-	10
	Greece	-	-	-	-	-	-	-	-	1	-	-	-	-	-	-	-	-	-	-	-	-	-	1	-	-	2
	Hungary	1	-	-	-	-	1	1	-	1	-	-	-	-	-	-	-	-	-	-	-	-	-	1	-	-	5
	Italy	1	-	-	-	-	-	-	-	-	-	-	-	-	-	-	-	1	-	-	-	-	-	-	-	-	2
	Ireland	-	-	-	-	-	-	-	-	-	-	-	-	-	-	-	-	-	-	1	-	-	-	-	-	-	1
	Kazakhstan	1	-	1	-	-	-	-	-	-	-	-	-	-	-	-	-	-	-	-	-	-	-	1	-	-	3
	Kyrgyzstan	1	-	-	-	-	-	-	-	-	-	-	-	-	-	-	-	-	-	-	-	-	-	-	-	-	1
	Latvia	1	-	-	-	-	-	-	-	-	-	-	-	-	-	-	-	-	-	-	-	-	-	-	-	-	1
	Lithuania	-	-	-	-	-	-	-	-	-	-	-	-	-	-	-	-	-	-	-	-	-	-	1	-	-	1
	Poland	-	-	-	-	-	-	3	-	-	-	-	-	-	1	-	-	2	-	-	-	-	-	-	-	-	6
	Romania	-	-	-	-	-	-	-	-	-	-	-	-	-	-	-	-	-	-	-	-	-	-	1	-	-	1
	Russia	4	-	2	-	-	-	1	-	1	1	-	-	-	1	2	-	1	-	-	-	-	-	3	-	-	16
	Spain	1	-	-	-	-	-	-	-	-	-	-	-	1	-	-	-	-	-	-	-	-	-	-	-	-	2
	Switzerland	1	-	-	-	-	-	-	-	-	1	-	-	-	-	-	-	-	-	-	-	-	-	-	-	-	2
	Sweden	-	-	-	-	-	-	-	-	-	-	-	-	-	-	-	-	4	-	-	-	-	-	-	-	-	4
	Tajikistan	-	-	-	-	-	-	-	-	-	-	-	-	-	-	-	-	-	-	-	-	-	-	-	-	1	1
	United Kingdom	3	1	-	-	-	1	-	-	-	-	-	-	-	-	-	-	-	-	-	1	-	-	5	-	-	11
	Ukraine	-	-	-	-	-	-	-	-	-	-	-	-	-	-	-	-	-	-	-	1	-	-	-	-	-	1
	Uzbekistan	1	-	-	-	-	-	-	-	-	-	-	-	-	-	-	-	-	-	-	-	-	-	-	-	-	1
N. Am	Canada	-	-	-	-	-	-	-	-	1	1	-	1	-	-	-	-	1	-	-	1	-	-	-	-	-	5
	U.S.A.	12	-	2	-	-	1	-	-	1	-	-	-	-	1	-	1	2	-	-	4	-	1	-	-	-	25
Central and South America	Brazil	-	1	-	1	-	-	-	-	-	3	-	2	-	-	-	-	4	1	-	-	-	-	1	-	-	13
	Columbia	-	-	-	-	-	-	-	-	-	-	-	1	-	-	-	-	-	-	-	-	-	-	1	-	-	2
	Costa Rica	-	-	-	-	-	-	1	-	-	-	-	-	-	-	-	-	-	-	-	-	-	-	-	-	-	1
	Cuba	-	-	-	-	-	-	-	-	-	-	-	1	-	-	-	-	-	-	-	-	-	-	-	-	-	1
	Guatemala	-	-	-	-	-	-	-	-	-	-	-	-	-	-	-	-	1	-	-	-	-	-	-	-	-	1
	Honduras	-	-	-	-	-	-	-	-	1	-	-	-	-	-	-	-	-	-	-	-	-	-	-	-	-	1
	Mexico	-	-	-	-	-	-	-	-	-	-	-	-	-	-	-	-	3	-	-	-	-	-	-	-	-	3
	Nicaragua	-	-	-	-	-	-	-	-	-	-	-	-	-	-	-	-	1	-	-	-	-	-	-	-	-	1
	Panama	-	1	-	-	-	-	-	-	-	1	-	-	-	-	-	-	-	-	-	-	-	-	-	-	-	2
	Peru	-	-	1	-	-	-	-	-	-	1	-	-	-	-	-	-	-	-	-	1	1	-	-	-	-	4
	Venezuela	1	-	-	-	-	-	-	-	-	-	-	-	-	-	-	-	-	-	-	-	-	-	-	-	-	1

International Student Numbers by Country / Region (con't)

AREA	COUNTRY	Letters	Law	Economics and Business	Medicine	Dental Medicine	Veterinary Medicine	Information Science and Technology	Fisheries Sciences	Environmental Science/Environmental Earth Science	Science	Pharmaceutical Sciences	Agriculture	Life Science / Advanced Life Science	Education	International Media, Comm. and Tourism Studies / Media and Comm.	Health Sciences	Engineering	Graduate School of Chemical Sciences and Engineering	Public Policy	Institute for the Advancement of Higher Education / First Year Education Division	Field Science Center for Northern Biosphere	Center for Advanced Tourism Studies	International Student Center	Institute for the Advancement of Higher Education	Slavic-Eurasian Research Center	TOTAL
Middle East	Iran	-	-	-	-	-	-	1	-	-	-	-	1	-	-	-	-	2	1	-	-	-	-	-	-	-	5
	Jordan	-	-	-	-	-	-	-	-	-	-	-	-	1	-	-	-	-	-	-	-	-	-	-	-	-	1
	Palestinian Authority	-	-	-	-	-	-	-	-	-	-	-	-	1	-	-	-	1	-	-	-	-	-	-	-	-	2
	Syria	-	-	-	-	-	-	2	-	-	-	-	-	-	-	-	-	-	-	-	-	-	-	-	-	-	2
	Turkey	-	-	-	-	-	-	-	-	-	-	-	-	-	-	-	-	-	-	-	-	-	-	1	-	-	1
Africa	Burkina Faso	-	-	-	-	-	-	-	-	-	-	-	-	-	1	-	-	2	-	-	-	-	-	-	-	-	3
	Benin	-	-	-	-	-	-	-	-	-	-	-	-	-	-	-	-	1	-	-	-	-	-	-	-	-	1
	Congo	-	-	1	-	-	-	-	-	-	-	-	-	-	-	-	-	-	-	-	-	-	-	-	-	-	1
	Cote d'Ivoire	-	-	-	-	-	-	-	-	-	-	-	-	-	-	-	-	1	-	-	-	-	-	-	-	-	1
	Egypt	-	-	-	1	-	6	2	-	2	2	-	1	-	-	-	-	2	1	-	-	-	-	2	-	-	19
	Eritrea	-	-	1	-	-	-	-	-	-	-	-	-	-	-	-	-	-	-	-	-	-	-	-	-	-	1
	Ethiopia	-	-	-	-	-	-	1	-	-	-	-	-	1	-	-	-	1	-	-	-	-	-	2	-	-	5
	Gabon	-	-	-	-	-	-	-	-	-	-	-	-	-	-	-	-	1	-	-	-	-	-	-	-	-	1
	Ghana	-	-	-	1	-	2	-	-	1	-	-	-	-	-	-	-	-	1	-	-	-	-	-	-	-	5
	Guinea	-	-	-	-	-	-	-	-	1	-	-	-	-	-	-	-	-	-	-	-	-	-	-	-	-	1
	Kenya	-	-	-	-	-	-	-	-	2	-	-	-	-	-	-	-	1	-	-	-	-	-	1	-	-	4
	Madagascar	-	-	1	-	-	-	-	-	1	-	-	-	-	-	-	-	-	-	-	-	-	-	-	-	-	2
	Malawi	-	-	-	-	-	-	-	-	-	-	-	-	-	-	-	-	1	-	-	-	-	-	-	-	-	1
	Mozambique	-	-	-	-	-	-	-	-	1	-	-	-	-	-	-	-	3	-	-	-	-	-	1	-	-	5
	Nigeria	-	-	-	1	-	1	-	-	-	2	-	3	-	-	-	-	1	-	-	-	-	-	-	-	-	8
	Tanzania	-	-	-	-	-	-	-	1	-	-	-	-	-	-	-	-	-	-	-	-	-	-	-	-	-	1
	Zambia	-	-	-	-	-	3	3	-	-	-	-	1	1	1	-	-	-	-	-	-	-	-	-	-	-	9
TOTAL (83 Countries / Regions)		245	72	85	30	6	47	100	51	134	60	0	124	59	56	89	10	222	58	17	38	1	1	63	1	1	1,570
International Student Numbers (other)		7	2	1	5	6	-	3	1	-	6	2	3	2	3	1	5	11	-	-	9	-	-	-	-	-	67

Data as of May 1, 2015

Distribution within Hokkaido University

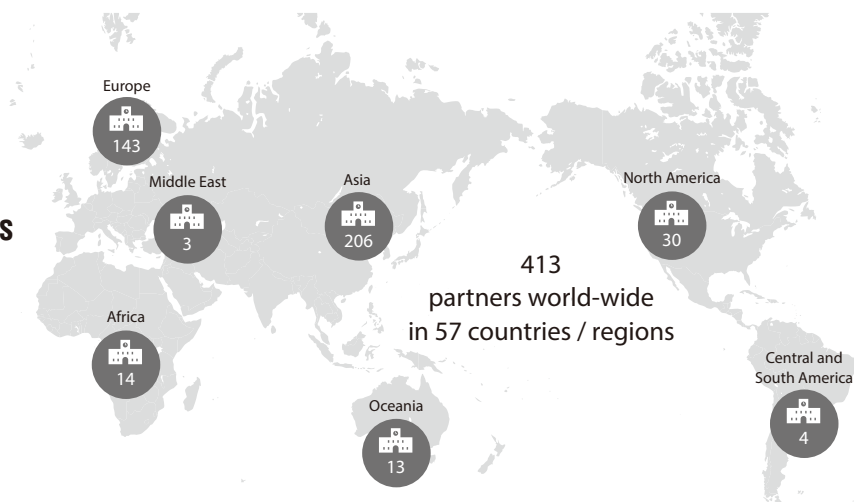
Faculties	Undergraduate	Master's Course	Graduate Professional Course	Doctoral Course	Research Students	Jpn Lang & Culture Studies Prog (JLCS)	Jpn Lang Class Students	Auditors	Total Int'l Students	Total Other Int'l Students	Combined Total
Graduate School / Faculty of Letters	1(1)	73(52)	-	63(40)	18(11)	-	-	90 (71)	245(175)	7(5)	252(180)
Graduate School / School of Law	1(1)	20(11)	-	23(7)	4(2)	-	-	24 (12)	72(33)	2(2)	74(35)
Graduate School / School of Economics and Business Administration	2(2)	50(34)	2	6(4)	10(7)	-	-	15(8)	85(55)	1	86(55)
Graduate School / School of Medicine	1(1)	4(4)	-	20(11)	1(1)	-	-	5(2)	31(19)	8(2)	39(21)
Graduate School / School of Dental Medicine	-	-	-	6(1)	-	-	-	-	6(1)	6(3)	12(4)
Graduate School / School of Veterinary Medicine	1(1)	-	-	44(23)	2(1)	-	-	-	47(25)	-	47(25)
Graduate School of Information Science and Technology	-	35(9)	-	48(11)	9(1)	-	-	8(1)	100(22)	3(1)	103(23)
Graduate School / Faculty / School of Fisheries Science	5(2)	12(7)	-	20(9)	1	-	-	13(6)	51(24)	1	52(24)
Graduate School / Faculty of Environmental Earth Science	-	59(27)	-	59(29)	16(9)	-	-	-	134(65)	-	134(65)
Graduate School / Faculty / School of Science	7(5)	19(7)	-	25(8)	-	-	-	9(6)	60(26)	6	66(26)
Faculty / School of Pharmaceutical Sciences	-	-	-	-	-	-	-	-	0(0)	2(1)	2(1)
Graduate School / Research Faculty / School of Agriculture	4(1)	31(14)	-	72(32)	4(2)	-	-	13(8)	124(57)	3	127(57)
Graduate School of Life Science / Faculty of Advanced Life Science	-	10(6)	-	43(17)	1	-	-	5(3)	59(26)	2	61(26)
Graduate School / Faculty / School of Education	4(3)	23(28)	-	9(5)	8(5)	-	-	3(2)	56(43)	3(2)	59(45)
Graduate School of Int'l Media, Communication and Tourism Studies Research Faculty of Media and Communication	-	61(48)	-	17(9)	11(9)	-	-	-	89(66)	1	90(66)
Graduate School / Research Faculty of Health Sciences	-	4(4)	-	4(1)	1(1)	-	-	-	9(6)	2(1)	11(7)
Graduate School / Faculty / School of Engineering	43(7)	51(13)	-	76(17)*	15(4)	-	-	37(12)	222(53)*	11(1)	233(54)
Graduate School of Chemical Sciences and Engineering	-	10(4)	-	45(21)	-	-	-	-	58(25)	-	58(25)
Graduate School / Faculty of Public Policy	-	-	12(9)	-	5(3)	-	-	-	17(12)	-	17(12)
First Year Education Division	38(18)	-	-	-	-	-	-	-	38(18)	9(2)	47(20)
SUBTOTAL	107(42)	471(268)	14(9)	580(245)	106(56)	0	0	225(131)	1,503(751)	67(20)	1,570(771)
Slavic-Eurasian Research Center	-	-	-	-	1(1)	-	-	-	1(1)	-	1(1)
Field Science Center for Northern Biosphere	-	-	-	-	1(1)	-	-	-	1(1)	-	1(1)
Center for Advanced Tourism Studies	-	-	-	-	1	-	-	-	1(0)	-	1(0)
Office of International Affairs	-	-	-	-	3(2)	50(37)	10(3)	-	63(42)	-	63(42)
Institute for the Advancement of Higher Education	-	-	-	-	1	-	-	-	1(0)	-	1(0)
SUBTOTAL	0(0)	0(0)	0(0)	0(0)	7(4)	50(37)	10(3)	0(0)	67(44)	0(0)	67(44)
GRAND TOTAL	107(42)	471(268)	14(9)	580(245)	113(60)	50(37)	10(3)	225(131)	1,570 (795)	67(20)	1,637(815)**

*number includes one student enrolled under prior graduate organization (prior to 2010.4) () indicate number of women

**includes total other international students

Distribution Map of the Counterpart Universities

(University and Departmental)



Inter-University Exchange Agreements (160 Agreements, 166 Universities in 43 Countries / Regions)

Hokkaido University has concluded agreements for academic and educational exchange and cooperation with universities abroad as follows :

Countries / Regions		Counterparts	Concluded
Asia	Bangladesh	University of Dhaka	December 24, 2009 *
	China	University of Science and Technology Beijing	December 26, 1986 *
		Zhejiang University	January 20, 2002 *
		Peking University	February 19, 2003 *
		Fudan University	August 3, 2004 *
		Jilin University	September 22, 2004 *
		Nankai University	May 11, 2006 *
		Nanjing University	May 11, 2006 *
		Xi'an Jiaotong University	May 26, 2008 *
		Tsinghua University	June 30, 2008 *
		Northeast Normal University	May 8, 2009 *
		Sichuan University	October 15, 2009 *
		Wuhan University	November 30, 2009 *
		Dalian University of Technology	January 20, 2010 *
		Beijing Normal University	January 20, 2010 *
		Lanzhou University	April 9, 2010 *
		Southeast University	October 29, 2010 *
		Xiamen University	November 25, 2010 *
		Shanghai Ocean University	December 1, 2010 *
		Ocean University of China	February 3, 2011 *
		Chinese University of Hong Kong	September 30, 2011 *
		Northwest Agriculture and Forestry University	October 13, 2011 *
		Shanghai Jiao Tong University	October 19, 2011 *
		Huazhong University of Science and Technology	December 27, 2012 *
		Hunan University	October 10, 2013 *
		City University of Hong Kong	July 16, 2014 *
	India	University of Delhi	February 26, 2010 *
		University of Mysore	January 29, 2015 *
	Indonesia	University of Palangka Raya	August 26, 2006 *
		Bogor Agricultural University	July 29, 2009 *
		Universitas Gadjah Mada	July 23, 2010 *
		Institut Teknologi Bandung	March 20, 2014 *
	Korea	Seoul National University	October 1, 1997 *
		Chonbuk National University	February 9, 2000 *
		Yeungnam University	August 4, 2000 *
		Pukyong National University	October 25, 2000 *
		Chungnam National University	July 9, 2001 *
		Kangwon National University	June 13, 2003 *
		Chungbuk National University	December 6, 2007 *
		Hankyong National University	February 16, 2009 *
		Dong-eui University	April 23, 2009 *

* the exchange of students is included in the Exchange Agreement

Inter-University Exchange Agreements (con't)			
Countries / Regions		Counterparts	Concluded
Asia	Korea	Korea Maritime University	June 3, 2010 *
		Korea University	October 15, 2010 *
		Yonsei University	December 6, 2010 *
		Kongju National University	August 2, 2011 *
		University of Incheon	April 16, 2012 *
		Hanyang University	July 10, 2012 *
		Sungkyunkwan University	December 27, 2012 *
		University of Seoul	September 23, 2013 *
	Malaysia	Universiti Sains Malaysia	June 7, 2010 *
	Mongolia	Mongolian State University of Agriculture	January 26, 2009 *
		National University of Mongolia	December 22, 2011 *
	Nepal	Tribhuvan University	October 24, 2010 *
	Philippines	De La Salle University	January 11, 2009 *
		University of the Philippines	July 16, 2014 *
	Sri Lanka	University of Peradeniya	November 14, 2006 *
	Taiwan	National Taiwan University	March 3, 2005 *
		Academia Sinica	September 11, 2008 *
		National Chung Cheng University	November 4, 2009 *
		TamKang University	November 29, 2010 *
		National Chung Hsing University	March 14, 2012 *
		National Tsing Hua University	August 17, 2012 *
		National Cheng Kung University	January 23, 2013 *
		National Chiao Tung University	March 22, 2013 *
		National Taiwan Normal University	July 8, 2013 *
		National Taiwan Ocean University	April 23, 2014 *
		National Chengchi University	June 19, 2014 *
	Thailand	Asian Institute of Technology	November 4, 2008 *
		Mahidol University	November 26, 2008 *
		Kasetsart University	January 6, 2009 *
		Chulalongkorn University	July 3, 2009 *
		King Mongkut's University of Technology Thonburi	December 24, 2013 *
		Thammasat University	January 30, 2014 *
	Vietnam	King Mongkut's Institute of Technology Ladkrabang	May 30, 2014 *
		Vietnam National University Ho Chi Minh City	February 23, 2010 *
		VNU University of Science	March 1, 2013 *
		Can Tho University	March 1, 2013 *
		Vietnam National University Ho Chi Minh City University of Technology	March 1, 2013 *
Middle East	Saudi Arabia	King Abdulaziz University	July 8, 2010 *
Oceania	Australia	University of Tasmania	January 9, 2009 *
		Australian National University	June 14, 2012 *
		University of New South Wales	November 5, 2012 *
		University of Sydney	April 30, 2013 *
		University of the Sunshine Coast	August 19, 2013 *
		Murdoch University	January 30, 2014 *
	New Zealand	University of Auckland	July 25, 2003 *
		GNS Science	February 28, 2014 *
Europe	Belgium	Ghent University	June 13, 2013 *
	Denmark	Aarhus University	February 27, 2014 *
	Estonia	University of Tartu	October 28, 2008 *
	Finland	University of Oulu	December 11, 2001 *
		University of Helsinki	March 11, 2011 *
		University of Lapland	June 8, 2011 *
		Aalto University	July 5, 2013 *
		University of Turku	May 21, 2014 *
		University of Eastern Finland	February 2, 2015 *
	France	Université de Strasbourg	October 10, 2000 *
		For the Consortium of Universities of Grenoble: Université Joseph Fourier, Université Pierre Mendès France, Université Stendhal, Institut National Polytechnique de Grenoble, Institut d'Etudes Politiques de Grenoble, Université de Savoie	October 10, 2000 *
		Rennes Institute of Political Studies	September 4, 2002 *
		Fondation Nationale des Sciences Politiques	May 18, 2007 *

Data as of May 1, 2015

Inter-University Exchange Agreements (con't)			
Countries / Regions		Counterparts	Concluded
Europe	France	École Polytechnique	June 29, 2008
		École Supérieure de Physique et de Chimie Industrielles de Paris	March 31, 2009 *
		Université de la Méditerranée (Aix-Marseille II)	May 18, 2009
	Germany	École Nationale Supérieure de Mécanique et d'Aérotechnique	March 25, 2013 *
		Ludwig-Maximilians-Universität München	January 31, 1983 *
		University of Bremen	February 11, 2010 *
		Technische Universität München	July 6, 2010 *
		Universität Heidelberg	April 23, 2014 *
	Hungary	Budapest University of Technology and Economics	November 4, 2004 *
	Ireland	University College Dublin	November 5, 2014
	Italy	Politecnico di Torino	July 1, 2008 *
	Latvia	University of Latvia	February 24, 2015 *
	Lithuania	Vilnius University	December 9, 2014 *
	Norway	University of Bergen	October 10, 2013 *
	Poland	AGH University of Science and Technology	July 6, 2010 *
		Warsaw University of Technology	August 8, 2014 *
		University of Warsaw	March 13, 2015 *
	Romania	University of Bucharest	April 23, 2014 *
	Serbia	University of Belgrade	May 10, 2011 *
	Spain	University of Barcelona	November 5, 2014 *
		University of Lleida	March 13, 2015 *
	Sweden	KTH Royal Institute of Technology	January 20, 2010 *
		Umeå University	August 20, 2013 *
	Switzerland	University of Geneva	June 7, 2005 *
		Swiss Federal Institute of Technology Zurich (ETH Zurich)	June 13, 2007 *
	U.K.	University of Warwick	January 5, 2000 *
		University of Sheffield	October 5, 2010 *
		University of Edinburgh	February 23, 2011 *
		Newcastle University	March 1, 2013 *
		University of East Anglia	June 26, 2013 *
		University of Aberdeen	May 21, 2014
	Kazakhstan	Al-Farabi Kazakh National University	August 1, 2011 *
	Russia	Lomonosov Moscow State University	October 10, 2001 *
		Sakhalin State University	October 23, 2007 *
		Far Eastern Federal University	November 12, 2007 *
		Far Eastern Branch of the Russian Academy of Sciences	July 23, 2009
		Irkutsk State University	March 30, 2010 *
		North-Eastern Federal University	April 2, 2012 *
		Saint Petersburg State University	April 18, 2013 *
North America	Canada	Pacific National University	December 25, 2014 *
		University of Alberta	August 13, 1997 *
	U.S.A.	University of British Columbia	June 29, 2008 *
		Portland State University	December 19, 1972 *
		University of Massachusetts	September 14, 1976 *
		Cornell University	June 16, 1982
		University of Alaska	December 20, 1986 *
		University of Wisconsin-Madison	April 21, 1987 *
		Ohio State University	September 1, 1998 *
		University of Oregon	August 17, 2006 *
		University of California, Los Angeles	June 29, 2008
		University of Hawai'i at Manoa	June 30, 2003 *
		University of Hawai'i at Hilo	June 30, 2003 *
		University of Oklahoma	March 25, 2010 *
South America	Brazil	Universidade de São Paulo	April 1, 2009 *
		Universidade Federal do Rio Grande do Sul	November 8, 2013 *
Africa	Nigeria	University of Nigeria, Ebonyi State University	January 30, 2009 *
	South Africa	University of Johannesburg	June 29, 2008 *
		North-West University	February 5, 2014 *
	Zambia	University of Zambia	March 18, 2011 *
		Copperbelt University	February 6, 2013 *

* indicates an Academic Exchange Agreement and Memorandum of Understanding on Student Exchange exist

Data as of May 1, 2015

Memoranda Based on Inter-University Agreements (53 Memoranda in 14 Countries)

Countries / Regions		Counterparts	Hokkaido University	Exchange contents	Concluded	
Asia	China	Institute of Mathematics, Fudan University	Graduate School of Science	Academic exchange	January 1, 2004	
		Peking University Library	University Library	Shared use	April 1, 2005	
		University of Science and Technology Beijing	Graduate School of Engineering	Academic exchange	November 24, 2005	
		Peking University Law School	Research Institute for Information Law & Policy	Academic exchange	March 11, 2010	
		School of Mathematics and Statistics, Northeast Normal University	Graduate School of Science	Double degree program	February 20, 2011	
		Institute of Life Sciences, Zhejiang University	Graduate School of Environmental Science, CENSUS	StraSS program, student exchange	February 21, 2011	
		Department of Mathematics, Southeast University	Graduate School of Science	Double degree program	March 9, 2011	
		Department of Material Science and Engineering, Department of Engineering Physics, Department of Chemical Engineering, Tsinghua University	School of Engineering, Graduate School of Engineering, Graduate School of Chemical Sciences and Engineering	Academic exchange	March 20, 2012	
		Faculty of Education, Beijing Normal University	Faculty of Education	Academic exchange	December 26, 2014	
	Indonesia	Faculty of Veterinary Medicine, Bogor Agricultural University	Research Center for Zoonosis Control	Academic exchange	October 14, 2010	
		College of Commerce and Economics, Yeungnam University	Graduate School of Economics and Business Administration	Academic exchange	September 27, 2001	
	Korea	College of Engineering, Chungbuk National University	Faculty of Engineering, Graduate School of Engineering, School of Engineering	Academic exchange, student exchange	December 6, 2007	
		Center for Space-Time Molecular Dynamics, Seoul National University	Institute of Low Temperature Science	Academic exchange	June 30, 2009	
		College of Business and Economics, Yonsei University	Graduate School of Economics and Business Administration	Joint seminar	November 22, 2010	
		College of Engineering, Seoul National University	School of Engineering, Graduate School of Engineering, Graduate School of Information Science and Technology	Student exchange	January 17, 2011	
			Graduate School of Engineering, Graduate School of Information Science and Technology	Double degree program	July 31, 2011	
		College of Education, Korea University	School of Education	Academic exchange	October 31, 2011	
		College of Fisheries Science, Pukyong National University	Graduate School of Fisheries Sciences and School of Fisheries Sciences	Student exchange	December 26, 2011	
		College of Education, Kongju National University	Graduate School of Education	Student exchange	February 7, 2012	
		College of Education, Seoul National University	Faculty of Education	Academic exchange	July 14, 2014	
		Malaysia	College of Engineering, Dong-Eui University	Faculty of Engineering, Graduate School of Engineering	Academic exchange	December 10, 2014
			School of Materials and Mineral Resources Engineering, Universiti Sains Malaysia	Faculty of Engineering, Graduate School of Engineering, School of Engineering	Internship	December 30, 2014
		Taiwan	Institute of Sociology, Academia Sinica	Graduate School of Letters	Academic exchange	April 2, 2013
			National Taiwan University Hospital	Hokkaido University Hospital	Academic exchange	February 12, 2014
	College of Engineering, National Taiwan University		Graduate School of Chemical Sciences and Engineering, Graduate School of Environmental Science, Graduate School of Science, Graduate School of Life Science, Graduate School of Engineering	Student exchange	March 6, 2014	
	Research Center for Applied Sciences, Academia Sinica		Research Institute for Electronic Science	Academic exchange	December 22, 2014	
	College of Social Sciences, National Taiwan University		Graduate School of Economics and Business Administration, School of Economics and Business Administration	Academic exchange, student exchange	December 22, 2014	
	College of Veterinary Medicine, National Chung Hsing University		Research Center for Zoonosis Control	Academic exchange	September 29, 2014	
	Institute of Physics, Academia Sinica		Research Institute for Electronic Science	Academic exchange	March 23, 2015	
	Faculty of Public Health, Mahidol University		Research Center for Zoonosis Control	Academic exchange	November 26, 2008	
	School of Engineering and Technology, Asian Institute of Technology		Graduate School of Engineering	Double degree program	March 17, 2011	
	School of Environment, Resources and Development, Asian Institute of Technology		Faculty of Fisheries Sciences	Shared education	June 29, 2011	
	Thailand		Faculty of Engineering, Chulalongkorn University	Faculty and Graduate School of Engineering, School of Engineering, Graduate School of Information Science and Technology, and Graduate School of Chemical Sciences and Engineering	Internship	September 5, 2011
			Faculty of Veterinary Science, Mahidol University	Research Center for Zoonosis Control	Academic exchange	February 22, 2012
			Faculty of Medicine Siriraj Hospital, Mahidol University	Research Center for Zoonosis Control	Academic exchange	February 22, 2012
		Faculty of Engineering, Kasetsart University	Faculty of Engineering, Graduate School of Engineering, School of Engineering, Graduate School of Information Science and Technology, and Graduate School of Chemical Sciences and Engineering	Internship	February 21, 2014	
			Faculty of Education, Chulalongkorn University	Faculty of Education	Academic exchange	May 12, 2014
			Faculty of Public Health, Thammasat University	Research Center for Zoonosis Control	Academic exchange	January 20, 2015
		Europe	Denmark	Department of Dentistry, Graduate School of Health, Aarhus University	Graduate School of Dental Medicine	Double degree program
	Germany		Faculty of Veterinary Medicine, Ludwig-Maximilians-Universität München	Graduate School of Veterinary Medicine	Academic exchange, student exchange	January 10, 2011
	Kazakhstan		Physico-Technical Faculty, Al-Farabi Kazakh National University	Graduate School of Science	Double degree program	February 29, 2012
	Poland		AGH University of Science and Technology	Graduate School of Engineering	Double degree program	July 6, 2010
			Graduate School of Chemical Sciences and Engineering	Double degree program	November 22, 2011	
	Russia		Institute of Biology and Soil Science, Far Eastern Branch of Russian Academy of Sciences	Faculty of Science	Academic exchange	October 14, 2013
	Switzerland		Pacific Geographical Institute, Far Eastern Branch of Russia Academy of Sciences	Institute of Low Temperature Science	Academic exchange	March 7, 2014
	North America	Canada	The Material Research Center, Swiss Federal Institute of Technology Zurich (ETH Zurich)	Graduate School of Engineering	Academic exchange	March 4, 2008
			Fisheries Centre, University of British Columbia	Graduate School of Fisheries Science	Student exchange	March 1, 2011
		U.S.A.	School of Fisheries and Ocean Sciences, University of Alaska Fairbanks	School of Fisheries Sciences	Academic exchange	September 12, 1986
			School of Education, Portland State University	School of Education	Academic exchange	December 12, 1989
			The Museum of the North, University of Alaska Fairbanks	Hokkaido University Museum	Academic exchange	November 1, 2005
			College of Veterinary Medicine, Cornell University	Graduate School of Veterinary Medicine	Internship	March 25, 2013
			University of Massachusetts Amherst Library	Hokkaido University Library	Library exchange	August 4, 2014

* indicates an Academic Exchange Agreement and Memorandum of Understanding on Student Exchange exist

◎ indicates only a Memorandum of Understanding on Student Exchange exists

Departmental Exchange Agreements (253 Agreements in 45 Countries / Regions)

Countries / Regions		Counterparts		Hokkaido University	Concluded
Asia	Bangladesh	Jahangirnagar University	Faculty of Mathematical and Physical Sciences	Faculty of Environmental Earth Science	January 26, 2012
	China	Peking Union Medical College		School of Medicine	July 14, 1994
					February 26, 1985
		Harbin Medical University	School of Stomatology	Graduate School of Dental Medicine	June 5, 2000
			No. 4 Clinical Medicine College		September 21, 2005
		China Medical University	College of Stomatology		January 29, 2001
		Shenyang University of Technology		Faculty of Engineering	June 24, 1985
		Shanghai Jiao Tong University	School of Engineering	Graduate School of Engineering	November 23, 1992
		Northeast Agricultural College		Faculty of Agriculture	June 2, 1986
		Shenyang Agricultural University			November 5, 1986
		Northeast Forestry University			December 31, 1986
		Jilin University	Law School	Graduate School of Law	November 10, 1998 *
		Dalian Fisheries University		Graduate School of Fisheries Sciences, Faculty of Fisheries Sciences and School of Fisheries Sciences	September 15, 2000 *
		Chinese Academy of Social Sciences	Institute of East European, Russian and Central Asian Studies	Slavic-Eurasian Research Center	September 13, 1994
		China University of Petroleum	School of Chemical Engineering	Institute for Catalysis	December 7, 2001
		East China Normal University	Department of Chemistry		March 18, 2005
		Xiamen University	State Key Laboratory of Physical Chemistry of Solid Surfaces	Institute for Catalysis	October 9, 2007
		Chinese Academy of Sciences - Dalian Institute of Chemical Physics	State Key Laboratory of Catalysis		October 10, 2007
		Hebei Polytechnic University		Graduate School of Engineering	March 10, 2008 *
		University of Hong Kong	Li Ka Shing Faculty of Medicine	Graduate School of Medicine and School of Medicine	January 30, 2008 *
		Harbin Engineering University	Engineering Faculty	Faculty of Engineering, Graduate School of Engineering, Graduate School of Chemical Sciences and Engineering	August 18, 2008 *
		East China University of Science and Technology	School of Law	Graduate School of Law, School of Law	July 3, 2008 *
		Institute of Journalism and Communication, Chinese Academy of Social Sciences		Research Faculty of Media and Communication, Graduate School of International Media, Communication, and Tourism Studies	February 19, 2009 *
		Zhongnan University of Economics and Law	Law School	Graduate School of Law, School of Law	March 6, 2009 *
		Nanjing Normal University	School of Law	Graduate School of Law, School of Law	May 15, 2009 *
		Harbin Institute of Technology		Graduate School of Engineering	August 11, 2009 *
		Huazhong University of Science and Technology	School of Law	Graduate School of Law	October 26, 2009 *
		Heilongjiang Provincial Academy of Social Sciences		Slavic-Eurasian Research Center	June 14, 2010
		Renmin University of China	Law School	Graduate School of Law, School of Law	October 1, 2010 *
			School of Education	Faculty of Education, Graduate School of Education	March 28, 2013 *
		Xi'an University of Architecture and Technology		Graduate School of Engineering	June 12, 2010 *
		Southeast University	Department of Mathematics	Faculty of Science	August 15, 2010
		Northeastern University		Faculty of Engineering, Graduate School of Engineering, School of Engineering	March 9, 2011 *
		Forestry Research Science Institute of Heilongjiang Province		Field Science Center for Northern Biosphere	October 19, 2011
		Sichuan Agricultural University			June 18, 2012 *
		Chinese Academy of Sciences	Northeast Institute of Geography and Agroecology	Research Faculty of Agriculture, Graduate School of Agriculture and Faculty of Agriculture	July 3, 2012 *
		Yunnan Agricultural University			July 26, 2012 *
		Fujian Academy of Agricultural Sciences			November 13, 2012 *
		South China University of Technology	College of Light Industry and Food Sciences	Faculty of Advanced Life Science, Graduate School of Life Science	December 20, 2012 *
		Beijing Forestry University		Research Faculty of Agriculture, Graduate School of Agriculture and School of Agriculture	June 5, 2013 *
		Southwest University	College of Resources and Environment		December 16, 2013 *
		Inner Mongolia Agricultural University	College of Agricultural		January 6, 2014 *
		Chongqing University	Faculty of Engineering	Faculty of Engineering, Graduate School of Engineering, School of Engineering	March 7, 2014 *
		Wuhan University of Technology	School of Mechanical and Electrical Engineering	Faculty of Engineering, Graduate School of Engineering, School of Engineering	March 28, 2014 *
			School of Civil Engineering and Architecture		
		Huazhong Agricultural University	College of Resources and Environment	Research Faculty of Agriculture, Graduate School of Agriculture, School of Agriculture	June 25, 2014 *
		Nanjing Agricultural University			December 30, 2014 *
	India	Bharathidasan University	Department of Animal Science	Graduate School of Veterinary Medicine	August 23, 2010

* indicates an Academic Exchange Agreement and Memorandum of Understanding on Student Exchange exist

Departmental Exchange Agreements (con't)

Countries / Regions		Counterparts		Hokkaido University	Concluded
Asia	India	Indian Institute of Technology Guwahati	Department of Biosciences and Bioengineering	Research Faculty of Agriculture, Graduate School of Agriculture, School of Agriculture	April 28, 2015 *
	Indonesia	Institute of Technology Bandung	Faculty of Civil Engineering and Planning	Graduate School of Engineering	August 11, 2000 *
		Islamic University of Indonesia	Faculty of Civil Engineering and Planning	Faculty of Environmental Earth Science	December 11, 2008
		University of Palangka Raya		Center for Sustainability Science	November 5, 2009 *
		Sriwijaya University	Faculty of Agriculture	Research Faculty of Agriculture, Graduate School of Agriculture and Faculty of Agriculture	September 23, 2010 *
		Padjadjaran University	Faculty of Geology	Hokkaido University Museum	February 24, 2011
		Indonesian Institute of Sciences	Research Center for Biology		February 25, 2011
		Diponegoro University	Faculty of Medicine		December 4, 2012 *
		Dr. Kariadi Hospital		Faculty of Health Sciences, Graduate School of Health Sciences	
	Korea	Chonnam National University	College of Agriculture	Graduate School of Agriculture	January 24, 2002
			College of Fisheries and Ocean Science	Graduate School of Fisheries Sciences, Faculty of Fisheries Sciences and School of Fisheries Sciences	August 27, 2007 *
		Kyungpook National University	College of Veterinary Medicine	Graduate School of Veterinary Medicine and School of Veterinary Medicine	December 19, 2000
		Cheju National University	College of Ocean Science	Graduate School of Fisheries Sciences, Faculty of Fisheries Sciences and School of Fisheries Sciences	December 17, 2002 *
		Gyeongsang National University	College of Marine Science		December 15, 2003 *
		Kyung Hee University	College of Life Sciences	Field Science Center for Northern Biosphere	February 25, 2004
		Kunsan National University	College of Ocean Science and Technology	Graduate School of Fisheries Sciences, Faculty of Fisheries Sciences and School of Fisheries Sciences	August 29, 2005 *
		Kangnung-Wonju National University	College of Life Science	Graduate School of Fisheries Sciences, Faculty of Fisheries Sciences and School of Fisheries Sciences	July 1, 2007 *
		Korea University	College of Education, Graduate School of Education	Information Initiative Center	July 23, 2009
		Seoul Women's University	College of Natural Sciences	Research Faculty of Agriculture, Graduate School of Agriculture and Faculty of Agriculture	June 11, 2010 *
		Kyung Hee University	Law School	Graduate School of Law	March 29, 2011
		University of Incheon	College of Engineering	Faculty of Engineering, Graduate School of Engineering	May 26, 2011
			College of Urban Sciences		
		Hansung University	College of Arts	Information Initiative Center	July 29, 2011
		Hanyang University	College of Engineering Science	Faculty of Engineering, Graduate School of Engineering, School of Engineering	September 19, 2011 *
		National Institute of Biological Resources		Hokkaido University Museum	February 9, 2012
		Korea Advanced Institute of Science and Technology	College of Natural Sciences	Faculty of Science, Graduate School of Science, School of Science	March 16, 2015 *
		Gangneung-Wonju National University	College of Dentistry	Graduate School of Dental Medicine	April 20, 2015
	Malaysia	University Pertanian Malaysia	Faculty of Fisheries and Marine Science	School of Fisheries Sciences	May 29, 1990
		International Islamic University Malaysia	Faculty of Engineering	Faculty of Engineering, Graduate School of Engineering, Graduate School of Information Science and Technology, Graduate School of Chemical Sciences and Engineering	November 12, 2012 *
		Universiti Malaysia Sabah	Institute for Tropical Biology and Conservation	Faculty of Environmental Earth Science, Graduate School of Environmental Science	February 5, 2014 *
	Mongolia	Institute of Geography of Mongolian Academy of Sciences			February 18, 2009
		Institute of Meteorology and Hydrology Ministry of Nature and Environment		Faculty of Environmental Earth Science, and Research Faculty of Agriculture	February 12, 2009
		National University of Mongolia	School of Art and Sciences, School of Applied Sciences and Engineering		February 18, 2009
			Nuclear Research Center	Faculty of Science	September 21, 2010
		Mongolian Academy of Sciences	Paleontological Center	Hokkaido University Museum	August 15, 2011
	Myanmar	National Center for Zoonotic Diseases, Ministry of Health		Graduate School of Veterinary Medicine	January 17, 2014
		University of Veterinary Science		Graduate School of Veterinary Medicine	October 7, 2013
		Ministry of Health		Research Center for Zoonosis Control	June 10, 2013
	Philippines	Philippine Carabao Center		Research Center for Zoonosis Control	December 5, 2009
		University of the Philippines Diliman	College of Engineering	Graduate School of Information Science and Technology	April 28, 2010 *
		International Rice Research Institute		Research Faculty of Agriculture, Graduate School of Agriculture, Faculty of Agriculture	March 10, 2015
	Singapore	National University of Singapore	Faculty of Arts and Social Sciences	Graduate School of Letters	August 8, 2006 *
			Faculty of Science	Faculty of Fisheries Sciences	March 24, 2014
	Taiwan	National Taiwan University	College of Social Science	Graduate School of Law, School of Law	January 28, 2000 *
			College of Law		October 20, 2000 *
		National Chengchi University	College of Law	Graduate School of Law, School of Law, Graduate School of Public Policy and	July 28, 2005 *
			College of Social Sciences		

* indicates an Academic Exchange Agreement and Memorandum of Understanding on Student Exchange exist

Departmental Exchange Agreements (con't)					
Countries / Regions		Counterparts		Hokkaido University	Concluded
Asia	Taiwan	National Chengchi University	College of International Affairs	Faculty of Public Policy	July 28, 2005 *
			Center for Aboriginal Studies	Center for Ainu & Indigenous Studies	October 18, 2007
			College of Liberal Arts	Graduate School of Letters	March 17, 2014
		National Taiwan Normal University	Institute of Optoelectronics Science and Technology	Research Institute for Electronic Science	January 28, 2008
				Graduate School of Fisheries Sciences, Faculty of Fisheries Sciences and School of Fisheries Sciences	August 20, 2008 *
		National Taiwan Ocean University	College of Life Sciences	Graduate School of Law	March 11, 2008
		National University of Kaohsiung	College of Law	Center for Sustainability Science, Graduate School of Environmental Science	September 2, 2010 *
			Sustainable Environment Research Center	Faculty of Science	October 4, 2011
		National Cheng Kung University	Department of Environmental Engineering	Research Institute for Electronic Science	January 24, 2011
		National Chiao Tung University	College of Sciences	Faculty of Public Policy	September 27, 2011
			College of Science	Faculty of Education	March 1, 2012
		National Taipei University	Department of Public Administration and Policy	Faculty of Environmental Earth Science, Graduate School of Environmental Science	June 25, 2012 *
		National Taiwan Normal University	Science Education Center	Graduate School of Medicine, School of Medicine, Faculty of Health Sciences, Graduate School of Health Sciences	December 21, 2012 *
			College of Medicine	Graduate School of Letters	February 25, 2014
			College of Nursing	Hokkaido University Hospital	July 14, 2014
		Fu Jen Catholic University	College of Public Health and Nutrition	Hokkaido University Museum	July 29, 2014
			College of Medical Science and Technology	Graduate School of Law	September 26, 2014
	Thailand	National Museum of Marine Biology & Aquarium	College of Foreign Languages	Faculty of Pharmaceutical Sciences, School of Pharmaceutical Sciences and Pharmacy	November 27, 2014 *
		Taipei Medical University	Shuang Ho Hospital	Faculty of Public Policy	March 11, 2015
			College of Marine Sciences	Graduate School of Letters	November 30, 2004 *
		National Dong Hwa University	College of Marine Sciences	Graduate School of Fisheries Sciences, Faculty of Fisheries Sciences and School of Fisheries Sciences	February 18, 2006
		Judges Academy Taiwan	College of Pharmacy	Faculty of Engineering, Graduate School of Engineering	May 15, 2007 *
		Southeast Asian Fisheries Development Center	Sirindhorn International Institute of Technology	Graduate School of Information Science and Technology	July 1, 2007
				Research Faculty of Agriculture, Graduate School of Agriculture	March 24, 2009
				Faculty of Fisheries Sciences	December 12, 2009
		Thammasat University	Faculty of Humanities and Social Sciences	Research Center for Zoonosis Control	December 25, 2014
		National Telecommunications Commission	Faculty of Geology and Petroleum Engineering, Faculty of Civil Engineering	Faculty of Science, Graduate School of Science	March 17, 2015 *
		Agricultural Research Development Agency	Faculty of Engineering, Graduate School of Engineering, School of Engineering, Graduate School of Information Science and Technology, Graduate School of Chemical Sciences and Engineering	Faculty of Engineering, Graduate School of Engineering, Graduate School of Information Science and Technology, Graduate School of Chemical Sciences and Engineering	April 28, 2015
		Walailak University	Faculty of Engineering, Graduate School of Engineering, Graduate School of Information Science and Technology, Graduate School of Chemical Sciences and Engineering	Faculty of Engineering, Graduate School of Engineering, Graduate School of Information Science and Technology, Graduate School of Chemical Sciences and Engineering	April 28, 2015
Oceania	Australia	Queensland University of Technology		Graduate School of Engineering, Graduate School of Information Science and Technology, Graduate School of Chemical Sciences and Engineering	August 6, 2012
		University of Melbourne	Department of Microbiology and Immunology	Research Center for Zoonosis Control	July 29, 2014
		Curtin University		Faculty of Engineering, Graduate School of Engineering, School of Engineering	August 29, 2014
		University of Western Sydney		Research Faculty of Agriculture, Graduate School of Agriculture, School of Agriculture	October 7, 2014
	New Zealand	Lincoln University		Research Faculty of Agriculture, Graduate School of Agriculture, School of Agriculture	August 6, 2014 *
Europe	Belgium	Katholieke Universiteit Leuven	Faculty of Science	Research Institute for Electronic Science	July 20, 2013
	Bulgaria	Trakia University	Faculty of Agriculture	Faculty of Science, Graduate School of Science, School of Science	March 19, 2014 *
	Croatia	University of Zagreb	Faculty of Humanities and Social Sciences	Graduate School of Letters	February 18, 2009 *
		Charles University in Prague	First Faculty of Medicine	Graduate School of Medicine, School of Medicine	September 8, 2008
	Czech	University of South Bohemia	Faculty of Fisheries and Protection of Waters	Graduate School of Fisheries Sciences, Faculty of Fisheries Sciences and School of Fisheries Sciences	June 29, 2010 *
			School of Architecture	Graduate School of Engineering	March 31, 2010 *
	Denmark	Royal Danish Academy of Fine Arts	Niels Bohr Institute	Institute of Low Temperature Science	January 25, 2012
		University of Copenhagen	Department of Dentistry	Graduate School of Dental Medicine	November 12, 2012
	Finland	Tampere University of Applied Sciences		Faculty of Engineering, Graduate School of Engineering, Graduate School of Chemical Sciences and Engineering	January 12, 2011 *
	France	University of Poitiers	Faculty of Law	School of Law	October 15, 1993
		National Institute of Oriental Languages and Civilizations	Center of Russians and Eurasians Studies	Slavic-Eurasian Research Center	September 25, 1983

* indicates an Academic Exchange Agreement and Memorandum of Understanding on Student Exchange exist

Departmental Exchange Agreements (con't)					
Countries / Regions		Counterparts		Hokkaido University	Concluded
Europe	France	Ecole Pratique des Hautes Etudes		Graduate School of Letters	June 30, 2005
		Ecole Normale Supérieure de Lyon		Research Institute for Electronic Science	March 26, 2010
		Musée Zoologique de la ville de Strasbourg		Hokkaido University Museum	November 20, 2009
		Ecole Nationale Supérieure de Mécanique et D'Aérotechnique		Faculty of Engineering, Graduate School of Engineering	January 18, 2011
		Université Lille 1 et Ecole Centrale de Lille	Unité de Catalyse et de Chimie du Solide	Institute for Catalysis	January 17, 2011
		Ecole Supérieure des Technologies Industrielles Avancées		Graduate School of Information Science and Technology, Faculty of Engineering, Graduate School of Engineering	October 11, 2011
		Centre National de Recherches Météorologiques		Institute of Low Temperature Science	March 26, 2012
	Germany	Université Paris Diderot		Graduate School of Letters, Faculty of Letters	December 18, 2014
		Fritz-Haber Institute of the Max Planck Society		Institute for Catalysis	December 26, 2005
		Alfred Wegener Institute for Polar and Marine Research		Institute of Low Temperature Science	March 3, 2009
		Max-Planck Institute for Marine Microbiology			March 4, 2009
		Senckenberg Forschungsinstitute und Naturmuseen		Hokkaido University Museum	November 18, 2009
		Otto-von-Guericke-Universität Magdeburg		Research Institute for Electronic Science	September 13, 2010
		Max-Planck Institute for Terrestrial Microbiology		Institute of Low Temperature Science	January 19, 2012
		GEOMAR Helmholtz Centre for Ocean Research Kiel		Faculty of Environmental Earth Science, Graduate School of Environmental Science	May 31, 2012
		Free University of Berlin	Faculty of Veterinary Medicine	Graduate School of Veterinary Medicine	July 25, 2012
		Technische Universität Berlin	School of Process Sciences	Faculty of Engineering, Graduate School of Engineering, School of Engineering	December 3, 2013
			School of Electrical Engineering and Computer Science		
			School of Mechanical Engineering and Transport Systems		
			Faculty of Mathematics and Natural Sciences		
		Christian-Albrechts-Universität zu Kiel	Faculty of Mathematics and Natural Sciences	Faculty of Science, Graduate School of Science	March 5, 2014
		Universität Hamburg	Faculty of Mathematics, Informatics and Natural Sciences	Graduate School of Chemical Sciences and Engineering, Faculty of Engineering, Graduate School of Engineering, School of Engineering, Graduate School of Information Science and Technology	March 21, 2014
				Faculty of Engineering, Graduate School of Engineering, School of Engineering	April 30, 2015
				Technische Fachhochschule Georg Agricola zu Bochum	Faculty of Engineering, Graduate School of Engineering, School of Engineering
	Hungary	Szent István University	Faculty of Agricultural Economics and Social Sciences Faculty of Agricultural and Environmental Management	Graduate School of Agriculture	February 5, 2003
		Ireland	University College Dublin		Research Center for Zoonosis Control
	Dublin Institute of Technology		Faculty of Engineering, School of Engineering, Graduate School of Engineering	March 23, 2015	
	Nether lands	Leiden University	Institute of East European Law and Russian Studies	Slavic Research Center	January 17, 1994
		Vrije Universiteit	Faculty of Earth and Life Sciences	Faculty of Environmental Earth Science	December 13, 2010
	Norway	University of Tromso	Centre for Sami Studies	Center for Ainu & Indigenous Studies	August 5, 2010
		Telemark University College	Department of Environmental and Health Studies	Institute of Low Temperature Science	December 22, 2014
		University of Oslo	Department of Geosciences	Faculty of Environmental Earth Science, Graduate School of Environmental Science, Institute of Low Temperature Science	February 16, 2015
	Poland	Warsaw School of Economics		Graduate School of Economics, School of Economics	March 14, 1989
		Technical University of Lodz	Faculty of Textile Engineering	School of Science	March 19, 1992
		Polish Academy of Sciences	Institute of Mathematics	Institute for Catalysis	September 26, 2003
			Institute of Catalysis and Surface Chemistrny		March 15, 2010
		West Pomeranian University of Technology	Institute of Chemical and Environmental Engineering		March 17, 2010
		Gdansk University of Technology			March 18, 2010
		University of Gdansk			February 1, 2013
	Spain	Polytechnic University of Valencia	School of Architecture School of Civil Engineering	Graduate School of Engineering	January 9, 2006
		Sweden	University of Gothenburg	School of Business, Economics and Law	Graduate School of Economics and Business Administration, School of Economics and Business Administration
	Linköping University		Institute of Technology	Graduate School of Engineering	August 24, 2000
	Stockholm University		Faculty of Science	Institute of Low Temperature Science	September 20, 2010
	U.K.	University of Oxford, St. Antony's College	Russian and Eurasian Studies Center	Slavic Research Center	March 12, 2004
		University of Leeds	Faculty of Education, Social Science and Law	Graduate School of Education	December 11, 2006
		University of Edinburgh	Royal (Dick) School of Veterinary Studies	Graduate School of Veterinary Medicine	July 24, 2009
		University of Manchester	Faculty of Humanities	Graduate School of Letters	December 9, 2009
		Cardiff University	Cardiff Catalysis Institute	Institute for Catalysis	January 26, 2010
		University of Oxford	Oxford Centre for Asian Archaeology, Art and Culture	Center for Ainu & Indigenous Studies	October 18, 2013
		University of Glasgow	College of Science and Engineering	Research Institute for Electronic Science	November 20, 2013
		University of London	School of Oriental and African Studies	Graduate School of Letters	January 26, 2015
	Kazakhstan	Kazakh National Pedagogical University	Institute of Magistracy & PhD Education	Faculty of Science	November 19, 2009

* indicates an Academic Exchange Agreement and Memorandum of Understanding on Student Exchange exist

Departmental Exchange Agreements (con't)					
Countries / Regions		Counterparts		Hokkaido University	Concluded
Europe	Russia	Moscow State Pedagogical University		School of Education	August 3, 1995
		Russian Academy of Sciences - Siberian Branch	Institute of Economics and Industrial Engineering	Graduate School of Economics and Business Administration	July 30, 1990
				United Institute of Geology, Geophysics and Mineralogy	School of Science
		Novosibirsk State University			June 18, 1993
		Kazan State Power Engineering University	Institute of Economics and Social Technologies		January 28, 2005
		Russian Academy of Sciences	Institute of Oriental Studies	Slavic-Eurasian Research Center	October 17, 2005
			Institute of Slavic Studies		June 6, 2006
		Sakhalin State Regional Museum		Hokkaido University Museum	August 1, 2000
		Russian Academy of Sciences - Siberian Branch	V.N. Sukachev Institute of Forest	Field Science Center for Northern Biosphere	March 12, 2005
		Institute for Biological Problems of Cryolithozone, Siberian Branch of Russian Academy of Sciences		Faculty of Environmental Earth Science and Research Faculty of Agriculture	December 2, 2008
		Far Eastern Geological Institute, Far Eastern Branch of Russian Academy of Sciences			November 27, 2008
		Yakutsk State University		Faculty of Environmental Earth Science	December 3, 2008
		Melnikov Permafrost Institute, Siberian Branch of Russian Academy of Sciences			February 1, 2010
		Institute of the Indigenous Peoples of the North, Siberian Branch of Russian Academy of Sciences			February 1, 2010
		State Museum of Khabarovsk, named in honor of N. I. Grodekov			April 1, 2010
		Nikolaevsk na Amure Municipal Museum			April 1, 2010
		Primorie State Museum, named in honor of V. K. Arseniev		Hokkaido University Museum	April 1, 2010
		North-East Interdisciplinary Scientific Research Institute of the Far East Branch of the Russian Academy of Sciences			August 1, 2010
		Kamchatka State Technical University			August 20, 2010
		Tyumen State Oil and Gas University		Faculty of Environmental Earth Science	November 22, 2010
		Tyumen Science Center, Siberian Branch of the Russian Academy of Sciences			
		Irkutsk State Technical University		Hokkaido University Museum	June 1, 2011
		Russian Academy of Sciences	Institute of Russian Literature	Slavic-Eurasian Research Center	April 14, 2011
		Kalmyk State University		Slavic-Eurasian Research Center	July 30, 2012
		Far Eastern Regional Hydrometeorological Research Institute		Institute of Low Temperature Science	March 27, 2013
		Institute for Biological Problems of Cryolithozone, Siberian Branch of Russian Academy of Sciences		Graduate School of Letters	November 27, 2014
	Ukraine	Bogolyubov Institute for Theoretical Physics		Faculty of Science	March 30, 2002
North America	Canada	McMaster University	Michael G. DeGroot School of Business	Graduate School of Economics and Business Administration	October 15, 2001
		Simon Fraser University		Faculty of Science	May 10, 2008
	U.S.A	University of Wisconsin	Law School	School of Law	June 1, 1999
		Oregon Health and Sciences University	Dental School	School of Dental Medicine	January 1, 1974
		University of Washington	College of Ocean and Fishery Sciences		June 24, 1988
		University of Maryland	Center of Marine Biotechnology, Maryland Biotechnology Institute	School of Fisheries Sciences	December 23, 1989
		University of Illinois at Chicago	The Graduate College	Graduate School of Environmental Earth Science	July 14, 1993
		Harvard University	Davis Center for Russian and Eurasian Studies	Slavic-Eurasian Research Center	November 4, 1992
		University of Delaware	Center for Catalytic Science and Technology	Institute for Catalysis	July 9, 2007
		University of California, Los Angeles	California NanoSystems Institute	Research Institute for Electronic Science	June 10, 2008
		Iowa State University	Institute for Physical Research and Technology	Institute for Catalysis	March 10, 2009
		University of Massachusetts Medical School	Graduate School of Biomedical Sciences	Faculty of Advanced Life Science, Graduate School of Life Science	May 10, 2011
		Perot Museum of Nature & Science		Hokkaido University Museum	August 23, 2011
		Rice University	George R. Brown School of Engineering	Faculty of Engineering, Graduate School of Engineering, School of Engineering, Graduate School of Information Science and Technology, Graduate School of Chemical Sciences and Engineering	October 19, 2011
		University of Utah	Graduate School Nano Institute of Utah	Faculty of Environmental Earth Science, Graduate School of Environmental Science	January 22, 2013
		Purdue University	College of Science	Institute for Catalysis	April 26, 2014
South America	Brazil	Federal University of Viçosa		Research Faculty of Agriculture, Graduate School of Agriculture, School of Agriculture	May 10, 2001
	Mexico	Instituto Tecnológico y de Estudios Superiores de Monterrey		Faculty of Engineering, Graduate School of Engineering	July 20, 2011
Middle East	Saudi Arabia	King Abdullah University of Science and Technology		Research Center for Zoonosis Control	December 16, 2014
	Turkey	Izmir University	Faculty of Medicine	School of Medicine	October 24, 2011
Africa	Burkinia Faso	International Institute for Water and Environmental Engineering		Graduate School of Engineering	January 26, 2010
	Egypt	Zagazig University	Faculty of Veterinary Medicine	Center for Sustainability Science	March 15, 2010
				Graduate School of Veterinary Medicine	March 6, 2012
	Ghana	Kwame Nkrumah University of Science and Technology	College of Science	Graduate School of Veterinary Medicine	July 26, 2013
	Zambia	University of Zambia	Samora Machel School of Veterinary Medicine	Graduate School of Veterinary Medicine, School of Veterinary Medicine	December 5, 1991
				Research Center for Zoonosis Control	February 6, 2011
	Zimbabwe	University of Zimbabwe	Faculty of Veterinary Science		May 29, 2013
		Ministry of Agriculture, Mechanization and Irrigation	Division of Veterinary Technical Services	Research Center for Zoonosis Control	May 29, 2013
		Division of Tsetse Control Services		May 29, 2013	

* indicates an Academic Exchange Agreement and Memorandum of Understanding on Student Exchange exist

General Japanese Course

The International Student Center (ISC) offers General Japanese classes for overseas students, teaching, and research staff as outlined below:

Levels	Subjects			
Introductory	Grammar	Oral Skills	Vocabulary / Kanji	
Intermediate	Interaction (Basic Japanese)	Expression (Basic Japanese)	Comprehension (Basic Japanese)	
	Interaction (Practical Japanese)	Expression (Practical Japanese)	Comprehension (Practical Japanese)	
Advanced	Grammar	Oral Skills	Vocabulary / Kanji	Listening Comprehension
	Written Expression	Reading Comprehension	Business Japanese	

Levels and subjects:

Students are free to choose from the following according to their needs; however, class level will be determined on the basis of a placement test and on the previous study of Japanese.

Eligibility:

The course is open to overseas students enrolled at Hokkaido University with a student visa (research students / kenkyusei, graduate students, special auditors, and special research students) and overseas teaching and research staff. Auditors, credited auditors, and bachelor's degree program students are not eligible to apply. Bachelor's degree program students are only eligible to take the Business Japanese class.

Applications and Placement Test Information:

All applicants must complete an online application through the website (<https://jpnccourse.oia.hokudai.ac.jp/entry/>). For more information including placement test information, please visit the following links: <http://www.oia.hokudai.ac.jp/current-students/japanese-language-support/> , <http://www.hokudai.ac.jp/php/jc/faq/> .

Intensive Japanese Course

*for Monbukagakusho Scholarship students, and self-financed / self-supported students

This course aims at helping Monbukagakusho Scholarship students at the graduate level and in teacher training programs develop understanding and proficiency in the Japanese language before they enroll in graduate programs.

Classes offered:

Elementary Grammar, Elementary Conversation, Elementary Kanji, Elementary Reading Comprehension, Elementary Writing, and Elementary Listening Comprehension and Pronunciation

Length of course: 16 weeks. From Monday to Friday, 3 lessons per day. 1 lesson is 90 minutes.

Eligibility:

This course is mainly for research students on Monbukagakusho scholarships recommended by Japanese Embassy; however, privately-financed research students may also be admitted if there are vacancies.

Co-learning in Multicultural Classrooms (CMC)

The International Student Center (ISC) coordinates and mainly offers Co-learning in Multicultural Classrooms (CMC) for overseas students, teaching, and research staff as outlined below:

Objective:

The CMC centers on exchanges between Japanese students and international students via course topics in order to increase vocabulary and understanding while heightening skills that are necessary in the University environment. As such, the course does not emphasize learning the Japanese language so much as concentrate on learning from one another. To this end, active and independent involvement is expected.

Eligibility:

Prospective students must fulfill the following two requirements:

- 1) The course is open to overseas students enrolled at Hokkaido University with a student visa (research students / kenkyusei, graduate students, special auditors, and special research students) and overseas teaching and research staff. For more information, please visit the following link: (<http://www.oia.hokudai.ac.jp/current-students/japanese-language-support/>)
- 2) Japanese language ability must be at advanced or above.

Application and Placement Test Information:

All applicants must complete an online application through the website: <https://jpnccourse.oia.hokudai.ac.jp/entry/> .

After applying, new students have to take a placement test. For more information, please visit the following links: <http://www.oia.hokudai.ac.jp/current-students/japanese-language-support/> , <http://www.hokudai.ac.jp/php/jc/faq/> .

General Education: Japanese Language and Affairs

*for Monbukagakusho Scholarship students

This credited class is offered to international students enrolled in a HU faculty that endeavor to raise their Japanese language ability beyond the University's Japanese language requirement.

Medical Clinical Department

Clinical Sections	Number of Beds	Number of Patients (2014 Fiscal Year)	
		Out-patients	In-patients
Internal Medicine I	44	23,213	16,312
Internal Medicine II	47	46,016	14,485
Gastroenterology and Hepatology	44	43,520	15,888
Cardiovascular Medicine	32	14,027	10,014
Hematology	36	11,823	11,153
Medical Oncology	5	2,964	4,965
Gastroenterological Surgery I	40	9,646	17,466
Gastroenterological Surgery II	22	3,413	10,012
Cardiovascular and Thoracic Surgery	24	5,562	9,872
Orthopaedic Surgery	48	27,322	19,547
Urology	32	21,095	12,724
Anesthesiology	2	9,896	120
Plastic Surgery	25	7,577	8,188
Sports Medicine	6	2,664	1,589
Breast Surgery	6	8,024	2,215
Emergency Service	6	1,734	4,315
Neurological Medicine	16	15,222	7,645
Ophthalmology	32	38,216	12,155
Otolaryngology	32	17,768	12,349
Dermatology	22	15,880	7,667
Psychiatry and Neurology	72	47,775	20,856
Neurosurgery	32	9,032	13,234
Rehabilitation and Physical Medicine	20	45,386	3,987
Obstetrics	38	10,762	16,237
Gynecology	30	23,652	11,227
Pediatrics	40	18,139	13,506
Radiation Oncology	17	18,929	5,951
Diagnostic and Interventional Radiology	1	46,933	286
Nuclear Medicine	6	6,996	3,709
Intensive Care Unit (ICU)	10	-	(3,399)
Neonatal Intensive Care Unit (NICU)	9	-	(2,988)
Growing Care Unit (GCU)	(11)	-	(2,720)
Maternal Fetal Intensive Care Unit (MFICU)	(3)	-	(1,087)
Highly Qualified Clean Ward	5	-	(1,069)
Common beds	109	-	(8,347)
TOTAL	910	553,186	287,674

*Number of beds of pediatrics (40 beds) includes a highly qualified clean room.

The numbers in the parentheses in the above table are included in the number of each clinical section.

Dental Clinical Department

Clinical Sections	Number of Beds	Number of Patients (2014 Fiscal Year)	
		Out-patients	In-patients
Preventive Dentistry	26	6,206	7,624
Endodontics and Periodontics		33,742	
Crown and Bridge Prosthodontics		12,559	
Gerodontology		15,648	
Dentistry for Children and Disabled Persons		9,573	
Orthodontic		12,990	
Restorative Dentistry		18,184	
Removable Prosthodontists		19,088	
Oral Medicine		17,636	
Oral and Maxillofacial Surgery		19,321	
Dental Radiology		3,585	
Dental Anesthesiology		2,243	
Center for Advanced Oral Medicine		7,537	
Division for General Dentistry		2,766	
TOTAL	26	181,078	7,624

Clinical Sections	Number of Beds	Number of Patients (2014 Fiscal Year)	
		Out-patients	In-patients
GRAND TOTAL	936	734,264	295,298

*The number of the designated beds is 946.

Collections

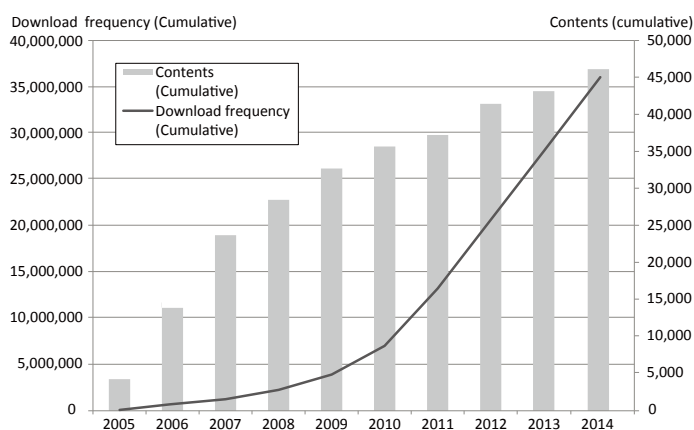
	Japanese Books	Foreign Books	TOTAL	Journals
Central Library	1,014,737	833,858	1,848,595	32,669
North Library	254,326	116,273	370,599	1,730
SUBTOTAL	1,269,063	950,131	2,219,194	34,399

Collections by Department

Creative Research Institution	4	3	7	7
Center for Research and Development in Higher Education	3,901	994	4,895	178
Letters	147,559	121,724	269,283	4,971
Law	7,817	1,968	9,785	1,143
Economics and Business Education	9,629	4,620	14,249	1,113
Medicine	56,559	97,151	153,710	5,904 *
Dental Medicine	24,266	20,552	44,818	1,190
Veterinary Medicine	11,120	26,172	37,292	1,422
Information Science and Technology	14,471	18,115	32,586	855 **
Fisheries Sciences	77,289	55,173	132,462	5,127
Environmental Science / Environmental Earth Science	10,283	9,279	19,562	619
Science	42,679	176,370	219,049	4,192
Pharmaceutical Sciences and Pharmacy	7,062	3,731	10,793	293
Agriculture	147,363	110,815	258,178	8,428
Life Science / Advanced Life Science	93	97	190	24
Education	17,805	4,484	22,289	992
International Media, Communication, and Tourism Studies / Media and Communication	5,761	9,470	15,231	349
Health Sciences	31,245	4,061	35,306	909
Engineering	115,753	113,266	229,019	5,596
Public Policy	1	0	1	1
Institute of Low Temperature Science	11,423	25,069	36,492	1,728
Research Institute for Electronic Science	1,252	959	2,211	29
Institute for Genetic Medicine	500	294	794	26
Institute for Catalysis	4,414	16,569	20,983	458
Slavic-Eurasian Research Center	2,421	66,167	68,588	1,841
Information Initiative Center	0	0	0	57
Hokkaido University Museum	9,141	3,454	12,595	1,117
Field Science Center for Northern Biosphere	5,861	1,747	7,608	106
Hokkaido University Archives	1,684	2	1,686	0
Center for Ainu and Indigenous Studies	3,009	460	3,469	120
Office of International Affairs	0	0	0	1
GRAND TOTAL	2,039,428	1,842,897	3,882,325	83,195

* Includes the hospital and Central Institute of Isotope Science ** Includes the Research Center for Integrated Quantum Electronics

Data as of March 31, 2015

HUSCAP(Hokkaido University Collection of Scholarly and Academic Papers)
Contents(cumulative)

Number of visitors in 2014:123,979

Collections / Documents

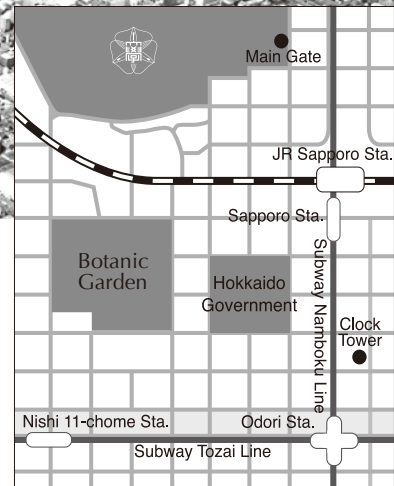
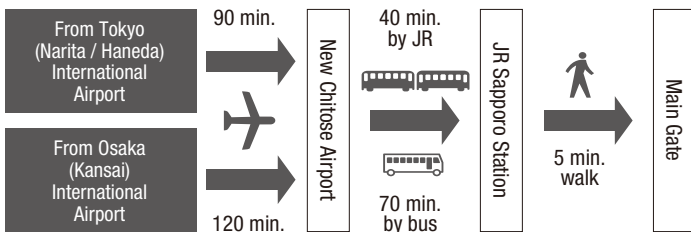
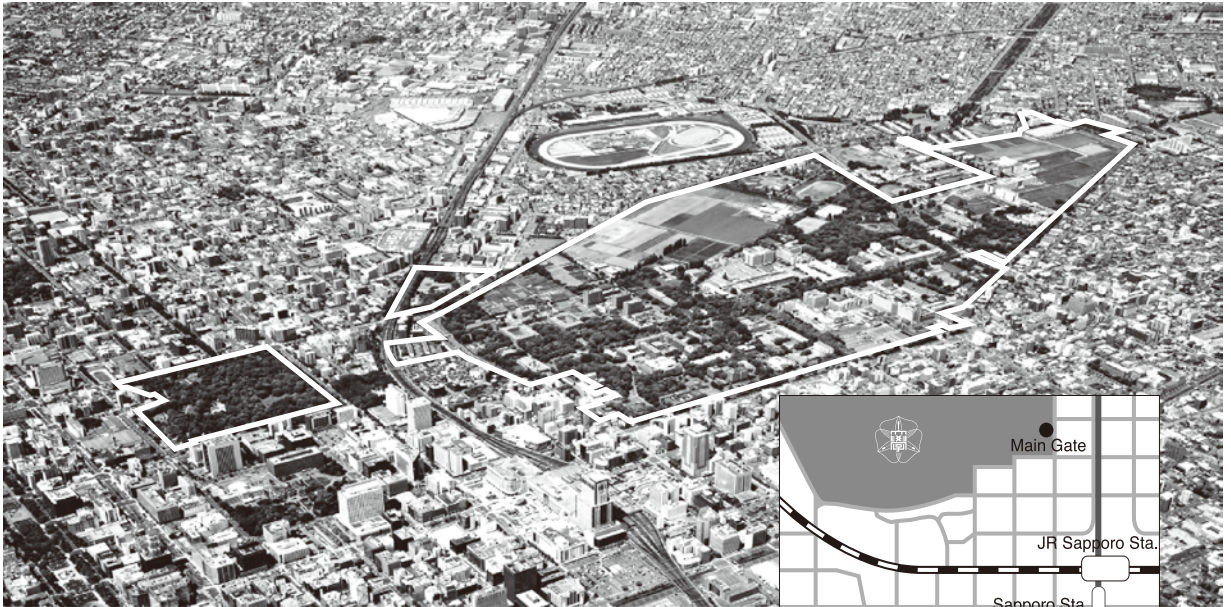
The Hokkaido University has over 4 million specimens, most of which are housed at the Hokkaido University Museum. Among our collection, more than 13,000 are type specimens, and over 10,000 of these are displayed in museum exhibits.

Category (international abbreviation)	Number of Specimens (unsorted specimens)
Land Plants (SAPS)	400,000 (150,000)
Fungi (SAPA)	170,000
Marine Algae (SAP)	140,000
Insects (SEHU)	2,000,000
Fish (HUMZ)	190,000
Invertebrates (ZIHU)	2,425
Extinct Plants and Animals	20,000
Rocks and Minenals	71,350 (50,000)
Archaeology	30,000
TOTAL	3,023,775

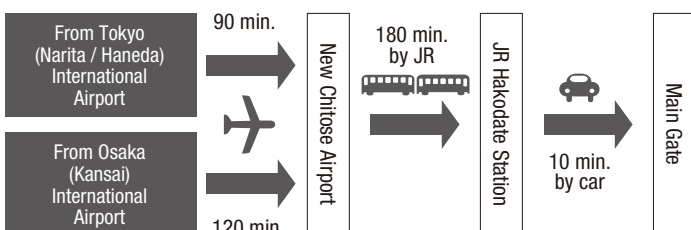
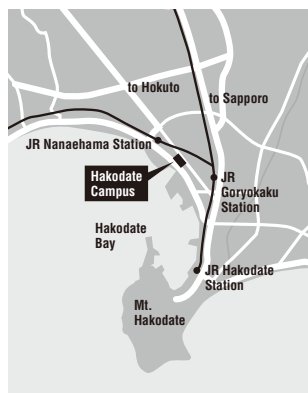
Type Specimens

Category (international abbreviation)	Number of Specimens
Insects	10,000
Plants	323
Invertebrates	700
Geology (fossils ・ minerals)	10
Fish	800
Marine Algae	350
Extinct Plants and Animals	700
TOTAL	12,883

Sapporo Campus



Hakodate Campus



Administration and Planning

Administration Bureau

General Affairs and Planning Dept., Finance Dept.,
Research Promotion Dept., Facilities Dept.
Kita 8, Nishi 5, Kita-ku, Sapporo 060-0808

Academic Affairs Dept.

Student Support Division, Entrance Exam Division,
Admission Center

Kita 17, Nishi 8, Kita-ku, Sapporo 060-0817
Tel: +81-(0)11-706-7484 Fax: +81-(0)11-706-7488
E-mail: ac-info@academic.hokudai.ac.jp
http://www.hokudai.ac.jp/bureau/nyu/index.html

Front Office for Human Resource Education and Development

Kita 8, Nishi 5, Kita-ku, Sapporo 060-0808

Career Center

Kita 8, Nishi 8, Kita-ku, Sapporo 060-0808
Office Hours: 8:30 - 18:00
(Except on Saturdays, Sundays, and national holidays)
Tel: +81-(0)11-706-3271
E-mail: ccadv@academic.hokudai.ac.jp

Institute for the Promotion of Business-Regional Collaboration

Kita 21, Nishi 11, Kita-ku, Sapporo 001-0021

Creative Research Institution (CRIS)

Kita 21, Nishi 10, Kita-ku, Sapporo 001-0021

Division of Fund-Raising Strategy, Research Promotion Dept.

Kita 21, Nishi 10, Kita-ku, Sapporo 001-0021

Office of International Affairs & International Student Center

Kita 15, Nishi 8, Kita-ku, Sapporo 060-0815

Division of International Relations

Tel: +81-(0)11-706-8023 Fax: +81-(0)11-706-8036
E-mail: general@oia.hokudai.ac.jp

Division of International Academic Programs

Tel: +81-(0)11-706-8053 Fax: +81-(0)11-706-8067
E-mail: ryugaku@oia.hokudai.ac.jp

Division of International Exchange

Tel: +81-(0)11-706-8035 Fax: +81-(0)11-706-8037
E-mail: dis@oia.hokudai.ac.jp

Institute for the Advancement of Higher Education

Kita 17, Nishi 8, Kita-ku, Sapporo 060-0817

Office of Health and Safety

Kita 8, Nishi 5, Kita-ku, Sapporo 060-0808

Office of Internal Auditors

Kita 8, Nishi 5, Kita-ku, Sapporo 060-0808

Office for a Sustainable Campus

Kita 8, Nishi 5, Kita-ku, Sapporo 060-0808
Tel: +81-(0)11-706-4530

Experimental Station for Medicinal Plant Studies

Kita 3, Nishi 8, Chuo-ku, Sapporo 060-0003
Tel: +81-(0)11-221-0066

Front Office for Human Resource Education and Development

S-cubic

Tel: +81-(0)11-706-3275
Fax: +81-(0)11-706-3584
E-mail: s-cubic@synfoster.hokudai.ac.jp

I-HoP

Tel: +81-(0)11-706-2157
E-mail: ihop@synfoster.hokudai.ac.jp

Tenure-Track

Tel: +81-(0)11-706-9181
E-mail: lstation@cris.hokudai.ac.jp

FResHU

Tel: +81-(0)11-706-3625
Fax: +81-(0)11-706-3692
E-mail: freshu@synfoster.hokudai.ac.jp

COFRE

Tel: +81-(0)11-706-2271
Fax: +81-(0)11-706-3584
E-mail: cofre@synfoster.hokudai.ac.jp

Tokyo Office

Sapia Tower 10 F,
Marunouchi 1 chome 7-12,
Chiyoda-ku, Tokyo 100-0005
Tel & Fax: +81-(0)3-3211-2055
E-mail: tokyo@general.hokudai.ac.jp
Office Hours: Weekdays 10:00-18:00
(Closed on Saturdays, Sundays, and Dec. 29 - Jan.3)

Osaka Alumni House

Osaka Station Dai 2 Bldg. 2nd F,
Umeda 1 chome 2-2-200, Kita-ku, Osaka 530-0001
Tel & Fax: +81-(0)6-6343-3736
(Closed on Aug. 13-16, and Dec. 29 - Jan.3)

Graduate Schools, Faculties and Schools

Graduate School / Faculty of Letters

Kita 10, Nishi 7, Kita-ku, Sapporo 060-0810

Graduate School / Faculty of Law

Kita 9, Nishi 7, Kita-ku, Sapporo 060-0809

Graduate School /

School of Economics and Business Administration

Kita 9, Nishi 7, Kita-ku, Sapporo 060-0809

Faculty / Graduate School / School of Education

Kita 11, Nishi 7, Kita-ku, Sapporo 060-0811

Graduate School of International Media, Communication, and Tourism Studies / Research Faculty of Media and Comm.

Kita 17, Nishi 8, Kita-ku, Sapporo 060-0817

Graduate School / Faculty of Public Policy

Kita 9, Nishi 7, Kita-ku, Sapporo 060-0809

Graduate School / School of Medicine

Kita 15, Nishi 7, Kita-ku, Sapporo 060-8638

Graduate School / School of Dental Medicine

Kita 13, Nishi 7, Kita-ku, Sapporo 060-8586

Graduate School / School of Veterinary Medicine

Kita 18, Nishi 9, Kita-ku, Sapporo 060-0818

Hokkaido University Veterinary Teaching Hospital
Kita 19, Nishi 10, Kita-ku, Sapporo 060-0819

**Faculty of Pharmaceutical Sciences /
School of Pharmaceutical Sciences and Pharmacy**
Kita 12, Nishi 6, Kita-ku, Sapporo 060-0812

Graduate School / Faculty of Health Sciences
Kita 12, Nishi 5, Kita-ku, Sapporo 060-0812

Graduate School of Information Science and Technology
Kita 14, Nishi 9, Kita-ku, Sapporo 060-0814

Graduate School / School of Fisheries Sciences
3-1-1 Minato-cho, Hakodate 041-8611

**Graduate School of Environmental Science /
Faculty of Environmental Earth Science**
Kita 10, Nishi 5, Kita-ku, Sapporo 060-0810

Graduate School / Faculty / School of Science
Kita 10, Nishi 8, Kita-ku, Sapporo 060-0810

**Graduate School / Research Faculty /
School of Agriculture**
Kita 9, Nishi 9, Kita-ku, Sapporo 060-8589

Graduate School of Life Science
Kita 10, Nishi 8, Kita-ku, Sapporo 060-0810

School of Advanced Life Science
Kita 10, Nishi 8, Kita-ku, Sapporo 060-0810

Graduate School / Faculty / School of Engineering
Kita 13, Nishi 8, Kita-ku, Sapporo 060-8628

Graduate School of Chemical Sciences and Engineering
Kita 13, Nishi 8, Kita-ku, Sapporo 060-8628

Research Institutes and Centers

Institute of Low Temperature Science
Kita 19, Nishi 8, Kita-ku, Sapporo 060-0819

Research Institute for Electronic Science
Kita 20, Nishi 10, Kita-ku, Sapporo 001-0020

Institute for Genetic Medicine
Kita 15, Nishi 7, Kita-ku, Sapporo 060-0815

Institute for Catalysis
Kita 21, Nishi 10, Kita-ku, Sapporo 001-0021

Slavic-Eurasian Research Center
Kita 9, Nishi 7, Kita-ku, Sapporo 060-0809

Information Initiative Center (North and South Bldgs.)
Kita 11, Nishi 5, Kita-ku, Sapporo 060-0811

Research Center for Zoonosis Control
Kita 20, Nishi 10, Kita-ku, Sapporo 001-0020

Central Institute of Isotope Science
Kita 15, Nishi 7, Kita-ku, Sapporo 060-0815

Research Center for Integrated Quantum Electronics
Kita 13, Nishi 8, Kita-ku, Sapporo 060-8628

Field Science Center for Northern Biosphere
Kita 11, Nishi 10, Kita-ku, Sapporo 060-0811

Center for Advanced Tourism Studies
Kita 17, Nishi 8, Kita-ku, Sapporo 060-0817

Center for Ainu and Indigenous Studies
Kita 8, Nishi 6, Kita-ku, Sapporo 060-0808

Center for Experimental Research in Social Sciences
Kita 10, Nishi 7, Kita-ku, Sapporo 060-0810

Center for Environmental and Health Sciences
Kita 12, Nishi 7, Kita-ku, Sapporo 060-0812

Arctic Research Center
Kita 21, Nishi 11, Kita-ku, Sapporo 001-0021

Research and Education Center for Brain Science
Kita 15, Nishi 7, Kita-ku, Sapporo 060-0815

Center for Language Learning
Kita 17, Nishi 8, Kita-ku, Sapporo 060-0817

Center for Sustainability Science (CENSUS)
Kita 9, Nishi 8, Kita-ku, Sapporo 060-0809

Hokkaido University Museum (Closed until July 2016)
Kita 10, Nishi 8, Kita-ku, Sapporo 060-0810

Hokkaido University Archives
Kita 8, Nishi 5, Kita-ku, Sapporo 060-0808

Health Care Center
Kita 16, Nishi 7, Kita-ku, Sapporo 060-0816

Archaeological Research Center
Kita 11, Nishi 7, Kita-ku, Sapporo 060-0811

**Global Institution for Collaborative Research and
Education (GI-CoRE)**
Kita 15, Nishi 8, Kita-ku, Sapporo 060-0815

**Global Station for Quantum Medical Science and
Engineering**
Kita 15, Nishi 7, Kita-ku, Sapporo 060-8648

Global Station for Zoonosis Control
Kita 20, Nishi 10, Kita-ku, Sapporo 001-0020

Global Station for Food, Land and Water Resources
Kita 9, Nishi 10, Kita-ku, Sapporo 060-8589

Frontier Research in Applied Sciences Bldg.
Kita 13, Nishi 8, Kita-ku, Sapporo 060-8628

