

Peer Review & Web of Science

Monday, February 5, 13:00 - 17:30

Mid-Campus Open Laboratory Bldg #1

(Southeast corner of Main Street & Ginkgo Avenue)

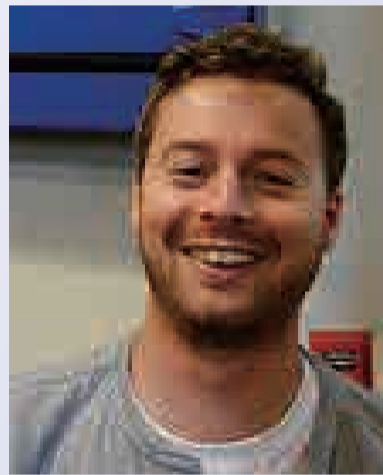
13:00 Peer Review

Publons

General overview about scholarly publishing and peer review

In depth with each section of a paper

Discussion and Q&A



He is the co-founder and Managing Director of Publons. Prior to that he was an active researcher in condensed matter physics, first as a PhD student at Victoria University of Wellington, then as postdoctoral researcher at Boston University. He founded Publons with a mission to speed up research by improving peer review. Publons recognises reviewers for their work and - with more than 250,000 researchers and over 1,600 partner journals - is the world's largest peer review platform. Publons was acquired by Clarivate Analytics, the home of the Web of Science, in June 2017.

Dr. Andrew Preston

publons



16:00 Web of Science

Clarivate Analytics

Overview of Web of Science

How to use Web of Science to show your performance

How to use Web of Science to find important/related literatures



He has received his MS in Mechanical Engineering from Stanford University. After working at think tank firm in Japan as analyst in the energy sector, he joined Clarivate Analytics, Thomson Reuters at that time, as consultant in 2011 and has provided bibliometrics base research analytics to universities and research institutes. Since 2016, he is responsible for the all Web of Science related products in Japan.

Dr. Masafumi Nakamura

Clarivate Analytics

*This seminar will be conducted in English

*Please register via Hi-System

*Open to graduate student, postdoc & faculty

*Limited seats, first come first served basis

Hokkaido University Front Office for Human Resource Education and Development

Consortium Office for Fostering of Researchers in Future Generations (COFRE) 011-706-2271 / cofre@synfoster.hokudai.ac.jp

Hokudai International Human Resource Development Program (I-Hop)

Office for Developing Future Research Leaders (L-Station)

