

# HOKKAIDO UNIVERSITY

*at a glance*



# *“be ambitious”*

Founded in 1876 as Sapporo Agricultural College, Hokkaido University is one of the oldest, largest and most prestigious universities in Japan. The university also has one of Japan's most beautiful campuses. Green spaces, forests, and creeks are spread throughout its campuses located in the cities of Sapporo and Hakodate, which experience distinct seasonal changes throughout the year. The university offers diverse degree programs for international students and places great emphasis on research in the sciences and humanities. It also houses cutting-edge research facilities, a university hospital, and a wide variety of field research centers.

Dr. William S. Clark, 1<sup>st</sup> vice president  
of Sapporo Agricultural College, taken  
at Hitsujigaoka Observation Hill

DISCOVER  
OUR HISTORY





# Our vision

Contributing towards

innovative

international

# the resolution

collaboration

sustainability

# of global issues

world leaders next-generation

cutting-edge

For our  
significant contributions  
to sustainability, we ranked  
**1<sup>st</sup> in Japan** and  
**10<sup>th</sup> in the world**



educating

## research excellence

Frontier Spirit

Global Perspectives

OUR  
PHILOSOPHIES

Practical Learning

All-Round Education

HOW WE AIM  
FOR EXCELLENCE





# Campuses

We have **2** campuses  
& **21** facilities  
located on the island  
of **Hokkaido**  
and throughout  
Japan.



Daytime view of Sapporo

## Sapporo Campus

Located in the center of Sapporo, the 5<sup>th</sup> largest city in Japan, this extensive campus is often hailed as one of the most beautiful campuses in the country.

Housing most the university's buildings and laboratories, a museum, and a hospital, it is open to the public and is particularly busy during the Hokkaido University Festival in summer and Golden Leaf Festival in autumn.



## Hakodate Campus

Opened in 1935, this campus is one of the largest in Japan dedicated to fisheries research.



CAMPUS MAPS



# Research

We produce **world-class**

experts at the forefront of developing

a **global** and **sustainable**

society. We work **together** with

businesses and government agencies to

develop **innovative** solutions

to modern-day problems.



Akira Suzuki, Nobel Prize in Chemistry (2010)



Benjamin List, Nobel Prize in Chemistry (2021)



LEARN MORE  
ABOUT OUR INITIATIVES

# Facilities

**2** training  
ships

**7** aquatic  
research  
stations

**660km<sup>2</sup>**  
of campus & facilities

**7** forest  
research  
stations



LEARN  
MORE





# International

**732**

partners  
institutions

open to  
students from  
our partner  
universities

from  
**71**  
countries

## Exchange programs

- ◆ Study for 1 year or ½ year
- ◆ Courses in either English (HUSTEP) or Japanese (JLCSP)
- ◆ Scholarships are available

LEARN MORE



open to  
all students

## Hokkaido Summer Institute (HSI)

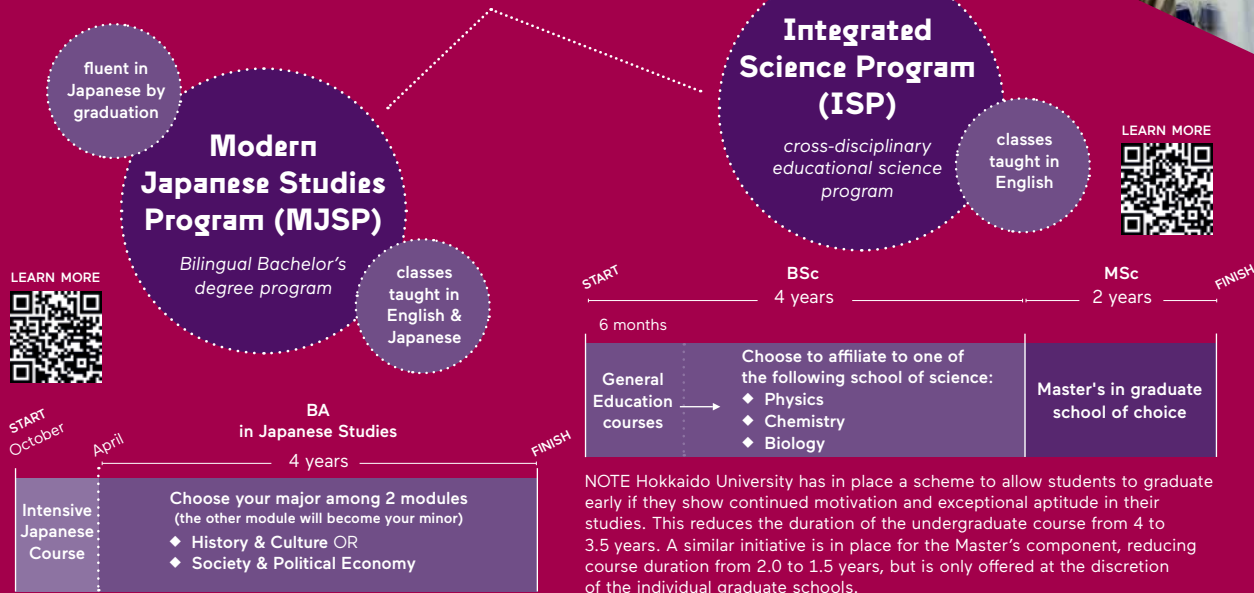
- ◆ Flexible summer schedule
- ◆ Around 350 courses in English (online/offline)
- ◆ Multiple disciplines covered
- ◆ Taught by experts from around the world
- ◆ Courses for working adults offered

LEARN MORE



# Study in English

## Undergraduate



## Graduate

- ♦ Engineering <sup>MSc / PhD</sup>
- ♦ Veterinary Science <sup>PhD</sup>
- ♦ Environmental Science <sup>MSc / PhD</sup>
- ♦ Science (Mathematics, Condensed Matter Physics, Cosmo sciences, Natural History Sciences) <sup>MSc / PhD</sup>
- ♦ Chemical Sciences and Engineering <sup>PhD</sup>
- ♦ Life Science <sup>MSc / PhD</sup>
- ♦ Agriculture <sup>MSc / PhD</sup>



SCAN HERE TO LEARN  
OTHER WAYS TO STUDY AT  
HOKKAIDO UNIVERSITY





# Fees / Scholarships

## Scholarship

- ◆ **Japanese government** (MEXT)
- ◆ **Hokkaido University**
  - President's Fellowship
  - Special Grant Program for self-supported International Students
  - Frontier Fund Clark Scholarship
- ◆ **Private**
- ◆ **Others**
  - JICA
  - JASSO

FOR MORE DETAILS  
ON SCHOLARSHIPS



## Expenses

### undergraduate

¥834,800 / year  
(tuition +entrance  
& examination fees)

### postgraduate

¥847,800 / year  
(tuition +entrance  
& examination fees)

### COST OF STUDYING

### research

¥29,700 / month  
+  
¥94,400  
(entrance &  
examination fees)

### audit

¥14,800 / credit  
+  
¥38,000  
(entrance &  
examination fees)

+

### COST OF LIVING

¥80,000-115,000  
/month

FOR MORE DETAILS  
ON TUITION FEES



**18,094**  
students

**2,074**  
international students

from  
**99**  
countries

## RANKINGS

**1<sup>st</sup>**  
in Japan

THE World University Impact Rankings 2022

**120+**  
student clubs

**3,917**  
faculty & staff

**7<sup>th</sup>**  
in Japan

Nature Top Academic Institutions 2021

**In Numbers**  
as of May 2022

**237,532**  
alumni

**5**  
overseas offices

**29<sup>th</sup>**  
in Asia

QS Asia University Rankings 2023





## CONTACT US

Hokkaido University  
Kita 8, Nishi 5, Kita-ku  
Sapporo, Hokkaido  
060-0808 Japan  
pr@oia.hokudai.ac.jp

[www.global.hokudai.ac.jp](http://www.global.hokudai.ac.jp)

Follow Us @HokkaidoUni

