



HOKKAIDO UNIVERSITY

2016-2017 Data Book

1. History	1
2. Organizational Structure	5
1) General Organization	5
2) Governing Organization	6
3) Administrative Organization	6
3. Number of Staff	7
4. Number of Students / Degrees Granted	9
1) Undergraduate Courses	9
2) Graduate Courses	9
3) Institute and Centers	9
4) Degree Granted	9
5. Number of International Students	10
1) Distribution by Country / Region	10
2) Distribution within Hokkaido University	11
6. International Academic Exchange	12
1) Inter-University Exchange Agreements	12
2) Memoranda Based on Inter-University Agreements and Departmental Exchange Agreements	15
3) International Consortia	24
7. Research Grants, Joint Research, etc.	24
8. Hokkaido University Museum at a Glance	24
1) Number of Objects and Specimens	24
2) Specimen Types	24
9. Hokkaido University Hospital at a Glance	25
1) Medical Clinical Department	25
2) Dental Clinical Department	25
10. Hokkaido University Library at a Glance	26
1) Collections in Library	26
2) Collections by Department	26
3) Library Use Information	26



1. History

Sapporo Agricultural College (1876–1907)		
1876	7	Dr. William S. CLARK, then president of the Massachusetts Agricultural College in the United States invited to be vice president of Sapporo Agricultural College. He arrives in Sapporo with two American professors, W. WHEELER and D. PENHALLOW, and eleven American students.
	8.14	Sapporo Agricultural College inaugurated. (Hokkaido University celebrates its anniversary of foundation on August 14.)
	9	Hirotake CHOSHŌ named president of Sapporo Agricultural College.
	12	Book-Stack Room (later College Library) opens.
1878	10	The martial arts training facility (current Sapporo Clock Tower) constructed.
1881	2	Genzo MORI, then Hokkaido development commissioner, acts also as college president.
1886	7	Botanical Garden constructed.
	12	Hideaki SATO named administrative officer of Hokkaido prefectural government and acting college president.
1887	3	Shosuke SATO named acting president.
1888	12	Bunzo HASHIGUCHI named president.
1891	8	Shosuke SATO named assistant president.
1894	4	Shosuke SATO named president.
Tohoku Imperial University (1907–1918)		
1907	9	Sapporo Agricultural College becomes the Agricultural College of Tohoku Imperial University and adds preparatory courses. (It is inaugurated in September 1907.)
		Book-Stack Room renamed College Library.
		Shosuke SATO named dean of the Agricultural College of Tohoku Imperial University.
1909	2	Oshoro-maru built as a new training ship.
Hokkaido Imperial University (1918–1947)		
1918	4	Agricultural College of Tohoku Imperial University transferred to the newly established Hokkaido Imperial University, becoming the Agricultural College of Hokkaido Imperial University.
		Shosuke SATO named president of Hokkaido Imperial University and dean of its Agricultural College.
1919	2	Agricultural College of Hokkaido Imperial University renamed the School of Agriculture in Hokkaido Imperial University.
		The School of Medicine established.
	4	Shosuke SATO named president of Hokkaido Imperial University.
1921	4	The Medical Clinic attached to the School of Medicine established (becomes operational in November 1921).
1922	5	College Library renamed Hokkaido University Library.
1924	9	The School of Engineering established.
1930	4	The School of Science established.
	12	Takajiro MINAMI named president.
1933	12	Kumao TAKAOKA named president.
1937	12	Yutaka KON named president.
1941	11	The Institute of Low Temperature Science established.
1943	2	The Institute of Catalysis Research established.
		The Institute of VHF Research established.
1945	7	The Administrative Office and the Student Affairs Office established.
	11	Seiya ITO named president.
1946	3	The Institute of VHF Research renamed the Institute of Applied Electronics Research.

1947	4	The School of Law and Letters established.
Hokkaido University (1947–2004)		
1947	10	Hokkaido Imperial University renamed Hokkaido University.
1949	5	Under the National School Establishment Law, Hokkaido University reorganized into the new Hokkaido University with schools of law and letters, education, science, medicine, engineering, agriculture, and fisheries sciences (Hakodate).
		The Medical Clinic attached to the School of Medicine renamed the Hospital attached to the School of Medicine.
		Seiya ITO named president.
		The new training ship Hokusei-maru becomes operational.
	6	The Department of Liberal Studies established (renamed the School of Liberal Studies in April 1951).
1950	3	Preparatory courses abolished.
	4	The Institute of Tuberculosis Research established.
		The School of Law and Letters divided into the School of Letters and the School of Law and Economics.
	10	Yoshichika SHIMA named president.
1952	4	The School of Veterinary Medicine established.
1953	4	New Graduate Schools of Letters, Education, Law, Economics and Business Administration, Science, Engineering, Agriculture, Veterinary Medicine, and Fisheries Sciences established.
	8	The School of Law and Economics divided into the School of Law and the School of Economics and Business Administration.
1954	10	Harusada SUGINOME named president.
1955	4	The Graduate School of Medicine established.
1957	7	The School of Liberal Studies renamed the School of Liberal Arts.
1958	4	The Graduate School of Pharmaceutical Sciences established.
1961	5	The Training Center for Engineering Teachers established (abolished in March 1969).
1965	4	The School of Pharmaceutical Sciences and Pharmacy established.
1966	10	Jiro FURUICHI named president.
1967	2	Atae ABE named acting president upon the death of Jiro FURUICHI.
	5	Juro HORIUCHI named president.
	6	The School of Dental Medicine established.
	8	The Dental Hospital Attached to the School of Dental Medicine becomes operational.
1969	4	General Education branch established at the Hokkaido University Library.
1970	4	The Computer Center (joint-use facility) established.
1971	3	The new Study investigation ship Ushio-maru becomes operational.
	5	Kichizo NIWA named president.
1972	5	The Health Management Center established.
		The Physical Education Center established.
1974	4	The Graduate School of Dental Medicine established.
	6	The Institute of Tuberculosis Research reorganized into the Institute of Immunological Research.
1975	5	Shigekazu IMAMURA named president.
1977	4	The Graduate School of Environmental Science (stand-alone graduate school) established.
1978	4	The Slavic Research Center established.
		The Central Institute of Isotope Science established.
1979	4	The Information Processing Education Center established.

		The Instrumental Analysis Center established.
1980	10	The College of Medical Technology established.
1981	4	The Institute of Language and Cultural Studies established. The Center for Experimental Plants and Animals established.
	5	Mikio ARIE named president.
1985	4	The Research Center for Molecular Genetics established.
1987	5	Yoshio BAN named president.
1989	5	The Institute of Catalysis Research evolves into the Catalysis Research Center (joint-use research facility).
1990	6	The Slavic Research Center designated as a joint-use research facility.
1991	4	The International Student Center established. The Research Center for Quantum Interface Electronics established.
	5	Tsutomu HIROSHIGE named president.
1992	4	The Institute of Applied Electronics Research reorganized into the Research Institute for Electronic Science.
1993	4	The Graduate School of Environmental Science evolves into the Graduate School of Environmental Earth Science (stand-alone graduate school).
1994	6	The Center for Advanced Research of Energy established.
1995	4	The School of Liberal Arts abolished. The Center for Research and Development in Higher Education established. The Institute of Low Temperature Science designated as a joint-use research facility. The Graduate School of Science and the Graduate School of Veterinary Medicine each evolves into a Graduate Research School, which places greater emphasis on graduate education and research. The Environmental Preservation Center established. General Education branch of the Hokkaido University Library renamed, North Branch.
	5	Norihito TANBO named president.
1996	5	The Center for Advanced Science and Technology established.
	8	The Venture Business Laboratory established.
1997	4	The Graduate School of Engineering evolves into a Graduate Research School.
1998	4	The Graduate School of Pharmaceutical Sciences evolves into a Graduate Research School.
1999	4	The Graduate School of Agriculture evolves into a Graduate Research School. The Information Processing Education Center evolves into the Education and Research Center for Information and Media Studies. The Hokkaido University Museum established.
2000	4	Graduate Schools of Letters, Education, Law, Economics and Business Administration, Medicine, Dental Medicine, and Fisheries Sciences each evolves into a Graduate Research School. The Graduate School of International Media and Communication Studies (stand-alone graduate school) established. The Institute of Immunological Research reorganized into the Institute for Genetic Medicine (the Research Laboratory Attached to the School of Medicine abolished). The Center for Northern Eurasian and Northern Pacific Studies established.

2001	4	The Field Science Center for Northern Biosphere assumes the management of the following facilities: the Marine Biological Station and the Institute of Algological Research, formerly attached to the School of Science; botanical gardens, farms, forests, and ranches formerly attached to the School of Agriculture; Lake Toya Inland Water Station, Usujiri Fisheries Station, and Nanae Fresh Water Laboratory, formerly attached to the School of Fisheries Sciences. The expanded Center for Advanced Science and Technology assumes the management of the Chromosome Research Unit, which was formerly attached to the School of Science, the Center for Experimental Plants and Animals, and the Research Center for Molecular Genetics. The Research Center for Quantum Interface Electronics evolves into the Research Center for Integrated Quantum Electronics.
	5	Mutsuo NAKAMURA named president.
2002	2	The Creative Scientific Research Institution established.
	3	The old training ship Hokusei-maru decommissioned.
	4	The old Study investigation ship Ushio-maru renamed the new training ship Ushio-maru.
2003	4	The Computer Center and the Education and Research Center for Computing and Multimedia Studies evolves into the Information Initiative Center.
	9	The Research and Education Center for Brain Science established.
	10	The University Hospital attached to the School of Medicine and the Dental Hospital attached to the School of Dental Medicine integrated into the Hokkaido University Hospital. The Management Center of Intellectual Property established.
National University Corporation Hokkaido University (2004 to present)		
2004	4	Hokkaido University becomes the National University Corporation Hokkaido University. The Graduate School of Information Science and Technology (stand-alone graduate school) established. The Center for Advanced Research of Energy evolves into the Center for Advanced Research of Energy Conversion Materials.
2005	3	The Center for Northern Eurasian and Northern Pacific Studies abolished.
	4	The Faculty of Fisheries Sciences, the Faculty of Environmental Earth Science, the Graduate School of Fisheries Sciences, and the Graduate School of Environmental Science established. (The Department of Fisheries Sciences and the Department of Environmental Earth Science [stand-alone department] abolished in the graduate school.) The Graduate School of Public Policy (professional graduate school) and the Faculty of Public Policy established. The Center for Advanced Science and Technology and the Creative Scientific Research Institution integrated into the new Creative Scientific Research Institution. The Physical Education Center integrated into the Center for Research and Development in Higher Education. The Research Center for Zoonosis Control established. The Admission Center established.
	5	The Hokkaido University Archives established.
2006	4	The Faculty of Science, the Faculty of Pharmaceutical Sciences, the Research Faculty of Agriculture, the Faculty of Advanced Life Science, the Graduate School of Science, the

		Graduate School of Agriculture, and the Graduate School of Life Science established. (The Department of Science, the Department of Pharmaceutical Sciences, and the Department of Agriculture abolished in the graduate school.) The Center for Advanced Tourism Studies established.
2007	3	The Education and Research Support Office established as an administrative unit. The College of Medical Technology abolished.
	4	The ICT Promotion Office established as an administrative unit. The Faculty of Education, the Research Faculty of Media and Communication, the Graduate School of Education, and the Graduate School of International Media, Communication and Tourism Studies established. (The Department of Education, the Department of International Media and Communication, and the Institute of Language and Cultural Studies abolished.) The Center for Language Learning established. The Center for Ainu and Indigenous Studies established. The Center for Experimental Research in Social Sciences established.
	5	Hiroshi SAEKI named president.
	10	The Management Center of Intellectual Property evolves into the Management Center for Intellectual Property and Innovation.
2008	4	The Faculty of Health Sciences and the Graduate School of Health Sciences (for master's courses) established. The Research Institute for Information Law and Policy established. The Research Center for Environmental Nano and Bio Engineering established. The Research Center for Integrative Mathematics established. The Center for Sustainability Science established. The Admission Center, formerly a University education development center, evolves into an administrative unit.
2009	4	The Management Center for Intellectual Property and Innovation (an administrative unit) reorganized into the Center for Innovation and Business Promotion (an administrative unit). The Front Office for Resource Education and Development established as an administrative unit. The Center of Education and Research for Topological Science and Technology established. The Creative Scientific Research Institution and the Instrumental Analysis Center reorganized into the Creative Research Institution (an administrative unit).
	8	The North Branch of the Hokkaido University Library renamed the North Library.
2010	4	The Faculty of Engineering and the Graduate School of Engineering established. The Graduate School of Chemical Sciences and Engineering established. The Graduate School of Health Sciences (for doctoral courses) established. The Center for Environmental and Health Sciences established. The Health Management Center evolves into the Health Care Center. The Center for Advanced Research of Energy Conversion Materials transferred to the Center for Advanced Research of Energy and Materials, attached to the Graduate School of Engineering.

		The Institute of Low Temperature Science, Research Institute for Electronic Science, Institute for Genetic Medicine, Catalysis Research Center, Slavic Research Center, Information Initiative Center and Research Center for Zoonosis Control authorized as joint usage research centers.
	7	The Office of International Affairs established as an administrative unit, into which the International Student Center is transferred.
	10	The Institute for the Advancement of Higher Education established as an administrative unit, into which the Center for Research and Development in Higher Education is transferred.
	11	The Office for a Sustainable Campus established as an administrative unit.
2011	3	The Office of Safety and Health established as an administrative unit.
	4	The Center for Translational Research established. The Venture Business Laboratory renamed the Meme Media Laboratory. The Environmental Preservation Center transferred to the Office for a Sustainable Campus (an administrative unit). Oshoro-maru training ship authorized as a joint-use educational facility.
2012	7	The Forest Research Station of the Field Science Center for Northern Biosphere, and the Marine Research Station (Akkeshi Marine Station and Muroran Marine Station) of the Field Science Center for Northern Biosphere authorized as joint-use educational facilities.
2013	4	Keizo YAMAGUCHI named president.
2014	2	The Office for Enhancing Institutional Capacity established as an administrative unit.
	4	Center for Food and Medical Innovation established as an administrative unit. The Global Institution for Collaborative Research and Education (GI-CoRE) is established. The Slavic Research Center is re-named the Slavic-Eurasian Research Center. The Research Center for Environmental Nano and Bio Engineering is re-named the Center for Post-modern Socio-metabolic System.
	9	The Center for Translational Research abolished.
2015	3	The Meme Media Laboratory abolished. The Research Institute for Information Law and Policy abolished. The Center for Post-modern Socio-metabolic Systems abolished. The Research Center for Integrative Mathematics abolished. The Center of Education and Research for Topological Science and Technology abolished.
	4	The Arctic Research Center established. The Archaeological Research Center established. The Institute for the Promotion of Business-Regional Collaboration (operational organization) established. (The Center for Innovation and Business Promotion and the Center for Food and Medical Innovation were merged into the Institute.)
	7	The Office of Institutional Research (operational organization) established.

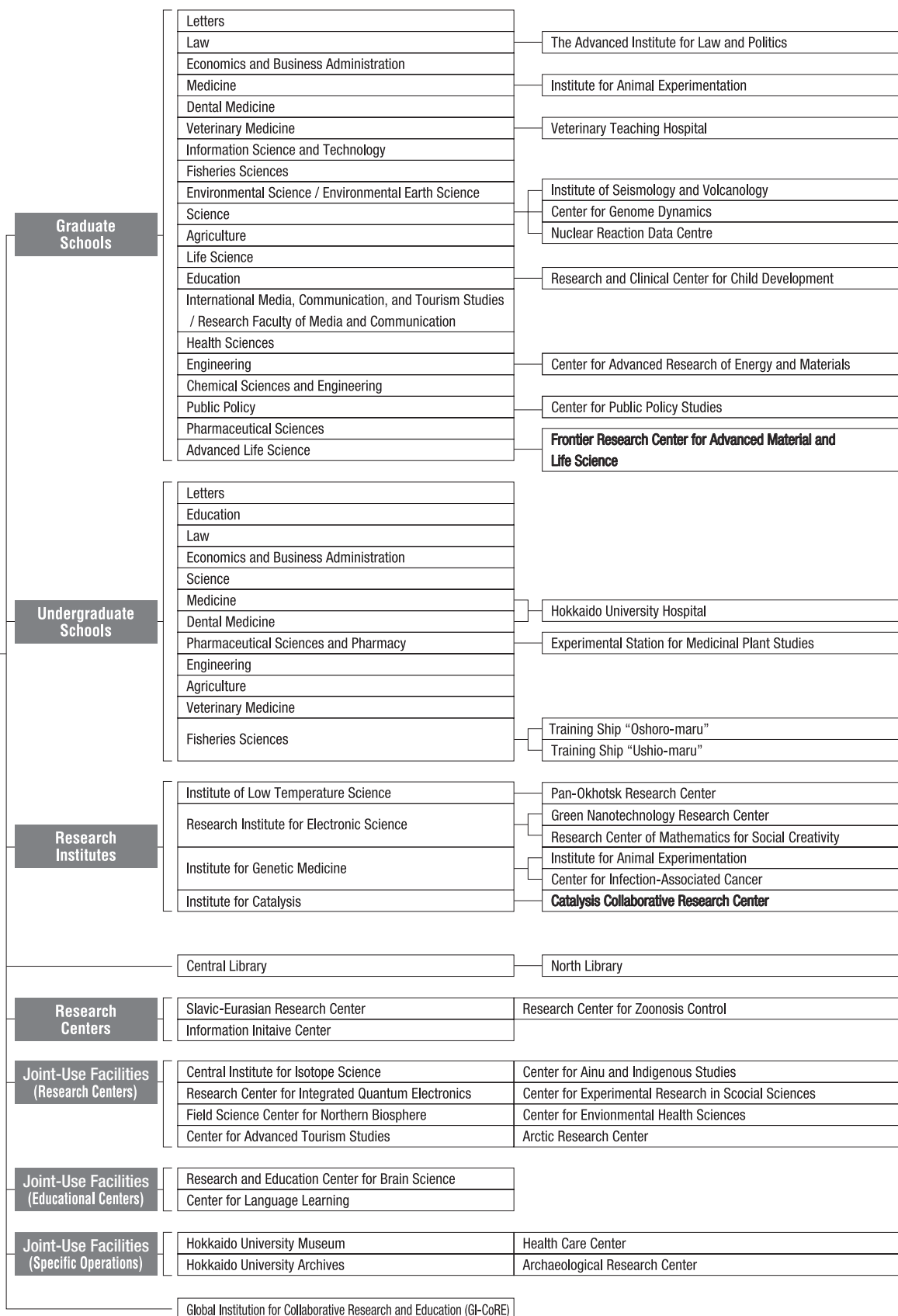
		The Marine Research Station (Usujiri Fisheries Station, Nanae Freshwater Station and Oshoro Marine Station) of the Field Science Center for Northern Biosphere, Institute for the Advancement of Higher Education (Higher education training center) authorized as joint-use educational facilities.
	10	The Catalysis Research Center is reorganized into the Institute for Catalysis
2016	3	Center for Sustainability Science (CENSUS) abolished.
	4	Oshoro-maru (training ship) authorized as joint-use educational facilities again.

(Data as of May 1, 2016)

2. Organizational Structure

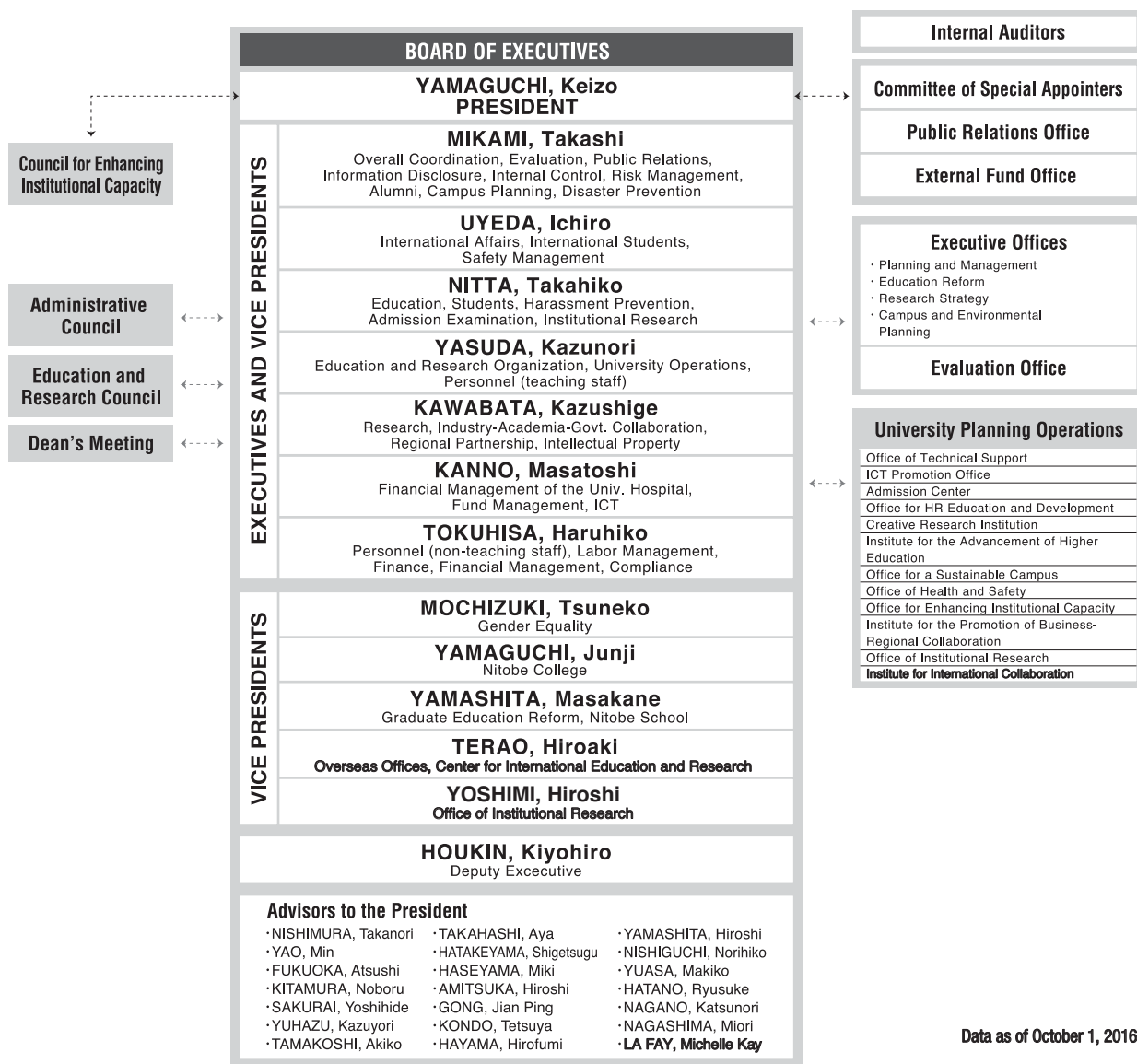
1) General Organization

HOKKAIDO UNIVERSITY



Data as of April 1, 2015

2) Governing Organization



3) Administrative Organization



3. Number of Staff

EXECUTIVE BOARD		President	Executives	Internal Auditors	Professors	Associate Professors	Lecturers	Assistant Professors	Research Associates	URA Staff	Specialist Staff	Administrative Staff	Technical Staff	TOTAL
GOVERNING ORGANIZATION STAFF	Executive Board	1	7	2	-	-	-	-	-	-	-	-	-	10
	Office of Technical Support	-	-	-	-	-	-	-	-	-	-	-	-	0
	ICT Promotion Office	-	-	-	-	-	-	-	-	-	-	-	-	0
	Admission Center	-	-	-	-	-	-	-	-	-	-	-	-	0
	Office for HR Education and Development	-	-	-	-	-	-	-	-	-	-	-	-	0
	Creative Research Institution	-	-	-	-	1	-	1	-	-	1	-	8	11
	Institute for International Collaboration *	-	-	-	4	6	-	4	-	-	7	35	-	56
	Institute of Advancement of Higher Education	-	-	-	2	8	1	-	-	-	-	-	4	15
	Office for a Sustainable Campus	-	-	-	-	-	-	-	-	-	-	-	-	0
	Office of Health and Safety	-	-	-	2	-	-	-	-	-	1	-	-	3
	Office for Enhancing Institutional Capacity	-	-	-	-	-	-	-	-	11	-	-	-	11
	Institute for the Promotion of Business-Regional Collaboration	-	-	-	1	-	-	-	-	-	8	-	-	9
	Office of Institutional Research	-	-	-	-	-	-	-	-	-	-	-	-	0
EDUCATIONAL RESEARCH ORGANIZATION STAFF	Letters	-	-	-	56	34	-	9	-	3	-	-	-	102
	Law	-	-	-	35	15	1	11	2	-	2	1	-	67
	Economics and Business Administration	-	-	-	24	18	-	6	-	-	2	-	-	50
	Medicine	-	-	-	40	31	18	65	3	-	-	-	13	170
	Dental Medicine	-	-	-	19	17	3	49	-	-	-	-	4	92
	Veterinary Science	-	-	-	17	13	5	14	-	-	-	-	2	51
	Information Science and Technology	-	-	-	40	29	-	19	-	-	-	-	-	88
	Fisheries Sciences	-	-	-	29	33	1	15	-	-	-	-	40	118
	Environmental Science / Environmental Earth Science	-	-	-	19	26	-	7	1	-	-	-	-	53
	Science	-	-	-	73	69	10	50	2	-	2	-	18	224
	Pharmaceutical Sciences	-	-	-	16	8	8	23	-	-	-	-	3	58
	Agriculture	-	-	-	44	39	28	14	-	-	-	-	11	136
	Life Science / Advanced Life Science	-	-	-	10	6	2	10	-	-	-	-	-	28
	Education	-	-	-	14	23	-	4	1	-	-	-	-	42
	International Media, Communication, and Tourism Studies	-	-	-	26	28	2	3	-	-	-	-	-	59
	Health Sciences	-	-	-	28	11	6	31	-	-	-	-	-	76
	Engineering	-	-	-	94	97	2	92	1	-	1	-	53	340
	Chemical Sciences and Engineering	-	-	-	-	-	-	-	-	-	-	-	-	0
	Public Policy	-	-	-	12	6	3	-	-	-	-	-	-	21
	Hokkaido University Hospital	-	-	-	4	20	47	83	-	-	-	-	656	810
	Institute of Low Temperature Science	-	-	-	11	11	1	21	-	-	-	-	9	53
	Research Institute of Electronic Science	-	-	-	15	14	-	23	-	-	-	-	10	62
	Institute of Genetic Medicine	-	-	-	8	3	4	17	-	-	-	-	6	38
	Institute for Catalysis	-	-	-	8	6	-	6	-	-	-	-	6	26
	Slavic-Eurasian Research Center	-	-	-	7	4	-	4	1	-	-	-	-	16
	Information Initiative Center	-	-	-	7	4	-	3	-	-	-	-	-	14
	Research Center for Zoonosis Control	-	-	-	6	4	2	3	-	-	-	-	2	17
	Central Institute of Isotope Science	-	-	-	1	1	-	1	-	-	-	-	2	5
	Research Center for Integrated Quantum Electronics	-	-	-	3	3	-	-	-	-	-	-	-	6
	Field Science Center for Northern Biosphere	-	-	-	14	18	-	11	-	-	-	-	71	114
	Center for Advanced Tourism Studies	-	-	-	3	2	-	-	-	-	-	-	-	5
	Center for Ainu and Indigenous Studies	-	-	-	1	6	-	1	-	-	-	-	-	8
	Center for Experimental Research in Social Sciences	-	-	-	-	-	-	1	-	-	-	-	-	1
	Center for Environmental Health Sciences	-	-	-	-	1	-	-	-	-	-	-	-	1
	Arctic Research Center	-	-	-	1	-	-	2	-	-	-	-	-	3
	Research and Education Center for Brain Science	-	-	-	-	-	-	-	-	-	-	-	-	0
	Center for Language Learning	-	-	-	-	-	-	-	-	-	-	-	-	0

EXECUTIVE BOARD		President	Executives	Internal Auditors	Professors	Associate Professors	Lecturers	Assistant Professors	Research Associates	URA Staff	Specialist Staff	Administrative Staff	Technical Staff	TOTAL
EDU. RESEARCH ORG. STAFF	Hokkaido University Museum	-	-	-	3	2	2	2	-	-	-	-	-	9
	Hokkaido University Archives	-	-	-	-	1	-	-	-	-	-	-	1	2
	Health Care Center	-	-	-	1	-	2	-	-	-	-	-	9	12
	Archaeological Research Center	-	-	-	-	-	-	2	-	-	-	-	-	2
	Global Institution for Collaborative Research and Education (GI-CoRE)	-	-	-	5(18)	(15)	(3)	6(8)	-	-	-	-	-	11
ADMINISTRATIVE STAFF	General Affairs and Planning Department	-	-	-	-	-	-	-	-	-	3	90	12	105
	Finance Department	-	-	-	-	-	-	-	-	-	-	81	-	81
	Academic Affairs Department	-	-	-	-	-	-	-	-	-	-	68	-	68
	Research Promotion Department	-	-	-	-	-	-	-	-	-	-	30	1	31
	Facilities Department	-	-	-	-	-	-	-	-	-	-	9	25	34
	Graduate School of Letters / Faculty of Letters Office	-	-	-	-	-	-	-	-	-	-	16	-	16
	Faculty of Education Office	-	-	-	-	-	-	-	-	-	-	8	-	8
	Graduate School of Law / School of Law Office	-	-	-	-	-	-	-	-	-	-	18	-	18
	Economics and Business Administration Office	-	-	-	-	-	-	-	-	-	-	8	-	8
	Science / Life Sciences Office	-	-	-	-	-	-	-	-	-	-	42	2	44
	School of Medicine Office	-	-	-	-	-	-	-	-	-	-	45	2	47
	School of Dental Medicine Office	-	-	-	-	-	-	-	-	-	-	10	1	11
	School of Pharmaceutical Sciences and Pharmacy Office	-	-	-	-	-	-	-	-	-	-	10	-	10
	School of Engineering Office	-	-	-	-	-	-	-	-	-	-	69	3	72
	School of Agriculture Office	-	-	-	-	-	-	-	-	-	-	25	2	27
	School of Veterinary Medicine Office	-	-	-	-	-	-	-	-	-	-	14	-	14
	Hakodate Campus Office	-	-	-	-	-	-	-	-	-	-	23	4	27
	Office of Hokkaido University Hospital	-	-	-	-	-	-	-	-	-	-	118	6	124
	Graduate School of Environmental Science Office	-	-	-	-	-	-	-	-	-	-	10	-	10
	Int'l Media, Communication, and Tourism Studies Office	-	-	-	-	-	-	-	-	-	-	10	-	10
	Institute of Low Temperature Science Office	-	-	-	-	-	-	-	-	-	-	9	-	9
	University Library Office	-	-	-	-	-	-	-	-	-	-	89	-	89
	Northern Campus Administration	-	-	-	-	-	-	-	-	-	-	16	-	16
	Field Science Center for Northern Biosphere Office	-	-	-	-	-	-	-	-	-	-	18	-	18
	Office of Internal Auditors	-	-	-	-	-	-	-	-	-	-	7	-	7
	TOTAL	1	7	2	703	618	148	613	11	14	27	879	986	4,009

Data as of May 1, 2016

* Staff numbers in parenthesis () for the Global Institution for Collaborative Research and Education (GI-CoRE) indicate numbers of staff dedicated to this HU unit.
The staff indicated are included in total staff numbers (Graduate School of Medicine: 2; Graduate School of Veterinary Medicine: 3; Graduate School of Information Science and Technology: 1; Faculty of Environmental Earth Science: 3; Research Faculty of Agriculture: 10; Faculty of Advanced Life Science: 4; Faculty of Health Sciences: 1; Faculty of Engineering: 3; Hokkaido University Hospital: 3; Institute of Low Temperature Science : 1; Research Center for Zoonosis Control: 10; Arctic Research Center: 3).

4. Number of Students / Degrees Granted

1) Undergraduate Courses

Faculties	Regular Students	Research Students	Auditors	TOTAL
Letters	628	19	101	748
Education	192	10	15	217
Law	673	0	14	687
Economics and Business Administration	643	12	17	672
Science	978	0	17	995
Medicine	1,148	0	7	1,155
Dental Medicine	258	2	-	260
Pharmaceutical Sciences and Pharmacy	303	-	3	306
Engineering	2,303	-	49	2,352
Agriculture	698	1	16	715
Veterinary Medicine	211	-	-	211
Fisheries Science	666	5	6	677
Modern Japanese Studies Program (MJSP)	11	-	-	11
General Education	2,690	-	128	2,818
TOTAL	11,402	49	373	11,824

2) Graduate Courses

Faculties	Regular Students			Research Students	Auditor	TOTAL
	Master's Course	Professional Course	Doctoral Course			
Letters	203	-	184	8	20	415
Law	35	107	43	6	13	204
Economics and Business Administration	76	26	23	-	1	126
Medicine	52	-	444	6	1	503
Dental Medicine	-	-	125	11	-	136
Veterinary Medicine	-	-	102	5	-	107
Information Science and Technology	369	-	151	13	7	540
Fisheries Science	211	-	56	-	9	276
Faculty of Fisheries Science	-	-	-	1	-	1
Environmental Science	319	-	164	-	1	484
Faculty of Environmental Earth Science	-	-	-	15	-	15
Science	280	-	154	-	9	443
Faculty of Science	-	-	-	9	-	9
Faculty of Pharmaceutical Sciences	-	-	-	1	-	1
Agriculture	337	-	151	-	4	492
Research Faculty of Agriculture	-	-	-	8	-	8
Life Science	270	-	155	-	5	430
Faculty of Advanced Life Science	-	-	-	1	-	1
Education	99	-	89	-	5	193
Faculty of Education	-	-	-	6	-	6
Int'l Media, Communication and Tourism Studies	104	-	80	-	5	189
Research Faculty of Media, Communication and Tourism Studies	-	-	-	13	-	13
Health Sciences	111	-	40	-	2	153
Research Faculty of Health Sciences	-	-	-	2	-	2
Engineering	728	-	177	-	19	924
Faculty of Engineering	-	-	-	22	-	22
Graduate School of Engineering	-	-	6	-	-	6
Graduate School of Chemical Sciences and Engineering	302	-	161	-	2	465
Graduate School of Public Policy	-	78	-	-	4	82
Faculty of Public Policy	-	-	-	4	-	4
TOTAL	3,496	211	2,305	131	107	6,250

3) Institutes and Centers

Institutes / Centers	Research Students, etc.
Center for Advanced Tourism Studies	2
Institute of Low Temperature Science	1
Research Institute for Electronic Science	2
Institute for Genetic Medicine	3
Institute for Catalysis	1
Slavic-Eurasian Research Center	1
Information Initiative Center	3
Institute for International Collaboration	81
Hokkaido University Museum	1
Field Science Center for Northern Biosphere	2
TOTAL	97

4) Number of Degree Granted

Degrees	2016	Overall
Bachelor's Degrees	2,552	136,655
Master's Degrees	1,538	46,900
Professional Degrees	83	1,362
Doctorates	448	23,914
TOTAL	4,621	208,831

For international student numbers concerning faculty and course, see page 8 of the main Guidebook

Data as of May 1, 2016

5. Number of International Students

1) Distribution by Country / Region

AREA	COUNTRY	Letters	Law	Economics and Business	Medicine	Dental Medicine	Veterinary Medicine	Information Science and Technology	Fisheries Sciences	Environmental Science / Environmental Earth Science	Science	Pharmaceutical Sciences	Agriculture	Life Science / Advanced Life Science	Education	Interdisciplinary Media, Comm. and Tourism Studies / Media and Comm	Health Sciences	Engineering	Graduate School of Chemical Sciences and Engineering	Public Policy	Modern Japanese Studies Program (MJSP)	Institute for the Advancement of Higher Education (First Year Education Division)	Institute of Low Temperature Science	Research Institute for Electronic Science	Institute for Catalysis	Slavic-Eurasian Research Center	Information Initiative Center	Field Science Center for Northern Biosphere	Center for Advanced Tourism Studies	Institute for International Collaboration	TOTAL		
Asia	Bangladesh	1	-	-	-	4	3	-	3	8	1	-	5	8	-	-	-	5	6	-	-	-	-	-	-	-	-	1	-	-	45		
	Brunei	-	-	-	-	-	-	-	-	-	-	-	1	-	-	-	-	-	-	-	-	-	-	-	-	-	-	-	-	-	1		
	Cambodia	-	-	-	-	-	-	-	-	-	-	-	-	-	-	-	-	7	-	-	-	-	-	-	-	-	-	-	-	-	7		
	China	163	43	75	23	2	5	58	36	78	17	-	44	29	58	85	8	95	27	17	-	8	1	1	1	-	3	-	-	24	901		
	India	-	-	-	-	-	-	2	1	4	3	-	-	9	-	-	-	6	3	-	-	-	-	-	-	-	-	1	-	-	29		
	Indonesia	3	1	-	1	-	2	1	3	9	13	-	20	1	-	-	-	8	-	-	1	-	-	-	-	-	-	-	-	-	2	65	
	Korea	18	3	5	2	-	4	4	4	4	8	-	23	1	3	3	-	34	5	-	-	9	-	-	-	-	-	-	-	-	3	133	
	Laos	-	-	1	-	-	-	-	-	-	-	-	-	-	-	-	-	2	-	-	-	-	-	-	-	-	-	-	-	-	-	3	
	Malaysia	-	-	-	2	-	-	-	2	-	1	-	3	2	1	1	-	12	-	-	-	2	-	-	-	-	-	-	-	-	1	27	
	Mongolia	-	-	-	1	-	4	1	-	4	4	-	2	1	-	-	-	-	-	-	-	-	-	-	-	-	-	-	-	-	-	17	
	Myanmar	-	-	-	-	-	4	1	-	-	-	-	2	-	-	-	-	-	-	-	-	-	-	-	-	-	-	-	-	-	-	7	
	Nepal	-	-	-	1	-	4	1	-	2	-	-	-	-	-	-	-	1	2	-	-	-	-	-	-	-	-	-	-	-	1	12	
	Pakistan	1	-	-	-	-	-	-	-	-	1	-	-	-	1	-	-	-	5	1	-	-	-	-	-	-	-	-	-	-	1	10	
	Philippines	2	-	-	-	-	1	-	-	-	4	4	-	-	2	-	-	-	7	3	-	-	-	-	-	-	-	-	-	-	2	25	
	Singapore	1	-	-	-	-	-	-	-	-	1	-	-	-	-	1	-	-	-	-	-	2	3	-	-	-	-	-	-	-	-	1	9
	Sri Lanka	-	-	-	-	-	2	1	-	-	-	-	-	-	-	-	-	-	5	-	-	-	-	-	-	-	-	-	-	-	-	1	9
	Taiwan	12	10	6	2	-	-	1	-	3	3	-	2	1	2	6	1	4	1	1	-	2	-	-	-	-	-	-	-	-	5	62	
	Thailand	1	-	-	-	2	9	1	2	1	2	-	7	4	1	-	-	18	1	-	-	2	-	-	-	-	-	-	-	-	-	5	56
	Vietnam	-	-	2	-	-	2	-	-	6	8	-	1	-	-	2	-	6	1	-	2	3	-	-	-	-	-	-	-	-	3	36	
Oceania	Australia	-	-	-	-	-	-	-	-	-	-	-	-	-	1	-	-	-	-	-	-	1	-	-	-	-	-	-	-	-	3	5	
	New Zealand	-	-	-	1	-	-	-	-	-	-	-	-	-	-	-	-	-	-	-	-	-	-	-	-	-	-	-	-	-	-	1	
	Papua New Guinea	-	-	-	-	-	-	-	-	-	1	-	-	-	-	-	-	-	-	-	-	-	-	-	-	-	-	-	-	-	1	2	
	Solomon Is.	-	-	-	-	-	-	-	-	1	-	-	-	-	-	-	-	1	-	-	-	-	-	-	-	-	-	-	-	-	-	2	
Europe	Austria	-	-	-	-	-	-	-	-	-	-	-	-	1	-	-	-	-	-	-	-	-	-	-	-	-	-	-	-	-	-	1	
	Azerbaijan	1	-	1	-	-	-	-	-	-	-	-	-	-	-	-	-	-	-	-	-	-	-	-	-	-	-	-	-	-	-	2	
	Belarus	-	-	-	-	-	-	-	-	-	-	-	-	-	1	-	-	-	-	-	-	-	-	-	-	-	-	-	-	-	-	1	
	Cyprus	-	-	-	-	-	-	-	-	-	-	-	-	1	-	-	-	-	-	-	-	-	-	-	-	-	-	-	-	-	-	1	
	Czech	-	-	-	-	-	-	-	-	-	-	-	-	-	-	-	-	-	1	-	-	-	-	-	-	-	-	-	-	-	-	1	
	Denmark	2	-	-	-	-	-	-	-	-	1	-	-	-	-	-	-	-	1	-	-	-	-	-	-	-	-	-	-	-	-	4	
	Estonia	-	-	-	-	-	-	-	-	-	-	-	-	-	-	-	-	-	1	-	-	-	-	-	-	-	-	-	-	-	-	1	
	Finland	3	-	1	-	-	-	-	-	-	-	-	-	-	-	-	-	-	2	-	-	1	1	-	-	-	-	-	-	-	1	9	
	France	5	-	-	-	-	-	4	-	1	-	-	-	-	-	-	-	-	1	-	-	-	-	-	-	-	-	-	-	-	2	13	
	Germany	1	-	-	-	-	-	3	-	-	1	-	-	-	1	-	1	-	3	-	-	-	1	-	-	-	-	-	-	-	-	2	13
	Greece	-	-	-	-	-	-	-	-	1	-	-	-	-	-	-	-	-	-	-	-	-	-	-	-	-	-	-	-	-	-	1	
	Netherland	-	-	-	-	-	-	-	-	-	-	-	-	-	-	-	-	-	-	-	-	-	-	-	-	-	-	-	-	1	1		
	Hungary	1	-	-	-	-	-	1	-	1	-	-	-	-	-	-	-	-	-	-	-	-	-	-	-	-	-	-	-	-	-	3	
	Italy	1	-	-	-	-	-	-	-	-	-	-	-	-	-	-	-	-	1	-	-	-	-	-	-	-	-	-	-	-	1	3	
	Kazakhstan	2	-	-	-	-	-	-	-	-	-	-	-	-	-	-	-	-	-	-	-	-	-	-	-	-	-	-	-	-	4	6	
	Kyrgyzstan	1	-	-	-	-	-	-	-	-	-	-	-	-	-	-	-	-	-	-	-	-	-	-	-	-	-	-	-	-	-	1	
	Latvia	1	-	-	-	-	-	-	-	-	-	-	-	-	-	-	-	-	-	-	-	-	-	-	-	-	-	-	-	-	-	1	
	Poland	-	-	-	-	-	-	3	-	-	-	-	-	-	1	-	-	-	1	-	-	-	1	-	-	-	1	-	-	-	2	9	
	Russia	5	-	-	-	-	-	1	-	1	-	-	-	-	1	2	-	-	1	-	-	-	-	-	-	-	-	-	-	-	4	15	
	Slovakia	1	-	-	-	-	-	-	-	-	-	-	-	-	-	-	-	-	-	-	-	-	-	-	-	-	-	-	-	-	-	1	
	Spain	1	-	-	-	-	-	-	-	-	-	1	-	-	1	-	-	-	-	-	-	-	-	-	-	-	-	-	-	-	-	3	
	Sweden	1	1	-	-	-	-	2	-	-	1	-	-	-	-	-	-	-	1	-	-	-	2	-	-	-	-	-	-	-	-	8	
	Switzerland	1	-	-	-	-	-	-	-	-	1	-	-	-	-	-	-	-	-	-	-	-	-	-	-	-	-	-	-	-	-	2	
	Ukraine	-	-	-	-	-	-	-	-	-	-	1	-	-	-	-	-	-	-	-	-	-	-	-	-	-	-	-	-	-	-	2	3
	United Kingdom	4	1	-	1	-	1	-	-	-	-	-	-	-	-	-	-	-	-	-	-	-	-	-	-	-	-	-	-	-	1	8	
	Uzbekistan	-	-	1	-	-	-	-	-	-	-	-	-	-	-	-	-	-	-	-	-	-	-	-	-	-	-	-	-	-	-	1	
N. Am.	Canada	2	-	-	-	-	-	-	-	1	-	-	-	-	-	-	-	1	-	-	-	1	-	-	-	-	-	-	-	-	-	5	
	U.S.A.	10	1	2	-	-	1	-	-	2	-	-	2	1	1	-	1	5	-	-	5	5	-	-	-	-	-	-	1	1	38		
Central and South America	Bolivia	-	-	-	-	-	-	-	-	-	-	-	-	-	-	-	-	1	-	-	-	-	-	-	-	-	-	-	-	-	-	1	
	Brazil	-	-	-	1	-	-	-	-	-	1	-	1	-	-	-	-	10	1	-	-	-	-	-	-	-	-	-	-	2	16		
	Columbia	-	-	-	-	-	-	-	-	1	-	-	1	-	-	-	-	-	-	-	-	-	-	-	-	-	-	-	-	-	2		
	Cuba	-	-	-	-	-	-	-	-	-	-	-	1	-	-	-	-	-	-	-	-	-	-	-	-	-	-	-	-	-	-	1	
	Ecuador	-	-	-	-	-	-	-	-	1	-	-	-	-	-	-	-	1	-	-	-	-	-	-	-	-	-	-	-	-	-	2	
	Guatemala	-	-	-	-	-	-	-	-	-	-	-	-	-	-	-	-	1	-	-	-	-	-	-	-	-	-	-	-	-	1		
	Honduras	-	-	-	-	-	-	-	-	-	-	-	-	-	-	-	-	1	-	-	-	-	-	-	-	-	-	-	-	-	1		
	Mexico	-	-	-	-	-	-	-	-	-	-	-	-	-	-	-	-	2	-	-	-	-	-	-	-	-	-	-	-	-	-	2	
	Panama	-	1	-	-	-	-	-	-	-	1	-	-	-	-	-	-	-	-	-	-	-	-	-	-	-	-	-	-	-	-	2	
	Peru	-	-	1	-	-	-	-	-	1	1	-	-	-	-	-	-	1	-	-	-	-	-	-	-	-	-	-	-	-	-	4	
	Venezuela	1	-	-	-	-	-	-	-	-	-	-	-	-	-	-	-	-	-	-	-	-	-	-	-	-	-	-	-	-	-	1	
Middle East	Iran	-	-	-	-	-	1	-	-	-	-	-	1	-	-	-	-	1	1	-	-	-	-	-	-	-	-	-	-	-	1	5	
	Jordan	-	-	-	-	-	1	-	-	-	-	-	-																				

AREA	COUNTRY	Letters	Law	Economics and Business	Medicine	Dental Medicine	Veterinary Medicine	Information Science and Technology	Fisheries Sciences	Environmental Science / Environmental Earth Science	Science	Pharmaceutical Sciences	Agriculture	Life Science / Advanced Life Science	Education	International Media, Comm. and Tourism Studies / Media and Comm	Health Sciences	Engineering	Graduate School of Chemical Sciences and Engineering	Public Policy	Modern Japanese Studies Program (MJSP)	Institute for the Advancement of Higher Education / First Year Education Division	Institute of Low Temperature Science	Research Institute for Electronic Science	Institute for Catalysis	Slavic-Eurasian Research Center	Information Initiative Center	Field Science Center for Northern Biosphere	Center for Advanced Tourism Studies	Institute for International Collaboration	TOTAL
Middle East	Oman	-	-	-	-	-	-	-	-	-	-	-	-	-	-	-	-	1	-	-	-	-	-	-	-	-	-	-	-	1	
	Palestinian Authority	-	-	-	-	-	-	-	-	-	-	-	-	1	-	-	-	-	-	-	-	-	-	-	-	-	-	-	-	1	
	Syria	-	-	-	-	-	-	1	-	-	-	-	-	-	-	-	-	-	-	-	-	-	-	-	-	-	-	-	-	1	
Africa	Benin	-	-	-	-	-	-	-	-	-	-	-	-	-	-	-	-	1	-	-	-	-	-	-	-	-	-	-	-	1	
	Burkina Faso	-	-	-	-	-	-	-	-	-	-	-	-	-	-	1	-	2	-	-	-	-	-	-	-	-	-	-	-	3	
	Cabo Verde	-	-	-	-	-	-	-	-	-	-	-	-	-	-	-	-	1	-	-	-	-	-	-	-	-	-	-	-	1	
	Cote d'Ivoire	-	-	-	-	-	-	-	-	-	-	-	-	-	-	-	-	1	-	-	-	-	-	-	-	-	-	-	-	1	
	Egypt	-	-	-	3	-	4	2	-	1	1	-	-	-	-	-	-	1	1	-	-	-	-	-	-	-	-	-	-	13	
	Eritrea	-	-	1	-	-	-	-	-	-	-	-	-	-	-	-	-	-	-	-	-	-	-	-	-	-	-	-	-	1	
	Ethiopia	-	-	-	-	-	-	1	-	-	-	-	-	1	-	-	1	2	-	-	-	-	-	-	-	-	-	-	-	5	
	Gabon	-	-	-	-	-	-	-	-	-	-	-	-	-	-	-	-	1	-	-	-	-	-	-	-	-	-	-	-	1	
	Ghana	-	-	-	1	-	2	-	-	-	-	-	-	-	-	-	-	-	-	1	-	-	-	-	-	-	-	-	-	4	
	Guinea	-	-	-	-	-	-	-	-	1	-	-	-	-	-	-	-	-	-	-	-	-	-	-	-	-	-	-	-	1	
	Kenya	-	-	2	-	-	1	-	-	2	-	-	-	-	-	-	-	-	1	-	-	-	-	-	-	-	-	-	-	6	
	Madagascar	-	-	1	-	-	-	-	-	1	-	-	-	-	-	-	-	-	-	-	-	-	-	-	-	-	-	-	-	2	4
	Malawi	-	-	-	-	-	-	-	-	-	-	-	-	-	-	-	-	-	3	-	-	-	-	-	-	-	-	-	-	-	3
	Mozambique	-	-	-	-	-	-	-	-	-	1	-	-	1	-	-	-	-	3	-	-	-	-	-	-	-	-	-	-	-	5
	Nigeria	-	-	-	-	-	-	-	-	1	1	-	3	1	-	-	-	3	-	-	-	-	-	-	-	-	-	-	-	-	9
	Senegal	-	-	-	-	-	-	-	-	-	-	-	-	-	-	-	-	1	-	-	-	-	-	-	-	-	-	-	-	-	1
	South Africa	-	-	-	-	-	-	-	-	1	-	-	-	-	-	-	-	-	-	-	-	-	-	-	-	-	-	-	-	-	1
Tanzania	-	-	-	-	-	-	-	-	-	-	-	-	-	-	-	-	-	-	-	-	-	-	-	-	-	-	-	-	1	1	
Uganda	-	-	-	-	-	-	-	-	-	-	-	-	-	-	-	-	-	-	-	-	-	1	-	-	-	-	-	-	-	1	
Zambia	1	-	-	-	-	3	3	-	-	-	-	-	1	1	-	-	1	-	-	-	-	-	-	-	-	-	-	-	-	10	
TOTAL (87 Countries / Regions)		247	61	99	39	8	52	94	51	143	77	0	122	68	71	101	13	276	52	18	11	42	1	1	1	1	3	2	1	80	1735
International Student Numbers (other)		7	3	0	2	2	1	1	0	1	5	0	3	3	2	0	1	9	0	0	0	1	0	0	0	0	0	0	1	42	

Data as of May 1, 2016

2) Distribution within Hokkaido University

Faculties	Undergraduate	Master's Course	Graduate Professional Course	Doctoral Course	Research Students	Jpn Lang & Culture Studies Prog (JLCSPP)	Jpn Lang Class Students	Auditors	Total Int'l Students	Total Other Int'l Students	Combined Total
Graduate School / Faculty of Letters	1(1)	70(46)	0	63(36)	21(15)	-	-	92(65)	247(163)	7(6)	254(169)
Graduate School / School of Law	0(0)	17(12)	0	20(6)	6(4)	-	-	18(13)	61(35)	3(2)	64(37)
Graduate School / School of Economics and Business Administration	1(1)	63(43)	2(0)	7(4)	12(7)	-	-	14(12)	99(67)	-	99(67)
Graduate School / School of Medicine	3(1)	6(5)	-	22(12)	2(2)	-	-	6(0)	39(20)	2(0)	41(20)
Graduate School / School of Dental Medicine	0(0)	0(0)	-	8(3)	0(0)	-	-	-	8(3)	2(1)	10(4)
Graduate School / School of Veterinary Medicine	1(1)	0(0)	-	49(27)	2(2)	-	-	-	52(30)	1(0)	53(30)
Graduate School of Information Science and Technology	0(0)	31(7)	-	44(12)	12(3)	-	-	7(2)	94(24)	1(0)	95(24)
Graduate School / Faculty / School of Fisheries Science	2(1)	15(7)	-	16(7)	3(1)	-	-	15(8)	51(24)	-	51(24)
Graduate School / Faculty of Environmental Earth Science	0(0)	75(39)	-	54(29)	14(9)	-	-	-	143(77)	1(0)	144(77)
Graduate School / Faculty / School of Science	2(0)	26(10)	-	31(7)	6(2)	-	-	12(6)	77(25)	5(0)	82(25)
Faculty / School of Pharmaceutical Sciences	0(0)	0(0)	-	0(0)	0(0)	-	-	-	0(0)	-	0(0)
Graduate School / Research Faculty / School of Agriculture	5(3)	27(14)	-	72(29)	4(3)	-	-	14(9)	122(58)	3(2)	125(60)
Graduate School of Life Science / Faculty of Advanced Life Science	0(0)	14(9)	-	50(19)	0(0)	-	-	4(4)	68(32)	3(0)	71(32)
Graduate School / Faculty / School of Education	3(2)	37(31)	-	13(9)	11(9)	-	-	7(3)	71(54)	2(1)	73(55)
Graduate School of Int'l Media, Communication and Tourism Studies Research Faculty of Media and Communication	0(0)	64(53)	-	21(13)	13(10)	-	-	3(2)	101(78)	-	101(78)
Graduate School / Research Faculty of Health Sciences	0(0)	6(6)	-	5(2)	1(1)	-	-	1(1)	13(10)	1(1)	14(11)
Graduate School / Faculty / School of Engineering	46(10)	69(18)	-	80(19)	18(2)	-	-	63(17)	276(66)	9(0)	285(66)
Graduate School of Chemical Sciences and Engineering	0(0)	12(4)	-	38(19)	0(0)	-	-	2(1)	52(24)	-	52(24)
Graduate School / Faculty of Public Policy	0(0)	0(0)	14(9)	0(0)	4(3)	-	-	-	18(12)	-	18(12)
Modern Japanese Studies Program (MJSP)	11(9)	0(0)	-	0(0)	0(0)	-	-	-	11(9)	-	11(9)
First Year Education Division	42(19)	0(0)	-	0(0)	0(0)	-	-	-	42(19)	1(0)	43(19)
SUBTOTAL	117(48)	532(304)	16(9)	593(253)	129(73)	0(0)	0(0)	258(143)	1,645(830)	41(13)	1,686(843)
Institute of Low Temperature Science	-	-	-	-	1(1)	-	-	-	1(1)	-	1(1)
Research Institute for Electronic Science	-	-	-	-	1(1)	-	-	-	1(1)	-	1(1)
Institute for Catalysis	-	-	-	-	1(1)	-	-	-	1(1)	-	1(1)
Slavic-Eurasian Research Center	-	-	-	-	1(0)	-	-	-	1(0)	-	1(0)
Information Initiative Center	-	-	-	-	3(2)	-	-	-	3(2)	-	3(2)
Field Science Center for Northern Biosphere	-	-	-	-	2(0)	-	-	-	2(0)	-	2(0)
Center for Advanced Tourism Studies	-	-	-	-	1(0)	-	-	-	1(0)	-	1(0)
Institute for International Collaboration	-	-	-	-	0	68(57)	12(5)	-	80(62)	1(1)	81(63)
SUBTOTAL	0(0)	0(0)	0(0)	0(0)	10(5)	68(57)	12(5)	0(0)	90(67)	1(1)	91(68)
GRAND TOTAL	117(48)	532(304)	16(9)	593(253)	139(78)	68(57)	12(5)	258(143)	1,735(897)	42(14)	1,777(911)

() indicate number of women

6. International Academic Exchange

1) Inter-University Exchange Agreements

(175 Agreements, 179 Universities in 47 Countries / Regions)

Data as of November 1, 2016

Countries / Regions		Counterparts	Concluded
Asia	Bangladesh	University of Dhaka	December 24, 2009 *
	China	University of Science and Technology Beijing	December 26, 1986 *
		Zhejiang University	January 20, 2002 *
		Peking University	February 19, 2003 *
		Fudan University	August 3, 2004 *
		Jilin University	September 22, 2004 *
		Nankai University	May 11, 2006 *
		Nanjing University	May 11, 2006 *
		Xi'an Jiaotong University	May 26, 2008 *
		Tsinghua University	June 30, 2008 *
		Northeast Normal University	May 8, 2009 *
		Sichuan University	October 15, 2009 *
		Wuhan University	November 30, 2009 *
		Dalian University of Technology	January 20, 2010 *
		Beijing Normal University	January 20, 2010 *
		Lanzhou University	April 9, 2010 *
		Southeast University	October 29, 2010 *
		Xiamen University	November 25, 2010 *
		Shanghai Ocean University	December 1, 2010 *
		Ocean University of China	February 3, 2011 *
		Chinese University of Hong Kong	September 30, 2011 *
		Northwest Agriculture and Forestry University	October 13, 2011 *
		Shanghai Jiao Tong University	October 19, 2011 *
		Huazhong University of Science and Technology	December 27, 2012 *
		Hunan University	October 10, 2013 *
		City University of Hong Kong	July 16, 2014 *
		Renmin University of China	December 29, 2015 *
	India	University of Delhi	February 26, 2010 *
		University of Mysore	January 29, 2015 *
	Indonesia	University of Palangka Raya	August 26, 2006 *
		Bogor Agricultural University	July 29, 2009 *
		Universitas Gadjah Mada	July 23, 2010 *
		Institut Teknologi Bandung	March 20, 2014 *
	Korea	Seoul National University	October 1, 1997 *
		Chonbuk National University	February 9, 2000 *
		Yeungnam University	August 4, 2000 *
		Pukyong National University	October 25, 2000 *
		Chungnam National University	July 9, 2001 *
		Kangwon National University	June 13, 2003 *
		Chungbuk National University	December 6, 2007 *
		Hankyong National University	February 16, 2009 *
		Dong-eui University	April 23, 2009 *
		Korea Maritime University	June 3, 2010 *
		Korea University	October 15, 2010 *
		Yonsei University	December 6, 2010 *
		Kongju National University	August 2, 2011 *
		Incheon National University	April 16, 2012 *
		Hanyang University	July 10, 2012 *
		Sungkyunkwan University	December 27, 2012 *
		University of Seoul	September 23, 2013 *
		Korea Advanced Institute of Science and Technology	April 18, 2016 *
	Malaysia	Universiti Sains Malaysia	June 7, 2010 *
		Universiti Malaysia Sabah	April 12, 2016 *
	Mongolia	Mongolian University of Life Sciences	January 26, 2009 *
		National University of Mongolia	December 22, 2011 *
	Myanmar	Patheingyi University	June 29, 2015 *
	Nepal	Tribhuvan University	October 24, 2010 *
	Philippines	De La Salle University	January 11, 2009 *
		University of the Philippines	July 16, 2014 *

* indicates an Academic Exchange Agreement and Memorandum of Understanding on Student Exchange exist

Countries / Regions		Counterparts	Concluded
Asia	Sri Lanka	University of Peradeniya	November 14, 2006 *
	Taiwan	National Taiwan University	March 3, 2005 *
		Academia Sinica	September 11, 2008 *
		National Chung Cheng University	November 4, 2009 *
		TamKang University	November 29, 2010 *
		National Chung Hsing University	March 14, 2012 *
		National Tsing Hua University	August 17, 2012 *
		National Cheng Kung University	January 23, 2013 *
		National Chiao Tung University	March 22, 2013 *
		National Taiwan Normal University	July 8, 2013 *
		National Taiwan Ocean University	April 23, 2014 *
		National Chengchi University	June 19, 2014 *
		Taipei Medical University	August 28, 2015 *
	Thailand	Asian Institute of Technology	November 4, 2008 *
		Mahidol University	November 26, 2008 *
		Kasetsart University	January 6, 2009 *
		Chulalongkorn University	July 3, 2009 *
		King Mongkut's University of Technology Thonburi	December 24, 2013 *
		Thammasat University	January 30, 2014 *
	Vietnam	King Mongkut's Institute of Technology Ladkrabang	May 30, 2014 *
		Vietnam National University Ho Chi Minh City	February 23, 2010 *
		VNU University of Science	March 1, 2013 *
		Can Tho University	March 1, 2013 *
		Vietnam National University Ho Chi Minh City University of Technology	March 1, 2013 *
Oceania	Australia	University of Tasmania	January 9, 2009 *
		Australian National University	June 14, 2012 *
		University of New South Wales	November 5, 2012 *
		University of Sydney	April 30, 2013 *
		University of the Sunshine Coast	August 19, 2013 *
		Murdoch University	January 30, 2014 *
	New Zealand	University of Auckland	July 25, 2003 *
		GNS Science	February 28, 2014 *
Europe	Belgium	Ghent University	June 13, 2013 *
	Denmark	Aarhus University	February 27, 2014 *
	Estonia	University of Tartu	October 28, 2008 *
	Finland	University of Oulu	December 11, 2001 *
		University of Helsinki	March 11, 2011 *
		University of Lapland	June 8, 2011 *
		Aalto University	July 5, 2013 *
		University of Turku	May 21, 2014 *
		University of Eastern Finland	February 2, 2015 *
	France	Université de Strasbourg	October 10, 2000 *
		For the Consortium of Universities of Grenoble: Université Grenoble Alpes, Institut National Polytechnique de Grenoble, Institut d'Etudes Politiques de Grenoble, Université de Savoie	October 10, 2000 *
		Rennes Institute of Political Studies	September 4, 2002 *
		Institut d'Etudes Politiques de Paris	May 18, 2007 *
		École Polytechnique	June 29, 2008 *
		École Supérieure de Physique et de Chimie Industrielles de Paris	March 31, 2009 *
		Université de la Méditerranée (Aix-Marseille II)	May 18, 2009 *
		École Nationale Supérieure de Mécanique et d'Aérotechnique	March 25, 2013 *
	Germany	Ludwig-Maximilians-Universität München	January 31, 1983 *
		University of Bremen	February 11, 2010 *
		Technische Universität München	July 6, 2010 *
		Universität Heidelberg	April 23, 2014 *
	Hungary	Budapest University of Technology and Economics	November 4, 2004 *
	Ireland	University College Dublin	November 5, 2014 *
	Italy	Politecnico di Torino	July 1, 2008 *
		University of Milano-Bicocca	December 4, 2015 *
	Kazakhstan	Al-Farabi Kazakh National University	August 1, 2011 *
	Latvia	University of Latvia	February 24, 2015 *
	Lithuania	Vilnius University	December 9, 2014 *

* Indicates an Academic Exchange Agreement and Memorandum of Understanding on Student Exchange exist

Countries / Regions		Counterparts	Concluded
Europe	Luxembourg	University of Luxembourg	October 1, 2015 *
	Netherlands	Vrije Universiteit Amsterdam	January 18, 2016 *
	Norway	University of Bergen	October 10, 2013 *
	Poland	AGH University of Science and Technology	July 6, 2010 *
		Warsaw University of Technology	August 8, 2014 *
		University of Warsaw	March 13, 2015 *
	Romania	University of Bucharest	April 23, 2014 *
	Russia	Lomonosov Moscow State University	October 10, 2001 *
		Sakhalin State University	October 23, 2007 *
		Far Eastern Federal University	November 12, 2007 *
		Far Eastern Branch of the Russian Academy of Sciences	July 23, 2009 *
		Irkutsk State University	March 30, 2010 *
		North-Eastern Federal University	April 2, 2012 *
		Saint Petersburg State University	April 18, 2013 *
		Pacific National University	December 25, 2014 *
	Serbia	University of Belgrade	May 10, 2011 *
	Spain	University of Barcelona	November 5, 2014 *
		University of Lleida	March 13, 2015 *
	Sweden	KTH Royal Institute of Technology	January 20, 2010 *
		Umeå University	August 20, 2013 *
	Switzerland	University of Geneva	June 7, 2005 *
		Swiss Federal Institute of Technology Zurich (ETH Zurich)	June 13, 2007 *
	U.K.	University of Warwick	January 5, 2000 *
		University of Sheffield	October 5, 2010 *
		University of Edinburgh	February 23, 2011 *
		Newcastle University	March 1, 2013 *
		University of East Anglia	June 26, 2013 *
		University of Aberdeen	May 21, 2014 *
	Uzbekistan	University of World Economy and Diplomacy	October 2, 2015 *
North America	Canada	University of Alberta	August 13, 1997 *
		University of British Columbia	June 29, 2008 *
		Université de Montréal	June 29, 2015 *
	U.S.A.	Portland State University	December 19, 1972 *
		University of Massachusetts	September 14, 1976 *
		Cornell University	June 16, 1982 *
		University of Alaska	December 20, 1986 *
		University of Wisconsin-Madison	April 21, 1987 *
		Ohio State University	September 1, 1998 *
		University of Oregon	August 17, 2006 *
		University of California, Los Angeles	June 29, 2008 *
		University of Hawai'i at Manoa	June 30, 2003 *
		University of Hawai'i at Hilo	June 30, 2003 *
		University of Oklahoma	March 25, 2010 *
		University of Massachusetts Boston	June 25, 2015 *
		San Diego State University	October 15, 2015 *
		University of California, Davis	July 19, 2016 *
		Oregon State University	October 3, 2016 *
South America	Brazil	Universidade de São Paulo	April 1, 2009 *
		Universidade Federal do Rio Grande do Sul	November 8, 2013 *
Middle East	Saudi Arabia	King Abdulaziz University	July 8, 2010 *
Africa	Nigeria	University of Nigeria, Ebonyi State University	January 30, 2009 *
	South Africa	University of Johannesburg	June 29, 2008 *
		North-West University	February 5, 2014 *
		University of Pretoria	August 29, 2016 *
	Zambia	University of Zambia	March 18, 2011 *
		Copperbelt University	February 6, 2013 *

* indicates an Academic Exchange Agreement and Memorandum of Understanding on Student Exchange exist

2) Memoranda Based on Inter-University Agreements and Departmental Exchange Agreements (364 Memoranda and Agreements in 55 Countries/ Regions)

※ A= Academic exchange, S= Student exchange, D= Double degree program, C= Cotutelle program, I= Internship program
○ indicates a Memorandum Based on Inter-University Agreement

① Asia

Data as of November 1, 2016

Countries/ Regions	Counterparts		Hokkaido University	Contents (※)	Concluded
Bangladesh	Jahangirnagar University	Faculty of Mathematical and Physical Sciences	Faculty of Environmental Earth Science	A	2012. 1.26
Cambodia	Royal University of Agriculture		Research Faculty of Agriculture, Graduate School of Agriculture, School of Agriculture	A, S	2016. 7.18
	Institute of Technology of Cambodia		Faculty of Engineering, Graduate School of Engineering, School of Engineering, Graduate School of Information Science and Technology, Graduate School of Chemical Sciences and Engineering	A, S, I	2016.10.21
China	Fudan University	Institute of Mathematics	Graduate School of Science	A	2004. 1. 1 ○
	Peking University	University Library	Hokkaido University Library	Shared use	2005. 4. 1 ○
		Law School	Research Institute for Information Law & Policy	A	2010. 3.11 ○
	University of Science and Technology Beijing		Graduate School of Engineering	A	2005.11.24 ○
	Northeast Normal University	School of Mathematics and Statistics	Graduate School of Science	D	2011. 2.20 ○
	Southeast University	Department of Mathematics	Faculty of Science	A	2010. 8.15
		Department of Mathematics	Graduate School of Science	D	2011. 3. 9 ○
	Tsinghua University	Department of Material Science and Engineering, Department of Engineering Physics, Department of Chemical Engineering	Faculty of Engineering, Graduate School of Engineering, Graduate School of Chemical Sciences and Engineering	A	2012. 3.20 ○
	Beijing Normal University	Faculty of Education	Faculty of Education	A	2014.12.26 ○
	Xi'an Jiaotong University	School of Science	Graduate School of Engineering, School of Engineering	S	2015. 6.30 ○
		School of Science	School of Science	S	2015.10.15 ○
	Peking Union Medical College		School of Medicine	A	1994. 7.14
			School of Medicine	A	1985. 2.26
	Harbin Medical University	School of Stomatology	Graduate School of Dental Medicine	A	2000. 6. 5
		No. 4 Clinical Medicine College	Graduate School of Dental Medicine	A	2005. 9.21
	China Medical University	College of Stomatology	Graduate School of Dental Medicine	A	2001. 1.29
	Shenyang University of Technology		Faculty of Engineering	A	1985. 6.24
	Shanghai Jiao Tong University	School of Engineering	Graduate School of Engineering	A	1992.11.23
	Northeast Agricultural College		Faculty of Agriculture	A, S	1986. 6. 2
	Shenyang Agricultural University		Faculty of Agriculture	A, S	1986.11. 5
	Northeast Forestry University		Faculty of Agriculture	A	1986.12.31
	Jilin University	Law School	Graduate School of Law	A, S	1998.11.10
	Dalian Ocean University		Graduate School of Fisheries Sciences, Faculty of Fisheries Sciences, School of Fisheries Sciences	A, S	2000. 9.15
	Chinese Academy of Social Sciences	Institute of East European, Russian and Central Asian Studies	Slavic-Eurasian Research Center	A	1994. 9.13
		Institute of Journalism and Communication	Research Faculty of Media and Communication, Graduate School of International Media, Communication and Tourism Studies	A, S	2009. 2.19
	China University of Petroleum	School of Chemical Engineering	Institute for Catalysis	A	2001.12. 7
	East China Normal University	Department of Chemistry	Institute for Catalysis	A	2005. 3.18
	Xiamen University	State Key Laboratory of Physical Chemistry of Solid Surfaces	Institute for Catalysis	A	2007.10. 9
		Faculty of Earth Science and Technology	Graduate School of Environmental Science	C	2016. 6.23 ○
	Chinese Academy of Sciences	State Key Laboratory of Catalysis, Dalian Institute of Chemical Physics	Institute for Catalysis	A	2007.10.10
		Northeast Institute of Geography and Agroecology	Research Faculty of Agriculture, Graduate School of Agriculture and School of Agriculture	A, S	2012. 7. 3
	University of Hong Kong	Li Ka Shing Faculty of Medicine	Graduate School of Medicine, School of Medicine	A, S	2008. 1.30
	Harbin Engineering University	Engineering Faculty	Faculty of Engineering, Graduate School of Engineering, Graduate School of Chemical Sciences and Engineering	A, S	2008. 8.18
	East China University of Science and Technology	School of Law	Graduate School of Law, School of Law	A, S	2008. 7. 3
	Nanjing Normal University	School of Law	Graduate School of Law, School of Law	A, S	2009. 5.15
	Harbin Institute of Technology		Graduate School of Engineering	A, S	2009. 8.11
	Heilongjiang Provincial Academy of Social Sciences		Slavic-Eurasian Research Center	A	2010. 6.14
	Renmin University of China	Law School	Graduate School of Law, School of Law	A, S	2010.10. 1
		School of Education	Faculty of Education, Graduate School of Education	A, S	2013. 3.28
	Xi'an University of Architecture and Technology		Graduate School of Engineering	A, S	2010. 6.12
	Northeastern University		Faculty of Engineering, Graduate School of Engineering, School of Engineering	A, S	2011. 3. 9
	Forestry Research Science Institute of Heilongjiang Province		Field Science Center for Northern Biosphere	A	2011.10.19
	Sichuan Agricultural University		Research Faculty of Agriculture, Graduate School of Agriculture, School of Agriculture	A, S	2012. 6.18
	Yunnan Agricultural University		Research Faculty of Agriculture, Graduate School of Agriculture, School of Agriculture	A, S	2012. 7.26

Countries/ Regions	Counterparts		Hokkaido University	Contents (※)	Concluded
China	Fujian Academy of Agricultural Sciences		Research Faculty of Agriculture, Graduate School of Agriculture, School of Agriculture	A, S	2012.11.13
	South China University of Technology	College of Light Industry and Food Sciences	Faculty of Advanced Life Science, Graduate School of Life Science	A, S	2012.12.20
	Beijing Forestry University		Research Faculty of Agriculture, Graduate School of Agriculture, School of Agriculture	A, S	2013. 6. 5
	Southwest University	College of Resources and Environment	Research Faculty of Agriculture, Graduate School of Agriculture, School of Agriculture	A, S	2013.12.16
	Inner Mongolia Agricultural University	College of Agricultural	Research Faculty of Agriculture, Graduate School of Agriculture, School of Agriculture	A, S	2014. 1. 6
	Chongqing University	Faculty of Engineering	Faculty of Engineering, Graduate School of Engineering, School of Engineering	A, S	2014. 3. 7
	Wuhan University of Technology	School of Mechanical and Electrical Engineering School of Civil Engineering and Architecture	Faculty of Engineering, Graduate School of Engineering, School of Engineering	A, S	2014. 3.28
	Nanjing Agricultural University		Research Faculty of Agriculture, Graduate School of Agriculture, School of Agriculture	A, S	2014.12.30
	Huazhong Agricultural University		Research Faculty of Agriculture, Graduate School of Agriculture, School of Agriculture	A, S	2015. 9.22
	The Hong Kong University of Science and Technology	School of Science	Graduate School of Environmental Science, Faculty of Environmental Earth Science	A, S	2015.12.28
	Changchun University of Science and Technology	School of Law	Graduate School of Law	A, S	2016. 5. 4
	Shandong University	School of Stomatology	Graduate School of Dental Medicine	A	2016. 6.13
	Southwest University of Political Science and Law		Graduate School of Law, School of Law	A, S	2016. 9. 7
	Indian Institute of Technology Guwahati	Department of Biosciences and Bioengineering	Research Faculty of Agriculture, Graduate School of Agriculture, School of Agriculture	A, S	2015. 4.28
India	Indian Institute of Science Education and Research, Pune		Faculty of Science, Graduate School of Science, School of Science, Faculty of Advanced Life Science, Graduate School of Life Science, Graduate School of Chemical Sciences and Engineering	A, S	2016. 2.10
Indonesia	Bogor Agricultural University	Faculty of Veterinary Medicine	Research Center for Zoonosis Control	A	2010.10.14 ○
	Institute of Technology Bandung	Faculty of Civil Engineering and Planning	Graduate School of Engineering	A, S	2000. 8.11
	Sriwijaya University	Faculty of Agriculture	Research Faculty of Agriculture, Graduate School of Agriculture, School of Agriculture	A, S	2010. 9.23
	Islamic University of Indonesia	Faculty of Civil Engineering and Planning	Faculty of Environmental Earth Science	A	2008.12.11
	Padjadjaran University	Faculty of Geology	Hokkaido University Museum	A	2011. 2.24
	Indonesian Institute of Sciences	Research Center for Biology	Hokkaido University Museum	A	2011. 2.25
Korea	Diponegoro University Dr. Kariadi Hospital	Faculty of Medicine	Faculty of Health Sciences, Graduate School of Health Sciences	A, S	2012.12. 4
	Yeungnam University	College of Commerce and Economics	Graduate School of Economics and Business Administration	A	2001. 9.27 ○
	Chungbuk National University	College of Engineering	Faculty of Engineering, Graduate School of Engineering, School of Engineering	A, S	2007.12. 6 ○
	Seoul National University	Center for Space-Time Molecular Dynamics	Institute of Low Temperature Science	A	2009. 6.30 ○
		College of Engineering	School of Engineering, Graduate School of Engineering, Graduate School of Information Science and Technology	S	2011. 1.17 ○
		College of Engineering	School of Engineering, Graduate School of Engineering, Graduate School of Information Science and Technology	I	2011. 1.17 ○
		College of Engineering	Graduate School of Engineering, Graduate School of Information Science and Technology	D	2011. 7.31 ○
		College of Education	Faculty of Education	A	2014. 7.14 ○
		College of Pharmacy	Faculty of Pharmaceutical Sciences, School of Pharmaceutical Sciences and Pharmacy	A, S	2015. 7.17
		BK21Plus Center for Healthy Environment Education and Research School of Public Health	Center for Environmental and Health Sciences	A	2016. 6.29
	Yonsei University	College of Business and Economics	Graduate School of Economics and Business Administration	Joint seminar	2010.11.22 ○
	Korea University	College of Education, Graduate School of Education	Information Initiative Center	A	2009. 7.23
		College of Education	School of Education	A	2011.10.31 ○
	Pukyong National University	College of Fisheries Science	Graduate School of Fisheries Sciences, School of Fisheries Sciences	S	2011.12.26 ○
	Kongju National University	College of Education	Graduate School of Education	S	2012. 2. 7 ○
	Dong-Eui University	College of Engineering	Faculty of Engineering, Graduate School of Engineering	A	2014.12.10 ○
	Chonnam National University	Collage of Agriculture and Life Sciences	Research Faculty of Agriculture, Graduate School of Agriculture, School of Agriculture	A, S	2002. 1.24
		College of Fisheries and Ocean Science	Graduate School of Fisheries Sciences Faculty of Fisheries Sciences, School of Fisheries Sciences	A, S	2007. 8.27

Countries/ Regions	Counterparts		Hokkaido University	Contents (※)	Concluded
Korea	Kyungpook National University	College of Veterinary Medicine	Graduate School of Veterinary Medicine, School of Veterinary Medicine	A	2000.12.19
		School of Medicine	Graduate School of Medicine, School of Medicine	A, S	2016.9.27
	Cheju National University	College of Ocean Science	Graduate School of Fisheries Sciences Faculty of Fisheries Sciences, School of Fisheries Sciences	A, S	2002.12.17
	Gyeongsang National University	College of Marine Science	Graduate School of Fisheries Sciences Faculty of Fisheries Sciences, School of Fisheries Sciences	A, S	2003.12.15
		School of Medicine, College of Medicine	Graduate School of Medicine, School of Medicine	A, S	2015. 7. 6
	Kyung Hee University	College of Life Sciences	Field Science Center for Northern Biosphere	A	2004. 2.25
		Law School	Graduate School of Law	A	2011. 3.29
	Kunsan National University	College of Ocean Science and Technology	Graduate School of Fisheries Sciences Faculty of Fisheries Sciences, School of Fisheries Sciences	A, S	2005. 8.29
	Gangneung-Wonju National University	College of Life Science	Graduate School of Fisheries Sciences Faculty of Fisheries Sciences, School of Fisheries Sciences	A, S	2007. 7. 1
		College of Dentistry	Graduate School of Dental Medicine	A	2015. 4.20
	Seoul Women's University	College of Natural Sciences	Research Faculty of Agriculture, Graduate School of Agriculture, School of Agriculture	A, S	2010. 6.11
	Incheon National University	College of Engineering College of Urban Sciences	Faculty of Engineering, Graduate School of Engineering	A	2011. 5.26
	Hansung University	College of Arts	Information Initiative Center	A	2011. 7.29
	Hanyang University	College of Engineering Science	Faculty of Engineering, Graduate School of Engineering, School of Engineering	A, S	2011. 9.19
	National Institute of Biological Resources		Hokkaido University Museum	A	2012. 2. 9
	Korea Advanced Institute of Science and Technology	College of Natural Sciences	Faculty of Science, Graduate School of Science, School of Science	A, S	2015. 3.16
	Chonbuk National University	School of Dentistry	Graduate School of Dental Medicine	A	1990.11.22
	Chungnam National University	College of Pharmacy	Faculty of Pharmaceutical Sciences, School of Pharmaceutical Sciences and Pharmacy	A, S	2016. 2. 2
	Pohang University of Science and Technology		Faculty of Engineering, Graduate School of Engineering, School of Engineering, Graduate School of Information Science and Technology, Graduate School of Chemical Sciences and Engineering	A, S	2016. 6. 8
	Pusan National University	College of Natural Science	Faculty of Science, Graduate School of Science, School of Science, Faculty of Advanced Life Science, Graduate School of Life Science, Graduate School of Chemical Sciences and Engineering	A, S	2016. 6.15
		College of Engineering	Faculty of Engineering, Graduate School of Engineering, School of Engineering	A, S	2016.8.4
	Chung-ang University	Department of Sociology	Graduate School of Public Policy	A	2015.10. 7
Malaysia	Universiti Sains Malaysia	School of Materials and Mineral Resources Engineering	Faculty of Engineering, Graduate School of Engineering, School of Engineering	I	2014.12.30
	International Islamic University Malaysia	Faculty of Engineering	Faculty of Engineering, Graduate School of Engineering, School of Engineering Graduate School of Information Science and Technology, Graduate School of Chemical Sciences and Engineering	A, S	2012.11.12
	Universiti Malaysia Sabah	Institute for Tropical Biology and Conservation	Faculty of Environmental Earth Science, Graduate School of Environmental Science	A, S	2014. 2. 5
	Tropical Peat Research Laboratory Unit		Research Faculty of Agriculture, Graduate School of Agriculture, School of Agriculture	A, S	2016. 3. 8
Mongolia	Mongolian Academy of Sciences	Institute of Geography	Faculty of Environmental Earth Science, and Research Faculty of Agriculture	A	2009. 2.18
		Palaeontological Centre	Hokkaido University Museum	A	2011. 8.15
	Institute of Meteorology and Hydrology, Ministry of Nature and Environment		Faculty of Environmental Earth Science, Research Faculty of Agriculture	A	2009. 2.12
	National University of Mongolia	School of Art and Sciences, School of Applied Sciences and Engineering	Faculty of Environmental Earth Science, Research Faculty of Agriculture	A	2009. 2.18
		Nuclear Research Center	Faculty of Science	A	2010. 9.21
Myanmar	National Center for Zoonotic Diseases, Ministry of Health		Graduate School of Veterinary Medicine	A	2014. 1.17
	Ministry of Health	Department of Medical Research	Research Center for Zoonosis Control	A	2013. 6.10
Nepal	University of Veterinary Science		Graduate School of Veterinary Medicine	A	2013.10. 7
	National Trust for Nature Conservation Nepal Anti-Tuberculosis Association/ German — Nepal Anti-Tuberculosis Project		Graduate School of Veterinary Medicine, Research Center for Zoonosis Control	A	2016. 4.11
Philippines	Philippine Carabao Center		Research Center for Zoonosis Control	A	2009.12. 5
			Graduate School of Veterinary Medicine	A	2015. 9.29
	University of the Philippines Diliman	College of Engineering	Graduate School of Information Science and Technology	A, S	2010. 4.28
	International Rice Research Institute		Research Faculty of Agriculture, Graduate School of Agriculture, School of Agriculture	A	2015. 3.10

Countries/ Regions	Counterparts		Hokkaido University	Contents (※)	Concluded
Philippines	Central Mindanao University	College of Engineering	Faculty of Engineering, Graduate School of Engineering, School of Engineering, Graduate School of Information Science and Technology	A, S	2016. 9.20
Singapore	National University of Singapore	Faculty of Arts and Social Sciences	Graduate School of Letters	A, S	2006. 8. 8
		Faculty of Science	Faculty of Fisheries Sciences	A	2014. 3.24
		Yong Loo Lin School of Medicine	School of Medicine	S	2015. 5.22
Taiwan	Academia Sinica	Institute of Sociology	Graduate School of Letters	A	2013. 4. 2 ○
		Research Center for Applied Sciences	Research Institute for Electronic Science	A	2014.12.22 ○
		Institute of Physics	Research Institute for Electronic Science	A	2015. 3.23 ○
	National Chung Hsing University	College of Veterinary Medicine	Research Center for Zoonosis Control	A	2014. 9.29 ○
	National Taiwan University	College of Social Science	Graduate School of Law, School of Law	A, S	2000. 1.28
		College of Law	Graduate School of Law, School of Law	A, S	2000.10.20
		National Taiwan University Hospital	Hokkaido University Hospital	A	2014. 2.12 ○
		College of Engineering	Graduate School of Chemical Sciences and Engineering, Graduate School of Environmental Science, Graduate School of Science, Graduate School of Life Science, Graduate School of Engineering	S	2014. 3. 6 ○
		College of Social Sciences	Graduate School of Economics and Business Administration, School of Economics and Business Administration	A, S	2014.12.22 ○
		College of Medicine	Graduate School of Medicine, School of Medicine	A, S	2016. 9.12
		College of Engineering	Graduate School of Chemical Sciences and Engineering	D	2016.10.20 ○
		College of Engineering	Graduate School of Chemical Sciences and Engineering	C	2016.10.20 ○
	National Chengchi University	College of Law	Graduate School of Law, School of Law, Graduate School of Public Policy, Faculty of Public Policy	A, S	2005. 7.28
		College of Social Sciences	Graduate School of Public Policy, Faculty of Public Policy	A, S	2005. 7.28
		College of International Affairs	Graduate School of Public Policy, Faculty of Public Policy	A, S	2005. 7.28
		Center for Aboriginal Studies	Center for Ainu & Indigenous Studies	A	2007.10.18
	National Taiwan Normal University	College of Liberal Arts	Graduate School of Letters	A	2014. 3.17
		Institute of Optoelectronics Science and Technology	Research Institute for Electronic Science	A	2008. 1.28
		Science Education Center	Faculty of Education	A	2012. 3. 1
	National Taiwan Ocean University	College of Life Sciences	Graduate School of Fisheries Sciences, Faculty of Fisheries Sciences, School of Fisheries Sciences	A, S	2008. 8.20
	National University of Kaohsiung	College of Law	Graduate School of Law	A	2008. 3.11
		College of Humanities and Social Sciences	Graduate School of Letters	A, S	2016. 5.31
	National Cheng Kung University	College of Sciences	Faculty of Science	A	2011.10. 4
	National Chiao Tung University	College of Science	Research Institute for Electronic Science	A	2011. 1.24
	National Taipei University	Department of Public Administration and Policy	Faculty of Public Policy	A	2011. 9.27
	National Dong Hwa University	College of Environmental Studies	Faculty of Environmental Earth Science, Graduate School of Environmental Science	A, S	2012. 6.25
		College of Marine Sciences	Hokkaido University Museum	A	2014. 7.29
	Taipei Medical University	College of Medicine	Graduate School of Medicine, School of Medicine	A, S	2012.12.21
		College of Nursing	Graduate School of Medicine, School of Medicine	A, S	2012.12.21
		College of Public Health and Nutrition	Faculty of Health Sciences, Graduate School of Health Sciences	A, S	2012.12.21
		College of Medical Science and Technology	Faculty of Health Sciences, Graduate School of Health Sciences	A, S	2012.12.21
	Fu Jen Catholic University	Shuang Ho Hospital	Hokkaido University Hospital	A	2014. 7.14
		College of Pharmacy	Faculty of Pharmaceutical Sciences, School of Pharmaceutical Sciences and Pharmacy	A, S	2014.11.27
	Fu Jen Catholic University	College of Foreign Languages	Graduate School of Letters	A	2014. 2.25
		College of Foreign Languages	Hokkaido University Hospital	A	2015.10.31
	National Museum of Marine Biology & Aquarium		Hokkaido University Museum	A	2014. 7.29
	Judges Academy Taiwan		Graduate School of Law	A	2014. 9.26
	National Quemoy University	College of Social Sciences	Faculty of Public Policy	A	2015. 3.11
	Kaohsiung Medical University	College of Health Sciences	Faculty of Health Sciences, Graduate School of Health Sciences	A, S	2015. 6.10
	National Changhua University of Education	College of Social Sciences and Physical Education	Graduate School of Public Policy	A	2015. 11. 5
	China Medical University	School of Medicine	Graduate School of Medicine, School of Medicine	A, S	2016. 9.26
Thailand	Mahidol University	Faculty of Public Health	Research Center for Zoonosis Control	A	2008.11.26 ○
		Faculty of Veterinary Science	Research Center for Zoonosis Control	A	2012. 2.22 ○
		Faculty of Medicine Siriraj Hospital	Research Center for Zoonosis Control	A	2012. 2.22 ○
		School of Engineering and Technology	Graduate School of Engineering	D	2011. 3.17 ○
	Asian Institute of Technology	School of Environment, Resources and Development	Faculty of Fisheries Sciences	Joint education	2011. 6.29 ○
	Chulalongkorn University	Faculty of Engineering	Faculty and Graduate School of Engineering, School of Engineering, Graduate School of Information Science and Technology, Graduate School of Chemical Sciences and Engineering	I	2011. 9. 5 ○

① Asia

Data as of November 1, 2016

Countries/ Regions	Counterparts		Hokkaido University	Contents (※)	Concluded
Thailand	Chulalongkorn University	Faculty of Education	Faculty of Education	A	2014. 5.12 ○
		Faculty of Medicine	Faculty of Health Sciences, Graduate School of Health Sciences	A, S	2015. 6. 3
	Kasetsart University	Faculty of Engineering	Faculty of Engineering, Graduate School of Engineering, School of Engineering, Graduate School of Information Science and Technology, Graduate School of Chemical Sciences and Engineering	I	2014. 2.21 ○
			Research Center for Zoonosis Control	A	2015. 1.20 ○
	Thammasat University	Sirindhorn International Institute of Technology	Faculty of Engineering, Graduate School of Engineering	A, S	2007. 5.15
	Khon Kaen University	Faculty of Humanities and Social Sciences	Graduate School of Letters	A, S	2004.11.30
	Southeast Asian Fisheries Development Center		Graduate School of Fisheries Sciences, Faculty of Fisheries Sciences, School of Fisheries Sciences	A	2006. 2.18
	National Telecommunications Commission		Graduate School of Information Science and Technology	A	2007. 7. 1
	Agricultural Research Development Agency		Research Faculty of Agriculture, Graduate School of Agriculture	A	2009. 3.24
	Walailak University		Faculty of Fisheries Sciences	A	2009.12.12
	Department of Fisheries		Faculty of Fisheries Sciences	A	2016. 4. 6
	National Science Museum		Hokkaido University Museum	A	2012.9.19
Vietnam	National Institute of Hygiene and Epidemiology		Research Center for Zoonosis Control	A	2014.12.25
	Institute of Mathematics, Vietnam Academy of Science and Technology		Faculty of Science, Graduate School of Science	A, S, D	2015. 3.17
	Ho Chi Minh City University of Technology	Faculty of Geology and Petroleum Engineering, Faculty of Civil Engineering	Faculty of Engineering, Graduate School of Engineering, School of Engineering	I	2015. 4.28 ○
			Graduate School of Information Science and Technology, Graduate School of Chemical Sciences and Engineering		
	Can Tho University	College of Aquaculture and Fisheries	Faculty of Fisheries Sciences	A, S	2016. 6. 2 ○

② Oceania

Data as of November 1, 2016

Countries/ Regions	Counterparts		Hokkaido University	Contents (※)	Concluded
Australia	University of Sydney	Faculty of Agriculture and Environment	Graduate School of Agriculture	C	2016.8.23 ○
			Graduate School of Engineering, Graduate School of Information Science and Technology, Graduate School of Chemical Sciences and Engineering	A, I	2012. 8. 6
	University of Melbourne	Department of Microbiology and Immunology	Research Center for Zoonosis Control	A	2014. 7.29
		Faculty of Arts	Graduate School of Letters, Faculty of Letters	A, S	2015.12.21
	Curtin University		Faculty of Engineering, Graduate School of Engineering, School of Engineering	A, S	2014. 8.29
	University of Western Sydney		Research Faculty of Agriculture, Graduate School of Agriculture, School of Agriculture	A	2014.10. 7
	University of Technology Sydney		Faculty of Engineering, Graduate School of Engineering, School of Engineering, Graduate School of Information Science and Technology	A, S	2016. 5.25
New Zealand	Lincoln University		Research Faculty of Agriculture, Graduate School of Agriculture, School of Agriculture	A, S	2014. 8. 6
	Victoria University of Wellington	School of History, Philosophy, Political Science and International Relations	Graduate School of Public Policy	A, S	2016.10. 1

③ Europe

Date as of November 1, 2016

Countries/ Regions	Counterparts		Hokkaido University	Contents (※)	Concluded
Belgium	Katholieke Universiteit Leuven	Faculty of Science	Research Institute for Electronic Science	A	2013. 7.20
		Faculty of Arts	Graduate School of Law	S	2015. 7. 9
Bulgaria	Trakia University	Faculty of Agriculture	Faculty of Science, Graduate School of Science, School of Science	A, S	2014. 3.19
	National Museum of Natural History, Bulgarian Academy of Sciences		Faculty of Sciences	A	2015. 9.17
Croatia	University of Zagreb	Faculty of Humanities and Social Sciences	Graduate School of Letters	A, S	2009. 2.18
Czech	Charles University in Prague	First Faculty of Medicine	Graduate School of Medicine, School of Medicine	A	2008. 9. 8
	University of South Bohemia	Faculty of Fisheries and Protection of Waters	Graduate School of Fisheries Sciences, Faculty of Fisheries Sciences, School of Fisheries Sciences	A, S	2010. 6.29
	Czech Technical University in Prague	Faculty of Civil Engineering	Faculty of Engineering, Graduate School of Engineering, School of Engineering	A, S	2015.12.21
Denmark	Aarhus University	Department of Dentistry	Graduate School of Dental Medicine	A	2012.11.12
		Department of Dentistry, Graduate School of Health	Graduate School of Dental Medicine	D	2014. 3. 7
	Royal Danish Academy of Fine Arts	School of Architecture	Graduate School of Engineering	A, S	2010. 3.31
	University of Copenhagen	Niels Bohr Institute	Institute of Low Temperature Science	A	2012. 1.25
Finland	Tampere University of Applied Sciences		Faculty of Engineering, Graduate School of Engineering, Graduate School of Chemical Sciences and Engineering	A, S, I	2011. 1.12
	Tampere University of Technology	Faculty of Computing and Electrical Engineering	Faculty of Engineering, Graduate School of Engineering, School of Engineering, Graduate School of Information Science and Technology	A, S	2016. 6.29
France	University of Poitiers	Faculty of Law	School of Law	A	1993.10.15
	National Institute of Oriental Languages and Civilizations	Center of Russians and Eurasians Studies	Slavic-Eurasian Research Center	A	1983. 9.25
	Ecole Pratique des Hautes Etudes		Graduate School of Letters	A	2005. 6.30
	Ecole Normale Supérieure de Lyon		Research Institute for Electronic Science	A	2010. 3.26
	Musée Zoologique de la ville de Strasbourg		Hokkaido University Museum	A	2009.11.20
	Ecole Nationale Supérieure de Mécanique et D'Aérotechnique		Faculty of Engineering, Graduate School of Engineering	A, I	2011. 1.18
	Université Lille 1 et Ecole Centrale de Lille	Unité de Catalyse et de Chimie du Solide	Institute for Catalysis	A	2011. 1.17
	Ecole Supérieure des Technologies Industrielles Avancées		Graduate School of Information Science and Technology, Faculty of Engineering, Graduate School of Engineering	A, S	2011.10.11
	Centre National de Recherches Météorologiques		Institute of Low Temperature Science	A	2012. 3.26
	Université Paris Diderot		Graduate School of Letters, Faculty of Letters	A, S	2014.12.18
	Paul Sabatier University	Géosciences Environment Toulouse	Faculty of Science, Graduate School of Science	A, S	2016. 2. 3
Germany	Ludwig-Maximilians-Universität München	Faculty of Veterinary Medicine	Graduate School of Veterinary Medicine	A, S	2011. 1.10
	Max Planck Institutes	Fritz-Haber Institute of the Max Planck Society	Institute for Catalysis	A	2005.12.26
		Max-Planck Institute for Marine Microbiology	Institute of Low Temperature Science	A	2009. 3. 4
		Max-Planck Institute for Terrestrial Microbiology	Institute of Low Temperature Science	A	2012. 1.19
	Alfred Wegener Institute for Polar and Marine Research		Institute of Low Temperature Science	A	2009. 3. 3
	Otto-von-Guericke-Universität Magdeburg	Faculty of Natural Science	Research Institute for Electronic Science	A	2010. 9.13
	Senckenberg Forschungsinstitute und Naturmuseen		Hokkaido University Museum	A	2009.11.18
	GEOMAR Helmholtz Centre for Ocean Research Kiel		Faculty of Environmental Earth Science, Graduate School of Environmental Science	A, S	2012. 5.31
	Free University of Berlin	Faculty of Veterinary Medicine	Graduate School of Veterinary Medicine	A	2012. 7.25
	Technische Universität Berlin	School of Process Sciences	Faculty of Engineering, Graduate School of Engineering, School of Engineering	A, S	2013.12. 3
		School of Electrical Engineering and Computer Science			
	Christian-Albrechts-Universität zu Kiel	School of Mechanical Engineering and Transport Systems			
		Faculty of Mathematics and Natural Sciences	Faculty of Science, Graduate School of Science	A, S	2014. 3. 5
	Universität Hamburg	Faculty of Mathematics, Informatics and Natural Sciences	Graduate School of Chemical Sciences and Engineering, Faculty of Engineering, Graduate School of Engineering, School of Engineering, Graduate School of Information Science and Technology	A, S	2014. 3.21
	Technische Fachhochschule Georg Agricola zu Bochum		Faculty of Engineering, Graduate School of Engineering, School of Engineering	A, S	2015. 4.30
	University of Duisburg-Essen	Institute of East Asian Studies	Graduate School of Letters	A, S	2016. 1.26

③ Europe

Data as of November 1, 2016

Countries/ Regions	Counterparts		Hokkaido University	Contents (※)	Concluded
Hungary	Szent István University	Faculty of Agricultural Economics and Social Sciences Faculty of Agricultural and Environmental Management	Graduate School of Agriculture	A, S	2003. 2. 5
Iceland	University of Iceland		Graduate School of Medicine, School of Medicine	A	2015. 6.23
Ireland	University College Dublin	Center for Research in Infectious Diseases	Research Center for Zoonosis Control	A	2014.12.25
		Center for Research in Infectious Diseases	Research Center for Zoonosis Control	A	2016. 6.29
	Dublin Institute of Technology		Faculty of Engineering, School of Engineering, Graduate School of Engineering	A	2015. 3.23
Italy	University of Pisa	Department of Mathematics	Faculty of Science, Graduate School of Science, School of Science	A, S	2015. 6. 9
		Department of Agriculture, Food and Environment	School of Science, Graduate School of Life Science, Faculty of Science	A, S	2015. 9.29
		Department of Biology	School of Science, Graduate School of Life Science, Faculty of Science	A, S	2016. 8.24
	Scuola Superiore Sant'Anna	Institute of Economics, Institute of Life Sciences	Faculty of Science, Graduate School of Science, School of Science, Graduate School of Life Science	A, S	2015. 8. 7
	Scuola Normale Superiore		Faculty of Science, Graduate School of Science	A, S	2015. 8. 4
Kazakhstan	Al-Farabi Kazakh National University	Physico-Technical Faculty	Graduate School of Science	D	2012. 2.29
	Kazakh National Pedagogical University	Institute of Magistracy & PhD Education	Faculty of Science	A	2009.11.19
Lithuania	Aleksandras Stulginskis University		Research Faculty of Agriculture, Graduate School of Agriculture, School of Agriculture	A, S	2015. 9.18
Netherlands	Leiden University	Institute of East European Law and Russian Studies	Slavic-Eurasian Research Center	A	1994. 1.17
Norway	University of Tromsø	Centre for Sami Studies	Center for Ainu & Indigenous Studies	A	2010. 8. 5
	Telemark University College	Department of Environmental and Health Studies	Institute of Low Temperature Science	A	2014.12.22
	University of Oslo	Department of Geosciences	Faculty of Environmental Earth Science, Graduate School of Environmental Science	A	2015. 2.16
Portuguese	University of Algarve	Faculty of Sciences and Technology	Faculty of Science, Graduate School of Science, School of Science	A, S	2015. 3.24
Poland	AGH University of Science and Technology		Graduate School of Engineering	D	2010. 7. 6
			Graduate School of Chemical Sciences and Engineering	D	2011.11.22
	Warsaw School of Economics		Graduate School of Economics, School of Economics	A, S	1989. 3.14
	Technical University of Lodz	Faculty of Textile Engineering	School of Science	A	1992. 3.19
	Polish Academy of Sciences	Institute of Mathematics	Graduate School of Science	A	2003. 9.26
		Jerzy Haber Institute of Catalysis and Surface Chemistry	Institute for Catalysis	A	2010. 3.15
	Polish Academy of Sciences in Olsztyn	Institute of Animal Reproduction and Food Research	Faculty of Fisheries Sciences	A	2016. 3. 4
	West Pomeranian University of Technology	Institute of Chemical and Environmental Engineering	Institute for Catalysis	A	2010. 3.17
	Gdansk University of Technology		Institute for Catalysis	A	2010. 3.18
	University of Gdansk		Institute for Catalysis	A	2013. 2. 1
			Faculty of Fisheries Sciences	A	2016. 6.29
	University of Warmia and Mazury		Faculty of Fisheries Sciences	A	2015.11. 9
	Jagiellonian University in Kraków	Faculty of Chemistry	Institute for Catalysis	A	2016. 5.11
Russia	Russian Academy of Sciences	Institute of Oriental Studies	Slavic-Eurasian Research Center	A	2005.10.17
		Institute of Slavic Studies	Slavic-Eurasian Research Center	A	2006. 6. 6
		Institute of Russian Literature	Slavic-Eurasian Research Center	A	2011. 4.14
	Siberian Branch of Russian Academy of Sciences	Institute of Economics and Industrial Engineering	School of Economics and Business Administration	A	1990. 7.30
		United Institute of Geology, Geophysics and Mineralogy	School of Science	A	1992. 3.10
		V.N. Sukachev Institute of Forest	Field Science Center for Northern Biosphere	A	2005. 3.12
		Institute for Biological Problems of Cryolithozone	Faculty of Environmental Earth Science, Research Faculty of Agriculture	A	2008.12. 2
		Institute for Biological Problems of Cryolithozone	Graduate School of Letters	A	2014.11.27
		Melnikov Permafrost Institute	Faculty of Environmental Earth Science	A	2010. 2. 1
		Institute for Humanities Research and Indigenous Studies of the North	Faculty of Environmental Earth Science	A	2010. 2. 1
		Institute for Humanities Research and Indigenous Studies of the North	Graduate School of Letters	A	2016. 2. 8
	Far Eastern Branch of Russian Academy of Sciences	Far Eastern Geological Institute	Faculty of Environmental Earth Science	A	2008.11.27
		N.A. Shilo North-East Interdisciplinary Scientific Research Institute	Hokkaido University Museum	A	2010. 8. 1
		N.A. Shilo North-East Interdisciplinary Scientific Research Institute	Graduate School of Letters	A	2015. 7.24
		Institute of Biology and Soil Science	Faculty of Science	A	2013.10.14
		Pacific Geographical Institute	Institute of Low Temperature Science	A	2014. 3. 7

③ Europe

Data as of November 1, 2016

Countries/ Regions	Counterparts		Hokkaido University	Contents (※)	Concluded	
Russia	Moscow State Pedagogical University		School of Education	A	1995. 8. 3	
	Novosibirsk State University		School of Science	A	1993. 6. 18	
	Sakhalin State Regional Museum		Hokkaido University Museum	A	2000. 8. 1	
			Graduate School of Letters	A	2016. 3. 11	
	Kazan State Power Engineering University	Institute of Economics and Social Technologies	Slavic-Eurasian Research Center	A	2005. 1. 28	
	North-Eastern Federal University		Faculty of Environmental Earth Science	A	2008.12. 3	
	State Museum of Khabarovsk, named in honor of N. I. Grodekov		Hokkaido University Museum	A	2010. 4. 1	
	Nikolaevsk na Amure Municipal Museum		Hokkaido University Museum	A	2010. 4. 1	
	Primorie State Museum, named in honor of V. K. Arseniev		Hokkaido University Museum	A	2010. 4. 1	
	Kamchatka State Technical University		Hokkaido University Museum	A	2010. 8. 20	
	Tyumen State Oil and Gas University	Tyumen Science Center	Faculty of Environmental Earth Science	A	2010.11.22	
	Siberian Branch of Russian Academy of Sciences					
	Irkutsk State Technical University		Hokkaido University Museum	A	2011. 6. 1	
	Kalmyk State University		Slavic-Eurasian Research Center	A	2012. 7. 30	
	Far Eastern Regional Hydrometeorological Research Institute		Institute of Low Temperature Science	A	2013. 3. 27	
	Kamchatka Regional Unifield Musuem		Graduate School of Letters	A	2015. 6. 5	
	Tachkent Branch of G.V.Plekhanov Russian University of Economics		Graduate School of Economics and Business Administration	A	2015.12. 1	
Spain	Sakhalin State University	Institute of Education and Psychology	Faculty of Education	A	2016. 3. 2	
	Far Eastern State Medical University		Hokkaido University Hospital	A	2014.10.20	
	Polytechnic University of Valencia	School of Architecture School of Civil Engineering	Graduate School of Engineering	A, S	2006. 1. 9	
	Agencia Estatal Consejo Superior de Investigaciones Cientificas		Institute of Low Temperature Science	A	2016. 1. 19	
	University of Barcelona		Graduate School of Medicine, School of Medicine	A, S	2016. 2. 2	
	Hospital Clinic of Barcelona		Hokkaido University Hospital	A	2016. 9. 8	
	University of Murcia	Faculty of Veterinary Medicine	Graduate School of Veterinary Medicine	A	2016. 5. 2	
	Sweden	University of Gothenburg	School of Business, Economics and Law	Graduate School of Economics and Business Administration, School of Economics and Business Administration	A, S, D	1996.10.28
		Linköping University	Institute of Technology	Graduate School of Engineering	A, S	2000. 8. 24
		Karolinska Institute	Department of Dental Medicine	Graduate School of Dental Medicine	A	2015. 8. 25
Stockholm University		Faculty of Science	Institute of Low Temperature Science	A	2010. 9. 20	
Switzerland	University of Applied Sciences of Western Switzerland		Graduate School and School of Engineering, Graduate School of Information Science and Technology, Graduate School of Chemical Sciences and Engineering	A, S	2016. 3. 8	
Ukraine	Bogolyubov Institute for Theoretical Physics		Faculty of Science	A	2002. 3. 30	
U.K.	University of Oxford	Russian and Eurasian Studies Center, St. Antony's College	Slavic-Eurasian Research Center	A	2004. 3. 12	
		Oxford Centre for Asian Archaeology, Art and Culture	Center for Ainu & Indigenous Studies	A	2013.10.18	
	University of Leeds	Faculty of Education, Social Science and Law	Graduate School of Education	A	2006.12.11	
	University of Edinburgh	Royal (Dick) School of Veterinary Studies	Graduate School of Veterinary Medicine	A, S	2009. 7. 24	
	University of Manchester	Faculty of Humanities	Graduate School of Letters	A, S	2009.12. 9	
	Cardiff University	Cardiff Catalysis Institute	Institute for Catalysis	A	2010. 1. 26	
	University of Glasgow	College of Science and Engineering	Research Institute for Electronic Science	A	2013.11.20	
	University of London	School of Oriental and African Studies	Graduate School of Letters	A, S	2015. 1. 26	
		MRC-Laboratory for Molecular Cell Biology, University College London	Insititue for Genetic Medicine	A	2015. 7. 8	
	University of Sussex		Graduate School of Letters	A, S	2015. 3. 31	

④ North America & South America

Data as of November 1, 2016

Countries/ Regions	Counterparts		Hokkaido University	Contents (※)	Concluded
Canada	University of British Columbia	Fisheries Centre	Graduate School of Fisheries Science	S	2011. 3. 1
	Université de Montréal	Faculté de médecine	Graduate School of Chemical Sciences and Engineering	D	2016. 4. 15
	McMaster University	Michael G. DeGroote School of Business	Graduate School of Economics and Business Administration	A, S	2001.10.15
	Simon Fraser University		Faculty of Science	A	2008. 5. 10
U.S.A.	University of Alaska Fairbanks	School of Fisheries and Ocean Sciences	School of Fisheries Sciences	A	1986.9.12
	University of Alaska	The Museum of the North	Hokkaido University Museum	A	2005.11. 1
	Portland State University	School of Education	School of Education	A	1989.12.12
	Cornell University	College of Veterinary Medicine	Graduate School of Veterinary Medicine	I	2013. 3. 25
	University of Massachusetts Amherst	Library	Hokkaido University Library	Library exchange	2014. 8. 4
	University of Massachusetts Medical School	Graduate School of Biomedical Sciences	Faculty of Advanced Life Science, Graduate School of Life Science	A, S	2011. 5. 10

④ North America & South America

Data as of November 1, 2016

Countries/ Regions	Counterparts		Hokkaido University	Contents (※)	Concluded
U.S.A.	University of Wisconsin	Law School	School of Law	A	1999. 6. 1
	Oregon Health and Sciences University	Dental School	School of Dental Medicine	A	1974. 1. 1
	University of Washington	College of the Environment	School of Fisheries Sciences	A	1988. 6.24
	University of Maryland	Center of Marine Biotechnology, Maryland Biotechnology Institute	School of Fisheries Sciences	A	1989.12.23
	University of Illinois at Chicago		Graduate School of Environmental Earth Science	A	1993. 7.14
			Graduate School and School of Medicine	A	2016. 2.15
	Harvard University	Davis Center for Russian and Eurasian Studies	Slavic-Eurasian Research Center	A	1992.11. 4
	University of Delaware	Center for Catalytic Science and Technology	Institute for Catalysis	A	2007. 7. 9
	University of California, Los Angeles	California NanoSystems Institute	Research Institute for Electronic Science	A	2008. 6.10
	University of California, San Diego	Scripps Institute of Oceanography	Faculty of Environmental Earth Science, Graduate School of Environmental Science, Faculty of Science, Graduate School of Science, Institute of Low Temperature Science	A	2016.3.17
	University of California, Davis	College of Agricultural and Environmental Sciences	Research Faculty of Agriculture, Graduate School of Agriculture, Faculty of Health Sciences, Graduate School of Health Sciences	A, S	2016.6.2
	Iowa State University	Institute for Physical Research and Technology	Institute for Catalysis	A	2009. 3.10
	Perot Museum of Nature & Science		Hokkaido University Museum	A	2011. 8.23
	Rice University	George R. Brown School of Engineering	Faculty of Engineering, Graduate School of Engineering, School of Engineering, Graduate School of Information Science and Technology, Graduate School of Chemical Sciences and Engineering	A, I	2011.10.19
	University of Utah	Graduate School Nano Institute of Utah	Faculty of Environmental Earth Science, Graduate School of Environmental Science	A	2013. 1.22
	Purdue University	College of Science	Institute for Catalysis	A	2014. 4.26
	The University of Arizona	College of Humanities	Graduate School of Letters	A, S	2015. 4. 7
	University of Tulsa		Faculty of Engineering, Graduate School of Engineering, School of Engineering, Graduate School of Information Science and Technology, Graduate School of Chemical Sciences and Engineering	A, I	2014.12. 1
Brazil	Federal University of Viçosa		Research Faculty of Agriculture, Graduate School of Agriculture, School of Agriculture	A, S	2001. 5.10
	Oswaldo Cruz Foundation		Research Center for Zoonosis Control	A	2016. 6.29
Colombia	Universidad de Antioquia	Faculty of Engineering	Faculty of Engineering, Graduate School of Engineering, School of Engineering, Graduate School of Information Science and Technology, Graduate School of Chemical Sciences and Engineering	A, S, I	2016.9.7
Mexico	Instituto Tecnológico y de Estudios Superiores de Monterrey		Faculty of Engineering, Graduate School of Engineering	A, S	2010. 7.20

⑤ Middle East & Africa

Data as of November 1, 2016

Countries/ Regions	Counterparts		Hokkaido University	Contents (※)	Concluded
Saudi Arabia	King Abdullah University of Science and Technology		Research Center for Zoonosis Control	A	2014.12.16
Turkey	Izmir University	Faculty of Medicine	School of Medicine	A, S	2011.10.24
Burkina Faso	International Institute for Water and Environmental Engineering		Graduate School of Engineering	A, S	2010. 1.26
Egypt	Zagazig University	Faculty of Veterinary Medicine	Graduate School of Veterinary Medicine	A	2012. 3. 6
Ghana	Kwame Nkrumah University of Science and Technology	College of Science	Graduate School of Veterinary Medicine	A	2013. 7.26
Sudan	University of Khartoum		Research Center for Zoonosis Control	A	2016.10.18
Zambia	University of Zambia	Samora Machel School of Veterinary Medicine	Graduate School of Veterinary Medicine, School of Veterinary Medicine	A	1991.12. 5
		Samora Machel School of Veterinary Medicine	Research Center for Zoonosis Control	A	2011. 2. 6
Zimbabwe	University of Zimbabwe	Faculty of Veterinary Science	Research Center for Zoonosis Control	A	2013. 5.29
	Ministry of Agriculture, Mechanization and Irrigation	Division of Veterinary Technical Services	Research Center for Zoonosis Control	A	2013. 5.29
		Division of Tsetse Control Services	Research Center for Zoonosis Control	A	2013. 5.29

3) International Consortia

Data as of May 1, 2016

Name	Number of Members / Countries	Contents	Type	Joined
International Antarctic Institute	18 Institutions from 13 Countries	Academic, Student Exchange	University Level	July 8, 2006
Canada-Japan Strategic Student Exchange Program	Bilaterally 22 Institutions 12 from Japan, 10 from Canada	Student Exchange	University Level	December 8, 2006
ProSPER.Net (The network for the Promotion of Sustainability in Postgraduate Education and Research)	31 Institution from 12 Countries / Regions	Academic, Student Exchange	University Level	June 21, 2008
France-Japan-Vietnam Network in Singularity Theory	Trilaterally 11 Institutions 4 from Japan, 6 from France, 1 from Vietnam	Academic, Student Exchange	Faculty Level (Faculty of Science)	January 1, 2011
University of the Arctic	171 Institutions from 16 Countries	Academic, Student Exchange	University Level	June 8, 2011

7. Research Grants, Joint Research, etc

(2015 Fiscal Year)

Name	Number of Projects	Amounts (Thousand Yen)
Grant-in-Aid for Scientific Research	796	3,935,413
Grant-in-Aid for Scientific Research (Multi-year Fund)	1,290	2,117,930
Grant-in-Aid for Scientific Research by the Ministry of Health, Labour and Welfare	11	194,686
Joint Research	597	1,609,399
Commissioned Research	632	5,632,597
Other Grants-in-Aid (Competitive Funds)	10	840,273
Research Grants	-	1,183,626
Endowments for Research	5,058	2,247,683

8. Hokkaido University Museum at a Glance

1) Number of Objects and Specimens

Category (international abbreviation)	Quantity	(unsorted)
Land Plants (SAPS)	400,000	(150,000)
Fungi (SAPA)	170,000	
Marine Algae (SAP)	140,000	
Insects (SEHU)	2,000,000	
Fish (HUMZ)	230,000	
Invertebrates (ZIHU)	2,425	
Extinct Plants and Animals	20,000	
Rocks and Minenals	71,350	(50,000)
Archaeology	30,000	
TOTAL	3,063,775	

2) Specimen Types

Category (international abbreviation)	Number of Specimens
Insects	10,000
Plants	323
Invertebrates	700
Geology (fossils minerals)	10
Fish	1,200
Marine Algae	350
Extinct Plants and Animals	700
TOTAL	13,283

9. Hokkaido University Hospital at a Glance

1) Medical Clinical Department

Clinical Sections	Number of Beds	Number of Patients (2015 Fiscal Year)	
		Outpatients	Inpatients
Internal Medicine I	44	22,717	16,769
Internal Medicine II	47	47,044	16,226
Gastroenterology and Hepatology	44	45,084	17,321
Cardiovascular Medicine	32	14,069	11,883
Hematology	36	12,597	13,008
Medical Oncology	5	3,259	5,652
Gastroenterological Surgery I	40	9,728	16,665
Gastroenterological Surgery II	22	3,684	9,643
Cardiovascular and Thoracic Surgery	24	6,158	10,879
Orthopaedic Surgery	48	27,034	19,103
Urology	32	20,211	12,043
Anesthesiology	2	10,078	33
Plastic Surgery	25	7,420	7,317
Sports Medicine	6	2,672	1,766
Breast Surgery	6	8,940	2,256
Emergency Service	6	1,350	4,710
Neurological Medicine	16	15,464	7,696
Ophthalmology	32	38,947	12,846
Otolaryngology	32	16,866	12,771
Dermatology	22	15,959	7,522
Psychiatry and Neurology	72	47,194	19,747
Neurosurgery	32	9,131	14,283
Rehabilitation and Physical Medicine	20	49,253	3,947
Obstetrics	38	10,612	16,945
Gynecology	30	22,912	10,771
Pediatrics	39	18,102	14,009
Radiation Oncology	17	21,313	6,018
Diagnostic and Interventional Radiology	1	49,802	232
Nuclear Medicine	6	6,896	3,235
Intensive Care Unit (ICU)	10	-	(3,384)
Neonatal Intensive Care Unit (NICU)	9	-	(3,036)
Growing Care Unit (GCU)	(11)	-	(2,938)
Maternal Fetal Intensive Care Unit (MFICU)	(3)	-	(1,071)
Highly Qualified Clean Ward	6	-	(1,035)
Common beds	109	-	(8,333)
TOTAL	910	564,496	295,296

The numbers in the parentheses in the above table are included in the number of each clinical section.

2) Dental Clinical Department

Clinical Sections	Number of Beds	Number of Patients (2015 Fiscal Year)	
		Outpatients	Inpatients
Preventive Dentistry	26	6,792	7,898
Endodontics and Periodontics		33,641	
Crown and Bridge Prosthodontics		12,060	
Gerodontology		15,897	
Dentistry for Children and Disabled Persons		10,298	
Orthodontics		12,926	
Restorative Dentistry		15,799	
Removable Prosthodontics		19,115	
Oral Medicine		18,981	
Oral and Maxillofacial Surgery		18,328	
Dental Radiology		4,812	
Dental Anesthesiology		2,735	
Center for Advanced Oral Medicine		8,604	
Division for General Dentistry		2,223	
TOTAL	26	182,211	7,898

Clinical Sections	Number of Beds	Number of Patients (2015 Fiscal Year)	
		Outpatients	Inpatients
GRAND TOTAL	936	746,707	303,194

*The number of the designated beds is 946.

10. Hokkaido University Library at a Glance

1) Collections in Library

	Japanese Books	Foreign Books	TOTAL BOOKS	Journals
Central Library	1,025,408	840,823	1,866,231	33,088
North Library	259,683	117,698	377,381	1,732
SUBTOTAL	1,285,091	958,521	2,243,612	34,820

2) Collections by Department

Creative Research Institution	4	3	7	7
Center for Research and Development in Higher Education	3,809	1,046	4,855	178
Letters	158,924	123,018	281,942	5,046
Law	7,719	1,954	9,673	1,131
Economics and Business Education	10,028	4,356	14,384	1,116
Medicine	57,653	97,634	155,287	5,924
Dental Medicine	24,478	20,556	45,034	1,190
Veterinary Medicine	11,189	26,232	37,421	1,426
Information Science and Technology	14,017	17,736	31,753	869
Fisheries Sciences	76,949	54,813	131,762	5,247
Environmental Science / Environmental Earth Science	10,289	8,777	19,066	624
Science	44,136	177,071	221,207	4,202
Pharmaceutical Sciences and Pharmacy	7,258	3,711	10,969	293
Agriculture	140,217	108,285	248,502	8,464
Life Science / Advanced Life Science	197	176	373	49
Education	16,399	4,093	20,492	966
International Media, Communication, and Tourism Studies / Media and Communication	6,450	8,805	15,255	349
Health Sciences	31,594	4,070	35,664	905
Engineering	115,637	112,637	228,274	5,604
Public Policy	1	0	1	2
Institute of Low Temperature Science	11,343	25,312	36,655	1,746
Research Institute for Electronic Science	1,122	795	1,917	26
Institute for Genetic Medicine	489	293	782	26
Institute for Catalysis	4,651	16,772	21,423	461
Slavic-Eurasian Research Center	2,441	66,728	69,169	1,849
Information Initiative Center	0	0	0	57
Hokkaido University Museum	9,466	3,508	12,974	1,208
Field Science Center for Northern Biosphere	5,975	1,762	7,737	88
Hokkaido University Archives	3,010	64	3,074	0
Center for Ainu and Indigenous Studies	3,191	479	3,670	121
Office of International Affairs	0	0	0	3
GRAND TOTAL	2,063,727	1,849,207	3,912,934	83,997

Data as of March 31, 2016

3) Library Use Information

(2015 Fiscal Year)

	Central Library	North Library
Visits	489,286	723,599
Borrowers	117,527	100,313
Total circulation	182,178	160,032
Interlibrary loan document delivery : requests to others	1,236	221
Interlibrary loan document delivery : requests from others	4,362	113
Interlibrary loan : requests to others	652	65
Interlibrary loan : requests from others	1,630	73
Reading desks/seats	716	866

