

# Hokkaido University Guidebook

---

2016-2017



HOKKAIDO  
UNIVERSITY





## Contents

<b>1. President's Message</b> .....	01
<b>2. University Philosophies</b> .....	02
<b>3. Introduction</b> .....	03
1) HU Prizes	
2) HU Honors (Honorary Degree Recipients)	
3) HU at a Glance	
<b>4. Programs and Support in English</b> .....	07
1) Undergraduate Level	
2) Graduate Level	
3) Hokkaido Summer Institute	
4) International Student Support	
<b>5. International Exchange Programs</b> .....	15
1) For Foreign Students	
2) For Domestic Students	
<b>6. International Symposia</b> .....	16
<b>7. International Programs for Domestic Students</b> 16	
1) Nitobe College	
2) Nitobe School	
3) Global Career Design (First Step Program)	
4) Short-Team Programs (Summer Programs / Spring Programs)	
5) Overseas Short-Team Special Programs on Global Leadership	
<b>8. Graduate Schools / Faculties / Schools</b> .....	19
1) Graduate School of Letters/Faculty of Letters	
2) Graduate School of Law / School of Law	
3) Graduate School of Economics and Business Administration / School of Economics and Business Administration	
4) Graduate School of Education / Faculty of Education / School of Education	
5) Graduate School of International Media, Communication, and Tourism Studies / Research Faculty of Media and Communication	
6) Graduate School of Public Policy / Faculty of Public Policy	
7) Graduate School of Medicine / School of Medicine	
8) Graduate School of Dental Medicine / School of Dental Medicine	
9) Graduate School of Veterinary Medicine / School of Veterinary Medicine	
10) Faculty of Pharmaceutical Sciences / School of Pharmaceutical Sciences and Pharmacy	
11) Graduate School of Health Sciences / Faculty of Health Sciences	
12) Graduate School of Information Science and Technology	
13) Graduate School of Fisheries Sciences / Faculty of Fisheries Sciences / School of Fisheries Sciences	
14) Graduate School of Environmental Science / Faculty of Environmental Earth Science	
15) Graduate School of Science / Faculty of Science / School of Science	
16) Graduate School of Agriculture / Research Faculty of Agriculture / School of Agriculture	
17) Graduate School of Life Science	
18) Faculty of Advanced Life Science	
19) Graduate School of Engineering / Faculty of Engineering / School of Engineering	
20) Graduate School of Chemical Sciences and Engineering	
<b>9. Research Institutes</b> .....	32
1) Institute of Low Temperature Science	
2) Research Institute for Electronic Science	
3) Institute for Genetic Medicine	
4) Institute for Catalysis	
<b>10. Research Centers</b> .....	33
1) Slavic-Eurasian Research Center	
2) Information Initiative Center	
3) Research Center for Zoonosis Control	
<b>11. Joint-Use Facilities</b> .....	34
1) Research Centers	
2) Educational Centers	
3) Specific Operations	
<b>12. Hokkaido University Libraries</b> .....	36
<b>13. Hokkaido University Hospital</b> .....	36
<b>14. Global Institution for Collaborative Research     and Education (GI-CoRE)</b> .....	37
1) Global Station for Quantum Medical Science and Engineering (GSQ)	
2) Global Station for Zoonosis Control (GSZ)	
3) Global Station for Food, Land, and Water Resources (GSF)	
4) Global Station for Soft Matter (GSS)	
5) Global Station for Big Data and Cybersecurity (GSB)	
6) Global Station for Arctic Research (GSA)	
<b>15. Campus Centers</b> .....	38
1) Creative Research Institution (CRIS)	
2) Institute for the Promotion of Business-Regional Collaboration	
3) Office for Enhancing Institutional Capacity	
4) Admission Center	
5) Career Center	
6) Institute for the Advancement of Higher Education	
7) Institute for International Collaboration	
<b>16. Campus Offices</b> .....	41
1) Front Office for Human Resource Education and Development	
2) Office for a Sustainable Campus	
3) Office of Health and Safety	
<b>17. Overseas Satellite Offices</b> .....	43
1) Korea Office in Seoul	
2) Europe Office in Helsinki	
3) Africa Office in Lusaka	
<b>18. Hokkaido University Alumni Associations</b> ...	44
<b>19. Hokkaido University Ambassador and     Partner System</b> .....	45
<b>20. Campus Maps</b> .....	46
1) Hakodate Campus Map	
2) Sapporo Campus Map	
<b>Supplementary Materials</b>	
Data Book (in back pocket)	

# 1. President's Message

Hokkaido University was founded in 1876 as Sapporo Agricultural College, one of the nation's first institutes of higher education established in the early years of the Meiji era. "Boys, be ambitious!" is what Dr. William S. Clark, the college's first viceprincipal, was quoted as telling his students before leaving Sapporo. This phrase is well-known among Japan's youth and also serves as Hokkaido University's maxim.

Hokkaido University upholds the educational and research philosophies of "Frontier Spirit", "Global Perspectives", "All-Round Education", and "Practical Learning", which developed over our 140-year history. Currently, all our faculty members, students, and graduates are making a concerted effort to transform the campus into a global base for education and research.



## Improvement and Internationalization of Education

Hokkaido University nurtures internationally minded, well-rounded citizens by helping students acquire expertise and personally develop independently and holistically through general, specialized, and graduate education. Based on this policy, in 2011 we implemented a drastic reform of our entrance examination system. As a result, students in our general education classes can now pursue studies in the undergraduate faculty of their choice, instead of having to remain in a pre-determined course of study. The reforms also encourage interactions between students as befits a comprehensive institute of higher learning.

In the 2013 fiscal year, Nitobe College was founded as an undergraduate program that supports overseas study. Then in the 2015 fiscal year, the Nitobe School for graduate students was founded to create classroom environments in which students of different nationalities, languages, cultures, and specialist backgrounds can nurture their abilities to utilize special skills through intensive team-learning activities. Through these efforts, Hokkaido University is building an advanced system for developing graduates who can compete in the international arena.

## Internationalization of Research

Hokkaido University is strengthening its foundations of education and research by placing an increased emphasis on graduate education. At the same time, we are making our educational and research organizations more efficient by promoting flexibility in the organizational structures of our graduate schools and advancing a faculty and graduate school framework designed to encourage pioneering interdisciplinary research and education.

Through such initiatives, we strive to create new research bases for interdisciplinary projects, provide lectures in foreign languages, and accept competent international students to further our development into a university open to the world and into a global center for education and research.

## Partnerships with Society

Hokkaido University is developing a host of projects intended to enhance public awareness of the university—utilizing our satellite offices inside and outside Japan as bases for transmitting information to the public and promoting exchanges with local communities, improving our websites and public relations magazines, offering an open campus for high school students, organizing extension lecture programs, and improving our OpenCourseWare system, which makes course materials available to the world.

The university also strives to share research findings with society and strengthen partnerships with local communities and industries by enhancing and utilizing joint venture hubs and joint Centers of Excellence in cooperation with various regions and industries. These hubs and centers are developed under a collaborative framework led by the Institute for the Promotion of Business-Regional Collaboration, which was established to take "Practical Learning" to new heights.

## Contributing Toward the Resolution of Global Issues

In 2026, the University will mark its 150th year. As we approach this important anniversary, we recognize anew the need to reexamine our role in society by contributing toward the resolution of global issues. To this end, we have compiled a "Future Strategy for the 150th Anniversary of Hokkaido University".

Boldly and steadily, we will continue to adapt and reform the university based on our guiding philosophies and long-term goals.

A handwritten signature in black ink that reads "Keizo Yamaguchi". The signature is written in a cursive, flowing style.

President of Hokkaido University

## 2. University Philosophies

### Frontier Spirit

Our Frontier Spirit epitomizes the ideal that both students and the academic and administrative staff should resolutely take up their daily challenges with an eye to forging new paths. It has its origins in the words "lofty ambition" uttered by Dr. W. S. Clark during the opening ceremony of Sapporo Agricultural College. This basic philosophy has served as the foundation on which Hokkaido University has rested for more than a century. The twenty-first century frontier spirit manifests itself in our continued expansion of research in response to shifting academic paradigms and the new challenges facing humanity. Based on a firm foundation of academic freedom, Hokkaido University aims to encourage creative research that does not separate theory from practice, and to promote world-class study to solve the problems confronting humankind.

We will do so by dramatically improving our research and educational activities via the flexible organization of our graduate schools and other networks.



### Global Perspectives

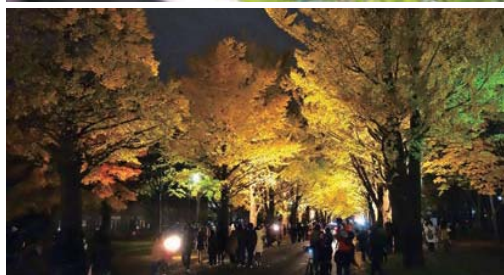
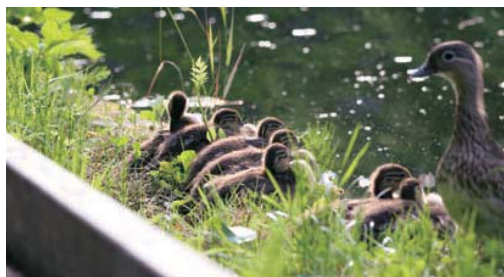
From its very start, Sapporo Agricultural College was always open to different world-views, introducing Western culture, science, and technology, and providing English-language lectures by foreign teachers. Ever since, many of our graduates have played active roles overseas, and our philosophy of the value of acquiring global perspectives has been passed down in many different forms. Needless to say, we must cultivate a better understanding of other cultures by enriching our liberal arts education, underpinned by an awareness of our own culture. By cultivating communication skills in foreign languages, we can better prepare ourselves for playing a more active role in the global arena. To help our students and staff acquire global perspectives and thus contribute to the development of an international society, Hokkaido University seeks to provide ample opportunities for study and research abroad. We actively encourage the admission of foreign students and researchers, and promote cultural and social exchanges with people in Asia and the northern regions, and throughout the rest of the world.

### All-Round Education

Sapporo Agricultural College not only trained agricultural experts, but also produced graduates endowed with a rich humanity, lofty intellect, and broad range of knowledge. The results can be seen in the succession of outstanding thinkers and literary figures the college produced, including Kanzo Uchimura, Shigetaka Shiga, Inazo Nitobe, and Takeo Arishima. This philosophy of an all-around education has been handed down at Hokkaido University through our tradition of emphasizing a liberal arts education as the key to producing graduates armed with the well-rounded acuity and deep insights they need to apply their specialized knowledge. To further advance this philosophy, Hokkaido University seeks to provide an all-around education that will cultivate a rich humanity and lofty intellect, foster a spirit of freedom and independence, and encourage students to establish autonomous identities. We believe this kind of education produces graduates who respect human rights and have the basic abilities required to accurately respond to society's needs.

### Practical Learning

Our philosophy of emphasizing practical learning acquired a dual significance in the course of the various hardships Sapporo Agricultural College overcame as it developed into today's comprehensive university. We look on research as the process of creating universal learning that is integrated with the real world, and we seek to emphasize not only basic research but also focus on returning the fruits of our research to society by prioritizing its practical applications. The botanical research conducted by Kingo Miyabe and the research on snow by Ukichiro Nakaya, both carried out in the vast wilderness of Hokkaido, are outstanding examples of research on familiar topics that led to universal truths. Much of the research at Hokkaido University is developed in collaboration with regional industries. Hokkaido University intends to pursue a modern emphasis on practical learning, utilizing absolute truths that are grounded in the real world. By making full use of Hokkaido's unique characteristics and expanding our collaboration with government, industry, and academia, we aim to give back the fruits of our research to Hokkaido, Japan, and the rest of the world. In addition, Hokkaido University strives to produce leading experts and professionals in our graduate schools, and to improve our adult education program.



## 3. Introduction

### 1) HU Prizes

#### Nobel Prize

Emeritus Professor Akira Suzuki, who has worked for more than 40 years at Hokkaido University after graduating, won a Nobel Prize in Chemistry in 2010. The prize was given for “palladium-catalyzed cross couplings in organic synthesis”, which produce a more stable, nontoxic reaction compared with other reactions, an innovation that drastically changed the methodology of organic synthetic chemistry, which serves as a foundation for manufacturing. It also has made a significant contribution to the development of products that are familiar in our daily life, such as pharmaceutical drugs, pesticides, liquid crystals, and organic light-emitting diodes. The achievement perfectly embodies our philosophy of “practical learning”.

Professor Emeritus and University Professor  
**Akira SUZUKI**  
Nobel Prize Winner Chemistry 2010



#### Stockholm Water Prize

The world's most prestigious award for achievements made in areas concerning water. The prize is conferred by King Carl XVI Gustaf of Sweden.

Name	Year	Title	Reason
KUBO, Takeshi	1994	School of Engineering Alumnus	Wastewater treatment and planning
ASANO, Takashi	2001	Professor Emeritus	Wastewater reclamation, reuse, and recycling research

#### Order of Culture Prize

The prestigious Order of Culture Prize was established in 1937. This prize is awarded to men and women for contributions to Japan's art, literature, or culture. Prizes are conferred by the Emperor of Japan in person on Culture Day on November 3 each year.

Name	Year	Title	Reason
MIYABE, Kingo	1946	Professor Emeritus	Botanical study
SUZUKI, Akira	2010	Professor Emeritus	Developing a chemical tool known as palladium-catalyzed cross-couplings for organic boron compounds

#### Persons of Cultural Merit

The system for Persons of Cultural Merit was established in 1951 by the Law on Pensions for the Persons of Cultural Merit. Its purpose is to honor persons of cultural merit by providing a special government-sponsored pension.

Name	Year	Title	Reason
MATSUMURA, Shonen	1954	Professor Emeritus	Entomological study
ITO, Seiya	1959	Professor Emeritus	Phytopathological study of crop diseases and fungi
SAKAMURA, Tetsu	1976	Professor Emeritus	Plant-cell study of wheat chromosome and plant-physiological study of mold
TAKAHASHI, Man-emon	1995	Professor Emeritus	Genetic study of rice
SUZUKI, Akira	2010	Professor Emeritus	Developing a chemical tool known as palladium-catalyzed cross-couplings for organic boron compounds
YAMAGISHI, Toshio	2013	Professor Emeritus	Research on social dilemmas and trust

#### The Japan Academy Prize

\*Imperial Academy Prize

Name	Year	Title	Reason
KON, Yutaka	1934*	Professor of Medicine	Research on silver reaction of cells
KUNUGI, Kinjiro	1939*	Professor of Science	Research on the theory of abstract spaces
HORIUCHI, Juro	1940*	Professor of Science	Theoretical and experimental research on chemical kinetics
NAKAYA, Ukichiro	1941*	Professor of Science	Physical investigations of snow
KAYA, Seiji	1942*	Professor of Science	Magnetic studies of ferromagnetic crystals
SUZUKI, Jun	1949	Professor of Science	Studies on ultrabasic rocks and the ore deposits accompanying them
MAKINO, Sajiro	1958	Professor of Science	Studies on chromosomes in animals
FUKUSHI, Teikichi	1958	Professor of Agriculture	Studies on insect transmission of plant viral diseases
NAGAO, Seijin	1965	Professor of Agriculture	Studies on twelve linkage groups in rice
TAKAHASHI, Man-emon	1965	Professor of Agriculture	Studies on twelve linkage groups in rice
FUJITA, Kotatsu	1971	Professor of Letters	Study of early Pure Land Buddhism
ISHIZUKA, Yoshiaki	1975	Professor Emeritus	Nutrio-physiological studies on the rice plant, and application to rice production (joint research)
TANAKA, Akira	1975	Professor of Agriculture	Nutrio-physiological studies on the rice plant, and application to rice production (joint research)
YOKOYAMA, Izumi	1981	Professor of Science	Structure of volcanoes as disclosed by gravity anomaly distribution
BAN, Yoshio	1984	Professor of Pharmacology	Studies of the synthesis of the indole group of alkaloids
SHIKATA, Eishiro	1986	Professor of Agriculture	Studies on plant viruses and viroids
KINOSHITA, Toshiro	1993	Professor of Agriculture	Genetic studies on the interaction between cytoplasmic and nuclear genomes, and the application of these studies to crop breeding
OHTSUKA, Eiko	1996	Professor of Pharmacology	Synthesis and functional studies on nucleic acids: synthetic c-Ha-ras gene and related subjects (joint research)
MATSUNO, Taro	1997	Professor of Environmental Earth Science	Elucidation of atmospheric dynamics in the stratosphere and mesosphere
SUZUKI, Akira	2004	Professor Emeritus	Studies on the development of new synthetic reactions using palladium catalysts (joint research)
KIDA, Hiroshi	2005	Professor of Veterinary Medicine	Studies on the control of influenza: mechanism of emergence of pandemic influenza virus strains in poultry, domestic animals and humans, and molecular basis of the neutralization of viral infectivity with antibodies

## 2) HU Honors (Honorary Degree Recipients)

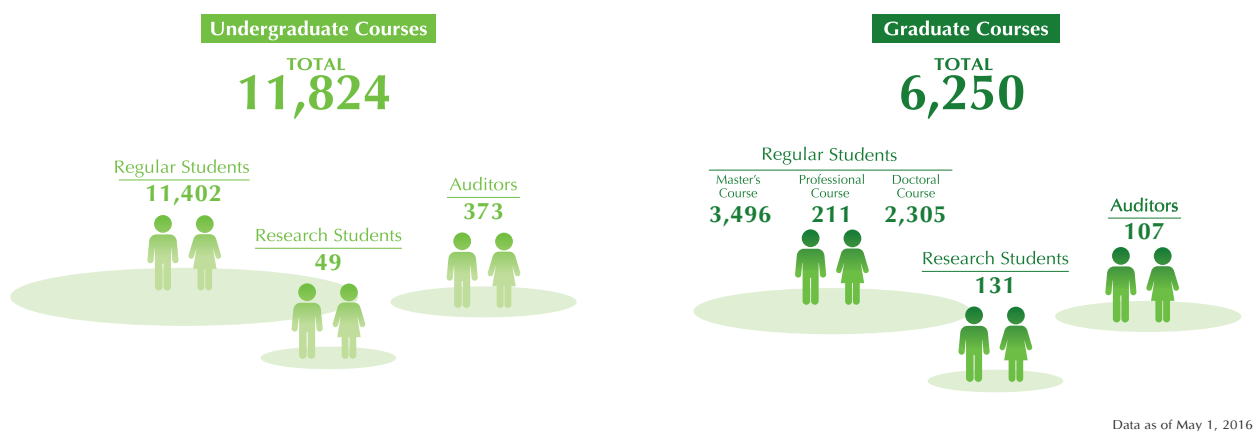
Recipient	Date Conferred	Title	Country
LEDERLE, John W.	1963.4.29	15th President, University of Massachusetts	U.S.A.
MATHER, Jean P.	1963.4.29	14th President, University of Massachusetts	U.S.A.
HECKLER, Hermann	1965.3.23	Hokkaido University foreign instructor	Germany
KELLY, Harry C.	1965.7.2	Provost, North Carolina State University	U.S.A.
ROBINSON, Robert	1965.7.2	Director, Shell Chemical Co., 1947 Nobel Prize in Chemistry	U.K.
WOOD, Robert C.	1976.9.15	President, University of Massachusetts	U.S.A.
BROMERY, Randolph W.	1976.9.15	President, University of Massachusetts, Amherst	U.S.A.
BLUMEL, Joseph C.	1976.9.15	4th President, Portland State University	U.S.A.
MAKI, John M.	1976.9.15	Professor, University of Massachusetts	U.S.A.
HELBIG, Herbert	1976.9.15	Professor Emeritus, Free University of Berlin	Germany
DODGE, Robert E.	1976.9.15	Professor, Portland State University	U.S.A.
HESSLAND, Ivar R.	1976.9.15	Professor, Stockholm University	Sweden
KUPCHAN, S. Morris	1976.9.15	Professor, University of Virginia	U.S.A.
BLOCH, Konrad E.	1976.9.15	Professor, Harvard University, 1964 Nobel Prize in Physiology or Medicine	U.S.A.
LOBITZ, Walter C., Jr.	1976.9.15	Professor, University of Oregon Medical School	U.S.A.
SEEVERS, Maurice H.	1976.9.15	Professor Emeritus, University of Michigan	U.S.A.
EMMETT, Paul H.	1976.9.15	Visiting Professor, Portland State University	U.S.A.
DRAKE, Mack	1977.11.3	Professor, University of Massachusetts	U.S.A.
TODD, Alexander R.	1978.3.27	Professor, Cambridge University, Master of Christ's College	U.K.
MELLEN, William J.	1989.7.3	Professor Emeritus, University of Massachusetts	U.S.A.
COREY, Elias J.	1990.9.3	Professor, Harvard University, 1990 Nobel Prize in Chemistry	U.S.A.
KONISHI, Masakazu	1991.8.29	Professor, California Institute of Technology	U.S.A.
BOCKRIS, John O'Mara	1991.9.19	Professor, Texas A&M University	U.S.A.
ASCHOFF, Jürgen W.	1993.8.27	Professor Emeritus, Max Planck Institute for Behavioral Physiology	Germany
KHORANA, Har Gorbind	1993.11.11	Professor Emeritus, Massachusetts Institute of Technology, 1968 Nobel Prize in Physiology or Medicine	U.S.A.
BERN, Howard A.	1994.10.21	Professor Emeritus, University of California, Berkeley	U.S.A.
ALEXANDER, Vera	1999.4.26	Professor, University of Alaska, Fairbanks	U.S.A.
MOHRI, Mamoru	2000.4.17	Director, National Museum of Emerging Science and Innovation	Japan
LEE, Ki-Jun	2000.8.7	President, Seoul National University	Republic of Korea
SCOTT, David K.	2001.2.7	Chancellor, University of Massachusetts, Amherst	U.S.A.
KNAPP, David C.	2001.11.8	President Emeritus, University of Massachusetts	U.S.A.
PARSONS, Timothy R.	2001.11.20	Professor Emeritus, University of British Columbia	Canada
YANAGIMACHI, Ryuzo	2002.1.22	Professor, University of Hawai'i at Manoa, John A. Burns School of Medicine	Japan
ASANO, Takashi	2004.5.25	Professor Emeritus, University of California, Davis	U.S.A.
FANGER, Povl O.	2004.7.16	Professor, Technical University of Denmark	Denmark
MARSHALL, Barry J.	2006.3.15	Honorary Clinical Professor, University of Western Australia, 2005 Nobel Prize in Physiology or Medicine	Australia
MATSUDA, Masatake	2009.3.10	Director Advisor, East Japan Railway Co., President Emeritus, Hokkaido University Federation of Alumni Association	Japan
YUNUS, Muhammad	2009.9.29	Managing Director, Grameen Bank, 2006 Nobel Peace Prize	Bangladesh
LEE, Jang Moo	2011.10.17	President Emeritus, Seoul National University	Republic of Korea

### 3) Hokkaido University at a Glance

#### ① Number of Staff

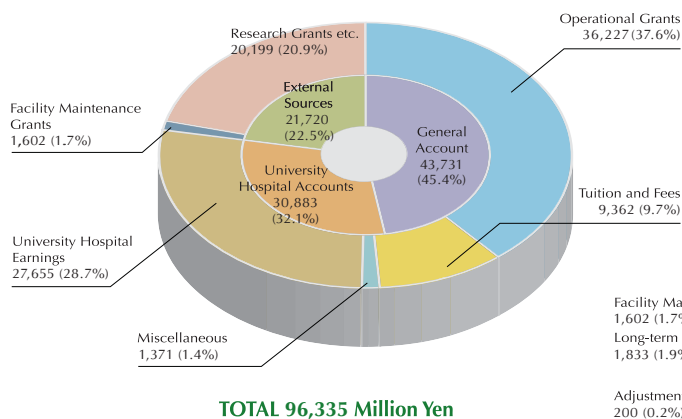


#### ② Number of Students

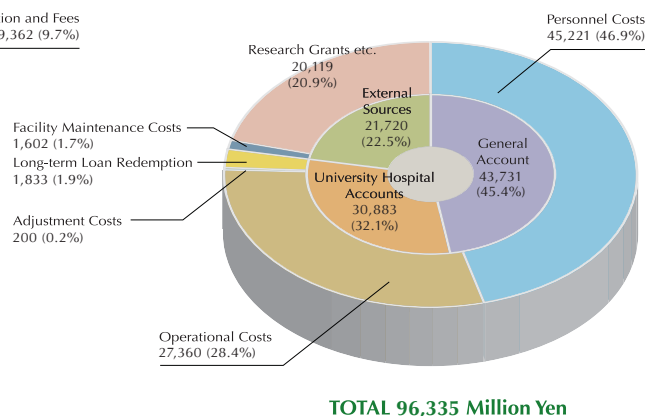


#### ③ University Revenue and Expenditure

##### Revenue Budget for Fiscal Year 2016

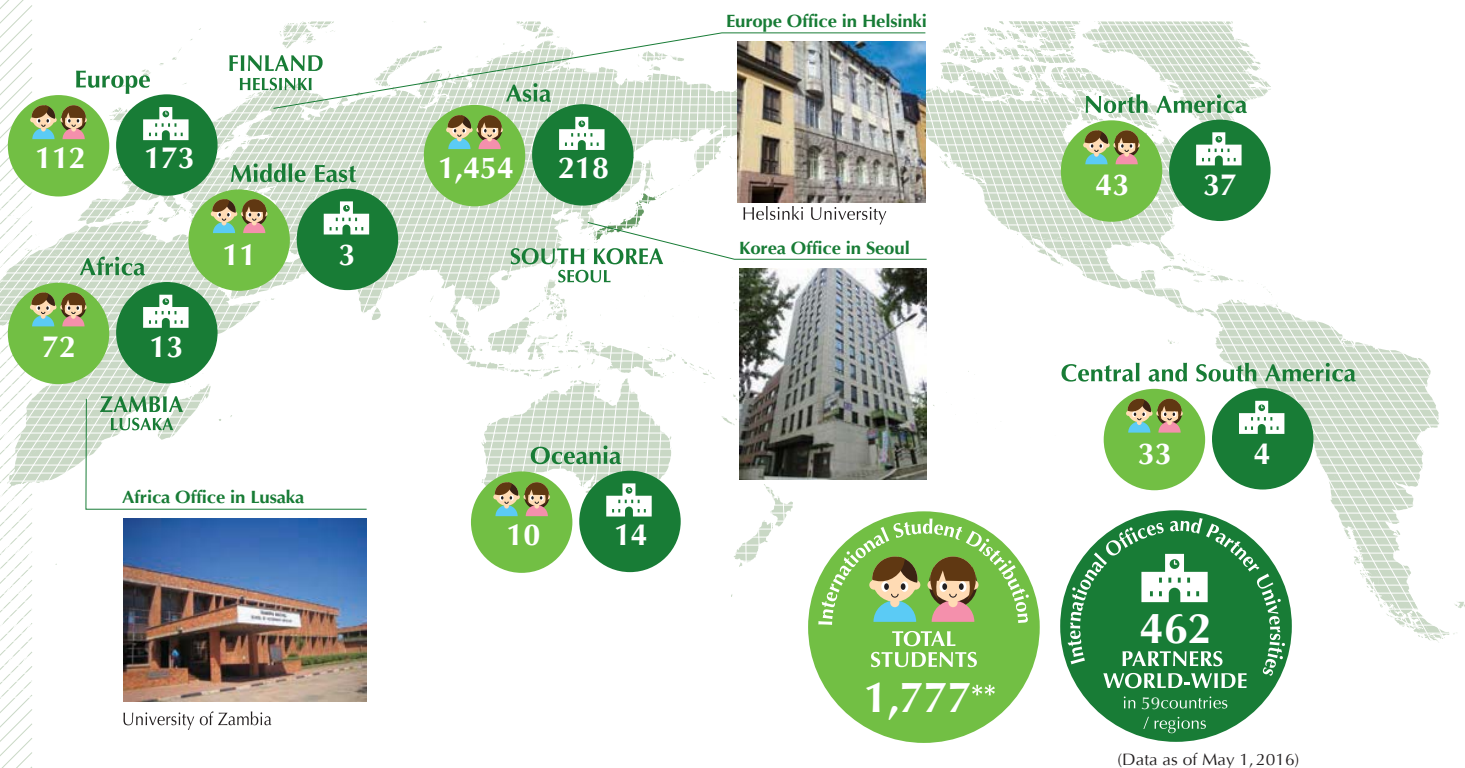


##### Expenditure Budget for Fiscal Year 2016

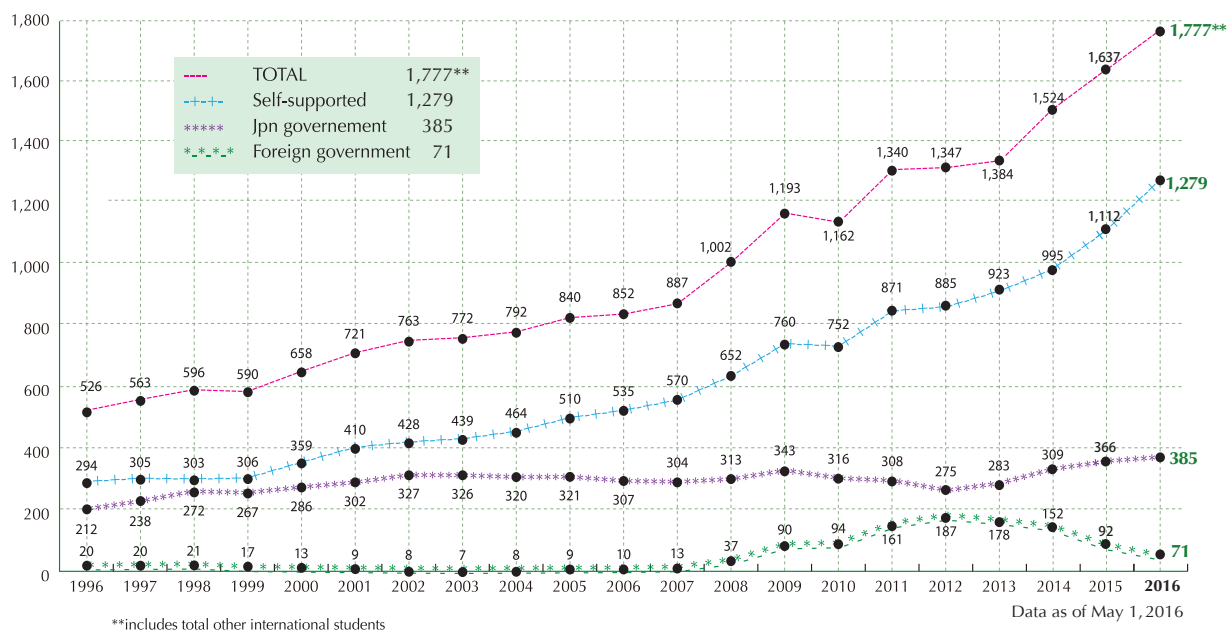


\*The accounting classifications in the inner circles and the item classifications in the outer circles do not necessarily correspond to each other.

#### ④ International Students in HU, Partner Universities, and Overseas Satellite Offices



#### ⑤ International Student Numbers & Sources of Financial Support 1996-2016



#### ⑥ Outbound Program Data

**46** 2015 / 2016 Exchange Program Participant Numbers

over **50** countries / regions and over **250** universities students can choose from for student exchange

**264** 2015 / 2016 Summer / Spring Program Participant Numbers

## 4. Programs and Support in English

### 1) Undergraduate Level

#### ① Modern Japanese Studies Program (MJSP)

The Modern Japanese Studies Program (MJSP) is a four-year bachelor's degree program, preceded by a six-months Intensive Japanese Course for students without sufficient Japanese skills to enter the bachelor's degree program directly. MJSP gives a comprehensive education in the language and society of Japan.



The program has four main characteristics:

- Intensive study of the Japanese language—students should be completely fluent upon graduation;
- The study of Japan in four main academic disciplines—history, cultural studies, sociology, and political economy;
- Co-learning with Japanese students—students take many classes with their Japanese peers; and
- A curriculum that allows students to discover their own Japan from the unique and multicultural vantage point of Japan's northernmost island.

There are two modules to choose from: History / Culture and Society / Political Economy. One becomes the major and the other the minor. In the first two to three years, these subjects are taught in English by an international team of educators with world-class research profiles. Once students have sufficient Japanese skills, they may also take courses in Japanese in the faculties of Law, Letters, Education, and Economics and Business Administration.

Program Details

- Degree Title: Bachelor's Degree (Arts & Sciences)
- Program Length: 4 years (4.5 years including the Intensive Japanese Course)
- Starting Date: October (Intensive Japanese Course + Bachelor's Degree program), April (Bachelor's Degree program only)
- Number of Students: 20 per year

Hokkaido University has a scholarship program (Modern Japanese Studies Program Scholarship Program) for students participating in the Modern Japanese Studies Program.



#### ② Integrated Science Program (ISP)

The Integrated Science Program (ISP) at Hokkaido University is a cross-disciplinary educational science program for international students interested in pursuing degrees in the natural sciences. The program's strong cross-disciplinary nature aims to give students an excellent scientific education across the core scientific disciplines (biology, chemistry, physics), while allowing them to specialize in particular fields in later years in accordance with their own interests. While students' main scientific studies are entirely in English, a multitude of additional liberal arts and Japanese language courses are available to ensure they receive a rich and fulfilling education while at Hokkaido University. A range of ISP scholarships are available that provide waivers of the enrollment fee.

The program comprises a four-year Bachelor's degree and a two-year Master's degree. The latter includes an active research component, in which the students are affiliated with one of the university's prestigious graduate schools to learn the techniques and skills needed to flourish as scientists and researchers in or out of academia. With Hokkaido University's advanced graduation initiative, we offer highly motivated and capable students the opportunity to graduate from the Bachelor's and Master's degree programs in 3.5 and 1.5 years, respectively. This means the combined course may be completed in only 5 years, which is shorter than most other international universities, giving graduates an edge in an increasingly competitive job market.



## 2) Graduate Level

### ① Fostering Global Leaders in Veterinary Science Toward Contributing to One Health [Doctorate]

<http://www.vetmed.hokudai.ac.jp/onehealth/en/>



The Graduate School of Veterinary Medicine's education and research focuses on life sciences, ecosystem conservation, and maintaining healthy and sound living environments of both humans and animals. The graduate school has been selected as the Program for Leading Graduate Schools for its "Fostering Global Leaders in Veterinary Science for Contributing to One Health". This initiative offers students stronger basic education programs, more opportunities for hands-on overseas activities, and better internship opportunities to reinforce the education provided by the Graduate School of Veterinary Medicine. The program focuses on fostering experts who can contribute to controlling zoonotic diseases and health problems caused by hazardous chemicals. To achieve this, we provide extensive coursework that focuses on zoonosis and chemical hazard control. Our education and research activities include laboratory-based work as well as going out into the field. We look forward to welcoming you on campus.



#### Degrees Obtainable

Doctor of Philosophy (Veterinary Medicine, Veterinary Medicine-Zoonosis Control Expert, Veterinary Medicine-Chemical Hazard Control Expert)

#### Scholarships / Financial Support

Program Specific	Scholarship from Leading Program (until enrollments in April 2017)
University Wide	MEXT *

### ② Special Training Program for Veterinary Researchers Toward Building an International Network of Veterinary Researchers [Doctorate]

[http://www.vetmed.hokudai.ac.jp/PGP/cover\\_page.html](http://www.vetmed.hokudai.ac.jp/PGP/cover_page.html)

Welcome to our unique program! Our faculty and graduate school conduct joint educational programs and research projects with foreign universities, and we are engaged in a diverse range of outreach activities to put our knowledge of veterinary science into practical use.

In 2007, the Graduate School of Veterinary Medicine, in cooperation with the Research Center for Zoonosis Control, launched this special program designed for international students wishing to study veterinary science at Hokkaido University.

We help our students become leaders and experts who can work at the forefront of veterinary science in their home countries for the betterment of animal health and the global environment. We welcome highly motivated applicants to our sophisticated institutes and look forward to seeing you on campus in the future.



#### Degrees Obtainable

Doctor of Philosophy

#### Scholarships / Financial Support

Program Specific	None
University Wide	MEXT *

### ③ Course in Global Environmental Management (GEM) [Master's / Doctorate]

<http://www.ees.hokudai.ac.jp/division/kigaku/modules/courses/GEM.html>

This course aims to foster professionals who can contribute solving global environmental problems. Bringing both foreign and Japanese students together, this course aims to provide the advanced knowledge and skills needed for international cooperation, research, and investigation in fields such as resource management, environmental education, and human capacity building. Students also conduct research relevant to their coursework.

The course is taught in English.

#### Degrees Obtainable

Master of Environmental Science, Doctor of Philosophy

#### Scholarships / Financial Support

Program Specific	None
University Wide	MEXT *



#### ④ English Program of Environmental Earth Science for Sustainable Society (EPEES) [Master's / Doctorate]

<http://www.ees.hokudai.ac.jp/modules/bulletin/index.php?page=article&storyid=300>



EPEES is a Graduate School of Environmental Science program with Master's and Doctoral courses. The program is intended to foster professionals and researchers who can contribute to solving international environmental problems by providing them with extensive knowledge and a global perspective. The program is conducted entirely in English. Students are required to pursue a main research topic and study a subresearch topic as a mini-project. The program is run by the Division of Environmental Science Development in conjunction with three other Graduate School divisions. Pre-arrival Admission is available for this program.



##### Degrees Obtainable

Master of Environmental Science, Doctor of Philosophy (Environmental Science)

##### Scholarships / Financial Support

Program Specific	None
University Wide	MEXT *

#### ⑤ Special Postgraduate Program in Biosphere Sustainability Science [Master's / Doctorate]

<http://www.agr.hokudai.ac.jp/en/spgp/>

This program was created in April 2013 out of the previous Special Postgraduate Program in Bio-Systems Sustainability. It provides an opportunity to study a unique combination of such fields as food, health, and environment. The program aims to meet urgent needs for researching and developing methods for preserving and sustainably utilizing the Earth's limited resources to maintain our quality of life into the future.

##### Degrees Obtainable

Master (Bio-systems Sustainability, Agrobiology,  
Applied Bioscience, Environment Resources)  
Doctor of Philosophy (Bio-systems Sustainability, Agrobiology,  
Applied Bioscience, Environment Resources)

##### Scholarships / Financial Support

Program Specific	None
University Wide	MEXT *



#### ⑥ International Graduate Program: Training Program for Global Leaders in Life Sciences (IGP) [Master's / Doctorate]

<http://altair.sci.hokudai.ac.jp/grad/igpoverview/>



This graduate program aims to become a top-level education and research center for life sciences, based on a network of contacts with leading universities in Asia and elsewhere. IGP seeks to recruit excellent international students interested in the life sciences. Both Japanese and international students study under the same curriculum, which aims to produce leaders with global perspectives. From enrollment to graduation, English is the program's main language. Students

who wish to enter the Trans-disciplinary Life Science Course or Biosystems Science Course of the Graduate School of Life Science are eligible for this program.



##### Degrees Obtainable

Master of Life Science, Doctor of Philosophy Life Science

##### Scholarships / Financial Support

Program Specific	MEXT * (IGP Special Quota) (Available for students who enroll during 2013 fall – 2017 fall)
University Wide	MEXT *

## ⑦ English Engineering Education Program (e<sup>3</sup>) [Master's / Doctorate]

<http://www.eng.hokudai.ac.jp/e3/>



The e<sup>3</sup> program, established in 2000, allows students to benefit from the best Japanese technology and gives them access to cutting-edge knowledge and an international environment, helping them develop communication skills and cultural awareness, become flexible researchers and engineers in the diverse fields of science and technology, and graduate ready to face global challenges. Program extends to 12 divisions of the Graduate School of Engineering and covers a wide range of engineering fields. Scholarships are offered to qualified international students.



### Degrees Obtainable

Master of Engineering, Doctor of Philosophy (Engineering)

### Scholarships / Financial Support

Program Specific	MEXT * [University Recommendation: Special Program Slot] <Designated Scholarship Programs> MEXT * Indian Railways (Indian Railways professionals) Foreign Study Coordinator (regions with coordinator's offices) JICA ** Innovative Asia (leading universities in Asia) AUN/SEED-Net (member universities in ASEAN countries) ABE Initiative (54 African countries) Pacific-LEADS (14 countries in the South-Pacific region) Kizuna Program in Sustainable Resource Development (mining engineering)
University Wide	MEXT *
Financial Support	JASSO *** Honors Scholarship [Special Program Slot] Tuition pay-back for privately funded PhD students through employment as research assistants

## ⑧ Doctoral Program in Chemistry and Materials Science "Advanced Graduate School of Chemistry and Materials Science (AGS)" under the Graduate School of Chemical Sciences and Engineering (CSE) [Doctorate]

<http://www.eng.hokudai.ac.jp/ags/>

The AGS program comprises the major fields of chemistry and materials science, including recent advances in organic chemistry, physical chemistry, inorganic chemistry, organometallic chemistry, polymer chemistry, catalysis, materials chemistry, biochemistry, and chemical engineering. This program provides financial support to outstanding students so they can concentrate on their studies and research without worrying about tuition, living costs, and other expenses.



### Degrees Obtainable

Doctor of Philosophy

### Scholarships / Financial Support

Program Specific	MEXT * [University Recommendation: Special Program Slot]
University Wide	MEXT *
Financial Support	JASSO *** Honors Scholarship [Special Program Slot] Tuition pay-back for privately funded PhD students through employment as research assistants

\* MEXT : The Japanese Ministry of Education, Culture, Sports, Science and Technology Monbukagakusho

\*\* JICA : Japan International Cooperation Agency

\*\*\* JASSO : Japan Student Services Organization

### 3) Hokkaido Summer Institute

Hokkaido University launched the Hokkaido Summer Institute (HSI) in 2016. HSI is a program that brings together leading researchers with proven educational and research track records from around the world, and provides courses in collaboration with HU faculty members.

HSI also allows participants to expand their knowledge of subjects in cutting-edge fields of research at HU that previously were open only to students of the university. Program participants have an opportunity to attend classes that employ attractive educational techniques, such as field training in Hokkaido's extensive land resources and active learning activities, so they can develop into professionals capable of thriving on the world stage.

All instruction at HSI is in English. This provides international students with a stress-free learning environment without having to worry about language barriers, and also creates a special opportunity for Japanese students, who can audit classes taught by internationally acclaimed researchers. The university strongly hopes that HSI students will cultivate a better understanding of other cultures and improve their English-language proficiency and communication skills through exchanges with researchers and students from other countries. Off-campus events and field trips are also planned so participants can enjoy Hokkaido's beautiful summer.



HOKKAIDO  
SUMMER INSTITUTE

#### Program Details (Hokkaido Summer Institute 2017)

- **Period**

May 29-September 1, 2017

- **Credit**

Credit will be awarded upon completion.

- **Tuition fee**

14,800 yen per credit

Tuition fee will be waived for students who enroll in the program as exchange students from partner institutions with which HU has concluded a memorandum of understanding on mutual tuition waivers.

- **Courses**

Undergraduate : 14

Graduate : 83

- **Online Application**

February 1-28, 2017

<http://hokkaidosummerinstitute.oia.hokudai.ac.jp/>



## 4) International Student Support

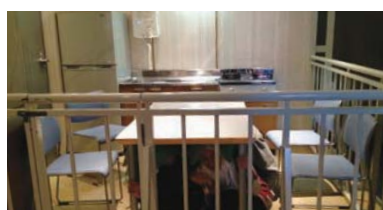


### ① Psychological Support

Living abroad can be very stressful. The Institute for International Collaboration (IIC) provides counseling services to international students and scholars. To meet the unique needs of international students, counseling sessions deal with a wide range of issues including psychological, interpersonal and cultural adjustment problems, career and academic concerns, and any other difficulties that international students may encounter. Psychiatric consultation is also available at the Health Care Center, assisted by interpretation from an ICC counselor.

### ② Daily Life

Student Supporters help newly arrived international students get settled, providing assistance in areas such as opening a bank account, moving into a dormitory, and obtaining national health insurance. Staff at the Support Desk answer any questions about day-to-day matters, and the IIC provides an orientation for international students immediately after their arrival in Japan that covers what to expect in daily life, and provides information to help students adjust to Japanese society. The IIC publishes handbooks for international students and scholars, and regularly imparts useful information concerning academic affairs, events, and workshops, such as through our mailing for international students, the HU International Students News Letter, which is published twice a month. We also assist international students and scholars with immigration-related paperwork such as applications for Certificates of Eligibility, re-entry permits, and visa extensions..



Earthquake room

### ③ Crisis Response

Since the March 2011 disaster in the Tohoku region, the IIC has recognized the importance of crisis response and disaster preparedness. The IIC conducts a tour to the local Disaster Prevention Center and holds regular drills at university dormitories. Information to help international students and researchers learn how to protect themselves and their families in case of a disaster is also available.

### ④ Dormitory and Guarantee System

Due to the recent and rapid increase in the number of international students at Hokkaido University, we have improved and expanded accommodation facilities for foreign students and researchers, both singles and families, to better acclimatize them to living in Japan so they can quickly devote themselves to their studies and research.

Data from May 2016 shows that Hokkaido University provided dormitory living to 44% of its international students (767 out of 1,785), a figure that is much higher than other national universities of a similar scale.

In addition, the IIC manages several international houses and offers a Guarantee System for international students who choose to rent accommodation privately.

Dormitories : [skshien@oia.hokudai.ac.jp](mailto:skshien@oia.hokudai.ac.jp)

Guaranty System for International Students' Rental Housing : [rss@oia.hokudai.ac.jp](mailto:rss@oia.hokudai.ac.jp)

<http://www.oia.hokudai.ac.jp/prospective-students/accommodation/>



### ⑤ Financial Aid

Hokkaido University offers two scholarships for qualified self-supported international students: the President's Fellowship, and the Special Grant Program for International Students.

The IIC also assists international students in applying for scholarships offered by various institutions and organizations. Additionally, the Seki Michiko Support Fund is available for international students who experience severe economic hardship due to unexpected or unfortunate events such as illness. Short-term loans are also available to international students to cover any unexpected emergencies.

### ⑥ Career Support

For those who plan to obtain employment in Japan after graduating, the Center for International Education and Research offers a class on business Japanese. The IIC also maintains a strong working alliance with the Career Center in planning career workshops and providing career-related information to international students. Additionally, the Career Support Network for international student support provides employment-related postings for registered students.

## ⑦ International Activities

### ● Holiday in Hidaka

HU international students go to Hidaka and participate in activities with the community. Held in July.



### ● Language Corner

Every Tuesday and Friday, HU students pair up to speak in a non-native language in the relaxed environment of Language Corner.



### ● Sawakai (Tea Party)

Sawakai offers international and Japanese HU students and researchers the opportunity to meet in an informal atmosphere and enjoy tea and sweets while discussing a monthly theme at the IIC.



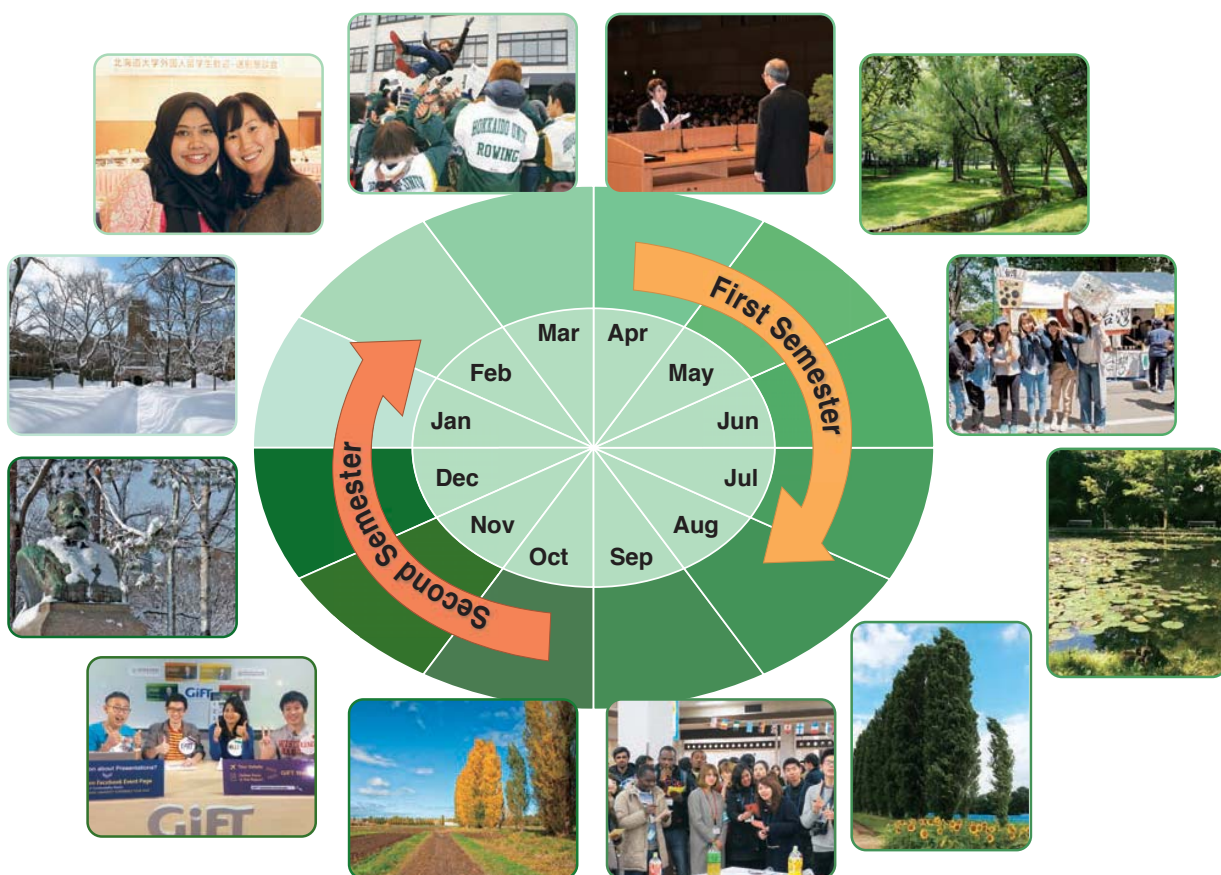
### ● Zen Zemi (Zen Seminar)

Offered twice a year in spring and autumn at Koozen Temple in Takikawa, Hokkaido, this increasingly popular program offers the opportunity for international and Japanese students to broaden their personal and intercultural understanding through group discussions, competitions, meditation sessions, and other cultural experiences.



For more information,  
contact : [event@oia.hokudai.ac.jp](mailto:event@oia.hokudai.ac.jp)

## ⑧ Calendar



## ⑨ Japanese Language Classes

### General Japanese Course

The Center for International Education and Research offers general Japanese classes for overseas students, as well as teaching and research staff, as outlined below:

#### Levels and subjects:

Students are free to choose from the following classes according to their needs; however, class level will be determined on the basis of a placement test and on previous Japanese studies.

Levels	Subjects		
Introductory	Grammar	Communication	Vocabulary / Kanji
Intermediate	Interaction (Basic Japanese)	Expression (Basic Japanese)	Comprehension (Basic Japanese )
	Interaction (Practical Japanese)	Expression (Practical Japanese)	Comprehension (Practical Japanese)
Advanced	Interaction	Expression	Comprehension
	Business Japanese	General	

#### Eligibility:

The course is open to overseas students enrolled at Hokkaido University with a student visa (research students / kenkyusei, graduate students, special auditors, and special research students) and overseas teaching and research staff. Auditors, credited auditors, and bachelor's degree program students are not eligible. Bachelor's degree program students are only eligible to take the Business Japanese class.

#### Applications and Placement Test Information:

All applicants must complete an online application through the website (<https://jpnccourse.oia.hokudai.ac.jp/entry/>). For more information, please visit the following links:

<http://www.oia.hokudai.ac.jp/current-students/japanese-language-support/> , <http://www.hokudai.ac.jp/php/jc/faq/> .

### Intensive Japanese Course

\*For Monbukagakusho Scholarship students and self-supported research students

This course is for students studying Japanese for the first time. The course aims to help students acquire the skills for basic daily communication.

#### Classes offered:

Elementary Grammar, Elementary Conversation, Elementary Kanji, Elementary Reading Comprehension, Elementary Writing, and Elementary Listening Comprehension and Pronunciation

Length of course: 16 weeks. Monday to Friday, 3 lessons per day. 1 lesson is 90 minutes.

#### Eligibility:

Students must meet one of the following requirements:

- Be a university-recommended Japanese Government Scholarship Student at the graduate level (kenkyusei)
- Be a research student enrolled as a self-supported international student at Hokkaido University with the intention of studying at the graduate level

\*This course is mainly for Japanese Government Scholarship Students at the graduate level (embassy-recommended) and those in teacher training programs. Therefore, additional students from the categories listed above will be accepted if there are vacancies.

### Co-learning in Multicultural Classrooms (CMC)

The Center for International Education and Research coordinates and mainly offers the Co-learning in Multicultural Classrooms (CMC) program for overseas students, as well as teaching and research staff, as outlined below:

#### Objective:

The CMC focuses on exchanges between Japanese students and international students via course topics aimed at increasing vocabulary and understanding while heightening skills that are necessary in the university environment. As such, the course does not emphasize learning the Japanese language as much as concentrate on learning from one another. To this end, active and independent involvement is expected.

#### Eligibility:

Students must meet the following requirements:

- 1) Be an international student enrolled at Hokkaido University with a student visa as a research student, graduate student, special auditor, or special research student, or be an international teaching or research staff.
- 2) Have a certain level of Japanese language ability.

#### Application and Placement Test Information:

All applicants must complete an online application through the website (<https://jpnccourse.oia.hokudai.ac.jp/entry/>). For more information, please visit the following links:

<http://www.oia.hokudai.ac.jp/current-students/japanese-language-support/> , <http://www.hokudai.ac.jp/php/jc/faq/> .

### General Education: Japanese Language and Japanese Affairs

\*For Monbukagakusho Scholarship Students, Foreign Government-Sponsored Students, Students on the Japan-Korea Joint Programme for Science and Engineering, and Self-Financed Students

This credited class is offered to international students enrolled in a HU faculty who want to raise their Japanese language ability beyond the university's Japanese language requirement.

## 5. International Exchange Programs

### 1) For Foreign Students

#### ① In English

#### Hokkaido University Short-Term Exchange Program (HUSTEP)

The Hokkaido University Short-Term Exchange Program (HUSTEP) is designed to provide students from partner universities with the opportunity to study for either six months or one academic year at Hokkaido University. Participants in this program take a wide variety of courses offered in English in the fields of culture and society, environment, and science and technology. In addition, participants for the full year can pursue independent study under the guidance of a faculty member. Students also have the chance to study the Japanese language. The program includes the opportunity to take part in numerous traditional and contemporary Japanese cultural activities. Students admitted to the program are eligible to apply for a scholarship.

[hustep@oia.hokudai.ac.jp](mailto:hustep@oia.hokudai.ac.jp)

<http://www.oia.hokudai.ac.jp/hustep>



#### ② In Japanese

#### Japanese Language and Culture Studies Program (JLCSP)

The Japanese Language and Culture Studies Program is a 'junior year abroad' type program for undergraduates majoring in Japanese language and culture that provide students with the opportunity to study for either six months from April to October \* or for one academic year from October every year. The program originated as a Japanese Ministry of Education, Culture, Sports, Science, and Technology (MEXT) scholarship program for Japanese studies.

This program is open to Hokkaido University's inter-university partners as well as MEXT scholarship students from around the world, and leads among Japanese language programs in Japan with its long history of catering to different skill levels from intermediate to advanced to meet a variety of needs. Participants are immersed in language, culture, and societal studies including business Japanese that serve to deepen their understanding of Japan and improve their Japanese proficiency to enable them to interact with Japanese speakers. The program also allows participants to make the most of their undergraduate years through an independent study component that aids in the achievement of each individual's academic goals.

\* Half-year course from October also available

[jlcsp@oia.hokudai.ac.jp](mailto:jlcsp@oia.hokudai.ac.jp)

<http://www.oia.hokudai.ac.jp/jlcsp>



### 2) For Domestic Students

#### Student Exchange Programs (with partner universities)

Students of Hokkaido University have the chance to study abroad where there is an agreement in place with a partner university, be it a university-wide or inter-departmental agreement. (In the case of inter-departmental agreements, the student must be enrolled in a department or faculty which has an agreement to be able to participate in the program.)

In these programs, the participant only has to pay student fees to Hokkaido University and there is no need to pay fees to the overseas host institution whilst abroad. In addition, any credits earned at the host institution may be transferable to the student's degree at Hokkaido University. For these programs, there are two types of scholarships available.

1 JASSO Student Exchange Support Scholarship (short-term)

2 Hokkaido University / Nitori Overseas Exchange Scholarship

## 6. International Symposia

Throughout the year, university hosts a wide variety of symposiums to allow our faculty and students to interact with our counterpart universities all over the world. This active involvement allows us to strengthen our academic ties and gives our students the opportunity to gain exposure in academia. Below are two examples of our international symposiums.

### Hokkaido University - Seoul National University Joint Symposium

Since 1998, Hokkaido University has held an annual joint symposium with Seoul National University on a rotating basis to commemorate the conclusion of an Inter-University Exchange Agreement in 1997.

### Hokkaido University - Finnish Universities Joint Symposium

This annual symposium began in 2011 and introduces the latest outcomes of joint research programs, as well as international programs to train young researchers on environmental and other issues that affect northern regions. It is also a forum for discussing the continuation of joint research programs and the feasibility of research plans.



## 7. International Programs for Domestic Students

### 1) Nitobe College

Nitobe College, a special education program for undergraduate students enrolled in our twelve undergraduate schools, was established in 2013. Only applicants with a high level of English ability are admitted to the program. Students take fifteen credits from the Nitobe College curriculum in addition to the standard university bachelor's degree. Students who complete the program receive a special diploma.

#### Objectives

To cultivate proud leaders who thrive in international society and possess the following skills: English proficiency as a global communication tool; team-working and problem-solving competency for the global era; and the ability to become a leader in the international community.

#### Overseas Study

The overseas study element is an integral part of the Nitobe experience, and Nitobe College students must spend one semester or multiple short-term programs studying abroad. For student exchange programs with partner universities and short-term programs, there are scholarships available exclusively for Nitobe College students.

•Hokkaido University Frontier Foundation, Nitobe College Overseas Study Scholarship

#### Nitobe Fellows

Nitobe Fellows are alumni of the university who have reached the top of their respective professions. They provide career support and advice to Nitobe College students in collaboration with the Hokkaido University Alumni Association.

<http://nitobe-college.academic.hokudai.ac.jp/en/>



#### Inazo Nitobe

The College is named after one of our most notable alumni, Inazo Nitobe, who was the author of the well-known book, *Bushido: the Soul of Japan*, and one of the first under-secretary generals of the League of Nations (the forerunner of the United Nations).

## 2) Nitobe School

The Nitobe School is a special graduate education program that was started in the 2015 fiscal year. The purpose of the program is to foster professionals who can foresee, find, and resolve a wide variety of issues that affect global society. The Nitobe School aims to foster persons who can contribute to the creation of new value to society, while also developing highly skilled professionals with the frontier spirit. Together with students of diverse nationalities, languages, and expertise, students will go thorough team-learning programs, strengthen their English proficiency, apply learning portfolios, and receive mentoring from graduates who are currently active in society to develop the “3+1” Competencies.

### The “3+1” Competencies Cultivated by the Nitobe School

- 1 Competency in Continuous Personal Development:**  
Competency in understanding one's abilities and continuous personal development
- 2 Competency in Team Organization and Management:**  
Competency in team building mutual trust and working in cooperation with others
- 3 Giving Back to Society:**  
Competency in contributing to society as a specialist
- 4 Professional Ethics:**  
Sense of ethics that enables impartial and fair decisions to be made as a professional



Class style centered on active learning based on team learning

## 3) Global Career Design (First Step Program)

Global Career Design, also known as the First Step Program (FSP) in the general education requirements, is a credited short-term study abroad program designed for freshman and sophomore students who have little or no study experience overseas. The program provides a wide range of support to its participants, such as holding classes before and after the study trip to better prepare them for the overseas study experience and to help them reflect on and share their experiences with their peers and instructors.

The two major components of the overseas program are visiting partner institutions and listening to talks from professionals. The former component allows participants to broaden their outlook of higher education as they attend lectures at Hokkaido University's partner universities. Participants can also hone their language, communication, and group-work skills through student exchange activities and presentations they give to their counterparts in English. The latter component helps participants gain an understanding of global networks and the international community, which enables them to get an early start to their global career planning.

Hokkaido University encourages our students to “be ambitious” and FSP supports this by offering programs to various countries in 2016-2017.



## 4) Short-Term Programs (Summer Programs / Spring Programs)

As the name suggests, students can use their summer or spring break to take part in these short-term programs hosted by some of our partner institutions.

In 2016, students went to the following countries and universities:

- |   |   |
|---|---|
| ■ <b>Australia</b> (University of New South Wales)  | ■ <b>Republic of Korea</b> (Chonbuk National University, Dong-eui University)                         |
| ■ <b>Canada</b> (University of British Columbia)  | ■ <b>Russia</b> (Lomonosov Moscow State University)   |
| ■ <b>China</b> (Peking University, Chinese University of Hong Kong, Beijing Language and Culture University, Shanghai University) | ■ <b>Spain</b> (University of Alcalá)   |
| ■ <b>Estonia</b> (University of Tartu)  | ■ <b>Taiwan</b> (National Taiwan University)  |
| ■ <b>Germany</b> (Ludwig-Maximilians-Universität München)   | ■ <b>U.K.</b> (University of Leeds)   |
| ■ <b>New Zealand</b> (The University of Auckland)   | ■ <b>U.S.A.</b> (University of Hawai'i at Manoa, Portland State University, Arizona State University) |

In these extremely enriching programs, students get to learn both language and culture in the country of their choice. Since 2010, the Spring and Summer programs have been part of the Foreign Language curriculum (Title: Short-Term Language Study Overseas). Students who complete this program can receive credits that count toward their Hokkaido University degree upon returning home. In addition, there are scholarships available and students can choose languages other than English, if so desired.

## 5) Overseas Short-Term Special Programs on Global Leadership

These programs, in collaboration with our sister universities and associated institutions, are designed to foster skills needed for future global leaders. Program objectives vary depending on the specialization, historical / cultural backgrounds, and availability of resources of each collaborative institution, but all students are challenged to fully experience the meaning of what a global community is by working to form contacts with local peers. Understanding and acquiring basic knowledge of population and community dynamics and of sustainable development are areas which we believe will prepare students to take part in global society. Although the programs are primarily designed with Nitobe College students in mind as part of their required overseas studies, other students are eligible to participate depending on availability.

Below is a partial list of our international locales.

- |  |   |
|--|---|
| 1 <b>Canada</b> (University of British Columbia)   | 6 <b>Switzerland</b> (University of Geneva)   |
| 2 <b>Finland</b> (University of Oulu, University of Turku)   | 7 <b>Taiwan</b> (Taipei Medical University)   |
| 3 <b>New Zealand</b> (The University of Auckland)  | 8 <b>U.K.</b> (University of Oxford)  |
| 4 <b>Russia</b> (Irkutsk State University, Far Eastern Federal University, North-Eastern Federal University) | 9 <b>U.S.A.</b> (University of Alaska, University of Washington, Oregon State University) |
| 5 <b>Sri Lanka</b> (University of Peradeniya)  |   |

## 8. Graduate Schools / Faculties / Schools

### 1) Graduate School of Letters / Faculty of Letters

Highly qualified faculty members of the Graduate School of Letters and the Faculty of Letters help students develop well-rounded characters, and use the wealth of their professional knowledge to assist students with their studies. Our mission is to assist graduates and undergraduates in developing holistic perspectives and acquiring the sound judgment necessary to understand the meaning of the physical world. In particular, the Faculty of Letters helps undergraduates acquire effective verbal skills, including foreign language skills, and learn to comprehensively understand human nature.

<http://www.let.hokudai.ac.jp/en/>

#### Graduate School

##### Philosophy and Cultural Sciences

- Philosophy
- Ethics and Applied Ethics
- Religious Studies and Indian Philosophy
- Theory and History of Arts

##### History and Area Studies

- Japanese History
- Asian History
- Occidental History
- History and Anthropology
- Northern Culture Studies
- Slavic Studies\*

##### Linguistics and Literature

- Linguistics and Western Languages
- Western Literature
- Linguistic Sciences
- Japanology
- Sinology
- Filmology and Cultural Studies of Representation

##### Human Sciences

- Psychology
- Behavioral Science
- Sociology
- Regional Sciences

#### Undergraduate School

##### Humanities and Human Sciences

- Philosophy and Cultural Sciences
- History and Anthropology
- Linguistics and Literature
- Human Sciences



### 2) Graduate School of Law / School of Law



The mission of the Graduate School of Law is to develop the next generation of talented legal educators and academics; to develop business persons with sophisticated professional knowledge; and to nurture professionals with sophisticated knowledge and broad perspectives. The mission of the School of Law is to help undergraduates acquire the basic skills necessary to deal with complex, diverse social issues and to help them develop leadership skills based on a well-rounded character and intellectual sensibility.

Both schools offer a broad and diverse range of curricula.

<http://www.juris.hokudai.ac.jp/en>

#### Graduate School

##### Law and Political Studies

- Modern Law
- Interdisciplinary Legal Studies
- Political Studies
- Advanced Institute for Law and Politics\*

##### Legal Practice

- Private Law
- Public Law

##### Attached Facilities

- The Advanced Institute for Law and Politics

#### Undergraduate School

##### Law

- Public Law
- Criminal Law
- Interdisciplinary Legal Studies
- Private Law
- Social Law
- Political Studies

\* indicates a cooperative program/chair \*\* indicates an endowed program/chair/laboratory \*\*\*indicates a collaborative program/chair/body

### 3) Graduate School of Economics and Business Administration / School of Economics and Business Administration

The mission of the Graduate School of Economics and Business Administration is to develop world-class scholars of economics and business administration and to nurture talented business professionals with extensive knowledge of economics and business administration, as well as of related sciences. The mission of the School of Economics and Business Administration is to help undergraduates develop the leadership skills necessary to achieve innovation and ingenuity with a sense of mission and passion, and to help them mature intellectually so they can use their professional knowledge and social ethics to deal with social issues. Both schools offer curricula that meet the needs of highly motivated students.

<http://www.econ.hokudai.ac.jp/en08/>

#### Graduate School

##### Modern Economics (Mgt)

- Economic Analysis
- Social and Historical Economics
- Economic Policy
- Management Analysis

##### Accounting

- Accounting

#### Undergraduate School

##### Economics

- Economic Theory
- Economic History
- Applied Economics

##### Business Administration

- Business Administration
- Management Information



### 4) Graduate School of Education / Faculty of Education / School of Education

The mission of the Graduate School of Education, the Faculty of Education, and the School of Education is to develop researchers who pursue practical studies to establish new education philosophies and systems and resolve wide-ranging educational issues; to develop education professionals with highly specialized academic and practical knowledge and skills; and to develop educators with well-rounded characters who can adopt innovative theories to effectively address issues concerning education.

[http://www.edu.hokudai.ac.jp/index\\_e.html](http://www.edu.hokudai.ac.jp/index_e.html)

#### Graduate School

##### Education

- Pedagogical Foundations of Education
- Life-Long Education
- Educational Social Sciences
- Educational Psychology
- Clinical Psychology
- Health Education
- Physical Education
- Multicultural Education

#### Undergraduate School

##### Education

- Social Sciences of Education
- Psychology of Education
- Pedagogical Foundations of Education
- Science of Health and Physical Education

#### Faculty (Research)

##### Education

- Social Sciences of Education
- Pedagogical Foundations of Education
- Psychology of Education
- Science of Health and Physical Education

##### Attached Facilities

- Research and Clinical Center for Child Development



## 5) Graduate School of International Media, Communication, and Tourism Studies / Research Faculty of Media and Communication

The mission of the Graduate School of International Media, Communication, and Tourism Studies and the Research Faculty of Media and Communication is to nurture researchers and business professionals who have the professional expertise in public relations, journalism, media culture, verbal communication, and tourism necessary to effectively address changes and issues in today's society and to become prominent players in local and international arenas.

<http://www.imc.hokudai.ac.jp/en/>

### Graduate School

#### International Media and Communication

- Public Communication
- Journalism
- International Public Relations
- Media and Culture
- Multimedia Studies
- Language and Communication
- Language Acquisition
- Japanese Linguistics
- International PR Strategies\*\*\*

#### Tourism Creation

- Tourism Creation
- Tourism and Culture
- Tourism Regional Management\*\*\*

### Faculty (Research)

#### Media and Communication

- Public Communication
- Journalism
- International Public Relations
- Media and Culture
- Multimedia Studies

- Language and Communication
- Language Acquisition
- International Regional Culture Studies
- Multicultural Education
- International PR Strategies\*\*\*

#### Modern Japanese Studies

- Modern Japanese Studies



## 6) Graduate School of Public Policy / Research Department of Public Policy

To meet the demand for experts who can make and implement public policies, the Graduate School of Public Policy aims to provide students with the skills necessary to become versatile public-policy experts. To achieve this objective, our distinguished faculty provides small-group education, and offers interdisciplinary educational programs on public policy through human, social, scientific, and technological studies. Students have opportunities to pursue careers as civil servants in national and local governments or as public policy professionals working in corporations, think tanks, and NPOs.

<http://www.hops.hokudai.ac.jp/home-e/entop.html>



### Graduate School

#### Public Policy

- Public Management
- International Relations
- Technology Policy

### Research Department

#### Public Policy

- Public Policy

#### Attached Facilities

- Public Policy Research Center

\* indicates a cooperative program/chair \*\* indicates an endowed program/chair/laboratory \*\*\*indicates a collaborative program/chair/body

## 7) Graduate School of Medicine / School of Medicine

The mission of the Graduate School of Medicine is to help graduate students cultivate professional ethics and well-rounded characters, and to help them master sophisticated medical knowledge and technical skills. The mission of the School of Medicine is to help undergraduates develop the professional ethics and well-rounded characters required to serve as medical professionals; to help them acquire sophisticated medical knowledge and skills and learn to continually improve themselves throughout their professional careers; and to help them learn to work with other professionals to provide advanced medical care as part of a team.

<http://www.med.hokudai.ac.jp/index-e.html>

### Graduate School

#### Medicine

- Biochemistry
- Anatomy
- Physiology
- Pharmacology
- Pathology
- Microbiology
- Social Medicine
- Internal Medicine
- Radiology and Nuclear Medicine
- Surgery
- Anesthesiology and Critical Care Medicine

- Reconstructive Surgery and Rehabilitation Medicine
- Reproductive and Developmental Medicine
- Sensory Organ Medicine
- Neurological Disorders
- Advanced Medical Sciences
- Immunology\*
- Pathological Oncology\*
- Molecular Imaging\*\*
- Chronomedicine\*\*
- Women's Health Educational System\*\*
- Translational Pathology\*\*

- Clinical Collaborative Departments\*\*\*
- Advanced Medicine for Spine and Spinal Cord Disorders\*\*
- Ocular Circulation and Metabolism\*\*
- Transplant Surgery\*\*
- Cancer Preventive Medicine\*\*
- Advanced Therapeutic Research for Sports Medicine\*\*
- Child and Adolescent Psychiatry\*\*

#### Attached Facilities

- Animal Experimentation Facility



### Undergraduate School

#### Medicine

- Introduction to Medicine
- History of Medicine
- Human Genetics
- Anatomy and Embryology
- Physiology
- Biochemistry
- Pharmacology
- Pathology
- Microbiology

- Forensic Medicine and Medical Informatics
- Public Health and Hygiene
- Internal Medicine
- Surgery
- Reproductive Health and Surgery
- Developmental Medicine
- Psychiatry and Neurology
- Sensory Organ Medicine
- Reconstructive Surgery and Rehabilitation
- Radiology and Nuclear Medicine
- Rehabilitation and Physical Medicine

- Anesthesiology and Critical Care Medicine

#### Health Sciences

- Nursing
- Radiological Technology
- Medical Technology
- Physical Therapy
- Occupational Therapy

#### Attached Facilities

- Hokkaido University Hospital (shared facility with the School of Dental Medicine)



## 8) Graduate School of Dental Medicine / School of Dental Medicine

Based on the belief that proper oral care is essential for people to maintain good health, the mission of the Graduate School of Dental Medicine and the School of Dental Medicine is to assist undergraduates and graduates in acquiring professional knowledge and technical skills in dentistry and dental care to help students become dentists and dental educators and scholars with professional ethics, well-rounded characters, and inquisitive minds. The School of Dental Medicine offers distinctive education programs such as small-group educational exercises and early hands-on clinical training to help students become well-educated and intelligent dentists. We also provide research-based training intended to help students improve their problem-solving skills.

<http://www.den.hokudai.ac.jp/contents/en/>



### Graduate School

#### Oral Medical Science

- Oral Functional Science
- Oral Pathobiological Science
- Geriatric Oral Science\*\*\*
- Oral Health Science
- Stomatognathics\*

### Undergraduate School

#### Dentistry

- Oral Anatomy, Histology and Microbiology
- Oral Radiography and Medicine
- Oral Physiology, Biochemistry and Pharmacology
- Oral Anesthesia and Oral-Maxillofacial Surgery
- Oral Pathology
- Pedodontics, Orthodontics and Oral Gerodontology
- Operative Dentistry and Periodontology
- Preventive Dentistry
- Biomaterials and Prosthodontics

#### Attached Facilities

- Hokkaido University Hospital (shared facility with the School of Medicine)

\* indicates a cooperative program/chair \*\* indicates an endowed program/chair/laboratory \*\*\*indicates a collaborative program/chair/body

## 9) Graduate School of Veterinary Medicine / School of Veterinary Medicine

The mission of the Graduate School of Veterinary Medicine and the School of Veterinary Medicine is to help students become veterinarians with creative minds and well-rounded characters who understand what is expected of veterinary medicine in society and have a scientific and analytic frame of mind. We also aim to cultivate veterinary experts who use sophisticated knowledge and technical skills to meet social needs in Japan and abroad. We offer small-group education programs so students can acquire a broad range of professional knowledge and skills to deal with animal diseases.

<http://www.vetmed.hokudai.ac.jp/en/>

### Graduate School

#### Veterinary Medicine

- Biomedical Sciences
- Disease Control
- Veterinary Clinical Sciences
- Environmental Veterinary Sciences
- Applied Veterinary Sciences
- Zoonosis Control\*

#### Attached Facilities

- Hokkaido University
- Veterinary Teaching Hospital



### Undergraduate School

#### Cooperative Veterinary Education Program

- Basic Veterinary Sciences
- Pathobiological Veterinary Sciences
- Applied Veterinary Sciences
- Veterinary Clinical Medicine



## 10) Faculty of Pharmaceutical Sciences / School of Pharmaceutical Sciences and Pharmacy

The mission of the Faculty of Pharmaceutical Sciences and the School of Pharmaceutical Sciences and Pharmacy is to help students become researchers and pharmacists capable of discovering groundbreaking medicines and clinical applications. We offer education and research programs on pharmaceutical sciences—comprising foundations of pharmacy, life sciences, molecular pharmaceutical sciences, and biopharmaceutical sciences.

<http://www.pharm.hokudai.ac.jp/en/index.php>

### Undergraduate School

#### Pharmaceutical Sciences

- Pharmaceutical Sciences Stream

#### Pharmacy

- Pharmacy Stream

#### Attached Facilities

- Experimental Station for Medical Plant Studies

### Faculty (Research)

#### Molecular Pharmaceutical Sciences

- Molecular and Cellular Biological Sciences
- Chemistry and Medicinal Chemistry

#### Biopharmaceutical Sciences and Pharmacy

- Biopharmaceutical Sciences and Pharmacy



\* indicates a cooperative program/chair \*\* indicates an endowed program/chair/laboratory \*\*\*indicates a collaborative program/chair/body

## 11) Graduate School of Health Sciences / Faculty of Health Sciences

The mission of the Graduate School of Health Sciences and the Faculty of Health Sciences is to develop advanced medical professionals who use leading-edge knowledge and technical skills to meet society's needs for advanced medical care and play a prominent role in the next generation of health sciences, and to develop researchers who can play a leading role in the global arena of health-science research beyond their fields of specialty.

<http://www.hs.hokudai.ac.jp/e/>

### Graduate School

#### Health Sciences

- Health Sciences
- Nursing

### Faculty (Research)

#### Health Sciences

- Fundamental Nursing
- Comprehensive Development Nursing
- Biomedical Science and Engineering
- Medical Laboratory Science
- Rehabilitation Science
- Functioning and Disability
- Health Sciences and Technology
- Food and Nutrition for Health Promotion (Watanabe Oyster)\*\*
- Biological Response and Regulation\*\*



## 12) Graduate School of Information Science and Technology

The mission of the Graduate School of Information Science and Technology is to contribute to the evolution of a highly sophisticated information society, which will lead to the emergence of a knowledge-based society. We support graduate students in studying the history of information science and technology theory, and in pursuing new theories so they can develop into IT engineers with a broad range of knowledge and international perspective. We also aim to nurture IT researchers capable of using their creativity to conduct research and develop projects on their own.

<http://www.ist.hokudai.ac.jp/eng/>

### Graduate School

#### Computer Science and Information Technology

- Synergetic Information Engineering
- Knowledge Software Science
- Mathematical Science
- Large-Scale Information Systems\*

#### Electronics for Informatics

- Integrated Systems Engineering
- Advanced Electronics
- Quantum Electronics and Informatics\*

#### Bioengineering and Bioinformatics

- Bioinformatics
- Bioengineering
- Advanced Biofunctional Engineering\*
- Advanced Medical Engineering\*\*\*

#### Media and Network Technologies

- Information Media Science and Technology
- Information Communication Systems
- Ubiquitous Network\*\*\*
- Media Network Sociology\*\*\*

#### System Science and Informatics

- System Creation
- System Synthesis
- Informatics for System Evolution\*\*\*
- Informatics for Remote Sensing\*\*\*
- Informatics for Digital Human\*\*\*



\* indicates a cooperative program/chair \*\* indicates an endowed program/chair/laboratory \*\*\*indicates a collaborative program/chair/body

### 13) Graduate School of Fisheries Sciences / Faculty of Fisheries Sciences / School of Fisheries Sciences

The mission of the Graduate School of Fisheries Sciences, the Faculty of Fisheries Sciences, and the School of Fisheries Sciences is to comprehensively research the sustainable reproduction and efficient use of marine and aquatic resources, which are the shared property of humanity, and to delve into the basic and advanced aspects of preserving the marine ecosystem to ensure the sustainable use of marine resources. We aim to help students develop a creative and positive frame of mind, so they can study issues related to the global environment, natural resources, and food, all of which affect the international community, local societies, and business circles.

[http://www2.fish.hokudai.ac.jp/modules/top\\_en/](http://www2.fish.hokudai.ac.jp/modules/top_en/)

#### Graduate School

##### Marine Bioresource and Environmental Science

- Marine Biology and Biodiversity
- Marine Bioresource Science
- Marine Environmental Science
- Marine Environment and Resource Sensing
- Fisheries Engineering
- Interdisciplinary Sustainability Studies

##### Marine Life Science

- Aquaculture Biology
- Aquaculture Genetics and Genomics
- Marine Biotechnology and Microbiology
- Marine Bioresources Chemistry
- Marine Food Science and Technology
- Marine Chemical Resource Development

#### Undergraduate School

##### Marine Biology

- Marine Biology Stream

##### Applied Marine Science

- Applied Marine Science Stream

##### Aquaculture Life Science

- Aquaculture Life Science Stream

##### Marine Bioresources Chemistry

- Marine Bioresources Chemistry Stream

##### Attached Facilities (training ships)

- Oshoro-maru
- Ushio-maru

#### Faculty (Research)

##### Marine Bioresource and Environmental Science

- Marine Biology and Biodiversity
- Marine Bioresource Science
- Marine Environmental Science
- Marine Environment and Resource Sensing
- Fisheries Engineering
- Humans and the Ocean

##### Marine Life Science

- Aquaculture Biology
- Aquaculture Genetics and Genomics
- Marine Biotechnology and Microbiology
- Marine Bioresources Chemistry
- Marine Food Science and Technology
- Marine Chemical Resource Development



## 14) Graduate School of Environmental Science / Faculty of Environmental Earth Science

The mission of the Graduate School of Environmental Science and the Faculty of Environmental Earth Science is to assist students in studying earth science, biology, and material science, and encourage them to use what they learn in these fields to research and find solutions to global environmental issues. We also aim to nurture researchers and professionals ready to tackle pressing global environmental issues. We accept students with outstanding scholastic abilities and take an interdisciplinary approach to environmental science education. As a leader in environmental education, we offer diverse curricula including general theory, foundation theory, advanced study, school-wide interdisciplinary courses, and Antarctic science.

[http://www.ees.hokudai.ac.jp/index.php?easiestml\\_lang=en](http://www.ees.hokudai.ac.jp/index.php?easiestml_lang=en)

### Graduate School

#### Environmental Science Development

- Human and Ecological Systems
- Environmental Adaptation Science
- Practical Science for Environment
- Global Environmental Management

#### Earth System Science

- Geochemistry
- Atmosphere-Ocean and Climate Dynamics
- Cryosphere Science

#### Biosphere Science

- Ecosystem Biology
- Ecological Genetics
- Molecular Biology
- Plant Ecology
- Animal Ecology
- Marine Biogeochemistry, Physics and Biology
- Aquatic Biology
- Forest Conservation
- Agro-Ecosystem Science

#### Environmental Materials Science

- Biomaterials Chemistry
- Environmental Nano-Materials
- Molecular Photonics and Electronic Science
- Environmental Catalytic Chemistry

### Faculty (Research)

#### Integrated Environmental Science

- Conservation on Natural Environments
- Environmental Geography
- Environmental Adaptation Science
- Practical and Earth Sciences for Environment

#### Earth System Science

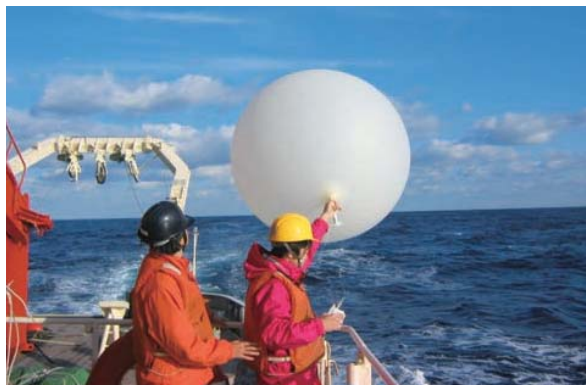
- Biogeosystem Science
- Marine and Atmospheric Geochemistry
- Atmosphere-Ocean Physics
- Climate Dynamics

#### Environmental Biology

- Terrestrial Ecology
- Conservation Ecology
- Ecological Genetics
- Environmental Molecular Biology

#### Materials Science

- Biomaterials Chemistry
- Functional Materials Chemistry
- Molecular Materials Chemistry



## 15) Graduate School of Science / Faculty of Science / School of Science

Humans have long been fascinated by how nature has evolved, and have always wanted to know how it works.

The Graduate School of Science, the Faculty of Science, and the School of Science are dedicated to academic pursuits, motivated by a desire to learn more about nature. Our mission is to help students develop the following academic attributes:

1. The ability to understand the true nature of an event and identify laws that govern it (the ability to turn an idea into a universal theory and prove its validity, and the ability to model things and describe the model in a logical and sensible manner).
2. The ability to describe the outcome of academic research in a logical manner, use logic to convince others, and exercise leadership in making a social contribution.

<http://www.sci.hokudai.ac.jp/english/index.html> (School)

<http://www.sci.hokudai.ac.jp/graduateschool/en> (Graduate School)

<http://www.sci.hokudai.ac.jp/faculty/en> (Faculty)

### Graduate School

#### Mathematics

- Mathematics

#### Condensed Matter Physics

- Quantum Solid State Physics
- Condensed Matter Physics

#### Cosmosciences

- Fundamental Physics
- Cosmos and Planets

#### Natural History Sciences

- Earth and Planetary Dynamics

- Earth and Planetary System Science
- Seismology and Volcanology
- Biodiversity
- Science Communication

### Undergraduate School

#### Mathematics

- Mathematics Stream

#### Physics

- Physics Stream

#### Chemistry

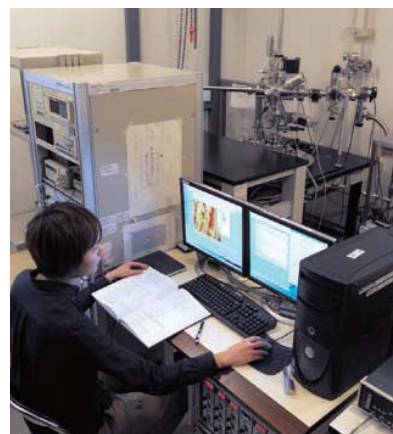
- Chemistry Stream

#### Biological Sciences

- Biology
- Macromolecular Functions

#### Earth and Planetary Sciences

- Earth and Planetary Sciences Stream



### Faculty (Research)

#### Mathematics

- Mathematics

#### Chemistry

- Physical Chemistry
- Inorganic and Analytical Chemistry
- Organic and Biological Chemistry

#### Physics

- Quantum Physics
- Electronic Condensed Matter Physics
- Condensed Matter Physics
- Nonlinear Physics

#### Earth and Planetary Sciences

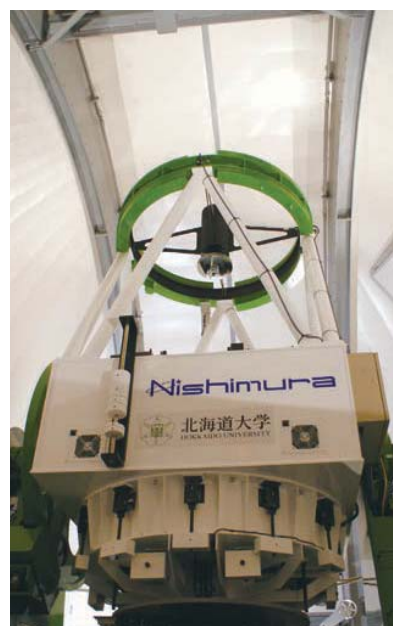
- Cosmosciences
- Earth and Planetary Dynamics
- Earth and Planetary System Science

#### Biological Sciences

- Cell Structure and Function
- Behavioral Neurobiology
- Reproductive and Developmental Biology
- Biodiversity

#### Attached Facilities

- Institute of Seismology and Volcanology
- Genome Dynamics Research Center
- Nuclear Reaction Data Center



## 16) Graduate School of Agriculture / Research Faculty of Agriculture / School of Agriculture

The mission of the Research Faculty of Agriculture, the Graduate School of Agriculture, and the School of Agriculture is to conduct research to create and rebuild a new system of agriculture that deals with the wide range of food issues facing humankind. Our education programs cover areas related to resolving pressing issues to ensure the sustainable existence of humankind, with a goal of nurturing researchers and talented business professionals capable of making sound judgments from regional and global perspectives.

<http://www.agr.hokudai.ac.jp/en/>

### Graduate School

#### Bio-Systems Sustainability

- Agricultural and Resource Economics
- Safety and Function of Food
- Biomass Conversion
- Sustainable Agro-Science

#### Agrobiological

- Applied Molecular Biology
- Plant Breeding Science
- Botany and Agronomy
- Animal Production

#### Applied Bioscience

- Food Science
- Biomolecular Chemistry

#### Environmental Resources

- Ecology and Systematics
- Regional Environment
- Science of Forest Resources
- Integrated Forest-Landscape Management
- Bioproduction Engineering

### Undergraduate School

#### Agrobiological and Bioresources

- Agrobiological and Bioresources Stream

#### Applied Bioscience

- Applied Bioscience Stream

#### Bioscience and Chemistry

- Bioscience and Chemistry Stream

#### Forest Science

- Forest Science Stream

#### Animal Science

- Animal Science Stream

#### Bioresource and Environmental Engineering

- Bioresource and Environmental Engineering Stream

#### Agricultural Economics

- Agricultural Economics Stream

### Research Faculty

#### Fundamental AgriScience Research

- Agrobiological and Bioresources
- Applied Bioscience
- Forest Science
- Animal Science
- Bioresource and Environmental Engineering

#### Research Innovation and Cooperation

- Cooperative Promotion Group
- Integrated Research Group



## 17) Graduate School of Life Science

Significant progress has been made in both basic and applied research into life science using genetic information obtained from a variety of animals, including the human genome. The Graduate School of Life Science offers innovative graduate programs intended to help students acquire the knowledge and skills necessary to make meaningful contributions to the continued development of life science.

<http://www.lfsci.hokudai.ac.jp/en/>

### Graduate School

#### Life Sciences

- Transdisciplinary Life Science
- Biosystems Science
- Biomedical and Pharmaceutical Science

#### Clinical Pharmacy

- Clinical Pharmacy



## 18) Faculty of Advanced Life Science

Life Science covers a diverse range of disciplines from basic to applied research. The Faculty of Advanced Life Science has assembled a strong team of professionals with expertise in biology, physics, chemistry, medicine, and pharmaceutical sciences who are striving to create a novel and transdisciplinary approach to life science. Furthermore, our auxiliary facility, the Frontier Research Center for Advanced Material and Life Science (Frontier-ALMS), advances collaborative engagements between industry and academia. It provides world-class teaching staff from around the world in collaboration with Global Station for Soft Matter, GI-CoRE, Hokkaido University. It also maintains and enhances its research and develops infrastructures to share with the public. Through these programs and projects, we aim to foster researchers for the next generation.

<http://altair.sci.hokudai.ac.jp/advlfsci/en/>

### Faculty (Research)

#### Advanced Transdisciplinary Sciences

- X-ray Structural Biology
- Protein Science
- Soft & Wet Matter Science
- Tissue Organization Science
- Cellular Dynamics Science
- Drug Discovery Research
- Chemical Biology
- Molecular Delivery Science\*\*\*\*

#### Functional Life Sciences

- Cell Biological Science
- Molecular and Cellular Biology
- Biological Information Analysis Science
- Functional Cellular Science
- Glyco-Signal Biology
- Embryonic and Genetic Engineering

#### Attached Facilities

- The Frontier Research Center for Advanced Material and Life Science



\*\*\*\* indicates a collaborative branch

## 19) Graduate School of Engineering / Faculty of Engineering / School of Engineering

The mission of the Graduate School of Engineering, the Faculty of Engineering, and the School of Engineering is to transfer our legacy of academic accomplishments to our students, so they can master and advance basic and professional disciplines in engineering. We also aim to help students acquire the wide-ranging knowledge, sound judgment, and practical skills necessary to deal with globalization, and advance science and technology.

<http://www.eng.hokudai.ac.jp/english/>

### Graduate School

#### Applied Physics

- Quantum Matter Physics
- Complex Material Physics
- Optical Science and Technology
- Solid State Physics and Engineering

#### Materials Science and Engineering

- Ecological Materials
- Materials Design
- Energy Materials
- Energy Conversion Materials
- Ironmaking and Steelmaking\*\*\*
- Frontier Energy Engineering\*\*\*

#### Mechanical and Space Engineering

- Space Systems Engineering
- Materials and Fluid Mechanics
- Space Exploration Engineering\*\*\*

#### Human Mechanical Systems and Design

- Biomechanics and Robotics
- Micromechanical Systems
- Biomedical Simulation\*\*\*

#### Energy and Environmental Systems

- Nuclear and Environmental Systems
- Applied Energy Systems

#### Quantum Science and Engineering

- Applied Quantum Beam Engineering
- Plasma Science and Engineering
- Nanomaterials Science
- Materials Structure Science\*\*\*
- Fusion Science\*\*\*

#### Field Engineering for the Environment

- Geotechnical and Material Engineering for Disaster Prevention
- Hydraulic and Aquatic Environment Engineering

#### Engineering and Policy for Sustainable Environment

- Engineering for Sustainable Infrastructure System
- Policy for Engineering and Environment

#### Architectural and Structural Design

- Structural and Urban Safety Design
- Human Settlement Design

#### Human Environmental Systems

- Planning and Performances for Built Environments
- Building Engineering and Planning

#### Environmental Engineering

- Water Metabolic System
- Environmental Management Systems

#### Sustainable Resources Engineering

- Resources Engineering
- Geoenvironmental Engineering

### Undergraduate School

#### Applied Science and Engineering

- Applied Physics and Engineering
- Applied Chemistry
- Materials Engineering

#### Electronics and Information Engineering

- Computer Science and Information Technology
- Electrical and Electronic Engineering
- Bioengineering and Bioinformatics
- Media and Network Technologies
- Systems, Control and Electrical Engineering

#### Mechanical and Intelligent System Engineering

- Mechanics and Information
- Mechanical Systems

#### Socio-Environmental Engineering

- Civil Engineering
- Public Policy and Engineering
- Architecture
- Environmental Engineering
- Sustainable Resources Engineering



\*\*\* indicates a collaborative program/chair/body

## Faculty (Research)

### Applied Physics

- Quantum Matter Physics
- Complex Material Physics
- Optical Science and Technology
- Solid State Physics and Engineering

### Applied Chemistry

- Industrial Organic Chemistry
- Chemical Engineering
- Biotechnology
- Chemistry of Functional Molecules
- Functional Materials Chemistry
- Inorganic Materials Chemistry

### Materials Science and Engineering

- Ecological Materials
- Materials Design
- Energy Materials

### Mechanical and Space Engineering

- Space Systems Engineering
- Materials and Fluid Mechanics

### Human Mechanical Systems and Design

- Biomechanics and Robotics
- Micromechanical Systems

### Energy and Environmental Systems

- Nuclear and Environmental Systems
- Applied Energy Systems

### Quantum Science and Engineering

- Applied Quantum Beam Engineering
- Plasma Science and Engineering

### Field Engineering for the Environment

- Hydraulic and Aquatic Environment Engineering
- Geotechnical and Material Engineering for Disaster Prevention

### Engineering and Policy for Sustainable Environment

- Engineering for Sustainable Infrastructure System
- Policy for Engineering and Environment

### Architectural and Structural Design

- Structural and Urban Safety Design
- Human Settlement Design

### Human Environmental Systems

- Planning and Performances of Built Environment
- Building Engineering and Planning

### Environmental Engineering

- Water Metabolic Systems
- Environmental Management System
- Material Cycle and Energy Systems\*\*

### Sustainable Resources Engineering

- Resources Engineering
- Geoenvironmental Engineering

### Attached Facilities

- Center for Advanced Research of Energy and Materials

## 20) Graduate School of Chemical Sciences and Engineering

The mission of the Graduate School of Chemical Sciences and Engineering is to develop chemical engineers and researchers capable of flexibly meeting the needs of society. To achieve this mission, we offer students a unified education program on fundamental chemistry, and faculty members from science and engineering departments work together to provide expansive education programs that meet each student's career goals, be it as an engineer or researcher in a corporate environment, a researcher at a public institution, or an educator in higher education.

<http://www.cse.hokudai.ac.jp/english/>

## Graduate School

### Chemical Sciences and Engineering

- Microscopic Chemical Analyses
- Fine Chemical Reactions
- Catalytic Reactions
- Chemical Process Engineering
- Molecular Materials Chemistry
- Inorganic Materials Chemistry
- Frontier Materials Chemistry
- Functional Materials Chemistry
- Biomolecular Chemistry
- Biofunctional Chemistry
- Cell Engineering
- Molecular Medical Biochemistry



\*\* indicates an endowed program/chair/laboratory

## 9. Research Institutes

### 1) Institute of Low Temperature Science

The Institute of Low Temperature Science (ILTS) was founded in 1941 as the first research institute in Japan to promote interdisciplinary studies on various natural phenomena occurring in the cryosphere. The cryosphere is of special importance to the climate and is changing rapidly. It is thus essential that we have the latest and best information available regarding ongoing changes in the cryosphere.

#### Water and Material Cycles

- Ocean and Sea Ice Dynamics
- Atmosphere-Ocean Interaction
- Atmospheric Chemistry and Organic Geochemistry
- Land-Atmosphere Interaction
- Meteorology / Hydrology
- Isotope Physiology, Ecology, and Geochemistry

#### Frontier Ice and Snow Science

- Glacier and Ice Sheet Research
- Phase Transition Dynamics
- Ice and Planetary Sciences
- Astrophysical Chemistry

#### Environmental Biology

- Cold Region Plant Ecology and Physiology
- Plant Adaptation Biology
- Microbial Ecology
- Biodiversity
- Biochemistry

#### Attached Facilities

- Pan-Okhotsk Research Center:
- Climate Change Research
- Land-Ocean System
- International Research Promotion Office

<http://www.lowtem.hokudai.ac.jp>



### 2) Research Institute for Electronic Science

The Research Institute for Electronic Science (RIES) was established in 1992. Our mission is to develop new interdisciplinary research fields between photonics and optical sciences, material and molecular sciences, and biology and life sciences. The Institute also focuses on mathematics and nanotechnology as requisite sciences to accomplish our mission.

#### Photonics and Optical Science

- Photo-System Physics
- Nanomaterials and Nanoscopy
- Coherent X-ray Optics

#### Material and Molecular Sciences

- Molecular Photonics
- Smart Molecules
- Nanostructure Physics
- Functional Thin Film Materials

#### Biology and Life Sciences

- Molecular and Cellular Biophysics
- Molecular Devices
- Complex Systems Research

#### Cooperative Research

- RIKEN Alliance
- Social Cooperation Advisory
- Alliance Collaborative Research Laboratory
- New-paradigm Computing

#### Attached Facilities

- Green Nanotechnology Research Center:
- Green Photonics
- Nanostructured Functional Materials
- Nanophotonics
- Functional Nanomolecular Materials
- Research Center of Mathematics for Social Creativity:
- Mathematical Modeling
- Molecule & Life Nonlinear Sciences
- Mathematical and Physical Ethology
- Experimental Mathematics

#### Research Support Department

- Nikon Imaging Center
- Promotion Office for International Alliances
- Promotion Office for Nanotechnology Collaboration
- Promotion Office of Integrative Mathematics

<http://www.es.hokudai.ac.jp>



### 3) Institute for Genetic Medicine

The Institute for Genetic Medicine was established in April 2000 through a merger of the Institute of Immunological Science and the Cancer Institute of the School of Medicine. Together, these institutes have ninety years of experience to tap into to achieve the institutes's mission to elucidate the molecular basis of various illnesses, including cancer, immune diseases, infectious diseases, and cardiovascular diseases, and to provide methods for diagnosing and treating these illnesses.

#### Molecular Pathogenesis

- RNA Biofunction
- Stem Cell Biology
- Signaling in Cancer and Immunology
- Molecular Neuroimmunology

#### Pathophysiology

- Cancer Biology
- Molecular Virology
- Molecular Oncology
- Immunobiology

#### Disease Control

- Disease Model Innovation
- Functional Immunology
- Molecular Interaction

#### Attached Facilities

- Laboratory for Animal Experiments
- Center for Infection-Associated Cancer

#### Endowed Department

- Probiotics Immunology

<http://www.igm.hokudai.ac.jp>



### 4) Institute for Catalysis

Catalysis science is in high demand for building a sustainable society through timely responses to ever-increasing needs for environmental conservation, resources, and energy. The Institute for Catalysis was launched based on the success of the Catalysis Research Center, and our mission is to fulfill this demand and become a global center for catalysis science research. We promote high-level education and joint research to attain our goals.

#### Department of Fundamental Research

- Catalyst Surface Research Division
- Catalysis Theory Research Division
- Surface Molecular Science Research Division
- Catalytic Transformation Research Division
- Catalyst Material Research Division
- Photocatalysis Research Division
- Molecular Catalyst Research Division
- Macromolecular Science Research Division

#### Department of Practical Applications

- Research and Development Division

#### Department of Targeted Research

- Central Research Section :
  - Research Cluster for Sustainable Catalyst
- Extensive Research Section :
  - Research Cluster of Well-Defined Surface Nanostructures
  - Research Cluster of Bio-Interfaces
  - Research Cluster for Plasmonic Photocatalysis
  - Research Cluster for Computer Simulation of Interfaces
  - Research Cluster for Acid-Base Catalysis
  - Research Cluster for Functional Alloy Catalyst

#### Attached Facilities

- Catalysis Collaborative Research Center

<http://www.cat.hokudai.ac.jp>



## 10. Research Centers

### 1) Slavic-Eurasian Research Center

The Slavic-Eurasian Research Center (SRC) at Hokkaido University dates back to the early 1950s, when the need for independent Japanese research and evaluation of the wider world was influenced by new techniques called “Area Studies” coming from the United States. The center engages in interdisciplinary regional study through the cooperative expertise of the humanities and social sciences. Team work continues to be the SRC’s hallmark. As a designated “national joint-use facility,” the SRC works with Japanese scholars elsewhere and the larger global community both to keep Japan informed of what is happening in the ever-changing Slavic-Eurasian region and to disseminate the research achievements of Japanese specialists. Maintaining the best library in Asia on Slavic-Eurasian studies lies at the core of the SRC mission, attracting scholars from other Asian countries and beyond. To improve scholarly communication and education, the SRC has concluded bilateral agreements with dozens of institutes and universities throughout the region, as well as such area studies heavyweights as Harvard, Oxford, Seoul National University, and the Chinese Academy of Sciences

- Russian Studies
- Siberian and Far Eastern Studies
- Central Eurasian Studies
- East European Studies
- Comparative Studies

<http://src-h.slav.hokudai.ac.jp>



From the Slavic collection



An international symposium

### 2) Information Initiative Center

The Information Initiative Center was established in April 2003 to promote advanced research into the development of information and communications technology (ICT), as well as to help the university construct and maintain its ICT infrastructure. The center endeavors to promote educational research utilizing ICT and to support the university in carrying out its curriculum based on these developments. In addition to providing foundational support to the university, the center also plays an important role as a resource center for nationwide ICT collaboration in supercomputing and cloud computing.

#### Research Department

- Super Computing
- Information Networks
- Digital Contents
- Media Education
- System Design
- Cyber Security

#### Cyber Security Center

<http://www.iic.hokudai.ac.jp>



### 3) Research Center for Zoonosis Control

To establish effective strategies for the control of zoonoses, the Research Center for Zoonosis Control conducts global surveillance to identify the natural host animals and transmission routes of zoonotic pathogens. Collected materials are used for basic research aiming to reveal molecular determinants of the pathogenicity and host range of infective agents. Research materials and outcomes are stored in a database and shared as biological resources for the development of diagnostic tools and vaccines. In addition, the center handles the diagnosis of field materials collected in other countries. Lectures and training courses are provided to foster “Zoonosis Control Experts” who are involved in implementing zoonosis control in the field. In 2011, the World Health Organization designated the Hokkaido University Research Center for Zoonosis Control as a WHO Collaborating Centre for Zoonoses Control.

#### Research Divisions

- Division of Global Epidemiology
- Division of Molecular Pathobiology
- Division of Bioresources
- Division of Collaboration and Education
- Division of Bioinformatics
- Division of Infection and Immunity

#### Units and Laboratories

- Unit of Risk Analysis and Management
- Laboratory for Biologics Development
- Unit of International Cooperation

#### Overseas Center

Hokudai Center for Zoonosis Control  
in Zambia

<http://www.czc.hokudai.ac.jp/en/index.html>



# 11. Joint-Use Facilities

## 1) Research Centers



### ① Central Institute for Isotope Science

Provides facilities for educational training and research on radioisotope use, supervises their use in the university, and conducts research and development on isotope science.

[http://www.hokudai.ac.jp/radiois/index\\_eng.html](http://www.hokudai.ac.jp/radiois/index_eng.html)



### ② Research Center for Integrated Quantum Electronics

Promotes research on the creation of novel semiconductor nanostructures, into the scientific principles governing novel electronic materials, and on novel devices and circuits for energy production and saving. Encourages transfers of innovative technologies to industry through R&D collaboration.

<http://www.rciqe.hokudai.ac.jp/en/>



### ③ Field Science Center for Northern Biosphere

Conducts comprehensive research on the Northern Biosphere based on field science, and provides educational and research support.

[https://www.fsc.hokudai.ac.jp/home\\_en/](https://www.fsc.hokudai.ac.jp/home_en/)



### ④ Center for Advanced Tourism Studies

Conducts advanced research on tourism innovation and collaboration, and also provides facilities for the promotion of trans-disciplinary research on tourism studies.

<http://www.cats.hokudai.ac.jp/en/>



### ⑤ Center for Ainu and Indigenous Studies

Cooperates with Ainu people to promote interdisciplinary research and education on indigenous peoples, and is building a network with similar institutions around the world and with indigenous organizations.

<http://www.cais.hokudai.ac.jp/english/>



### ⑥ Center for Experimental Research in Social Sciences

Advances experimental studies in the social sciences, develops and promotes young social scientists, and engages in research activities internationally.

<http://lynx.let.hokudai.ac.jp/cerss/en/>



### ⑦ Center for Environmental and Health Sciences

Conducts large-scale epidemiological research projects on environmental and health sciences, the results of which are presented nationally and internationally. Educates individuals who can develop research in the field of environmental and health sciences, and promotes closer links between domestic and foreign research groups and organizations.

<http://www.cehs.hokudai.ac.jp/en/>



### ⑧ Arctic Research Center

Promotes trans-disciplinary approaches to the sustainable development and utilization of the Arctic, and conducts integrated studies on solutions to problems through collaboration between different fields, including the natural, social and practical sciences.

<http://www.arc.hokudai.ac.jp/en/>

## 2) Educational Centers



### ① Research and Education Center for Brain Science

Provides programs for graduate students on brain science through the study of different brain functions, cognition, and behavior during critical periods. Aims to develop global brain researchers and new research fields through an environment that integrates intellectual disciplines from the arts and sciences.

<http://www.hokudai.ac.jp/recbs/english/index.html>



### ② Center for Language Learning

Provides foreign language and language-related courses to students who seek to acquire or improve their skills in foreign languages. Develops online multimedia resources that facilitate language learning and provide indepth language practice.

<http://www.imc.hokudai.ac.jp/lang/>

### 3) Specific Operations

#### ① Hokkaido University Museum

The Hokkaido University Museum was established in 1999. The main roles of our museum are to collect scientifically significant specimens and historical documents, to hold exhibitions based on the results of past and present research, and to offer educational programs to students and the public.

<http://www.museum.hokudai.ac.jp/> (Japanese)



The Hokkaido University Museum reopened to the public on Tuesday, July 26, 2016, following a major renovation. The upgraded museum will also showcase the university's twelve undergraduate schools. With a café, museum shop, and a multipurpose space, students, teaching staff and local citizens alike can enjoy the museum more than ever.

Opening hours:

10 a.m.–5 p.m. (Fridays 10 a.m.–9 p.m., June–October)

Closed Mondays and December 28–January 4

#### ② Hokkaido University Archives

The Hokkaido University Archives collects, organizes, preserves, and shares important documents pertaining to the university. Archived documents include historically valuable items such as personal diaries, lecture notes, correspondence, manuscripts, albums, and calligraphy from university-affiliated students, faculty, and staff gathered from the official records, students' reports, research documents, publications, and commemorative photos of each faculty.

The archives investigates these documents, researches Hokkaido University history, publishes yearly reports, and holds meetings to publicize the results. The archives also strives to keep in touch with the present—by holding exhibitions that focus on students' lives such as an exhibition on alumni that have moved to Taiwan—as it introduces the past history and historical documents of the university to a broader audience.

Opening hours : Monday–Friday, 9:30 a.m.–4:30 p.m.

<http://www.hokudai.ac.jp/bunsyo> (Japanese)



#### ③ Health Care Center

The Hokkaido University Health Care Center provides medical checkups, health consultations, and primary care for non-critical conditions such as cuts, burns, colds and flus, and stomach issues to students and staff. For a complete list of services, please refer to the website.

<http://www.oia.hokudai.ac.jp/current-students/health-and-wellness/health-care/health-care-center/>



#### ④ Archaeological Research Center

The Archaeological Research Center's mission is to promote and facilitate the rescue excavation, study, conservation, and public understanding of our archaeological heritage from the campus of Hokkaido University.

<http://www.hucc.hokudai.ac.jp/~q16697/maibun/>



Excavation of pit dwelling on the campus of Hokkaido University

## 12. Hokkaido University Libraries



Central Library

As one of Japan's leading research libraries, the Hokkaido University libraries hold approximately 3.9 million books and journals, including a unique collection of materials focused on the northern region. To raise the standard of academic communication, we continue to increase our electronic collection offerings and develop our institutional repository. With a seating capacity of around 1,600, our libraries continue to play a vital role as places of learning.

<http://www.lib.hokudai.ac.jp/en/>



Media Court (Central Library)

### Library Hours

Note: Library hours can vary depending on time of year. Please check the website for further information.

	Monday through Friday	Saturday, Sunday, and Holidays
Open-stack reading rooms	8:00 – 22:00	9:00 – 19:00
Stack rooms	9:00 – 20:00	9:00 – 18:30
Group study rooms	8:00 – 21:30	9:00 – 18:30
Multimedia room (North Library)	8:00 – 21:30	9:00 – 19:00



Northern Studies Collection

## 13. Hokkaido University Hospital



Established in 1921, Hokkaido University Hospital provides high-quality medicine, trains competent medical professionals, promotes advanced medical technology, and seeks to contribute to the health and well-being of the community.

<http://www.huhp.hokudai.ac.jp/english/med01.html>



Proton Beam Therapy Center Treatment Room



Da Vinci Si Surgical System

## 14. Global Institution for Collaborative Research and Education (GI-CoRE)

Global Institution for Collaborative Research and Education (GI-CoRE) was formed as a faculty organization under the direct control of the university president to bring together world-class teaching staff from around the world to conduct collaborative research with university scholars. Its purpose is the promotion and support of international collaborative research and education that leverages the university's strengths and distinctive features.

<https://gi-core.oia.hokudai.ac.jp/main/>

### 1) Global Station for Quantum Medical Science and Engineering

Global Station for Quantum Medical Science and Engineering (GSQ) facilitates innovative collaborative studies in radiation oncology, radiation biology, and medical physics, serving as a research hub for world-class research in collaboration with the Radiation Oncology Department of Stanford University School of Medicine.

<https://gi-core.oia.hokudai.ac.jp/gsq/>



### 2) Global Station for Zoonosis Control

Global Station for Zoonosis Control (GSZ) is located at the Research Center for Zoonosis Control. Together with scientists from three partner universities, GSZ has organized the Consortium for the Control of Zoonoses to strengthen basic and applied studies on molecular biology, immunology, and bioinformatics directed towards the development of vaccines and drugs against zoonoses.

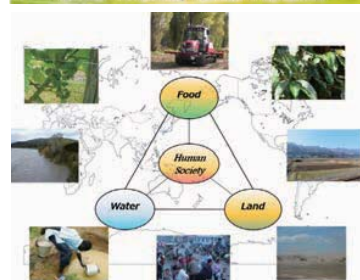
<https://gi-core.oia.hokudai.ac.jp/gsz/>



### 3) Global Station for Food, Land and Water Resources

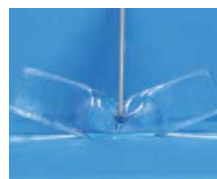
Global Station for Food, Land and Water Resources (GSF) is located in a newly constructed building overlooking the university's spacious experimental farms. To cope with the critical issues affecting the world today, such as an unprecedented growth in the global population, hunger, poverty, and climate change, GSF provides an optimal teaching and research environment for leading faculty from the world's top institutions.

<https://gi-core.oia.hokudai.ac.jp/gsf/>



### 4) Global Station for Soft Matter

Global Station for Soft Matter (GSS) was established to further the development of soft matter as substances that can contribute to solving social problems such as aging, environmental pollution, and lack of resources. Serving as an international research hub, in collaboration with ESPCI Paris Tech, University of North Carolina at Chapel Hill, and others, GSS aims to advance leading fundamental research on soft matter, innovative soft materials, and their medical applications.



<https://gi-core.oia.hokudai.ac.jp/gss/>

### 5) Global Station for Big Data and Cybersecurity

Global Station for Big Data and Cybersecurity (GSB) was launched as an interdisciplinary research hub for investigating big data, information networks, and cybersecurity. GSB promotes international collaborative research with the University of Massachusetts Amherst (UMass Amherst). The station will also be a base for a new graduate-level course called the Division of Cyber Informatics, and aims to foster "IT top-gun" professionals who can thrive in a global information-oriented society.

<https://gi-core.oia.hokudai.ac.jp/gsb/>



### 6) Global Station for Arctic Research

Global Station for Arctic Research (GSA) was launched as a research hub to promote interdisciplinary Arctic research and develop an international research network, based on close connections with the University of Alaska, North-Eastern Federal University, University of Oslo, and University of Leeds. GSA will utilize research outcomes on climate and environmental change in the Arctic to create sustainable industries and foster human resources.

<https://gi-core.oia.hokudai.ac.jp/gsa/>



# 15. Campus Centers

## 1) Creative Research Institution (CRIS)

The Creative Research Institution (CRIS) is a university-wide organization dedicated to the promotion and support of priority research programs based on HU's strategic research policy. It also strives to create new academic disciplines and advance cutting-edge science and technology based on the development of exceptional graduates who will contribute to achieving these aims.

### Research Department

The Research Department is dedicated to creating new priority research themes based on HU's strategic research policy, fostering young researchers, and extending support to basic research programs for industry-academia collaboration.

### Center for Promotion of Platform for Research on Biofunctional Molecules

The center promotes project-type joint research programs based on government-industry-academia collaboration. It also manages and operates North Campus Integrated Research Building No. 6-a Platform for Research on Biofunctional Molecules (PRBM) as a hub for drug discovery and functional food development.

### Green Innovation Research Promotion Center

The Center promotes research programs to support innovation in the field of environmental energy. It also supports R&D initiatives to advance environmental energy technologies based on government-industry-academia collaboration.

### Research Support Office

This campus-wide unit provides support for a range of activities, including research collaboration for creating new priority research themes based on HU's strategic research policy, project proposals for acquiring new research funds, and coordination with funding agencies and other collaborating organizations.

### Office for the Promotion of Future Drug Discovery and Medical Care Innovation

This office supports and promotes activities involving researchers, private businesses, and relevant government ministries and agencies to advance the 'Matching Program for Innovations in Future Drug Discovery and Medical Care' at Hokkaido University.

### Office for the Promotion of Nanotechnology Collaborative Research

This office supports collaboration on research in the field of nanotechnology across the university, as well as with other research institutions. In addition, the office manages the nanotechnology research facilities and supports their use.

### Office for Developing Future Research Leaders

This office is dedicated to developing research and leadership skills in young researchers that will aid them in the next-generation of scientific research.

### Global Facility Center

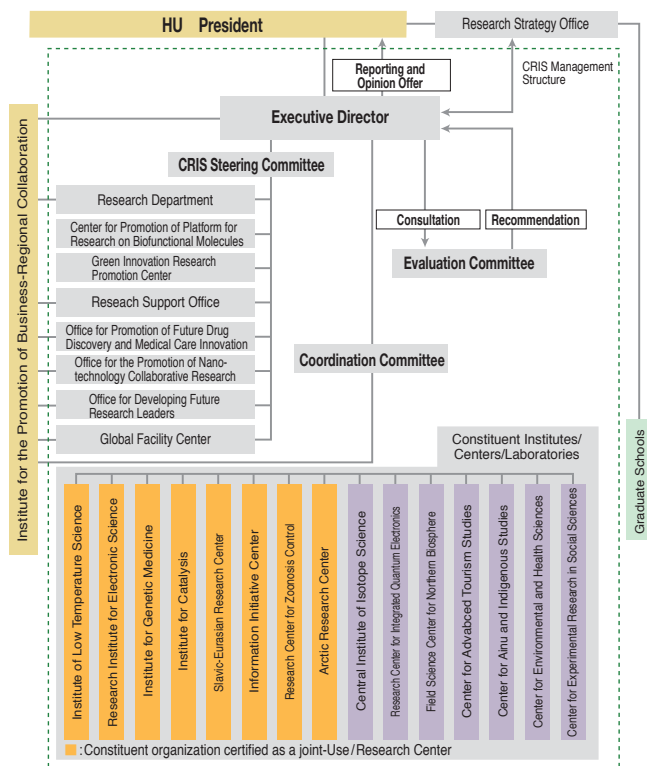
The Global Facility Center maintains, manages, and operates laboratory equipment and facilities for shared use by HU faculty members, students, and others. It also promotes the use of advanced university laboratory equipment and facilities not only among faculty members and students, but also by domestic and foreign non-HU researchers. The center is also responsible for matters concerning sample analysis.

## 2) Institute for the Promotion of Business-Regional Collaboration

The Institute for the Promotion of Business-Regional Collaboration comprises the Center for Innovation and Business Promotion, which engages in joint research and the creation of intellectual properties (IPs), and the Center for Food and Medical Innovation, which promotes and facilitates collaboration between food and medical companies and the university.

The institute aims to apply a broad variety of university research results directly to society by realizing a next-generation of collaboration with companies, communities, and other universities.

For the university's results to reach society promptly, the institute strongly and systematically facilitates and coordinates commercialization of the university's IPs and policy proposals to local governments.



### ① Center for Innovation and Business Promotion

#### Strategy & Planning Department

Promotes practical learning through effective use of tangible and intangible assets in society.

- Promotes the application of research results in society through use of advanced business collaboration facilities and joint-use equipment
- Promotes effective use of the university's assets in society, such as through intellectual property rights (patents, copyrights, etc.), tangible research development results, and the Hokkaido University brand.

#### Business Collaboration Department

Promotes systematic business collaborations to create new industries.

- Promotes processes needed to create new industries, from contracts to progress management. This is conducted through equal-partnership collaboration policies by our Management Functions and Implementation Department (Department for Creation of New Industries).

#### Regional Collaboration Department

Develops of systematic regional collaborations for implementing results in communities

- Collects information on collaborative activities for community implementation of solutions to regional issues, particularly in the humanities.
- Promotes systematic collaboration to solve regional issues, including collaboration between the humanities and sciences.

#### Human Resource Education and Development Department

Educates future venture capitalists and coordinators

- Effectively links resources inside and outside the university to support people with business plans.
- Educates future coordinators by strengthening collaborations with communities, companies, and supporting organizations.

## ② Center for Food and Medical Innovation

### Research Department

Takes part in implementing research and development projects at the Global Research Hub for Food and Medical Innovation

- Establishes research organizations for systematic business collaborations (Department for Creation of New Industries).

### Strategic Support Department

Supports research and development projects at the Global Research Hub for Food and Medical Innovation.

- Promotes and supports research and development projects for creating innovations that link food, physical activity, health, and medical-related initiatives

<https://www.fmi.hokudai.ac.jp/en/>



## 3) Office for Enhancing Institutional Capacity

The office takes forward-looking action to improve our research capabilities and increase educational and research activities on a global scale.

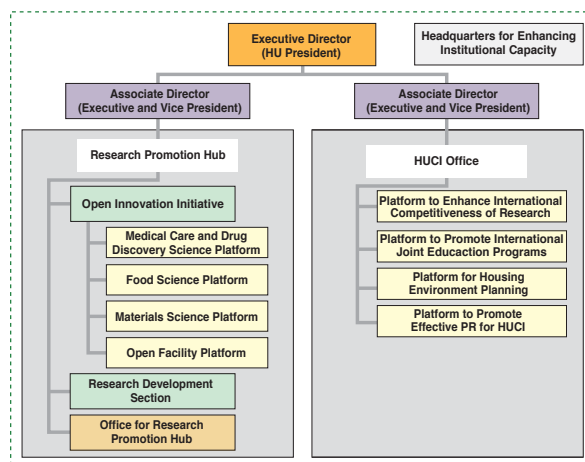
### Research Promotion Hub

The Research Promotion Hub mainly is involved in promoting research on projects to enhance next-generation institutional capacity. The Open Innovation Initiative is a liaison that coordinates between numerous research projects to benefit the university. The hub also promotes the application and development of findings.

The Research Development Section carries out system reforms for enhancing institutional capacity, with a focus on reinforcing research capacity and globalization, improving multidisciplinary and university-wide research strategy planning, and promoting research.

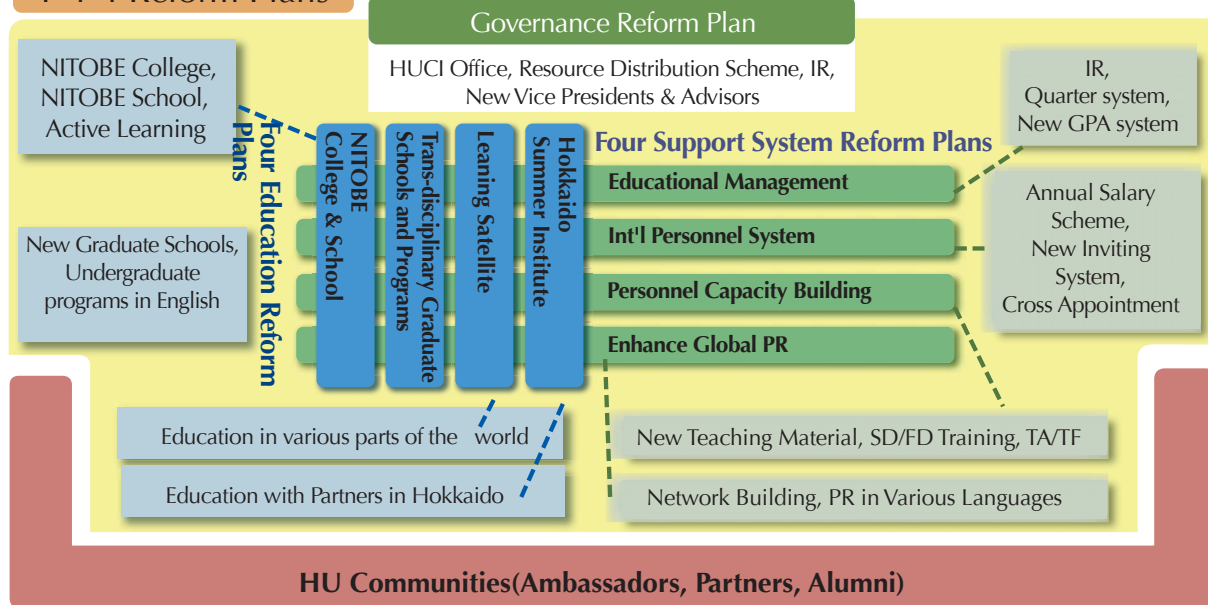
### Hokkaido Universal Campus Initiative (HUCI) Office

Our office manages and monitors the university's progress to achieve the goals outlined in the "Hokkaido Universal Campus Initiative". This initiative influences HU's capacity to collaborate with various higher education institutions overseas in educating the next generation of leaders who will contribute to the resolution of global issues. We have received "Top Global University Project" grants for the years 2014-2023 by the Japanese government in order to sufficiently address these aims.



## Hokkaido Universal Campus Initiative (HUCI) - Collaborate with the World

### 1-4-4 Reform Plans



#### 4) Admission Center



Open campus



Career planning in Tokyo, Osaka, and Nagoya

The Admission Center helps match students who want to study at Hokkaido University with our faculties and research institutes. The center is responsible for conducting entrance examinations and overseeing admissions. It is open to everyone who wants to study at Hokkaido University: high school graduates, adults who want to continue their education, undergraduates who want to go on to graduate school, and even junior high and elementary school students who wish to use our educational facilities.

<http://e-apply.jp/e/hokudai-exam/>

#### 5) Career Center

The center provides advisory services tailored to the needs of each student to help them plan their careers. It also holds recruitment events, offers individual consultations, and act as a gateway to internships and fruitful business connections.

<http://www.oia.hokudai.ac.jp/current-students/career/>



Company research seminar



Career Center help desk

#### 6) Institute for the Advancement of Higher Education

The institute strengthens the educational cooperation between the university's various faculties and schools, improves the educational functions of the university, and promotes studies on higher education to achieve our goals and realize our ideals.

##### General Education Division

Plans, drafts, and makes adjustments to general education. The division includes a General Education Laboratory Exercise in Natural Sciences.

##### Graduate School Education Division

Plans, drafts, and makes adjustments to common subjects across the university's graduate schools, and promotes leading graduate school programs

##### First-year Education Division

Provides services for first-year students, such as course planning, educational guidance, and assistance in preparing for the second year of university. Manages the university register.

##### Higher Education Research and Development Division

Consists of a Research Division of Higher Education, which is involved in practical research and study concerning higher education.

##### Center for Teaching and Learning

Consists of three divisions: Faculty Development (FD), Staff Development (SD), and Learning Support (LS). The center is responsible for FD and SD in the university, and acts as a training center for Hokkaido Prefecture. LS is for students enrolled at the university.

##### Center for Open Education

Consists of two divisions: e-Learning and the Communication in Science & Technology Education & Research Program. Utilizing information and communication technology, the center supports teaching and learning, and researches and develops open education resources.

##### Sports Training Center

Provides physical education instruction for university students and staff.



#### 7) Institute for International Collaboration

In 2016, Hokkaido University launched the Institute for International Collaboration (IIC) in an organizational restructuring effort designed to promote internationalization in education and research. The institute is now a "one-stop shop" for information and guidance on a wide range of issues that were previously separate in location and authority. The IIC's goals are to improve the international mobility of faculty members and students, secure outstanding students and researchers from abroad, and encourage Japanese students to explore and experience overseas institutions.



## 16. Campus Offices

### 1) Front Office for Human Resource Education and Development

This office consists of S-cubic, I-HoP, Tenure-Track, and the FResHU offices. Its purview is the education and development of young postdoctoral researchers and PhD students.

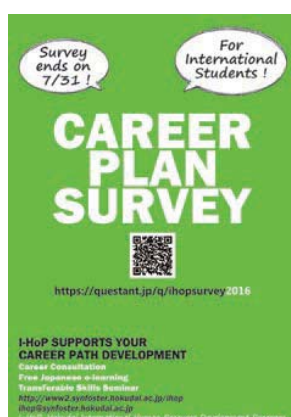
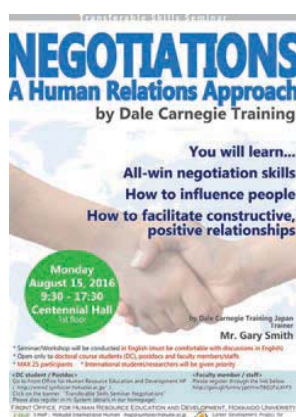
#### S-cubic

Superior Skill Station (S-cubic) provides a wide variety of career development support programs for PhD students and post-doctoral researchers (DC, PD) with native Japanese communication skills or equivalent. Supported by the Hi-System, an exclusive information exchange platform, S-cubic connects currently enrolled DC and PD with 400+ private companies, and disseminates event notifications and other career-related information. Opportunities are given to many DC and PD each year to launch exciting careers in the industries. For details, please visit:

<http://www2.synfoster.hokudai.ac.jp/S-cubic>

#### I-HoP

International Human Resource Development Program (I-HoP) provides career development support for foreign DC and PD in English. It offers free on-demand Japanese e-learning, quarterly Japanese speaking tests, career counseling in English and Japanese, events for career matching with different industries, and seminars/workshops to enhance transferable research skills. I-HoP shares its opt-in information platform “Hi-system” with S-cubic, and disseminates career-related information and event notification both in English and Japanese.



<http://www2.synfoster.hokudai.ac.jp/ihop>

#### Tenure-Track

The Promotion Office for Tenure-Track plays an important role in the Hokkaido University Tenure-Track System in supporting skilled young researchers in becoming future leaders by advertising posts both domestically and internationally. The office also aims to standardize the Hokudai Tenure-Track System and the Tenure-Track Promotion Program throughout the divisions and the departments of Hokkaido University.

<http://tenure-track.cris.hokudai.ac.jp/>

#### FResHU

The Support Office for Female Researchers in Hokkaido University (FResHU) was established based on the university's policy of promoting gender equality. Female students and research and teaching staff need a learning and working environment in which their talents can develop to their full potential. To this end, FResHU provides a variety of support for career development and work-life management. It also works to promote changes in the general attitude towards women in academia. In addition, FResHU reaches out to young women in high school to provide guidance on future study choices.

<http://freshu.ist.hokudai.ac.jp/en/>



Support Office for Female Researchers  
in Hokkaido University

#### Consortium Office for Fostering of Researchers in Future Generations (COFRE)

The COFRE program consists of two projects: the Education Program for Next Generation Researchers and the Cooperative Education Program for Developing Innovative Human Resources (PD, DC). In addition to promoting young researchers' expertise in autonomous research environments, the consortium helps these researchers obtain the ability to fully exercise the skills they need in a variety of situations both in Japan and overseas, and strives to produce a new generation of scientific and technological personnel with global mindsets and transferable skills.

<http://cofre.synfoster.hokudai.ac.jp>

## 2) Office for a Sustainable Campus

The Office for a Sustainable Campus was established as the core organization for implementing a campus-wide sustainability management system. It aims to shrink the institution's environmental load to zero emissions on campus through the use of natural and renewable energy, and to help Hokkaido University play a leading role in creating a sustainable society.

### Campus Assessment Division

Devises a basic plan and an action plan, conducts the Assessment System for Sustainable Campus (ASSC), and develops participatory programs.

### Environmental Impact Reduction Division

Devises an action plan, implements measures to save energy, and applies softy assets to the environmental management of the campus.

### Environmental Preservation Center

Conducts the 3R Campaign (reduce, reuse, recycle) and waste management on campus

<http://www.osc.hokudai.ac.jp/en/>



6<sup>th</sup> International Symposium on the Creation of Sustainable Campus



New Campus Master Plan Support Workshop for Students



New Campus Master Plan Support Workshop for Faculty

## 3) Office of Health and Safety

HU establishes structures for safety and health management in each workplace (e.g., Sapporo Campus, Hokkaido University Hospital, and the Hakodate Campus) based on the provisions of the Industrial Safety and Health Act. As the university is a conglomeration of colleges, related safety and health issues encompass a wide range of considerations, including matters arising from diverse research activities, research ethics, and bioethics that affect staff as well as students, patients, visitors and others. The Office of Health and Safety monitors these issues, and plans, devises, and supervises safety and health measures from a campus-wide perspective.

### Duties and Functions

- Identification of safety and health initiatives and challenges
- Planning and design of safety / health measures
- Supervision of matters concerning safety / health and provision of related guidance



Safety inspection

## 17. Overseas Satellite Offices

The Overseas Satellite Offices were established to provide a higher level of information and services regarding the university and its entrance examinations to potential students. Staff at these offices plan events, negotiate with local universities to establish inter-university partnerships, and support former international students in alumni association activities. These offices also serve as hubs for HU faculty members when they visit these cities for research activities.

### 1) Korea Office in Seoul

The mission of the Korea Office is to broaden the links between Hokkaido University and universities in Korea, and to increase the number of Korean students studying at Hokkaido University.

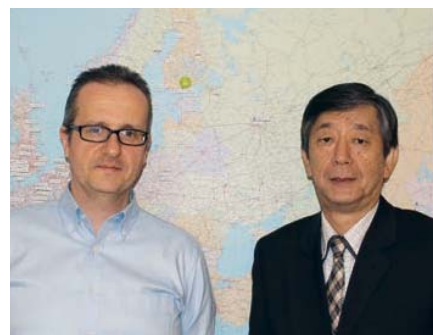
Korea Office in Seoul	
Address	703, Handuk Building, 11, Teheran-ro 7-gil, Gangnam-Gu, Seoul, Korea 06134
Telephone	+82-2-501-9400
Fax	+82-2-501-9410
E-mail	seouloffice@hokudai.kr
Office Hours	Weekdays 09:00-17:00 (closed on Saturdays, Sundays, and Korean national holidays)
Website	<a href="http://www.hokudai.kr">http://www.hokudai.kr</a>



### 2) Europe Office in Helsinki

Our Europe Office is Hokkaido University's second overseas office, following its office in Seoul. The mission of the Europe Office is to broaden HU's links not only with Finnish universities, but also with other European and Russian universities.

Europe Office in Helsinki	
Address	Fabianinkatu 26, 00100 Helsinki, Finland
Telephone	+358-44-757-5135
E-mail	helsinki_office@oia.hokudai.ac.jp
Office Hours	Weekdays 09:00-11:00, 13:00-16:30 (closed on Saturdays, Sundays, and Finnish national holidays)
Website	<a href="http://www.hokudai.fi/">http://www.hokudai.fi/</a>



### 3) Africa Office in Lusaka

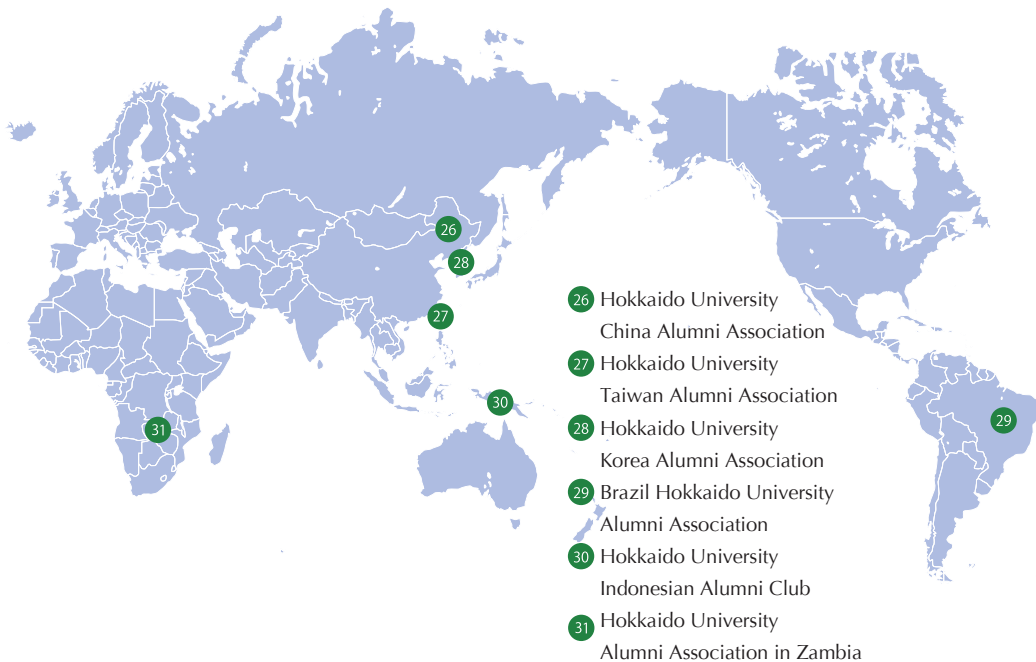
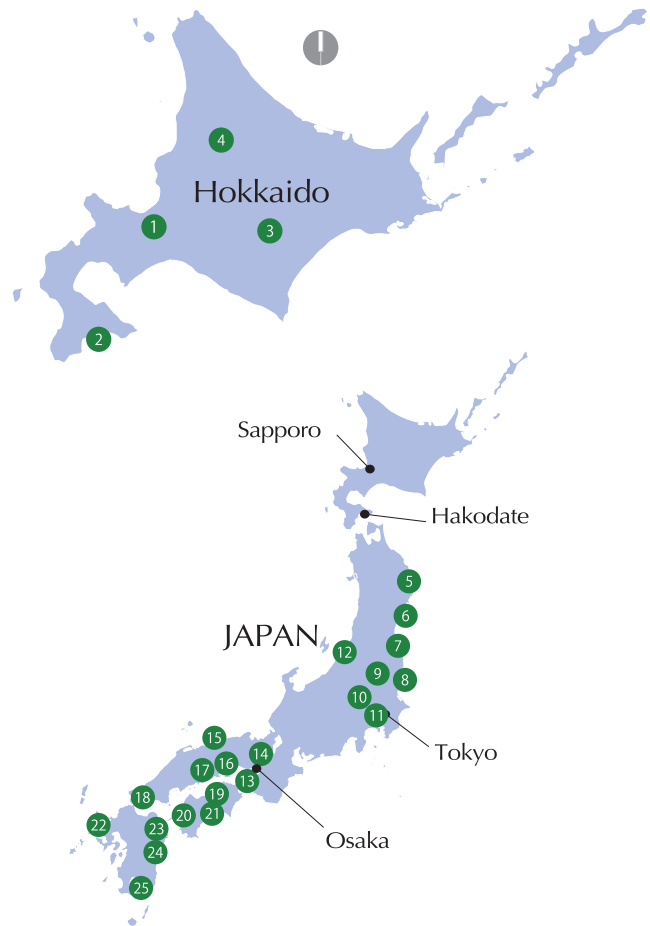
The Africa Office is our most recently established overseas office, which has just been open for 4 years in the capital city of Zambia, Lusaka. Being the only liaison Office in Africa, it is expected to play a pivotal role to develop and strengthen the relationship with universities and other research institutes not only in Zambia but all over the region at large.

Africa Office in Lusaka	
Address	c/o Department of Disease Control, School of Veterinary Medicine, University of Zambia (Great East Road Campus), P.O. Box 32379, Lusaka 10101, Zambia
Telephone	+260-974-038329
E-mail	lusaka_office@oia.hokudai.ac.jp
Office Hours	Weekdays 9:00-13:00, 14:00-16:30 (closed on Saturdays, Sundays, and Zambian national holidays)
Website	<a href="http://www.hokkaido-university-lusakaoffice-zm.com/">http://www.hokkaido-university-lusakaoffice-zm.com/</a>



## 18. Hokkaido University Alumni Associations

- 1 Hokkaido University Alumni Association  
Hokkaido University Hokkaido Company
- 2 Hokkaido University Hakodate Alumni Association
- 3 Tokachi Elm Association
- 4 Asahikawa Hokudai Alumni Association
- 5 Iwate Hokudai Association
- 6 Hokkaido University Miyagi Prefecture Alumni Association
- 7 Hokkaido University Fukushima Prefecture Alumni Association
- 8 Hokkaido University Ibaraki Prefecture Alumni Association
- 9 Hokkaido University Tochigi Alumni Association
- 10 Jomo Elm Association
- 11 Hokkaido University Tokyo Alumni Association
- 12 Hokkaido University Niigata Alumni Association
- 13 Hokkaido University Kansai Alumni Association
- 14 Kyoto Elm Association
- 15 Tottori Prefecture Hokudai Alumni Association
- 16 Okayama Hokudai Elm Association
- 17 Hiroshima Elm Association
- 18 Kyushu / Yamaguchi Hokudai Elm Association
- 19 Hokkaido University Alumni Association Kagawa Branch
- 20 Ehime Elm Association
- 21 Hokkaido University Kochi Prefecture Alumni Association
- 22 Hokkaido University Alumni Association Saga Prefecture Branch
- 23 Hokkaido University Oita Prefecture Alumni Association
- 24 Miyazaki Elm Association
- 25 Kagoshima Elm Association



## 19. Hokkaido University Ambassador and Partner System

To build a global network of Hokkaido University, the university began appointing HU ambassadors and partners starting in April 2016. These titles are granted to people who contribute to the educational, research, or international promotional activities of HU or any of its affiliated organizations. Ambassadors and partners play important roles in the HU community, and support HU by working to strengthen the university's ties with its alumni associations, particularly those overseas.

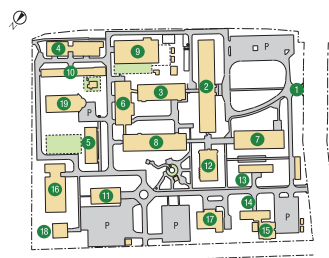
The Ambassador and Partner System selects ambassadors and partners to appoint and helps determine their activities. Ambassadors and partners work with HU and alumni associations both inside and outside Japan to expand and enliven HU's community in a wide variety of ways in accordance with the Hokkaido Universal Campus Initiative.



## 20. Campus Maps

### 1) Hakodate Campus Map

- |   |   |
|---|---|
| ① Main Gate                                 | ⑫ Library   |
| ② Main Building                             | ⑬ Aquatic Biological Specimen House (Nakabe Hall) |
| ③ Annex Building                            | ⑭ Garage  |
| ④ Marine Bioresources Research Building     | ⑮ Fisheries Museum (annex)                        |
| ⑤ Marine Frontier Research Building         | ⑯ Gymnasium                                       |
| ⑥ Marine Science Creative Research Building | ⑰ Student Center                                  |
| ⑦ Lecture-room Building                     | ⑱ Student Activities Building                     |
| ⑧ Student Laboratories                      | ⑲ Swimming Pool                                   |
| ⑨ Controlled Environment Rooms              |   |
| ⑩ Towing Tank Room                          |   |
| ⑪ Auditorium                                |   |



### 2) Sapporo Campus Map



**1 Administration Bureau**  
General Affairs and Planning Dept., Finance Dept.,  
Research Promotion Dept., Facilities Dept.  
Kita 8, Nishi 5, Kita-ku, Sapporo 060-0808

**2 Academic Affairs Dept.**  
Student Support Division,  
Entrance Exam Division, Admission Center  
Kita 17, Nishi 8, Kita-ku, Sapporo 060-0817  
Tel: +81-(0)11-706-7484  
Fax: +81(0)11-706-7488  
E-mail: [ac-info@academic.hokudai.ac.jp](mailto:ac-info@academic.hokudai.ac.jp)  
<http://www.hokudai.ac.jp/bureau/nyu/index.html>

**3 Front Office for Human Resource  
Education and Development**  
Kita 8, Nishi 5, Kita-ku, Sapporo 060-0808

**4 Career Center**  
Kita 8, Nishi 8, Kita-ku, Sapporo 060-0808  
Office Hours: 8:30 - 18:00  
(Except on Saturdays, Sundays, and national holidays)  
Tel: +81-(0)11-706-3271  
E-mail: [ccadv@academic.hokudai.ac.jp](mailto:ccadv@academic.hokudai.ac.jp)

**5 Institute for the Promotion of  
Business-Regional Collaboration  
(Center for Innovation and Business Promotion)**  
Kita 21, Nishi 11, Kita-ku, Sapporo 001-0021

**6 Creative Research Institution (CRIS)**  
Kita 21, Nishi 10, Kita-ku, Sapporo 001-0021

**7 Division of Research Support,  
Research Promotion Dept.**  
Kita 21, Nishi 10, Kita-ku, Sapporo 001-0021

**8 Institute for International Collaboration /  
Center for International Education and Research /  
International Affairs Dept.**

Kita 15, Nishi 8, Kita-ku, Sapporo 060-0815

• **Division of International Planning**  
Tel: +81-(0)11-706-2104

• Division of International Relations  
Tel: +81-(0)11-706-8023  
Fax: +81-(0)11-706-8036

• Division of International **Students**  
Tel: +81-(0)11-706-8053  
Fax: +81-(0)11-706-8067  
E-mail: [ryugaku@oia.hokudai.ac.jp](mailto:ryugaku@oia.hokudai.ac.jp)

• Division of International Exchange  
Tel: +81-(0)11-706-8035  
Fax: +81-(0)11-706-8037  
E-mail: [dis@oia.hokudai.ac.jp](mailto:dis@oia.hokudai.ac.jp)

**9 Institute for the Advancement  
of Higher Education**  
Kita 17, Nishi 8, Kita-ku, Sapporo 060-0817

**10 Office of Health and Safety**  
Kita 8, Nishi 5, Kita-ku, Sapporo 060-0808

**11 Office of Internal Auditors**  
Kita 8, Nishi 5, Kita-ku, Sapporo 060-0808

**12 Office for a Sustainable Campus**  
Kita 8, Nishi 5, Kita-ku, Sapporo 060-0808  
Tel: +81(0)11-706-4530

**1 Information Center**  
Kita 8, Nishi 5, Kita-ku, Sapporo 060-0808  
Tel: +81(0)11-706-4680

**Experimental Station for  
Medicinal Plant Studies**  
Kita 3, Nishi 8, Chuo-ku, Sapporo 060-0003  
Tel: +81(0)11-221-0066

**Front Office for Human Resource  
Education and Development**

S-cubic  
Tel: +81(0)11-706-3275  
Fax: +81(0)11-706-3584  
E-mail: [s-cubic@synfoster.hokudai.ac.jp](mailto:s-cubic@synfoster.hokudai.ac.jp)

I-HoP  
Tel: +81(0)11-706-2157  
E-mail: [ihop@synfoster.hokudai.ac.jp](mailto:ihop@synfoster.hokudai.ac.jp)

Tenure-Track  
Tel: +81(0)11-706-9181  
E-mail: [lstation@cris.hokudai.ac.jp](mailto:lstation@cris.hokudai.ac.jp)  
FResHU  
Tel: +81(0)11-706-3625  
Fax: +81(0)11-706-3692  
E-mail: [freshu@synfoster.hokudai.ac.jp](mailto:freshu@synfoster.hokudai.ac.jp)

**COFRE**  
Tel: +81(0)11-706-2271  
Fax: +81(0)11-706-3584  
E-mail: [cofre@synfoster.hokudai.ac.jp](mailto:cofre@synfoster.hokudai.ac.jp)

**Tokyo Office**  
Sapia Tower 10 F,  
Marunouchi 1 chome 7-12,  
Chiyoda-ku, Tokyo 100-0005  
Tel & Fax: +81-3-3211-2055  
E-mail: [tokyo@general.hokudai.ac.jp](mailto:tokyo@general.hokudai.ac.jp)

Office Hours: Weekdays 10:00-18:00  
(Closed Saturdays, Sundays,  
and Dec. 29 - Jan.3)

**Osaka Alumni House**  
Osaka Station Dai 2 Bldg. 2nd F,  
Umeda 1 chome 2-2-200, Kita-ku,  
Osaka 530-0001

Tel & Fax: +81-6-6343-3736  
(Closed on Aug. 13-16, and Dec. 29 - Jan.3)

## Health Related

**1 Hokkaido University Hospital**  
Kita 14, Nishi 5, Kita-ku,  
Sapporo 060-8648  
Tel: +81(0)11-716-1161

**2 Health Care Center**  
Kita 16, Nishi 7, Kita-ku,  
Sapporo 060-0816

## Child Care Services

**1 'Tomoni' Child Care Center**  
Kita 7, Nishi 9, Kita-ku, Sapporo 060-0807  
Tel: +81(0)11-706-2151

**2 'Kodomo No Sono' Child Care Center**  
Kita 11, Nishi 5, Kita-ku, Sapporo 060-0811  
Tel: +81(0)11-706-4588

## Accommodation

**1 Keiteki Student Dormitory**  
Kita 18, Nishi 13, Kita-ku, Sapporo 060-0818  
Tel: +81(0)11-747-7849

**Sosei Student Dormitory**  
Kita 14, Nishi 2, Kita-ku, Sapporo 001-0014  
Tel: +81(0)11-758-7934

**2 Foreign Scholars' Accommodation**  
Kita 24, Nishi 12, Kita-ku, Sapporo 001-0024  
Tel: +81(0)11-707-3711

**3 Hokkaido University International House Kita 8**  
Kita 8, Nishi 11, Kita-ku, Sapporo 060-0808  
Tel: +81(0)11-736-6211

**4 Hokkaido University International House Kita 23**  
Kita 23, Nishi 13, Kita-ku, Sapporo 001-0023  
Tel: +81(0)11-700-3455

**Hokushin Student Dormitory / Oshoro Guest House**  
Nakamichi 1-9-1, Hakodate 041-0853  
Tel: +81(0)138-52-1160

## Conference and Event Facilities

**1 Conference Hall**  
Kita 8, Nishi 5, Kita-ku,  
Sapporo 060-0808  
Tel: +81(0)11-706-2141 (Office)

**2 Centennial Hall**  
Kita 9, Nishi 6, Kita-ku,  
Sapporo 060-0809  
Tel: +81(0)11-706-3211 (Office)

**Faculty House Trillium**  
**3** Kita 11, Nishi 8, Kita-ku,  
Sapporo 060-0811  
Tel: +81(0)11-706-2394 (Office)  
\*Reservation  
Tel: +81(0)11-706-2042

**4 Enyuu Gakusha**  
Kita 18, Nishi 7, Kita-ku,  
Sapporo 001-0018  
Tel: +81(0)11-706-7455

**5 Clark Memorial Student Center**  
Kita 8, Nishi 5, Kita-ku,  
Sapporo 060-0808  
Tel: +81(0)11-706-2989

**6 Student Center for  
Extracurricular Activities**  
Kita 17, Nishi 12, Kita-ku,  
Sapporo 060-0817  
Tel: +81(0)11-747-3136

**7 Multimedia Education Building**  
Kita 17, Nishi 8, Kita-ku,  
Sapporo 060-0817  
Tel: +81(0)11-706-7500

## Graduate Schools, Faculties, and Schools

- ① **Graduate School / Faculty of Letters**  
Kita 10, Nishi 7, Kita-ku, Sapporo 060-0810
- ② **Graduate School / Faculty of Law**  
Kita 9, Nishi 7, Kita-ku, Sapporo 060-0809
- ③ **Graduate School / School of Economics and Business Administration**  
Kita 9, Nishi 7, Kita-ku, Sapporo 060-0809
- ④ **Faculty / Graduate School / School of Education**  
Kita 11, Nishi 7, Kita-ku, Sapporo 060-0811
- ⑤ **Graduate School of International Media, Communication, and Tourism Studies / Research Faculty of Media and Comm.**  
Kita 17, Nishi 8, Kita-ku, Sapporo 060-0817
- ⑥ **Graduate School / Faculty of Public Policy**  
Kita 9, Nishi 7, Kita-ku, Sapporo 060-0809
- ⑦ **Graduate School / School of Medicine**  
Kita 15, Nishi 7, Kita-ku, Sapporo 060-8638
- ⑧ **Graduate School / School of Dental Medicine**  
Kita 13, Nishi 7, Kita-ku, Sapporo 060-8586
- ⑨ **Graduate School / School of Veterinary Medicine**  
Kita 18, Nishi 9, Kita-ku, Sapporo 060-0818
- ⑩ **Hokkaido University Veterinary Teaching Hospital**  
Kita 19, Nishi 10, Kita-ku, Sapporo 060-0819
- ⑪ **Faculty of Pharmaceutical Sciences / School of Pharmaceutical Sciences and Pharmacy**  
Kita 12, Nishi 6, Kita-ku, Sapporo 060-0812
- ⑫ **Graduate School / Faculty of Health Sciences**  
Kita 12, Nishi 5, Kita-ku, Sapporo 060-0812
- ⑬ **Graduate School of Information Science and Technology**  
Kita 14, Nishi 9, Kita-ku, Sapporo 060-0814
- Graduate School / School of Fisheries Sciences**  
3-1-1 Minato-cho, Hakodate 041-8611
- ⑭ **Graduate School of Environmental Science / Faculty of Environmental Earth Science**  
Kita 10, Nishi 5, Kita-ku, Sapporo 060-0810
- ⑮ **Graduate School / Faculty / School of Science**  
Kita 10, Nishi 8, Kita-ku, Sapporo 060-0810
- ⑯ **Graduate School / Research Faculty / Faculty of Agriculture**  
Kita 9, Nishi 9, Kita-ku, Sapporo 060-8589
- ⑰ **Graduate School of Life Science**  
Kita 10, Nishi 8, Kita-ku, Sapporo 060-0810
- ⑱ **Faculty of Advanced Life Science**  
Kita 10, Nishi 8, Kita-ku, Sapporo 060-0810
- ⑲ **Graduate School / Faculty / School of Engineering**  
Kita 13, Nishi 8, Kita-ku, Sapporo 060-8628
- ⑳ **Graduate School of Chemical Sciences and Engineering**  
Kita 13, Nishi 8, Kita-ku, Sapporo 060-8628

## Libraries and Archives

- ① **Central Library**  
Kita 8, Nishi 5, Kita-ku, Sapporo 060-0808
- ② **North Library**  
Kita 17, Nishi 8, Kita-ku, Sapporo 060-0817
- ③ **Hokkaido University Archives**  
Kita 8, Nishi 8, Kita-ku, Sapporo 060-0808

## Research Institutes and Centers

- ① **Institute of Low Temperature Science**  
Kita 19, Nishi 8, Kita-ku, Sapporo 060-0819
- ② **Research Institute for Electronic Science**  
Kita 20, Nishi 10, Kita-ku, Sapporo 001-0020
- ③ **Institute for Genetic Medicine**  
Kita 15, Nishi 7, Kita-ku, Sapporo 060-0815
- ④ **Institute for Catalysis**  
Kita 21, Nishi 10, Kita-ku, Sapporo 001-0021
- ⑤ **Slavic-Eurasian Research Center**  
Kita 9, Nishi 7, Kita-ku, Sapporo 060-0809
- ⑥ **Information Initiative Center (North and South Bldgs.)**  
Kita 11, Nishi 5, Kita-ku, Sapporo 060-0811
- ⑦ **Research Center for Zoonosis Control**  
Kita 20, Nishi 10, Kita-ku, Sapporo 001-0020
- ⑧ **Central Institute of Isotope Science**  
Kita 15, Nishi 7, Kita-ku, Sapporo 060-0815
- ⑨ **Research Center for Integrated Quantum Electronics**  
Kita 13, Nishi 8, Kita-ku, Sapporo 060-8628
- ⑩ **Field Science Center for Northern Biosphere**  
Kita 11, Nishi 10, Kita-ku, Sapporo 060-0811
- ⑪ **Center for Advanced Tourism Studies**  
Kita 17, Nishi 8, Kita-ku, Sapporo 060-0817
- ⑫ **Center for Ainu and Indigenous Studies**  
Kita 8, Nishi 6, Kita-ku, Sapporo 060-0808
- ⑬ **Center for Experimental Research in Social Sciences**  
Kita 10, Nishi 7, Kita-ku, Sapporo 060-0810
- ⑭ **Center for Environmental and Health Sciences**  
Kita 12, Nishi 7, Kita-ku, Sapporo 060-0812
- ⑮ **Arctic Research Center**  
Kita 21, Nishi 11, Kita-ku, Sapporo 001-0021
- ⑯ **Research and Education Center for Brain Science**  
Kita 15, Nishi 7, Kita-ku, Sapporo 060-0815
- ⑰ **Center for Language Learning**  
Kita 17, Nishi 8, Kita-ku, Sapporo 060-0817
- ⑱ **Hokkaido University Press**  
Kita 9, Nishi 8, Kita-ku, Sapporo 060-0809
- ⑲ **Hokkaido University Museum**  
Kita 10, Nishi 8, Kita-ku, Sapporo 060-0810
- ⑳ **Archaeological Research Center**  
Kita 11, Nishi 7, Kita-ku, Sapporo 060-0811
- ㉑ **Global Institution for Collaborative Research and Education (GI-CoRE)**  
Kita 15, Nishi 8, Kita-ku, Sapporo 060-0815
- ㉒ **Global Station for Quantum Medical Science and Engineering**  
Kita 15, Nishi 7, Kita-ku, Sapporo 060-8648
- ㉓ **Global Station for Zoonosis Control**  
Kita 20, Nishi 10, Kita-ku, Sapporo 001-0020
- ㉔ **Global Station for Food, Land and Water Resources**  
Kita 9, Nishi 10, Kita-ku, Sapporo 060-8589
- ㉕ **Frontier Research in Applied Sciences Bldg.**  
Kita 13, Nishi 8, Kita-ku, Sapporo 060-8628

## Off-Campus Research Stations and Facilities

---

Usu Volcano Observatory,  
Institute of Seismology and Volcanology, Faculty of Science  
Tatsuka 142, Sobetsu-cho, Usu-gun 052-0106  
Tel: +81(0)142-66-4011

---

Northern Forestry Research and Development Office,  
Forest Research Station\*  
Aza Tokuda 250, Nayoro 096-0071  
Tel: +81(0)1654-2-4264

---

Teshio Experimental Forest,  
Northern Forestry Research and Development Office,  
Forest Research Station\*  
Aza Toikanbetsu 131, Horonobe-cho, Teshio-gun 098-2943  
Tel: +81(0)1632-6-5211

---

Nakagawa Experimental Forest, Northern Forestry Research  
and Development Office, Forest Research Station\*  
Aza Otoineppu 483, Otoineppu-mura, Nakagawa-gun 098-2501  
Tel: +81(0)1656-5-3216

---

Uryu Experimental Forest, Northern Forestry Research  
and Development Office, Forest Research Station\*  
Aza Moshiri, Horokanai-cho, Uryu-gun 074-0741  
Tel: +81(0)1653-8-2125

---

Tomakomai Experimental Forest, Southern Forestry Research  
and Development Office, Forest Research Station\*  
Aza Takaoka, Tomakomai 053-0035  
Tel: +81(0)144-33-2171

---

Hiyama Experimental Forest, Southern Forestry Research  
and Development Office, Forest Research Station\*  
Aza Odome 172-1, Kaminokuni-cho, Hiyama-gun 049-0611  
Tel: +81(0)1395-5-2048

---

Wakayama Experimental Forest, Southern Forestry Research  
and Development Office, Forest Research Station\*  
Hirai 559, Kozakawa-cho, Higashimuro-gun Wakayama  
Prefecture 649-4563  
Tel: +81(0)735-77-0321

---

Yoichi Orchard, Experimental Farm,  
Agro-Ecosystem Research Station\*  
Yamada-cho, Yoichi-cho, Yoichi-gun 046-0012  
Tel: +81(0)135-22-3287

---

Shizunai Livestock Farm,  
Agro-Ecosystem Research Station\*  
Shizunai Misono 111, Shinhidaka-cho, Hidaka-gun 056-0141  
Tel: +81(0)146-46-2021

---

Akkeshi Marine Station, Aquatic Research Station\*  
Aikappu 1, Akkeshi-cho, Akkeshi-gun 088-1113  
Tel: +81(0)153-52-2056

---

Muroran Marine Station, Aquatic Research Station\*  
Funami-cho 1 chome 133-31, Muroran 051-0013  
Tel: +81(0)143-22-2846

---

Toya Lake Station, Aquatic Research Station\*  
Tsukiura 122, Toyako-cho, Abuta-gun 049-5723  
Tel: +81(0)142-75-2651

---

Usujiri Fisheries Station, Aquatic Research Station\*  
Usujiri-cho 152, Hakodate 041-1613  
Tel: +81(0)138-25-3237

---

Nanae Freshwater Station, Aquatic Research Station\*  
Sakura-cho 2 chome 9-1, Nanae-cho, Kameda-gun 041-1105  
Tel: +81(0)138-65-2344

---

Oshoro Marine Station, Aquatic Research Station\*  
Oshoro 1-460, Otaru 048-2561  
Tel: +81(0)134-64-2303

---

Otaki Seminar House  
Yutoku-cho 32, Otaki-ku, Date 052-0317  
Tel: +81(0)142-68-6155 (Office)  
Tel: +81(0)11-706-7469 (Reservations)

---

Nibutani House  
Aza Nibutani, Biratori-cho, Saryu-gun 055-0101  
Tel: +81(0)1457-2-2789

---

Shari House  
Hon-cho 46-13, Shari-cho, Shari-gun 099-4113  
Tel: +81(0)1522-3-0373

---







### **Hokkaido University Symbol**

The Hokkaido University symbol is a stylized design of a Trillium Liliaceae (lily family), a perennial which grows wild on campus.

The design was selected in a contest in 1950, and in 1996, on the 120th anniversary of the university, it was altered to its present form and was formally made the university's symbol.

The petals and sepal which make up the six directions (East, West, South, North, Heaven, and Earth) symbolize the dissemination of information from Hokkaido University to Japan and to the world.

### **Institute for International Collaboration**

Kita 15, Nishi 8, Kita-ku, Sapporo, 060-0815

[pr@oia.hokudai.ac.jp](mailto:pr@oia.hokudai.ac.jp)

<http://www.oia.hokudai.ac.jp/>

Published December 2016