



HOKKAIDO
UNIVERSITY

INTERNATIONAL STUDENT PROSPECTUS

2026-2027



HOKKAIDO UNIVERSITY OVERVIEW

Sapporo
Campus



Hakodate
Campus



One of The Seven Major National Universities In Japan

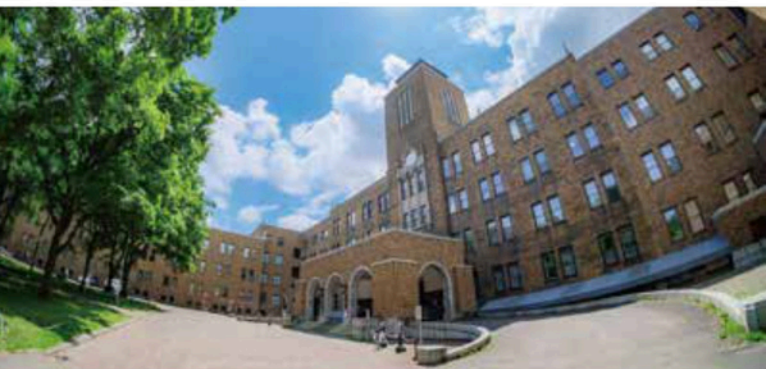
Hokkaido University was established in 1876 as Sapporo Agricultural College, and is one of the oldest, largest and most prestigious universities in Japan. It later became Hokkaido Imperial University and has since been recognized as one of the seven major universities in Japan.

Extensive Career Support

Because we are a comprehensive university, our graduates are able to pursue careers in industry, government, and international organizations. We can also boast of substantial career support for our international students that endeavor to work in Japan. Our Career Center offers guidance and preparation for job hunting in Japan such as how to write an entry sheet and interview training.

Top-Level Research

Hokkaido University can boast of top-level research in a variety of fields; representative of this is the Nobel Prize in Chemistry that Emeritus Professor Akira Suzuki was awarded in 2010 for his work in catalytic chemistry. In addition, we were ranked in the top 100 in the QS World University Rankings 2025 in the fields of Agriculture and Forestry.

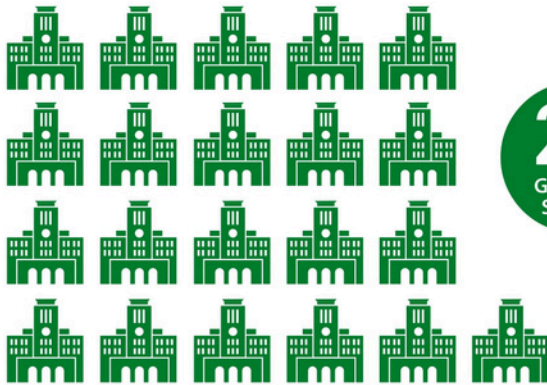


12 Undergraduate and 21 Graduate Schools—the Most Comprehensive Curriculum of National Universities

Hokkaido University's 12 undergraduate and 21 graduate schools cover almost all areas of the humanities, social and natural sciences, and our research leads Japan and the world. Our faculty of over 3,900 allows us to offer our students highly specialized knowledge from researchers in diverse fields.



12
Undergraduate



21
Graduate Schools

Safe and Comfortable Student Life

International Students new to Japan can thrive by taking advantage of the various forms of support we offer. For example, we have a Supporter System in place where both Japanese and foreign students contribute their experiences to help new students settle in quickly; and the International Student Support Desk is open daily to assist with matters in a timely manner.

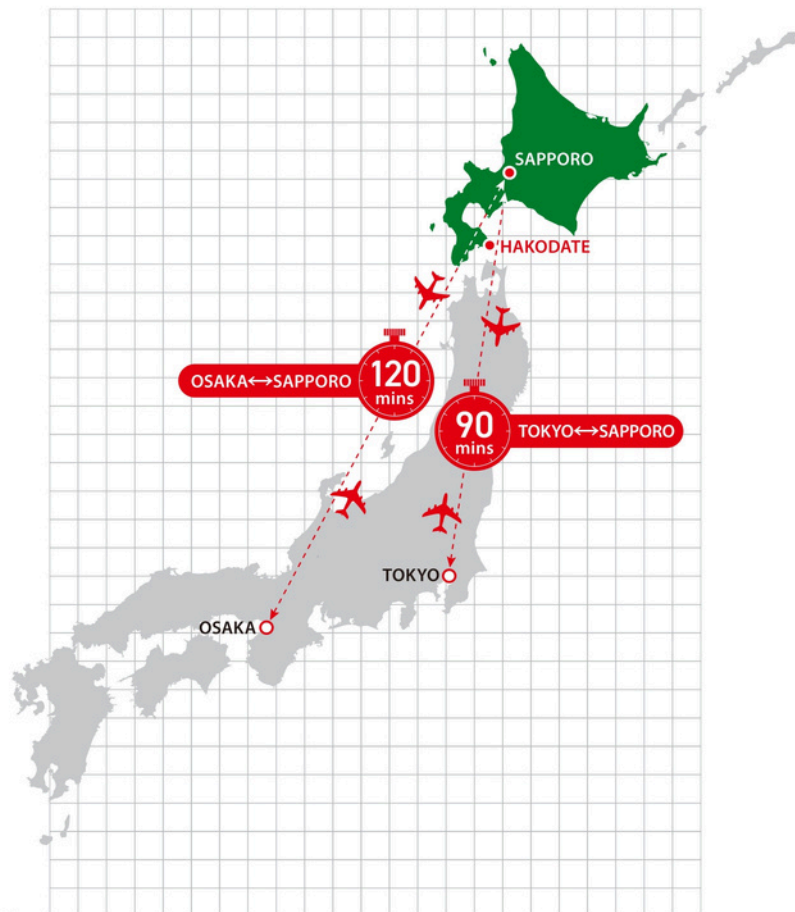
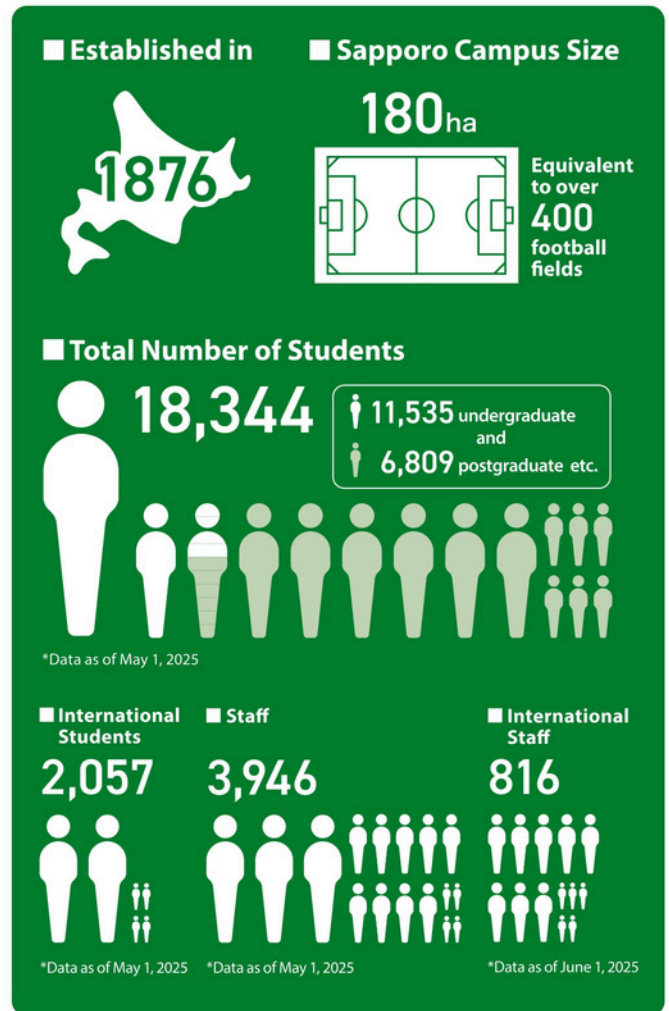
Great Location

Hokkaido University is located in the northern-most major island in Japan. Its main campus is located in Sapporo which is one of the largest cities in Japan and all faculties and schools except for one are located there. Faculty of Fisheries Sciences is located in Hakodate, south-west of Hokkaido Island.

The natural bounty of Hokkaido is an attraction for tourists, and our Sapporo campus has been chosen as "most favorite campus" in a questionnaire by a major Japanese newspaper.

CALENDAR

Academic Year	April 1 - March 31
1st Semester	April 1 - September 30
Summer vacation	Early August - Late September
University Foundation Day	August 14
2nd Semester	October 1 - March 31
Winter vacation	Late December - Early January
*Holiday periods differ slightly depending on the faculty or graduate school	



GENERAL INFORMATION ON ENTRY

Paying your own way?

Entry	Goal	Requirements*	Required Japanese Ability at Entry	Application & Entrance Exams
Undergraduate Students	To obtain a bachelor's degree in English	1. Those who have completed 12 years of education in a foreign country or deemed to be equivalent, or who hold an International Baccalaureate Diploma, <i>Abitur</i> , <i>baccalauréat</i> , GCEA, IGCEA or European Baccalaureate, etc. 2. Those who have fulfilled the English requirements.	None	See p4
	To obtain a bachelor's degree in Japanese	1. Those who have completed 12 years of education in a foreign country or deemed to be equivalent, or who hold an International Baccalaureate Diploma, <i>Abitur</i> , <i>baccalauréat</i> , GCEA, IGCEA or European Baccalaureate, etc. 2. Those who have taken the EJU and fulfilled the score requirements of the subjects designated by the faculties.	Advanced level of Japanese is required. (e.g. JLPT N1 [2,000 kanji + a 10,000-word vocabulary])	See p5
Graduate Students	To obtain master's or doctor's degree	Those who have completed 16 years of education (18 years for some graduate schools) and hold a bachelor's degree or deemed to be equivalent, etc.	Japanese ability requirement differs at each graduate school and your supervisor's approach. Please enquire at each graduate school for details on language requirements.	See p7
Research Students	To conduct research with no aim of obtaining a degree	Those who hold a bachelor's degree or deemed to be equivalent.		
Auditors	To attend lectures with no aim of obtaining a degree (credited or non-credited)	1. Those who hold a bachelor's degree or deemed to be equivalent. 2. Those who possess a high level of knowledge in the specified field they wish to study.		

*Please read the latest Application Guidelines for details.

Japanese Government (MEXT) Sponsored?

Entry	Goal	Entry Requirements	Submission	Amount and Duration**
Undergraduate Students	To obtain a bachelor's degree	You must have completed 12 years of education or equivalent in a foreign country AND be between 17 and 25 years of age.	Submit all documents directly to the Japanese Embassy in your country and take the subsequent exam held yearly between March and May.	¥117,000 monthly for the standard duration of your course plus one year of Japanese Language Training
Graduate Students	To obtain a master's or doctoral degree	You must have completed 16 years* of education or equivalent AND be less than 35 years of age.	Applying through the Japanese Embassy in your country? Submit all documents between March and May.	¥144,000 monthly for the standard duration of a Master's or Professional degree; ¥145,000 per month for the standard duration of a Doctoral degree
Research Students	To conduct research with the aim of advancing to a regular degree course		Applying through Hokkaido University? Submit all documents to the graduate school through the supervisor willing to accept you around December.	¥143,000 monthly for no more than two years including 6 months Japanese Language Training If a grantee comes to Japan in October 2026, his/her scholarship will be payable for 18 months from October 2026 through March 2028 (including a 6-month Japanese Language Training period for grantees who require such training.)
Japanese Language and Culture Studies Program Students	To raise proficiency in Japanese and Japanese Culture		1. You must be a Japanese major enrolled in an undergraduate program at a foreign university at the time of entering and departing Japan 2. Be between 18 and 30 years of age 3. Have N2 or equivalent in the JLPT	¥117,000 monthly for 11 months

* 18 years in the case of Medicine, Dental Medicine, and Veterinary Medicine

** As part of the Monbukagakusho scholarship, an additional monthly stipend of 3,000 yen per month will be provided during the colder months from November to March.

Japanese Language Support

Before Entry	Please study Japanese in your country or at a language school in Japan in advance. Information on schools and course options is available on JASSO website. https://www.jasso.go.jp
After Entry	Hokkaido University offers supplementary Japanese language courses to international students. These courses are designed to help you in your everyday life, research, and career. https://isc.high.hokudai.ac.jp/general_ja_lang/



DEGREE PROGRAMS OFFERED IN ENGLISH

Undergraduate



MODERN JAPANESE STUDIES PROGRAM

The Modern Japanese Studies Program (MJSP) is a four-year bachelor's degree program. It is preceded by a six-month Intensive Japanese Course for those without sufficient proficiency in Japanese to enter the bachelor's degree program directly. MJSP gives a comprehensive education in the language and society of Japan. Hokkaido University invites applications from students worldwide who have a high command of English, an interest in the society and culture of contemporary Japan, and very high levels of academic achievement.

Key Characteristics:

- 1) Intensive study of the Japanese language.
- 2) The study of Japan in four main academic disciplines-history, cultural studies, sociology and political economy.
- 3) Co-learning with Japanese students.
- 4) A flexible curriculum that allows you to discover your Japan from the unique and multicultural vantage point of Japan's northernmost island.

For further details, please visit our website:
<https://www.oia.hokudai.ac.jp/mjsp/>

Modern Japanese Studies Program



Modern Japanese Studies Program Office
 ✉ mjsp@oia.hokudai.ac.jp
Office Of Admissions (for Admission Inquiry)
 ✉ adm-mjsp@academic.hokudai.ac.jp

🌐 <https://www.oia.hokudai.ac.jp/mjsp/>
 📘 Hokkaido University's Modern Japanese Studies Program
 📷 [mjsp.hokkaido](#) ✖ [@MJSP_Hokkaido](#)



Integrated Science Program

The Integrated Science Program is a cross-disciplinary educational science program for international students interested in pursuing a degree in the natural sciences in the Bachelor's and Master's. The program's strong cross-disciplinary nature aims to give students an excellent broad scientific education across the core scientific disciplines (physics, chemistry, and biology) in School of Science, while allowing them to specialize in their chosen fields in later years in accordance with their own interests. While students' main scientific studies are entirely in English, a multitude of additional courses such as business skills courses or leadership and management skills courses will be available in the liberal arts and Japanese language to ensure students receive a rich and fulfilling education while at Hokkaido University.

Key Characteristics:

- 1) Study at one of Japan's oldest and most prestigious universities.
- 2) English language course taught by a diverse international faculty.
- 3) A range of scholarships available.

For further details, please visit our website:
<https://www.oia.hokudai.ac.jp/isp/>

Integrated Science Program



Integrated Science Program Office
 ✉ isp@oia.hokudai.ac.jp
Office Of Admissions (for Admission Inquiry)
 ✉ adm-isp@academic.hokudai.ac.jp

🌐 <https://www.oia.hokudai.ac.jp/isp/>
 📘 Hokkaido University's Integrated Science Program
 📷 [isp.hokkaido](#) ✖ [@ISPHokudai](#)

Postgraduate

<p>(e³) Master's Program in Engineering</p> <p>English Engineering Education Program(e-Cube Program)</p> <p>https://eprogram.eng.hokudai.ac.jp/e3/</p>	<p>(e³) Doctoral Program in Engineering</p>	<p>Doctoral Program in Chemistry and Materials Science</p> <p>Advanced Graduate School of Chemistry and Materials Science</p> <p>https://www.cse.hokudai.ac.jp/en/ags/</p>
<p>Master's Program in Agriculture</p> <p>Global Education Program for AgriScience Frontiers</p> <p>https://www.agr.hokudai.ac.jp/spgp/</p>	<p>Doctoral Program in Agriculture</p>	<p>Doctoral Program in Veterinary Medicine/Infectious Diseases</p> <p>Human-Animal Bond education and research program to deepen the One Health concept</p> <p>https://www.vetmed.hokudai.ac.jp/en/about/pgp/</p>
<p>Master's Program in Life Sciences</p> <p>International Graduate Program (IGP) for Graduate School of Life Science</p> <p>https://altair.sci.hokudai.ac.jp/grad/igpoverview/</p>	<p>Doctoral Program in Life Sciences</p>	<p>Master's Program in Science</p> <p>International Graduate Course for Data-driven & Hypothesis-driven Science (IGC-DHS)</p> <p>https://www2.sci.hokudai.ac.jp/gs/en</p>
<p>Master's Program in Environmental Sciences</p> <p>English Program of Environmental Earth Science for Sustainable Society (EPEES)</p> <p>https://www.ees.hokudai.ac.jp/</p>	<p>Doctoral Program in Environmental Sciences</p>	



UNDERGRADUATE ENTRY (JAPANESE-BASED)

✓ Have you taken the EJU?

The Examination for Japanese University Admission for International Students (EJU) is used to evaluate the Japanese language proficiency and the basic academic abilities of international students wishing to study at the undergraduate level at universities or other such higher educational institutions in Japan. See the below chart for score requirements to enter Hokkaido University. For detailed information, please visit the JASSO website
<https://www.jasso.go.jp/en/index.html>

✓ Are you qualified to apply?

Please read the Application Guidelines to see if you fulfill the basic qualifications. <https://www.hokudai.ac.jp/admission/>

✓ Do you have advanced Japanese?

The lectures and tests will be conducted in Japanese, so you need a very high command of the Japanese language, equivalent to level N1 of the Japanese Language Proficiency Test (knowledge of around 2000 Kanji, + a 10,000-word vocabulary).

STEPS

1

Read the Application Guidelines (published in late May) on our website, take the EJU, and prepare your documents.
<https://www.hokudai.ac.jp/admission/>
 Paper-based Application Guidelines are no longer available.

2

Entrance examinations take place in November and there are two stages involved.
 1st Stage : Application document screening
 2nd Stage :
 ① Interview ② Topic-assigned essay, Aptitude test, or Writing examination
 ③ English test scores*

3

Results are announced in early December.

4

Get ready to begin your Hokudai Experience!
 The academic year begins in April.

If you have any questions, please contact the Office of Admissions.

<https://www.global.hokudai.ac.jp/> ✉ admission@academic.hokudai.ac.jp

SCHOOLS	STEP1▶EJU REQUIREMENTS	STEP2▶SELECTION METHODS
School of Humanities and Human Sciences (4 years)	"Japanese as a Foreign Language" (with writing aptitude): 270 or higher "Japan and the World" + "Mathematics": 265 or higher	1st: Application Document Screening 2nd: Interview, Topic-assigned essay, and Submission of TOEFL-iBT (Home Edition Scores are acceptable; Test Date Scores only)
School of Education (4 years)		1st: Application Document Screening 2nd: Interview, Topic-assigned essay, and Submission of English test scores*
School of Law (4 years)		
School of Economics and Business (4 years)		
School of Medicine	Medicine (6 years) "Japanese as a Foreign Language" (with writing aptitude): 385 or higher "Science" + "Mathematics": 340 or higher	1st: Application Document Screening 2nd: Interview, Topic-assigned essay, and Submission of English test scores: TOEFL-iBT 79 or higher (Home Edition scores are acceptable; Test Date Scores only), or TOEIC L&R 750 or higher are acceptable.
	Health Sciences (4 years) "Japanese as Language"(with writing aptitude):340 or higher "Science"+"Mathematics":300 or higher	1st: Application Document Screening 2nd: Interview, Topic-assigned essay, and Submission of English test scores*
School of Dental Medicine (6 years)	"Japanese as a Foreign Language" (with writing aptitude): 360 or higher "Science" + "Mathematics": 300 or higher	
School of Pharmaceutical Sciences and Pharmacy	Pharmaceutical Sciences (4 years) Pharmacy (6years) "Japanese as a Foreign Language" (with writing aptitude): 340 or higher "Science" + "Mathematics": 300 or higher	1st: Application Document Screening 2nd: Interview, Writing examination, and Submission of English test scores*
School of Veterinary Medicine (6 years)	"Japanese as a Foreign Language" (with writing aptitude): 360 or higher "Science" + "Mathematics": 320 or higher	1st: Application Document Screening 2nd: Interview, Writing examination, and Submission of English test scores*
School of Science (4 years)	"Japanese as a Foreign Language" (with writing aptitude): 270 or higher "Science" + "Mathematics": 265 or higher	1st: Application Document Screening 2nd: Interview, Aptitude test or Writing examination, and Submission of English test scores*
School of Engineering (4 years)		1st: Application Document Screening 2nd: Interview, Submission of English test scores*
School of Agriculture (4 years)	"Japanese as a Foreign Language" (with writing aptitude): 340 or higher "Science" + "Mathematics": 300 or higher	1st: Application Document Screening 2nd: Interview, Topic-assigned essay, and Submission of English test scores*
School of Fisheries Sciences(4 years)	"Japanese as a Foreign Language" (with writing aptitude): 270 or higher "Science" + "Mathematics": 265 or higher	1st: Application Document Screening 2nd: Interview, Writing examination, and Submission of English test scores*

* TOEFL PBT, TOEFL, TOEIC L&R, CAMBRIDGE, IELTS and other examinations deemed equivalent may also be accepted.



UNDERGRADUATE STUDY AREAS

HUMANITIES AND HUMAN SCIENCES https://www.let.hokudai.ac.jp/en	
Humanities and Human Sciences	Philosophy and Cultural Sciences, History and Anthropology, Linguistics and Literature, Human Sciences
EDUCATION https://www.edu.hokudai.ac.jp/en/	
Education	Social Sciences of Education, Pedagogical Foundations of Education, Psychology of Education, Science of Health & Physical Education
LAW https://www.juris.hokudai.ac.jp/	
Law	Public Law, Private Law, Criminal Law, Social Law, Interdisciplinary Legal Studies, Political Studies
ECONOMICS AND BUSINESS https://www.econ.hokudai.ac.jp/	
Economics	Economic Theory, Economic History, Applied Economics
Business Administration	Business Administration, Management Information
MEDICINE https://www.med.hokudai.ac.jp/en/	
Medicine	Anatomy, Physiology, Biochemistry, Pharmacology, Pathology, Microbiology, Immunology, Forensic Medicine, Hygiene, Public Health, Internal Medicine, Surgery, Orthopedic Surgery, Obstetrics and Gynecology, Ophthalmology, Psychiatry, Pediatrics, Dermatology, Plastic Surgery, Urology, Otolaryngology, Radiation Medicine/Nuclear Medicine, Anesthesiology, Neurosurgery, Acute and Critical Care Medicine, Rehabilitation Medicine
Health Sciences	Nursing, Radiological Technology, Medical Technology, Physical Therapy, Occupational Therapy
DENTAL MEDICINE https://www.den.hokudai.ac.jp/en/	
Dentistry	Oral Histology and Embryology, Oral Biochemistry, Oral Pathology, Oral Bacteriology, Dental Pharmacology, Operative Dentistry, Periodontology and Endodontology, Dental Materials and Engineering, Oral Diagnosis and Oral Medicine, Oral and Maxillofacial Surgery, Dental Radiology, Dental Anesthesiology, Pediatric Dentistry, Orthodontics and Aging Dentistry, Preventive Dentistry
PHARMACEUTICAL SCIENCES AND PHARMACY https://www.pharm.hokudai.ac.jp/en/	
Pharmaceutical Sciences	Pharmaceutical Sciences Stream
Pharmacy	Pharmacy Stream
VETERINARY MEDICINE https://www.vetmed.hokudai.ac.jp/en/	
Cooperative Veterinary Education Program	Basic Veterinary Sciences, Pathobiological Veterinary Sciences, Applied Veterinary Sciences, Veterinary Clinical Medicine
SCIENCE https://www2.sci.hokudai.ac.jp/en	
Mathematics	Mathematics Stream
Physics	Physics Stream
Chemistry	Chemistry Stream
Biological Sciences	Biology, Macromolecular Functions
Earth and Planetary Sciences	Earth and Planetary Sciences Stream
ENGINEERING https://www.eng.hokudai.ac.jp/english/	
Applied Science and Engineering	Applied Physics and Engineering, Applied Chemistry, Materials Engineering
Electronics and Information Engineering	Computer Science and Information Technology, Electrical and Electronic Engineering, Bioengineering and Bioinformatics, Media and Network Technologies, Systems, Control and Electrical Engineering
Mechanical and Intelligent System Engineering	Mechanical and Aerospace Engineering, Quantum Energy and Medical Engineering
Socio-Environmental Engineering	Civil Engineering, Public Policy and Engineering, Architecture, Environmental Engineering, Sustainable Resources Engineering
AGRICULTURE https://www.agr.hokudai.ac.jp/en	
Agrobiology and Bioresources	Agrobiology and Bioresources Stream
Applied Bioscience	Applied Bioscience Stream
Bioscience and Chemistry	Bioscience and Chemistry Stream
Forest Science	Forest Science Stream
Animal Science	Animal Science Stream
Bioresource and Environmental Engineering	Bioresource and Environmental Engineering Stream
Agricultural Economics	Agricultural Economics Stream
FISHERIES SCIENCES https://www2.fish.hokudai.ac.jp/language-english/	
Marine Biology	Marine Biology Stream
Applied Marine Science	Applied Marine Science Stream
Aquaculture Life Science	Aquaculture Life Science Stream
Marine Bioresources Chemistry	Marine Bioresources Chemistry Stream



POSTGRADUATE ENTRY

For Master's, Doctoral, and Research Students

Entry Requirements

In order to gain entry into a master's, doctoral, or professional degree program, applicants must:

- hold a bachelor's degree or equivalent and have completed at least 16 years of education (18 years for the case of Medicine, Dentistry, and Veterinary Medicine.)

STEPS

You need to have completed Step 1 at least six months prior to your intended enrollment !

STEP 1

Find and Contact a Supervisor

Graduate and research students conduct research under the guidance of a supervisor. To enter Hokkaido University as a research or graduate student, you need to find a faculty member who is willing to give you instruction on your research. Find a prospective supervisor from our website:

- ①Hokkaido University's Researcher Directory
Hokkaido University's Website>Research and Education>Find a Researcher>HU's Researcher Directory
<https://researchers.general.hokudai.ac.jp/search/index.html?lang=en>
- ②HUSCAP (Hokkaido University Collection of Scholarly and Academic Papers)
Hokkaido University's Website>Research and Education>Find an Academic Paper (HUSCAP)>HUSCAP
<https://eprints.lib.hokudai.ac.jp/dspace/?locale=en>
- ③Graduate school's website information is listed on pg11-12.

STEP 2

Apply to the Graduate School

Check how to apply on the website of the graduate school you wish to enter. Applicants must pay the examination fee at the time of application.

STEP 3

Take the Entrance Examination

Screening procedures for research students are conducted on the basis of documentation submitted whilst screening procedures for graduate level students differ between each school.

Please check the website of the school you wish to enter. In the event that you are required to come to Japan for the entrance examination, you will need to obtain a temporary stay visa at your local Japanese Embassy.

STEP 4

Commence Enrollment Procedures

After passing the screening process, you will be required to submit necessary documentation, pay the entrance fee, and complete other necessary procedures to become enrolled. Only once you are issued with a Letter of Acceptance from Hokkaido University, which is needed to apply for a student visa at your local Japanese Embassy.

Information on Research Students

Many International Students enroll from six months to one year as "research students." Some graduate schools recommend doing this as a precursor to their graduate programs to allow students to settle into their research environments with ease. As with postgraduate students, research students receive guidance from a supervisor in their field of speciality but they cannot receive credits and do not obtain any formal qualification.

POSTGRADUATE STUDY AREAS

Graduate School	Study Areas	Degree	Special Admission for Int'l Students	Obtaining Degree in English**	Time of Enrollment
LAW	[Law and Political Studies] Modern Law, Interdisciplinary Legal Studies, Political Studies, Advanced Institute for Law and Politics [Legal Practice] Private Law, Public Law	Master's	○	×	Apr./Oct.
		Doctor's	○	×	Apr./Oct.
		Juris Doctor's	×	×	Apr.
EDUCATION	[Education] School Education, Lifelong Learning, Educational Social Sciences, Educational Psychology, Clinical Psychology, Health Education, Physical Education, Multicultural Education	Master's	○	×	Apr.
		Doctor's	×	○	Apr./Oct.
ECONOMICS AND BUSINESS	[Modern Economics and Management] Economic Analysis, Social and Historical Economics, Economic Policy, Management Analysis [Accounting] Accounting	Master's	×	○	Apr.
		Doctor's	×	○	Apr./Oct.
		Professional Master's	×	×	Apr.
INTERNATIONAL MEDIA, COMMUNICATION, AND TOURISM STUDIES	[International Media, Communication, and Tourism Studies] Public Journalism, International Public Relations, Media and Culture, Linguistic Communication, International PR Strategies, Tourism Regional Management, International Tourism Development, Tourism and Culture, Exchanging Co-creation, Modern Japanese Studies	Master's	○	×	Apr.
		Doctor's	○	○	Apr./Oct.
HUMANITIES AND HUMAN SCIENCES	[Humanities] Philosophy and Religious Studies, History, Cultural Diversity Studies, Cultural Representations, Linguistics, Slavic-Eurasian Studies, Ainu and Indigenous Studies [Human Sciences] Psychology, Behavioral Science, Sociology, Regional Science	Master's	×	×	Apr.
		Doctor's	×	×	Apr.
PUBLIC POLICY	[Public Policy] Public Management, International Policy, Technology Policy	Professional Master's	○	×	Apr.
HEALTH SCIENCES	[Health Sciences] Health Sciences, Nursing	Master's	○	×	Apr.
		Doctor's	○	×	Apr.
MEDICINE	[Medicine] Biochemistry, Anatomy, Physiology, Pharmacology, Pathology, Microbiology and Immunology, Social Medicine, Internal Medicine, Radiology, Surgery, Anesthesiology and Critical Care Medicine, Reconstructive Surgery and Rehabilitation Medicine, Reproductive and Developmental Medicine, Sensory Organ Medicine, Neurological Disorder, Medical Biology, Immunology, Pathological Oncology, Clinical Collaborative Departments	Master's	○	○	Apr./Oct.
		Doctor's	○	○	Apr./Oct.
DENTAL MEDICINE	[Oral Medical Science] Oral Functional Science, Oral Health Science, Oral Pathobiological Science, Stomatognathics	Doctor's	○	○	Apr.
VETERINARY MEDICINE	[Veterinary Medicine] Basic Veterinary Sciences, Applied Veterinary Sciences, Environmental Veterinary Sciences, Clinical Sciences	Doctor's	○*	○	Apr./Oct.
BIOMEDICAL SCIENCE AND ENGINEERING	[Quantum Biomedical Science and Engineering] Particle Beams for Biomedical Science and Engineering, Radiation for Biomedical Science and Engineering [Molecular Biomedical Science and Engineering] Biomedical Imaging, Biology for Biomedical Science and Engineering	Master's	○	○	Apr./Oct.
		Doctor's	○	○	Apr./Oct.
INFECTIOUS DISEASES	[Infectious Diseases] Disease Control, Preventive Veterinary Medicine, Zoonosis Control, Microbiology and Infectious Diseases	Doctor's	○*	○	Apr./Oct.

* There is a degree program offered in English.

** Even if it says "x," it is possible to obtain your degree in English depending on your professor.



Graduate School	Study Areas	Degree	Special Admission for Int'l Students	Obtaining Degree in English**	Time of Enrollment
FISHERIES SCIENCES	[Marine Bioresource and Environmental Science] Marine Biology and Biodiversity, Marine Bioresource Science, Marine Environmental Science, Marine Environment and Resource Sensing, Fisheries Engineering, Humans and the Ocean [Marine Life Science] Aquaculture Biology, Aquaculture Genetics and Genomics, Marine Biotechnology and Microbiology, Marine Bioresources Chemistry, Marine Food Science and Technology, Marine Chemical Resource Development	Master's	○	×	Apr./Oct.
		Doctor's	○	×	Apr./Oct.
ENVIRONMENTAL SCIENCE	[Environmental Science Development] Human and Ecological Systems, Environmental Adaptation Science, Practical Science for the Environment, Global Environmental Management [Earth System Science] Biogeochemistry, Atmosphere-Ocean and Climate Dynamics, Cryosphere Science [Biosphere Science] Plant Ecology and Biodiversity Science, Ecological Genetics, Molecular Biology, Animal Ecology, Marine Biogeochemistry and Biology, Aquatic Biology, Forest Field Science, Agro-Ecosystem Science [Environmental Materials Sciences] Biomaterials Chemistry, Environmental Nano-Materials, Molecular Photonics and Electronic Science, Environmental Catalytic Chemistry	Master's	○*	○	Apr./Oct.
		Doctor's	○*	○	Apr./Oct.
SCIENCE	[Mathematics] Mathematics [Condensed-Matter Physics] Quantum Solid State Physics, Condensed-Matter Physics [Cosmosciences] Fundamental Physics, Cosmos and Planets [Natural History Sciences] Earth and Planetary Dynamics, Earth and Planetary System Science, Biodiversity, Science Communication, Seismology and Volcanology	Master's	○*	○	Apr./Oct.
		Doctor's	○*	○	Apr./Oct.
AGRICULTURE	DIVISION OF AGRICULTURE [Frontiers in Production Sciences] Agricultural Plant Science, Botany and Agronomy, Agricultural Economics, Bioproduction Engineering [Frontiers in Biosciences] Animal Science, Applied Molecular Biology, Applied Biological Chemistry [Frontiers in Environmental Sciences] Ecology and Systematics, Regional Environment, Forest Resource Utilization, Integrated Forest-Landscape Management	Master's	○*	○	Apr./Oct.
		Doctor's	○*	○	Apr./Oct.
LIFE SCIENCE	[Life Science] Transdisciplinary Life Science, Biosystems Science, Biomedical and Pharmaceutical Science [Soft Matter] Soft Matter Science [Clinical Pharmacy] Clinical Pharmacy	Master's	○*	○	Apr./Oct.
		Doctor's	○*	○	Apr./Oct.
ENGINEERING	[Applied Physics] Quantum Matter Physics, Complex Material Physics, Optical Science and Technology, Solid State Physics and Engineering, Nano-scale Applied Physics [Materials Science and Engineering] Ecological Materials, Materials Design, Energy Materials, Energy Conversion Materials, Ironmaking and Steelmaking, Frontier Energy Engineering [Mechanical and Space Engineering] Space Systems Engineering, Materials and Fluid Mechanics, Space Exploration Engineering [Human Mechanical Systems and Design] Biomechanics and Robotics, Micromechanical Systems, Biomedical Simulation [Energy and Environmental Systems] Nuclear and Environmental Systems, Applied Energy Systems [Quantum Science and Engineering] Applied Quantum Beam Engineering, Plasma Science and Engineering, Nanomaterials Science, Materials Structure Science, Fusion Science [Field Engineering for the Environment] Hydraulic and Aquatic Environment Engineering, Geotechnical and Material Engineering for Disaster Prevention [Engineering and Policy for Sustainable Environment] Engineering for Sustainable Infrastructure System, Policy for Engineering and Environment [Architectural and Structural Design] Structural and Urban Safety Design, Human Settlement Design [Human Environmental Systems] Planning and Performances for Built Environment, Building Engineering and Planning [Environmental Engineering] Water Metabolic System, Environmental Management Systems [Sustainable Resources Engineering] Resources Engineering, Geoenvironmental Engineering, Environmental Risk Assessment [Cooperative Program for Resources Engineering] Global Resources and Environmental Engineering, Resources Engineering for international strategy	Master's	○*	○	Apr./Oct.
		Doctor's	○*	○	Apr./Oct.
CHEMICAL SCIENCES AND ENGINEERING	[Chemical Sciences and Engineering] Microscopic Chemical Analyses, Fine Chemical Reactions, Catalytic Reactions, Chemical Process Engineering, Molecular Materials Chemistry, Inorganic Materials Chemistry, Frontier Materials Chemistry, Functional Materials Chemistry, Biomolecular Chemistry, Biofunctional Chemistry, Cell Engineering, Molecular Medical Biochemistry	Master's	○	×	Apr./Oct.
		Doctor's	○*	○	Apr./Oct.
GLOBAL FOOD RESOURCES	[Global Food Resources] Production, Environment, Governance	Master's	○	○	Apr.
		Doctor's	○	○	Apr./Oct.
INFORMATION SCIENCE AND TECHNOLOGY	[Information Science and Technology] Computer Science and Information Technology, Electronics for Informatics, Bioengineering and Bioinformatics, Media and Network Technologies, Systems Science and Informatics	Master's	○	×	Apr./Oct.
		Doctor's	○	×	Apr./Oct.

* There is a degree program offered in English.

** Even if it says "x," it is possible to obtain your degree in English depending on your professor.



RESEARCH INSTITUTES AND CENTERS

Institute of Low Temperature Science	https://www2.lowtem.hokudai.ac.jp/en/index.html	kyodo@lowtem.hokudai.ac.jp
Water and Material Cycles, Frontier Ice and Snow Science, Environmental Biology, Pan-Okhotsk Research Center		
Research Institute for Electronic Science	https://www.es.hokudai.ac.jp/english/	k-kenkyo@jimuhokudai.ac.jp
Photonics and Optical Science, Material and Molecular Sciences, Biology and Life Sciences, Research Center of Mathematics for Social Creativity, Green Nanotechnology Research Center		
Institute for Genetic Medicine	https://www.igm.hokudai.ac.jp/en/	d-tanto@med.hokudai.ac.jp
Molecular Pathogenesis, Pathophysiology, Disease Control		
Institute for Catalysis	https://www.cat.hokudai.ac.jp/index-e.html	k-kenkyo@jimuhokudai.ac.jp
Catalysis Theory, Catalyst Structure, Catalytic Reaction, Catalytic Transformation, Catalyst Material, Molecular Catalyst, Macromolecular Science, Research and Development Division		
International Institute for Zoonosis Control	https://www.czc.hokudai.ac.jp/en/	kyomu@vetmed.hokudai.ac.jp
Zoonosis Control		
Slavic-Eurasian Research Center	https://src-h.slav.hokudai.ac.jp/index-e.html	jimuhokudai.ac.jp
Russia, Siberia and Far East, Central Eurasia, Eastern Europe, Comparative Studies, Border Research, Survival Strategies, Ukraine and Neighboring Areas		
Information Initiative Center	https://www.iic.hokudai.ac.jp/en/	kyodo@oicte.hokudai.ac.jp
Supercomputing, Information Network, Digital Contents, Media Education, System Design, Cyber Security, Knowledge Generation Infrastructure		
The Hokkaido University Museum	https://www.museum.hokudai.ac.jp/english/	museum-jimuhokudai.ac.jp
Research of Academic Samples		
Research Center for Integrated Quantum Electronics	https://www.rciqe.hokudai.ac.jp/en/	kyomu-t@ist.hokudai.ac.jp
Advanced Electronic Nanomaterials, Quantum Intelligent Devices, Functional Communication Devices and Circuits		
Field Science Center for Northern Biosphere	https://www.fsc.hokudai.ac.jp/home_en/	kyoryoku@fsc.hokudai.ac.jp
Bioresource Development, Agro-ecosystem Research, Aquatic Research, Integrated Research		
Center for Advanced Tourism Studies	https://www.cats.hokudai.ac.jp/en/	nyuushi@imc.hokudai.ac.jp
Tourism Innovation Studies, Tourism Destination Management, Contents Tourism/Media Tourism Studies, Cultural Resource Management International Cooperation for Tourism Development, Collaboration of Local Tourism Organizations		
Center for Experimental Research in Social Sciences	https://lynx.let.hokudai.ac.jp/cerss/en/	cerss@lynx.let.hokudai.ac.jp
Experimental Research in Social Sciences, the Sociality of Minds		
Center for Environmental and Health Sciences	https://www.cehs.hokudai.ac.jp/en/	info@cehs.hokudai.ac.jp
Environmental Health, Environmental Epidemiology, Health Risk Analysis, Cohort Study		
Arctic Research Center	https://www.arc.hokudai.ac.jp/en/	k-kenkyo@jimuhokudai.ac.jp
Arctic Research, Cooperative and Fusion Research, Cross-regional Research		
Research and Education Center for Brain Science	https://www.hokudai.ac.jp/recbs/english/	brain@med.hokudai.ac.jp
Brain Science, Cognition, Behavior, Social Communication, Advanced Measurement		
Institute for Academic Innovation (newly established in April 2026)		soumu@academic.hokudai.ac.jp
Educational Research Division, First Year Education Division, Center for Educational Development, International Education Center, Collaborative Learning and Educational Enhancement Center, Center for Career Design, Student Counseling and Support Center, Data-Driven Education Initiative Center		

GRADUATE SCHOOL WEBSITE AND

Graduate School	Contact e-mail Address	Website
LAW	gakuji@juris.hokudai.ac.jp	https://www.juris.hokudai.ac.jp/
EDUCATION	ryugaku@edu.hokudai.ac.jp	https://www.edu.hokudai.ac.jp/en/
ECONOMICS AND BUSINESS	ecokyomu@jimu.hokudai.ac.jp	https://www.econ.hokudai.ac.jp/en/
INTERNATIONAL MEDIA, COMMUNICATION, AND TOURISM STUDIES	nyuushi@imc.hokudai.ac.jp	https://www.imc.hokudai.ac.jp/english/
HUMANITIES AND HUMAN SCIENCES	ryugaku-sup@let.hokudai.ac.jp	https://www.let.hokudai.ac.jp/en
PUBLIC POLICY	hops@juris.hokudai.ac.jp	https://www.hops.hokudai.ac.jp/en/
HEALTH SCIENCES	intloffice@hs.hokudai.ac.jp	https://www.hs.hokudai.ac.jp/e/
MEDICINE	d-tanto@med.hokudai.ac.jp	https://www.med.hokudai.ac.jp/en/graduate/
DENTAL MEDICINE	kyomu@den.hokudai.ac.jp	https://www.den.hokudai.ac.jp/en/
VETERINARY MEDICINE	kyomu@vetmed.hokudai.ac.jp	https://www.vetmed.hokudai.ac.jp/en/
BIOMEDICAL SCIENCE AND ENGINEERING	d-tanto@med.hokudai.ac.jp	https://www.med.hokudai.ac.jp/en/bme/
INFECTIOUS DISEASES	kyomu@vetmed.hokudai.ac.jp	https://www.infectdis.hokudai.ac.jp/en/
FISHERIES SCIENCES	kyoumu@fish.hokudai.ac.jp	https://www2.fish.hokudai.ac.jp/language-english/
ENVIRONMENTAL SCIENCE	kyomu@ees.hokudai.ac.jp	https://www.ees.hokudai.ac.jp/?lang=en
SCIENCE	r-gakuin@sci.hokudai.ac.jp	https://www2.sci.hokudai.ac.jp/gs/en
AGRICULTURE	kyomu@agr.hokudai.ac.jp	https://www.agr.hokudai.ac.jp/en
LIFE SCIENCE	r-gakuin@sci.hokudai.ac.jp	https://www.lfsci.hokudai.ac.jp/en/
ENGINEERING	kyomuka@eng.hokudai.ac.jp	https://www.eng.hokudai.ac.jp/english/
CHEMICAL SCIENCES AND ENGINEERING	c-sougou@cse.hokudai.ac.jp	https://www.cse.hokudai.ac.jp/en/
GLOBAL FOOD RESOURCES	kyomu@agr.hokudai.ac.jp	https://www.gfr.hokudai.ac.jp/
INFORMATION SCIENCE AND TECHNOLOGY	kyomu-t@ist.hokudai.ac.jp	https://www.ist.hokudai.ac.jp/eng/

CONTACT INFORMATION

Admissions information (website guide)	Faculty Members List (website guide)
TOP>Prospective Students>Graduate Student Admission	TOP>Faculty Members
TOP>Admissions>Graduate Admissions	TOP>About us>Staff
TOP>Admission	TOP>Faculty
TOP>Admissions	TOP>Academic>Faculty Profiles
TOP>Admission>Graduate School>Admission>Graduate Student Admission	TOP>Faculty List
TOP>Admission	TOP>HOPS>Faculty Members
TOP>Admissions>Graduate Admissions	TOP>About Us>Faculty Members
TOP>Prospective Students>Information for Applicants	TOP>General Information>Department
TOP>Graduate school applicants	TOP>Departments and Divisions of Graduate School of Dental Medicine
TOP>Graduate School of Veterinary Medicine>Application Guideline	TOP>Graduate School of Veterinary Medicine>Department/Laboratory
TOP>Prospective Students>Entrance Examinations	TOP>Educational Content>Courses/List of Faculty
TOP>Graduate School of Infectious Diseases>Application Guideline	TOP>Graduate School of Infectious Diseases>Department/Division/Unit
TOP>Admissions>Application Guidelines	TOP>Academics>Faculty>List of faculty members
TOP>General Application	TOP>Staff
TOP>Admissions	Department of Mathematics: TOP> People Department of Condensed Matter Physics: TOP> staff Department of CosmoSciences: TOP> Member Department of Natural History Sciences: TOP> Departments> visit each division's website
TOP>Graduate School of Agriculture>Graduate Admissions	TOP>Research Faculty of Agriculture>Faculties
TOP>Admission Information	TOP>Faculty
TOP>Admission to Graduate School	TOP>Research>Staff
TOP>Admission	TOP>Member
TOP>Prospective Students>Admission Information	TOP>Prospective Students>Faculty Staff
TOP>Prospective Students	TOP>Teaching Staff

TUITION FEES

	Undergraduate Students	Postgraduate Students	Research Students	Auditing Students
Tuition Fee	¥535,800 / year	¥535,800 / year	¥29,700 / month	¥14,800 / credit
Entrance Fee	¥282,000	¥282,000	¥84,600	¥28,200
Examination Fee	¥17,000	¥30,000	¥9,800	¥9,800

- ① At Hokkaido University, tuition is paid in two installments : May and November.
- ② Should tuition fees be revised during a student's period of enrollment, the new amount will become effective from that point on.
- ③ Students who fail to pay tuition fees for one term will not be allowed to continue.
- ④ Students enrolled in regular (degree-seeking) undergraduate and graduate courses who experience financial difficulty while maintaining excellent academic records may apply to receive a 100%, 50% or 25% tuition fee reduction.
- ⑤ Tuition Fees must be paid in yen.

TUITION FEE WAIVER PROGRAM

Q

How easy is it to obtain a tuition fee waiver if I'm having financial difficulties?

A

Each year, about 90% of applicants are successful in obtaining a tuition fee waiver of either 100%, 50% or 25%.



COST OF LIVING

How much money will I need?

Housing ¥35,000~45,000	Food ¥20,000~35,000
Books ¥10,000~15,000	Misc ¥15,000~20,000

Budget
¥80,000~115,000
per month

*The above are estimated costs and should be used as a guide only.

Sapporo provides an excellent quality of life and a cost of living more reasonable compared with other major cities in Japan. Your budget will depend on the lifestyle you choose to lead (eating in restaurants or cooking at home, living in private accommodation or in University dormitories). Generally with tuition costs included, you should budget for ¥1,500,000 per year.

SCHOLARSHIP INFORMATION



Japanese Government

Japanese Government (Monbukagakusho) Scholarship

There are three methods to secure a “Monbukagakusho Scholarship”:

- ① One method to apply for a scholarship is to receive a recommendation to MEXT from the Japanese Embassy or Consular Office in your country. To receive a recommendation, you need to pass a primary screening conducted by the local embassy with cooperation from your country's government. For more details, enquire at your local Japanese Embassy or Consular Office.
- ② Students coming to Hokkaido University can also apply through our University. Application is made through your prospective advisor. At the undergraduate level, only the Modern Japanese Studies Program and the Integrated Science Program are adopted as "Special Program" for MEXT scholarship (University Recommendation/Special Selection). For details, please refer to each program's website (see p4).
- ③ Domestic Selection* : This category targets self-supported students currently studying in Japan.

*Japanese Government will not offer scholarships in this category from 2015 to 2025.

Hokkaido University

Special Grant Program for Self-Supported International Students

This program is for prospective international students seeking doctoral degrees or the international students selected for the “Program for Leading Graduate Schools” and equivalent programs. To obtain this special grant, applicants must have excellent academic records and be able to prove how their research can contribute internationally in their chosen field. International students selected for this program are hired as Research Assistants or receive a stipend and their tuition fees are waived.

Hokkaido University Frontier Fund Clark Scholarship

This scholarship is financed by donation, and for self-supported international students seeking doctoral degrees who have excellent academic records and need financial assistance.

For more detailed information, please refer to our website: <https://www.oia.hokudai.ac.jp/cier/own-scholarship/>

Private

Although highly competitive, there are a variety of scholarships that students can apply for after arriving in Japan.

Please refer to our website: <https://www.oia.hokudai.ac.jp/cier/current/>

Others

JASSO (Japan Student Service Organization)

This scholarship is open to undergraduate students taking the Examination for Japanese University Admission for International Students (EJU) or students who intend to enroll in a school/graduate school that offers pre-arrival admission. The monthly stipend is ¥48,000.

For details of pre-arrival scholarship, please visit: https://www.jasso.go.jp/en/ryugaku/scholarship_j/shoreihi/yoyaku_tonichimae.html

JICA (Japan International Cooperation Agency)

This scholarship is provided to JICA participants accepted by the University in order to support the development of human resources who will contribute to the development of their countries.

For more information, please refer to the JICA website: <https://www.jica.go.jp/>



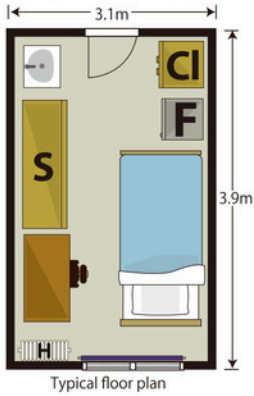
ACCOMMODATION

Hokkaido University's Institute for the Advancement of Higher Education can help arrange initial accommodation for you.

1 Hokkaido University International House Kita 23 Building 1

86 Room Men's Dormitory

Rent: ¥22,000 per month
Utility charges:
¥9,012~¥17,412 per month



Cl = Closet F = Fridge
S = Shelf H = Heater

2 Hokkaido University International House Kita 23 Building 2

96 Room Women's Dormitory

Rent: ¥28,000 per month
Utility charges: ¥6,912~¥14,412 per month



3 Sosei-Ryo

21 Room Women's Dormitory

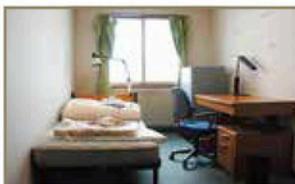
Rent: ¥4,700 per month
Utility charges: ¥5,000~¥7,000 per month



4 Keiteki-Ryo

40 Room Men's Dormitory

Rent: ¥4,700 per month
Utility charges: ¥5,000~¥7,000 per month



5 Hokkaido University International House Kita 8

189 rooms for singles

■ Building1, 2 32rooms
(shared house (2 private rooms))
Rent: ¥27,300~¥27,600 per month
Utility charges: ¥9,900 per month

■ Building3, 4 70rooms
(shared house (2 private rooms))
Utility charges: ¥13,200 per month

■ Building5 87rooms
(Women's Dormitory)
Rent: ¥29,000 per month
Utility charges: common area:
¥9,012~¥19,512 per month



building2-4

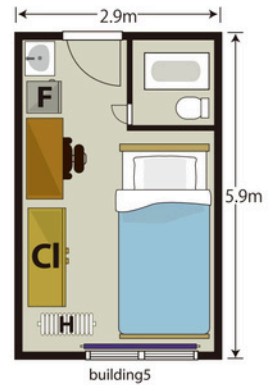
4rooms for couples (building1, 2)

Rent: ¥37,000 per month
Utility charges: ¥19,800 per month

4rooms for families (building3, 4)

Rent: ¥49,000 per month
Utility charges: ¥26,400 per month

Cl = Closet F = Fridge
S = Shelf H = Heater



6 Sapporo International Student Center

Around 25 for singles

Rent: ¥30,800 per month
Utility charges: Individual contract

A few rooms for couples and families

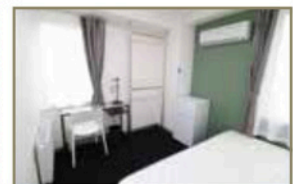
Rent: ¥39,600 per month
Utility charges: Individual contract



7 Hokkaido University International House Kita 14

22 room Men's Dormitory

Rent: ¥32,000~¥39,000 per month
Utility charges: Summer (May-Sep) ¥8,000 per month,
Winter (Oct-Apr) ¥15,000 per month
Common service expense: ¥6,000 per month



Want to rent privately?

The monthly rent for one room runs in the range of ¥35,000 - 45,000. Approximately 75% of International Students reside in private rental housing. Most private rental housing is unfurnished, so you will need to provide your own furniture and bedding. Also, you will need to have a guarantor co-sign the lease and pay the equivalent of 4 or 5 months rent to cover such things as an initial cost, agent's commission, and initial rent. If you need a guarantor, apply for a guaranty company.

*For more information on accommodation for international students, please refer to our website (Japanese: <https://www.oia.hokudai.ac.jp/cier/housing/> / English: <https://www.global.hokudai.ac.jp/university-life/housing/>) Or enquire at the Student Support Division, Academic Affairs Department (skshien@oia.hokudai.ac.jp) and Hokkaido University Coop (your-room@coop.hokudai.ac.jp).



Please note rent fees are subject to change.

In addition to rent and utilities charges, there is a cleaning charge and bed linen rental charge.

INTERNATIONAL STUDENT SUPPORT

Once you get to Hokkaido you're not alone. We run a wide range of services to help you get the most out of your time here, to prepare for life beyond university, and to help you if times get tough.

These are just a few of the ways we will support your health and welfare, academic life, and career planning during your time with us.

Supporter System

The International Student Supporter System is designed to provide assistance to first-comers to Japan to ensure that international students commence their lives in Hokkaido smoothly.

International Student Support Desk

At the International Student Support Desk, experienced students provide consultation and can answer any questions you may have. Need help reading Japanese documents? Don't understand procedures you need to carry out at your local government office? Want advice on where to shop? Don't hesitate to drop into the International Student Support Desk directly and ask away. Support provided in Japanese, English, Chinese, and other languages depending on staff rotation. Office hours: The operating schedule for 2026 has not yet been determined. Please check website for updates.



Counseling Service

Being far away from your family and friends, you may experience homesickness and loneliness. Starting your study in a new environment may cause anxiety, and adjusting to a different culture and climate can also be tough. Many people feel anxious and stressed when going through changes and life transitions. If you are experiencing any difficulties in your study, career decision-making, interpersonal relationships, cultural adjustment, or mental health issues, do not hesitate to ask for help. At the International student counseling office, counselors can help you resolve your difficulties and provide you with professional advice or counseling. Language : Japanese and English



Job Hunting Support

Center for Career Design provides various kinds of job hunting support including resume correction, mock interviews, and seminars. If you are planning on gaining employment in Japan, you should start your job search process as early as possible, because most Japanese companies start the recruitment activities about one and a half years before the graduation of the students. We encourage you to receive useful services from Center for Career Design. For more information on job hunting support, please refer to our website. (Japanese: <https://cc.academic.hokudai.ac.jp/>)



STUDENT LIFE

At Hokkaido University, there is more to student life than just lectures and tutorials. An abundance of opportunities awaits international students to become part of the many activities available on campus. There are approximately 50 cultural clubs and approximately 70 athletic clubs at Hokkaido University. If you wish to know Japan and get better acquainted with Japanese students, participation in club activities will prove to be extremely rewarding. The Student Support Division offers many kinds of cross-cultural events and cultural exchange opportunities which are open to international students, international researchers, their families, Japanese students, and University staff. Come by the Student Communication Station to find upcoming events on the message board or in the HU International Student Newsletter.

- Art ● Jazz ● Judo ● Rugby ● Ice Skating ● Dance ● Chorus ● Boating ● Track & Field ● Archery ● Curling ● Boxing ● Rakugo ● Cycling ● Yachting
- Handball ● Canoeing ● Volleyball ● Basketball ● Swimming ● Gymnastics ● Field Hockey ● Orienteering ● Cheerleading ● Cinema ● Photography
- Horseback Riding ● Mountaineering ● Skiing and many more.



CLIMATE IN SAPPORO CITY

*average daily temperatures

April
(9°C/49°F)

May
(14°C/58°F)

June
(19°C/67°F)

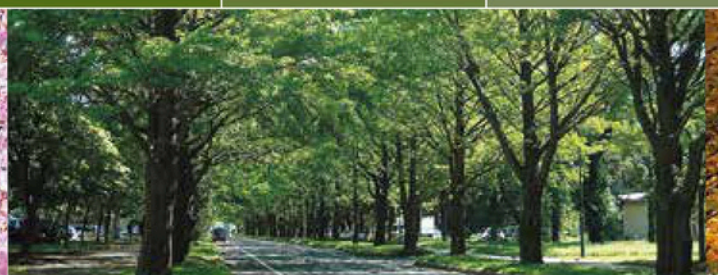
July
(24°C/75°F)

August
(27°C/80°F)

September
(22°C/71°F)



SPRING Pleasant temperatures with an abundance of colors



SUMMER Warm days full of sunshine with temperate mornings and evenings

ABOUT HOKKAIDO

Hokkaido is the northernmost region of Japan, consisting of one large island and more than 500 surrounding islands. Dotting the center of the main island are mountain ranges and impressive volcanoes surrounded by sweeping coastal plains. The islands' total land mass is 83,000km² which makes up 22% of the total land mass of Japan. Sapporo is known for its amazing food, unique history, natural beauty, and cosmopolitan character. With its fashionable restaurants, cafe culture, and relaxed atmosphere, it's often rated as one of the most desirable places to live in Japan. Sapporo offers a high quality lifestyle with its perfect blend of bustling city life and the natural peace of the great outdoors.



October

(13°C/56°F)

November

(7°C/44°F)

December

(-1°C/30°F)

January

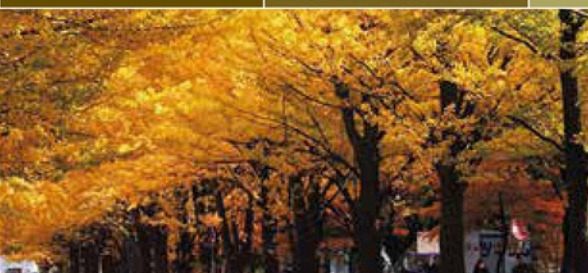
(-4°C/24°F)

February

(-3°C/27°F)

March

(5°C/41°F)



AUTUMN All the beautiful colors of Autumn

WINTER Refreshing and invigorating days with sun and powdery snow



CONTACT



HOKKAIDO UNIVERSITY Office of Admissions

Kita 17, Nishi 8, Kita-ku, Sapporo, 060-0817

Hokkaido University International Student Prospectus 

HOKKAIDO
UNIVERSITY

<https://www.global.hokudai.ac.jp/contact-us/>

 [HokkaidoUni](#)  [@HokkaidoUni](#)  [hokkaidouni](#)  [@HokkaidoUni](#)

